

**BERGEN COMMUNITY COLLEGE**



**FACT BOOK**  
**2008 - 2009**

**CENTER FOR INSTITUTIONAL EFFECTIVENESS**

# **FACT BOOK**

**2008 - 2009**

Bergen Community College  
Center for Institutional Effectiveness  
400 Paramus Road  
Paramus, New Jersey 07652

## FOREWORD

The 2008-2009 Edition of the Bergen Community College Fact Book presents data relating to enrollment, graduates, faculty and other personnel, college finances, and demographics. The Fact Book has several purposes: to provide data which may assist the administration in planning and decision making; to give the college community an overview of the student, personnel and financial profiles of the college; and to serve as a reference document which answers many of the most often-asked questions about the college.

Selected tables and graphs may be found on the Center for Institutional Effectiveness website, which can be accessed from the '**Centers**' link, available from the '**About Bergen**' page of the College's website: [www.bergen.edu](http://www.bergen.edu). For further details, or for data not presented here, please contact the Center for Institutional Effectiveness at the number below. Comments and suggestions for future editions of the Fact Book are welcome.

Center for Institutional Effectiveness  
(201) 612-5564  
<http://www.bergen.edu/pages/3535.asp>

Center for Institutional Effectiveness

Assistant Director  
Tonia McKoy

Research Assistant  
Jack Latona  
*Fact Book Editor*

# TABLE OF CONTENTS

<b>A. GENERAL INFORMATION</b>	
Highlights .....	1
Mission and Vision Statements.....	2
Board of Trustees, 2007-2008 .....	3
Administrative Organization Chart .....	4
Administration .....	5
Programs by Degree.....	6
Accreditation .....	7
<b>B. STUDENT CHARACTERISTICS</b>	
Highlights .....	8
Enrollment by Race/Ethnicity, Fall 2004 - Fall 2008.....	9
Enrollment by Age, Gender and Status, Fall 2008 .....	10
Enrollment by County of Residence, Fall 2008.....	11
Bergen County Student Residency Map, Fall 2008.....	12
Enrollment by Country of Citizenship, Fall 2006 - Fall 2008.....	13
Enrollment by Status, Fall 1968 - Fall 2008.....	14
Graph, Enrollment by Status, Fall 2004 - Fall 2008.....	15
Distance Learning Enrollment, Fall 2004 - Fall 2008.....	16
Enrollment by Day/Evening, Fall 2004 - Fall 2008 .....	17
<b>C. PROGRAM DATA</b>	
Highlights .....	18
Student Population by Degree Program, Fall 1974- Fall 2008.....	19
Graph, Student Population by Degree Program, Fall 2004 - Fall 2008.....	20
Student Population by Degree Program and Registration Status, Fall 2008 .....	21
Associate in Arts, Number of Declared Majors, Fall 2004- Fall 2008.....	22
Associate in Science, Number of Declared Majors, Fall 2004-Fall 2008 .....	23
Associate in Applied Science, Number of Declared Majors, Fall 2004 - Fall 2008 .....	24
Certificate Programs, Number of Declared Majors, Fall 2004 - Fall 2008.....	25
Transfer Programs, Five Year Change.....	26
Career Programs, Five Year Change .....	27
<b>D. NUMBER OF CREDITS</b>	
Highlights .....	28
Number of Credits by Student Status, Fall 2008 .....	29
Number of Credits by Degree Program, Fall 2008 .....	30
Number of Credits by Degree Program, Fall 2008 .....	31
<b>E. NON-CREDIT ENROLLMENT</b>	
Highlights .....	32
Continuing Education Enrollment, Fiscal Year 2008 .....	33
Ciarco Learning Center Enrollment, Fiscal Year 2008 .....	34
Institute for Learning in Retirement Enrollment, Fiscal Year 2008 .....	35
<b>F. DEGREES AWARDED</b>	
Highlights .....	36
Degrees and Certificates Awarded, 1998 - 2008.....	37
Associate in Arts, Degrees Awarded, 2004 - 2008.....	38
Associate in Science, Degrees Awarded, 2004 - 2008 .....	39
Associate in Applied Science, Degrees Awarded, 2004 - 2008 .....	40
Certificates Awarded 2004 - 2008 .....	41

## G. FACULTY CHARACTERISTICS

Highlights .....	42
Full-Time Faculty by Division, Rank and Gender, Fall 2008 .....	43
Full-Time Faculty by Race/Ethnicity and Gender, Fall 2008 .....	44
Full-Time Faculty by Tenure and Division, Fall 2008 .....	45
Graph, Full-time Faculty by Tenure and Division, Fall 2008.....	46
Full-Time Faculty Highest Degree by Division and Gender, Fall 2008.....	47
Adjunct Faculty Gender and Race/Ethnicity, Fall 2008 .....	48

## H. FINANCIAL DATA

Highlights .....	49
Current Funds Budget, Revenues, Fiscal Years 2007 and 2008 .....	50
Graph, Current Funds Budget, Revenues, Fiscal Year 2008 .....	51
Current Funds Budget, Expenditures, Fiscal Years 2007 and 2008 .....	52
Graph, Current Funds Budget, Expenditures, Fiscal Year 2008 .....	53
Student Financial Aid, Recipients and Amount of Award, Fiscal Year 2008 .....	54

## HIGHLIGHTS

### BERGEN COMMUNITY COLLEGE HISTORY

- ❖ Bergen Community College was established by the County Board of Chosen Freeholders in 1965. Dr. Sidney Silverman was named the first President in 1967 and the first classes were offered in September of 1968 on a 167 acre campus in Paramus. Construction of the 430,000 square foot Megastructure was completed in 1973.
- ❖ Modifications to the Megastructure have included the Student Center, additions to the Sidney Silverman Library, the Theater and additions to the C-Wing of a resource room, classrooms and computer labs. Most recently, construction on an expansion and renovation of the science wing began in May 2008.
- ❖ Other recent campus improvements include two new academic facilities that have opened within the last six years. The Technology Education Center, which opened in 2002, houses a simulated manufacturing laboratory, computer labs, an interactive television and video conference classroom, a state-of-the-art Meeting and Training Center, an electronic library, and a two-domed observatory. West Hall, which officially opened in May 2007, currently houses Bergen's Educational Broadcast Center and Media Technologies Department (including modern television studios, a radio studio, and a video conference center), as well as classrooms, computer graphics and animation laboratories, exhibition rooms, art studios, rehearsal rooms, music recording facilities and a recital hall.
- ❖ Bergen Community College at the Meadowlands, an instructional site opened in July 2008, began offering credit courses in Summer 2008. The campus is currently housed in Lyndhurst, NJ.

**BERGEN COMMUNITY COLLEGE**  
**Mission and Vision Statements**

**Vision**

As a college of choice, Bergen Community College provides a comfort level that enables students of all abilities to mature as learners and engaged citizens. A leading community college in the nation, the college creates a stimulating, rigorous, and inclusive learning environment. Use of innovative technology enhances learning experiences and widens access to learning media. Community and business leaders value the college as a reliable partner and principal provider of work force development. Bergen county residents of all ages and cultural backgrounds appreciate the college as a hub of their educational and cultural activities.

**Mission**

Bergen Community College educates a diverse student population in a supportive and challenging academic environment that fosters civility and respect. The College offers a comprehensive set of accessible, affordable, and high-quality credit and non-credit courses as well as degree and non-degree programs. Bergen provides life-long learning opportunities for all members of the community. The College responds to community needs through work force training and continuing education, and by developing programs for employers.

**BERGEN COMMUNITY COLLEGE**  
**Board of Trustees**  
**2008-2009**

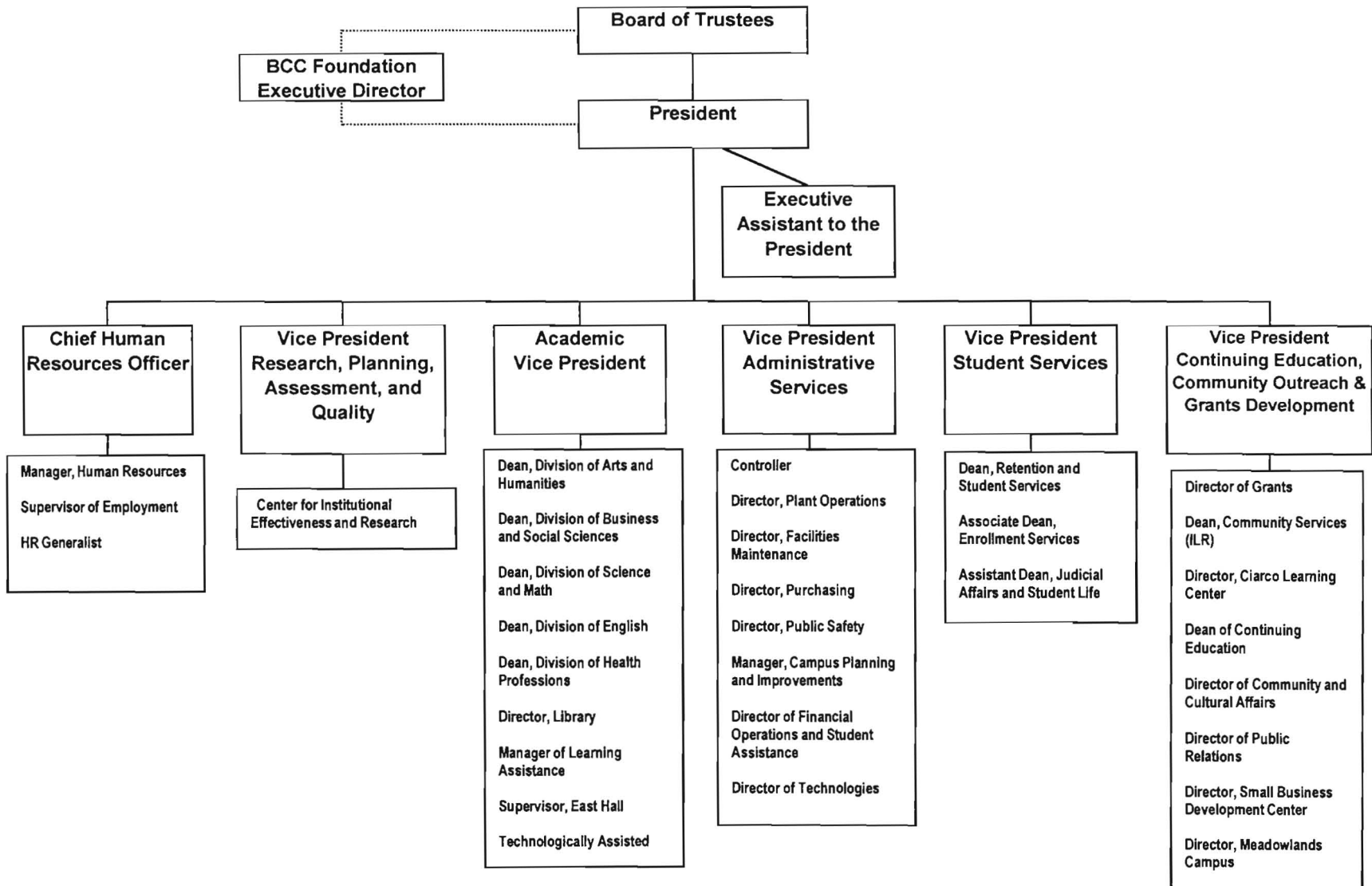
Stephen J. Moses, *Chairman*  
David J. Kasparian, *Vice Chairman*  
Dorothy L. Blakeslee, *Treasurer*  
Cid D. Wilson, *Secretary*

Philip J. Ciarco III  
E. Carter Corriston  
Richard Dressel  
Dr. Aaron R. Graham  
Michael J. Neglia  
Germaine M. Ortiz  
Carol D. Otis

Ignacio Acosta  
*Alumni Representative*



**BERGEN COMMUNITY COLLEGE**  
**Administrative Organization Chart**  
**FY2008-2009**



**BERGEN COMMUNITY COLLEGE  
Administration**

<b>President</b>	Dr. G. Jeremiah Ryan	447-7237
<b>Executive Assistant to the President</b>	Raymond Welch	612-5331
<b>Chief Human Resources Officer</b>	James R. Miller	447-7442
<b>Vice President</b> Administrative Services	Timothy J. Dacey	447-7104
<b>Vice President</b> Academic Affairs	Dr. Gary F. Porter	612-5351
<b>Vice President</b> Continuing Education, Community Outreach and Grants Development	Susan A. Johnson	447-5363
<b>Vice President</b> Research, Planning, Quality and Assessment	Dr. Peter Dlugos	493-3619
<b>Vice President</b> Student Services	Raymond Smith	447-7869

## BERGEN COMMUNITY COLLEGE Programs by Degree

### TRANSFER PROGRAMS

#### ***Associate in Arts Degree***

##### ***Liberal Arts***

##### ***Options:***

General Curriculum  
Cinema Studies  
Communication Arts  
Economics  
History  
Literature  
Philosophy  
Political Science  
Psychology  
Religion  
Social Sciences  
Sociology  
Women's Studies  
World Languages and Cultures

#### ***Associate in Arts Degree***

##### ***Fine and Performing Arts***

##### ***Options:***

Art  
Music Arts  
    General  
    Computer-Based Recording  
    Electronic Music  
    Music Business  
    Music Performance  
Theatre Arts  
    General  
    Acting  
    Dance  
    Technical Production

#### ***Associate in Science Degree***

##### ***Natural Sciences or***

##### ***Mathematics***

##### ***Options:***

General Curriculum  
Biology  
Biotechnology  
Chemistry  
Computer Science  
Mathematics  
Physics

#### ***Associate in Science Degree***

##### ***Professional Studies***

##### ***Options:***

General Curriculum  
Broadcasting  
Business Administration  
Business Administration-  
    Accounting  
Business Administration-  
International Trade  
Business Administration-  
    Management  
Business Administration-

Marketing  
Criminal Justice  
Education  
Exercise Science  
Information Technology  
Journalism  
Social Work

### CAREER PROGRAMS

#### ***Associate in Applied Science Degree***

##### ***Allied Health:***

Dental Hygiene  
Diagnostic Medical Sonography  
Health Science  
Medical Informatics  
Medical Office Assistant  
Radiography  
Respiratory Therapy  
Veterinary Technology

##### ***Art:***

Computer Animation  
Graphic Design/Computer  
    Graphics  
Music Industry, Music Business  
Music Industry, Recording Arts

##### ***Business Administration:***

Accounting  
Banking, Credit & Finance  
Paralegal Studies

##### ***Business Technologies:***

Hotel/Restaurant/Hospitality  
    Catering/Banquet Management  
    Hospitality Management  
Information Technology  
Networking Administration  
Office Technology  
Web Development and  
    Management

##### ***Human Services:***

Career Ladder Education/Child  
    Development  
Correctional Studies  
Early Childhood Education  
Law Enforcement

##### ***Industrial and Design***

##### ***Technologies:***

Drafting & Design Technology  
Electronics Technology  
General Engineering Technology  
Manufacturing Technology

##### ***Nursing:***

Day and Evening Sequences  
LDN/AND Career Mobility Track

##### ***Science Technology:***

Environmental Technology  
Horticulture  
Science Laboratory Technology

### ONE YEAR CERTIFICATE PROGRAMS

Computer Aided Drafting (CAD)  
Computer Animation  
Computer Graphics  
Computer Science  
Computer Technical Support  
Culinary Arts  
Database Programming and  
Administration  
E-Commerce: Business  
    Emphasis  
Environmental Technology  
Exercise Science  
Floral Design  
Grounds Management  
Hospitality Management  
Landscaping  
Legal Nurse Consultant  
Medical Office Administrative  
    Assistant  
Music Business  
Music Technology  
Office Technology  
Radiation Therapy Technology  
Small Business Management  
Surgical Technology  
Transfer Studies: Liberal Arts  
Transfer Studies: Science,  
Technology, and Professional  
Studies  
U.S. Studies  
Vascular Technology

### CERTIFICATE OF ACHIEVEMENT PROGRAMS

Biotechnology  
Business Paraprofessional  
    Management  
Career Ladder Education/Child  
    Development  
Commercial Music Production  
Environmental Technology  
Geographic Information  
    Systems (GIS)  
Machine Tooling  
Manufacturing Design  
Professional Cooking  
Quality Assurance  
Real Estate  
Retailing  
Special Imaging for Radiologic  
    Technologists

**BERGEN COMMUNITY COLLEGE**  
**Accreditation**

**COLLEGE**

Commission on Higher Education of the Middle States Association of Colleges  
and Schools

**PROGRAMS**

Nursing

National League for Nursing Accrediting Commission, Inc

Dental Hygiene

Commission on Dental Accreditation of the American Dental Association

Diagnostic Medical Sonography

Commission on Accreditation of Allied Health Education Programs

Radiography

Joint Review Committee on Education in Radiologic Technology

Respiratory Therapy

Commission on Accreditation of Allied Health Education Programs

Medical Office Assistant

Commission on Accreditation of Allied Health Education Programs

Surgical Technology

Commission on Accreditation of Allied Health Education Programs

Radiation Therapy

Joint Review Committee on Education in Radiologic Technology

Veterinary Technology

American Veterinary Medical Association

In addition, the Legal Assistant Program and Legal Nurse Consultant Program have been granted approval by the American Bar Association. The Nursing Program has been approved by the New Jersey State Board of Nursing.

## HIGHLIGHTS

- ❏ Student enrollment at Bergen Community College increased from 15,057 in Fall 2007 to 15,283 in Fall 2008, a new high for the College. This change represents an overall increase of 1.5% in enrollment between the two semesters.
  
- ❏ As in the previous four years, during the Fall 2008 semester the number of full-time students continued to trend higher than the number of part-time students.
  
- ❏ The racial/ethnic characteristics of the student body remained relatively consistent from Fall 2007 to Fall 2008. The percentage of Hispanic students continued a consistent upwards trend from 24% of the student body in Fall 2004, to 30% of the student body in Fall 2008.
  
- ❏ In Fall 2008, a total of 7,033 (47%) students were male and 8,024 (53%) were female. This ratio has remained relatively constant over the last several years.
  
- ❏ The overall age of BCC students seemed to trend younger from Fall 2007 to Fall 2008. Seventy-one percent (71%) of the student population was under the age of 25, and the mean student age fell from 25.1 in Fall 2007 to 24.5 in Fall 2008. In addition, 67% of the students below the age of 25 were registered as full-time.
  
- ❏ Enrollment in distance learning courses (online and hybrid) has doubled over the past five years, from 10% of the total course enrollment in Fall 2004 to over 20% in Fall 2008.

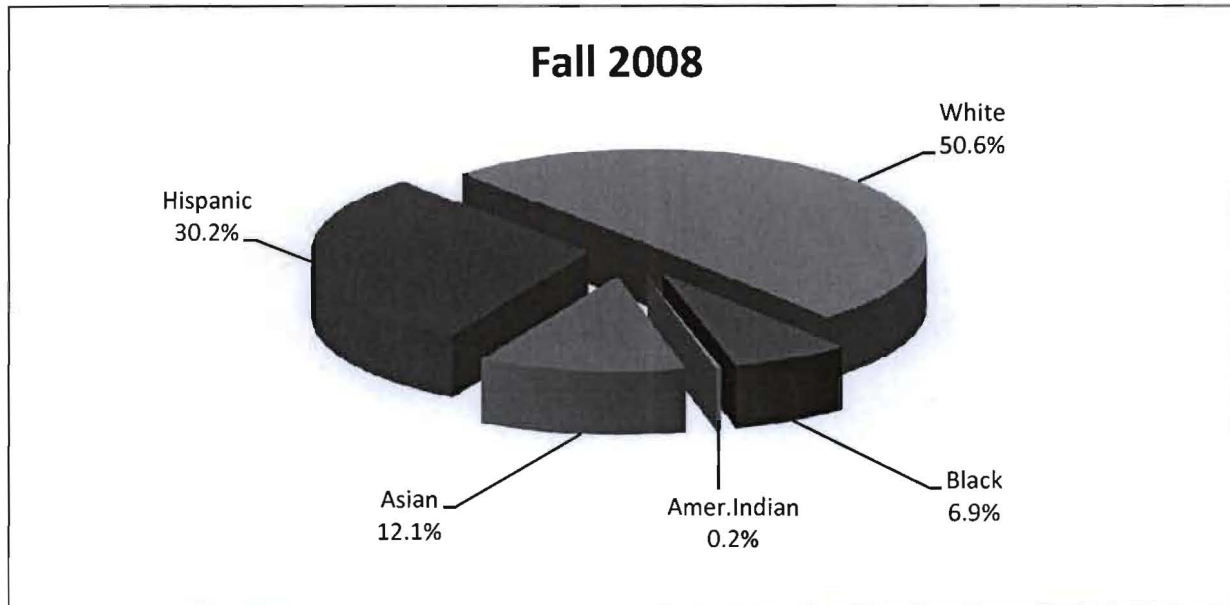
**BERGEN COMMUNITY COLLEGE**  
**Enrollment by Race/Ethnicity**  
**Fall 2004 – Fall 2008**

Racial/Ethnic Group	2004		2005		2006		2007		2008	
	Number	%**	Number	%**	Number	%**	Number	%**	Number	%**
Black	891	6.9%	968	7.7%	894	7.1%	1,032	7.3%	902	6.9%
American Indian	23	0.2%	26	0.2%	35	0.3%	34	0.2%	30	0.2%
Asian	1,594	12.3%	1,623	12.9%	1,602	12.8%	2,119	15.0%	1,592	12.1%
Hispanic	3,144	24.3%	3,439	27.4%	3,339	26.6%	3,916	27.8%	3,958	30.2%
White	6,792	52.5%	6,888	54.9%	6,680	53.2%	6,986	49.6%	6,630	50.6%
<b>Total Known</b>	<b>12,444</b>		<b>12,944</b>		<b>12,550</b>		<b>14,087</b>		<b>13,112</b>	
Non-Resident Alien*	1,032		1,044		1,266		1,234		1,190	
Unknown*	849		774		792		970		981	
<b>TOTAL</b>	<b>14,325</b>		<b>14,762</b>		<b>14,608</b>		<b>15,057</b>		<b>15,283</b>	

\* These categories include individuals of diverse ethnic and racial backgrounds.

\*\* Percent of students with known racial/ethnic identity.

Source: SURE Enrollment File



**BERGEN COMMUNITY COLLEGE**  
**Enrollment by Age, Gender and Status**  
**Fall 2008**

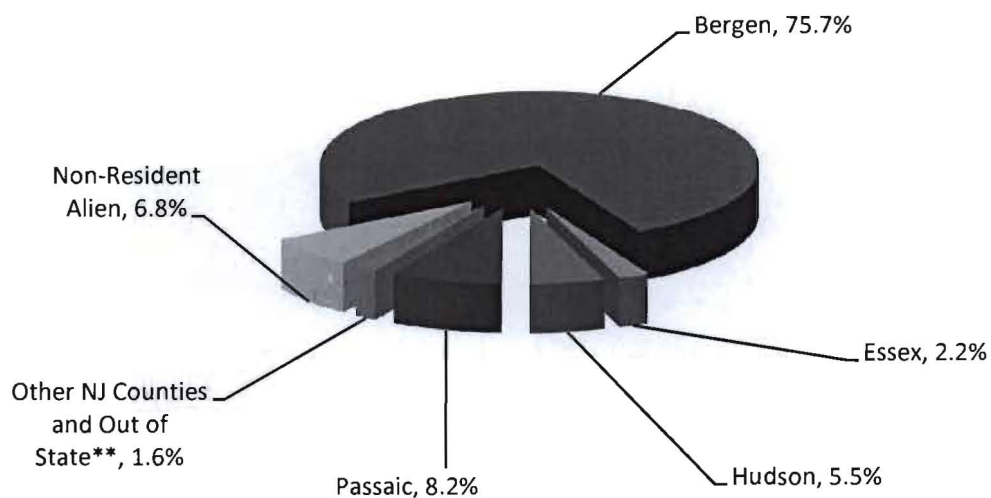
Age Ranges:	Full-Time		Part-Time		Total		All Students	
	Male	Female	Male	Female	Male	Female	Total	% of Total
Under 21 yrs.	3,019	2,512	900	709	3,919	3,221	7,140	46.7%
21 - 24 yrs.	939	812	912	1,004	1,851	1,816	3,667	24.0%
25 - 34 yrs.	323	478	694	1,107	1,017	1,585	2,602	17.0%
35 yrs and older	108	258	433	1,062	541	1,320	1,861	12.2%
Unknown	3	3	5	2	8	5	13	0.1%
<b>Total</b>	<b>4,392</b>	<b>4,063</b>	<b>2,944</b>	<b>3,884</b>	<b>7,336</b>	<b>7,947</b>	<b>15,283</b>	<b>100.0%</b>
Median Age (Years)	19.0 yrs	20.0 yrs	23.0 yrs	26.0 yrs	20.0 yrs	22.0 yrs	21.0 yrs	
Mean Age (Years)	20.7 yrs	22.1 yrs	26.3 yrs	29.8 yrs	22.3 yrs	25.9 yrs	24.5 yrs	

Source: SURE Enrollment File

**BERGEN COMMUNITY COLLEGE  
Enrollment by County of Residence\*  
Fall 2008**

<b>County of Residence</b>	<b>Full-Time</b>	<b>Part-Time</b>	<b>Total</b>
Bergen	6,137	5,431	11,568
Essex	207	131	338
Hudson	526	312	838
Passaic	751	505	1,256
Other NJ Counties and Out of State**	106	144	250
Non-Resident Alien	728	305	1,033
<b>Total</b>	<b>8,455</b>	<b>6,828</b>	<b>15,283</b>

**Fall 2008**



\* Residence is defined as legal residence.

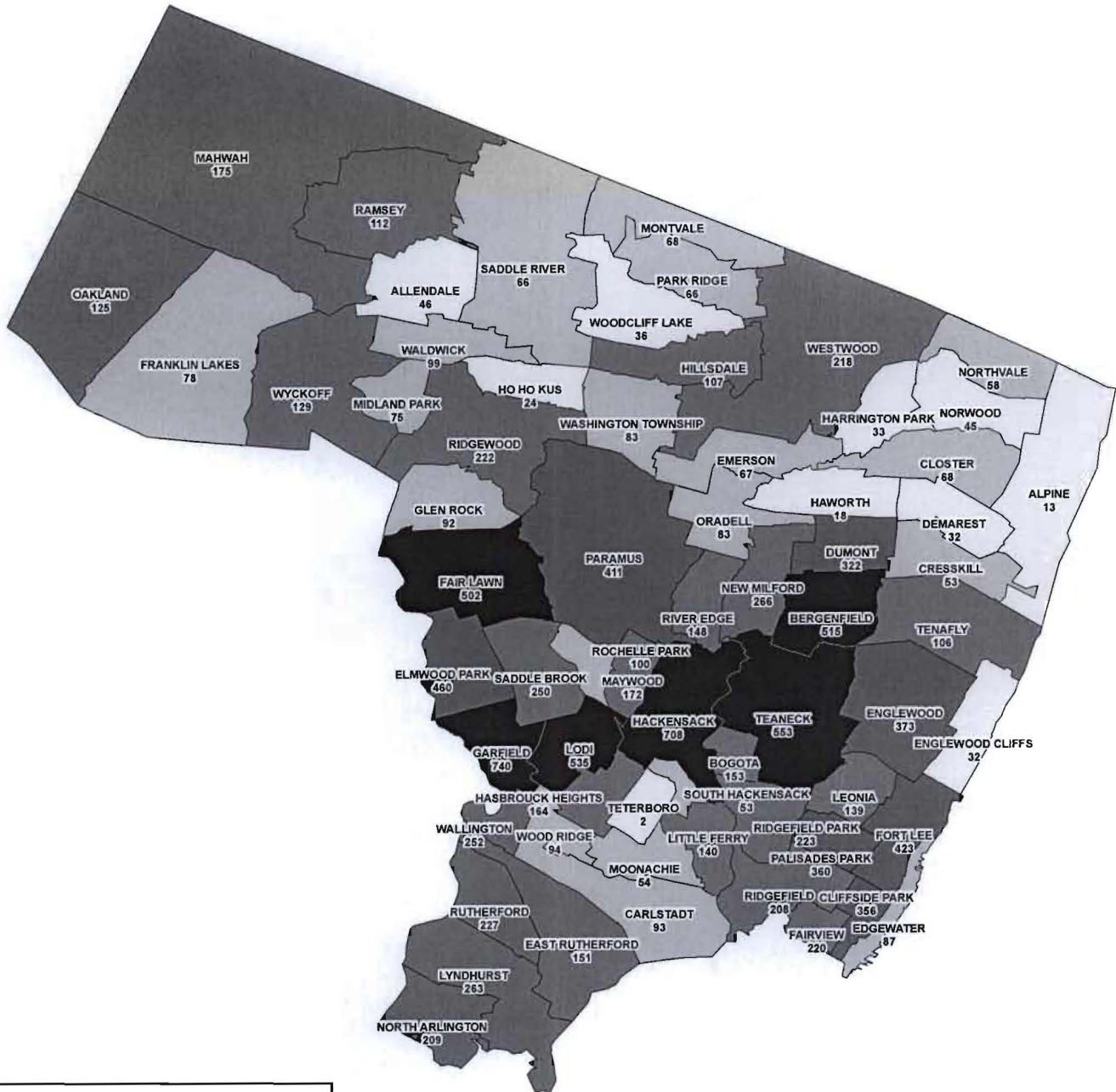
\*\* Includes cases where County of Residence is unknown.

Note: Percents may not total 100 due to rounding.

Source: SURE Enrollment File



**BERGEN COMMUNITY COLLEGE**  
**Credit Student Residency**  
**Fall 2008**  
**Bergen County Residents\***  
**by ZIP Code**



**Students per ZIP Code**



\* Residency determined by mailing address.  
 Note: Localities which share ZIP Codes with another town may not appear on map.

**BERGEN COMMUNITY COLLEGE**  
**Enrollment by Country of Citizenship\***  
**Fall 2006 – Fall 2008**

COUNTRIES	2006	2007	2008	COUNTRIES	2006	2007	2008
United States	10,051	10,759	11,261	Germany	31	23	15
Mexico	42	36	31	Italy	15	15	11
Canada	17	16	12	United Kingdom	19	21	9
<b>North America:</b>	<b>10,110</b>	<b>10,811</b>	<b>11,304</b>	Spain	12	7	6
Dominican Republic	155	164	155	Portugal	12	8	5
Jamaica	109	97	85	<i>Other: Western Europe</i>	21	21	14
Cuba	38	39	29	<b>Western Europe:</b>	<b>110</b>	<b>95</b>	<b>60</b>
Trinidad and Tobago	37	31	21	Poland	490	468	430
Haiti	12	10	6	Albania	76	73	85
<b>Caribbean:</b>	<b>351</b>	<b>341</b>	<b>296</b>	Russia	70	63	68
El Salvador	35	37	26	Ukraine	69	70	55
Honduras	16	12	18	Bulgaria	19	19	20
Costa Rica	16	14	16	Macedonia	37	43	35
Guatemala	13	13	16	Yugoslavia / Indep. States*	10	12	24
<b>Central America:</b>	<b>80</b>	<b>76</b>	<b>76</b>	Slovakia	18	14	9
Colombia	480	380	406	Hungary	11	6	9
Peru	212	228	227	Romania	13	8	7
Ecuador	184	189	157	Czech Republic	5	6	6
Brazil	81	72	89	Fmr. USSR / CIS States	24	52	51
Venezuela	39	33	28	<i>Other: Eastern Europe</i>	34	48	19
Argentina	35	24	27	<b>Eastern Europe:</b>	<b>898</b>	<b>882</b>	<b>818</b>
Chile	25	20	19	<b>TOTAL: Europe</b>	<b>1,008</b>	<b>977</b>	<b>878</b>
Guyana	17	16	16	Turkey	102	112	101
Bolivia	15	16	12	Israel	31	20	28
<b>South America:</b>	<b>1,088</b>	<b>978</b>	<b>981</b>	Syria	28	30	19
<i>Other: The Americas</i>	38	37	28	Iran	20	23	14
<b>TOTAL: The Americas</b>	<b>11,667</b>	<b>12,243</b>	<b>12,685</b>	Armenia	8	14	14
Egypt	37	36	44	Jordan	13	13	13
Ghana	22	33	28	Lebanon	20	20	7
Nigeria	16	22	16	<i>Other: Middle East</i>	50	30	23
South Africa	12	15	14	<b>Middle East:</b>	<b>294</b>	<b>262</b>	<b>219</b>
Kenya	14	12	12	Korea-Republic of	631	613	623
<i>Other</i>	63	39	49	Philippines	228	195	183
<b>TOTAL: Africa</b>	<b>164</b>	<b>157</b>	<b>163</b>	China	43	67	47
Australia	1	2	2	Japan	47	42	36
New Zealand	1	0	0	Thailand	8	12	12
South Pacific Islands	0	1	2	Taiwan	18	13	10
<b>TOTAL: South Pacific</b>	<b>2</b>	<b>3</b>	<b>4</b>	<i>Other: Pacific Rim</i>	28	8	19
India	249	231	213	<b>Pacific Rim:</b>	<b>995</b>	<b>950</b>	<b>930</b>
Pakistan	33	35	42	Afghanistan	22	15	19
Afghanistan	22	15	19	<i>Other: South Asia</i>	13	28	15
<i>Other: South Asia</i>	13	28	15	<b>South Asia:</b>	<b>303</b>	<b>309</b>	<b>289</b>
<b>TOTAL: Asia</b>	<b>1,592</b>	<b>1,521</b>	<b>1,438</b>	<b>TOTAL: Asia</b>	<b>1,592</b>	<b>1,521</b>	<b>1,438</b>
<b>Country Unknown</b>	<b>172</b>	<b>156</b>	<b>115</b>	<b>GRAND TOTAL</b>	<b>14,608</b>	<b>15,057</b>	<b>15,283</b>

\* Countries of citizenship are self-reported.

Source: SURE Enrollment File

**BERGEN COMMUNITY COLLEGE**  
**Enrollment by Status**  
**Fall 1968 – Fall 2008**

<b>STATUS</b>	<b>1968</b>	<b>1969</b>	<b>1970</b>	<b>1971</b>	<b>1972</b>	<b>1973</b>	<b>1974</b>	<b>1975</b>	<b>1976</b>
Full-Time	729	1,283	1,327	1,578	2,695	3,416	3,655	3,931	4,148
Part-Time	725	2,112	2,695	2,892	3,468	3,838	4,636	5,330	5,595
<b>TOTAL</b>	<b>1,454</b>	<b>3,395</b>	<b>4,022</b>	<b>4,470</b>	<b>6,163</b>	<b>7,254</b>	<b>8,291</b>	<b>9,261</b>	<b>9,743</b>

<b>STATUS</b>	<b>1977</b>	<b>1978</b>	<b>1979</b>	<b>1980</b>	<b>1981</b>	<b>1982</b>	<b>1983</b>	<b>1984</b>	<b>1985</b>
Full-Time	3,928	3,676	4,221	4,339	4,191	4,254	4,202	3,930	3,804
Part-Time	6,076	6,592	6,438	7,194	7,241	7,635	7,843	7,317	7,204
<b>TOTAL</b>	<b>10,004</b>	<b>10,268</b>	<b>10,659</b>	<b>11,533</b>	<b>11,432</b>	<b>11,889</b>	<b>12,045</b>	<b>11,247</b>	<b>11,008</b>

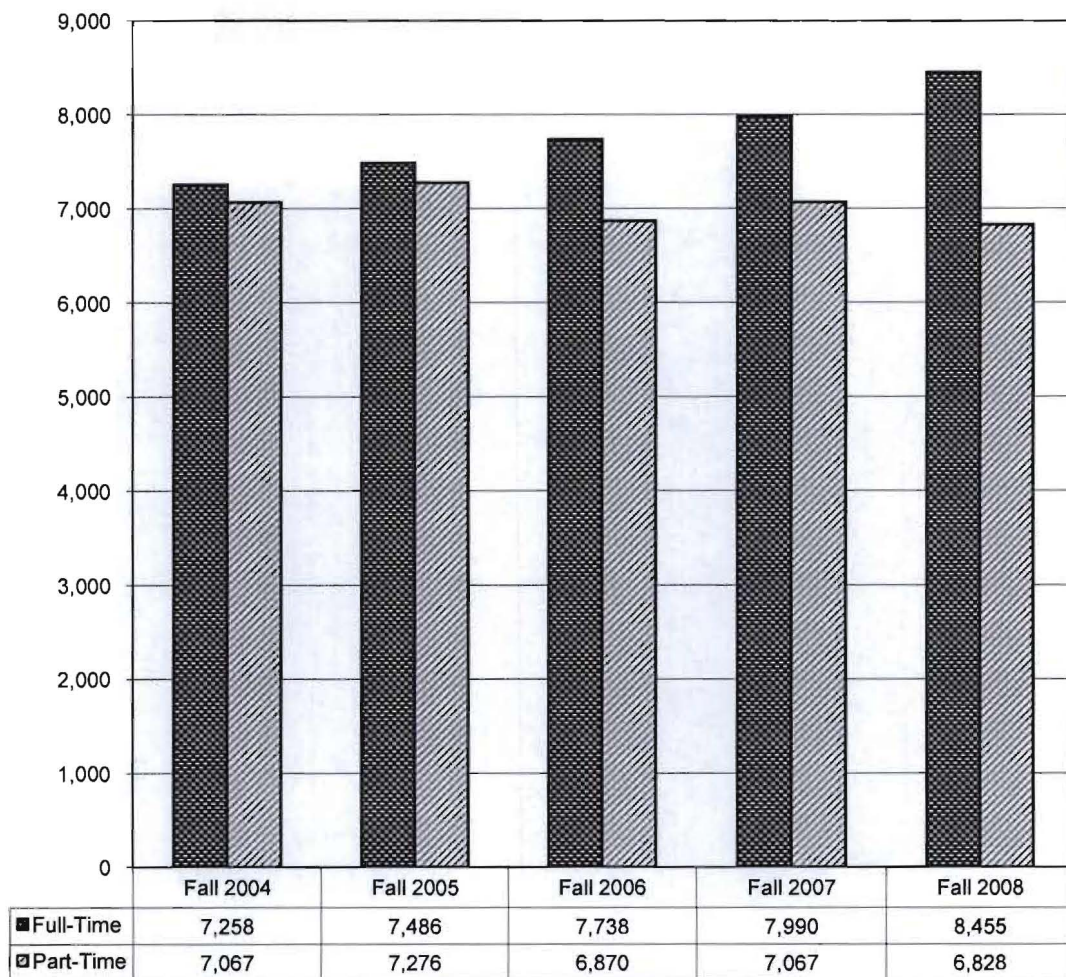
<b>STATUS</b>	<b>1986</b>	<b>1987</b>	<b>1988</b>	<b>1989</b>	<b>1990</b>	<b>1991</b>	<b>1992</b>	<b>1993</b>	<b>1994</b>
Full-Time	3,846	3,712	3,622	4,085	4,235	4,413	4,827	4,958	5,205
Part-Time	7,067	6,977	7,297	7,830	8,052	7,920	7,684	7,896	7,681
<b>TOTAL</b>	<b>10,913</b>	<b>10,689</b>	<b>10,919</b>	<b>11,915</b>	<b>12,287</b>	<b>12,333</b>	<b>12,511</b>	<b>12,854</b>	<b>12,886</b>

<b>STATUS</b>	<b>1995</b>	<b>1996</b>	<b>1997</b>	<b>1998</b>	<b>1999</b>	<b>2000</b>	<b>2001</b>	<b>2002</b>	<b>2003</b>
Full-Time	5,449	5,086	4,926	5,291	5,549	5,580	5,773	6,606	6,907
Part-Time	7,758	7,210	6,372	6,521	6,676	6,413	6,372	6,864	7,084
<b>TOTAL</b>	<b>13,207</b>	<b>12,296</b>	<b>11,298</b>	<b>11,812</b>	<b>12,225</b>	<b>11,993</b>	<b>12,145</b>	<b>13,470</b>	<b>13,991</b>

<b>STATUS</b>	<b>2004</b>	<b>2005</b>	<b>2006</b>	<b>2007</b>	<b>2008</b>
Full-Time	7,258	7,486	7,738	7,990	8,455
Part-Time	7,067	7,276	6,870	7,067	6,828
<b>TOTAL</b>	<b>14,325</b>	<b>14,762</b>	<b>14,608</b>	<b>15,057</b>	<b>15,283</b>

Source: BCHEPR06, SURE Enrollment File

**BERGEN COMMUNITY COLLEGE**  
**Enrollment by Status**  
**Fall 2004 – Fall 2008**



Source: SURE Enrollment File

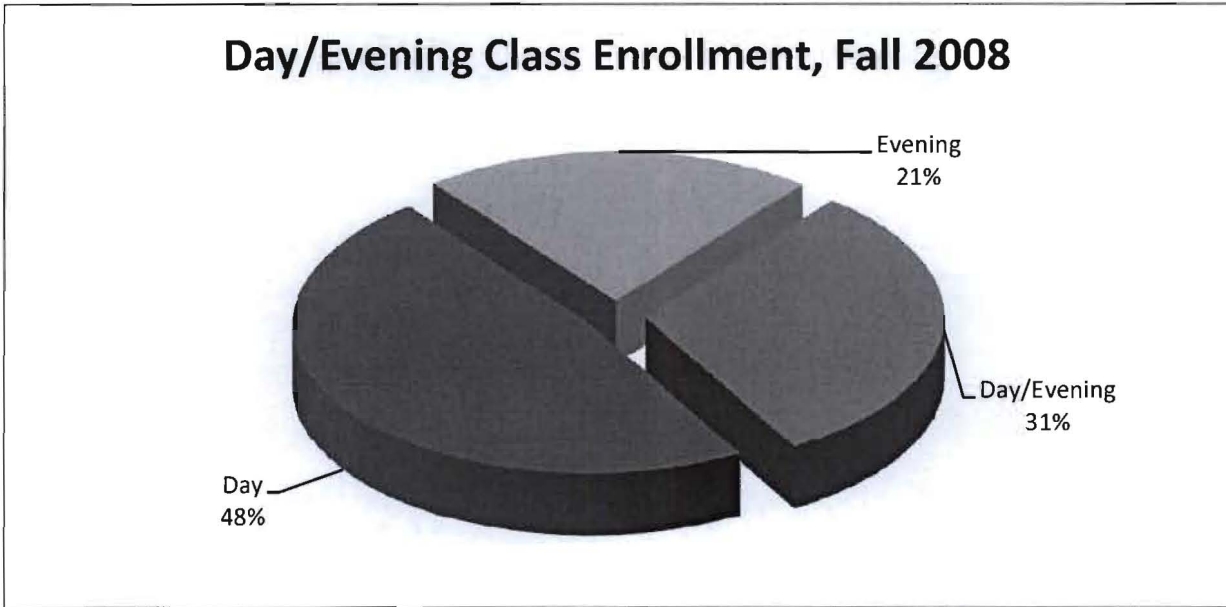
**BERGEN COMMUNITY COLLEGE**  
**Enrollment by Day/Evening**  
**Fall 2004 – Fall 2008**

	2004		2005		2006		2007		2008	
	Number	%**	Number	%**	Number	%**	Number	%**	Number	%**
Day	6,146	46.6%	6,439	48.3%	6628	48.8%	6,901	49.5%	7,049	47.8%
Evening*	3,426	26.0%	3,376	25.3%	3330	24.5%	3,219	23.1%	3,137	21.3%
Day/Evening	3,615	27.4%	3,517	26.4%	3,613	26.6%	3,810	27.4%	4,550	30.9%
<b>TOTAL**</b>	<b>13,187</b>		<b>13,332</b>		<b>13,571</b>		<b>13,930</b>		<b>14,736</b>	

\*Includes Saturday classes

\*\*Total class enrollments excluding online

Source: Datatel

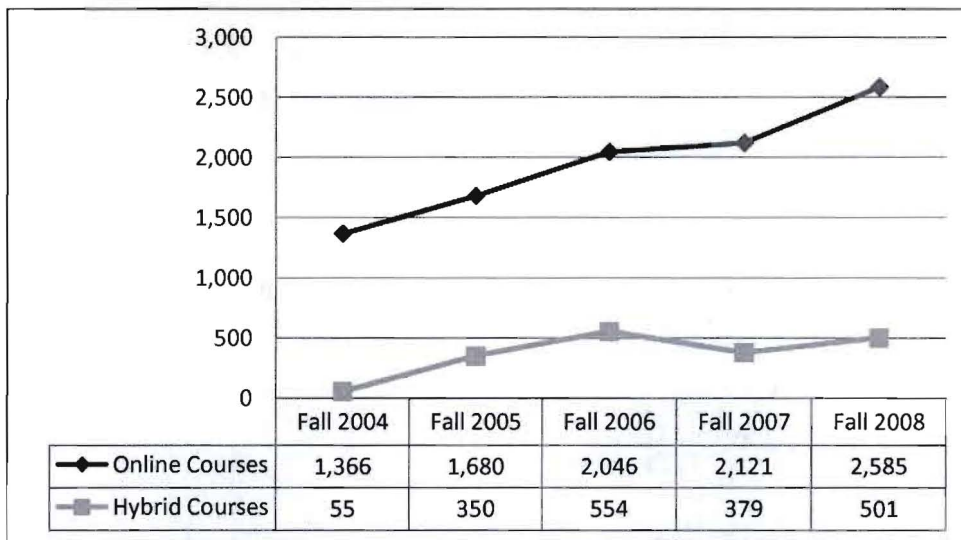


**BERGEN COMMUNITY COLLEGE**  
**Distance Learning Enrollment**  
**Fall 2004 – Fall 2008**

	2004		2005		2006		2007		2008	
	Number	%**	Number	%**	Number	%**	Number	%**	Number	%**
Online Courses	1,366	9.5%	1,680	11.4%	2,046	14.0%	2,121	14.1%	2,585	16.9%
Hybrid Courses	55	0.4%	350	2.4%	554	3.8%	379	2.5%	501	3.3%
<b>TOTAL</b>	<b>1,421</b>	<b>9.9%</b>	<b>2,030</b>	<b>13.8%</b>	<b>2,600</b>	<b>17.8%</b>	<b>2,500</b>	<b>16.6%</b>	<b>3,086</b>	<b>20.2%</b>

\*Unduplicated headcount, based on 10th day numbers

\*\* Percentage of total headcount



## HIGHLIGHTS

- ❖ The proportion of degree-seeking students has increased to 88% of the student population, the highest in college history and an 18% increase in the last 10 years.
- ❖ Enrollment in Associate of Arts (A.A.) programs increased by 6% and enrollment in Associate of Science (A.S.) programs increased by 7% from Fall 2007 to Fall 2008.
- ❖ Enrollment in Associate of Applied Science (A.A.S.) programs decreased by 95 students (-7%) from Fall 2007 to Fall 2008. In addition, enrollment in Certificate (CERT) programs decreased by 7 students (-3%), while enrollment in Certificate of Achievement (COA) programs increased by 5 students (15%).
- ❖ Over 69% of the student population in Fall 2008 was enrolled in transfer programs, compared with 59% in Fall 2004.
- ❖ First-time students represented 26% of the total student population. Sixty-nine percent (69%) of all first-time students were enrolled in transfer programs.
- ❖ First-time, full-time, degree-seeking students represented 31% of all full-time students as well as 17% of the total student population.
- ❖ Programs with the largest increase in number from Fall 2004 to Fall 2008 included General A.S. (Professional Studies), Business Administration, and Psychology in Transfer programs, and Accounting, Banking & Finance, and Veterinary Technology in Career programs.
- ❖ Programs with the greatest decrease in number over the same five-year span included Broadcasting, Computer Science, General A.A. (Liberal Arts) in Transfer programs, and Early Childhood Education, Surgical Technology, and Networking Administration in Career programs.

**BERGEN COMMUNITY COLLEGE**  
**Student Population by Degree Program**  
**Fall 1973 - Fall 2008**

	1973	1974	1975	1976	1977	1978	1979	1980	1981
Transfer Programs	2,217	2,766	2,810	2,937	2,775	2,792	2,807	2,810	3,022
Career Programs	2,143	2,678	3,286	3,398	3,375	3,350	3,694	3,849	3,982
Total Degree	4,360	5,444	6,096	6,335	6,150	6,142	6,501	6,659	7,004
Total Non-Degree	2,894	2,847	3,165	3,408	3,854	4,126	4,158	4,874	4,428
<b>TOTAL</b>	<b>7,254</b>	<b>8,291</b>	<b>9,261</b>	<b>9,743</b>	<b>10,004</b>	<b>10,268</b>	<b>10,659</b>	<b>11,533</b>	<b>11,432</b>

	1982	1983	1984	1985	1986	1987	1988	1989	1990
Transfer Programs	2,965	3,001	3,101	3,239	3,359	3,429	3,446	4,004	4,253
Career Programs	4,145	4,277	3,799	3,562	3,427	3,202	3,031	3,298	3,298
Total Degree	7,110	7,278	6,900	6,801	6,786	6,631	6,477	7,302	7,551
Total Non-Degree	4,779	4,767	4,347	4,207	4,127	4,058	4,442	4,613	4,736
<b>TOTAL</b>	<b>11,889</b>	<b>12,045</b>	<b>11,247</b>	<b>11,008</b>	<b>10,913</b>	<b>10,689</b>	<b>10,919</b>	<b>11,915</b>	<b>12,287</b>

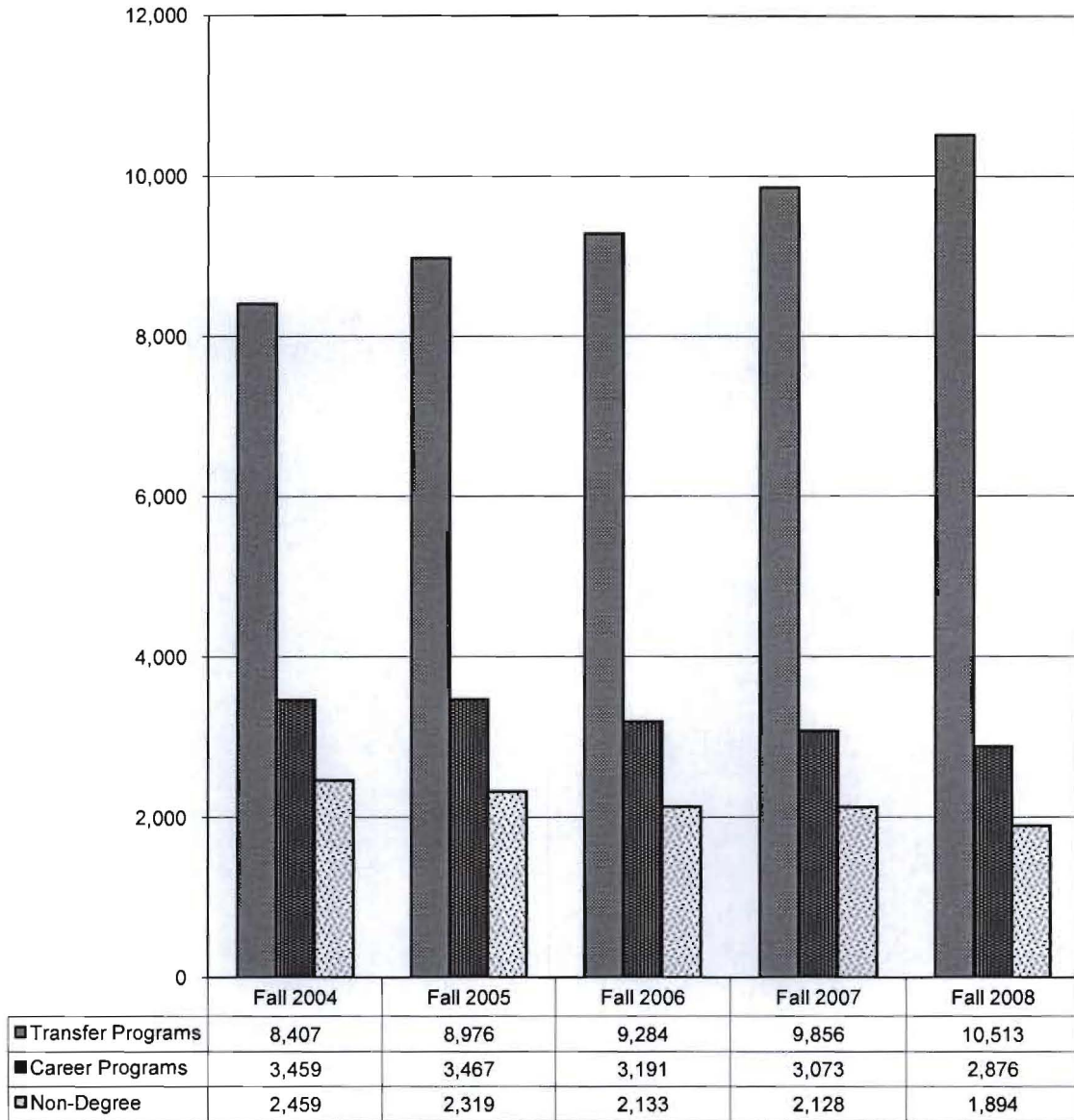
	1991	1992	1993	1994	1995	1996	1997	1998	1999
Transfer Programs	4,622	5,216	5,539	5,841	6,061	5,605	5,441	5,854	5,591
Career Programs	3,485	3,443	3,324	3,392	3,310	3,164	2,926	3,027	2,998
Total Degree	8,107	8,659	8,863	9,233	9,371	8,769	8,367	8,881	8,589
Total Non-Degree	4,226	3,852	3,991	3,653	3,836	3,527	2,931	2,931	3,636
<b>TOTAL</b>	<b>12,333</b>	<b>12,511</b>	<b>12,854</b>	<b>12,886</b>	<b>13,207</b>	<b>12,296</b>	<b>11,298</b>	<b>11,812</b>	<b>12,225</b>

	2000	2001	2002	2003	2004	2005	2006	2007	2008
Transfer Programs	5,737	6,074	7,142	7,834	8,407	8,976	9,284	9,856	10,513
Career Programs	2,940	2,989	3,281	3,355	3,459	3,467	3,191	3,073	2,876
Total Degree	8,677	9,063	10,423	11,189	11,866	12,443	12,475	12,929	13,389
Total Non-Degree	3,316	3,082	3,047	2,802	2,459	2,319	2,133	2,128	1,894
<b>TOTAL</b>	<b>11,993</b>	<b>12,145</b>	<b>13,470</b>	<b>13,991</b>	<b>14,325</b>	<b>14,762</b>	<b>14,608</b>	<b>15,057</b>	<b>15,283</b>

Source: BCHEPR07, SURE Enrollment File



**BERGEN COMMUNITY COLLEGE  
Student Population by Degree Program  
Fall 2004 - Fall 2008**



**BERGEN COMMUNITY COLLEGE**  
**Student Population by Degree Program and Registration Status**  
**Fall 2008**

<b>PROGRAMS</b>	<b>Full-Time</b>	<b>Part-Time</b>	<b>Total</b>	<b>Percent*</b>
<b>Transfer Programs:</b>				
First Time Students	2,150	524	2,674	17.5%
Transfer Students	492	264	756	4.9%
Stop-out/Re-admit	377	787	1,164	7.6%
Continuing Students	3,524	2,395	5,919	38.7%
<b>Career Programs:</b>				
First Time Students	480	162	642	4.2%
Transfer Students	128	91	219	1.4%
Stop-out/Re-admit	53	242	295	1.9%
Continuing Students	776	944	1,720	11.3%
<b>TOTAL DEGREE SEEKING</b>	<b>7,980</b>	<b>5,409</b>	<b>13,389</b>	<b>87.6%</b>
<b>Non-Degree Seeking:</b>				
First Time Students	175	408	583	3.8%
Transfer Students	83	193	276	1.8%
Stop-out/Re-admit	44	311	355	2.3%
Continuing Students	173	507	680	4.4%
<b>TOTAL NON-DEGREE SEEKING</b>	<b>475</b>	<b>1,419</b>	<b>1,894</b>	<b>12.4%</b>
<b>GRAND TOTAL</b>	<b>8,455</b>	<b>6,828</b>	<b>15,283</b>	<b>100.0%</b>

\* Percent of total enrollment.

Source: SURE Enrollment File

**BERGEN COMMUNITY COLLEGE**  
**Associate in Arts**  
**Number of Declared Majors**  
**Fall 2004 – Fall 2008**

	2004			2005			2006			2007			2008		
	Full Time	Part Time	Total	Full Time	Part Time	Total	Full Time	Part Time	Total	Full Time	Part Time	Total	Full Time	Part Time	Total
<b>Liberal Arts:</b>															
General A.A.	2,313	1,682	3,995	2,182	1,662	3,844	2,068	1,305	3,373	2031	1219	3250	2,138	1,248	3,386
Cinema Studies	22	2	24	27	12	39	22	8	30	21	7	28	29	15	44
Communication Arts	107	42	149	102	49	151	87	47	134	96	51	147	95	63	158
Economics	14	7	21	15	11	26	15	7	22	16	3	19	22	8	30
History	46	25	71	32	26	58	47	21	68	56	21	77	66	26	92
Literature	34	15	49	33	17	50	47	18	65	36	29	65	46	20	66
Philosophy	10	4	14	20	12	32	11	9	20	7	10	17	12	6	18
Political Science	35	10	45	40	17	57	38	11	49	40	7	47	34	21	55
Psychology	199	98	297	246	126	372	264	120	384	272	145	417	306	148	454
Religion	0	3	3	2	3	5	3	1	4	2	0	2	2	3	5
Sociology	18	17	35	32	23	55	24	13	37	38	20	58	35	15	50
Social Sciences	9	9	18	15	5	20	10	8	18	7	6	13	7	10	17
Women's Studies	0	1	1	1	2	3	1	3	4	1	1	2	2	1	3
World Languages & Cultures	18	14	32	16	10	26	23	19	42	19	12	31	29	12	41
<b>Fine and Performing Arts:</b>															
Art	78	47	125	88	35	123	73	42	115	98	53	151	119	53	172
Music Arts-General	39	22	61	46	20	66	52	19	71	40	26	66	47	29	76
Music Arts-Business	27	9	36	21	15	36	41	12	53	45	20	65	41	16	57
Music Arts-Comp. Record	26	8	34	23	6	29	29	10	39	34	14	48	28	18	46
Music Arts-Electronic	6	1	7	7	3	10	7	6	13	8	9	17	14	5	19
Theatre- Dance	8	0	8	6	4	10	6	2	8	10	1	11	9	3	12
Theatre- General	12	13	25	16	13	29	14	12	26	20	12	32	18	11	29
Theatre-Acting	31	4	35	26	7	33	28	13	41	28	9	37	25	15	40
Theatre - Tech. Prod.	8	4	12	17	3	20	10	6	16	5	6	11	9	4	13
<b>TOTAL A.A.</b>	<b>3,060</b>	<b>2,037</b>	<b>5,097</b>	<b>3,013</b>	<b>2,081</b>	<b>5,094</b>	<b>2,920</b>	<b>1,712</b>	<b>4,632</b>	<b>2,930</b>	<b>1,681</b>	<b>4,611</b>	<b>3,133</b>	<b>1,750</b>	<b>4,883</b>

Source: SURE Enrollment File

**BERGEN COMMUNITY COLLEGE**  
**Associate in Science**  
**Number of Declared Majors**  
**Fall 2004 – Fall 2008**

	2004			2005			2006			2007			2008		
	Full Time	Part Time	Total	Full Time	Part Time	Total	Full Time	Part Time	Total	Full Time	Part Time	Total	Full Time	Part Time	Total
<b>Natural Sciences &amp; Math:</b>															
Gen. A.S. Nat.Sci./Math	108	57	165	135	56	191	121	89	210	158	95	253	208	107	315
Biology	101	50	151	128	54	182	156	67	223	158	66	224	125	63	188
Biotechnology	-	-	-	-	-	-	-	-	-	7	4	11	13	3	16
Chemistry	41	16	57	45	20	65	35	20	55	38	26	64	44	20	64
Computer Science	118	104	222	90	88	178	92	80	172	83	74	157	93	58	151
Mathematics	21	18	39	32	10	42	36	18	54	29	13	42	27	17	44
Physics	8	3	11	6	3	9	6	5	11	6	6	12	12	4	16
Pre-Chiropractic	5	6	11	4	6	10	3	3	6	2	2	4	3	4	7
<b>Engineering Science:</b>															
Engineering Science	80	50	130	77	63	140	84	59	143	80	75	155	103	59	162
<b>Professional Studies:</b>															
General A.S. Pro.Studies	316	382	698	538	541	1079	791	738	1529	795	818	1613	896	836	1732
Broadcasting	64	42	106	50	40	90	45	37	82	53	35	88	50	37	87
Business Admin.	226	200	426	258	200	458	296	217	513	322	251	573	389	271	660
Bus.Admin.- Acct.	134	105	239	138	123	261	166	144	310	187	158	345	185	145	330
Bus.Admin.- Int'l Trade	65	39	104	80	39	119	64	34	98	62	36	98	71	31	102
Bus.Admin.- Mgmt.	174	148	322	191	154	345	199	138	337	214	149	363	213	138	351
Bus.Admin.-Marketing	90	72	162	96	58	154	115	51	166	120	69	189	133	69	202
Criminal Justice	-	-	-	5	5	10	149	44	193	351	135	486	464	156	620
Education	191	97	288	223	117	340	215	107	322	204	104	308	183	89	272
Exercise Science	50	22	72	50	26	76	45	25	70	63	45	108	74	38	112
Information Technology	-	-	-	-	-	-	-	-	-	0	2	2	14	9	23
Journalism	33	11	44	40	14	54	65	14	79	50	22	72	52	25	77
Social Work	36	27	63	40	39	79	39	40	79	39	39	78	58	41	99
<b>TOTAL A.S.</b>	<b>1,861</b>	<b>1,449</b>	<b>3,310</b>	<b>2,226</b>	<b>1,656</b>	<b>3,882</b>	<b>2,722</b>	<b>1,930</b>	<b>4,652</b>	<b>3,021</b>	<b>2,224</b>	<b>5,245</b>	<b>3,410</b>	<b>2,220</b>	<b>5,630</b>

Note: Dashes indicate that the program was not offered at that time.

Source: SURE Enrollment File

**BERGEN COMMUNITY COLLEGE**  
**Associate in Applied Science**  
**Number of Declared Majors**  
**Fall 2004 – Fall 2008**

	2004			2005			2006			2007			2008		
	Full Time	Part Time	Total	Full Time	Part Time	Total	Full Time	Part Time	Total	Full Time	Part Time	Total	Full Time	Part Time	Total
<b>Allied Health:</b>															
Dental Hygiene	29	52	81	30	58	88	30	46	76	24	52	76	30	48	78
Diag. Med. Sonography	4	17	21	5	20	25	6	24	30	5	24	29	5	20	25
Health Sciences	2	9	11	5	8	13	3	5	8	3	5	8	0	7	7
Medical Lab. Tech.*	22	18	40	15	6	21	2	4	6	1	1	2	0	0	0
Medical Office Assistant	19	27	46	30	34	64	46	34	80	36	34	70	33	34	67
Physical Therapist Asst.*	18	23	41	9	9	18	3	4	7	1	0	1	0	2	2
Radiography	44	32	76	40	43	83	44	44	88	43	44	87	31	27	58
Respiratory Therapy	38	22	60	35	21	56	35	37	72	47	32	79	38	26	64
Vascular Technology*	3	1	4	0	1	1	0	0	0	0	0	0	0	0	0
Veterinary Tech.	6	8	14	10	8	18	5	11	16	9	9	18	14	27	41
<b>Nursing:</b>															
Nursing-Day & Evening	57	235	292	44	270	314	57	247	304	52	229	281	46	234	280
Career Mobility Track	-	-	-	-	-	-	-	-	-	-	-	-	0	1	1
<b>Art:</b>															
Computer Animation	42	31	73	44	25	69	39	22	61	58	24	82	41	33	74
Graph Design/Comp. Graph	101	93	194	98	71	169	103	75	178	102	91	193	122	82	204
<b>Business Administration:</b>															
Accounting	96	111	207	117	110	227	119	100	219	143	124	267	145	123	268
Banking, Credit & Finance***	75	44	119	80	52	132	71	49	120	92	65	157	107	60	167
Paralegal	44	74	118	46	78	124	46	67	113	54	59	113	49	55	104
Legal Studies	-	-	-	-	-	-	-	-	-	1	12	13	1	10	11
Legal Nurse Consultant	0	9	9	0	9	9	0	9	9	2	4	6	5	4	9
<b>Business Technologies:</b>															
HR-Catering/Banquet Mgmt.	52	18	70	43	16	59	45	22	67	41	22	63	38	19	57
HR-Food Service Mgmt.*	0	1	1	0	0	0	0	0	0	0	0	0	0	0	0
HR-Hospitality Mgmt.	54	38	92	64	46	110	79	37	116	58	44	102	61	41	102
Information Technology	47	59	106	33	50	83	41	48	89	28	48	76	37	46	83
Networking Administration	38	79	117	38	56	94	29	53	82	53	51	104	46	47	93
Office Systems Technology*	2	14	16	0	8	8	0	6	6	0	3	3	0	0	0
Office Technology	9	5	14	6	11	17	8	9	17	13	9	22	6	9	15
Travel and Tourism*	22	12	34	16	12	28	2	6	8	0	0	0	0	0	0
Web Develop & Mgmt.	26	14	40	22	16	38	17	19	36	14	19	33	15	11	26
Word Processing	-	-	-	-	-	-	-	-	-	-	-	-	0	1	1
<b>Human Services:</b>															
Correctional Studies	5	1	6	7	3	10	1	8	9	9	5	14	3	4	7
Criminal Justice**	463	251	714	-	-	-	-	-	-	-	-	-	-	-	-
Early Childhood Education	162	114	276	156	114	270	147	89	236	128	88	216	128	82	210
Law Enforcement**	-	-	-	477	278	755	373	248	621	226	174	400	127	129	256
<b>Industrial Design Tech:</b>															
Drafting and Design Tech.	53	36	89	51	49	100	36	42	78	43	38	81	35	40	75
Electronics Technology	28	20	48	29	22	51	24	19	43	22	25	47	41	19	60
Engineering Tech.-General	40	27	67	33	21	54	29	19	48	33	27	60	43	21	64
Manufacturing Technology	5	15	20	3	16	19	4	15	19	8	9	17	5	11	16
<b>Science Technology:</b>															
Environmental Technology	3	1	4	2	2	4	2	2	4	8	5	13	4	4	8
Horticulture	11	21	32	8	19	27	11	16	27	8	19	27	12	16	28
Science Laboratory Tech.	1	1	2	5	2	7	3	4	7	8	2	10	10	4	14
<b>TOTAL A.A.S.</b>	<b>1,621</b>	<b>1,533</b>	<b>3,154</b>	<b>1,601</b>	<b>1,564</b>	<b>3,165</b>	<b>1,460</b>	<b>1,440</b>	<b>2,900</b>	<b>1,373</b>	<b>1,397</b>	<b>2,770</b>	<b>1,278</b>	<b>1,297</b>	<b>2,575</b>

Note: Dashes indicate that the program was not offered at that time.

\* Program has been discontinued.

\*\* Due to a title change, Criminal Justice is now Law Enforcement.

\*\*\* Due to a title change, Banking, Credit and Finance is now Banking and Finance.

Source: SURE Enrollment File

**BERGEN COMMUNITY COLLEGE**  
**Certificate Programs**  
**Number of Declared Majors**  
**Fall 2004 – Fall 2008**

	2004			2005			2006			2007			2008		
	Full Time	Part Time	Total	Full Time	Part Time	Total	Full Time	Part Time	Total	Full Time	Part Time	Total	Full Time	Part Time	Total
Comp Aided Drafting	3	14	17	4	8	12	6	8	14	3	10	13	2	11	13
Computer Animation	12	5	17	10	10	20	13	8	21	13	5	18	6	4	10
Computer Graphics	8	12	20	15	8	23	16	7	23	14	7	21	16	7	23
Computer Science	25	24	49	19	10	29	11	17	28	13	14	27	11	9	20
Computer Technical Support**	8	17	25	7	10	17	7	11	18	7	12	19	4	13	17
Culinary Arts	17	19	36	14	16	30	17	11	28	15	8	23	10	17	27
Database Programming and Admin***	-	-	-	-	-	-	-	-	-	-	-	-	1	0	1
E-Commerce: Bus. Emphasis	-	-	-	-	-	-	1	0	1	2	2	4	1	1	2
Environmental Tech.	1	0	1	0	0	0	0	0	0	1	1	2	1	1	2
Exercise Science	8	5	13	10	5	15	10	6	16	9	6	15	9	9	18
Floral Design	2	3	5	3	4	7	2	3	5	2	2	4	2	4	6
Grounds Management	1	1	2	0	0	0	1	0	1	0	0	0	0	0	0
Hospitality Management	4	4	8	11	3	14	7	7	14	3	8	11	4	5	9
Landscaping	4	3	7	4	2	6	1	4	5	1	0	1	3	3	6
Medical Office Admin. Asst.	3	5	8	4	8	12	4	11	15	1	10	11	4	8	12
Music Business	5	1	6	7	2	9	5	0	5	0	4	4	6	1	7
Music Technology	3	0	3	5	1	6	4	3	7	5	0	5	1	3	4
Network & Web Development*	2	7	9	3	5	8	2	6	8	0	7	7	1	0	1
Office Studies/Word Process.*	0	3	3	0	2	2	0	0	0	0	0	0	0	0	0
Office Technology	1	3	4	0	6	6	2	9	11	5	2	7	4	6	10
Radiation Therapy Technology	-	-	-	9	1	10	11	0	11	5	0	5	8	0	8
Small Business Mgmt.	9	5	14	12	7	19	12	8	20	16	11	27	13	8	21
Surgical Technology Day/Evening	12	31	43	7	35	42	11	19	30	12	20	32	8	11	19
Transfer Studies: Liberal Arts	-	-	-	-	-	-	-	-	-	7	1	8	11	3	14
Transfer Studies: Sci., Tech., & Prof. Studies	-	-	-	-	-	-	-	-	-	2	1	3	5	1	6
Travel Service	4	4	8	2	1	3	2	1	3	0	1	1	0	1	1
U.S. Studies	0	1	1	1	1	2	0	3	3	1	1	2	4	1	5
Vascular Technology***	-	-	-	-	-	-	-	-	-	-	-	-	1	0	1
<b>TOTAL CERTIFICATES</b>	<b>132</b>	<b>167</b>	<b>299</b>	<b>147</b>	<b>145</b>	<b>292</b>	<b>145</b>	<b>142</b>	<b>287</b>	<b>137</b>	<b>133</b>	<b>270</b>	<b>136</b>	<b>127</b>	<b>263</b>

**Certificates of Achievement**  
**Fall 2004 - Fall 2008**

	2004			2005			2006			2007			2008		
	Full Time	Part Time	Total	Full Time	Part Time	Total	Full Time	Part Time	Total	Full Time	Part Time	Total	Full Time	Part Time	Total
Biotechnology	-	-	-	-	-	-	-	-	-	2	1	3	3	0	3
Commercial Music Production	1	0	1	2	1	3	0	0	0	4	2	6	3	2	5
Environmental Technology	0	0	0	0	0	0	0	0	0	3	0	3	1	0	1
Finance***	-	-	-	-	-	-	-	-	-	-	-	-	3	0	3
Geographic Info. Systems	0	0	0	0	0	0	0	0	0	0	0	0	1	0	1
Manufacturing Design	0	1	1	1	1	2	0	0	0	2	0	2	1	0	1
Machine Tooling	-	-	-	-	-	-	-	-	-	3	1	4	3	3	6
Professional Cooking	3	1	4	3	2	5	1	3	4	2	4	6	0	4	4
Quality Assurance	-	-	-	-	-	-	-	-	-	3	0	3	2	1	3
Real Estate	-	-	-	-	-	-	-	-	-	2	4	6	5	4	9
Special Imaging for Rad. Tech.***	-	-	-	-	-	-	-	-	-	-	-	-	0	2	2
<b>TOTAL C.O.A.</b>	<b>4</b>	<b>2</b>	<b>6</b>	<b>6</b>	<b>4</b>	<b>10</b>	<b>1</b>	<b>3</b>	<b>4</b>	<b>21</b>	<b>12</b>	<b>33</b>	<b>22</b>	<b>16</b>	<b>38</b>

Note: Dashes indicate that the program was not offered at that time.

\* Program has been discontinued.

\*\* Due to a title change, Computer Tech./Help Desk is now Computer Technical Support.

\*\*\* New Programs: Database Programming & Administration; Finance; Special Imaging for Radiography Technology; Vascular Technology

Source: SURE Enrollment File

**BERGEN COMMUNITY COLLEGE**  
**Transfer Programs**  
**Five-Year Change**  
**Fall 2004 – Fall 2008**

Degree	Program	Fall 2004	Fall 2008	Change	% Change
AS	General, Professional Studies	698	1732	1,034	148.1%
AS	Business Admin.	426	660	234	54.9%
AA	Psychology	297	454	157	52.9%
AS	General, Natural Science/Math	165	315	150	90.9%
AS	Business Admin: Accounting	239	330	91	38.1%
AA	Art	125	172	47	37.6%
AS	Business Admin: Marketing	162	202	40	24.7%
AS	Exercise Science	72	112	40	55.6%
AS	Biology	151	188	37	24.5%
AS	Social Work	63	99	36	57.1%
AS	Journalism	44	77	33	75.0%
AS	Bus.Admin: Management	322	351	29	9.0%
AA	History	71	92	21	29.6%
AA	Music Arts-Business	36	57	21	58.3%
AA	Cinema Studies	24	44	20	83.3%
AA	Literature	49	66	17	34.7%
AA	Sociology	35	50	15	42.9%
AA	Music Arts-General	61	76	15	24.6%
AA	Music Arts-Comp. Record	34	46	12	35.3%
AA	Music Arts-Electronic	7	19	12	171.4%
AA	Political Science	45	55	10	22.2%
AA	Communication Arts	149	158	9	6.0%
AA	Economics	21	30	9	42.9%
AA	World Languages & Cultures	32	41	9	28.1%
AS	Chemistry	57	64	7	12.3%
AA	Theatre-Acting	35	40	5	14.3%
AS	Mathematics	39	44	5	12.8%
AS	Physics	11	16	5	45.5%
AA	Philosophy	14	18	4	28.6%
AA	Theatre- Dance	8	12	4	50.0%
AA	Theatre- General	25	29	4	16.0%
AA	Religion	3	5	2	66.7%
AA	Women's Studies	1	3	2	200.0%
AA	Theatre - Tech. Prod.	12	13	1	8.3%
AS	Engineering Science	130	130	0	0.0%
AA	Social Sciences	18	17	-1	-5.6%
AS	Bus.Admin: International Trade	104	102	-2	-1.9%
AS	Pre-Chiropractic	11	7	-4	-36.4%
AS	Education	288	272	-16	-5.6%
AS	Broadcasting	106	87	-19	-17.9%
AS	Computer Science	222	151	-71	-32.0%
AA	General, Liberal Arts	3,995	3,385	-610	-15.3%

*Note: New and discontinued programs as of Fall 2008 not included*

**BERGEN COMMUNITY COLLEGE**  
**Career Programs**  
**Five-Year Change**  
**Fall 2004 – Fall 2008**

Degree	Program	Fall 2004	Fall 2008	Change	% Change
AAS	Accounting	207	268	61	29.5%
AAS	Banking & Finance	119	166	47	39.5%
AAS	Veterinary Tech.	14	41	27	192.9%
AAS	Medical Office Assistant	46	67	21	45.7%
AAS	Electronics Technology	48	60	12	25.0%
AAS	Science Laboratory Tech.	2	14	12	600.0%
AAS	Graph Design/Comp. Graph	194	204	10	5.2%
AAS	HR-Hospitality Mgmt.	92	102	10	10.9%
Cert.	Small Bus. Mgmt.	14	21	7	50.0%
Cert.	Office Technology	4	10	6	150.0%
Cert.	Exercise Science	13	18	5	38.5%
AAS	Diag.Med.Sonography	21	25	4	19.0%
AAS	Respiratory Therapy	60	64	4	6.7%
AAS	Environmental Technology	4	8	4	100.0%
Cert.	Medical Off. Admin. Asst.	8	12	4	50.0%
Cert.	U.S. Studies	1	5	4	400.0%
COA	Commercial Music Production	1	5	4	400.0%
Cert.	Computer Graphics	20	23	3	15.0%
AAS	Computer Animation	73	74	1	1.4%
AAS	Office Technology	14	15	1	7.1%
AAS	Correctional Studies	6	7	1	16.7%
Cert.	Floral Design	5	6	1	20.0%
Cert.	Hospitality Mgmt.	8	9	1	12.5%
Cert.	Music Business	6	7	1	16.7%
Cert.	Music Technology	3	4	1	33.3%
AAS	Legal Nurse Consultant	9	9	0	0.0%
Cert.	Environmental Tech.	1	1	0	0.0%
COA	Manufacturing Design	1	1	0	0.0%
COA	Professional Cooking	4	4	0	0.0%
Cert.	Landscaping	7	6	-1	-14.3%
Cert.	Grounds Management	2	0	-2	-100.0%
AAS	Dental Hygiene	81	78	-3	-3.7%
AAS	Engineering Tech.-General	67	64	-3	-4.5%
AAS	Health Sciences	11	7	-4	-36.4%
AAS	Manufacturing Technology	20	16	-4	-20.0%
AAS	Horticulture	32	28	-4	-12.5%
Cert.	Comp Aided Drafting	17	13	-4	-23.5%
Cert.	Computer Animation	17	10	-7	-41.2%
Cert.	Travel Service	8	1	-7	-87.5%
Cert.	Culinary Arts	36	27	-9	-25.0%
Cert.	Computer Technical Support	25	15	-10	-40.0%
AAS	Nursing-Day & Evening	292	280	-12	-4.1%
AAS	HR-Catering/Banquet Mgmt.	70	57	-13	-18.6%
AAS	Paralegal	118	104	-14	-11.9%
AAS	Web Develop & Mgmt.	40	26	-14	-35.0%
AAS	Drafting and Design Tech.	89	75	-14	-15.7%
AAS	Radiography	76	58	-18	-23.7%
AAS	Information Technology	106	83	-23	-21.7%
AAS	Networking Administration	117	93	-24	-20.5%
Cert.	Surgical Technology	43	19	-24	-55.8%
Cert.	Computer Science	49	20	-29	-59.2%
AAS	Early Childhood Education	276	210	-66	-23.9%

*Note: New and discontinued programs as of Fall 2008 not included*

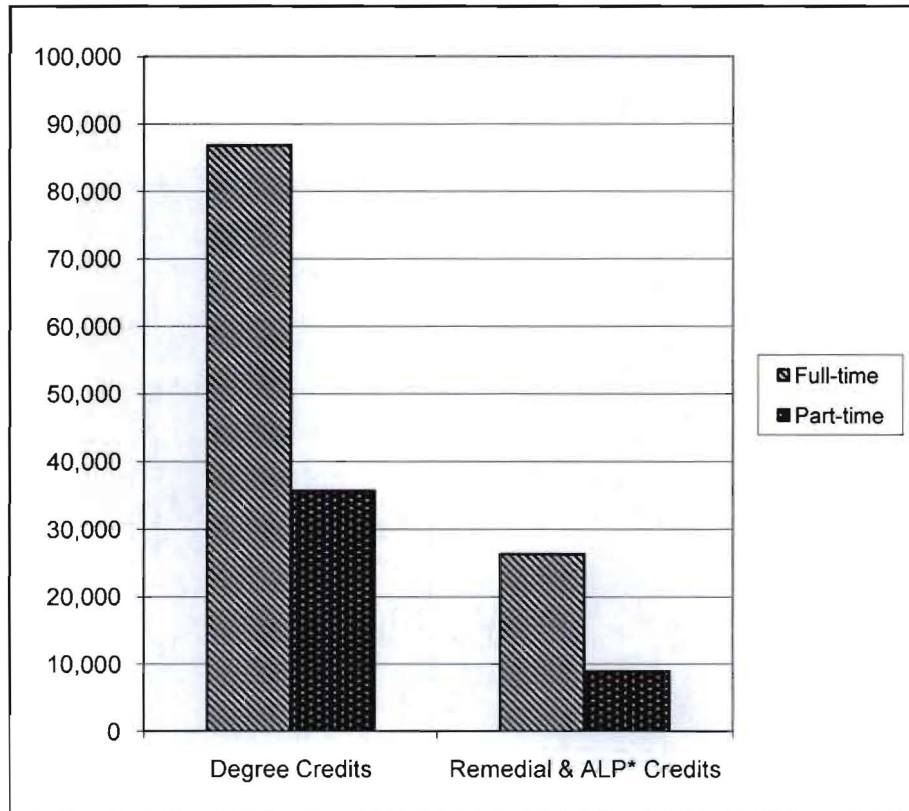


## HIGHLIGHTS

- ❏ In Fall 2008, students were enrolled in a total of 157,747 credits. Seventy-seven percent (77%; 122,471 credits) of these credit enrollments were degree credits with the other 23% (35,276 credits) coming from remedial and American Language Program.
  
- ❏ In Fall 2008, students in transfer and career programs were enrolled in 144,276 credits, a 5% increase from Fall 2007. Non-degree students were enrolled in a total of 13,471 credits, a decrease of -9% from Fall 2007.
  
- ❏ Of the total 157,747 enrolled credits in Fall 2008, 72% were generated by full-time students, an increase of 2% from Fall 2007.
  
- ❏ The percentage of total semester credits consisting of credits from distance education courses (online and hybrid) has nearly doubled over the past five years, from 4.8% in Fall 2004 to 8.5% in Fall 2008.

**BERGEN COMMUNITY COLLEGE  
Number of Credits by Student Status  
Fall 2008**

<b>Student Status</b>	<b>Degree Credits</b>	<b>Remedial &amp; ALP* Credits</b>	<b>Total</b>
Full-time	86,802	26,345	113,147
Part-time	35,669	8,931	44,600
<b>Total</b>	<b>122,471</b>	<b>35,276</b>	<b>157,747</b>

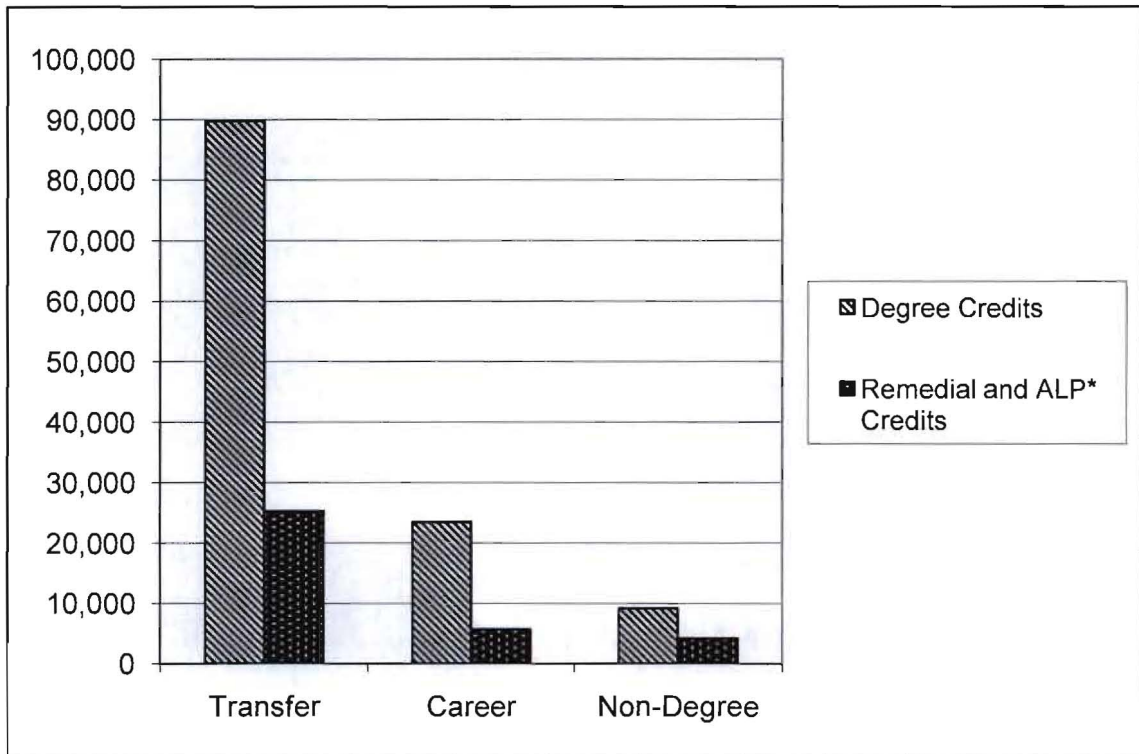


\* American Language Program.

Source: SURE Enrollment File

**BERGEN COMMUNITY COLLEGE  
Number of Credits by Degree Program  
Fall 2008**

	<b>Degree Credits</b>	<b>Remedial &amp; ALP* Credits</b>	<b>Total</b>
Transfer Programs	89,796	25,283	115,079
Career Programs	23,467	5,730	29,197
Total Degree	113,263	31,013	144,276
Non-Degree	9,208	4,263	13,471
<b>Total</b>	<b>122,471</b>	<b>35,276</b>	<b>157,747</b>

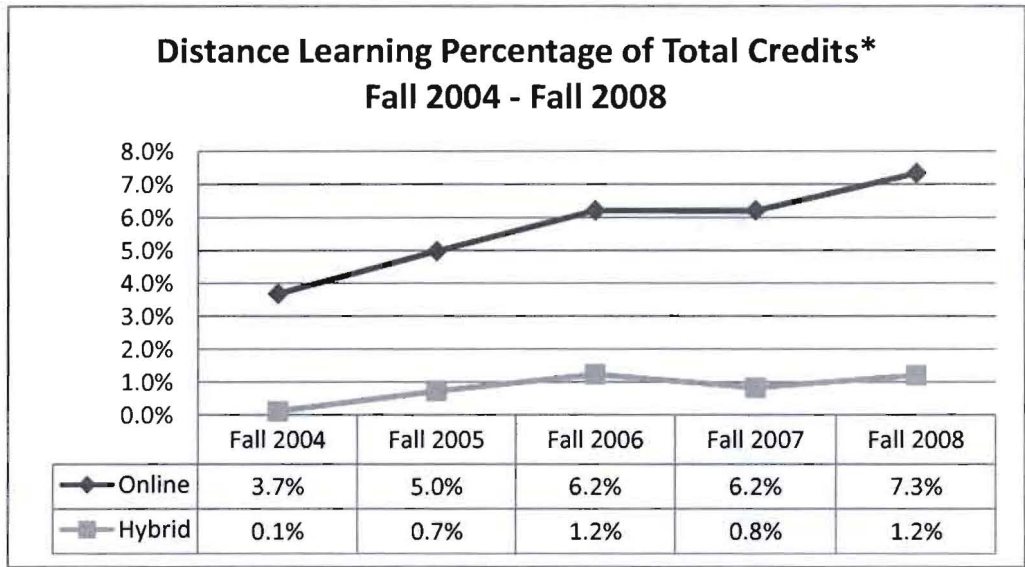


\* American Language Program.

Source: SURE Enrollment File

**BERGEN COMMUNITY COLLEGE  
Distance Education Credits  
Fall 2004 - Fall 2008**

<b>Student Status</b>	<b>Fall 2004</b>	<b>Fall 2005</b>	<b>Fall 2006</b>	<b>Fall 2007</b>	<b>Fall 2008</b>
Online	5,203	7,295	9,152	9,462	11,572
Hybrid	171	1,069	1,815	1,270	1,899
Face-to-face	136,143	139,271	138,262	143,034	146,175
<b>Total</b>	<b>141,346</b>	<b>146,566</b>	<b>147,414</b>	<b>152,496</b>	<b>157,747</b>



Source: DataTel

\*Percentage of online and hybrid credits out of total semester credits

## HIGHLIGHTS

- Non-credit enrollments are offered in three areas: Continuing Education, Ciarco Learning Center and the Institute for Learning in Retirement.
  
- The total unduplicated headcount of the Open Enrollment sections in each non-credit area for Fiscal Year 2008 was 8,957 students.
  
- The total number of contact hours taken by non-credit students was 573,130 in FY 2008, a decrease of about 2% from FY 2007.

**BERGEN COMMUNITY COLLEGE**  
**Continuing Education Enrollment**  
**Fiscal Year 2008\*\***

		<b>Open Enrollment</b>	<b>Customized Training</b>	<b>Total</b>
	Unduplicated headcount**	3,987	***	3,987
Number of enrollments	Fundable enrollments	1,839	0	1,839
	Non fundable enrollments	4,179	810	4,989
	Total enrollments	6,018	810	6,828
Contact hours	Fundable contact hours	52,191.00	0.00	52,191.00
	Non fundable contact hours	70,784.00	16,228.00	87,012.00
	Total contact hours	122,975.00	16,228.00	139,203.00
Enrollments by audience	Adult	6,503	810	7,313
	Senior	0	0	0
	Youth	410	0	410
Enrollments by content	Career	4,808	810	5,618
	Avocational	1,210	0	1,210

Note: As reported to New Jersey Council of County Colleges, 10/08

\* There may be some duplication of individuals in open enrollment courses and customized training courses.

\*\* The open enrollment courses which are included are those which began within FY2008 (7/1/07-6/30/08). The customized training courses which are included are those which ended within FY2007 (7/1/07-6/30/08).

\*\*\*Unduplicated headcount unavailable for Customized Training courses.

**BERGEN COMMUNITY COLLEGE**  
**Ciarco Learning Center Enrollment**  
**Fiscal Year 2008\*\***

		Open Enrollment	Customized Training	Total
	Unduplicated headcount**	4,063	***	4,063
Number of enrollments	Fundable enrollments	4,604.00	0	4,604
	Non fundable enrollments	5,075.00	144	5,219
	Total enrollments	9,679.00	144	9,823
Contact hours	Fundable contact hours	220,013.00	0.00	220,013.00
	Non fundable contact hours	181,899.00	2,298.00	184,197.00
	Total contact hours	401,912.00	2,298.00	404,210.00
Enrollments by audience	Adult	9,612	144	9,756
	Senior	0	0	0
	Youth	0	0	0
Enrollments by content	Career	9,612	144	9,756
	Avocational	0	0	0

*Note: As reported to New Jersey Council of County Colleges, 10/08*

*\* There may be some duplication of individuals in open enrollment courses and customized training courses.*

*\*\* The open enrollment courses which are included are those which began within FY2008 (7/1/07-6/30/08). The customized training courses which are included are those which ended within FY2007 (7/1/07-6/30/08).*

*\*\*\*Unduplicated headcount unavailable for Customized Training courses.*

**BERGEN COMMUNITY COLLEGE**  
**Institute for Learning in Retirement Enrollment**  
**Fiscal Year 2008**

		<b>Open Enrollment</b>
	Unduplicated headcount	907
Number of enrollments	Fundable enrollments	0
	Non fundable enrollments	3,839
	Total enrollments	3,839
Contact hours	Fundable contact hours	0.00
	Non fundable contact hours	29,717.00
	Total contact hours	29,717.00
Enrollments by audience	Adult	0
	Senior	3,839
	Youth	0
Enrollments by content	Career	0
	Avocational	3,839

*Note: As reported to New Jersey Council of County Colleges, 10/08*



## HIGHLIGHTS

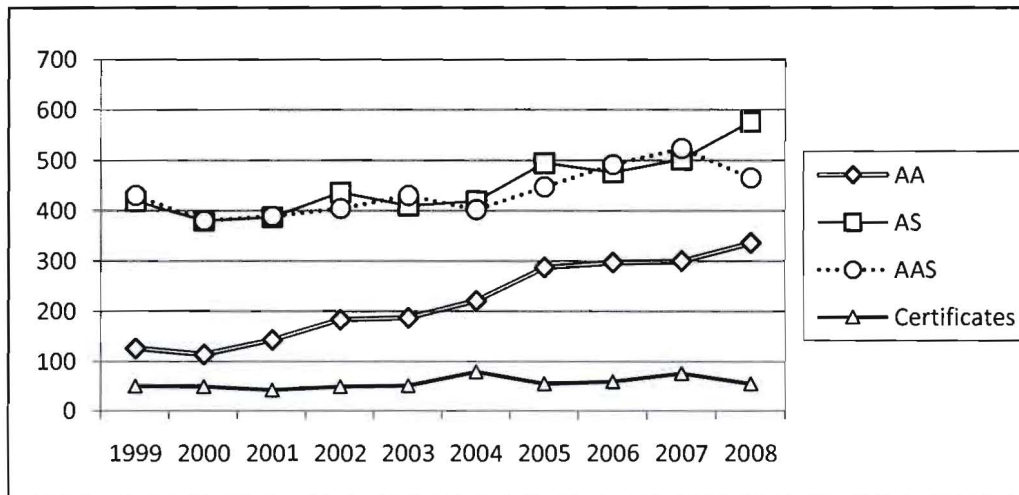
- The 1,433 degrees and certificates awarded to students during the 2008 academic year again set a new high for the college.
  
- The number of degrees awarded in Transfer programs (A.A. and A.S) increased by 11%, from 823 in 2007 to 913 in 2008.
  
- The number of degrees awarded in Career programs (A.A.S and Certificate/COA) decreased by 10%, from 577 in 2007 to 520 in 2008.
  
- Over the past 10 years (1999-2008), 11,619 degrees and certificates have been awarded, including:
  - 2,194 A.A. Degrees
  - 4,521 A.S. Degrees
  - 4,339 A.A.S Degrees
  - 565 Certificates

**BERGEN COMMUNITY COLLEGE**  
**Degrees and Certificates Awarded**  
**1999 – 2008**

DEGREE PROGRAM	1999	2000	2001	2002	2003
A.A. Degrees	126	114	143	183	187
A.S. Degrees	419	380	387	436	410
<b>Total Transfer Programs</b>	<b>545</b>	<b>494</b>	<b>530</b>	<b>619</b>	<b>597</b>
A.A.S. Degrees	430	380	389	404	430
Certificates	50	49	42	49	51
<b>Total Career Programs</b>	<b>480</b>	<b>429</b>	<b>431</b>	<b>453</b>	<b>481</b>
<b>TOTAL DEGREES AWARDED</b>	<b>1,025</b>	<b>923</b>	<b>961</b>	<b>1,072</b>	<b>1,078</b>

DEGREE PROGRAM	2004	2005	2006	2007	2008
A.A. Degrees	221	287	297	300	336
A.S. Degrees	419	494	476	523	577
<b>Total Transfer Programs</b>	<b>640</b>	<b>781</b>	<b>773</b>	<b>823</b>	<b>913</b>
A.A.S. Degrees	402	447	491	501	465
Certificates	79	55	59	76	55
<b>Total Career Programs</b>	<b>481</b>	<b>502</b>	<b>550</b>	<b>577</b>	<b>520</b>
<b>TOTAL DEGREES AWARDED</b>	<b>1,121</b>	<b>1,283</b>	<b>1,323</b>	<b>1,400</b>	<b>1,433</b>

Source: BCHEPR10, SURE Graduate File



**BERGEN COMMUNITY COLLEGE**  
**Associate in Arts**  
**Degrees Awarded**  
**2004 – 2008**

<b>Programs</b>	<b>2004</b>	<b>2005</b>	<b>2006</b>	<b>2007</b>	<b>2008</b>
<b>Liberal Arts:</b>					
General A.A.	157	205	195	184	235
Cinema Studies	0	1	1	2	1
Communication Arts	4	10	11	12	9
Economics	0	0	0	1	1
Foreign Languages	1	4	2	6	3
History	4	6	6	9	5
Literature	1	2	3	5	7
Philosophy and Religion	3	1	5	3	3
Political Science	3	7	5	6	2
Psychology	19	24	34	40	41
Social Science	4	0	0	0	0
Sociology	7	2	2	5	7
<b>Fine and Performing Arts:</b>					
Art	9	12	17	10	8
Music-General	2	4	4	5	2
Music-Business	2	2	3	2	6
Music-Computer Based Recording	2	1	4	3	0
Music-Electronic	1	0	1	1	1
Theater Arts-General	0	3	1	3	2
Theater Arts-Acting	1	2	1	3	2
Theater Arts-Tech. Prod.	1	1	2	0	0
Theater Arts-Dance	0	0	0	0	1
<b>TOTAL A.A.</b>	<b>221</b>	<b>287</b>	<b>297</b>	<b>300</b>	<b>336</b>

Source: SURE Graduate File

**BERGEN COMMUNITY COLLEGE**  
**Associate in Science**  
**Degrees Awarded**  
**2004 – 2008**

Programs	2004	2005	2006	2007	2008
<b>Natural Sciences and Mathematics:</b>					
General A.S. - Natural Sciences and Mathematics	16	33	25	34	40
Biology	10	2	5	3	7
Chemistry	0	3	4	3	2
Computer Science	19	19	17	16	9
Mathematics	1	6	2	4	3
Physics	0	1	0	1	0
<b>Engineering Science:</b>					
Engineering Science	8	7	6	7	8
<b>Professional Studies:</b>					
General A.S. - Professional Concentration	183	212	209	223	221
Broadcasting	7	20	10	12	9
Business Administration	58	61	65	72	75
Business Administration - Accounting	21	32	34	49	62
Business Administration - International Trade	15	16	11	11	13
Business Administration - Management	35	39	38	37	43
Business Administration - Marketing	22	20	16	14	23
Criminal Justice	0	0	0	7	24
Education	14	11	15	13	13
Exercise Science	6	7	6	3	12
Journalism	1	1	3	3	4
Social Work	3	4	10	11	9
<b>TOTAL A.S.</b>	<b>419</b>	<b>494</b>	<b>476</b>	<b>523</b>	<b>577</b>

Source: SURE Graduate File

**BERGEN COMMUNITY COLLEGE**  
**Associate in Applied Science**  
**Degrees Awarded**  
**2004 – 2008**

<b>Programs</b>	<b>2004</b>	<b>2005</b>	<b>2006</b>	<b>2007</b>	<b>2008</b>
<b>Allied Health:</b>					
Dental Hygiene	35	29	42	35	34
Diagnostic Medical Sonography	9	9	7	8	11
Medical Laboratory Technology	4	12	11	2	1
Medical Office Assistant	2	5	9	20	14
Physical Therapist Assistant*	4	7	13	9	1
Radiography	21	27	32	35	38
Respiratory Therapy	9	21	22	30	39
Vascular Technology*	0	0	4	0	0
<b>Health:</b>					
Health Science	0	2	4	1	4
Veterinary Technology	6	9	5	11	3
<b>Nursing:</b>					
Nursing-Day & Evening	82	102	114	120	103
<b>Business Administration:</b>					
Accounting	21	12	23	23	13
Banking and Finance**	6	6	7	9	7
Legal Nurse Consultant	0	0	0	8	4
Paralegal	6	15	17	14	12
Retail Business Management*	1	0	0	0	0
<b>Business Technologies:</b>					
Hospitality Management	11	11	12	9	15
HRH -Catering/Banquet Management	5	3	6	8	7
Food Service Management	0	1	0	0	0
Information Technology	13	5	7	8	4
Networking Administration	33	28	15	16	24
Office Systems Technology*	4	3	0	0	0
Office Technology	0	3	0	6	3
Travel and Tourism*	6	3	9	4	0
Web Management	7	5	2	2	4
<b>Human Services:</b>					
Corrections	0	0	0	1	1
Early Childhood Education	13	19	17	14	13
Law Enforcement***	56	56	52	64	56
<b>Industrial and Design Technologies:</b>					
Computer Animation	6	6	9	5	13
Graphic Design/Computer Graphics	24	33	24	19	17
Drafting and Design Technology	8	7	14	7	14
Electrical Technology	1	0	2	3	0
Engineering Technology General	1	2	2	2	3
Engineering Technology Manufacturing	0	1	1	1	0
<b>Science Technologies:</b>					
Ornamental Horticulture	8	5	9	7	7
<b>TOTAL A.A.S.</b>	<b>402</b>	<b>447</b>	<b>491</b>	<b>501</b>	<b>465</b>

\* Program has been discontinued.

\*\* Due to a title change, Banking, Credit and Finance is now Banking and Finance.

\*\*\* Due to a title change, Criminal Justice is now Law Enforcement.

Source: SURE Graduate File

**BERGEN COMMUNITY COLLEGE**  
**Certificates Awarded**  
**2004 – 2008**

<b>Programs</b>	<b>2004</b>	<b>2005</b>	<b>2006</b>	<b>2007</b>	<b>2008</b>
Commercial Music Production**	0	0	0	0	1
Computer Aided Drafting Technology	10	3	6	8	2
Computer Animation	1	0	2	0	0
Computer Graphics	2	0	0	2	0
Computer Science	1	1	0	0	3
Computer Technical Support***	5	2	2	1	1
Culinary Arts	12	3	3	2	3
Desktop Publishing	0	0	0	0	0
Exercise Science	3	3	1	5	1
Floral Design	0	1	1	1	1
Grounds Management	0	0	1	0	0
Hospitality Management	2	3	1	0	3
Landscaping	1	2	0	0	0
Manufacturing Design**	0	2	2	4	2
Medical Office Administrative Assistant	1	1	2	4	3
Networking and Web Development	7	1	0	1	2
Office Studies-Word Processing	2	0	0	0	0
Office Technology	0	1	0	1	0
Professional Cook**	1	1	1	1	0
Radiation Therapy Technology	0	0	0	9	10
Small Business Management	0	0	1	3	1
Surgical Technology	30	30	36	34	16
Travel Service	1	1	0	0	6
<b>TOTAL CERTIFICATES</b>	<b>79</b>	<b>55</b>	<b>59</b>	<b>76</b>	<b>55</b>

\* Program has been discontinued.

\*\* Certificate of Achievement.

\*\*\* Due to a title change, Computer Tech./Help Desk Support is now Computer Technical Support.

Source: SURE Graduate File

## HIGHLIGHTS

- ❏ The faculty of Bergen Community College includes 76 Professors, 73 Associate Professors, 93 Assistant Professors, 13 Instructors, 5 Associate Instructors, and 85 Lecturers. A total of 538 Adjunct Instructors completed the faculty roster for Fall 2008.
- ❏ Seventy-five percent (75%) of the total full-time faculty are either tenured or on tenure track, an increase of 6% from Fall 2007. Tenure is unavailable to the remaining 25%, consisting of faculty on temporary appointment (lecturers).
- ❏ The highest degrees held by full-time faculty are as follows: 77 Doctorate (24%), 259 Master's degrees (75%) and 9 Bachelor or other degree (1%).

**BERGEN COMMUNITY COLLEGE**  
**Full-Time Faculty**  
**by Division, Rank and Gender**  
**Fall 2008**

DIVISIONS	Professor		Associate Professor		Assistant Professor		Instructor		Associate Instructor		Lecturer		Total		Faculty Total
	M	F	M	F	M	F	M	F	M	F	M	F	M	F	
<b>Arts, Humanities, and Wellness</b>															
Communication	3	1	3	2	1	3	0	0	0	0	2	3	9	9	18
World Languages & Cultures	0	1	0	1	0	2	0	1	0	0	0	2	0	7	7
Performing Arts	0	1	0	2	2	0	0	0	0	0	1	0	3	3	6
Philosophy & Religion	3	0	0	0	2	1	0	0	0	0	1	1	6	2	8
Visual Arts	0	0	1	0	2	3	0	0	0	0	1	2	4	5	9
Wellness & Exercise Science	5	2	1	1	0	1	0	0	0	0	1	0	7	4	11
<b>DIVISION TOTAL</b>	<b>11</b>	<b>5</b>	<b>5</b>	<b>6</b>	<b>7</b>	<b>10</b>	<b>0</b>	<b>1</b>	<b>0</b>	<b>0</b>	<b>6</b>	<b>8</b>	<b>29</b>	<b>30</b>	<b>59</b>
<b>Business, Social Science, and Public Service</b>															
Business, Accounting, & Finance	1	2	2	0	2	0	0	1	0	0	0	2	5	5	10
History, Education, & Public Service	2	1	3	0	4	1	0	0	0	0	2	2	11	4	15
Hospitality & Restaurant Management	1	0	3	0	0	0	0	0	0	0	0	0	4	0	4
Information Technology	2	1	0	2	2	0	0	0	0	0	0	0	4	3	7
Legal & Related Studies	1	0	0	0	1	0	0	0	0	0	1	0	3	0	3
Social Sciences	6	1	2	1	0	2	0	0	0	0	5	6	13	10	23
<b>DIVISION TOTAL</b>	<b>13</b>	<b>5</b>	<b>10</b>	<b>3</b>	<b>9</b>	<b>3</b>	<b>0</b>	<b>1</b>	<b>0</b>	<b>0</b>	<b>8</b>	<b>10</b>	<b>40</b>	<b>22</b>	<b>62</b>
<b>English</b>															
American Language Program	3	1	1	3	1	6	0	0	0	0	0	1	5	11	16
Composition & Literature	3	3	1	3	1	3	1	3	0	0	4	4	10	16	26
English Basic Skills	2	2	3	3	1	3	1	1	0	0	5	6	12	15	27
<b>DIVISION TOTAL</b>	<b>8</b>	<b>6</b>	<b>5</b>	<b>9</b>	<b>3</b>	<b>12</b>	<b>2</b>	<b>4</b>	<b>0</b>	<b>0</b>	<b>9</b>	<b>11</b>	<b>27</b>	<b>42</b>	<b>69</b>
<b>Health Professions</b>															
Allied Health	0	0	0	0	1	0	0	0	0	0	1	1	2	1	3
Dental Hygiene	0	0	0	1	0	3	0	0	0	0	0	1	0	5	5
Diagnostic Medical Sonography	0	2	0	0	0	0	0	0	0	1	0	0	0	3	3
Medical Office Technology	0	0	0	0	1	0	0	0	0	0	0	0	1	0	1
Nursing	0	2	0	8	0	7	0	0	0	0	0	3	0	20	20
Radiation Therapy	0	0	0	0	0	1	0	0	0	0	0	1	0	2	2
Radiography	0	0	0	1	1	0	0	0	0	0	1	1	2	2	4
Respiratory Therapy	1	0	0	1	0	0	0	0	0	0	1	0	2	1	3
Surgical Technology	0	0	0	0	0	0	0	0	0	1	0	0	0	1	1
Veterinary Technology	0	0	0	0	0	1	0	0	0	2	0	0	0	3	3
<b>DIVISION TOTAL</b>	<b>1</b>	<b>4</b>	<b>0</b>	<b>11</b>	<b>3</b>	<b>12</b>	<b>0</b>	<b>0</b>	<b>0</b>	<b>4</b>	<b>3</b>	<b>7</b>	<b>7</b>	<b>38</b>	<b>45</b>
<b>Math, Science, and Technology</b>															
Biology & Horticulture	5	1	4	1	1	4	0	0	0	0	4	2	14	8	22
Computer Informatics	1	0	0	2	0	0	0	0	0	0	0	0	1	2	3
Developmental Mathematics	1	1	0	0	0	2	0	4	0	0	3	7	4	14	18
Industrial & Design Technology	2	0	0	0	0	0	0	0	1	0	2	0	5	0	5
College Mathematics	1	2	1	1	0	6	0	0	0	0	1	1	3	10	13
Physical Science	1	4	0	0	5	1	0	0	0	0	2	1	8	6	14
<b>DIVISION TOTAL</b>	<b>11</b>	<b>8</b>	<b>5</b>	<b>4</b>	<b>6</b>	<b>13</b>	<b>0</b>	<b>4</b>	<b>1</b>	<b>0</b>	<b>12</b>	<b>11</b>	<b>35</b>	<b>40</b>	<b>75</b>
<b>Total Teaching Faculty</b>	<b>44</b>	<b>28</b>	<b>25</b>	<b>33</b>	<b>28</b>	<b>50</b>	<b>2</b>	<b>10</b>	<b>1</b>	<b>4</b>	<b>38</b>	<b>47</b>	<b>138</b>	<b>172</b>	<b>310</b>
Library & Learning Resources Center	0	0	0	4	0	6	0	0	0	0	0	0	0	10	10
<b>Total Instructional</b>	<b>44</b>	<b>28</b>	<b>25</b>	<b>37</b>	<b>28</b>	<b>56</b>	<b>2</b>	<b>10</b>	<b>1</b>	<b>4</b>	<b>38</b>	<b>47</b>	<b>138</b>	<b>182</b>	<b>320</b>
Student Services	2	2	6	4	2	7	0	1	0	0	0	0	10	14	24
Community and Cultural Affairs	0	0	0	1	0	0	0	0	0	0	0	0	0	1	1
<b>TOTAL</b>	<b>46</b>	<b>30</b>	<b>31</b>	<b>42</b>	<b>30</b>	<b>63</b>	<b>2</b>	<b>11</b>	<b>1</b>	<b>4</b>	<b>38</b>	<b>47</b>	<b>148</b>	<b>197</b>	<b>345</b>

Note: Faculty on released time are included in the division of their primary academic affiliation.

Tenure is not available to lecturers.

Source: IE&R FCLTY2008



**BERGEN COMMUNITY COLLEGE**  
**Full-Time Faculty**  
**by Race/Ethnicity and Gender**  
**Fall 2008**

DIVISIONS	White		Black		Hispanic		Asian		Am. Indian		Unknown		Faculty Total
	M	F	M	F	M	F	M	F	M	F	M	F	
<b>Arts, Humanities, and Wellness</b>													
Communication	10	6	1	1	0	0	0	0	0	0	0	0	18
World Languages & Cultures	0	4	0	0	0	2	0	0	0	1	0	0	7
Performing Arts	3	3	0	0	0	0	0	0	0	0	0	0	6
Philosophy & Religion	5	2	0	0	0	0	0	0	1	0	0	0	8
Visual Arts	4	4	0	0	0	0	0	1	0	0	0	0	9
Wellness & Exercise Science	7	4	0	0	0	0	0	0	0	0	0	0	11
<b>DIVISION TOTAL</b>	<b>29</b>	<b>23</b>	<b>1</b>	<b>1</b>	<b>0</b>	<b>2</b>	<b>0</b>	<b>1</b>	<b>1</b>	<b>1</b>	<b>0</b>	<b>0</b>	<b>59</b>
<b>Business, Social Science, and Public Service</b>													
Business, Accounting, & Finance	3	4	2	0	0	0	0	1	0	0	0	0	10
History, Education, & Public Service	8	2	0	2	1	0	2	0	0	0	0	0	15
Hospitality & Restaurant Management	4	0	0	0	0	0	0	0	0	0	0	0	4
Information Technology	4	3	0	0	0	0	0	0	0	0	0	0	7
Legal & Related Studies	3	0	0	0	0	0	0	0	0	0	0	0	3
Social Sciences	13	5	0	3	0	0	0	2	0	0	0	0	23
<b>DIVISION TOTAL</b>	<b>35</b>	<b>14</b>	<b>2</b>	<b>5</b>	<b>1</b>	<b>0</b>	<b>2</b>	<b>3</b>	<b>0</b>	<b>0</b>	<b>0</b>	<b>0</b>	<b>62</b>
<b>English</b>													
American Language Program	4	6	0	1	0	2	1	1	0	0	0	1	16
Composition & Literature	9	13	0	1	0	0	0	1	0	0	1	1	26
English Basic Skills	9	14	3	0	0	0	0	0	0	0	0	1	27
<b>DIVISION TOTAL</b>	<b>22</b>	<b>33</b>	<b>3</b>	<b>2</b>	<b>0</b>	<b>2</b>	<b>1</b>	<b>2</b>	<b>0</b>	<b>0</b>	<b>1</b>	<b>3</b>	<b>69</b>
<b>Health Professions</b>													
Allied Health	1	1	0	0	0	0	1	0	0	0	0	0	3
Dental Hygiene	0	5	0	0	0	0	0	0	0	0	0	0	5
Medical Office Technology	1	0	0	0	0	0	0	0	0	0	0	0	1
Nursing	0	18	0	0	0	1	0	0	0	0	0	1	20
Radiography	1	2	0	0	0	0	0	0	0	0	1	0	4
Radiation Therapy	0	2	0	0	0	0	0	0	0	0	0	0	2
Respiratory Therapy	2	1	0	0	0	0	0	0	0	0	0	0	3
Diagnostic Medical Sonography	0	3	0	0	0	0	0	0	0	0	0	0	3
Surgical Technology	0	1	0	0	0	0	0	0	0	0	0	0	1
Veterinary Technology	0	3	0	0	0	0	0	0	0	0	0	0	3
<b>DIVISION TOTAL</b>	<b>5</b>	<b>36</b>	<b>0</b>	<b>0</b>	<b>0</b>	<b>1</b>	<b>1</b>	<b>0</b>	<b>0</b>	<b>0</b>	<b>1</b>	<b>1</b>	<b>45</b>
<b>Math, Science, and Technology</b>													
Biology & Horticulture	13	7	0	1	0	0	1	0	0	0	0	0	22
Computer Informatics	0	2	0	0	0	0	1	0	0	0	0	0	3
College Mathematics	3	9	0	0	0	0	0	1	0	0	0	0	13
Developmental Mathematics	4	9	0	1	0	3	0	1	0	0	0	0	18
Industrial & Design Technology	4	0	0	0	0	0	0	0	0	0	1	0	5
Physical Science	7	5	1	0	0	0	0	1	0	0	0	0	14
<b>DIVISION TOTAL</b>	<b>31</b>	<b>32</b>	<b>1</b>	<b>2</b>	<b>0</b>	<b>3</b>	<b>2</b>	<b>3</b>	<b>0</b>	<b>0</b>	<b>1</b>	<b>0</b>	<b>75</b>
<b>Total Teaching Faculty</b>	<b>122</b>	<b>138</b>	<b>7</b>	<b>10</b>	<b>1</b>	<b>8</b>	<b>6</b>	<b>9</b>	<b>1</b>	<b>1</b>	<b>3</b>	<b>4</b>	<b>310</b>
Library & Learning Resources Center	0	9	0	1	0	0	0	0	0	0	0	0	10
<b>Total Instructional</b>	<b>122</b>	<b>147</b>	<b>7</b>	<b>11</b>	<b>1</b>	<b>8</b>	<b>6</b>	<b>9</b>	<b>1</b>	<b>1</b>	<b>3</b>	<b>4</b>	<b>320</b>
Student Services	6	11	2	2	2	0	1	0	0	0	0	0	24
Community and Cultural Affairs	0	1	0	0	0	0	0	0	0	0	0	0	1
<b>TOTAL</b>	<b>128</b>	<b>159</b>	<b>9</b>	<b>13</b>	<b>3</b>	<b>8</b>	<b>7</b>	<b>9</b>	<b>1</b>	<b>1</b>	<b>3</b>	<b>4</b>	<b>345</b>

Note: Table includes faculty on temporary appointment (lecturers).

Faculty on released time are included in the division of their primary academic affiliation.

Source: IE&R FCLTY2008

**BERGEN COMMUNITY COLLEGE**  
**Full-Time Faculty**  
**by Tenure and Division**  
**Fall 2008**

<b>DIVISIONS</b>	<b>Tenured</b>	<b>Non-Tenured</b>	<b>Tenure Not Available*</b>	<b>Faculty Total</b>
<b><u>Arts, Humanities, and Wellness</u></b>				
Communication	10	3	5	18
World Languages & Cultures	2	3	2	7
Performing Arts	3	2	1	6
Philosophy & Religion	4	2	2	8
Visual Arts	4	2	3	9
Wellness & Exercise Science	9	1	1	11
<b>DIVISION TOTAL</b>	<b>32</b>	<b>13</b>	<b>14</b>	<b>59</b>
<b><u>Business, Social Science, and Public Service</u></b>				
Business, Accounting, & Finance	5	3	2	10
History, Education, & Public Service	7	4	4	15
Hospitality & Restaurant Management	4	0	0	4
Information Technology	7	0	0	7
Legal & Related Studies	1	1	1	3
Social Sciences	11	1	11	23
<b>DIVISION TOTAL</b>	<b>35</b>	<b>9</b>	<b>18</b>	<b>62</b>
<b><u>English</u></b>				
American Language Program	15	0	1	16
Composition & Literature	11	7	8	26
English Basic Skills	11	5	11	27
<b>DIVISION TOTAL</b>	<b>37</b>	<b>12</b>	<b>20</b>	<b>69</b>
<b><u>Health Professions</u></b>				
Allied Health	0	1	2	3
Dental Hygiene	1	3	1	5
Medical Office Technology	1	0	0	1
Nursing	10	7	3	20
Radiography	1	0	1	2
Radiation Therapy	2	1	1	4
Respiratory Therapy	2	0	1	3
Diagnostic Medical Sonography	2	1	0	3
Surgical Technology	0	1	0	1
Veterinary Technology	2	1	0	3
<b>DIVISION TOTAL</b>	<b>21</b>	<b>15</b>	<b>9</b>	<b>45</b>
<b><u>Math, Science, and Technology</u></b>				
Biology & Horticulture	14	2	6	22
Computer Informatics	3	0	0	3
College Mathematics	8	2	3	13
Developmental Mathematics	4	4	10	18
Industrial & Design Technology	2	1	2	5
Physical Science	7	4	3	14
<b>DIVISION TOTAL</b>	<b>38</b>	<b>13</b>	<b>24</b>	<b>75</b>
<b>Total Teaching Faculty</b>	<b>163</b>	<b>62</b>	<b>85</b>	<b>310</b>
Library & Learning Resources Center	8	2	0	10
<b>Total Instructional Faculty</b>	<b>171</b>	<b>64</b>	<b>85</b>	<b>320</b>
Student Services	17	7	0	24
Community and Cultural Affairs	1	0	0	1
<b>TOTAL</b>	<b>189</b>	<b>71</b>	<b>85</b>	<b>345</b>

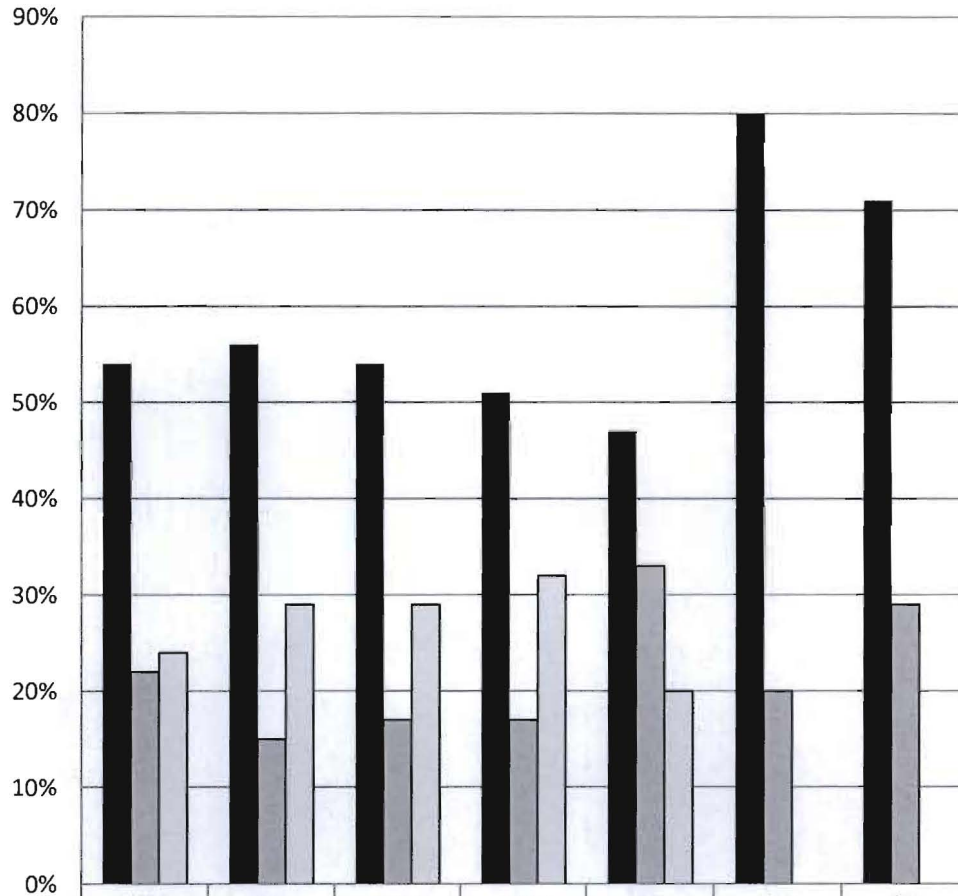
\*Tenure is not available to lecturers.

Note: Table includes faculty on temporary appointment (lecturers).

Faculty on released time are included in the division of their primary academic affiliation.

Source: IE&R FCLTY2008

**BERGEN COMMUNITY COLLEGE**  
**Full-Time Faculty**  
**by Tenure and Division**  
**(represented as percent)**  
**Fall 2008**



	AHW	BSP	ENG	MST	HP	LLC	SS
■ Tenured	54%	56%	54%	51%	47%	80%	71%
■ Non-Tenured	22%	15%	17%	17%	33%	20%	29%
□ Tenure Unavailable	24%	29%	29%	32%	20%	0%	0%

**AHW: Division of Arts, Humanities, & Wellness**  
**BSP: Division of Business, Math, & Social Sciences**  
**ENG: Division of English**  
**MST: Division of Mathematics, Science, & Technology**  
**HP: Division of Health Professions**  
**LLC: Library and Learning Resources Center**  
**SS: Student Services**

**BERGEN COMMUNITY COLLEGE**  
**Full-Time Faculty**  
**Highest Degree by Division and Gender**  
**Fall 2008**

DIVISIONS	Doctorate		Master's		Bachelor's		Other		Total		Faculty Total
	M	F	M	F	M	F	M	F	M	F	
<b>Arts, Humanities, and Wellness</b>											
Communication	2	0	9	7	0	0	0	0	11	7	18
World Languages & Cultures	0	2	0	5	0	0	0	0	0	7	7
Performing Arts	0	2	3	1	0	0	0	0	3	3	6
Philosophy & Religion	3	1	3	1	0	0	0	0	6	2	8
Visual Arts	0	1	4	4	0	0	0	0	4	5	9
Wellness & Exercise Science	0	0	7	4	0	0	0	0	7	4	11
<b>DIVISION TOTAL</b>	<b>5</b>	<b>6</b>	<b>26</b>	<b>22</b>	<b>0</b>	<b>0</b>	<b>0</b>	<b>0</b>	<b>31</b>	<b>28</b>	<b>59</b>
<b>Business, Social Science, and Public Service</b>											
Business, Accounting, & Finance	2	1	3	4	0	0	0	0	5	5	10
History, Education, & Public Service	2	1	9	3	0	0	0	0	11	4	15
Hospitality & Restaurant Management	0	0	4	0	0	0	0	0	4	0	4
Information Technology	1	1	3	2	0	0	0	0	4	3	7
Legal & Related Studies	3	0	0	0	0	0	0	0	3	0	3
Social Sciences	5	5	8	5	0	0	0	0	13	10	23
<b>DIVISION TOTAL</b>	<b>13</b>	<b>8</b>	<b>27</b>	<b>14</b>	<b>0</b>	<b>0</b>	<b>0</b>	<b>0</b>	<b>40</b>	<b>22</b>	<b>62</b>
<b>English</b>											
American Language Program	1	2	4	9	0	0	0	0	5	11	16
Composition & Literature	3	7	7	9	0	0	0	0	10	16	26
English Basic Skills	2	3	10	12	0	0	0	0	12	15	27
<b>DIVISION TOTAL</b>	<b>6</b>	<b>12</b>	<b>21</b>	<b>30</b>	<b>0</b>	<b>0</b>	<b>0</b>	<b>0</b>	<b>27</b>	<b>42</b>	<b>69</b>
<b>Health Professions</b>											
Allied Health	0	0	1	0	1	0	1	0	3	0	3
Dental Hygiene	0	0	0	5	0	0	0	0	0	5	5
Diagnostic Medical Sonography	0	0	0	2	0	0	0	1	0	3	3
Medical Office Technology	0	0	1	0	0	0	0	0	1	0	1
Nursing	1	0	19	0	0	0	0	0	20	0	20
Radiography	0	0	1	1	1	1	0	0	2	2	4
Radiation Therapy	0	0	0	2	0	0	0	0	0	2	2
Respiratory Therapy	0	1	2	0	0	0	0	0	2	1	3
Surgical Technology	0	0	0	0	0	1	0	0	0	1	1
Veterinary Technology	0	1	0	0	0	1	0	1	0	3	3
<b>DIVISION TOTAL</b>	<b>1</b>	<b>2</b>	<b>24</b>	<b>10</b>	<b>2</b>	<b>3</b>	<b>1</b>	<b>2</b>	<b>28</b>	<b>17</b>	<b>45</b>
<b>Math, Science, and Technology</b>											
Biology & Horticulture	7	3	7	5	0	0	0	0	14	8	22
Computer Informatics	1	1	0	1	0	0	0	0	1	2	3
College Mathematics	1	3	2	7	0	0	0	0	3	10	13
Developmental Mathematics	0	0	4	14	0	0	0	0	4	14	18
Industrial & Design Technology	0	0	4	0	0	0	1	0	5	0	5
Physical Science	4	3	4	3	0	0	0	0	8	6	14
<b>DIVISION TOTAL</b>	<b>13</b>	<b>10</b>	<b>21</b>	<b>30</b>	<b>0</b>	<b>0</b>	<b>1</b>	<b>0</b>	<b>35</b>	<b>40</b>	<b>75</b>
<b>Total Teaching Faculty</b>											
	38	38	119	106	2	3	2	2	161	149	310
Library & Learning Resources Center	0	0	0	10	0	0	0	0	0	10	10
<b>Total Instructional Faculty</b>	<b>38</b>	<b>38</b>	<b>119</b>	<b>116</b>	<b>2</b>	<b>3</b>	<b>2</b>	<b>2</b>	<b>161</b>	<b>159</b>	<b>320</b>
Student Services	1	0	9	14	0	0	0	0	10	14	24
Community and Cultural Affairs	0	0	0	1	0	0	0	0	0	1	1
<b>TOTAL</b>	<b>39</b>	<b>38</b>	<b>128</b>	<b>131</b>	<b>2</b>	<b>3</b>	<b>2</b>	<b>2</b>	<b>171</b>	<b>174</b>	<b>345</b>

Note: Table includes faculty on temporary appointment (lecturers).

Faculty on released time are included in the division of their primary academic affiliation.

Source: IE&R FCLTY2008

**BERGEN COMMUNITY COLLEGE**  
**Adjunct Faculty**  
**Gender and Race/Ethnicity**  
**Fall 2008**

**Adjunct Faculty: Gender and Race/Ethnicity**

<b>Race</b>	<b>Male</b>	<b>Female</b>	<b>Total</b>
Black	9	10	19
Asian	11	23	34
Hispanic	12	23	35
White	216	211	427
Unknown	13	10	23
<b>TOTAL</b>	<b>261</b>	<b>277</b>	<b>538</b>

**Adjunct Faculty: Highest Degree Earned**

<b>Degree</b>	<b>Male</b>	<b>Female</b>	<b>Total</b>
Doctorate	54	26	80
Master's	168	167	335
Bachelor's	25	40	65
Associate	12	29	41
Unknown	2	15	17
<b>TOTAL</b>	<b>261</b>	<b>277</b>	<b>538</b>

Source: BCCDHR

## HIGHLIGHTS

For the 2009 Fiscal Year the College's budget revenue sources were:

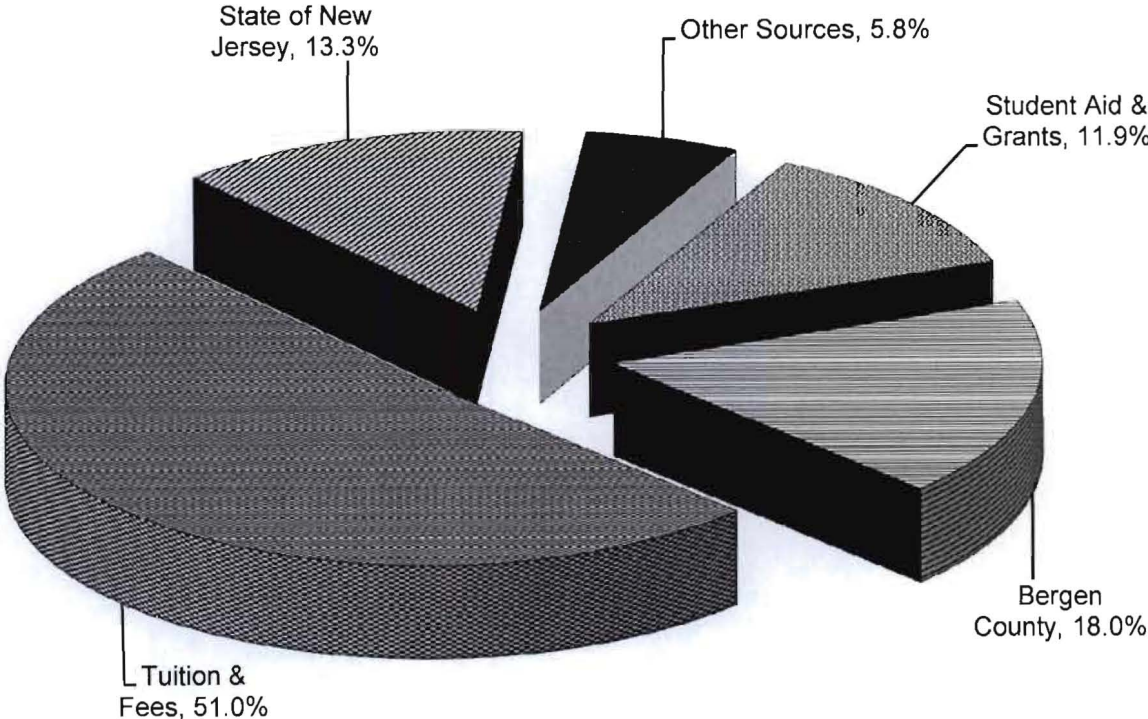
- ❑ State of New Jersey 13.9%
- ❑ Bergen County 18.0%
- ❑ Tuition and Fees 50.9%
- ❑ Student Aid and Grants 11.9%
- ❑ Other 5.8%

**BERGEN COMMUNITY COLLEGE**  
**Current Funds Budget, Revenues**  
**Fiscal Years 2008 and 2009**

<b>REVENUES</b>	<b>Budgeted 7/1/07-6/30/08</b>	<b>Percent of Total</b>	<b>Budgeted 7/1/08-6/30/09</b>	<b>Percent of Total</b>
Unrestricted:				
Tuition	37,788,250	39.9%	40,068,490	39.8%
Student Fees	9,975,410	10.5%	11,172,190	11.1%
Government Appropriations:				
State	14,513,340	15.4%	13,308,420	13.2%
County	17,494,830	18.5%	18,107,150	18.0%
Other New Jersey Counties	115,000	0.1%	115,000	0.1%
Sales & Services, Auxiliary Enterprise	220,000	0.2%	220,000	0.2%
Other Sources	1,503,700	1.6%	2,097,790	2.1%
Fund Balance Appropriation	1,800,000	1.9%	3,478,710	3.5%
<b>TOTAL UNRESTRICTED</b>	<b>83,410,530</b>	<b>88.0%</b>	<b>88,567,750</b>	<b>88.1%</b>
Restricted:				
Student Aid and Other Grants	11,330,000	12.0%	12,000,000	11.9%
<b>TOTAL CURRENT FUNDS REVENUES</b>	<b>94,740,530</b>	<b>100.0%</b>	<b>100,567,750</b>	<b>100.0%</b>

Source: Bergen Community College Office of Budget and Finance

**BERGEN COMMUNITY COLLEGE  
Current Funds Budget, Revenues  
Fiscal Year 2009**



Source: Bergen Community College Office of Budget and Finance

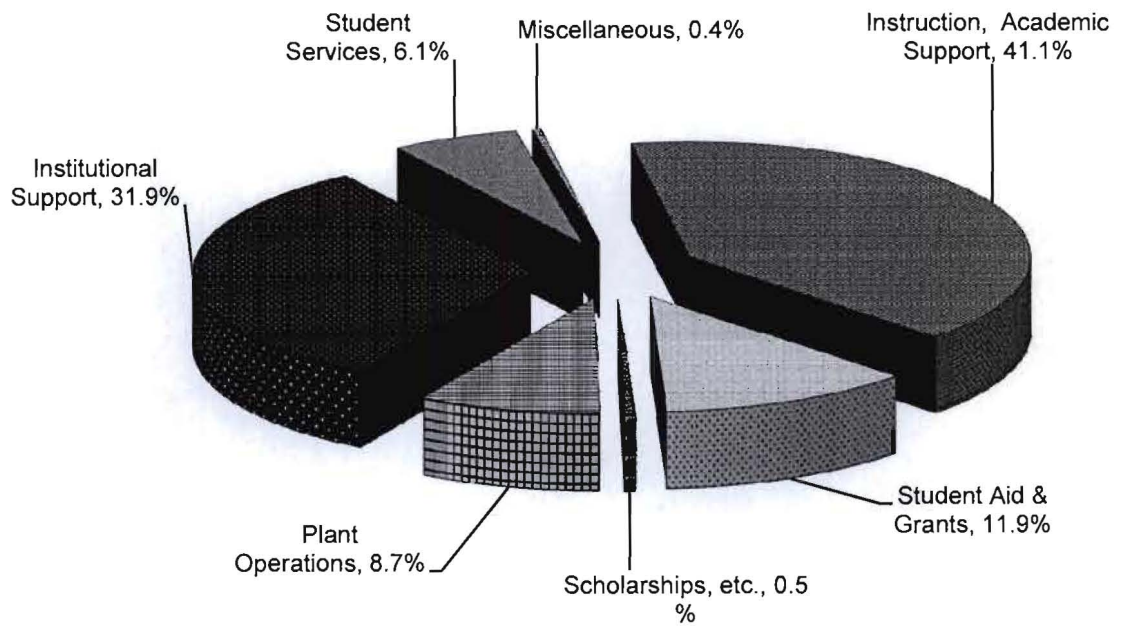


**BERGEN COMMUNITY COLLEGE**  
**Current Funds Budget, Expenditures**  
**Fiscal Years 2008 and 2009**

<b>EXPENDITURES &amp; TRANSFERS</b>	<b>Budgeted 7/1/06-6/30/07</b>	<b>Percent of Total</b>	<b>Budgeted 7/1/07-6/30/08</b>	<b>Percent of Total</b>
Educational and General:				
Instruction	31,927,260	35.6%	33,690,480	35.6%
Academic Support	4,895,270	5.5%	5,171,300	5.5%
Student Services	5,626,440	6.3%	5,949,100	6.3%
Institutional Support	28,724,730	31.9%	29,436,880	31.1%
Operation & Maintenance of Plant	7,487,940	8.3%	8,291,330	8.8%
Scholarships and Fellowships	463,000	0.5%	530,000	0.6%
<b>EDUC. &amp; GENERAL EXPENDITURE</b>	<b>79,124,640</b>	<b>88.1%</b>	<b>83,069,090</b>	<b>87.7%</b>
Mandatory Transfers:				
Principal & Interest	77,500	0.1%	77,500	0.1%
<b>TOTAL EDUCATIONAL &amp; GENERAL</b>	<b>79,202,140</b>	<b>88.2%</b>	<b>83,146,590</b>	<b>87.8%</b>
Auxiliary Enterprise:				
Expenditures	254,010	0.3%	263,940	0.3%
<b>TOTAL CURRENT UNRESTRICTED</b>	<b>79,456,150</b>	<b>88.5%</b>	<b>83,410,530</b>	<b>88.1%</b>
Restricted Expenditures:				
Student Aid and Other grants	10,330,000	11.5%	11,330,000	11.9%
<b>TOTAL CURRENT FUNDS EXPENDITURES &amp; TRANSFERS</b>	<b>89,786,150</b>	<b>100.0%</b>	<b>94,740,530</b>	<b>100.0%</b>

Source: Bergen Community College Office of Budget and Finance

**BERGEN COMMUNITY COLLEGE**  
**Current Funds Budget, Expenditures**  
**Fiscal Year 2009**



Source: Bergen Community College Office of Budget and Finance

**BERGEN COMMUNITY COLLEGE**  
**Student Financial Aid**  
**Recipients and Amount of Award**  
**Fiscal Year 2008**

	Full-Time Students		Part-Time Students		Total Students**	
	Number*	Amount(\$)**	Number*	Amount(\$)**	Number**	Amount(\$)**
<b>Federal Programs</b>						
Pell Grant	2,643	7,841,152	820	1,274,186	3,463	9,115,338
College Work Study	217	353,314	28	32,687	245	386,001
SEOG	1,900	323,036	552	58,250	2,452	381,286
Stafford Loans-Subsidized	637	1,666,226	234	572,857	871	2,239,083
Stafford Loans-Unsubsidized	444	1,242,827	233	598,277	677	1,841,104
PLUS Loans	44	219,575	4	16,500	48	236,075
<b>State Programs</b>						
Tuition Aid Grant (TAG)^	1,904	3,181,482	648	404,217	2,552	3,585,699
Educational Opportunity Fund	370	315,000	42	15,113	412	330,113
Distinguished Scholars	5	3,720	0	0	5	3,720
Urban Scholars	10	8,370	0	0	10	8,370
Garden State Scholars	0	0	0	0	0	0
New Jersey Class Loans	39	188,945	0	0	39	188,945
New Jersey STARS	131	404,369	0	0	131	404,369

\* Not an unduplicated count. Many students request and receive more than one kind of financial aid.

\*\* Totals include Non-County Residents.

\*\*\* Amounts over \$5,000 rounded to nearest thousand.

^ Part-time TAG amount includes funds available to part-time EOF students as well as to other part-time students.

Source: IPEDS Student Financial Aid Report, BCC Office of Financial Aid