




2009-2010 Fact Book



Bergen Community College Fact Book

2009-2010

 **Bergen** | Center for Institutional
COMMUNITY COLLEGE Effectiveness
Pitken Education Center – A-335
400 Paramus Road
Paramus, New Jersey 07652

FOREWORD

The 2009-2010 Edition of the Bergen Community College Fact Book presents data relating to enrollment, graduates, faculty and other personnel, college finances, and demographics. The Fact Book has several purposes: to provide data which may assist the administration in planning and decision making; to give the college community an overview of the student, personnel and financial profiles of the college; and to serve as a reference document which answers many of the most often-asked questions about the college.

Selected tables and graphs may be found on the Center for Institutional Effectiveness website, which can be accessed from the '**Centers**' link, available from the '**About Bergen**' page of the College's website: www.bergen.edu. For further details, or for data not presented here, please contact the Center for Institutional Effectiveness at the number below. Comments and suggestions for future editions of the Fact Book are welcome.

Center for Institutional Effectiveness

(201) 612-5564

<http://www.bergen.edu/pages/3535.asp>

Associate Director
Tonia McKoy

Research Assistant
Jack Latona

Technology Coordinator
Vannette John

TABLE OF CONTENTS

A. GENERAL INFORMATION	
About Bergen	1
Mission and Vision Statements.....	2
Board of Trustees, 2009-2010	3
Administrative Organization Chart.....	4
Administration	5
Programs by Degree.....	6
Accreditation	7
B. STUDENT CHARACTERISTICS	
Highlights	8
Enrollment by Race/Ethnicity, Fall 2005 - Fall 2009.....	9
Enrollment by Age, Gender and Status, Fall 2009	10
Enrollment by County of Residence, Fall 2009.....	11
Bergen County Student Residency Map, Fall 2009.....	12
Enrollment by Country of Citizenship, Fall 2007 - Fall 2009.....	13
Enrollment by Status, Fall 1968 - Fall 2009.....	14
Graph, Enrollment by Status, Fall 2005 - Fall 2009.....	15
Enrollment by Day/Evening, Fall 2005 - Fall 2009	16
Distance Learning Enrollment, Fall 2005 - Fall 2009.....	17
C. PROGRAM DATA	
Highlights	18
Student Population by Degree Program, Fall 1974- Fall 2009.....	19
Graph, Student Population by Degree Program, Fall 2005 - Fall 2009.....	20
Student Population by Degree Program and Registration Status, Fall 2009	21
Associate in Arts, Number of Declared Majors, Fall 2005- Fall 2009.....	22
Associate in Science, Number of Declared Majors, Fall 2005 - Fall 2009	23
Associate in Applied Science, Number of Declared Majors, Fall 2005 - Fall 2009	24
Certificate Programs, Number of Declared Majors, Fall 2005 - Fall 2009.....	25
Transfer Programs, Five Year Change.....	26
Career Programs, Five Year Change	27
D. NUMBER OF CREDITS	
Highlights	28
Number of Credits by Student Status, Fall 2009	29
Number of Credits by Degree Program, Fall 2009	30
Distance Education Credits, Fall 2009.....	31
E. NON-CREDIT ENROLLMENT	
Highlights	32
Continuing Education Enrollment, Fiscal Year 2009	33
Ciarco Learning Center Enrollment, Fiscal Year 2009	34
Institute for Learning in Retirement Enrollment, Fiscal Year 2009.....	35
F. DEGREES AWARDED	
Highlights	36
Degrees and Certificates Awarded, 1999 - 2009.....	37
Associate in Arts, Degrees Awarded, 2005 - 2009.....	38
Associate in Science, Degrees Awarded, 2005 - 2009	39
Associate in Applied Science, Degrees Awarded, 2005 - 2009	40
Certificates Awarded 2005 - 2009	41

G. FACULTY CHARACTERISTICS

Highlights	42
Full-Time Faculty by Division, Rank and Gender, Fall 2009	43
Full-Time Faculty by Race/Ethnicity and Gender, Fall 2009	44
Full-Time Faculty by Tenure and Division, Fall 2009	45
Graph, Full-time Faculty by Tenure and Division, Fall 2009.....	46
Full-Time Faculty Highest Degree by Division and Gender, Fall 2009.....	47
Adjunct Faculty Gender and Race/Ethnicity, Fall 2009	48

H. FINANCIAL DATA

Highlights	49
Current Funds Budget, Revenues, Fiscal Years 2008 and 2009	50
Graph, Current Funds Budget, Revenues, Fiscal Year 2009	51
Current Funds Budget, Expenditures, Fiscal Years 2008 and 2009	52
Graph, Current Funds Budget, Expenditures, Fiscal Year 2009	53
Student Financial Aid, Recipients and Amount of Award, Fiscal Year 2009	54

General Information

About Bergen



Bergen Community College was established by the County Board of Chosen Freeholders in 1965 to satisfy the region's need for a convenient, affordable and comprehensive higher education destination. Dr. Sidney Silverman was named the first President in 1967 and the first classes were offered in September of 1968 on a 167 acre campus in Paramus. Construction of the 430,000 square foot Mega structure was completed in 1973.

Modifications to the Megastructure have included the additions to the Sidney Silverman Library, the Anna Maria Ciccone Theater, modifications of the C-Wing including a resource room, classrooms and computer labs, and most recently, an expansion and renovation of classrooms and laboratory space in the science wing was completed. Construction on a renovation and expansion of the existing Student Center began in Fall 2009.

Other expansions to the College over the past few years include the Technology Education Center, opened in 2002, which houses a simulated manufacturing laboratory, computer labs, interactive television and video conference classrooms, a state-of-the-art Meeting and Training Center, electronic library, and two-domed observatory; West Hall, opened in 2007, which houses Bergen's Educational Broadcast Center, Media Technologies Department, smart classrooms, computer graphics and animation laboratories, exhibition rooms, art studios, rehearsal rooms, music recording facilities and a recital hall; and Bergen Community College at the Meadowlands, an instructional site which began offering non-credit and credit classes in 2008, housed in Lyndhurst, NJ.

BERGEN COMMUNITY COLLEGE
Mission and Vision Statements

Vision

As a college of choice, Bergen Community College provides a comfort level that enables students of all abilities to mature as learners and engaged citizens. A leading community college in the nation, the college creates a stimulating, rigorous, and inclusive learning environment. Use of innovative technology enhances learning experiences and widens access to learning media. Community and business leaders value the college as a reliable partner and principal provider of work force development. Bergen county residents of all ages and cultural backgrounds appreciate the college as a hub of their educational and cultural activities.

Mission

Bergen Community College educates a diverse student population in a supportive and challenging academic environment that fosters civility and respect. The College offers a comprehensive set of accessible, affordable, and high-quality credit and non-credit courses as well as degree and non-degree programs. Bergen provides life-long learning opportunities for all members of the community. The College responds to community needs through work force training and continuing education, and by developing programs for employers.

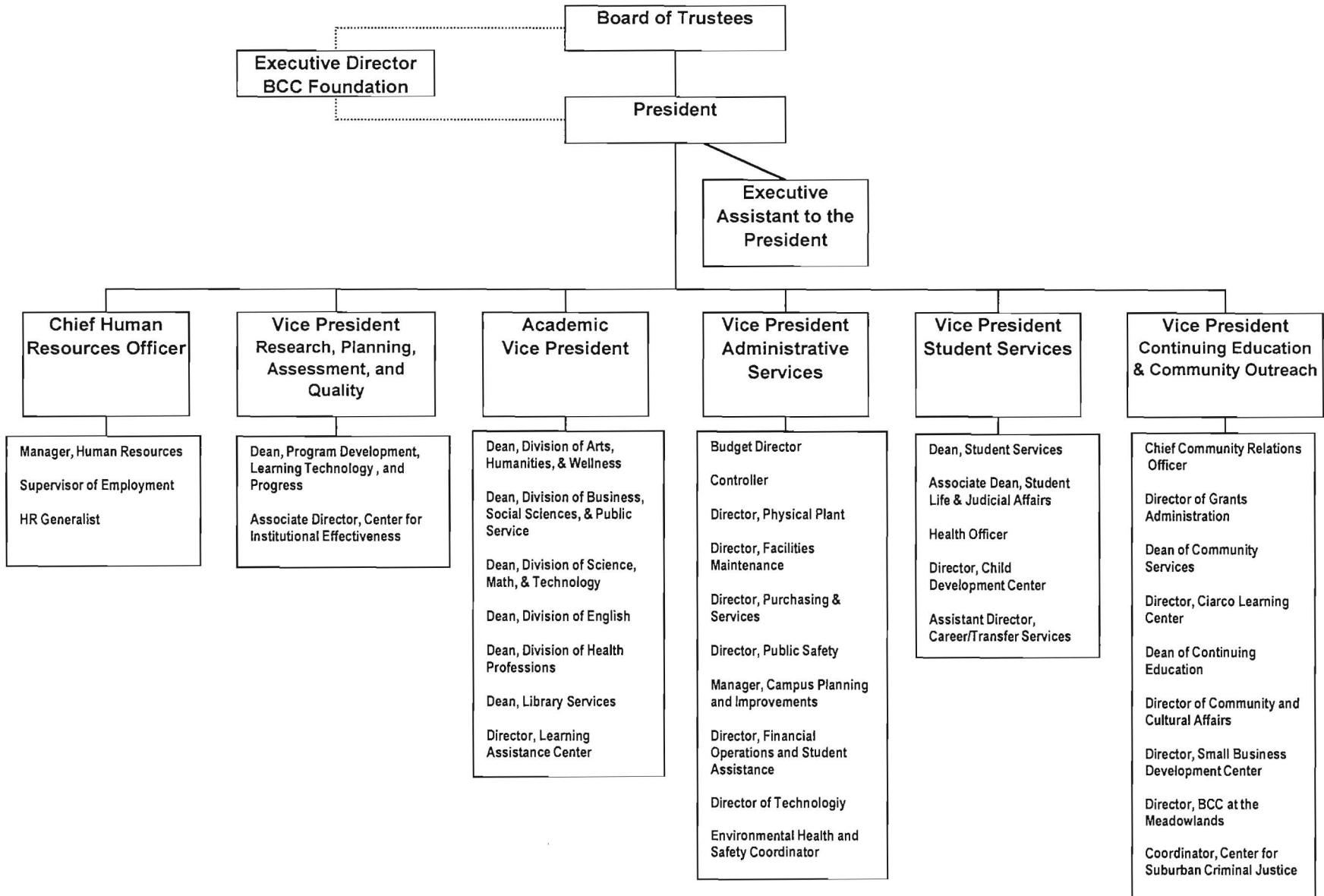
BERGEN COMMUNITY COLLEGE
Board of Trustees
2009-2010

E. Carter Corrison, *Chairman*
Cid D. Wilson, *Vice Chairman*
Dorothy L. Blakeslee, *Treasurer*
Carol Falleni Otis, *Secretary*

Malcolm J. Curtis
Richard Dressel
Dr. Aaron R. Graham
David J. Kasparian
Michael J. Neglia
Germaine M. Ortiz
Philip J. Ciarco III

Ron Subramaniam, *Alumni Representative*

BERGEN COMMUNITY COLLEGE
Administrative Organization Chart
FY 2009-2010



BERGEN COMMUNITY COLLEGE
Executive Council
Fall 2009

President	Dr. G. Jeremiah Ryan	447-7237
Executive Assistant to the President	Raymond Welch	612-5331
Chief Human Resources Officer	James R. Miller	447-7442
Vice President, Interim Administrative Services	Dennis C. Miller	447-9247
Vice President Academic Affairs	Dr. Gary F. Porter	612-5351
Vice President Continuing Education & Community Outreach	Susan A. Johnson	447-5363
Vice President Research, Planning, Assessment, and Quality	Dr. Peter Dlugos	493-3619
Vice President Student Services	Raymond Smith	447-7869

BERGEN COMMUNITY COLLEGE

Programs by Degree, 2009-2010

TRANSFER PROGRAMS

Associate in Arts

Liberal Arts:

General Curriculum
Cinema Studies
Communication
Economics
History
Literature
Philosophy
Political Science
Psychology
Religion
Social Sciences
Sociology
Women's Studies
World Languages and Cultures

Fine and Performing Arts:

Art
Music Arts
 General
 Computer-Based Recording
 Electronic Music
 Music Business
Theatre Arts
 General
 Acting
 Dance
 Technical Production

Associate in Science Degrees

Natural Sciences or Mathematics:

General Curriculum
Biology
Biotechnology
Chemistry
Computer Science
Mathematics
Physics

Professional Studies:

General Curriculum
Broadcasting
Business Administration
Business Administration:
 Accounting
 International Trade Management
 Marketing
 Non-Profit Management
Criminal Justice
Education
Exercise Science
Information Technology
Journalism
Social Work

CAREER PROGRAMS

Associate in Applied Sciences

Art:

Computer Animation
Graphic Design/Computer Graphics

Business Administration:

Accounting
Banking, Credit & Finance
Paralegal Studies

Business Technologies:

Hotel/Restaurant/Hospitality
 Catering/Banquet Management
 Hospitality Management
Information Technology
Networking Administration
Office Technology
Web Development and Management

Health Professions:

Dental Hygiene
Diagnostic Medical Sonography
Health Science
Medical Informatics
Medical Office Assistant
Radiography
Respiratory Therapy
Veterinary Technology

Human Services:

Career Ladder
 Education/Child Development
Correctional Studies
Early Childhood Education
Law Enforcement Studies

Industrial and Design

Technologies:

Drafting & Design Technology
Electronics Technology
General Engineering Technology
Manufacturing Technology

Nursing:

Day and Evening Sequences
LDN/AND Career Mobility Track

Science Technology:

Environmental Technology
Horticulture
Landscape Design/Building
Science Laboratory Technology

ONE YEAR CERTIFICATE PROGRAMS

Computer Aided Drafting (CAD)
Computer Animation
Computer Graphics

Computer Science
Computer Technical Support
Culinary Arts
Culinary Science
Database Programming and Administration
E-Commerce: Business Emphasis
Environmental Technology
Exercise Science
Event Planning & Management
Floral Design
Grounds Management
Hospitality Management
Landscaping
Legal Nurse Consultant
Medical Office Administrative Assistant
Music Business
Music Technology
Music Theatre
Office Technology
Piano Instruction/Pedagogy
Radiation Therapy Technology
Small Business Management
Surgical Technology
Transfer Studies: Liberal Arts
Transfer Studies: Science, Technology, and Professional Studies
U.S. Studies
Vascular Technology

CERTIFICATE OF ACHIEVEMENT PROGRAMS

Biotechnology
Business Paraprofessional Management
Career Ladder:
 Education/Child Development
Commercial Music Production
Environmental Technology
Geographic Information Systems (GIS)
Homeland Security & Emergency Management
Machine Tooling
Manufacturing Design
Professional Cooking
Quality Assurance
Real Estate
Retailing
Special Imaging for Radiologic Technologists
Sports Management

BERGEN COMMUNITY COLLEGE Accreditation

COLLEGE

Commission on Higher Education of the Middle States Association of Colleges and Schools

PROGRAMS

Nursing

National League for Nursing Accrediting Commission, Inc

Dental Hygiene

Commission on Dental Accreditation of the American Dental Association

Diagnostic Medical Sonography

Joint Review Committee on Education in Diagnostic Medical Sonography

Radiography

Joint Review Committee on Education in Radiologic Technology

Respiratory Therapy

Commission on Accreditation for Respiratory Care

Medical Office Assistant

Commission on Accreditation of Allied Health Education Programs

Surgical Technology

Commission on Accreditation of Allied Health Education Programs

Radiation Therapy

Joint Review Committee on Education in Radiologic Technology

Veterinary Technology

American Veterinary Medical Association

In addition, the Legal Assistant Program and Legal Nurse Consultant Program have been granted approval by the American Bar Association. The Nursing Program has been approved by the New Jersey State Board of Nursing.

*Student
Characteristics*

HIGHLIGHTS

- Tenth-day student enrollment at Bergen Community College increased from 15,283 in Fall 2008 to 16,469 in Fall 2009, a new high for the College. This change represents an overall increase of 7.8% in enrollment between the two semesters.

- Continuing a recent trend, the number of full-time students exceeded the number of part-time students in the Fall 2009 semester. The percentage of full-time students increased in five years from 50.7% Fall 2004 to 56.5% in Fall 2009.

- The racial/ethnic characteristics of the student body remained relatively consistent from Fall 2008 to Fall 2009. The percentage of Hispanic students continued a small percentage growth from 30.2% of the student body in Fall 2008, to 31.5% of the student body in Fall 2009.

- In Fall 2009, a total of 8,013 (49%) students were male and 8,456 (51%) were female. This ratio has also remained consistent over the last several years.

- The overall age of BCC students remained static Fall 2008 to Fall 2009. As in the previous fall, seventy-one percent (71%) of the student population was under the age of 25.

- Enrollment in distance learning courses (online and hybrid) continued an upward trend. Over 22% of students were enrolled in a distance education course in Fall 2009.

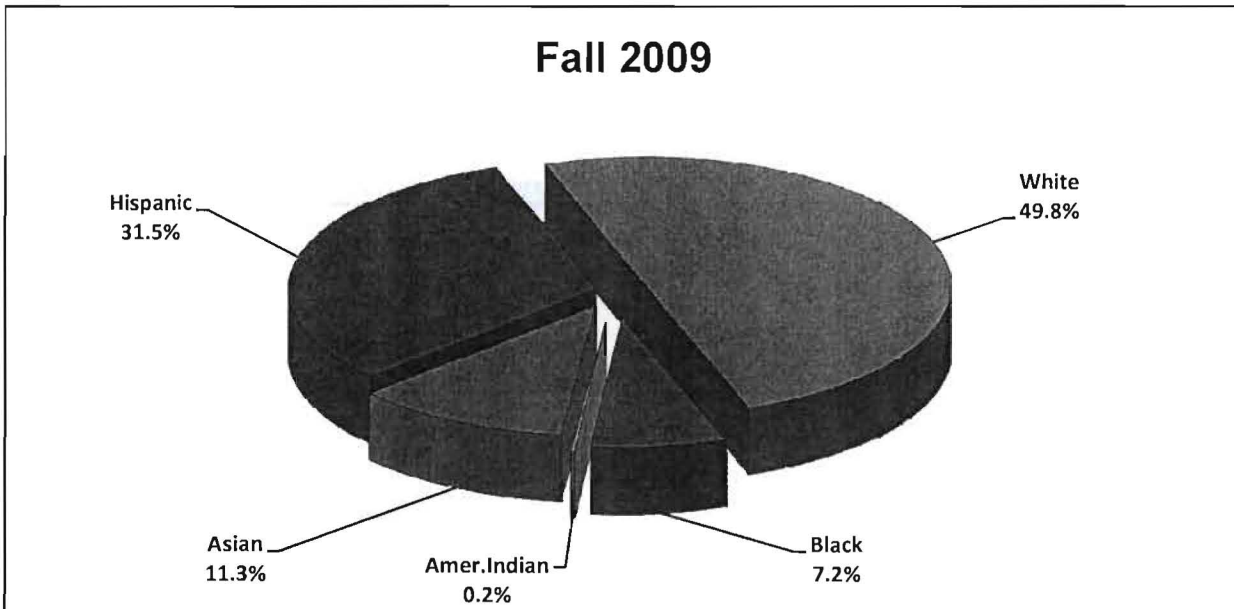
BERGEN COMMUNITY COLLEGE
Enrollment by Race/Ethnicity
Fall 2005 – Fall 2009

Racial/Ethnic Group	2005		2006		2007		2008		2009	
	Number	%**	Number	%**	Number	%**	Number	%**	Number	%**
Black	968	7.7%	894	7.1%	1032	7.3%	902	6.9%	999	7.2%
American Indian	26	0.2%	35	0.3%	34	0.2%	30	0.2%	31	0.2%
Asian	1,623	12.9%	1,602	12.8%	2,119	15.0%	1,592	12.1%	1,572	11.3%
Hispanic	3,439	27.4%	3,339	26.6%	3,916	27.8%	3,958	30.2%	4,378	31.5%
White	6,888	54.9%	6,680	53.2%	6,986	49.6%	6,630	50.6%	6,928	49.8%
Total Known	12,944		12,550		14,087		13,112		13,908	
Non-Resident Alien*	1,044		1,266		1,234		1,190		1,290	
Unknown*	774		792		970		981		1,271	
TOTAL	14,762		14,608		15,057		15,283		16,469	

* These categories include individuals of diverse ethnic and racial backgrounds.

** Percent of students with known racial/ethnic identity.

Source: SURE Enrollment File



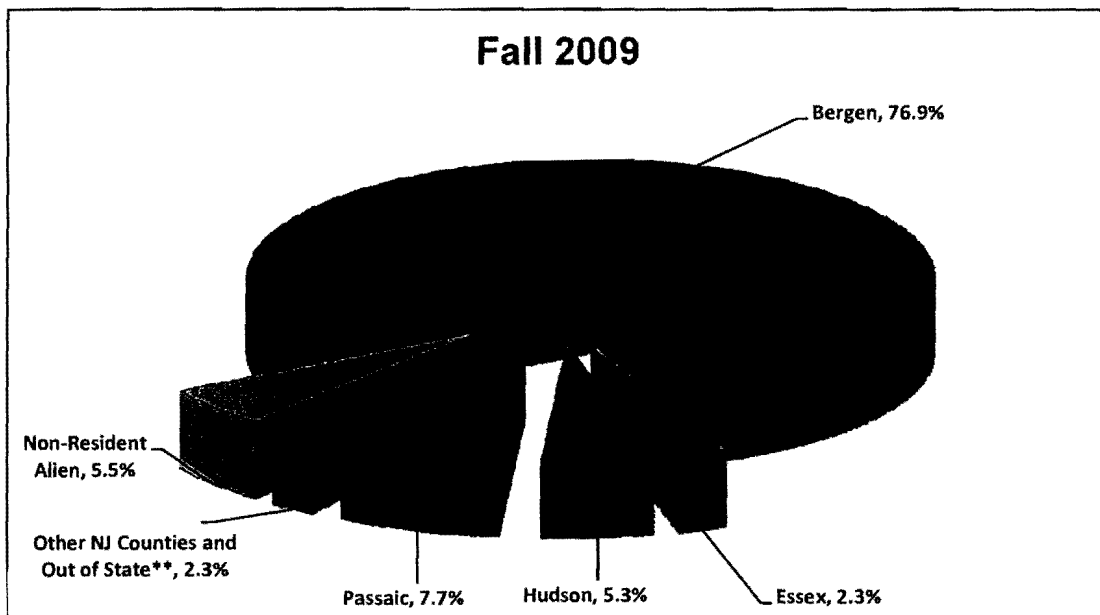
BERGEN COMMUNITY COLLEGE
Enrollment by Age, Gender and Status
Fall 2009

Age Ranges:	Full-Time		Part-Time		Total		All Students	
	Male	Female	Male	Female	Male	Female	Total	% of Total
Under 21 yrs.	3,180	2,705	1,007	797	4,187	3,502	7,689	46.7%
21 - 24 yrs.	1,099	932	1,013	1,014	2,112	1,946	4,058	24.6%
25 - 34 yrs.	458	496	752	1,157	1,210	1,653	2,863	17.4%
35 yrs and older	116	314	385	1,036	501	1,350	1,851	11.2%
Unknown	2	1	1	4	3	5	8	0.0%
Total	4,855	4,448	3,158	4,008	8,013	8,456	16,469	100.0%
Median Age (Years)	20.0yrs	22.3yrs	22.0yrs	25.9yrs	20.0 yrs	22.0yrs	21.0yrs	
Mean Age (Years)	20.0yrs	20.0yrs	25.6yrs	29.8 yrs	22.8yrs	25.6yrs	24.2yrs	

Source: SURE Enrollment File

**BERGEN COMMUNITY COLLEGE
Enrollment by County of Residence*
Fall 2009**

County of Residence	Full-Time	Part-Time	Total
Bergen	6,872	5,786	12,658
Essex	227	160	387
Hudson	533	346	879
Passaic	804	470	1,274
Other NJ Counties and Out of State**	160	211	371
Non-Resident Alien	707	193	900
Total	9,303	7,166	16,469



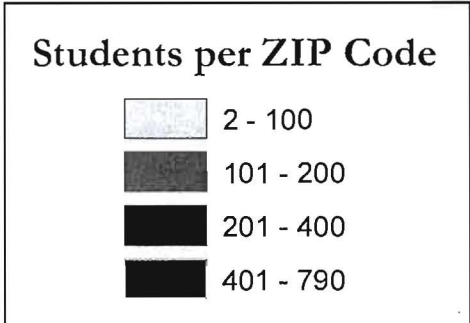
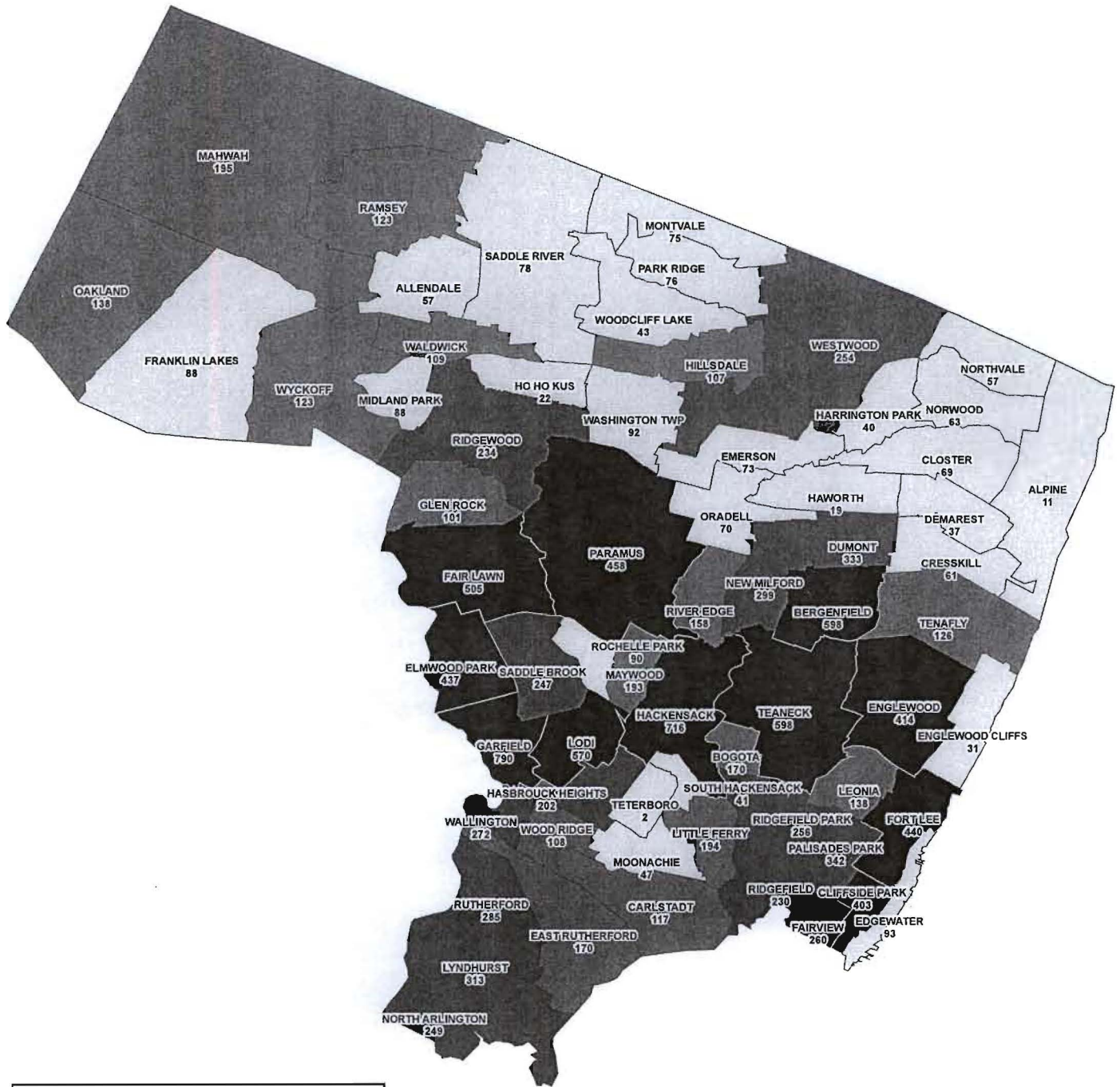
* Residence is defined as legal residence.

** Includes cases where County of Residence is unknown.

Note: Percents may not total 100 due to rounding.

Source: SURE Enrollment File

BERGEN COMMUNITY COLLEGE
Credit Student Residency
Fall 2009
Bergen County Residents*
by ZIP Code



BERGEN COMMUNITY COLLEGE
Enrollment by Country of Citizenship*
Fall 2007 – Fall 2009

COUNTRIES	2007	2008	2009	COUNTRIES	2007	2008	2009
United States	10,759	11,261	12,424	Germany	23	15	18
Mexico	36	31	48	Italy	15	11	10
Canada	16	12	11	United Kingdom	21	9	9
North America:	10,811	11,304	12,483	Spain	7	6	6
Dominican Republic	164	155	169	Portugal	8	5	7
Jamaica	97	85	87	<i>Other: Western Europe</i>	21	14	21
Cuba	39	29	29	Western Europe:	95	60	71
Trinidad and Tobago	31	21	23	Poland	468	430	363
Haiti	10	6	8	Albania	73	85	98
West Indies/Caribbean:	341	296	316	Russia	63	68	58
El Salvador	37	26	33	Ukraine	70	55	52
Honduras	12	18	18	Bulgaria	19	20	15
Costa Rica	14	16	17	Macedonia	43	35	37
Guatemala	13	16	19	Yugoslavia / Indep. States*	12	24	25
Central America:	76	76	87	Slovakia	14	9	11
Colombia	380	406	377	Hungary	6	9	11
Peru	228	227	214	Romania	8	7	7
Ecuador	189	157	152	Czech Republic	6	6	6
Brazil	72	89	90	Fmr. USSR / CIS States	52	51	42
Venezuela	33	28	29	<i>Other: Eastern Europe</i>	48	19	7
Argentina	24	27	21	Eastern Europe:	882	818	732
Chile	20	19	21	TOTAL: Europe	977	878	803
Guyana	16	16	15	Turkey	112	101	117
Bolivia	16	12	11	Israel	20	28	27
South America:	978	981	930	Syria	30	19	24
<i>Other: The Americas</i>	37	28	32	Iran	23	14	17
TOTAL: The Americas	12,243	12,685	13,848	Afghanistan	15	19	16
Egypt	36	44	55	Armenia	14	14	13
Ghana	33	28	24	Jordan	13	13	18
Nigeria	22	16	11	Lebanon	20	7	10
South Africa	15	14	9	<i>Other: Middle East</i>	30	23	29
Kenya	12	12	10	Middle East:	277	238	271
<i>Other</i>	39	49	53	Korea-Republic of	613	623	699
TOTAL: Africa	157	163	162	Philippines	195	183	158
Australia	2	2	2	China	67	47	62
South Pacific Islands	1	2	1	Japan	42	36	28
TOTAL: South Pacific	3	4	3	Thailand	12	12	13
India	231	213	206	Taiwan	13	10	11
Pakistan	35	42	48	<i>Other: Pacific Rim</i>	8	19	20
<i>Other: South Asia</i>	28	15	18	Pacific Rim:	950	930	991
South Asia:	294	270	272	India	231	213	206
TOTAL: Asia	1,521	1,438	1,534	Pakistan	35	42	48
<i>Country Unknown</i>	156	115	119	<i>Other: South Asia</i>	28	15	18
GRAND TOTAL	15,057	15,283	16,469	South Asia:	294	270	272

* Countries of citizenship are self-reported.

Source: SURE Enrollment File

BERGEN COMMUNITY COLLEGE
Enrollment by Status
Fall 1968 – Fall 2009

STATUS	1968	1969	1970	1971	1972	1973	1974	1975	1976
Full-Time	729	1,283	1,327	1,578	2,695	3,416	3,655	3,931	4,148
Part-Time	725	2,112	2,695	2,892	3,468	3,838	4,636	5,330	5,595
TOTAL	1,454	3,395	4,022	4,470	6,163	7,254	8,291	9,261	9,743

STATUS	1977	1978	1979	1980	1981	1982	1983	1984	1985
Full-Time	3,928	3,676	4,221	4,339	4,191	4,254	4,202	3,930	3,804
Part-Time	6,076	6,592	6,438	7,194	7,241	7,635	7,843	7,317	7,204
TOTAL	10,004	10,268	10,659	11,533	11,432	11,889	12,045	11,247	11,008

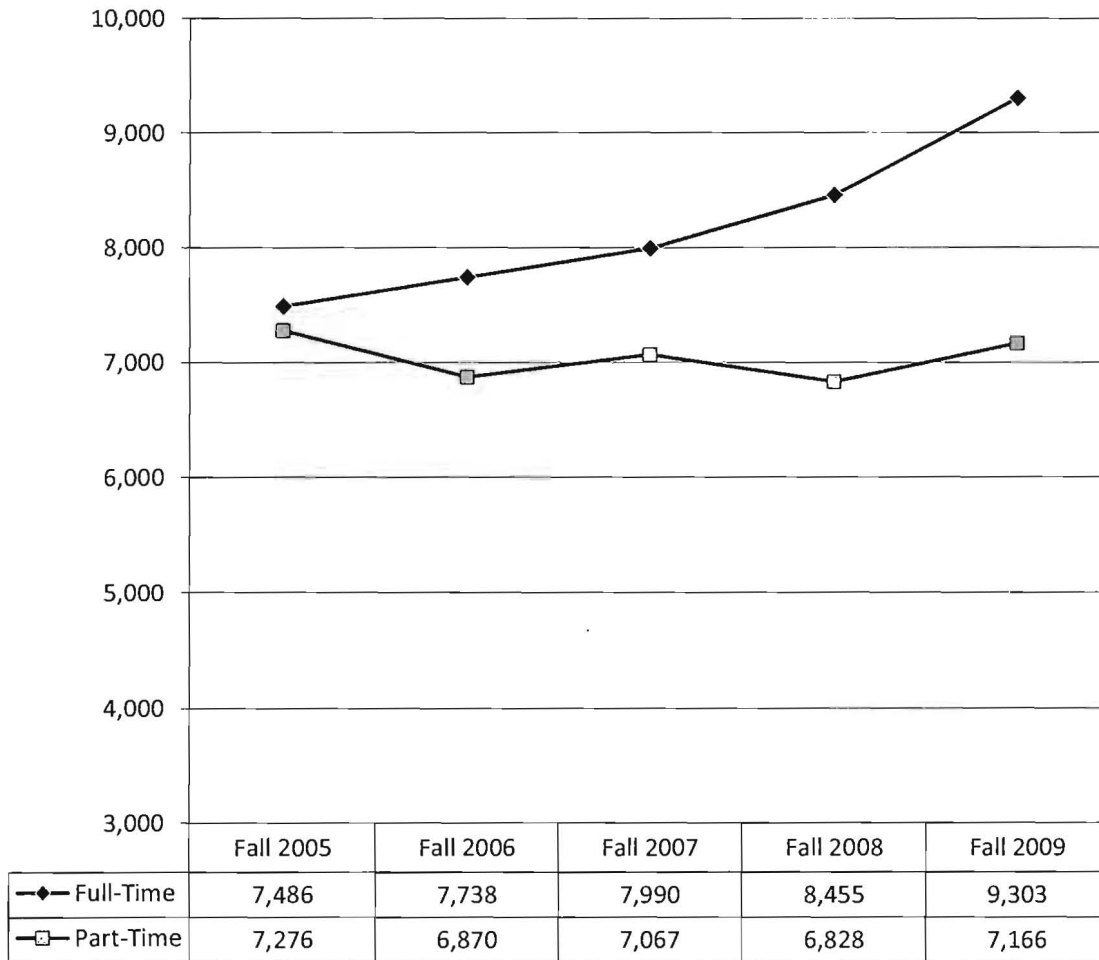
STATUS	1986	1987	1988	1989	1990	1991	1992	1993	1994
Full-Time	3,846	3,712	3,622	4,085	4,235	4,413	4,827	4,958	5,205
Part-Time	7,067	6,977	7,297	7,830	8,052	7,920	7,684	7,896	7,681
TOTAL	10,913	10,689	10,919	11,915	12,287	12,333	12,511	12,854	12,886

STATUS	1995	1996	1997	1998	1999	2000	2001	2002	2003
Full-Time	5,449	5,086	4,926	5,291	5,549	5,580	5,773	6,606	6,907
Part-Time	7,758	7,210	6,372	6,521	6,676	6,413	6,372	6,864	7,084
TOTAL	13,207	12,296	11,298	11,812	12,225	11,993	12,145	13,470	13,991

STATUS	2004	2005	2006	2007	2008	2009
Full-Time	7,258	7,486	7,738	7,990	8,455	9,303
Part-Time	7,067	7,276	6,870	7,067	6,828	7,166
TOTAL	14,325	14,762	14,608	15,057	15,283	16,469

Source: BCHEPR06, SURE Enrollment File

BERGEN COMMUNITY COLLEGE
Enrollment by Status
Fall 2005 – Fall 2009



Source: SURE Enrollment

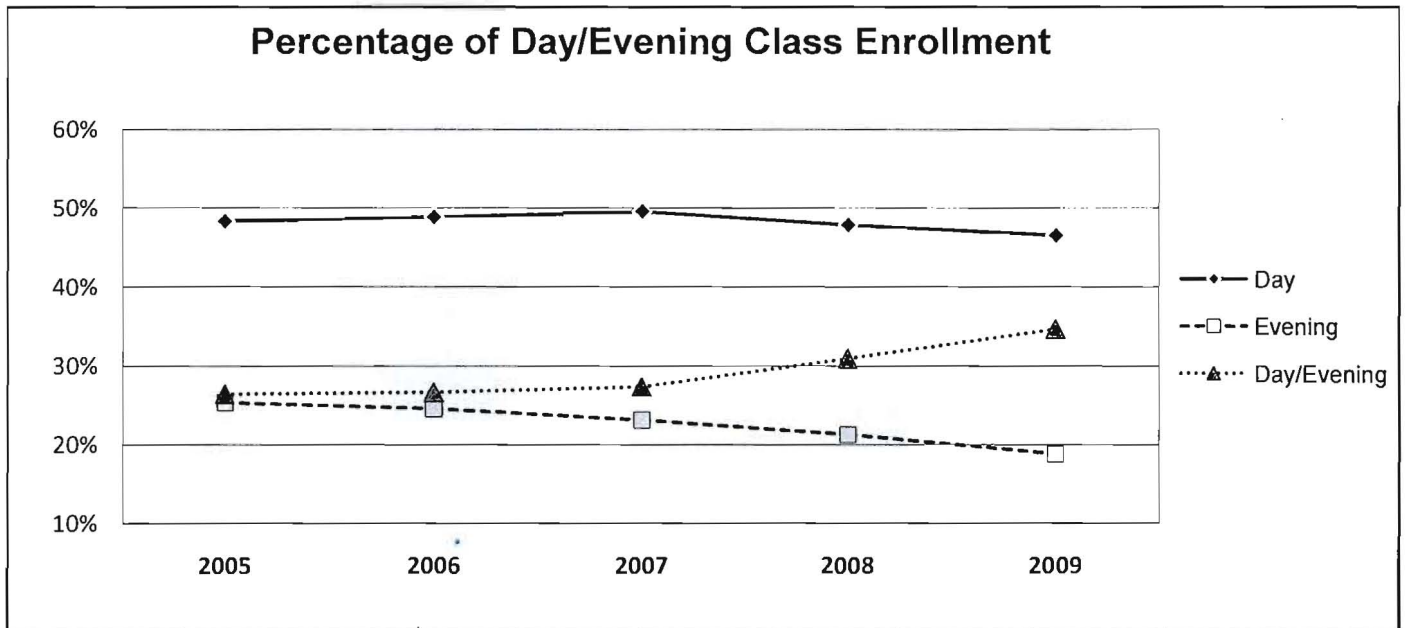
BERGEN COMMUNITY COLLEGE
Enrollment by Day/Evening
Fall 2005 – Fall 2009

	2005		2006		2007		2008		2009	
	Number	%	Number	%	Number	%**	Number	%**	Number	%**
Day	6,439	48.3%	6,628	48.8%	6901	49.5%	7,049	47.8%	7,437	46.5%
Evening*	3,376	25.3%	3,330	24.5%	3219	23.1%	3,137	21.3%	3,009	18.8%
Day/Evening	3,517	26.4%	3,613	26.6%	3,810	27.4%	4,550	30.9%	5,533	34.6%
TOTAL**	13,332		13,571		13,930		14,736		15,979	

*Includes Saturday classes

**Total class enrollments excluding online

Source: Datatel



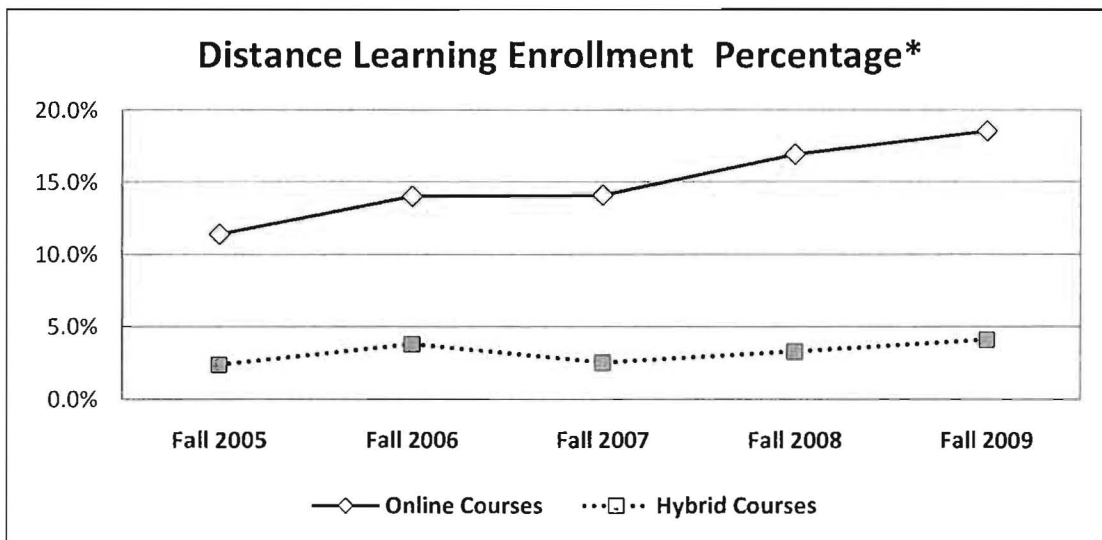
BERGEN COMMUNITY COLLEGE
Distance Learning Enrollment
Fall 2005 – Fall 2009

	2005		2006		2007		2008		2009	
	Number	%**	Number	%**	Number	%**	Number	%**	Number	%**
Online Courses	1,680	11.4%	2,046	14.0%	2,121	14.1%	2,585	16.9%	2,833	18.5%
Hybrid Courses	350	2.4%	554	3.8%	379	2.5%	501	3.3%	626	4.1%
TOTAL	2,030	13.8%	2,600	17.8%	2,500	16.6%	3,086	20.2%	3,459	22.6%

*Unduplicated headcount, based on 10th day numbers

** Percentage of total headcount

Source: DataTel



*Percentage of students enrolled in distance education, as a percentage of total headcount

Program Data

HIGHLIGHTS

- ❖ The proportion of degree-seeking students has continued a steady increase over the past 10 years, to a high of 89.8% of the student population in Fall 2009.
- ❖ First-time, full-time, degree-seeking students represented 30% of all full-time students as well as 17% of the total student population in Fall 2009
- ❖ Over 72% of the students enrolled in Fall 2009 were enrolled in transfer programs.
- ❖ Enrollment in Associate of Arts (A.A.) programs increased by 3.5% and enrollment in Associate of Science (A.S.) programs increased by over 19%, from Fall 2008 to Fall 2009.
- ❖ Enrollment in Associate of Applied Science (A.A.S.) programs increased by 4% from Fall 2008 to Fall 2009. In addition, enrollment in Certificate (CERT) programs increased by 1 student while enrollment in Certificate of Achievement (COA) programs increased by 17 students (44%).
- ❖ Because of a departmental change, a significant increase in students enrolled in Criminal Justice (AS) and a corresponding decrease in Law Enforcement (AAS) was observed in a five-year period from Fall 2005 to Fall 2009. A net increase of 37% was observed in these two programs combined during this period.
- ❖ Programs with the largest increase in number from Fall 2005 to Fall 2009 included General A.S. Professional Studies, Business Administration, and Criminal Justice (AS) in Transfer programs, and Graphic Design/Computer Graphics and Accounting (AAS) in Career programs.
- ❖ Programs with the greatest decrease in number over the same five-year span included General A.A. (Liberal Arts) and Computer Science in Transfer programs, and Radiology, Paralegal, and Graphing/Design Technology in Career programs.

BERGEN COMMUNITY COLLEGE
Student Population by Degree Program
Fall 1974 - Fall 2009

	1974	1975	1976	1977	1978	1979	1980	1981	1982
Transfer Programs	2,766	2,810	2,937	2,775	2,792	2,807	2,810	3,022	2,965
Career Programs	2,678	3,286	3,398	3,375	3,350	3,694	3,849	3,982	4,145
Total Degree	5,444	6,096	6,335	6,150	6,142	6,501	6,659	7,004	7,110
Total Non-Degree	2,847	3,165	3,408	3,854	4,126	4,158	4,874	4,428	4,779
TOTAL	8,291	9,261	9,743	10,004	10,268	10,659	11,533	11,432	11,889

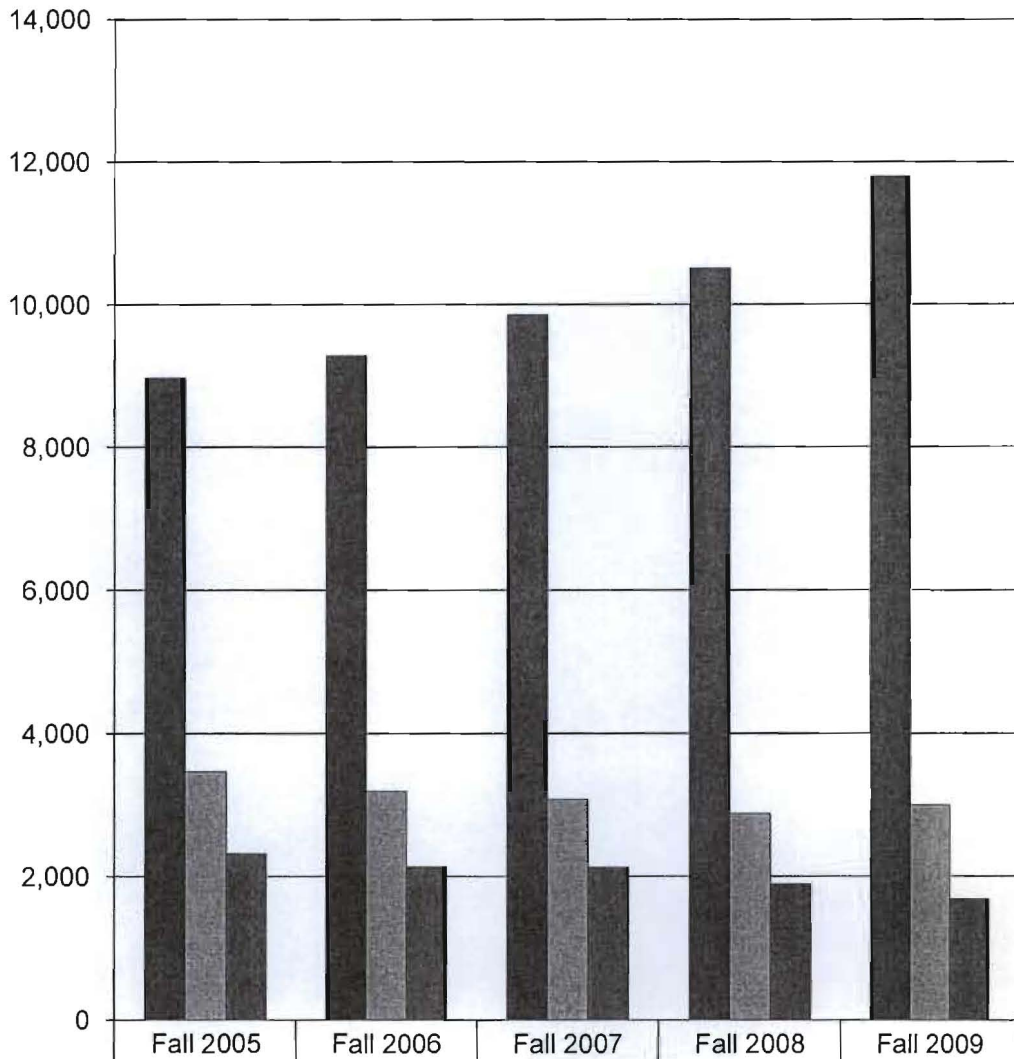
	1983	1984	1985	1986	1987	1988	1989	1990	1991
Transfer Programs	3,001	3,101	3,239	3,359	3,429	3,446	4,004	4,253	4,622
Career Programs	4,277	3,799	3,562	3,427	3,202	3,031	3,298	3,298	3,485
Total Degree	7,278	6,900	6,801	6,786	6,631	6,477	7,302	7,551	8,107
Total Non-Degree	4,767	4,347	4,207	4,127	4,058	4,442	4,613	4,736	4,226
TOTAL	12,045	11,247	11,008	10,913	10,689	10,919	11,915	12,287	12,333

	1992	1993	1994	1995	1996	1997	1998	1999	2000
Transfer Programs	5,216	5,539	5,841	6,061	5,605	5,441	5,854	5,591	5,737
Career Programs	3,443	3,324	3,392	3,310	3,164	2,926	3,027	2,998	2,940
Total Degree	8,659	8,863	9,233	9,371	8,769	8,367	8,881	8,589	8,677
Total Non-Degree	3,852	3,991	3,653	3,836	3,527	2,931	2,931	3,636	3,316
TOTAL	12,511	12,854	12,886	13,207	12,296	11,298	11,812	12,225	11,993

	2001	2002	2003	2004	2005	2006	2007	2008	2009
Transfer Programs	6,074	7,142	7,834	8,407	8,976	9,284	9,856	10,513	11,794
Career Programs	2,989	3,281	3,355	3,459	3,467	3,191	3,073	2,876	2,993
Total Degree	9,063	10,423	11,189	11,866	12,443	12,475	12,929	13,389	14,787
Total Non-Degree	3,082	3,047	2,802	2,459	2,319	2,133	2,128	1,894	1,682
TOTAL	12,145	13,470	13,991	14,325	14,762	14,608	15,057	15,283	16,469

Source: BCHEPR07, SURE Enrollment File

BERGEN COMMUNITY COLLEGE
Student Population by Degree Program
Fall 2005 - Fall 2009



■ Transfer Programs	8,976	9,284	9,856	10,513	11,794
▣ Career Programs	3,467	3,191	3,073	2,876	2,993
■ Non-Degree	2,319	2,133	2,128	1,894	1,682

BERGEN COMMUNITY COLLEGE
Student Population by Degree Program and Registration Status
Fall 2009

PROGRAMS	Full-Time	Part-Time	Total	Percent*
Transfer Programs:				
First Time Students	2,133	622	2,755	16.7%
Transfer Students	634	312	946	5.7%
Stop-out/Re-admit	483	852	1,335	8.1%
Continuing Students	4,093	2,665	6,758	41.0%
Career Programs:				
First Time Students	563	193	756	4.6%
Transfer Students	149	70	219	1.3%
Stop-out/Re-admit	86	250	336	2.0%
Continuing Students	761	921	1,682	10.2%
TOTAL DEGREE SEEKING	8,902	5,885	14,787	89.8%
Non-Degree Seeking:				
First Time Students	156	369	525	3.2%
Transfer Students	61	187	248	1.5%
Stop-out/Re-admit	38	294	332	2.0%
Continuing Students	146	431	577	3.5%
TOTAL NON-DEGREE SEEKING	401	1,281	1,682	10.2%
GRAND TOTAL	9,303	7,166	16,469	100.0%

* Percent of total enrollment.

Source: SURE Enrollment File

BERGEN COMMUNITY COLLEGE
Associate in Arts
Number of Declared Majors
Fall 2005 – Fall 2009

	2005			2006			2007			2008			2009		
	Full Time	Part Time	Total	Full Time	Part Time	Total	Full Time	Part Time	Total	Full Time	Part Time	Total	Full Time	Part Time	Total
Liberal Arts:															
General A.A.	2,182	1,662	3,844	2,068	1,305	3,373	2,031	1,219	3,250	2,138	1,248	3,386	2,131	1,189	3,320
Cinema Studies	27	12	39	22	8	30	21	7	28	29	15	44	37	19	56
Communication Arts	102	49	151	87	47	134	96	51	147	95	63	158	117	60	177
Economics	15	11	26	15	7	22	16	3	19	22	8	30	22	9	31
History	32	26	58	47	21	68	56	21	77	66	26	92	83	37	120
Literature	33	17	50	47	18	65	36	29	65	46	20	66	52	31	83
Philosophy	20	12	32	11	9	20	7	10	17	12	6	18	13	6	19
Political Science	40	17	57	38	11	49	40	7	47	34	21	55	44	24	68
Psychology	246	126	372	264	120	384	272	145	417	306	148	454	342	171	513
Religion	2	3	5	3	1	4	2	0	2	2	3	5	1	6	7
Sociology	32	23	55	24	13	37	38	20	58	35	15	50	30	15	45
Social Sciences	15	5	20	10	8	18	7	6	13	7	10	17	13	4	17
Women's Studies	1	2	3	1	3	4	1	1	2	2	1	3	1	2	3
World Languages & Cultures	16	10	26	23	19	42	19	12	31	29	12	41	24	14	38
Fine and Performing Arts:															
Art	88	35	123	73	42	115	98	53	151	119	53	172	157	80	237
Music Arts-General	46	20	66	52	19	71	40	26	66	47	29	76	70	24	94
Music Arts-Business	21	15	36	41	12	53	45	20	65	41	16	57	52	18	70
Music Arts-Comp. Record	23	6	29	29	10	39	34	14	48	28	18	46	22	17	39
Music Arts-Electronic	7	3	10	7	6	13	8	9	17	14	5	19	10	2	12
Theatre- Dance	6	4	10	6	2	8	10	1	11	9	3	12	16	5	21
Theatre- General	16	13	29	14	12	26	20	12	32	18	11	29	15	10	25
Theatre-Acting	26	7	33	28	13	41	28	9	37	25	15	40	30	18	48
Theatre - Tech. Prod.	17	3	20	10	6	16	5	6	11	9	4	13	9	4	13
TOTAL A.A.	3,013	2,081	5,094	2,920	1,712	4,632	2,930	1,681	4,611	3,133	1,750	4,883	3,291	1,765	5,056

Source: SURE Enrollment File

BERGEN COMMUNITY COLLEGE
Associate in Science
Number of Declared Majors
Fall 2005 – Fall 2009

	2005			2006			2007			2008			2009		
	Full Time	Part Time	Total	Full Time	Part Time	Total	Full Time	Part Time	Total	Full Time	Part Time	Total	Full Time	Part Time	Total
Natural Sciences & Math:															
Gen. A.S. Nat.Sci./Math	135	56	191	121	89	210	158	95	253	208	107	315	221	124	345
Biology	128	54	182	156	67	223	158	66	224	125	63	188	195	92	287
Biotechnology	-	-	-	-	-	-	7	4	11	13	3	16	10	8	18
Chemistry	45	20	65	35	20	55	38	26	64	44	20	64	44	20	64
Computer Science	90	88	178	92	80	172	83	74	157	93	58	151	96	61	157
Mathematics	32	10	42	36	18	54	29	13	42	27	17	44	35	22	57
Physics	6	3	9	6	5	11	6	6	12	12	4	16	14	4	18
Pre-Chiropractic	4	6	10	3	3	6	2	2	4	3	4	7	1	3	4
Engineering Science:															
Engineering Science	77	63	140	84	59	143	80	75	155	103	59	162	126	89	215
Professional Studies:															
General A.S. Pro.Studies	538	541	1,079	791	738	1,529	795	818	1,613	896	836	1,732	1,122	1,029	2,151
Broadcasting	50	40	90	45	37	82	53	35	88	50	37	87	51	33	84
Business Admin.	258	200	458	296	217	513	322	251	573	389	271	660	414	300	714
Bus.Admin.- Acct.	138	123	261	166	144	310	187	158	345	185	145	330	199	143	342
Bus.Admin.- Int'l Trade	80	39	119	64	34	98	62	36	98	71	31	102	68	51	119
Bus.Admin.- Mgmt.	191	154	345	199	138	337	214	149	363	213	138	351	235	173	408
Bus.Admin.-Marketing	96	58	154	115	51	166	120	69	189	133	69	202	154	70	224
Criminal Justice	5	5	10	149	44	193	351	135	486	464	156	620	593	232	825
Education	223	117	340	215	107	322	204	104	308	183	89	272	237	86	323
Exercise Science	50	26	76	45	25	70	63	45	108	74	38	112	86	52	138
Information Technology	-	-	-	-	-	-	0	2	2	14	9	23	27	13	40
Journalism	40	14	54	65	14	79	50	22	72	52	25	77	52	27	79
Social Work	40	39	79	39	40	79	39	39	78	58	41	99	72	54	126
TOTAL A.S.	2,226	1,656	3,882	2,722	1,930	4,652	3,021	2,224	5,245	3,410	2,220	5,630	4,052	2,686	6,738

Note: Dashes indicate that the program was not offered at that time.
Source: SURE Enrollment File

BERGEN COMMUNITY COLLEGE
Associate in Applied Science
Number of Declared Majors
Fall 2005 – Fall 2009

	2005			2006			2007			2008			2009		
	Full Time	Part Time	Total	Full Time	Part Time	Total	Full Time	Part Time	Total	Full Time	Part Time	Total	Full Time	Part Time	Total
Allied Health:															
Dental Hygiene	30	58	88	30	46	76	24	52	76	30	48	78	20	54	74
Diag. Med. Sonography	5	20	25	6	24	30	5	24	29	5	20	25	7	16	23
Health Sciences	5	8	13	3	5	8	3	5	8	0	7	7	1	3	4
Medical Lab. Tech.*	15	6	21	2	4	6	1	1	2	0	0	0	0	0	0
Medical Office Assistant	30	34	64	46	34	80	36	34	70	33	34	67	32	37	69
Physical Therapist Asst.*	9	9	18	3	4	7	1	0	1	0	2	2	0	1	1
Radiography	40	43	83	44	44	88	43	44	87	31	27	58	14	46	60
Respiratory Therapy	35	21	56	35	37	72	47	32	79	38	26	64	40	32	72
Veterinary Tech.	10	8	18	5	11	16	9	9	18	14	27	41	22	23	45
Nursing:															
Nursing-Day & Evening	44	270	314	57	247	304	52	229	281	46	234	280	54	248	302
LPN/ADN Career Mob. Track	-	-	-	-	-	-	-	-	-	0	1	1	0	0	0
Business Administration:															
Accounting	117	110	227	119	100	219	143	124	267	145	123	268	168	107	275
Banking & Finance	80	52	132	71	49	120	92	65	157	107	60	167	86	47	133
Legal Studies	-	-	-	-	-	-	1	12	13	1	10	11	1	6	7
Legal Nurse Consultant	0	9	9	0	9	9	2	4	6	5	4	9	1	3	4
Paralegal	46	78	124	46	67	113	54	59	113	49	55	104	44	58	102
Business Technologies:															
HR-Catering/Banquet Mgmt.	43	16	59	45	22	67	41	22	63	38	19	57	46	16	62
HR-Hospitality Mgmt.	64	46	110	79	37	116	58	44	102	61	41	102	86	43	129
Information Technology	33	50	83	41	48	89	28	48	76	37	46	83	53	49	102
Networking Administration	38	56	94	29	53	82	53	51	104	46	47	93	57	42	99
Office Technology	6	11	17	8	9	17	13	9	22	6	9	15	11	5	16
Travel and Tourism*	16	12	28	2	6	8	0	0	0	0	0	0	0	0	0
Web Develop & Mgmt.	22	16	38	17	19	36	14	19	33	15	11	26	21	14	35
Word Processing**	0	0	0	0	0	0	0	0	0	0	1	1	0	1	1
Human Services:															
Career Ladder: Education & Child Development***	-	-	-	-	-	-	-	-	-	-	-	-	1	0	1
Correctional Studies	7	3	10	1	8	9	9	5	14	3	4	7	2	7	9
Early Childhood Education	156	114	270	147	89	236	128	88	216	128	82	210	156	95	251
Law Enforcement****	477	278	755	373	248	621	226	174	400	127	129	256	128	100	228
Industrial Design Tech:															
Computer Animation	44	25	69	39	22	61	58	24	82	41	33	74	47	23	70
Drafting and Design Tech.	51	49	100	36	42	78	43	38	81	35	40	75	38	40	78
Electronics Technology	29	22	51	24	19	43	22	25	47	41	19	60	30	18	48
Engineering Tech.-General	33	21	54	29	19	48	33	27	60	43	21	64	52	29	81
Graph Design/Comp. Graph	98	71	169	103	75	178	102	91	193	122	82	204	135	91	226
Manufacturing Technology	3	16	19	4	15	19	8	9	17	5	11	16	2	7	9
Science Technology:															
Environmental Technology	2	2	4	2	2	4	8	5	13	4	4	8	11	7	18
Horticulture	8	19	27	11	16	27	8	19	27	12	16	28	11	12	23
Landscape/Design/Build***	-	-	-	-	-	-	-	-	-	-	-	-	0	2	2
Medical Informatics***	-	-	-	-	-	-	-	-	-	-	-	-	3	1	4
Science Laboratory Tech.	5	2	7	3	4	7	8	2	10	10	4	14	7	4	11
TOTAL A.A.S.	1,601	1,564	3,165	1,460	1,440	2,900	1,373	1,397	2,770	1,278	1,297	2,575	1,387	1,287	2,674

Note: Dashes indicate that the program was not offered at that time.

* Program has been discontinued.

** Program was discontinued earlier, student readmitted under old program

*** New Programs: Career Ladder: Education and Child Development, Landscape/Design/Build Option, Medical Informatics

**** Law Enforcement Studies program includes students listed under old Criminal Justice program.

Source: SURE Enrollment File

BERGEN COMMUNITY COLLEGE
Certificate Programs
Number of Declared Majors
Fall 2005 – Fall 2009

Certificates

	2005			2006			2007			2008			2009		
	Full Time	Part Time	Total	Full Time	Part Time	Total	Full Time	Part Time	Total	Full Time	Part Time	Total	Full Time	Part Time	Total
Computer Aided Drafting	4	8	12	6	8	14	3	10	13	2	11	13	1	11	12
Computer Animation	10	10	20	13	8	21	13	5	18	6	4	10	4	5	9
Computer Graphics	15	8	23	16	7	23	14	7	21	16	7	23	8	8	16
Computer Science	19	10	29	11	17	28	13	14	27	11	9	20	5	6	11
Computer Technical Support	7	10	17	7	11	18	7	12	19	4	13	17	9	6	15
Culinary Arts	14	16	30	17	11	28	15	8	23	10	17	27	17	16	33
Database Programing and Admin	-	-	-	-	-	-	-	-	-	1	0	1	1	0	1
E-Commerce: Bus. Emphasis	-	-	-	1	0	1	2	2	4	1	1	2	0	0	0
Environmental Tech.	0	0	0	0	0	0	1	1	2	1	1	2	0	0	0
Event Planning & Management*	-	-	-	-	-	-	-	-	-	-	-	-	1	2	3
Exercise Science	10	5	15	10	6	16	9	6	15	9	9	18	8	8	16
Floral Design	3	4	7	2	3	5	2	2	4	2	4	6	1	0	1
Hospitality Management	11	3	14	7	7	14	3	8	11	4	5	9	8	3	11
Landscaping	4	2	6	1	4	5	1	0	1	3	3	6	2	5	7
Medical Office Admin. Asst.	4	8	12	4	11	15	1	10	11	4	8	12	6	11	17
Music Business	7	2	9	5	0	5	0	4	4	6	1	7	3	1	4
Music Technology	5	1	6	4	3	7	5	0	5	1	3	4	6	2	8
Network & Web Development	3	5	8	2	6	8	0	7	7	1	0	1	0	2	2
Office Technology	0	6	6	2	9	11	5	2	7	4	6	10	1	7	8
Word Processing**	0	0	0	0	0	0	0	0	0	0	0	0	0	1	1
Radiation Therapy Technology	9	1	10	11	0	11	5	0	5	8	0	8	10	0	10
Small Business Mgmt.	12	7	19	12	8	20	16	11	27	13	8	21	6	10	16
Surgical Technology Day/Evening	7	35	42	11	19	30	12	20	32	8	11	19	19	12	31
Transfer Studies: Liberal Arts	-	-	-	-	-	-	7	1	8	11	3	14	19	3	22
Transfer Studies: Sci., Tech., & Prof. Studies	-	-	-	-	-	-	2	1	3	5	1	6	3	3	6
Travel Service	2	1	3	2	1	3	0	1	1	0	1	1	0	1	1
U.S. Studies	1	1	2	0	3	3	1	1	2	4	1	5	3	0	3
Vascular Technology	-	-	-	-	-	-	-	-	-	1	0	1	0	0	0
TOTAL CERTIFICATES	147	145	292	145	142	287	137	133	270	136	127	263	141	123	264

Certificates of Achievement

	2005			2006			2007			2008			2009		
	Full Time	Part Time	Total	Full Time	Part Time	Total	Full Time	Part Time	Total	Full Time	Part Time	Total	Full Time	Part Time	Total
Biotechnology	-	-	-	-	-	-	2	1	3	3	0	3	4	2	6
Business Paraprofessional Mgmt.	-	-	-	-	-	-	-	-	-	-	-	-	1	0	1
Commercial Music Production	2	1	3	0	0	0	4	2	6	3	2	5	4	3	7
Environmental Technology	0	0	0	0	0	0	3	0	3	1	0	1	3	1	4
Finance	-	-	-	-	-	-	-	-	-	3	0	3	0	1	1
Geographic Info. Systems	0	0	0	0	0	0	0	0	0	1	0	1	2	1	3
Homeland Security & Emerg. Mgmt.*	-	-	-	-	-	-	-	-	-	-	-	-	1	1	2
Manufacturing Design	1	1	2	0	0	0	2	0	2	1	0	1	3	1	4
Machine Tooling	-	-	-	-	-	-	3	1	4	3	3	6	0	4	4
Network Security*	-	-	-	-	-	-	-	-	-	-	-	-	0	1	1
Non-profit Management*	-	-	-	-	-	-	-	-	-	-	-	-	1	1	2
Professional Cooking	3	2	5	1	3	4	2	4	6	0	4	4	2	3	5
Quality Assurance	-	-	-	-	-	-	3	0	3	2	1	3	3	4	7
Real Estate	-	-	-	-	-	-	2	4	6	5	4	9	6	1	7
Sports Management*	-	-	-	-	-	-	-	-	-	-	-	-	1	0	1
Special Imaging for Rad. Tech.	-	-	-	-	-	-	-	-	-	0	2	2	0	0	0
TOTAL C.O.A.	6	4	10	1	3	4	21	12	33	22	16	38	31	24	55

Note: Dashes indicate that the program was not offered at that time.

*New Programs: Event Planning & Mgmt., Homeland Sec. & Emergency Mgmt., Network Security, Non-Profit Mgmt., Sports Mgmt.

**Program was discontinued, student was readmitted under old program

Source: SURE Enrollment File

BERGEN COMMUNITY COLLEGE
Transfer Programs
Five-Year Change
Fall 2005 – Fall 2009

Degree	Program	Fall 2005	Fall 2009	Change	% Change
AS	General A.S. Pro.Studies	1079	2151	1,072	99.4%
AS	Criminal Justice*	10	825	815	8150.0%
AS	Business Admin.	458	714	256	55.9%
AS	Gen. A.S. Nat.Sci./Math	191	345	154	80.6%
AA	Psychology	372	513	141	37.9%
AA	Art	123	237	114	92.7%
AS	Biology	182	287	105	57.7%
AS	Bus.Admin. - Acct.	261	342	81	31.0%
AS	Engineering Science	140	215	75	53.6%
AS	Bus.Admin. -Marketing	154	224	70	45.5%
AS	Bus.Admin. - Mgmt.	345	408	63	18.3%
AA	History	58	120	62	106.9%
AS	Exercise Science	76	138	62	81.6%
AS	Social Work	79	126	47	59.5%
AA	Music Arts-Business	36	70	34	94.4%
AA	Literature	50	83	33	66.0%
AA	Music Arts-General	66	94	28	42.4%
AA	Communication Arts	151	177	26	17.2%
AS	Journalism	54	79	25	46.3%
AA	Cinema Studies	39	56	17	43.6%
AA	Theatre-Acting	33	48	15	45.5%
AS	Mathematics	42	57	15	35.7%
AA	World Languages & Cultures	26	38	12	46.2%
AA	Political Science	57	68	11	19.3%
AA	Theatre- Dance	10	21	11	110.0%
AA	Music Arts-Comp. Record	29	39	10	34.5%
AS	Physics	9	18	9	100.0%
AA	Economics	26	31	5	19.2%
AA	Religion	5	7	2	40.0%
AA	Music Arts-Electronic	10	12	2	20.0%
AA	Women's Studies	3	3	0	0.0%
AS	Bus.Admin. - Int'l Trade	119	119	0	0.0%
AS	Chemistry	65	64	-1	-1.5%
AA	Social Sciences	20	17	-3	-15.0%
AA	Theatre- General	29	25	-4	-13.8%
AS	Pre-Chiropractic	10	4	-6	-60.0%
AS	Broadcasting	90	84	-6	-6.7%
AA	Theatre - Tech. Prod.	20	13	-7	-35.0%
AA	Sociology	55	45	-10	-18.2%
AA	Philosophy	32	19	-13	-40.6%
AS	Education	340	323	-17	-5.0%
AS	Computer Science	178	157	-21	-11.8%
AA	General A.A.	3,844	3,320	-524	-13.6%

Note: New and discontinued programs as of Fall 2009 not included

*In 2004, AAS Criminal Justice was replaced by AS Criminal Justice and AAS Law Enforcement degrees.

BERGEN COMMUNITY COLLEGE
Career Programs
Five-Year Change
Fall 2005 – Fall 2009

Degree	Program	Fall 2005	Fall 2009	Change	% Change
AAS	Graph Design/Comp. Graph	169	226	57	33.7%
AAS	Accounting	227	275	48	21.1%
AAS	Veterinary Tech.	18	45	27	150.0%
AAS	Engineering Tech.-General	54	81	27	50.0%
AAS	HR-Hospitality Mgmt.	110	129	19	17.3%
AAS	Information Technology	83	102	19	22.9%
AAS	Respiratory Therapy	56	72	16	28.6%
AAS	Environmental Technology	4	18	14	350.0%
AAS	Medical Office Assistant	64	69	5	7.8%
AAS	Networking Administration	94	99	5	5.3%
Cert	Medical Office Admin. Asst.	12	17	5	41.7%
AAS	Science Laboratory Tech.	7	11	4	57.1%
COA	Commercial Music Production	3	7	4	133.3%
AAS	HR-Catering/Banquet Mgmt.	59	62	3	5.1%
Cert	Culinary Arts	30	33	3	10.0%
Cert	Music Technology	6	8	2	33.3%
Cert	Office Technology	6	8	2	33.3%
COA	Manufacturing Design	2	4	2	100.0%
AAS	Banking & Finance	132	133	1	0.8%
AAS	Computer Animation	69	70	1	1.4%
Cert	Exercise Science	15	16	1	6.7%
Cert	Landscaping	6	7	1	16.7%
Cert	U.S. Studies	2	3	1	50.0%
Cert	Computer Aided Drafting	12	12	0	0.0%
Cert	Radiation Therapy Technology	10	10	0	0.0%
COA	Professional Cooking	5	5	0	0.0%
AAS	Office Technology	17	16	-1	-5.9%
AAS	Correctional Studies	10	9	-1	-10.0%
AAS	Diag.Med.Sonography	25	23	-2	-8.0%
Cert	Computer Technical Support	17	15	-2	-11.8%
AAS	Web Develop & Mgmt.	38	35	-3	-7.9%
AAS	Electronics Technology	51	48	-3	-5.9%
Cert	Hospitality Management	14	11	-3	-21.4%
Cert	Small Business Mgmt.	19	16	-3	-15.8%
AAS	Horticulture	27	23	-4	-14.8%
AAS	Legal Nurse Consultant	9	4	-5	-55.6%
Cert	Music Business	9	4	-5	-55.6%
Cert	Floral Design	7	1	-6	-85.7%
Cert	Network & Web Development	8	2	-6	-75.0%
Cert	Computer Graphics	23	16	-7	-30.4%
AAS	Health Sciences	13	4	-9	-69.2%
AAS	Manufacturing Technology	19	9	-10	-52.6%
Cert	Computer Animation	20	9	-11	-55.0%
Cert	Surgical Technology Day/Evening	42	31	-11	-26.2%
AAS	Nursing-Day & Evening	314	302	-12	-3.8%
AAS	Dental Hygiene	88	74	-14	-15.9%
Cert	Computer Science	29	11	-18	-62.1%
AAS	Early Childhood Education	270	251	-19	-7.0%
AAS	Paralegal	124	102	-22	-17.7%
AAS	Drafting and Design Tech.	100	78	-22	-22.0%
AAS	Radiography	83	60	-23	-27.7%
AAS	Law Enforcement*	755	228	-527	-69.8%

Note: New and discontinued programs as of Fall 2009 not included

*In 2004, AAS Criminal Justice was replaced by AS Criminal Justice and AAS Law Enforcement degrees.

Number of Credits

HIGHLIGHTS

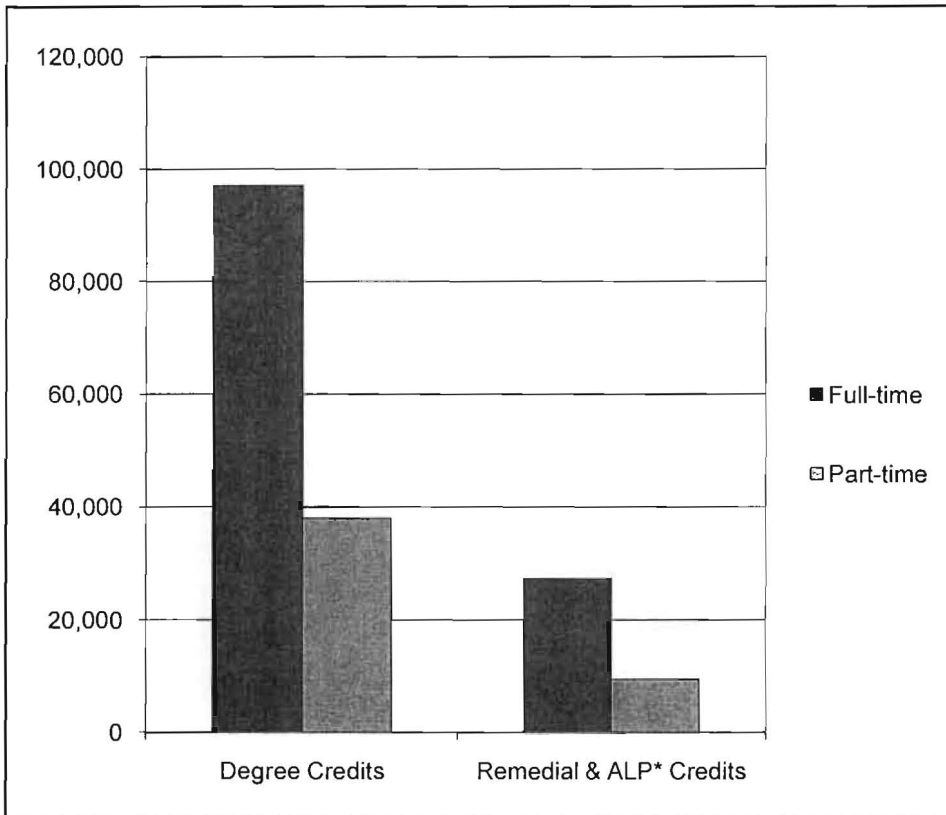
- ❏ In the Fall 2009 semester, students were enrolled in a total of 171,648 credits. Seventy-nine percent (79%; 134,958 credits) of these credit enrollments were degree credits with the other 21% (36,690 credits) coming from remedial and American Language Program courses.
- ❏ In Fall 2009, students in transfer and career programs were enrolled in 144,276 credits, a 1.5% increase from Fall 2008. Non-degree students were enrolled in a total of 13,471 credits, a decrease of -12% from Fall 2008.
- ❏ Of the total 171,648 enrolled credits in Fall 2009, 72% were generated by full-time students, which was identical to last year.
- ❏ The percentage of total semester credits consisting of credits from distance education courses (online and hybrid) has stayed consistent at 8.5% from Fall 2008 to Fall 2009.

**BERGEN COMMUNITY COLLEGE
Number of Credits by Student Status
Fall 2009**

Student Status	Degree Credits	Remedial & ALP* Credits	Total
Full-time	97,055	27,273	124,328
Part-time	37,903	9,417	47,320
Total	134,958	36,690	171,648

* American Language Program.

Source: SURE Enrollment File

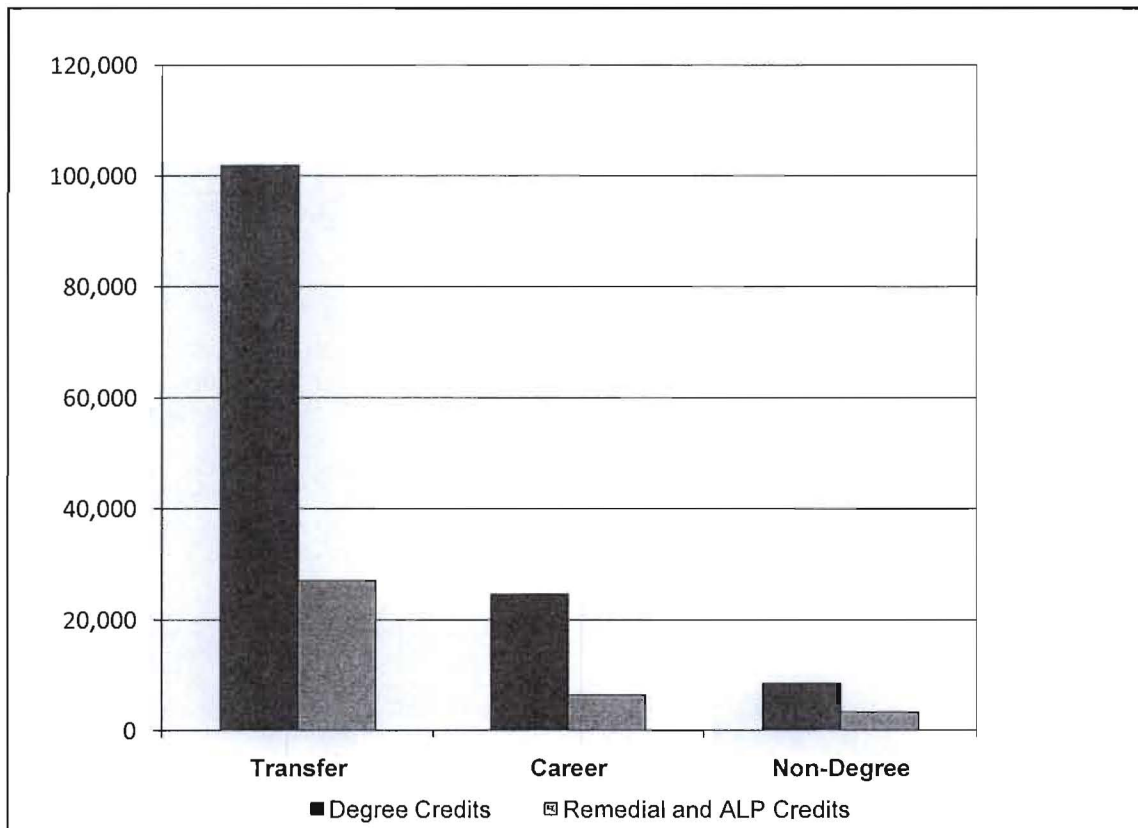


BERGEN COMMUNITY COLLEGE
Number of Credits by Degree Program
Fall 2009

	Degree Credits	Remedial & ALP* Credits	Total
Transfer Programs	101,837	27,037	128,874
Career Programs	24,625	6,390	31,015
Total Degree	126,462	33,427	159,889
Non-Degree	8,496	3,263	11,759
Total	134,958	36,690	171,648

* American Language Program.

Source: SURE Enrollment File

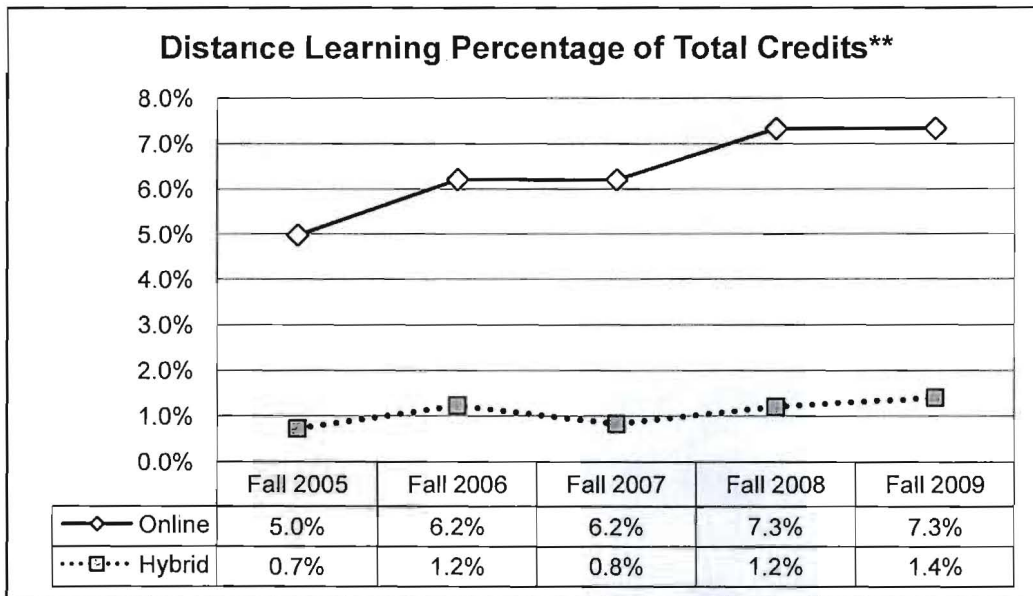


BERGEN COMMUNITY COLLEGE
Distance Education Credits
Fall 2005 - Fall 2009

Student Status	Fall 2005	Fall 2006	Fall 2007	Fall 2008	Fall 2008
Online	7,295	9,152	9,462	11,572	12,578
Hybrid	1,069	1,815	1,270	1,899	2,439
Face-to-face	139,271	138,262	143,034	146,175	156,370
Total*	146,566	147,414	152,496	157,747	171,648

*Total unduplicated credits may not be exact match

Source: Datatel



**Percentage of online and hybrid credits out of total semester credits

***Non-Credit
Enrollment***

HIGHLIGHTS

- ❏ Non-credit enrollments are offered in three areas: Continuing Education, Ciarco Learning Center and the Institute for Learning in Retirement.

- ❏ The total unduplicated headcount of the Open Enrollment courses in all non-credit areas for FY 2009 was 8,282 students, a -7.5% decline from FY 2008.

- ❏ In addition, an additional 1,266 students were enrolled in Customized Training courses in the Continuing Education area during FY 2009.

- ❏ The total number of contact hours taken by non-credit students was 494,781 in FY 2009, a decrease of -13% from FY 2008.

BERGEN COMMUNITY COLLEGE
Continuing Education Enrollment
Fiscal Year 2009

		Open Enrollment	Customized Training*	Total
	Unduplicated headcount	3,871	1,266	5,137
Number of enrollments	Fundable enrollments	1,072	0	1,072
	Non fundable enrollments	4,941	810	5,751
	Total enrollments**	6,013	810	6,823
Contact hours	Fundable contact hours	31,933.50	0.00	31,933.50
	Non fundable contact hours	79,278.50	16,191.50	95,470.00
	Total contact hours	111,212.00	16,191.50	127,403.50
Enrollments by audience	Adult	5,697	1,662	7,359
	Senior	0	0	0
	Total enrollments	316	0	316
Enrollments by content	Career	4,862	1,662	6,524
	Avocational	1,151	0	1,151

Note: As reported to New Jersey Council of County Colleges, 10/09

**There may be duplication of individuals in open enrollment courses and customized training*

***The open enrollment courses are those which began within FY2009. The customized training courses are those which ended within FY 2009.*

BERGEN COMMUNITY COLLEGE
Ciarco Learning Center Enrollment
Fiscal Year 2009

		Open Enrollment*
	Unduplicated headcount	3,545
Number of enrollments	Fundable enrollments	2,979
	Non fundable enrollments	5,146
	Total enrollments	8,125
Contact hours	Fundable contact hours	148,838.00
	Non fundable contact hours	187,372.00
	Total contact hours	336,210.00
Enrollments by audience	Senior	0
	Adult	8,125
	Youth	0
Enrollments by content	Career	8,105
	Avocational	20

Note: As reported to New Jersey Council of County Colleges, 10/09

** No customized training courses were offered in FY2009.*

Open enrollment courses included are those which began within FY2009 (7/1/08-6/30/09).

BERGEN COMMUNITY COLLEGE
Institute for Learning in Retirement Enrollment
Fiscal Year 2009

		Open Enrollment
	Unduplicated headcount	866
Number of enrollments	Fundable enrollments	0
	Non fundable enrollments	3,727
	Total enrollments	3,727
Contact hours	Fundable contact hours	0.00
	Non fundable contact hours	31,167.50
	Total contact hours	31,167.50
Enrollments by audience	Adult	0
	Senior	3,727
	Youth	0
Enrollments by content	Career	0
	Avocational	3,727

Note: As reported to New Jersey Council of County Colleges, 10/09

Open enrollment courses included are those which began within FY2009 (7/1/08-6/30/09).

Degrees Awarded

HIGHLIGHTS

- ❏ The 1,542 degrees and certificates awarded to students during the 2009 academic year again set a new high for the college.

- ❏ The number of degrees awarded in Transfer programs (A.A. and A.S) increased by 8%, from 913 in 2008 to 989 in 2009.

- ❏ The number of degrees awarded in Career programs (A.A.S and Certificate/COA) increased by 3%, from 520 in 2008 to 533 in 2009.

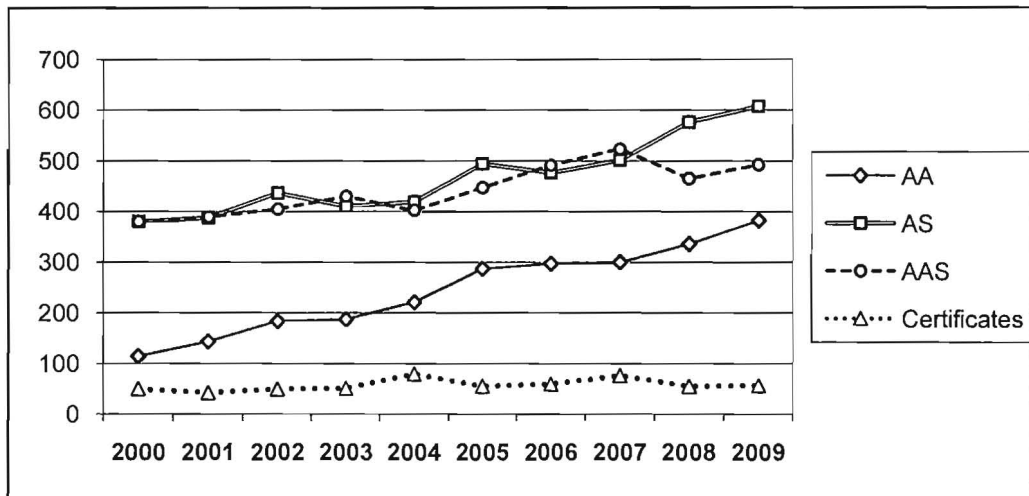
- ❏ Over the past 10 years (2000-2009), 12,136 degrees and certificates have been awarded, including:
 - 2,450 A.A. Degrees
 - 4,709 A.S. Degrees
 - 4,401 A.A.S Degrees
 - 576 Certificates

BERGEN COMMUNITY COLLEGE
Degrees and Certificates Awarded
2000 – 2009

DEGREE PROGRAM	2000	2001	2002	2003	2004
A.A. Degrees	114	143	183	187	221
A.S. Degrees	380	387	436	410	419
Total Transfer Programs	494	530	619	597	640
A.A.S. Degrees	380	389	404	430	402
Certificates	49	42	49	51	79
Total Career Programs	429	431	453	481	481
TOTAL DEGREES AWARDED	923	961	1,072	1,078	1,121

DEGREE PROGRAM	2005	2006	2007	2008	2009
A.A. Degrees	287	297	300	336	382
A.S. Degrees	494	476	523	577	607
Total Transfer Programs	781	773	823	913	989
A.A.S. Degrees	447	491	501	465	492
Certificates	55	59	76	55	61
Total Career Programs	502	550	577	520	553
TOTAL DEGREES AWARDED	1,283	1,323	1,400	1,433	1,542

Source: BCHEPR10, SURE Graduate File



BERGEN COMMUNITY COLLEGE
Associate in Arts
Degrees Awarded
2005 – 2009

Programs	2005	2006	2007	2008	2009
Liberal Arts:					
General A.A.	205	195	184	235	249
Cinema Studies	1	1	2	1	1
Communication Arts	10	11	12	9	17
Economics	0	0	1	1	1
Foreign Languages	4	2	6	3	2
History	6	6	9	5	15
Literature	2	3	5	7	5
Philosophy and Religion	1	5	3	3	3
Political Science	7	5	6	2	4
Psychology	24	34	40	41	42
Social Science	0	0	0	0	1
Sociology	2	2	5	7	4
Fine and Performing Arts:					
Art	12	17	10	8	18
Music-General	4	4	5	2	8
Music-Business	2	3	2	6	5
Music-Computer Based Recording	1	4	3	0	2
Music-Electronic	0	1	1	1	1
Theater Arts-General	3	1	3	2	3
Theater Arts-Acting	2	1	3	2	1
Theater Arts-Tech. Prod.	1	2	0	0	1
Theater Arts-Dance	0	0	0	1	1
TOTAL A.A.	287	297	300	336	384

Source: SURE Graduate File

BERGEN COMMUNITY COLLEGE
Associate in Science
Degrees Awarded
2005 – 2009

Programs	2005	2006	2007	2008	2009
Natural Sciences and Mathematics:					
General A.S. - Natural Sciences and Mathematics	33	25	34	40	33
Biology	2	5	3	7	10
Chemistry	3	4	3	2	4
Computer Science	19	17	16	9	11
Mathematics	6	2	4	3	2
Physics	1	0	1	0	1
Engineering Science:					
Engineering Science	7	6	7	8	1
Professional Studies:					
General A.S. - Professional Concentration	212	209	223	221	261
Broadcasting	20	10	12	9	5
Business Administration	61	65	72	75	67
Business Administration - Accounting	32	34	49	62	76
Business Administration - International Trade	16	11	11	13	16
Business Administration - Management	39	38	37	43	39
Business Administration - Marketing	20	16	14	23	20
Criminal Justice	0	0	7	24	27
Education	11	15	13	13	14
Exercise Science	7	6	3	12	9
Journalism	1	3	3	4	3
Social Work	4	10	11	9	6
TOTAL A.S.	494	476	523	577	605

Source: SURE Graduate File

BERGEN COMMUNITY COLLEGE
Associate in Applied Science
Degrees Awarded
2005 – 2009

Programs	2005	2006	2007	2008	2009
Health Professions:					
Dental Hygiene	29	42	35	34	37
Diagnostic Medical Sonography	9	7	8	11	11
Medical Laboratory Technology	12	11	2	1	0
Medical Office Assistant	5	9	20	14	18
Physical Therapist Assistant*	7	13	9	1	0
Radiography	27	32	35	38	37
Respiratory Therapy	21	22	30	39	28
Vascular Technology*	0	4	0	0	0
Health:					
Health Science	2	4	1	4	10
Veterinary Technology	9	5	11	3	17
Nursing:					
Nursing-Day & Evening	102	114	120	103	94
Business Administration:					
Accounting	12	23	23	13	18
Banking and Finance**	6	7	9	7	7
Legal Nurse Consultant	0	0	8	4	2
Legal Assistant	0	0	0	0	4
Paralegal	15	17	14	12	31
Business Technologies:					
Hospitality Management	11	12	9	15	17
Catering/Banquet Management	3	6	8	7	11
Information Technology	5	7	8	4	3
Networking Administration	28	15	16	24	19
Office Technology	3	0	6	3	1
Travel and Tourism*	3	9	4	0	0
Web Development/Management	5	2	2	4	4
Human Services:					
Corrections	0	0	1	1	1
Early Childhood Education	19	17	14	13	12
Law Enforcement***	56	52	64	56	59
Industrial and Design Technologies:					
Computer Animation	6	9	5	13	8
Graphic Design/Computer Graphics	33	24	19	17	20
Drafting and Design Technology	7	14	7	14	9
Electrical Technology	0	2	3	0	5
Engineering Technology General	2	2	2	3	4
Engineering Technology Manufacturing	1	1	1	0	2
Science Technologies:					
Ornamental Horticulture	5	9	7	7	3
TOTAL A.A.S.	447	491	501	465	492

* Program has been discontinued.

** Due to a title change, Banking, Credit and Finance is now Banking and Finance.

*** Due to a title change in 2004, Criminal Justice is now Law Enforcement.

Source: SURE Graduate File

BERGEN COMMUNITY COLLEGE
Certificates Awarded
2005 – 2009

Programs*	2005	2006	2007	2008	2009
Certificates					
Computer Aided Drafting Technology	3	6	8	2	8
Computer Animation	0	2	0	0	0
Computer Graphics	0	0	2	0	0
Computer Science	1	0	0	3	0
Computer Technical Support**	2	2	1	1	1
Culinary Arts	3	3	2	3	1
Database Programming and Administration	0	0	0	0	1
Exercise Science	3	1	5	1	1
Hospitality Management	3	1	0	3	5
Landscaping	2	0	0	0	1
Medical Office Administrative Assistant	1	2	4	3	3
Music Technology	0	0	0	0	1
Networking and Web Development	1	0	1	2	0
Office Studies-Word Processing	0	0	0	0	0
Office Technology	1	0	1	0	2
Radiation Therapy Technology	0	0	9	10	4
Small Business Management	0	1	3	1	1
Surgical Technology	30	36	34	16	26
Travel Service	1	0	0	6	0
Certificates of Achievement					
Biotechnology**	0	0	0	0	1
Commercial Music Production**	0	0	0	1	0
Finance**	0	0	0	0	2
Floral Design**	1	1	1	1	1
Machine Tooling**	0	0	0	0	1
Manufacturing Design**	2	2	4	2	1
Professional Cook**	1	1	1	0	0
TOTAL CERTIFICATES	55	59	76	55	55

* Discontinued programs with no completions in 2009 not shown.

** Due to a title change, Computer Tech./Help Desk Support is now Computer Technical Support.

Source: SURE Graduate File

Faculty
Characteristics

HIGHLIGHTS

- ❑ The faculty of Bergen Community College includes 76 Professors, 76 Associate Professors, 113 Assistant Professors, 14 Instructors, 6 Associate Instructors, and 84 Lecturers. A total of 630 Adjunct Instructors completed the faculty roster for Fall 2009.
- ❑ Seventy-five percent (76%) of all full-time faculty are either tenured or on tenure track.
- ❑ The highest degrees held by full-time faculty are as follows: 87 Doctorate (24%), 272 Master's degrees (74%) and 10 Bachelor or other degrees (2%).
- ❑ The highest degrees held by adjunct faculty are as follows: 100 doctorate (16%), 412 Master's degrees (65%), 58 Bachelor's degrees (9%), and 60 unknown or other degree (10%).

BERGEN COMMUNITY COLLEGE
Full-Time Faculty
by Division, Rank and Gender
Fall 2009

DIVISIONS	Professor		Associate Professor		Assistant Professor		Instructor		Associate Instructor		Lecturer		Total		Faculty Total
	M	F	M	F	M	F	M	F	M	F	M	F	M	F	
Arts, Humanities, and Wellness															
Communication	0	1	1	1	3	3	0	0	0	0	1	2	5	7	12
History & Geography	1	0	2	0	3	0	0	0	0	0	1	1	7	1	8
World Languages & Cultures	0	1	0	1	0	3	0	1	0	0	0	3	0	9	9
Performing Arts	0	1	1	2	3	0	0	0	0	0	2	0	6	3	9
Philosophy & Religion	2	0	0	0	2	2	0	0	0	0	1	0	5	2	7
Visual Arts	0	0	2	0	1	4	0	0	0	0	2	0	5	4	9
Wellness & Exercise Science	4	2	1	1	0	1	0	0	0	0	1	0	6	4	10
DIVISION TOTAL	7	5	7	5	12	13	0	1	0	0	8	6	34	30	64
Business, Social Science, and Public Service															
Business, Accounting, & Finance	1	3	2	1	2	2	0	1	0	0	2	1	7	8	15
Computer Informatics	0	0	1	0	1	0	0	0	0	0	0	0	2	0	2
Education	0	1	0	0	0	1	0	0	0	0	0	1	0	3	3
Hospitality & Restaurant Management	1	0	3	0	0	0	0	0	0	0	0	1	4	1	5
Information Technology	2	1	0	1	2	0	0	0	0	0	0	1	4	3	7
Legal & Related Studies	1	0	0	0	1	0	0	0	0	0	1	0	3	0	3
Public Service	0	0	2	0	2	0	0	0	0	0	0	0	4	0	4
Social Sciences	6	3	2	0	2	5	0	0	0	0	2	4	12	12	24
DIVISION TOTAL	11	8	10	2	10	8	0	1	0	0	5	8	36	27	63
English															
American Language Program	3	1	2	2	0	6	0	0	0	0	1	1	6	10	16
ALP Speech	2	0	0	1	0	1	0	0	0	0	0	1	2	3	5
Composition & Literature	3	3	1	2	2	5	2	2	0	0	4	3	12	15	27
English Basic Skills	2	2	3	4	1	4	1	1	0	0	5	5	12	16	28
DIVISION TOTAL	10	6	6	9	3	16	3	3	0	0	10	10	32	44	76
Health Professions															
Allied Health	0	0	0	0	0	0	0	0	0	0	1	0	1	0	1
Dental Hygiene	0	0	0	1	0	3	0	0	0	0	0	2	0	6	6
Diagnostic Medical Sonography	0	2	0	0	0	0	0	0	0	1	0	0	0	3	3
Medical Office Technology	0	0	0	0	1	0	0	0	0	0	0	0	1	0	1
Nursing	0	5	0	5	0	7	0	0	0	0	0	3	0	20	20
Radiation Therapy	0	0	0	0	0	1	0	0	0	0	0	1	0	2	2
Radiography	0	0	0	1	1	0	0	0	0	0	0	1	1	2	3
Respiratory Therapy	1	0	0	1	1	0	0	0	0	0	0	0	2	1	3
Surgical Technology	0	0	0	0	1	0	0	0	0	1	0	1	1	2	3
Veterinary Technology	0	0	0	0	0	1	0	0	0	2	0	0	0	3	3
DIVISION TOTAL	1	7	0	8	4	12	0	0	0	4	1	8	6	39	45
Math, Science, and Technology															
Biology & Horticulture	4	1	4	2	2	3	0	0	0	0	4	3	14	9	23
College Mathematics	1	2	2	2	0	6	0	0	0	0	2	1	5	11	16
Developmental Mathematics	1	0	0	1	0	6	0	4	1	0	8	5	10	16	26
Industrial & Design Technology	1	0	0	0	1	0	0	0	1	0	1	0	4	0	4
Physical Science	2	4	2	0	4	1	0	1	0	0	1	1	9	7	16
DIVISION TOTAL	9	7	8	5	7	16	0	5	2	0	16	10	42	43	85
Total Teaching Faculty	38	33	31	29	36	65	3	10	2	4	40	42	150	183	333
Library & Learning Resources Center	0	0	0	4	0	6	0	0	0	0	0	2	0	12	12
Total Instructional	38	33	31	33	36	71	3	10	2	4	40	44	150	195	345
Student Services	2	3	4	7	1	5	0	1	0	0	0	0	7	16	23
Community and Cultural Affairs	0	0	0	1	0	0	0	0	0	0	0	0	0	1	1
TOTAL	40	36	35	41	37	76	3	11	2	4	40	44	157	212	369

Note: Faculty on released time are included in the division of their primary academic affiliation.

Tenure is not available to lecturers.

Source: HR FCLTY2009

BERGEN COMMUNITY COLLEGE
Full-Time Faculty
by Race/Ethnicity and Gender
Fall 2009

DIVISIONS	White		Black		Hispanic		Asian		Am. Indian		Unknown		Faculty Total
	M	F	M	F	M	F	M	F	M	F	M	F	
Arts, Humanities, and Wellness													
Communication	5	7	0	0	0	0	0	0	0	0	0	0	12
History & Geography	3	1	1	0	1	0	1	0	0	0	1	0	8
World Languages & Cultures	0	5	0	0	0	2	0	1	0	1	0	0	9
Performing Arts	6	3	0	0	0	0	0	0	0	0	0	0	9
Philosophy & Religion	4	2	0	0	0	0	0	0	1	0	0	0	7
Visual Arts	5	3	0	0	0	0	0	1	0	0	0	0	9
Wellness & Exercise Science	6	4	0	0	0	0	0	0	0	0	0	0	10
DIVISION TOTAL	29	25	1	0	1	2	1	2	1	1	1	0	64
Business, Social Science, and Public Service													
Business, Accounting, & Finance	5	7	2	1	0	0	0	0	0	0	0	0	15
Computer Informatics	0	1	0	0	0	0	1	0	0	0	0	0	2
Education	0	1	0	2	0	0	0	0	0	0	0	0	3
Hospitality & Restaurant Management	4	1	0	0	0	0	0	0	0	0	0	0	5
Information Technology	4	3	0	0	0	0	0	0	0	0	0	0	7
Legal & Related Studies	3	0	0	0	0	0	0	0	0	0	0	0	3
Public Service	4	0	0	0	0	0	0	0	0	0	0	0	4
Social Sciences	12	7	0	3	0	0	0	2	0	0	0	0	24
DIVISION TOTAL	32	20	2	6	0	0	1	2	0	0	0	0	63
English													
American Language Program	5	5	0	0	0	3	1	1	0	0	0	1	16
ALP Speech	1	2	1	1	0	0	0	0	0	0	0	0	5
Composition & Literature	11	14	0	0	0	0	0	0	0	0	1	1	27
English Basic Skills	10	16	2	0	0	0	0	0	0	0	0	0	28
DIVISION TOTAL	27	37	3	1	0	3	1	1	0	0	1	2	76
Health Professions													
Allied Health	1	0	0	0	0	0	0	0	0	0	0	0	1
Dental Hygiene	0	6	0	0	0	0	0	0	0	0	0	0	6
Medical Office Technology	1	0	0	0	0	0	0	0	0	0	0	0	1
Nursing	0	18	0	0	0	1	0	1	0	0	0	0	20
Radiography	1	2	0	0	0	0	0	0	0	0	0	0	3
Radiation Therapy	0	2	0	0	0	0	0	0	0	0	0	0	2
Respiratory Therapy	2	1	0	0	0	0	0	0	0	0	0	0	3
Diagnostic Medical Sonography	0	3	0	0	0	0	0	0	0	0	0	0	3
Surgical Technology	0	2	0	0	0	0	1	0	0	0	0	0	3
Veterinary Technology	0	3	0	0	0	0	0	0	0	0	0	0	3
DIVISION TOTAL	5	37	0	0	0	1	1	1	0	0	0	0	45
Math, Science, and Technology													
Biology & Horticulture	12	8	1	1	0	0	1	0	0	0	0	0	23
College Mathematics	4	10	1	0	0	0	0	1	0	0	0	0	16
Developmental Mathematics	9	9	1	1	0	3	0	3	0	0	0	0	26
Industrial & Design Technology	3	0	0	0	0	0	0	0	0	0	1	0	4
Physical Science	8	6	1	0	0	0	0	1	0	0	0	0	16
DIVISION TOTAL	36	33	4	2	0	3	1	5	0	0	1	0	85
Total Teaching Faculty	129	152	10	9	1	9	5	11	1	1	3	2	333
Library & Learning Resources Center	0	10	0	1	0	0	0	1	0	0	0	0	12
Total Instructional	129	162	10	10	1	9	5	12	1	1	3	2	345
Student Services	6	10	2	2	0	2	0	1	0	0	0	0	23
Community and Cultural Affairs	0	1	0	0	0	0	0	0	0	0	0	0	1
TOTAL	135	173	12	12	1	11	5	13	1	1	3	2	369

Note: Faculty on released time are included in the division of their primary academic affiliation.

Tenure is not available to lecturers.

Source: HR FCLTY2009

BERGEN COMMUNITY COLLEGE
Full-Time Faculty
by Tenure and Division
Fall 2009

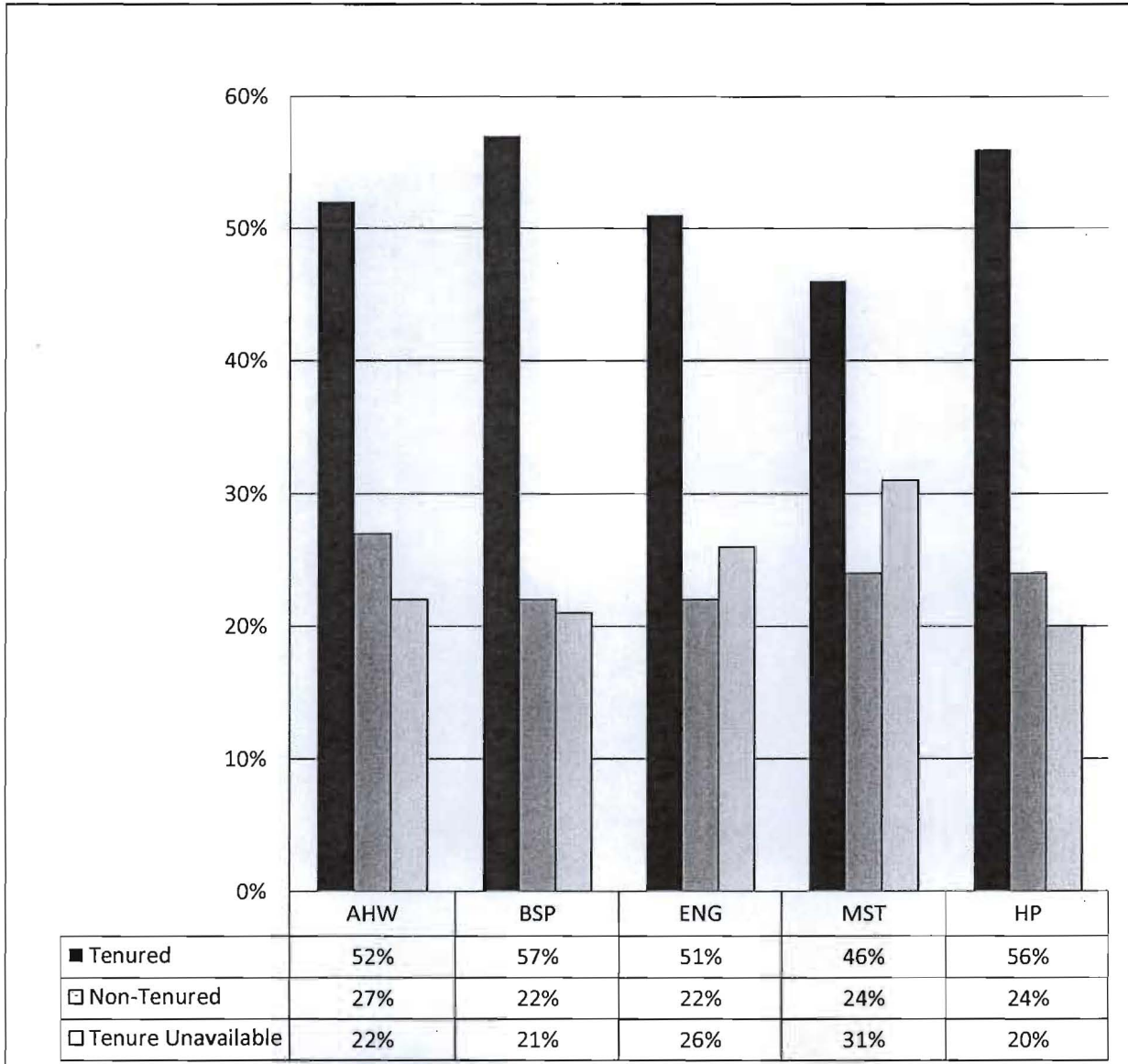
DIVISIONS	Tenured	Non-Tenured	Tenure Not Available*	Faculty Total
Arts, Humanities, and Wellness				
Communication	4	5	3	12
History & Geography	4	2	2	8
World Languages & Cultures	3	3	3	9
Performing Arts	5	2	2	9
Philosophy & Religion	4	2	1	7
Visual Arts	5	2	2	9
Wellness & Exercise Science	8	1	1	10
DIVISION TOTAL	33	17	14	64
Business, Social Science, and Public Service				
Business, Accounting, & Finance	8	4	3	15
Computer Informatics	1	1	0	2
Education	1	1	1	3
Hospitality & Restaurant Management	4	0	1	5
Information Technology	6	0	1	7
Legal & Related Studies	2	0	1	3
Public Service	2	2	0	4
Social Sciences	12	6	6	24
DIVISION TOTAL	36	14	13	63
English				
American Language Program	14	0	2	16
ALP Speech	3	1	1	5
Composition & Literature	10	10	7	27
English Basic Skills	12	6	10	28
DIVISION TOTAL	39	17	20	76
Health Professions				
Allied Health	0	0	1	1
Dental Hygiene	2	2	2	6
Medical Office Technology	1	0	0	1
Nursing	12	5	3	20
Radiography	1	1	1	3
Radiation Therapy	1	0	1	2
Respiratory Therapy	2	1	0	3
Diagnostic Medical Sonography	2	1	0	3
Surgical Technology	2	0	1	3
Veterinary Technology	2	1	0	3
DIVISION TOTAL	25	11	9	45
Math, Science, and Technology				
Biology & Horticulture	14	2	7	23
College Mathematics	11	2	3	13
Developmental Mathematics	4	9	13	26
Industrial & Design Technology	1	2	1	4
Physical Science	9	5	2	16
DIVISION TOTAL	39	20	26	85
Total Teaching Faculty	172	79	82	333
Library & Learning Resources Center	9	1	2	12
Total Instructional Faculty	181	80	84	345
Student Services	20	3	0	23
Community and Cultural Affairs	1	0	0	1
TOTAL	202	83	84	369

Note: Faculty on released time are included in the division of their primary academic affiliation.

Tenure is not available to lecturers.

Source: HR FCLTY 2009

BERGEN COMMUNITY COLLEGE
Full-Time Faculty
by Tenure and Division
(represented as percent)
Fall 2009



AHW: Division of Arts, Humanities, & Wellness
BSP: Division of Business, Math, & Social Sciences
ENG: Division of English
MST: Division of Mathematics, Science, & Technology
HP: Division of Health Professions

BERGEN COMMUNITY COLLEGE
Full-Time Faculty
Highest Degree by Division and Gender
Fall 2009

DIVISIONS	Ph.D Level*	Master's**	Bachelor's	Other***	Total
Arts, Humanities, and Wellness					
Communication	1	11	0	0	12
History & Geography	3	5	0	0	8
World Languages & Cultures	1	8	0	0	9
Performing Arts	3	6	0	0	9
Philosophy & Religion	3	4	0	0	7
Visual Arts	2	7	0	0	9
Wellness & Exercise Science	0	10	0	0	10
DIVISION TOTAL	13	51	0	0	64
Business, Social Science, and Public Service					
Business, Accounting, & Finance	5	10	0	0	15
Computer Informatics	0	2	0	0	2
Education	1	2	0	0	3
Hospitality & Restaurant Management	1	4	0	0	5
Information Technology	1	6	0	0	7
Legal & Related Studies	3	0	0	0	3
Public Service	0	3	1	0	4
Social Sciences	10	14	0	0	24
DIVISION TOTAL	21	41	1	0	63
English					
American Language Program	3	13	0	0	16
ALP Speech	0	5	0	0	5
Composition & Literature	11	16	0	0	27
English Basic Skills	8	20	0	0	28
DIVISION TOTAL	22	54	0	0	76
Health Professions					
Allied Health	0	0	0	1	1
Dental Hygiene	0	6	0	0	6
Diagnostic Medical Sonography	0	2	0	1	3
Medical Office Technology	0	1	0	0	1
Nursing	1	19	0	0	20
Radiography	0	3	0	0	3
Radiation Therapy	0	1	0	1	2
Respiratory Therapy	1	1	1	0	3
Surgical Technology	0	0	1	2	3
Veterinary Technology	1	0	1	1	3
DIVISION TOTAL	3	33	3	6	45
Math, Science, and Technology					
Biology & Horticulture	11	12	0	0	23
College Mathematics	6	10	0	0	16
Developmental Mathematics	0	26	0	0	26
Industrial & Design Technology	0	4	0	0	4
Physical Science	10	6	0	0	16
DIVISION TOTAL	27	58	0	0	85
Total Teaching Faculty					
	86	237	4	6	333
Library & Learning Resources Center	0	12	0	0	12
Total Instructional Faculty					
	86	249	4	6	345
Student Services	1	22	0	0	23
Community and Cultural Affairs	0	1	0	0	1
TOTAL	87	272	4	6	369

Note: Faculty on released time are included in the division of their primary academic affiliation.

*Includes MD and legal degrees

**Includes completed Ph.D coursework without dissertation (ABD)

***Includes Associate's-level and occupational degrees

Source: Division Offices

BERGEN COMMUNITY COLLEGE
Adjunct Faculty
Gender and Race/Ethnicity
Fall 2009

Adjunct Faculty: Gender and Race/Ethnicity

Race	Male	Female	Total
Black	9	16	25
Asian	14	25	39
Hispanic	18	30	48
American Indian	0	1	1
White	245	247	492
Unknown	9	16	25
TOTAL	295	335	630

Adjunct Faculty: Highest Degree Earned

Degree	Male	Female	Total
Doctorate	64	36	100
Master's	200	212	412
Bachelor's	19	39	58
Associate	10	34	44
Other	2	14	16
TOTAL	295	335	630

Source: BCC Human Resources

Financial Data

HIGHLIGHTS

- Total revenue increased by 10% from FY 2009 to FY 2010. The revenue sources were as follows:

- State of New Jersey: 11.7%
- Bergen County: 16.9%
- Tuition and Fees: 53.9%
- Student Aid and Grants: 13.0%
- Other: 4.5%

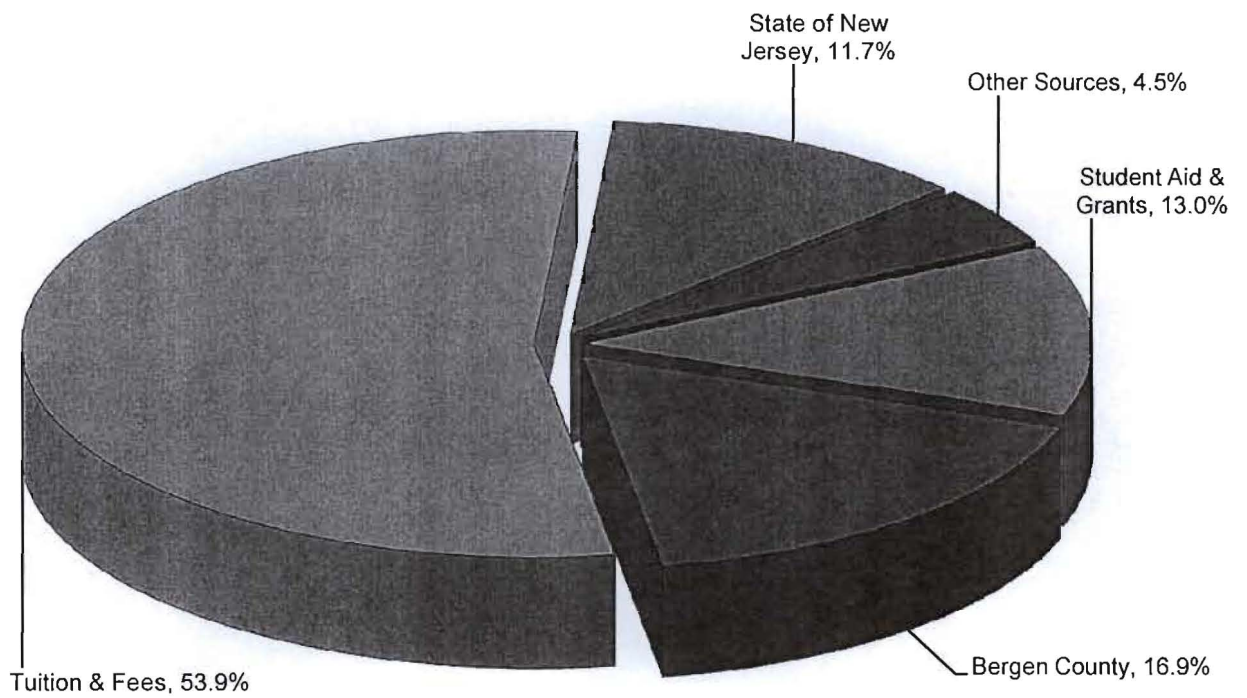
- Student contributions through tuition & fees increased by 3% from FY2009 to FY 2010.
- Total expenditures increased by 16% from FY 2009 to FY 2010.

BERGEN COMMUNITY COLLEGE
Current Funds Budget, Revenues
Fiscal Years 2009 and 2010

REVENUES	Budgeted 7/1/08-6/30/09	Percent of Total	Budgeted 7/1/09-6/30/10	Percent of Total
Unrestricted:				
Tuition	40,068,490	39.8%	45,816,670	41.5%
Student Fees	11,172,190	11.1%	13,711,390	12.4%
Government Appropriations:				
State	13,308,420	13.2%	12,845,770	11.6%
County	18,107,150	18.0%	18,650,360	16.9%
Other New Jersey Counties	115,000	0.1%	130,000	0.1%
Sales & Services, Auxiliary Enterprise	220,000	0.2%	257,060	0.2%
Other Sources	2,097,790	2.1%	1,826,700	1.7%
Fund Balance Appropriation	3,478,710	3.5%	2,894,700	2.6%
TOTAL UNRESTRICTED	88,567,750	88.1%	96,132,650	87.0%
Restricted:				
Student Aid and Other Grants	12,000,000	11.9%	14,290,000	13.0%
TOTAL CURRENT FUNDS REVENUES	100,567,750	100.0%	110,422,650	100.0%

Source: Bergen Community College Office of Budget and Finance

**BERGEN COMMUNITY COLLEGE
Current Funds Budget, Revenues
Fiscal Year 2010**



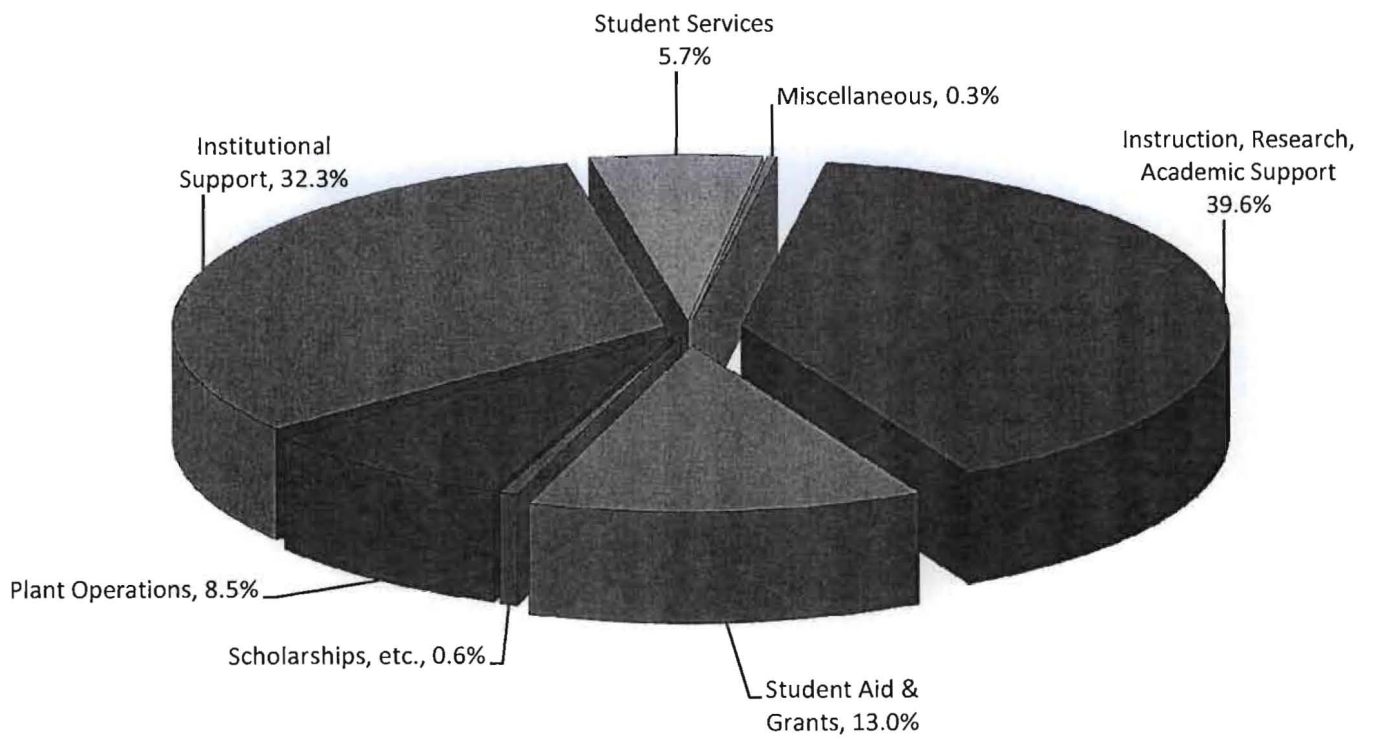
Source: Bergen Community College Office of Budget and Finance

BERGEN COMMUNITY COLLEGE
Current Funds Budget, Expenditures
Fiscal Years 2009 and 2010

EXPENDITURES & TRANSFERS	Budgeted 7/1/08-6/30/09	Percent of Total	Budgeted 7/1/09-6/30/10	Percent of Total
Educational and General:				
Instruction	33,690,480	35.6%	36,810,620	33.4%
Academic Support	5,171,300	5.5%	6,896,770	6.2%
Student Services	5,949,100	6.3%	6,322,340	5.7%
Institutional Support	29,436,880	31.1%	35,660,720	32.3%
Operation & Maintenance of Plant	8,291,330	8.8%	9,437,090	8.5%
Scholarships and Fellowships	530,000	0.6%	700,000	0.6%
EDUC. & GENERAL EXPENDITURE	83,069,090	87.7%	95,827,540	86.7%
Mandatory Transfers:				
Principal & Interest	77,500	0.1%	0	0.0%
TOTAL EDUCATIONAL & GENERAL	83,146,590	87.8%	95,827,540	86.7%
Auxiliary Enterprise:				
Expenditures	263,940	0.3%	305,110	0.3%
TOTAL CURRENT UNRESTRICTED	83,410,530	88.1%	96,132,650	87.0%
Restricted Expenditures:				
Student Aid and Other grants	11,330,000	11.9%	14,290,000	13.0%
TOTAL CURRENT FUNDS EXPENDITURES & TRANSFERS	94,740,530	100.0%	110,422,650	100.0%

Source: Bergen Community College Office of Budget and Finance

BERGEN COMMUNITY COLLEGE
Current Funds Budget, Expenditures
Fiscal Year 2010



Source: Bergen Community College Office of Budget and Finance

BERGEN COMMUNITY COLLEGE
Student Financial Aid
Recipients and Amount of Award
Fiscal Year 2009

	Full-Time Students		Part-Time Students		Total Students**	
	Number*	Amount(\$)**	Number*	Amount(\$)**	Number*	Amount(\$)**
Federal Programs						
Pell Grant	2,924	9,730,550	863	1,474,914	3,787	11,205,464
College Work Study	309	330,000	45	45,000	354	375,000
SEOG	1,894	318,550	457	47,475	2,351	366,025
Stafford Loans-Subsidized	743	2,093,891	249	584,693	992	2,678,584
Stafford Loans-Unsubsidized	764	2,259,680	321	928,512	1,085	3,188,192
PLUS Loans	33	135,951	1	1,223	34	137,174
State Programs						
Tuition Aid Grant (TAG)^	2,081	3,567,871	453	478,264	2,534	4,046,135
Educational Opportunity Fund	341	303,450	40	15,766	381	319,216
Distinguished Scholars	7	4,185	-	-	7	4,185
Urban Scholars	18	14,880	-	-	18	14,880
New Jersey Class Loans	41	136,995	-	-	41	136,995
New Jersey STARS	268	671,660	-	-	268	671,660
Total Aid (amounts)		19,567,663		3,575,847		23,143,510

* Not an unduplicated count. Many students request and receive more than one kind of financial aid.

** Totals include Non-County Residents.

*** Some larger amounts rounded to nearest thousand.

^ Part-time TAG amount includes funds available to part-time EOF students as well as to other part-time students.

Source: IPEDS Student Financial Aid Report, BCC Office of Financial Aid