



Organizational Charts
July 12, 2017

BERGEN COMMUNITY COLLEGE

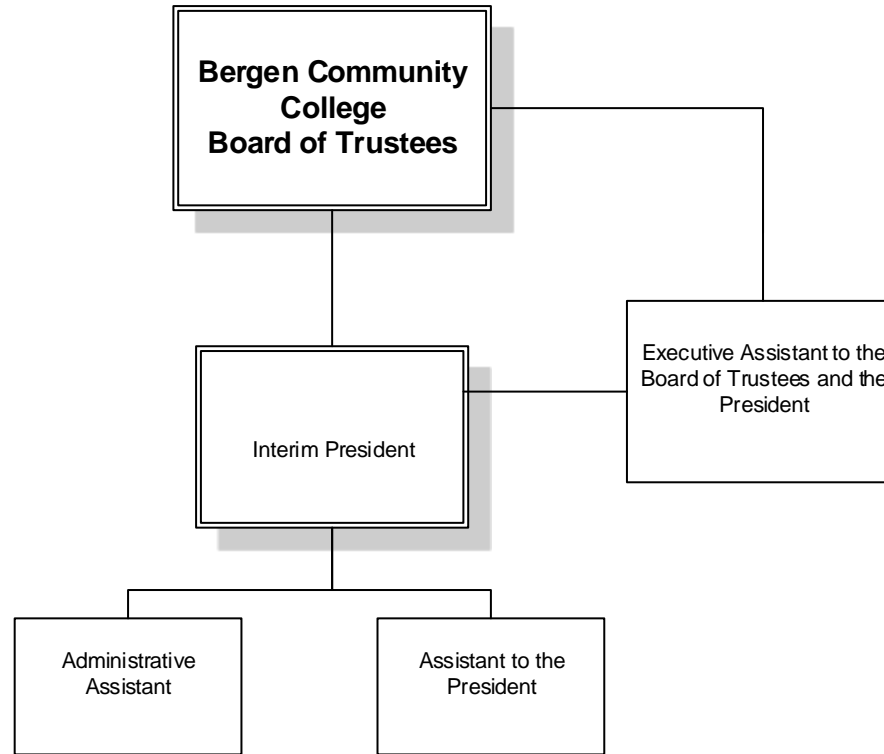
Organizational Charts

Table of Contents

Board of Trustees/President's Office.....	Page 1
Direct Reports to the President.....	Page 2
Executive Assistant to the President.....	Page 3
Academic Affairs.....	Page 4
Adjunct Administration.....	Page 9
Bergen Community College at the Meadowlands.....	Page 18
Business, Arts and Social Sciences	Page 6
Center for Innovation in Teaching and Learning.....	Page 13
Cerullo Learning Assistance Center.....	Page 14
Child Development Center.....	Page 15
Continuing Education, Corporate and Public Sector Training.....	Page 16
Health Professions.....	Page 7
Humanities	Page 5
Math, Science, and Technology	Page 8
Philip J. Ciarco Jr. Learning Center.....	Page 17
Sidney Silverman Library.....	Page 10
Student Support Services.....	Page 11
Career and Transfer Services and Counseling Center	Page 12
Bergen Community College Foundation.....	Page 19
Finance.....	Page 20
Purchasing and Services.....	Page 21
Financial Aid.....	Page 22
Human Resources.....	Page 23
Community and Cultural Affairs.....	Page 24
Public Relations.....	Page 25
Information Technologies.....	Page 26
Media Technologies.....	Page 27
Institutional Effectiveness.....	Page 30
Grants Administration.....	Page 31
Facilities Planning, Operations and Public Safety.....	Page 28
Physical Plant.....	Page 29
Student Affairs.....	Page 32
Enrollment Services.....	Page 33
Student Life and Conduct.....	Page 34

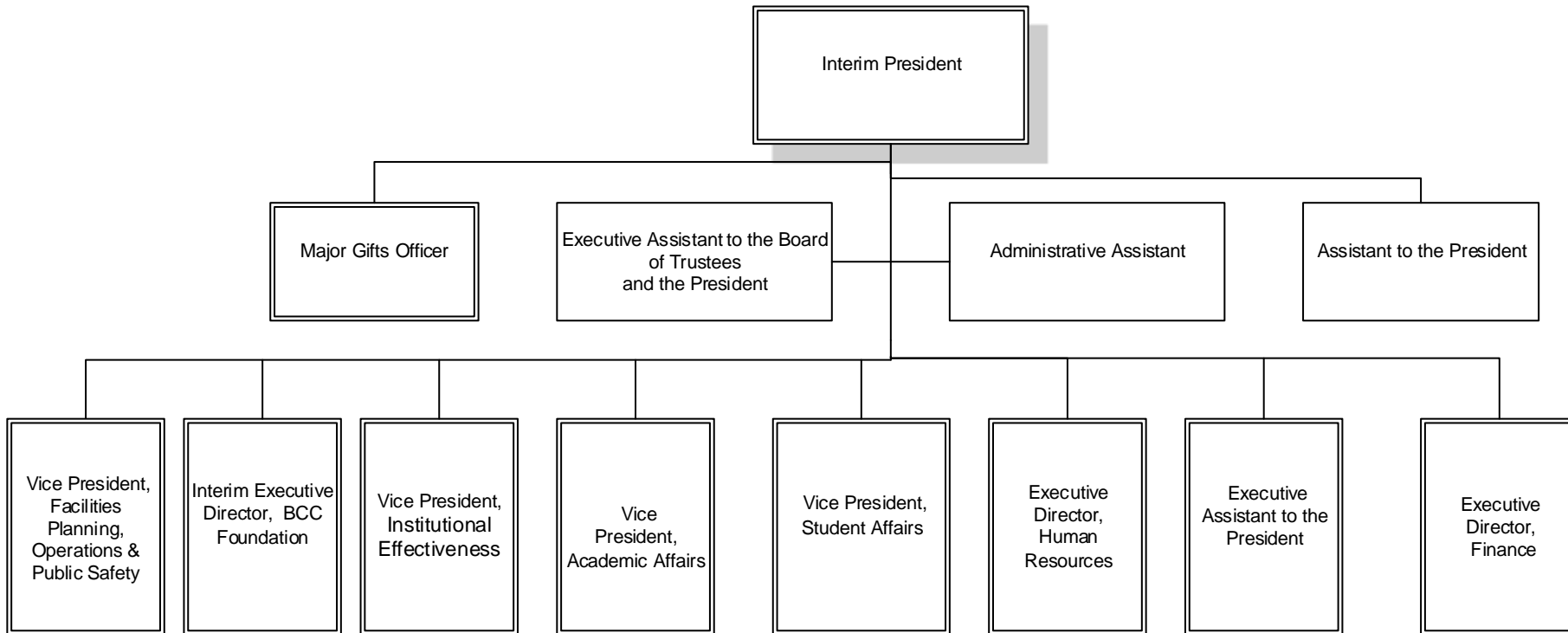
NOTE: VACANT (A) positions are actively recruiting, VACANT (Hold) are positions which the recruiting process has been put on hold, and VACANT are approved open positions which have not started the recruiting process.

BERGEN COMMUNITY COLLEGE
BOARD OF TRUSTEES/PRESIDENT'S OFFICE

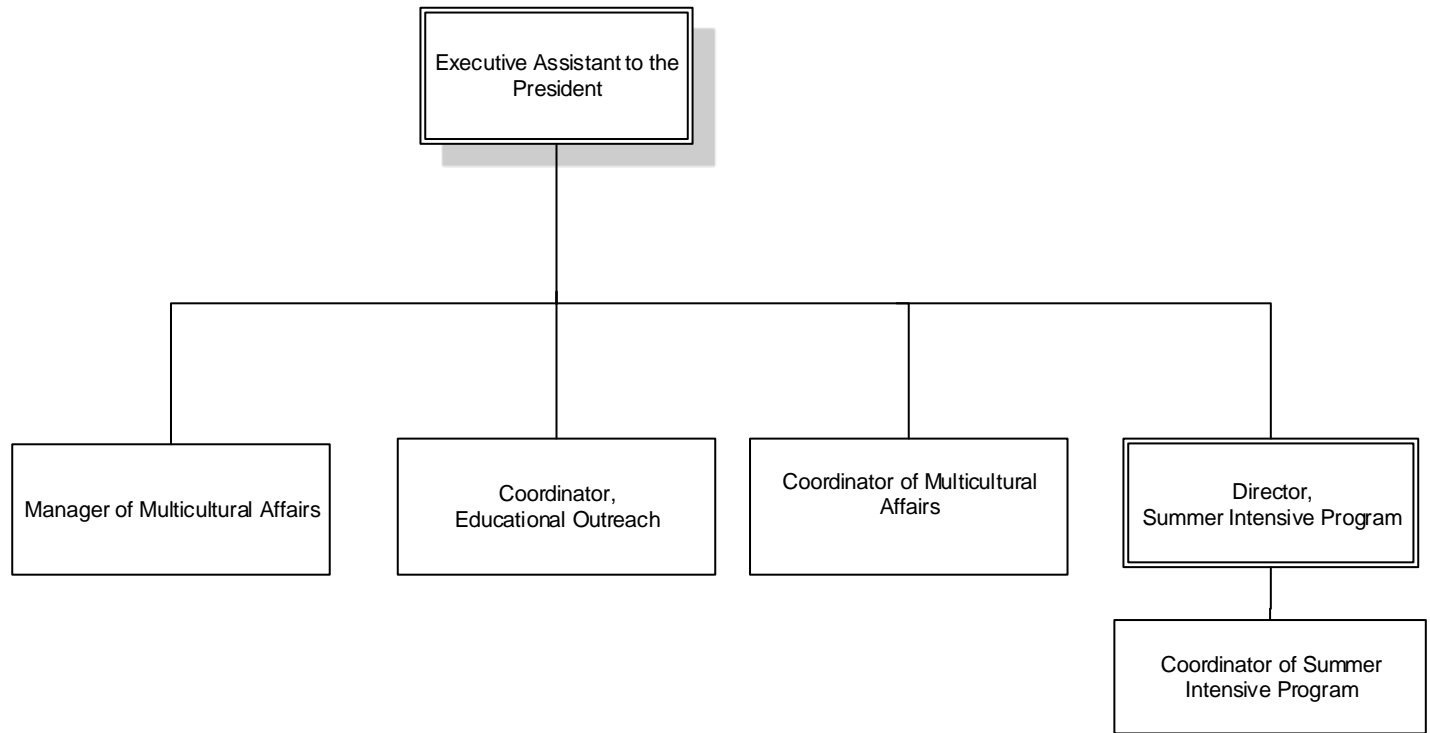


BERGEN COMMUNITY COLLEGE

DIRECT REPORTS TO THE PRESIDENT

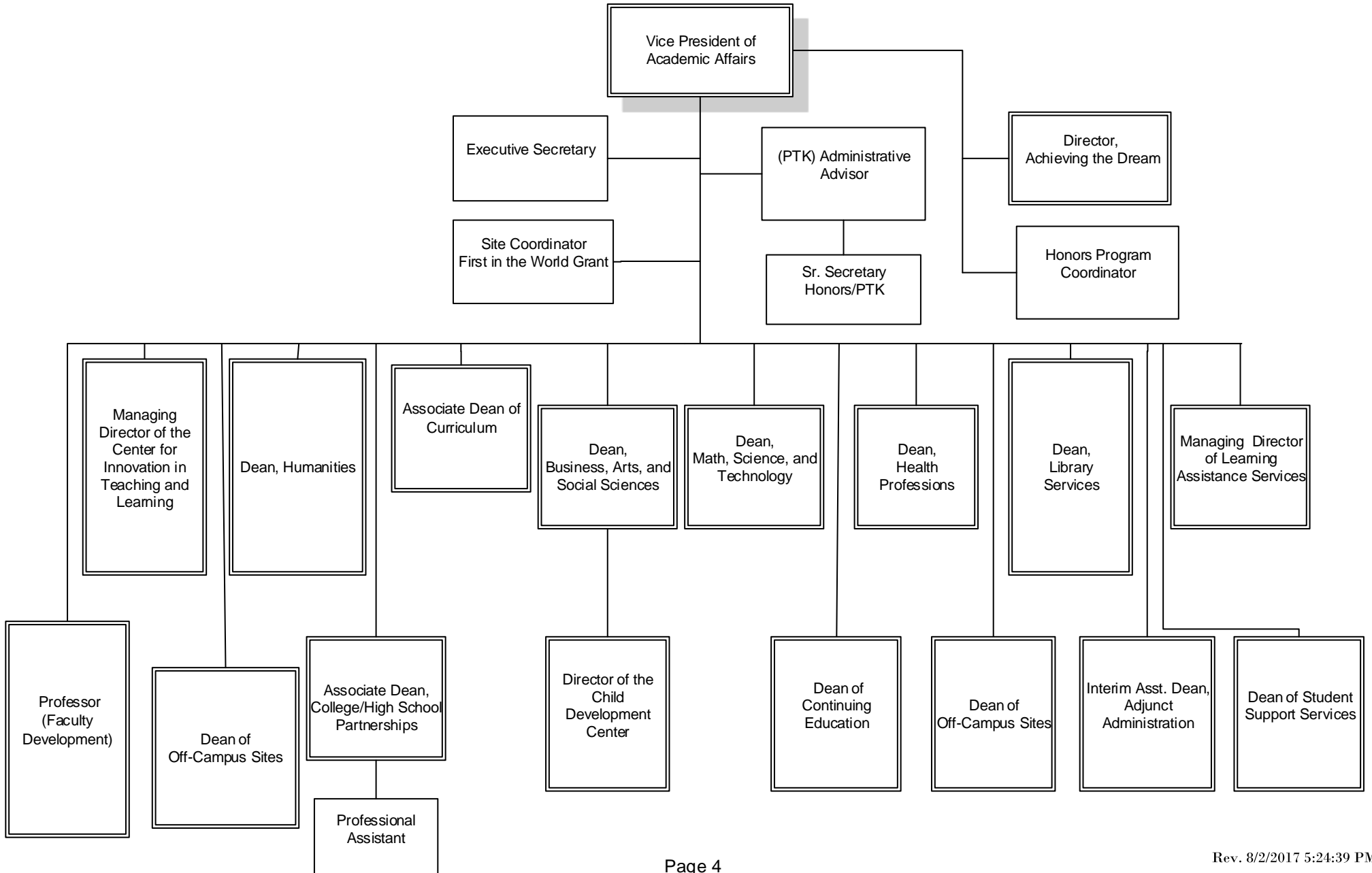


BERGEN COMMUNITY COLLEGE
EXECUTIVE ASSISTANT TO THE PRESIDENT



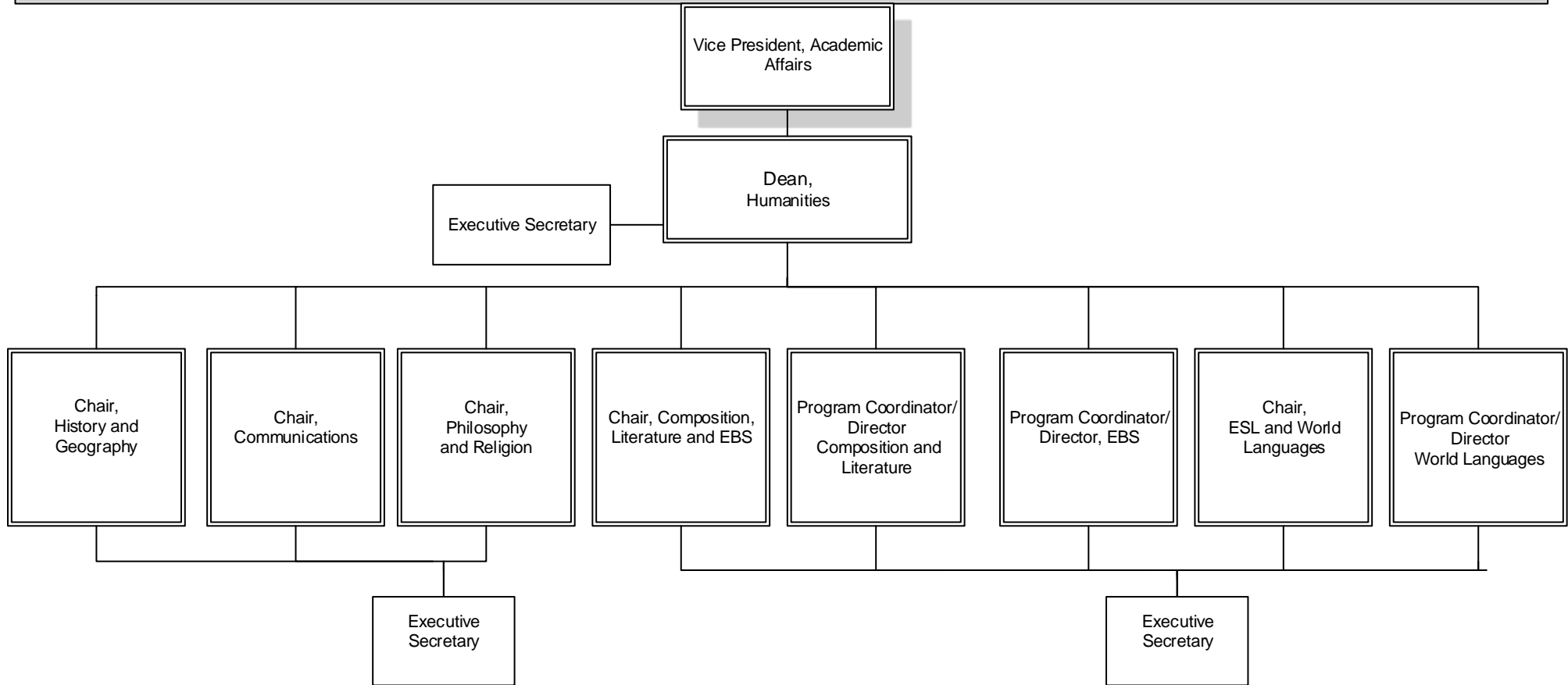
BERGEN COMMUNITY COLLEGE

ACADEMIC AFFAIRS



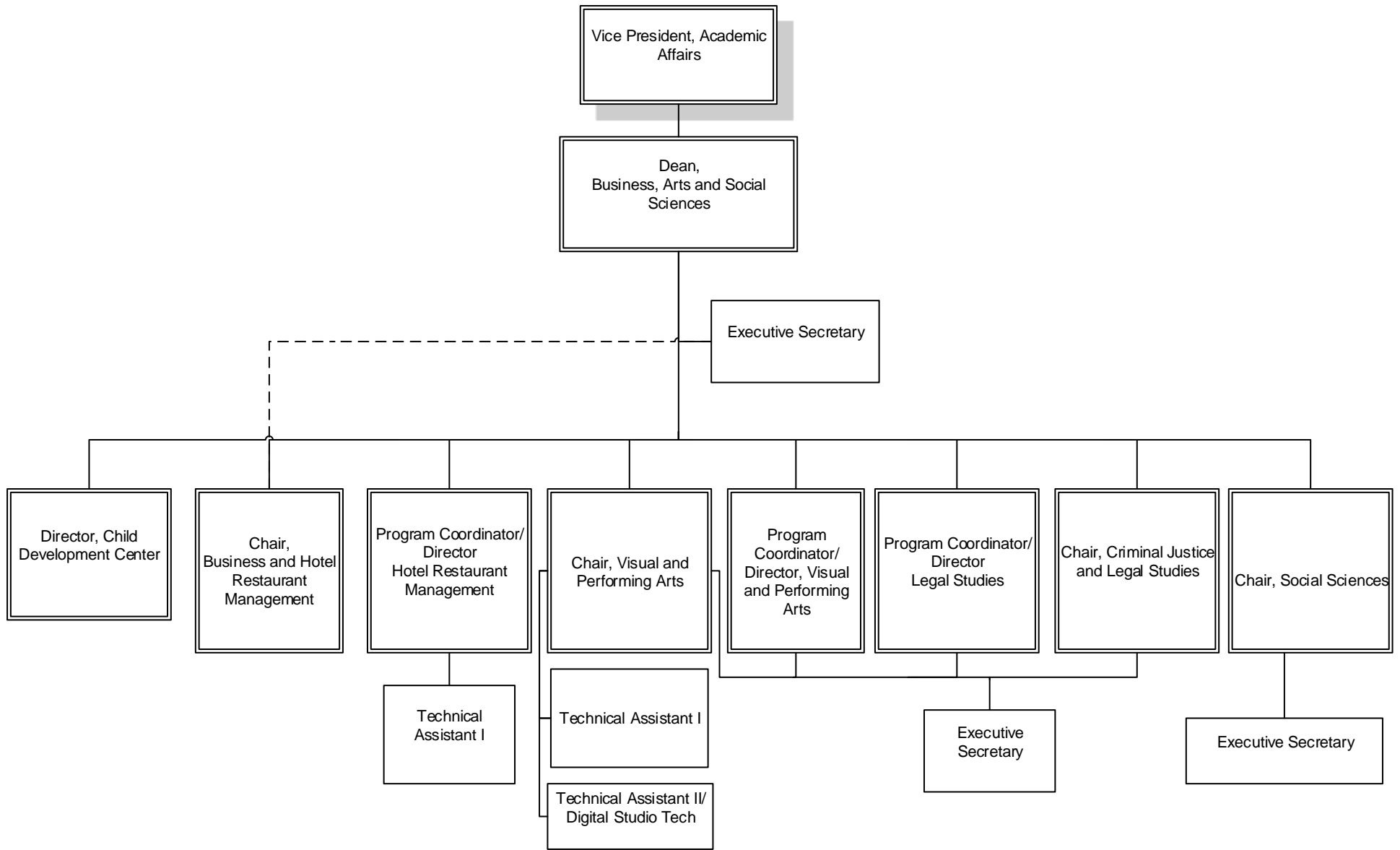
BERGEN COMMUNITY COLLEGE

HUMANITIES



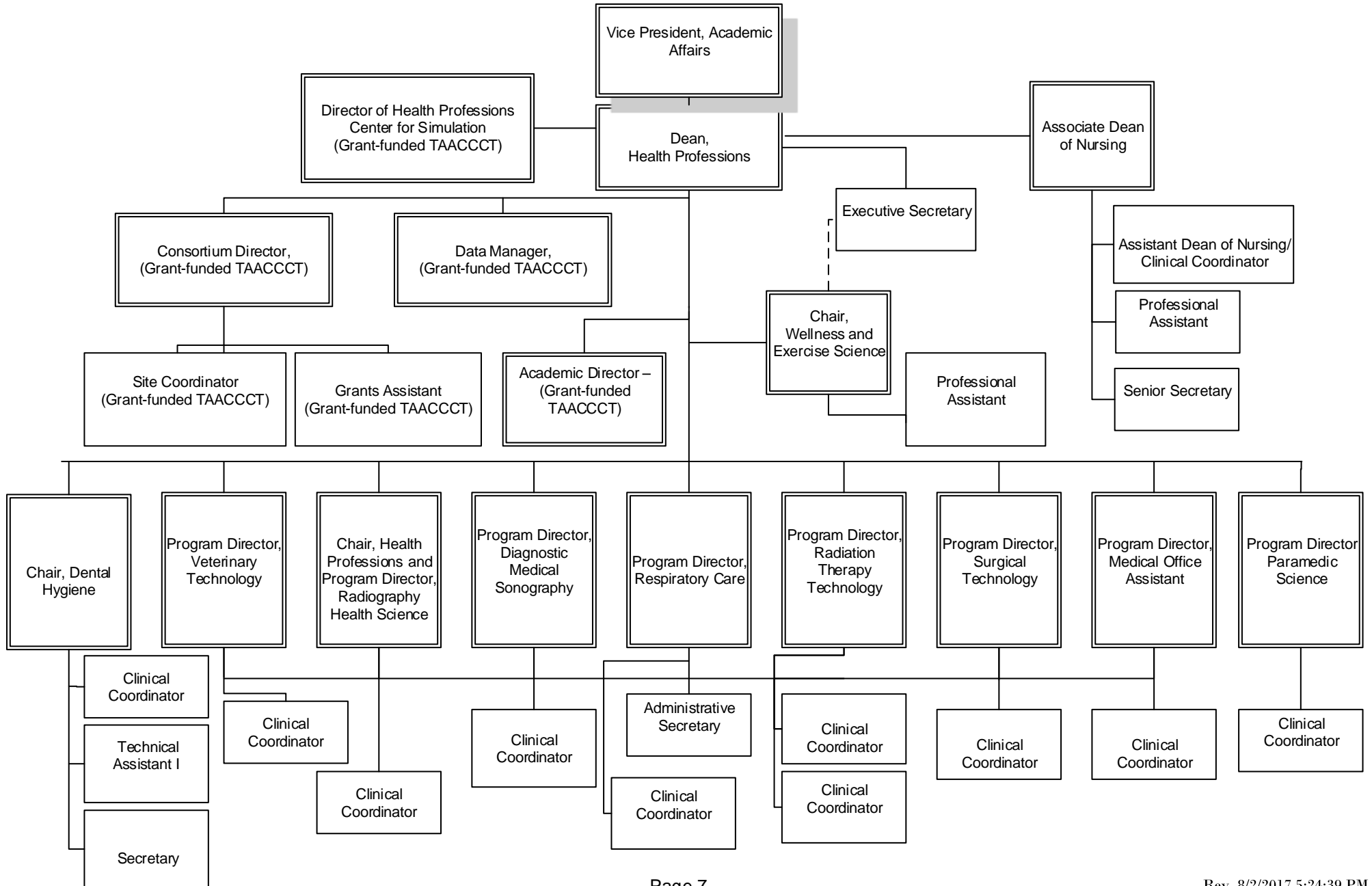
BERGEN COMMUNITY COLLEGE

BUSINESS, ARTS AND SOCIAL SCIENCES



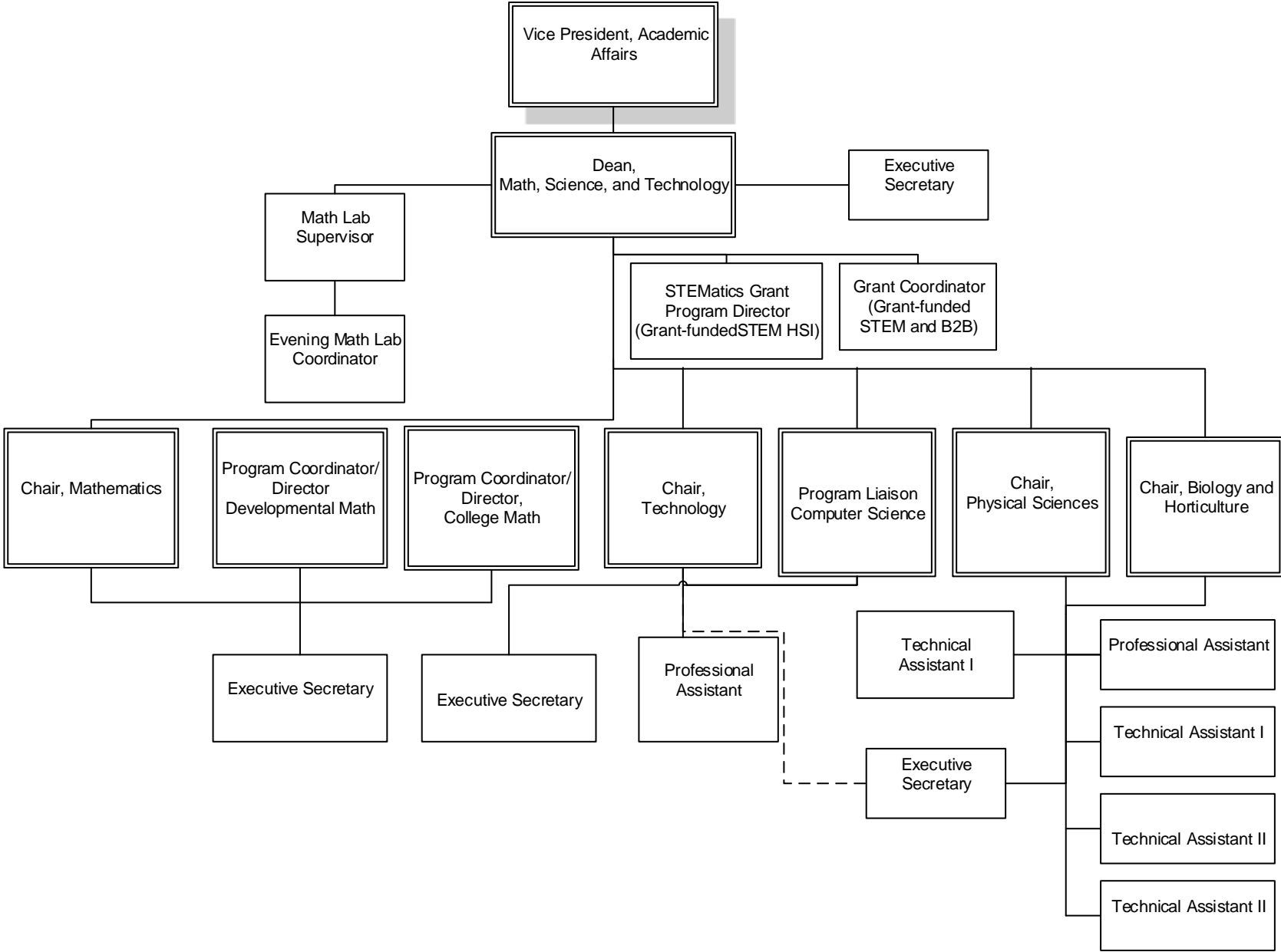
BERGEN COMMUNITY COLLEGE

HEALTH PROFESSIONS



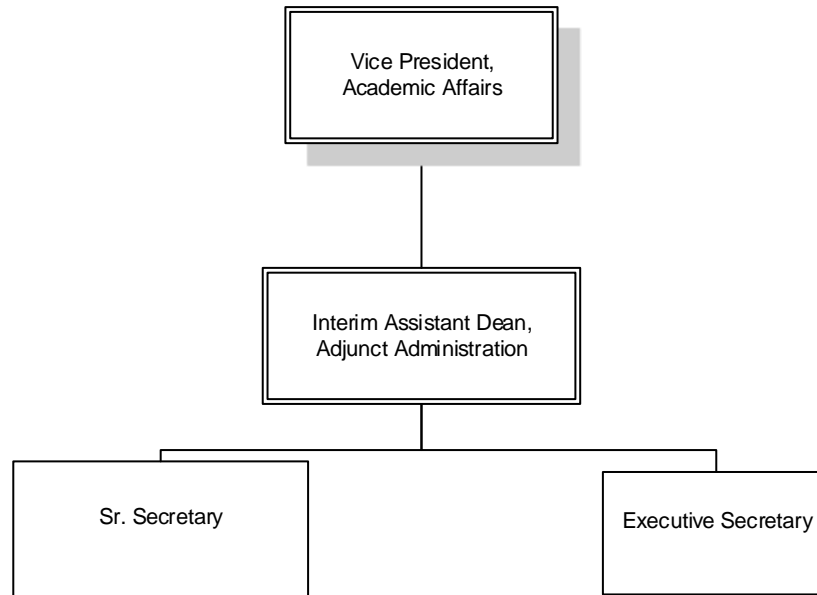
BERGEN COMMUNITY COLLEGE

MATH, SCIENCE, AND TECHNOLOGY



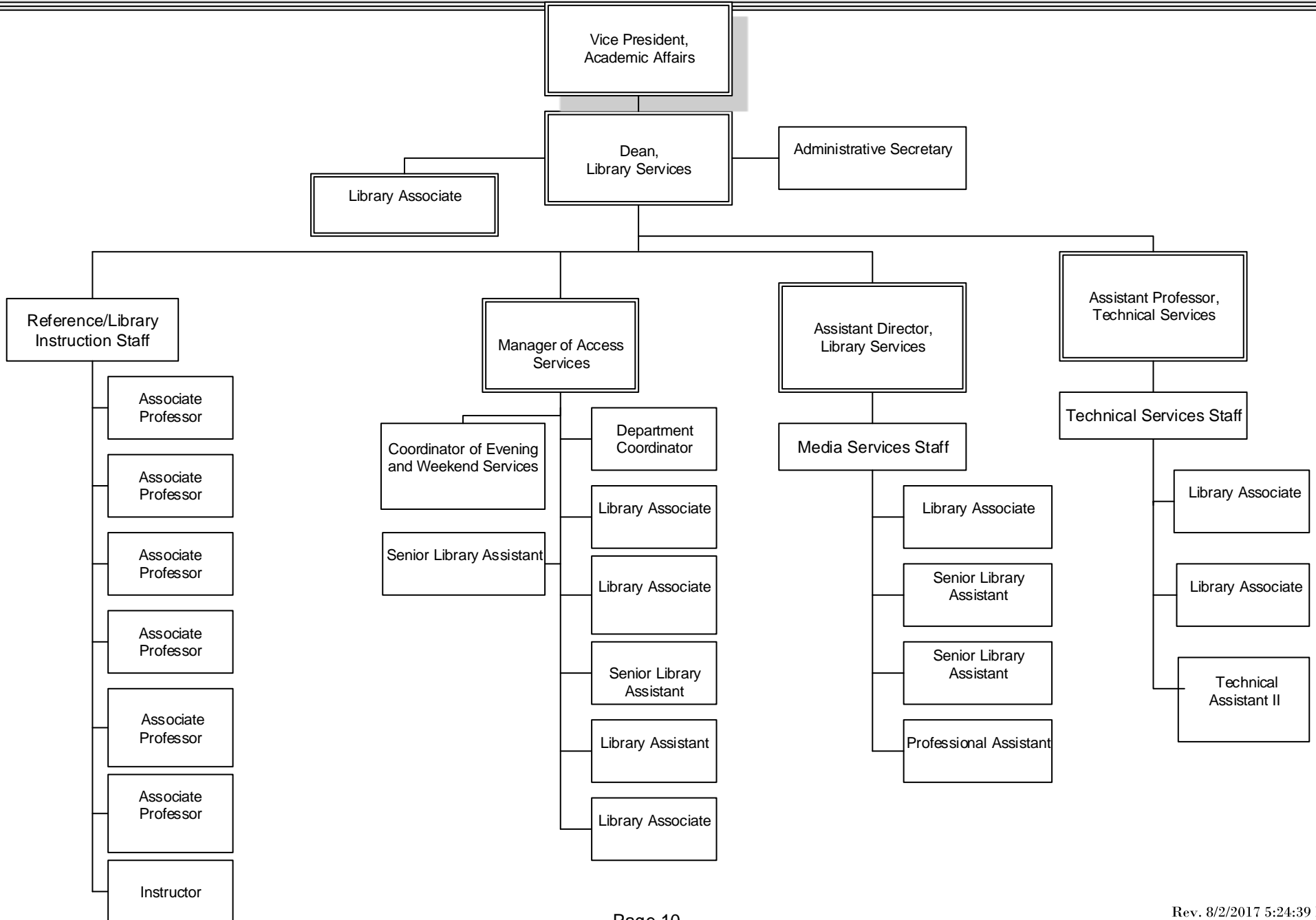
BERGEN COMMUNITY COLLEGE

ADJUNCT ADMINISTRATION



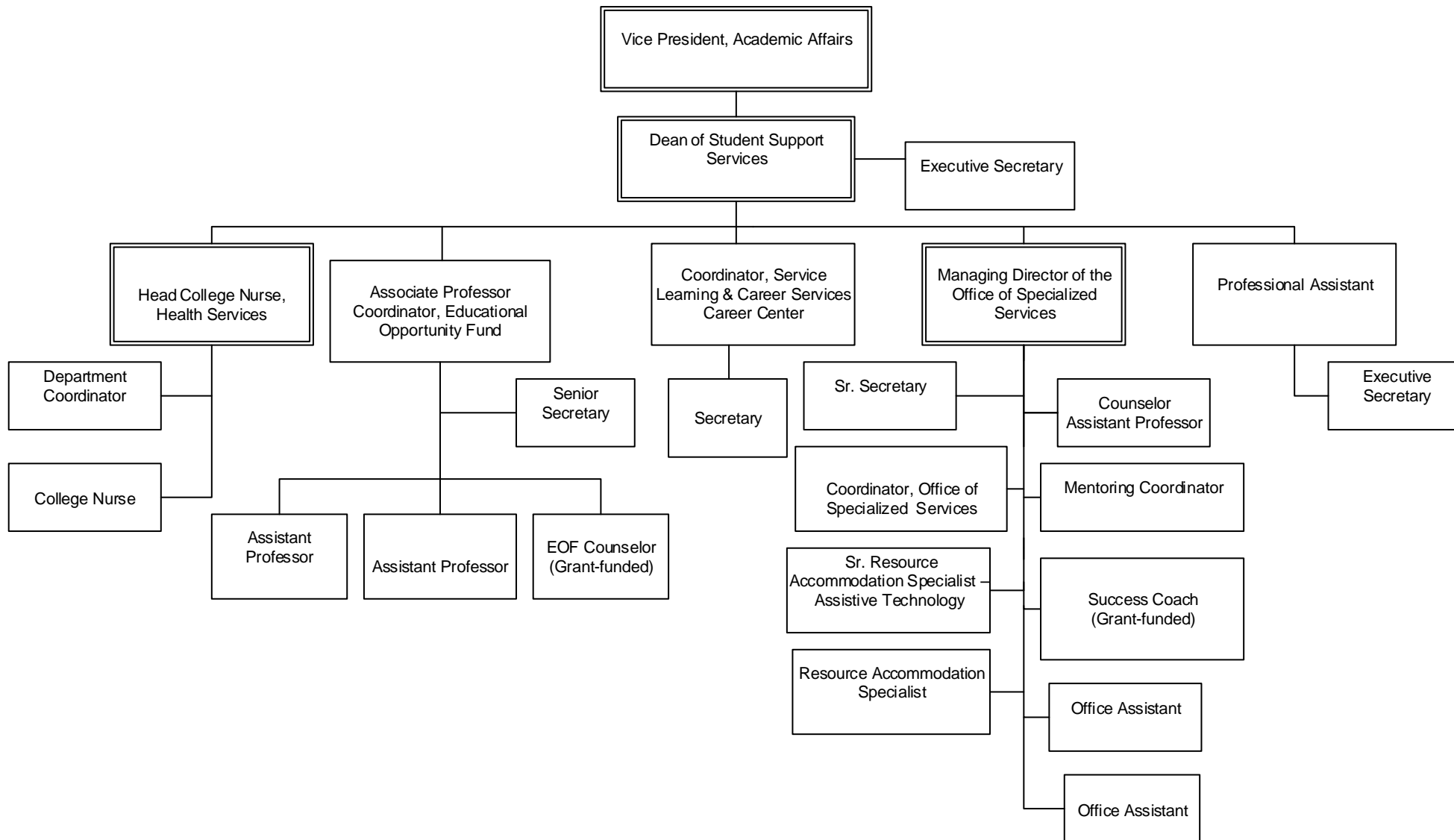
BERGEN COMMUNITY COLLEGE

SIDNEY SILVERMAN LIBRARY



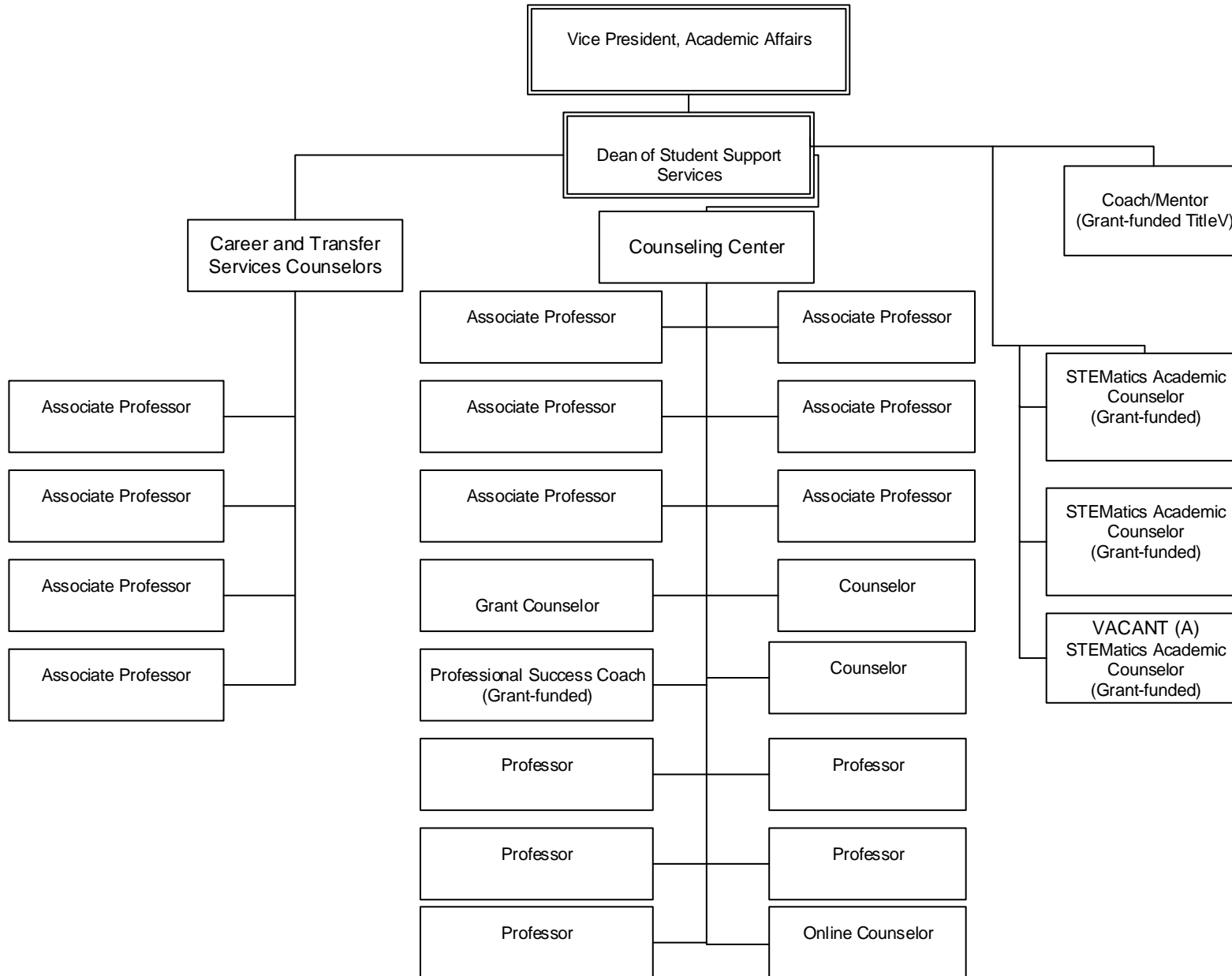
BERGEN COMMUNITY COLLEGE

STUDENT SUPPORT SERVICES

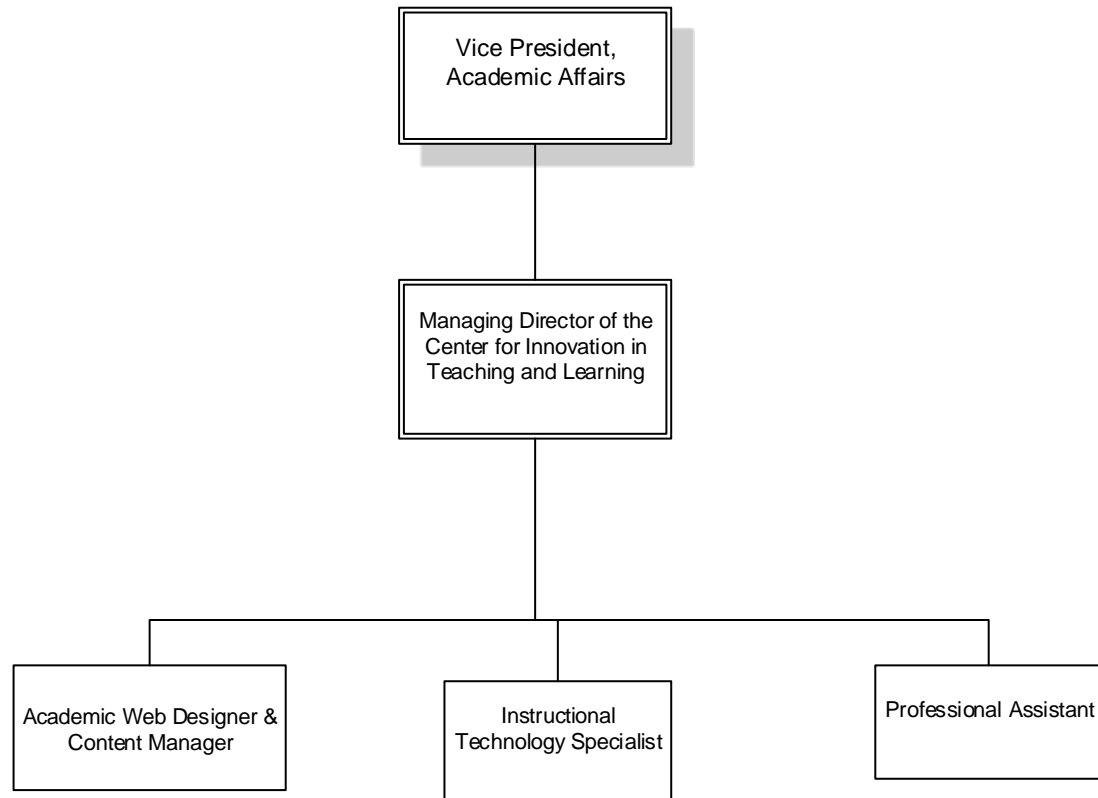


BERGEN COMMUNITY COLLEGE

CAREER AND TRANSFER SERVICES/COUNSELING CENTER

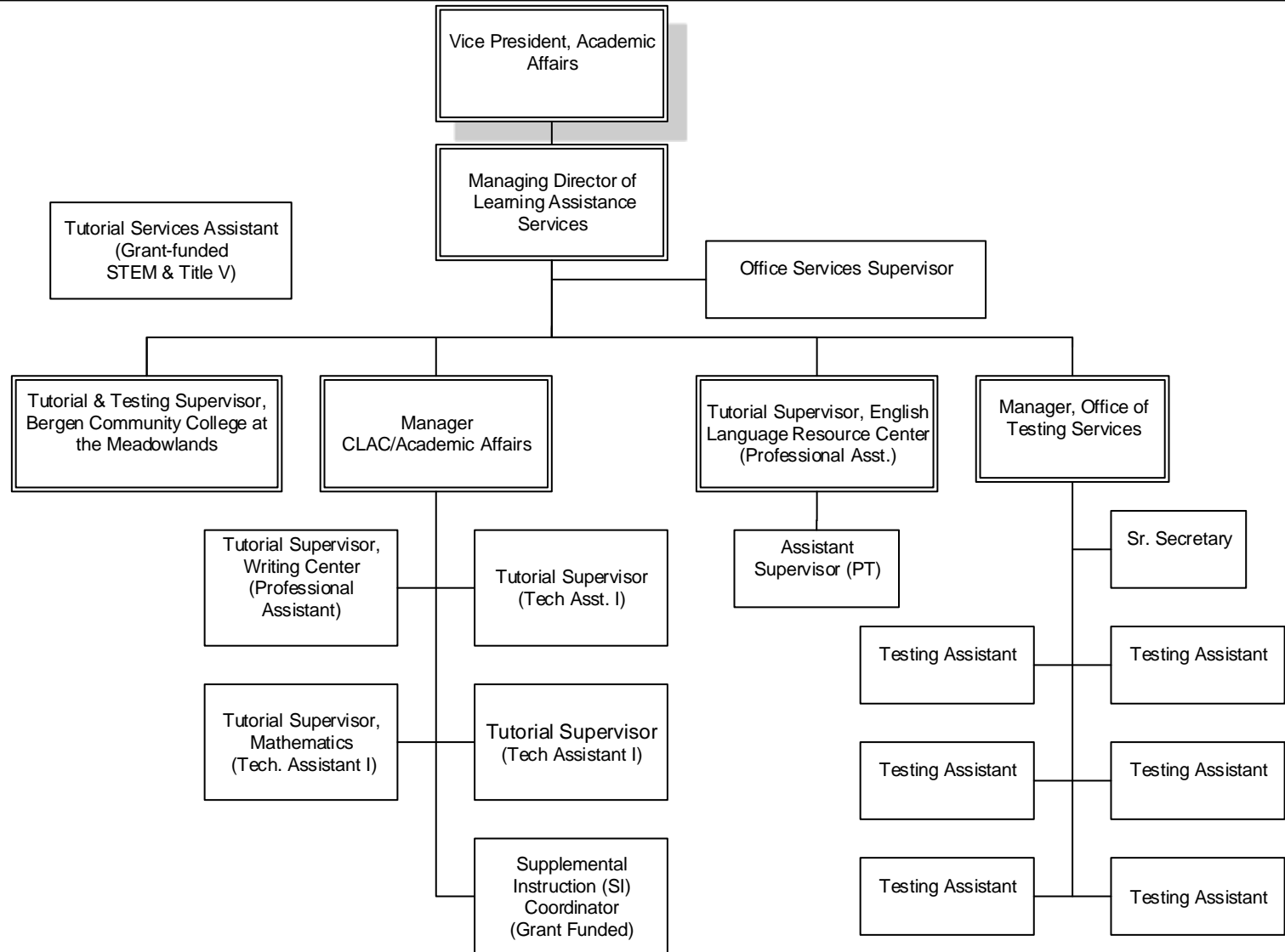


BERGEN COMMUNITY COLLEGE
CENTER FOR INNOVATION IN TEACHING AND LEARNING

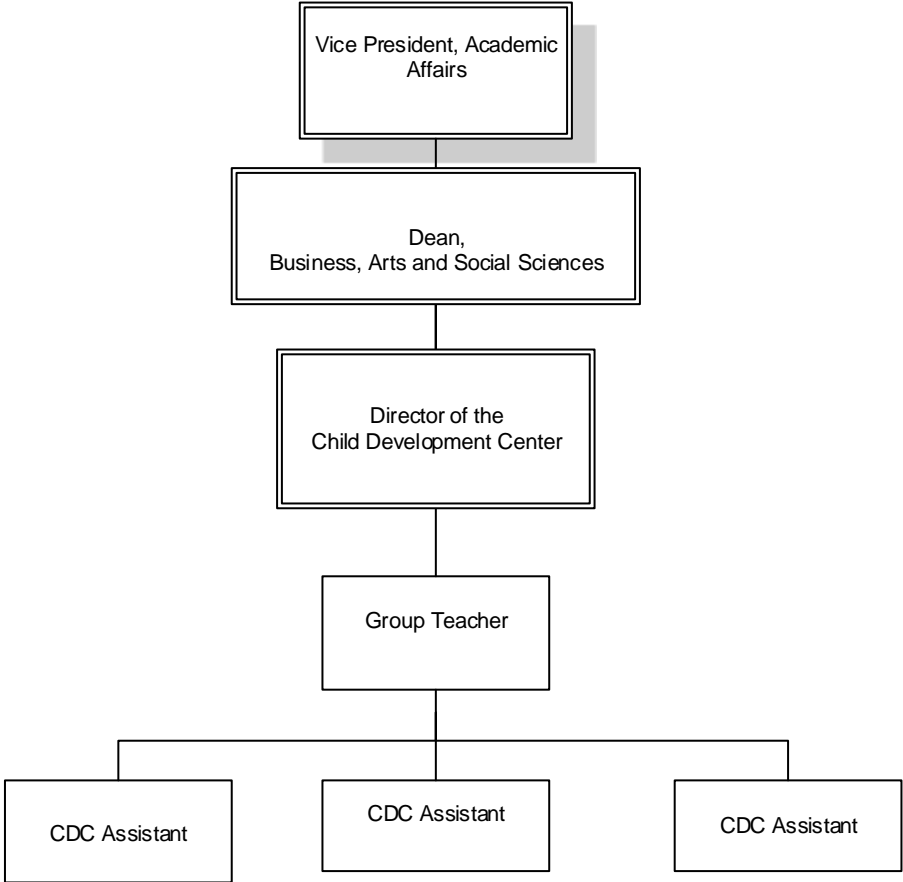


BERGEN COMMUNITY COLLEGE

CERULLO LEARNING ASSISTANCE CENTER

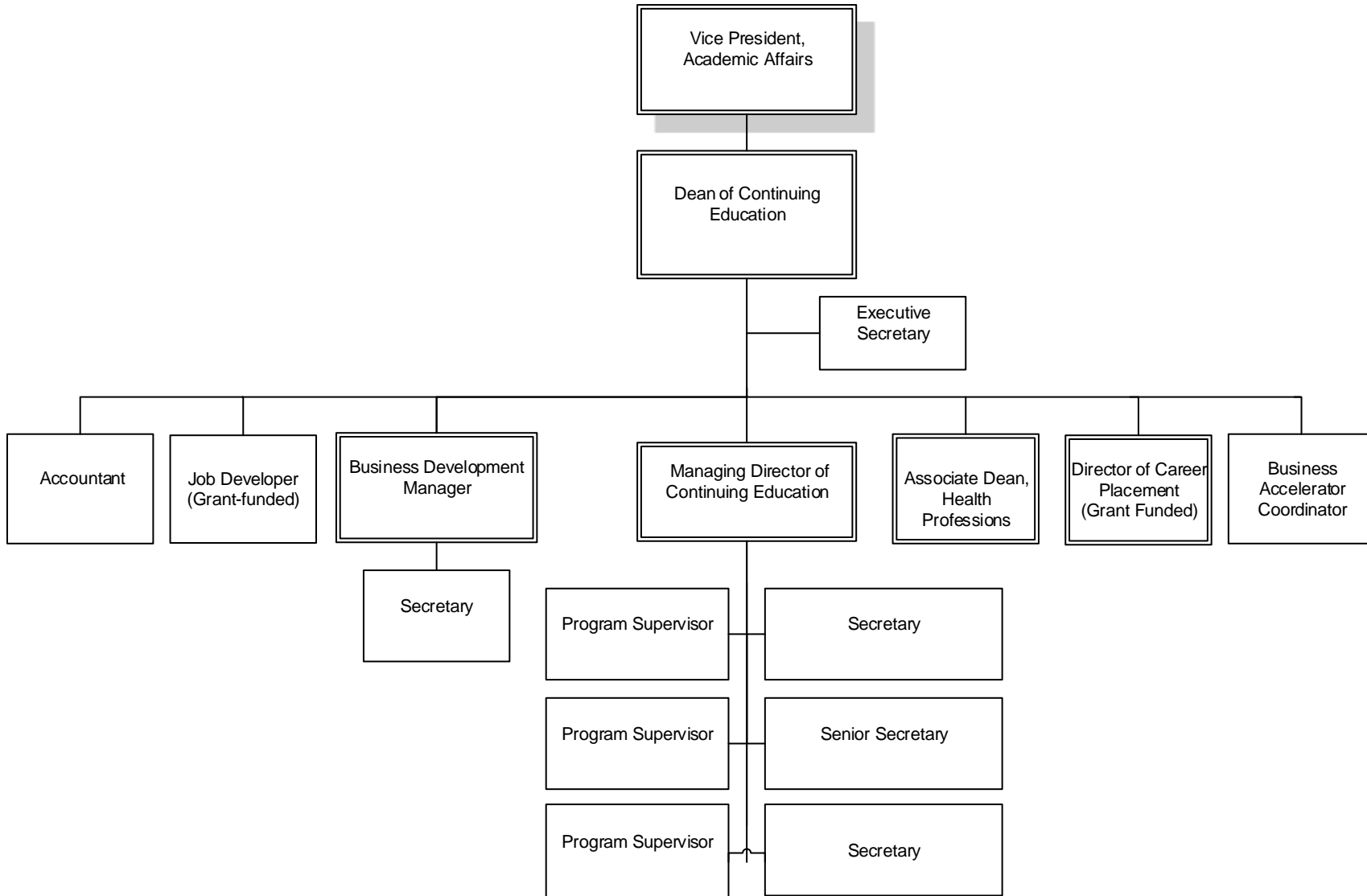


BERGEN COMMUNITY COLLEGE
CHILD DEVELOPMENT CENTER

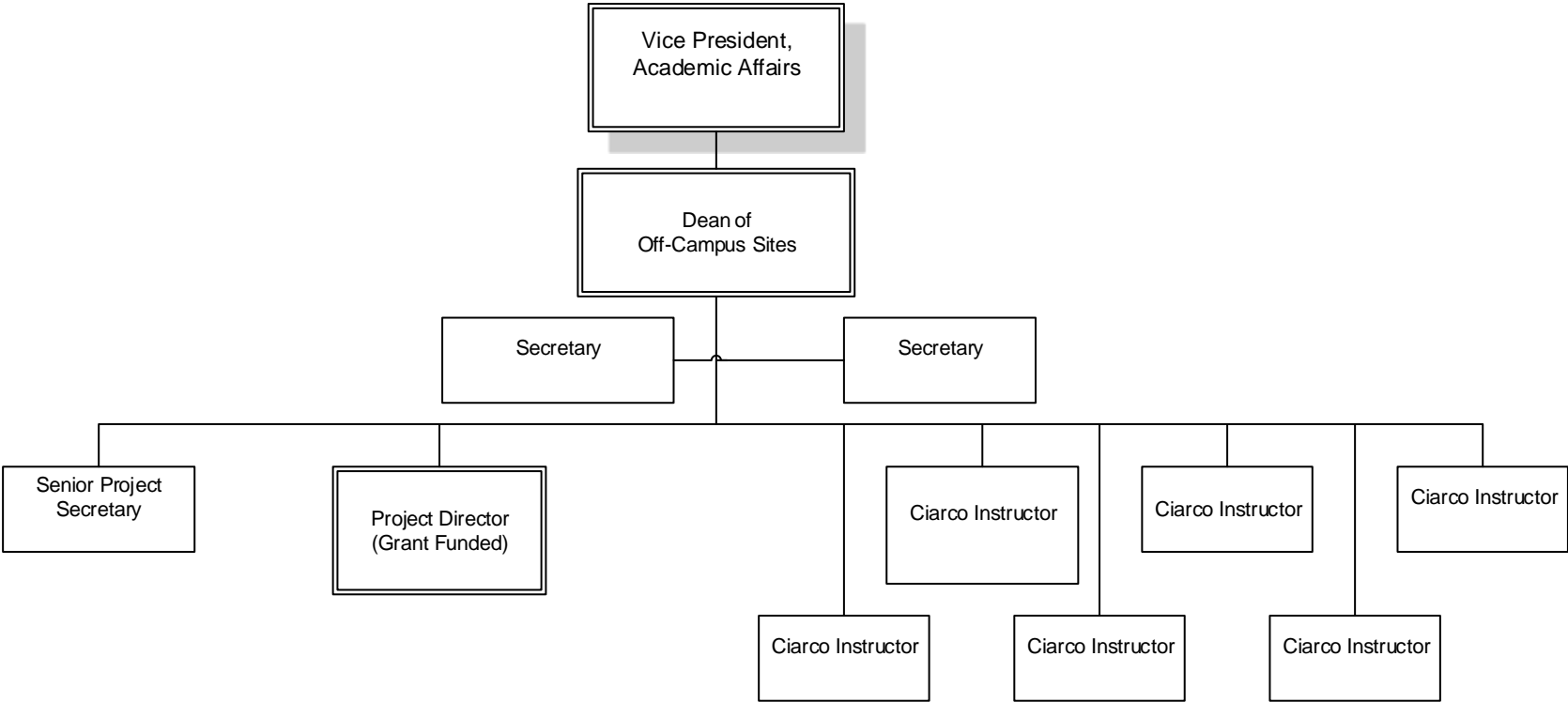


BERGEN COMMUNITY COLLEGE

CONTINUING EDUCATION (CORPORATE AND PUBLIC SECTOR TRAINING)

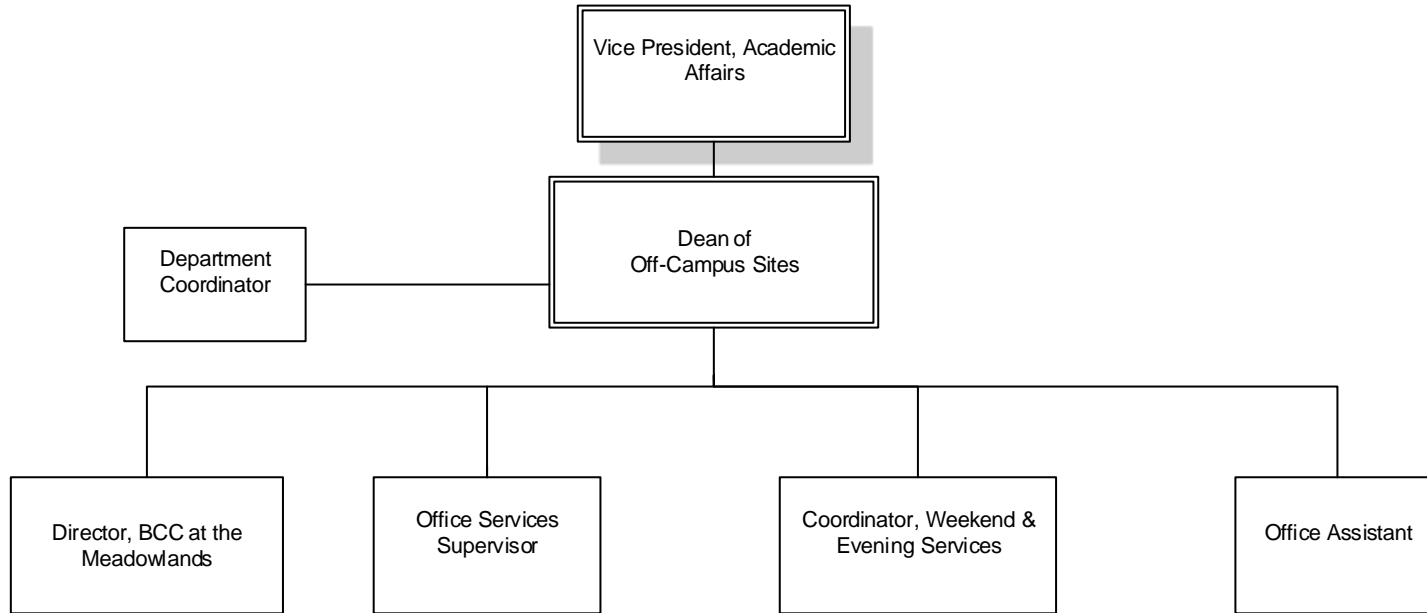


BERGEN COMMUNITY COLLEGE
PHILIP CIARCO JR. LEARNING CENTER

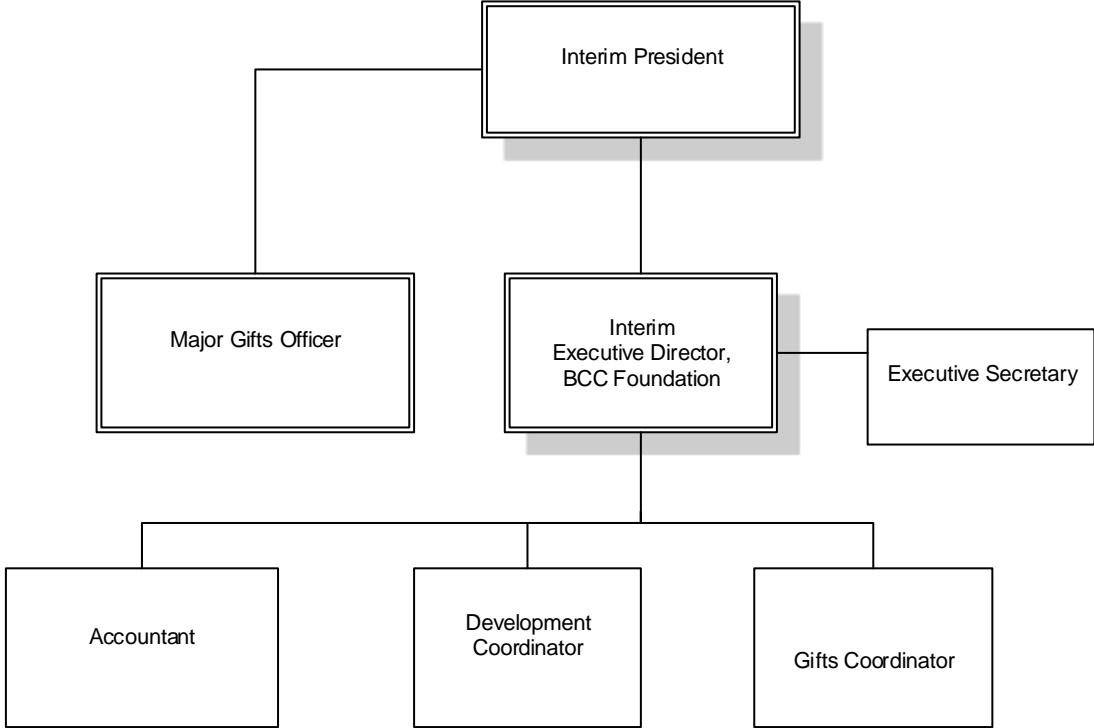


BERGEN COMMUNITY COLLEGE

BERGEN COMMUNITY COLLEGE AT THE MEADOWLANDS

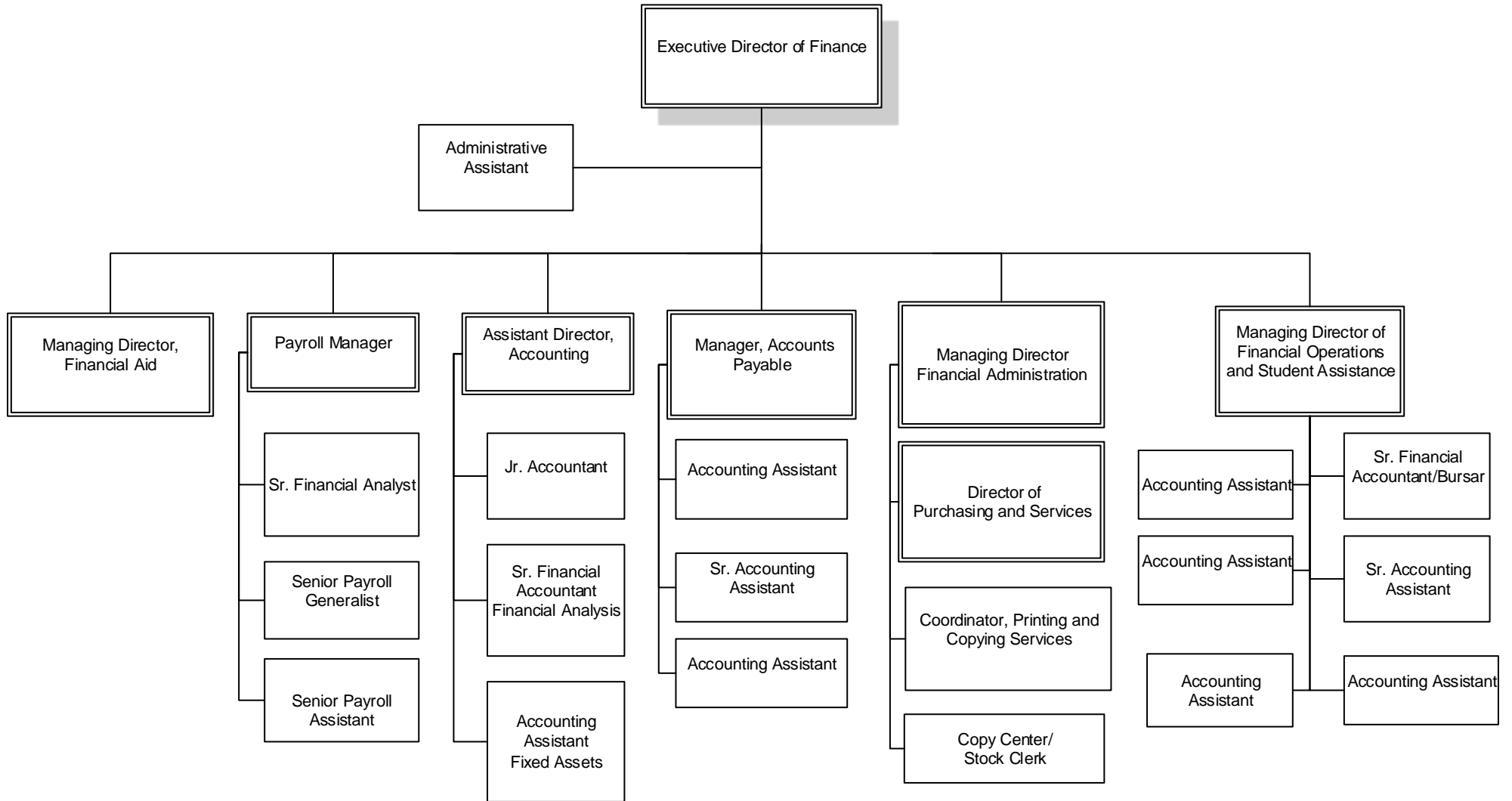


BERGEN COMMUNITY COLLEGE
BERGEN COMMUNITY COLLEGE FOUNDATION



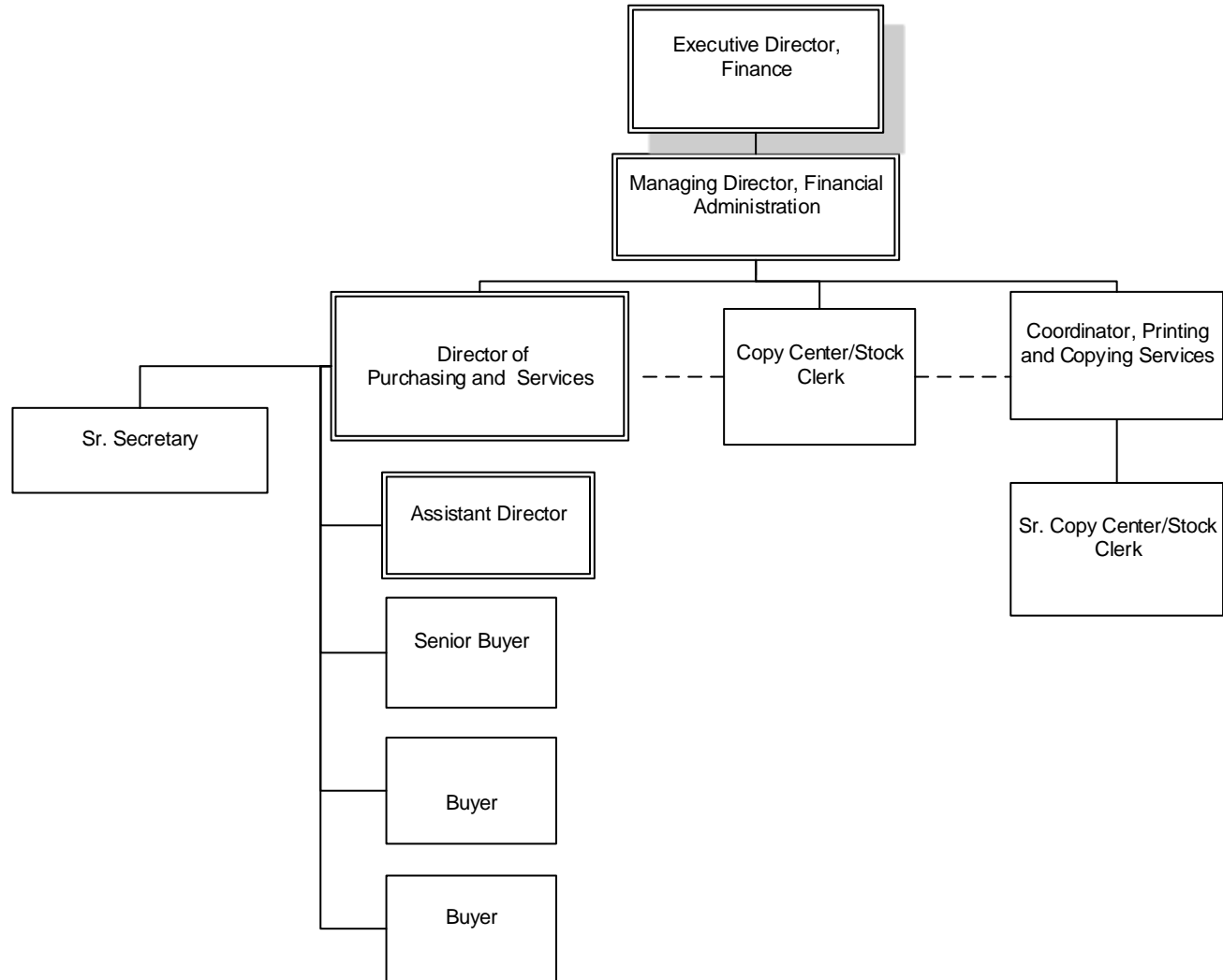
BERGEN COMMUNITY COLLEGE

FINANCE



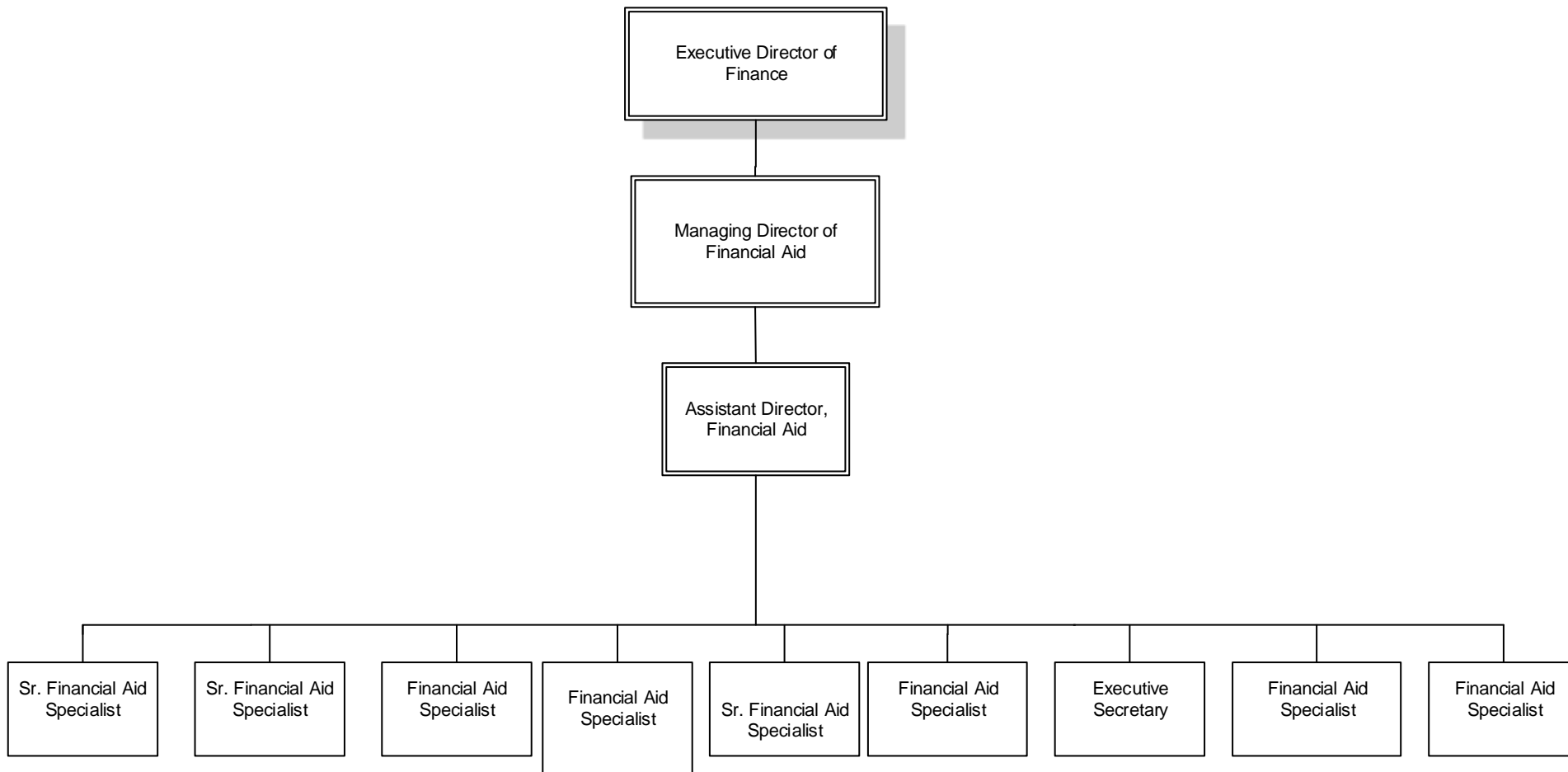
BERGEN COMMUNITY COLLEGE

PURCHASING AND SERVICES



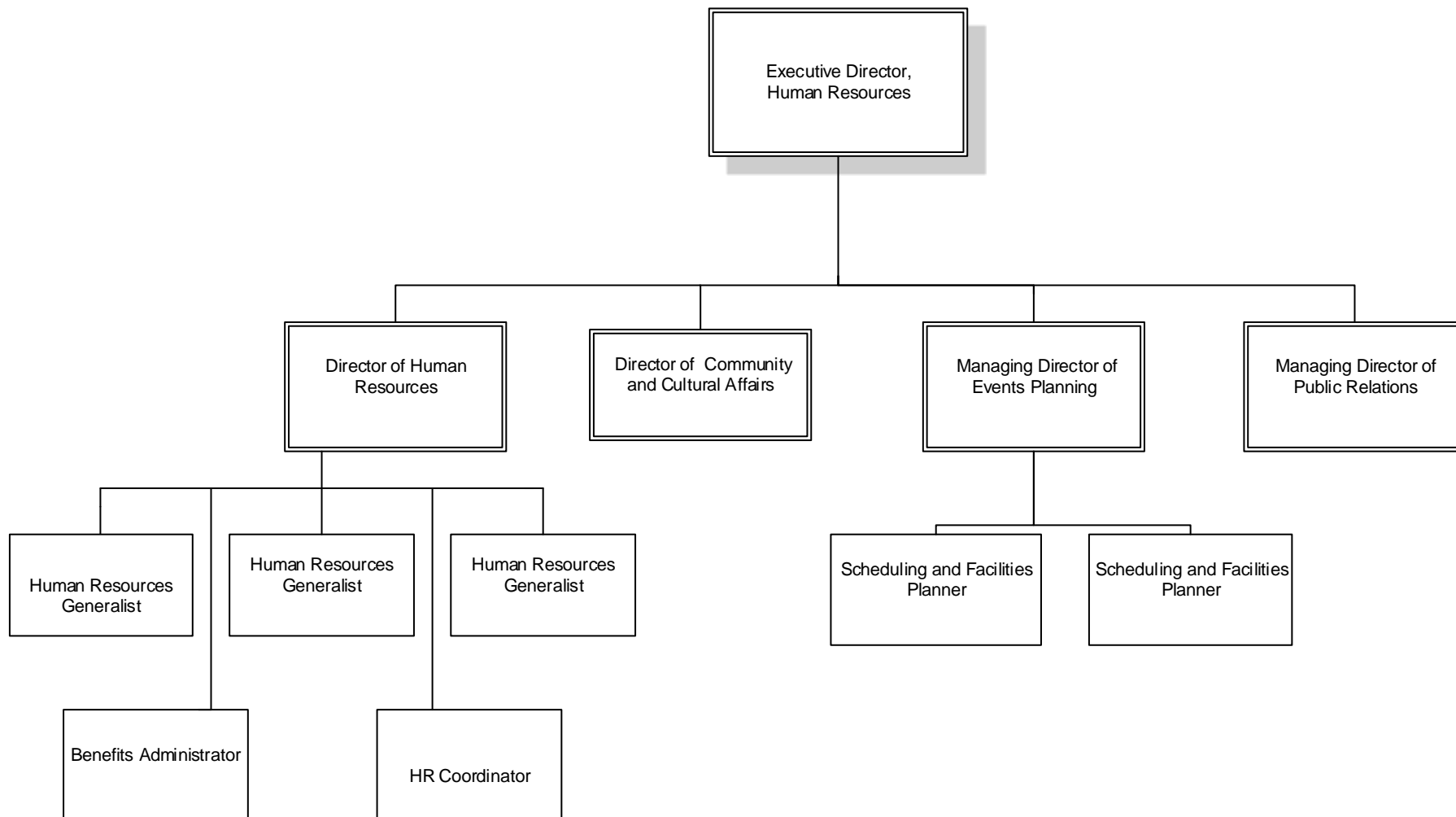
BERGEN COMMUNITY COLLEGE

FINANCIAL AID

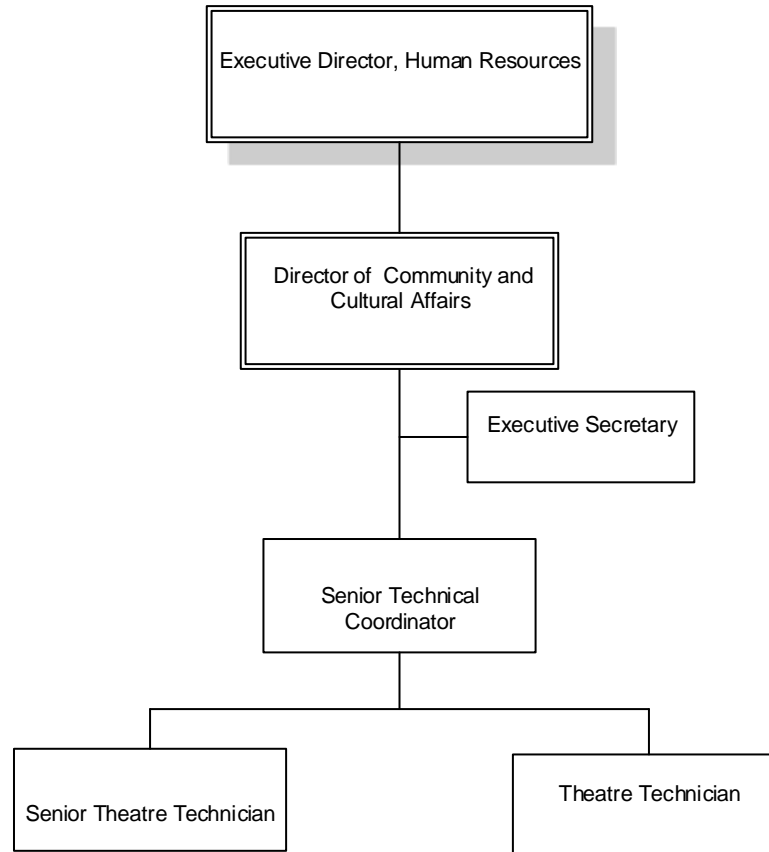


BERGEN COMMUNITY COLLEGE

HUMAN RESOURCES

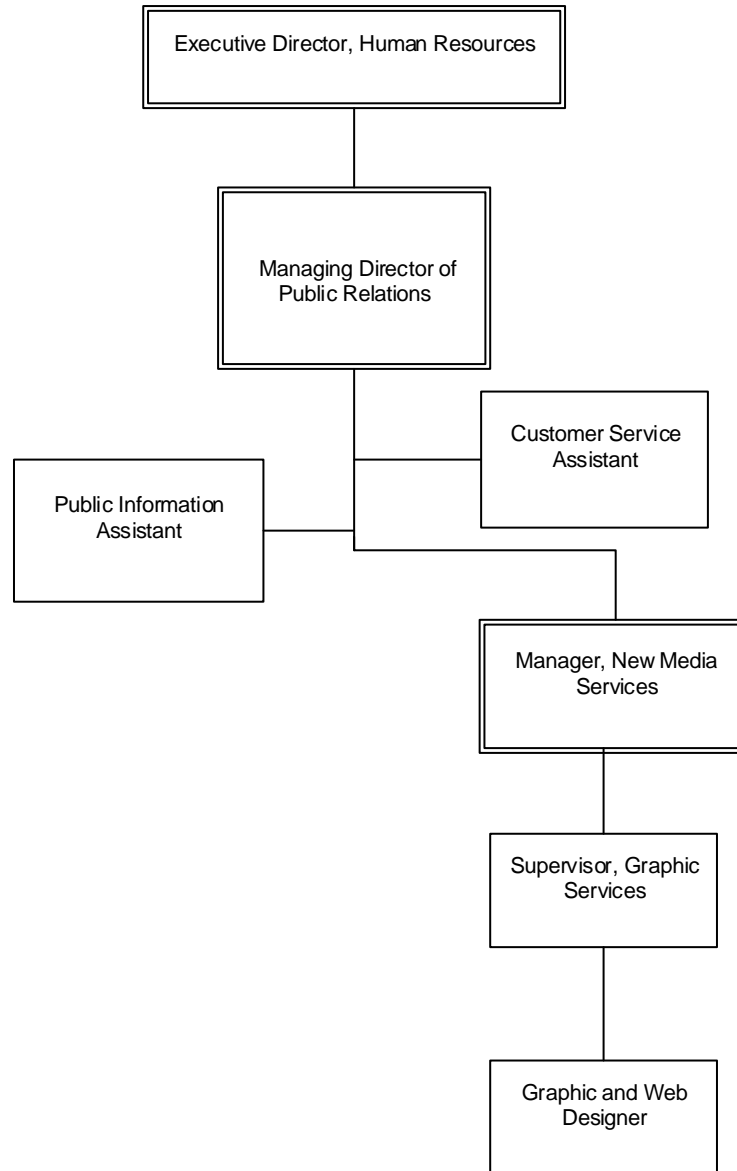


BERGEN COMMUNITY COLLEGE
COMMUNITY AND CULTURAL AFFAIRS



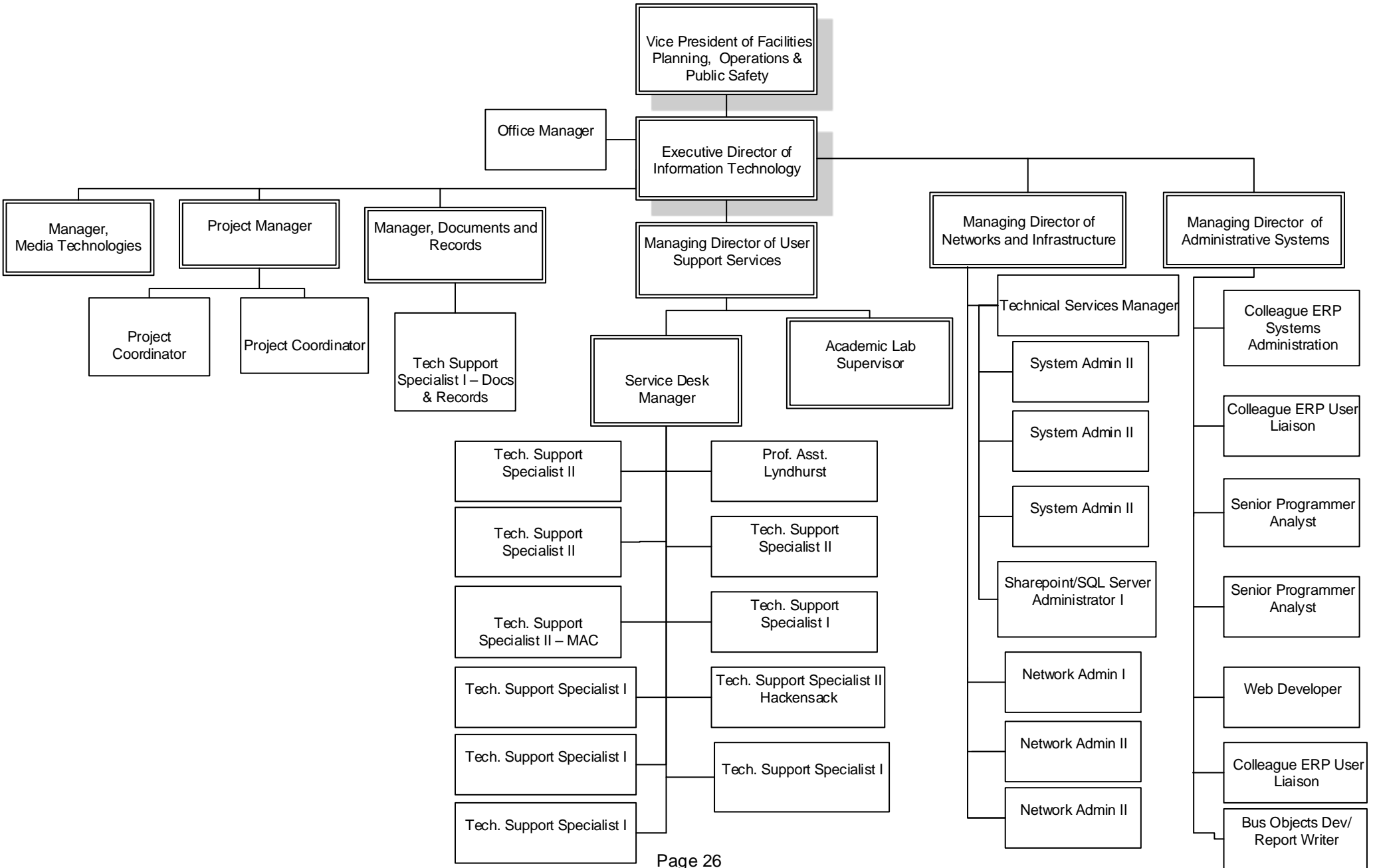
BERGEN COMMUNITY COLLEGE

PUBLIC RELATIONS



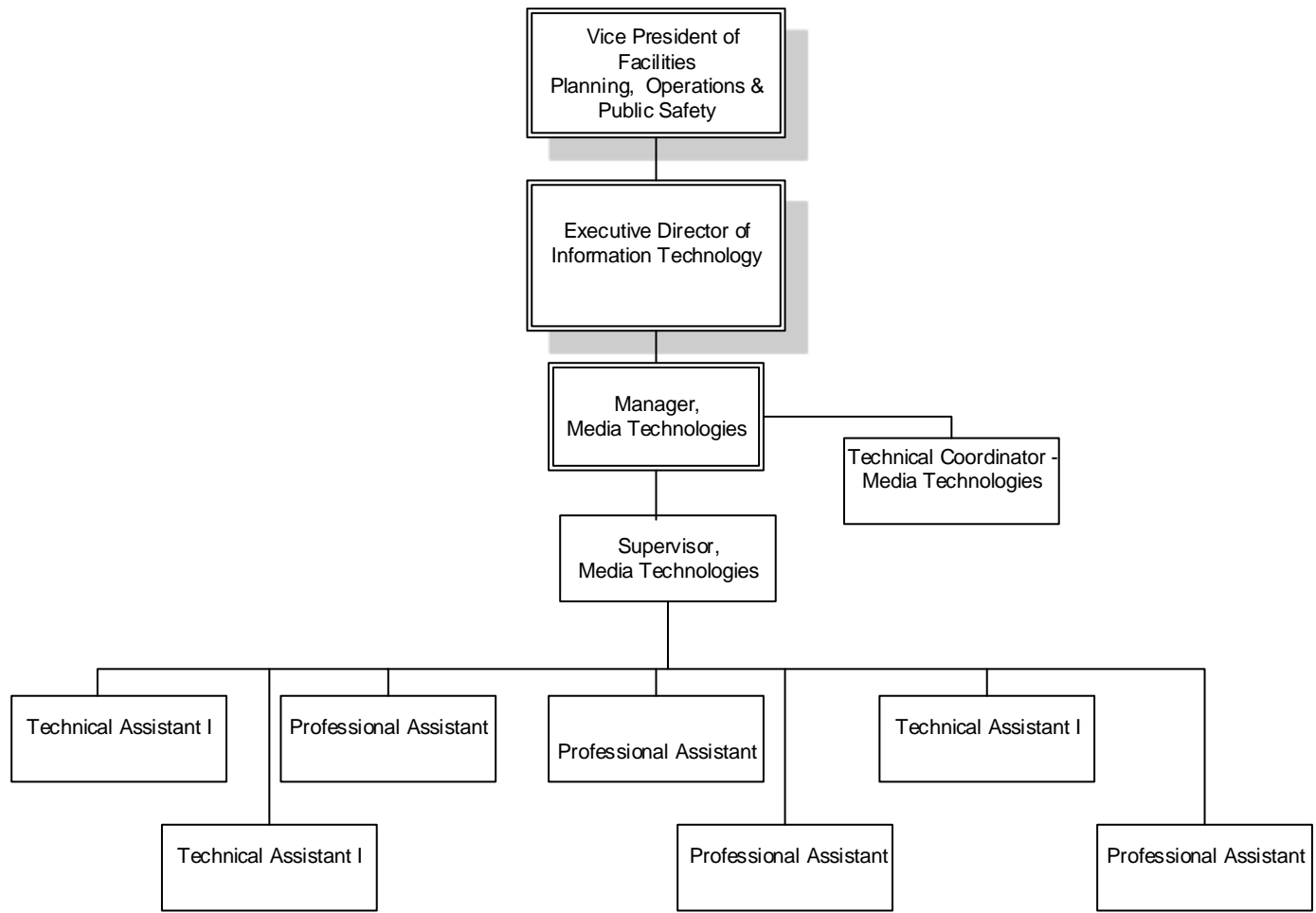
BERGEN COMMUNITY COLLEGE

INFORMATION TECHNOLOGIES



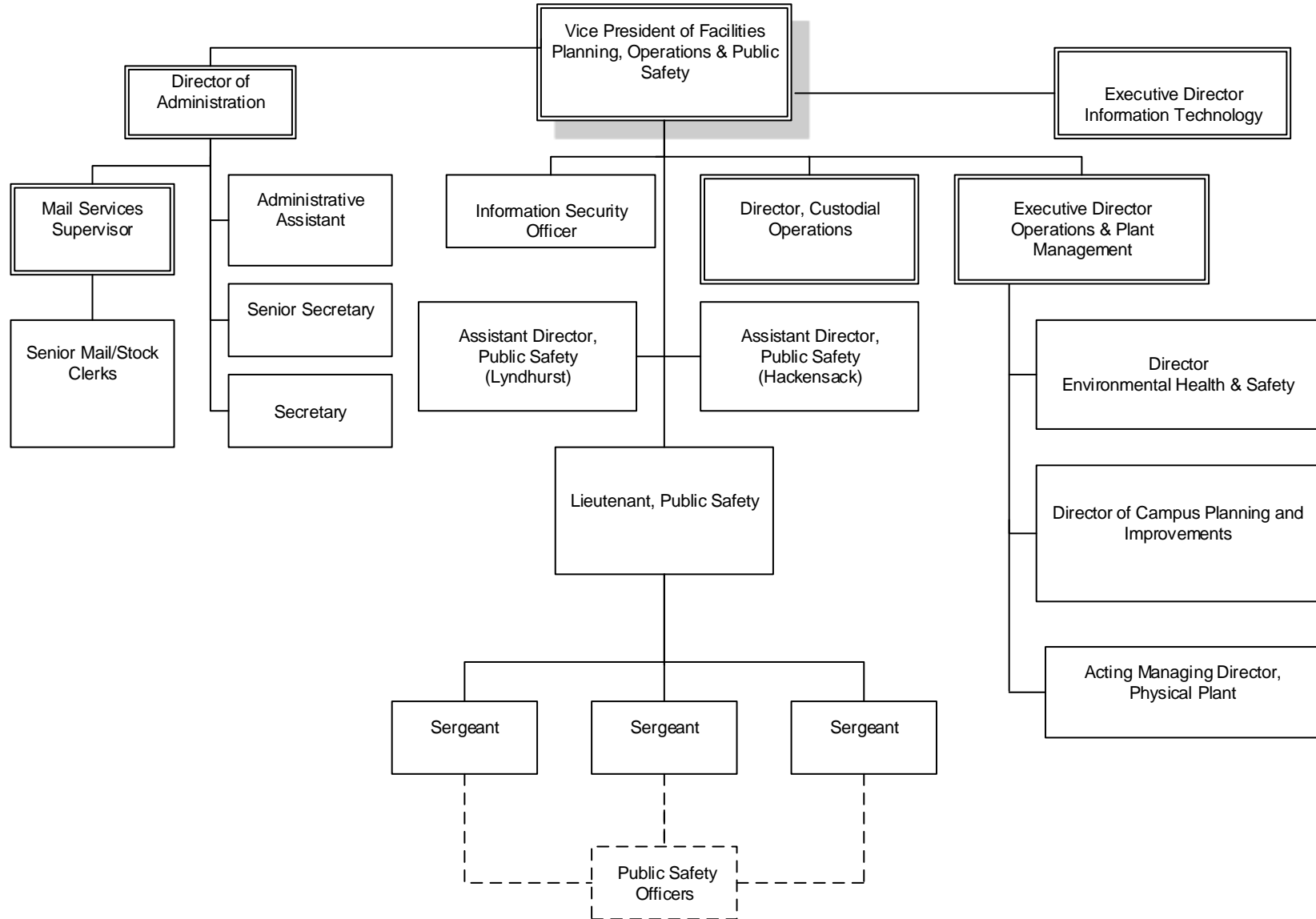
BERGEN COMMUNITY COLLEGE

MEDIA TECHNOLOGIES



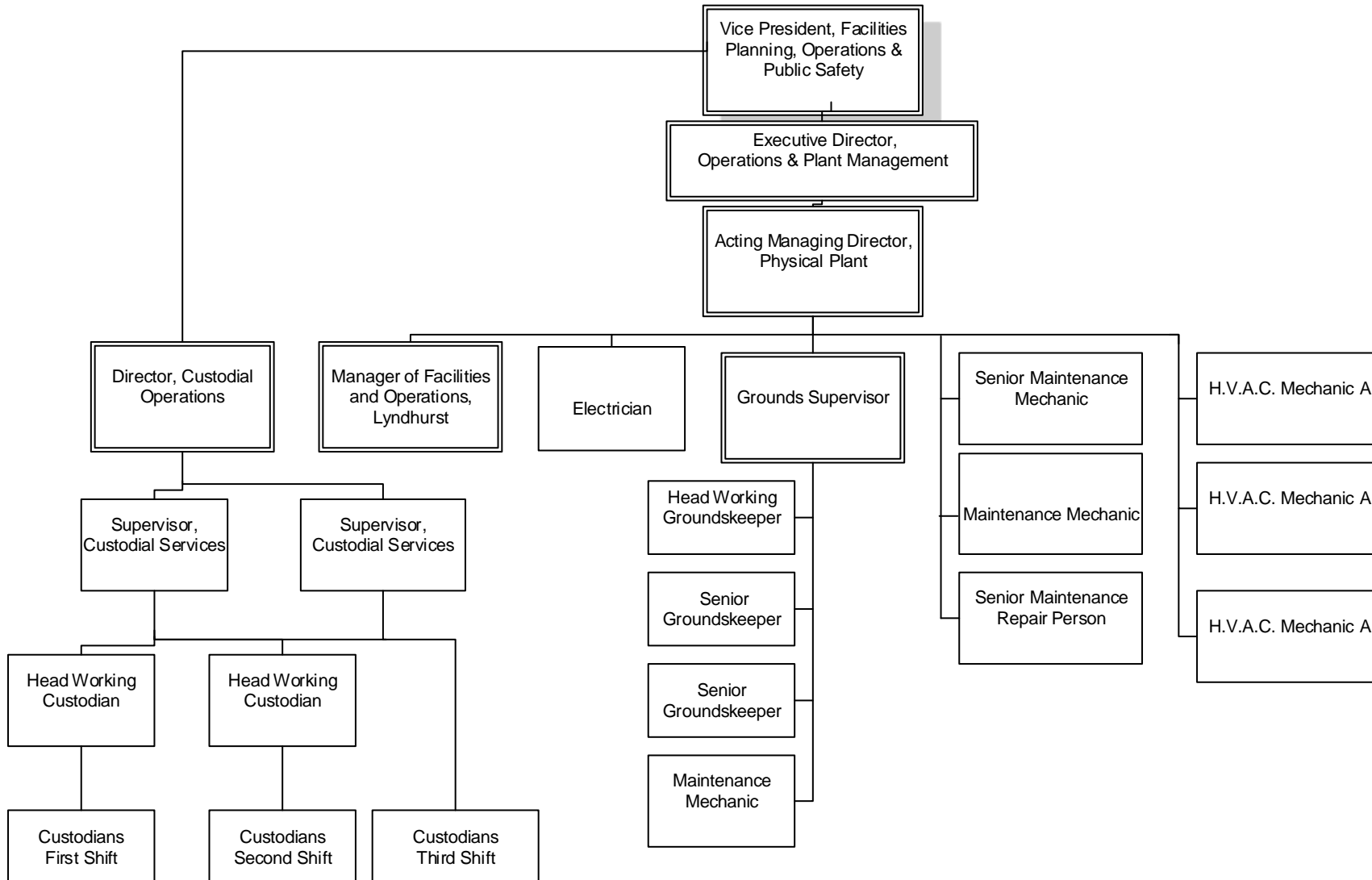
BERGEN COMMUNITY COLLEGE

FACILITIES PLANNING, OPERATIONS & PUBLIC SAFETY



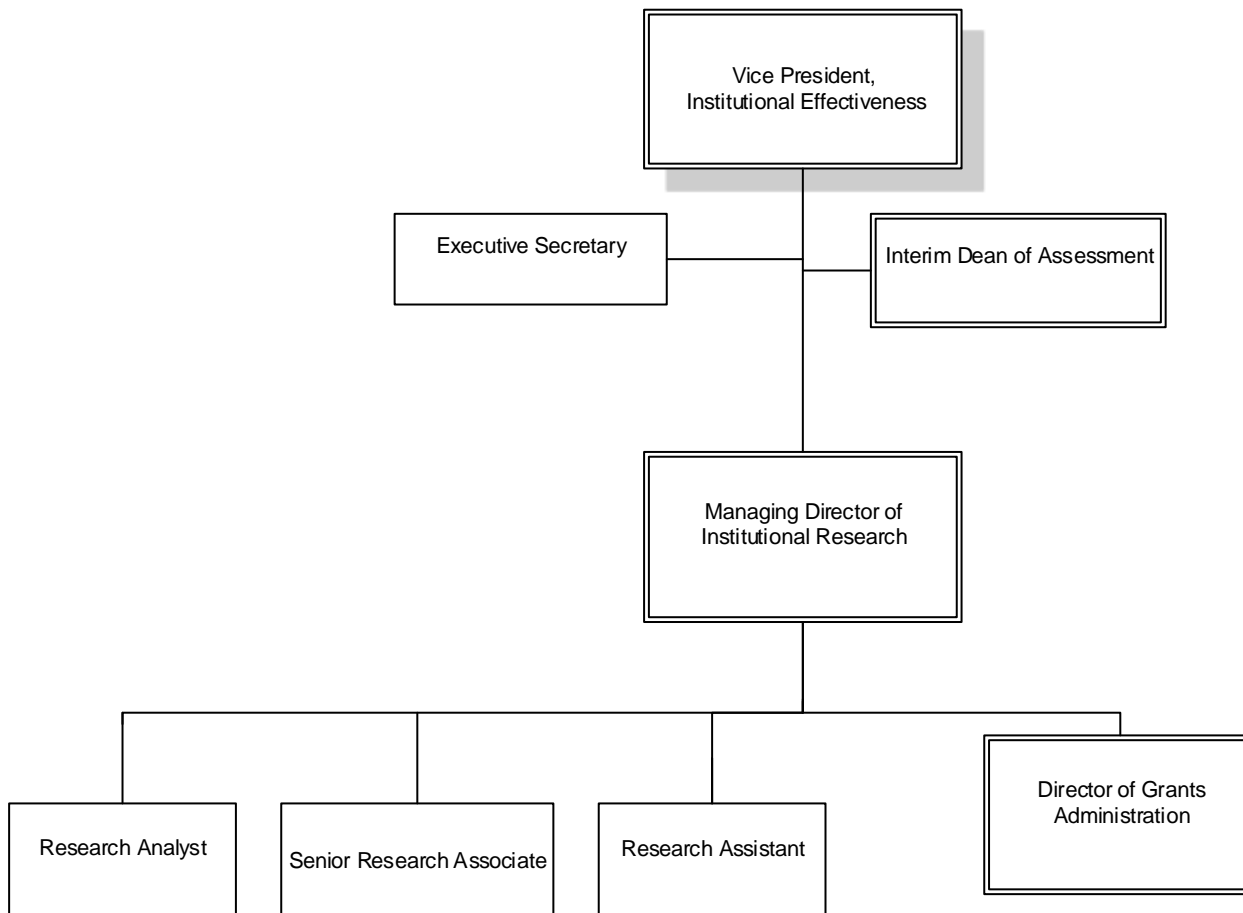
BERGEN COMMUNITY COLLEGE

PHYSICAL PLANT

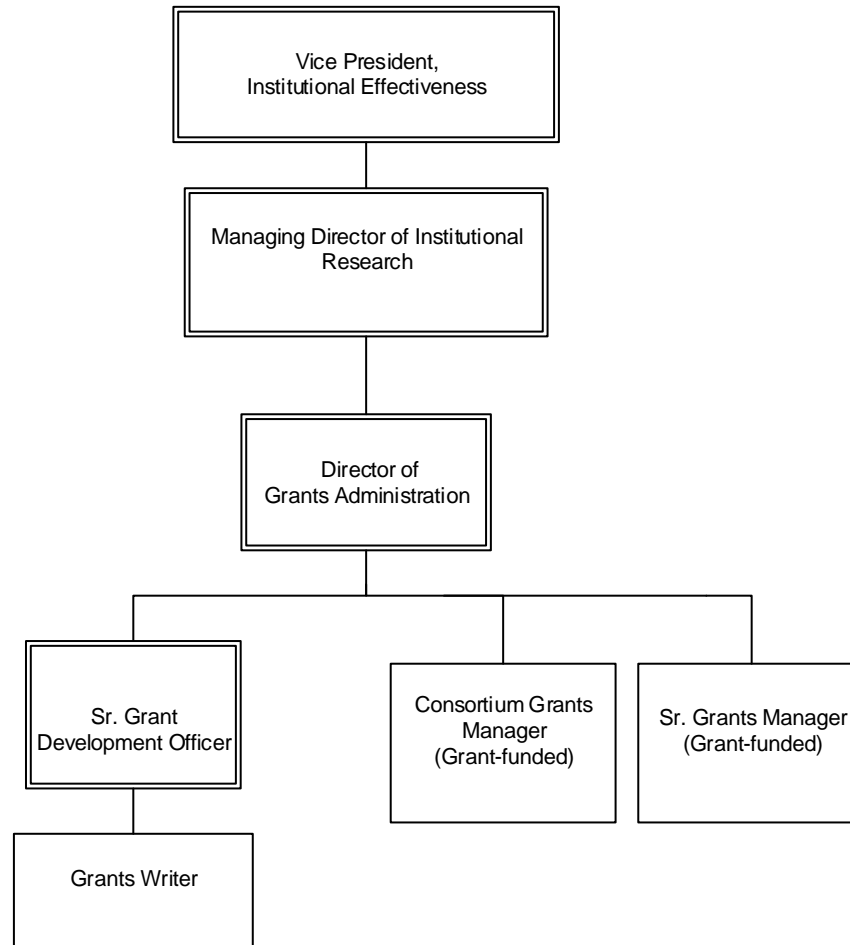


BERGEN COMMUNITY COLLEGE

INSTITUTIONAL EFFECTIVENESS

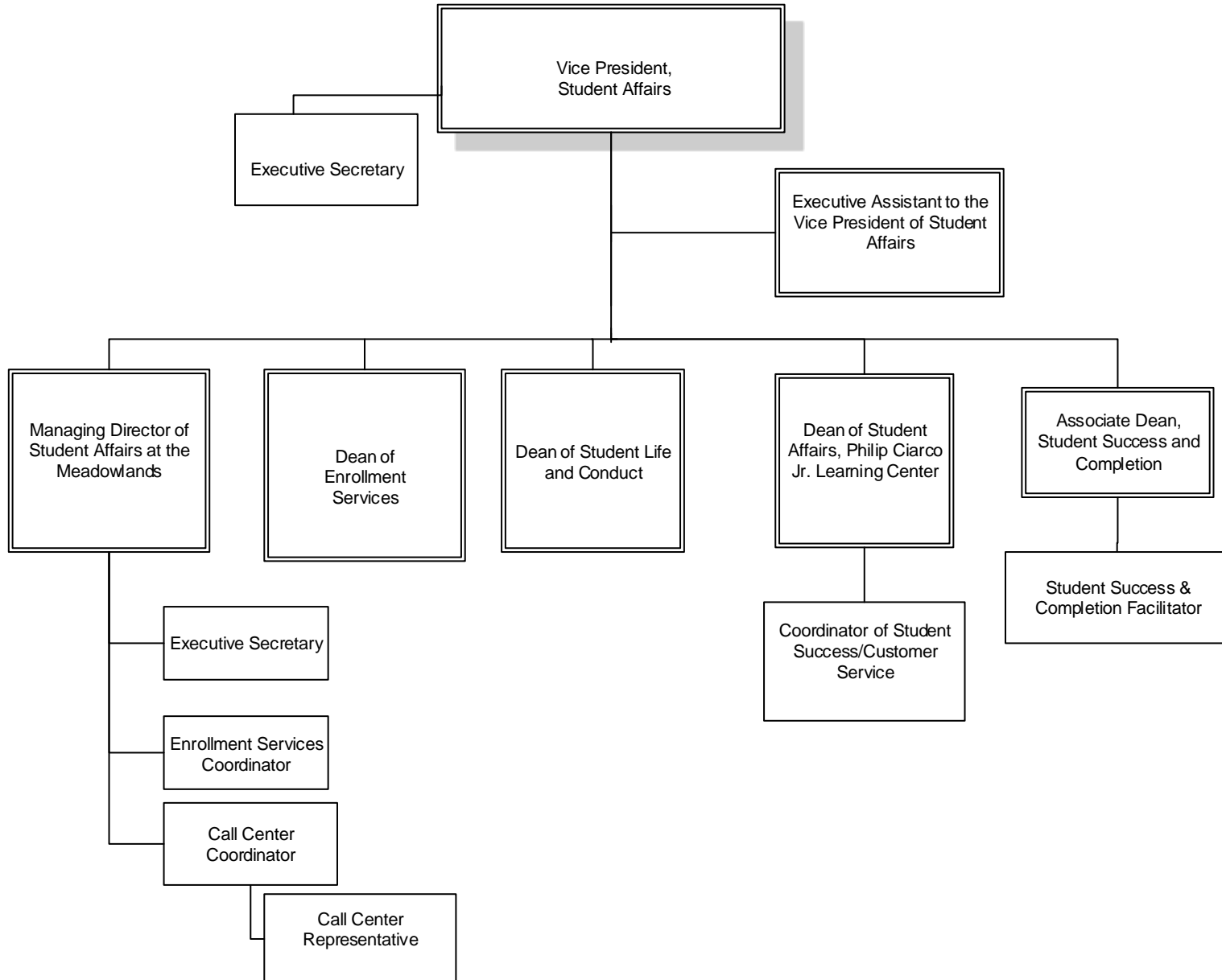


BERGEN COMMUNITY COLLEGE
GRANTS ADMINISTRATION



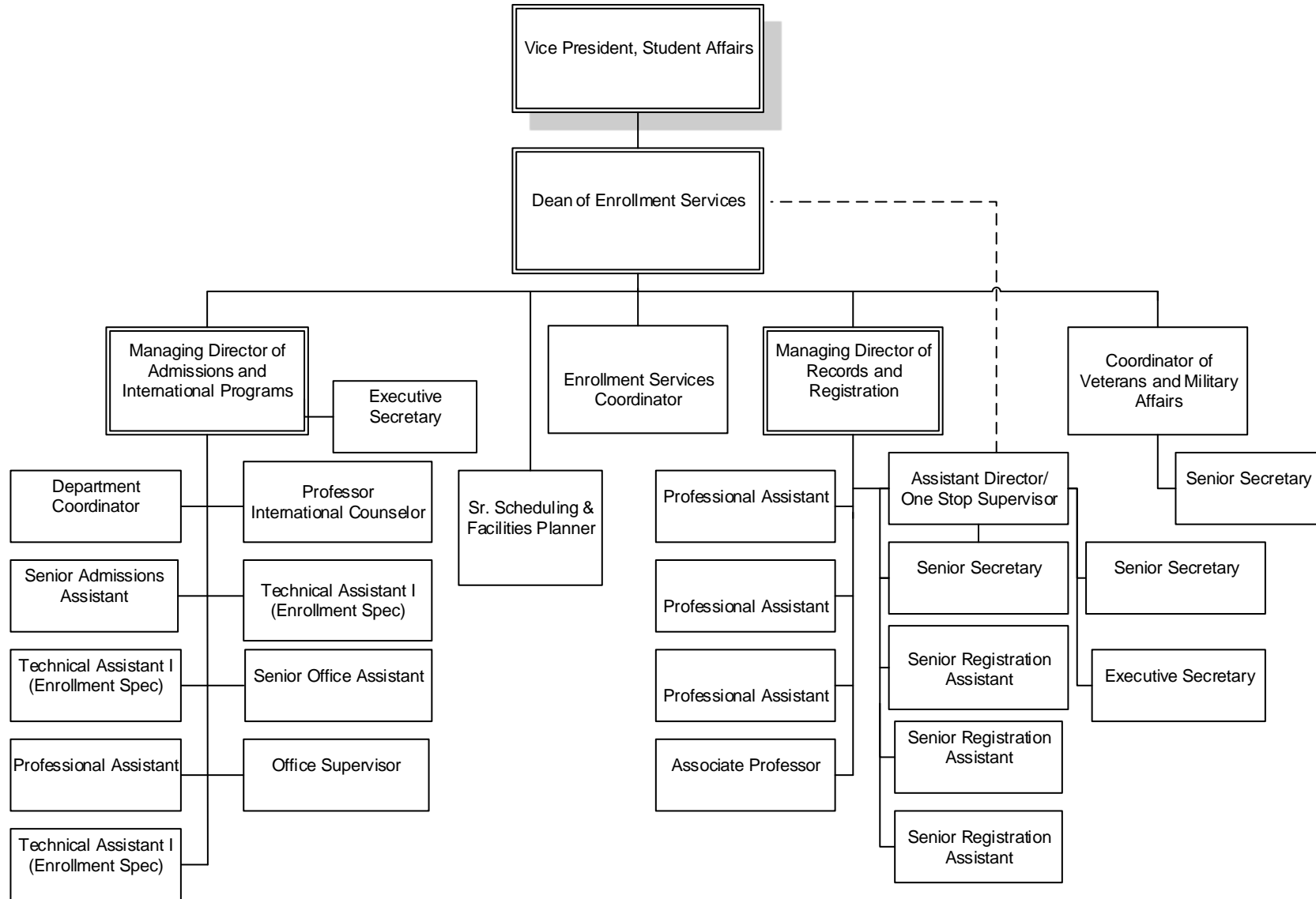
BERGEN COMMUNITY COLLEGE

STUDENT AFFAIRS



BERGEN COMMUNITY COLLEGE

ENROLLMENT SERVICES



BERGEN COMMUNITY COLLEGE

STUDENT LIFE AND CONDUCT

