



## **Organizational Charts**

**May 7, 2024**

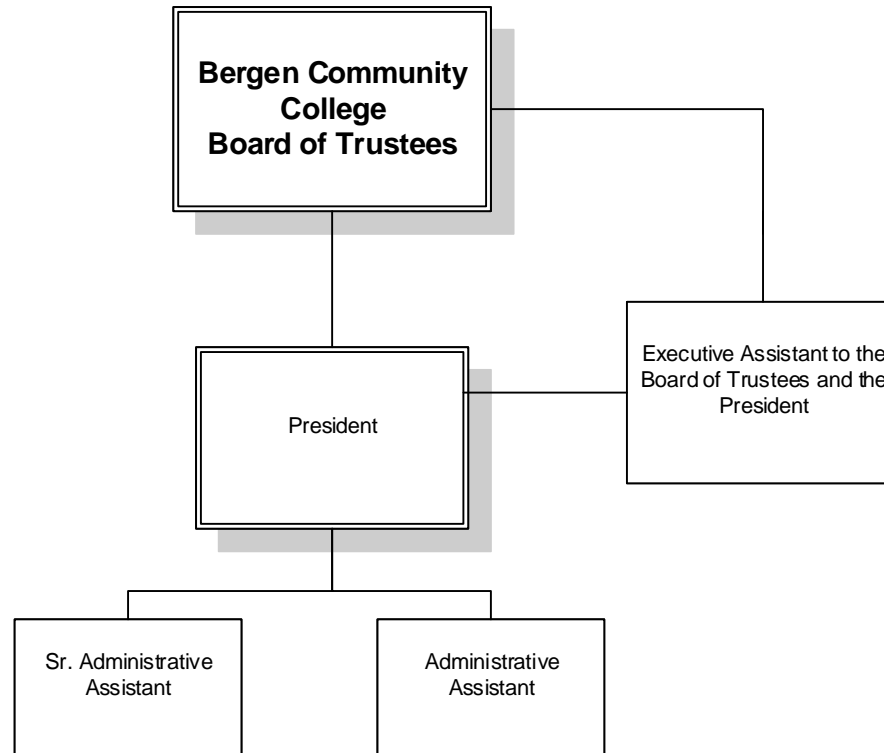
# BERGEN COMMUNITY COLLEGE

## Organizational Charts

### Table of Contents

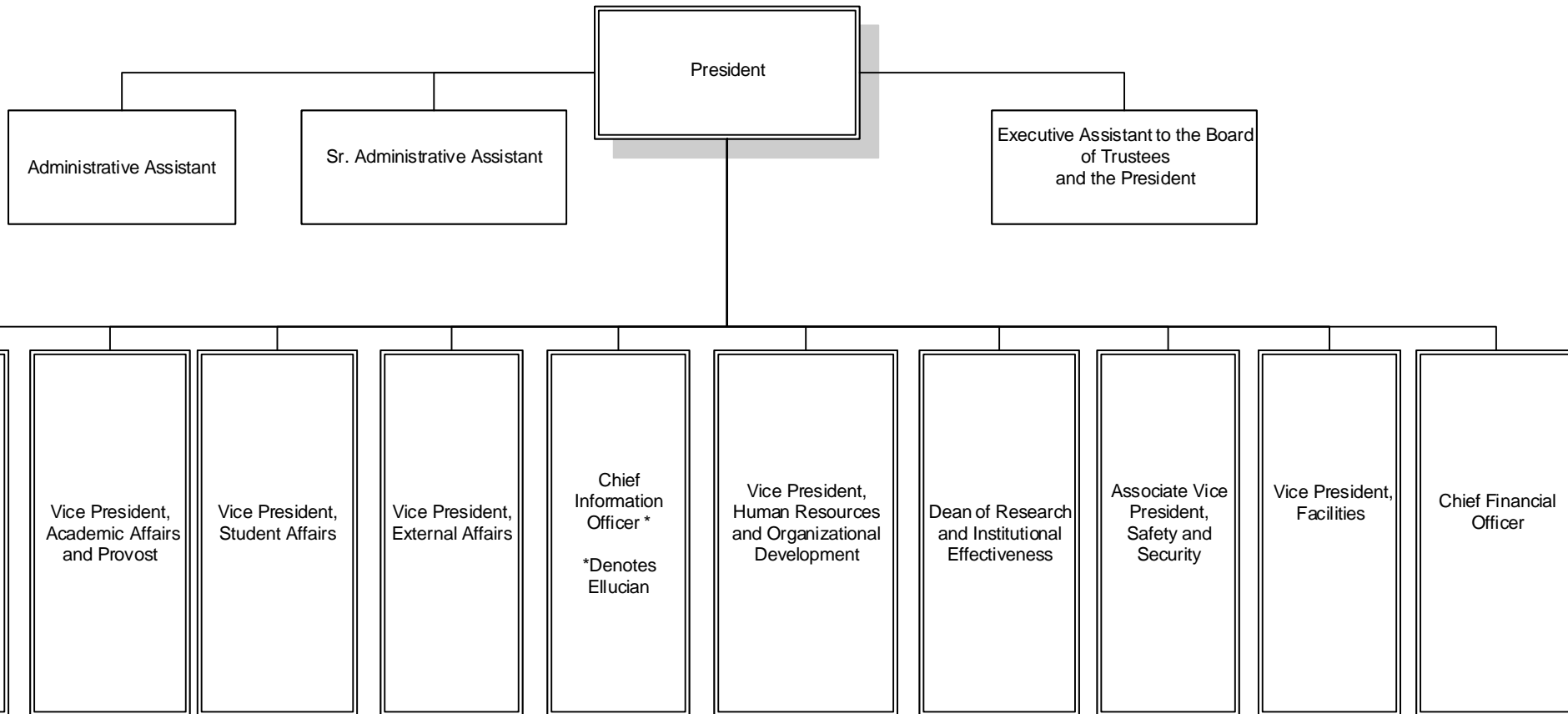
Board of Trustees/President's Office.....	Page 1
Direct Reports to the President.....	Page 2
Academic Affairs.....	Page 3
Adjunct Administration.....	Page 12
Business, Arts and Social Sciences .....	Page 5
Center for Innovation in Teaching and Learning.....	Page 9
Cerullo Learning Assistance Center.....	Page 10
Child Development Center.....	Page 11
Health Professions.....	Page 6
Humanities .....	Page 4
Math, Science, and Technology .....	Page 7
Multicultural Affairs.....	Page 13
Sidney Silverman Library.....	Page 8
Continuing Education and Workforce Development .....	Page 14
Ciarco.....	Page 15
External Affairs.....	Page 16
Events Planning/Marketing.....	Page 17
Bergen Community College Foundation.....	Page 18
Public Relations .....	Page 19
Facilities Planning and Operations.....	Page 20
Custodial.....	Page 21
Physical Plant.....	Page 22
Finance.....	Page 23
Accounting and Budget.....	Page 24
Bursar .....	Page 25
Grants Administration. . . . .	Page 26
Purchasing and Services.....	Page 27
Human Resources and Employee Relations .....	Page 28
Information Technologies.....	Page 29
Research and Institutional Effectiveness.....	Page 30
Safety and Security.....	Page 31
Student Affairs.....	Page 32
Career and Transfer Services and Counseling Center .....	Page 35
Enrollment Services.....	Page 33
Financial Aid.....	Page 36
Off-Campus Sites .....	Page 37
Student Life and Conduct.....	Page 38
Student Support Services.....	Page 34

**BERGEN COMMUNITY COLLEGE**  
**BOARD OF TRUSTEES/PRESIDENT'S OFFICE**



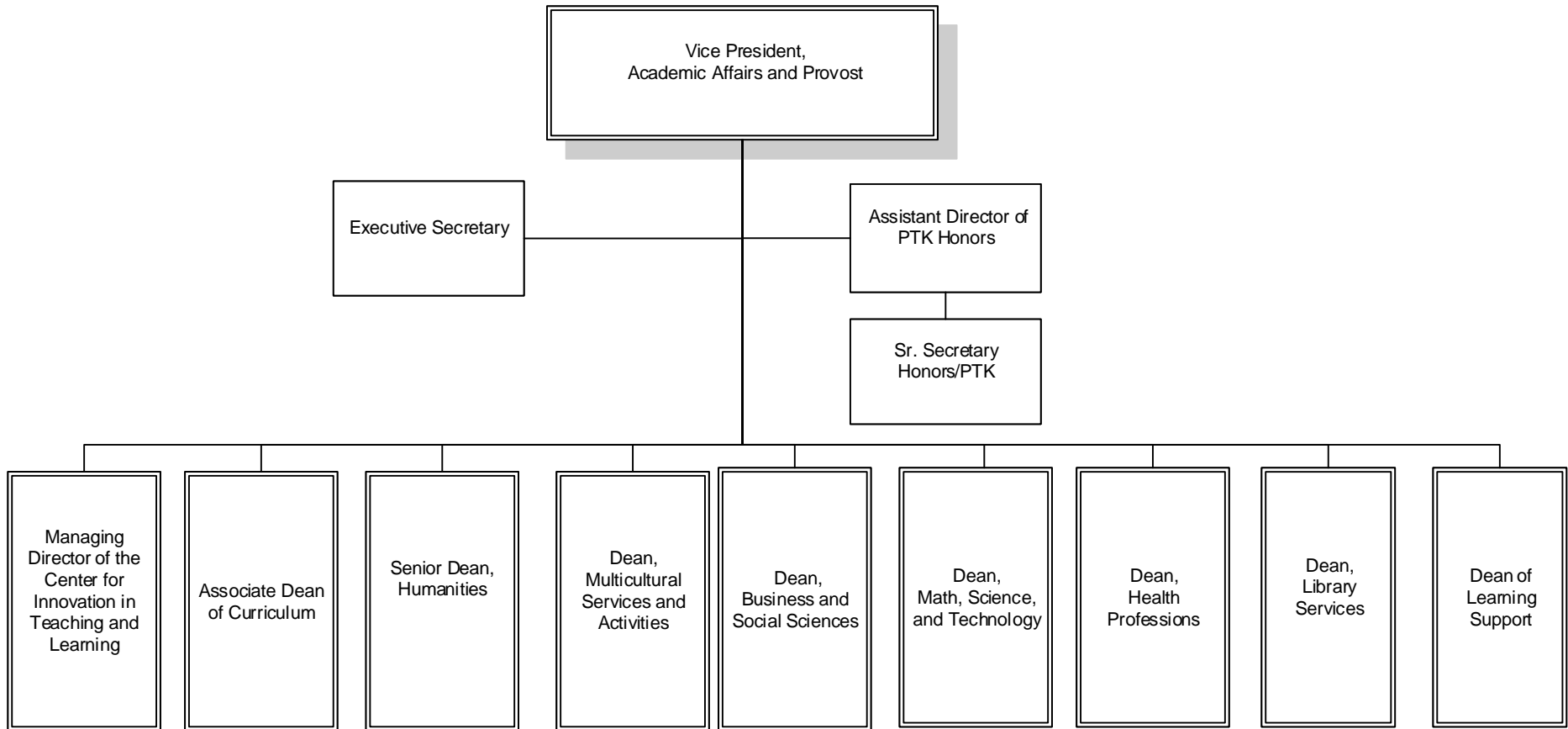
# BERGEN COMMUNITY COLLEGE

## DIRECT REPORTS TO THE PRESIDENT



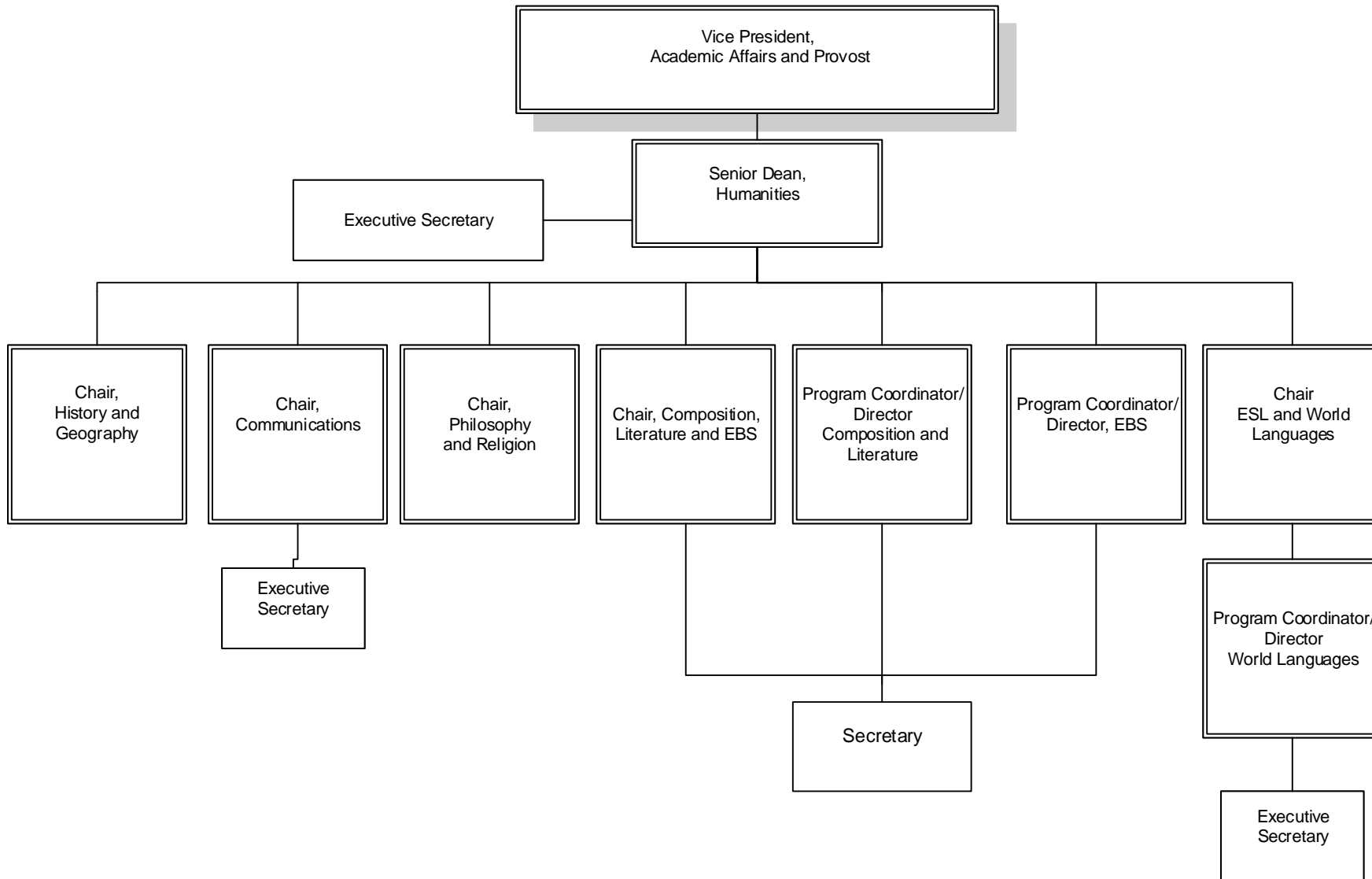
# BERGEN COMMUNITY COLLEGE

## ACADEMIC AFFAIRS



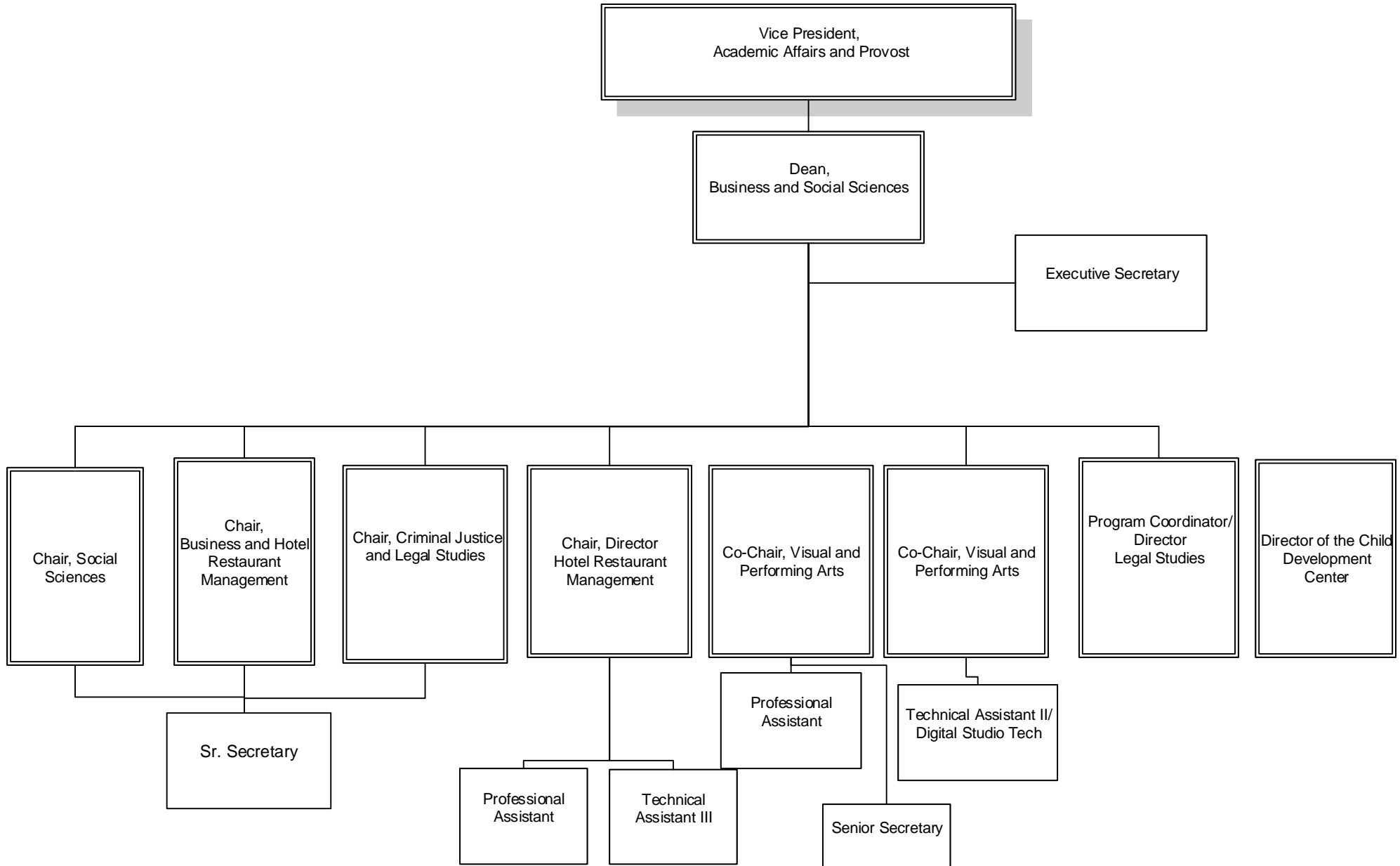
# BERGEN COMMUNITY COLLEGE

## HUMANITIES



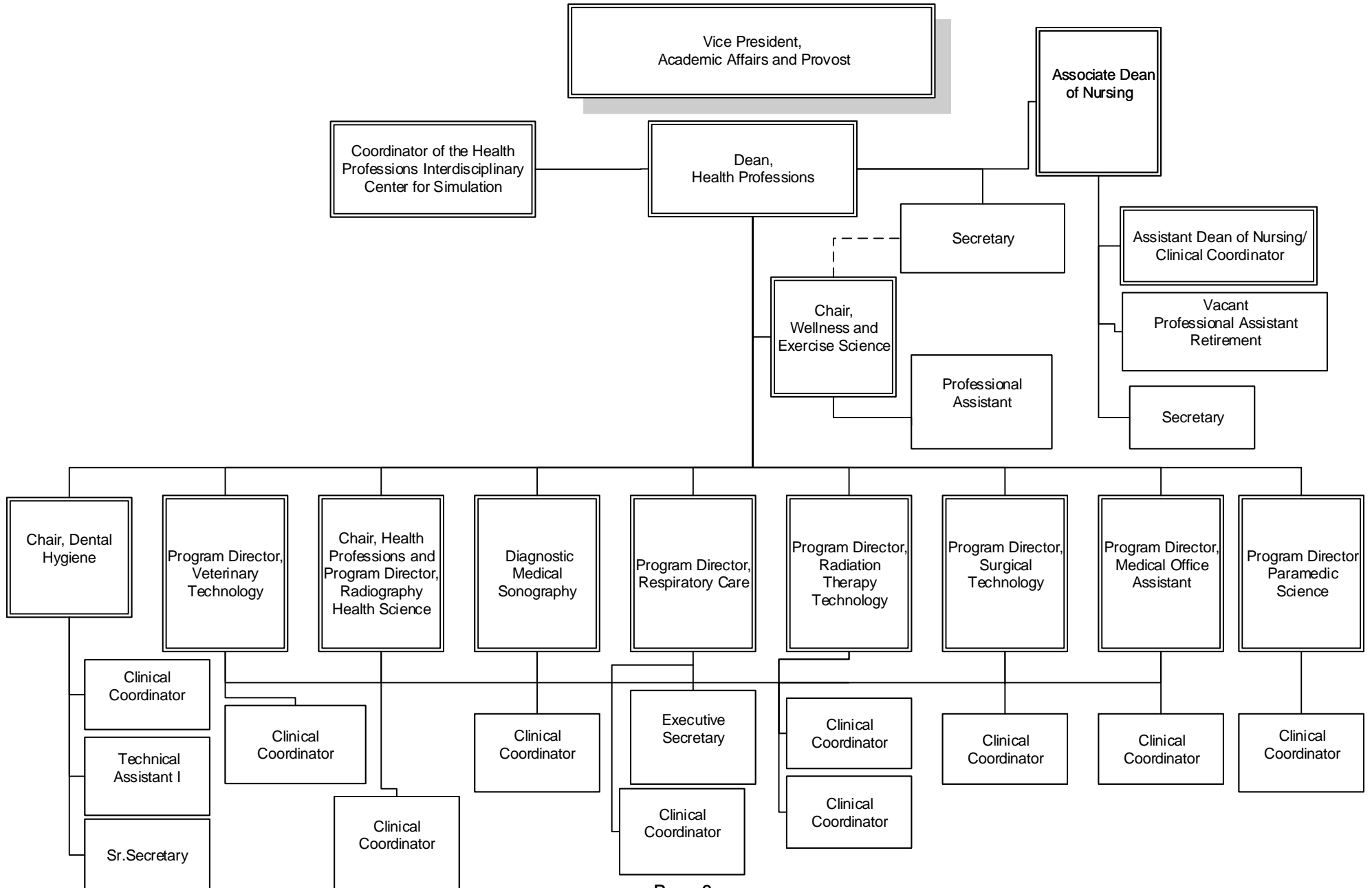
# BERGEN COMMUNITY COLLEGE

## BUSINESS AND SOCIAL SCIENCES



# BERGEN COMMUNITY COLLEGE

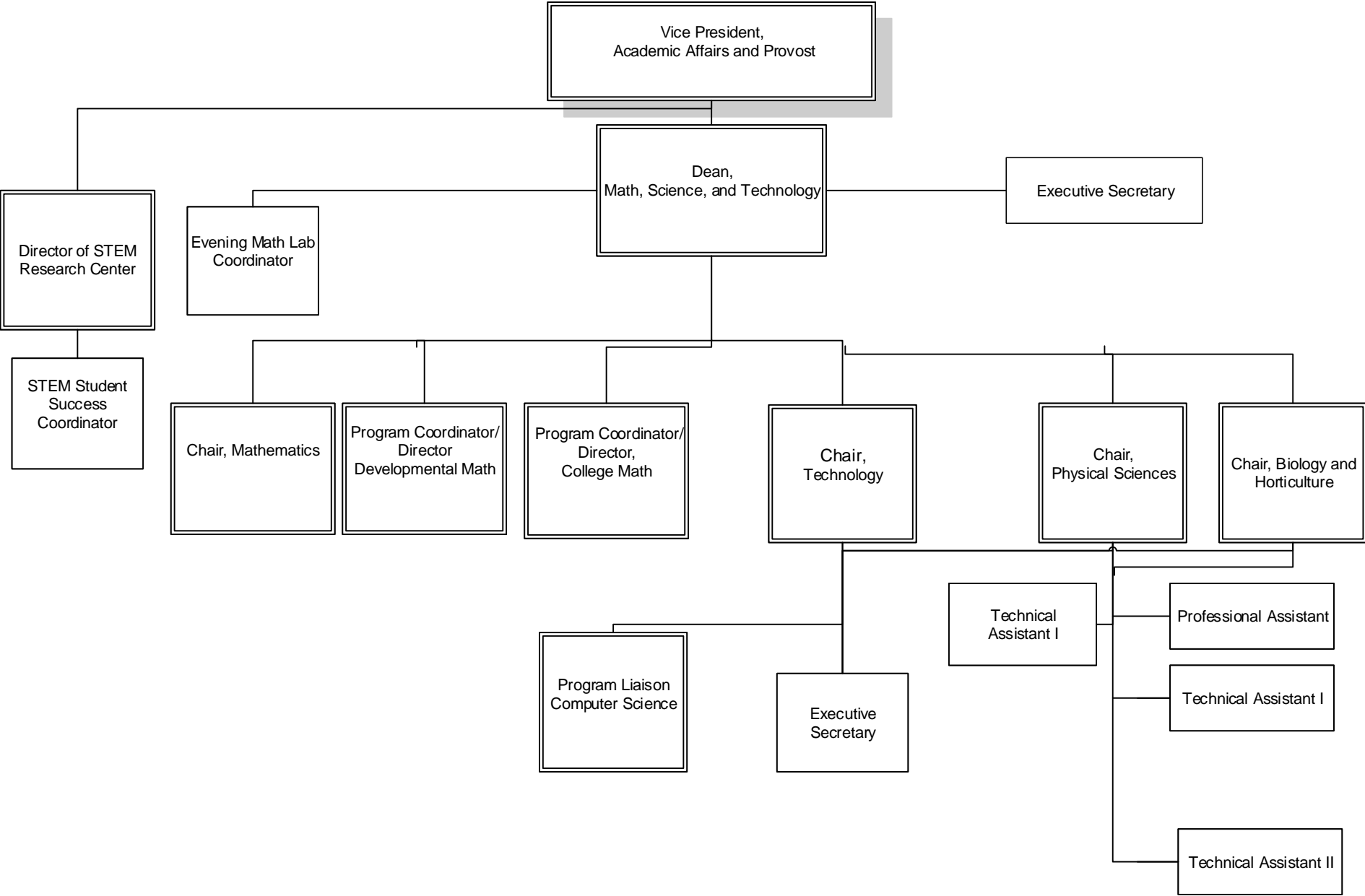
## HEALTH PROFESSIONS





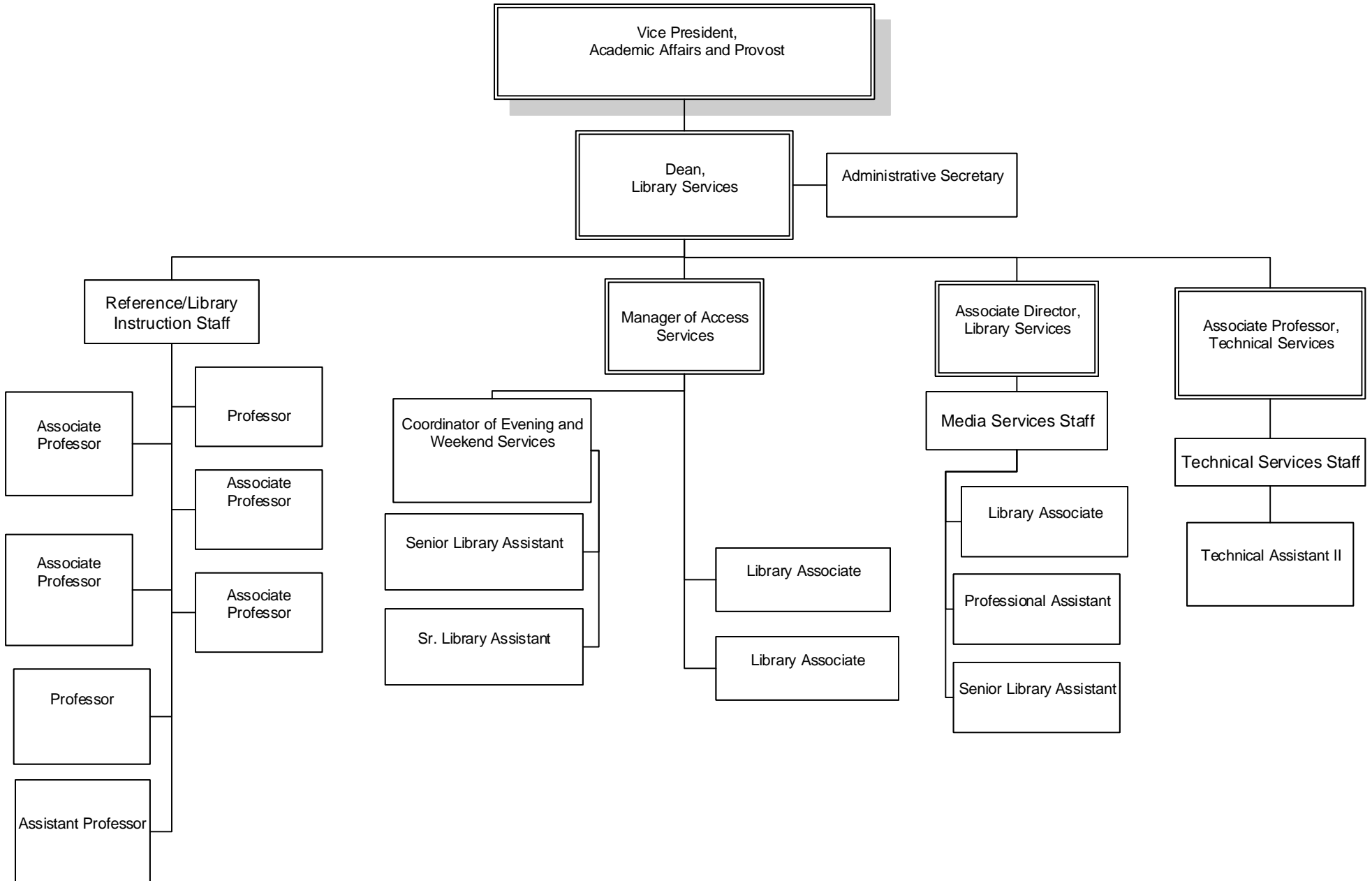
# BERGEN COMMUNITY COLLEGE

## MATH, SCIENCE, AND TECHNOLOGY

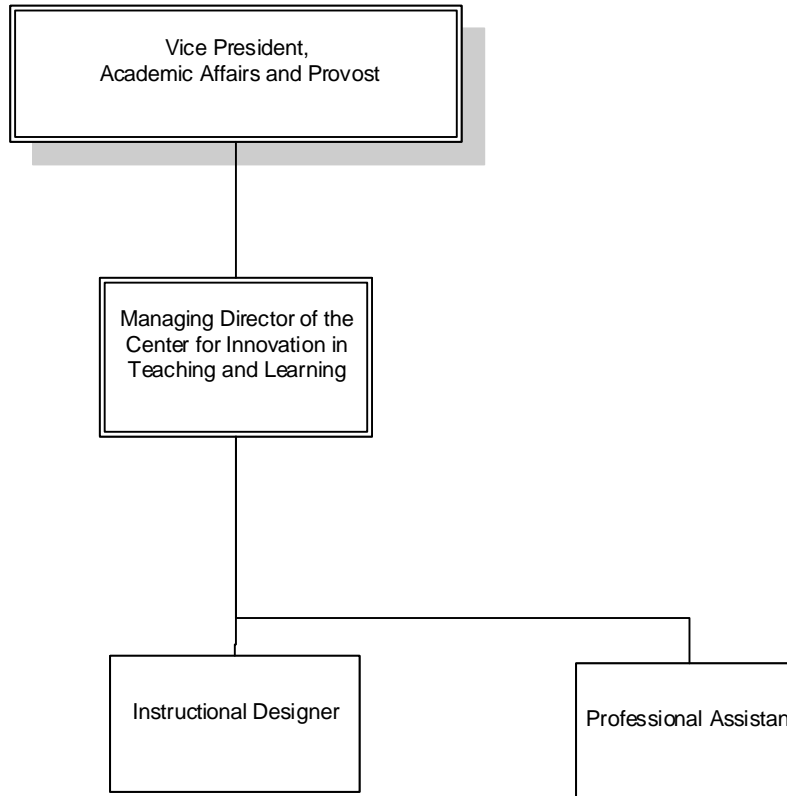


# BERGEN COMMUNITY COLLEGE

## SIDNEY SILVERMAN LIBRARY

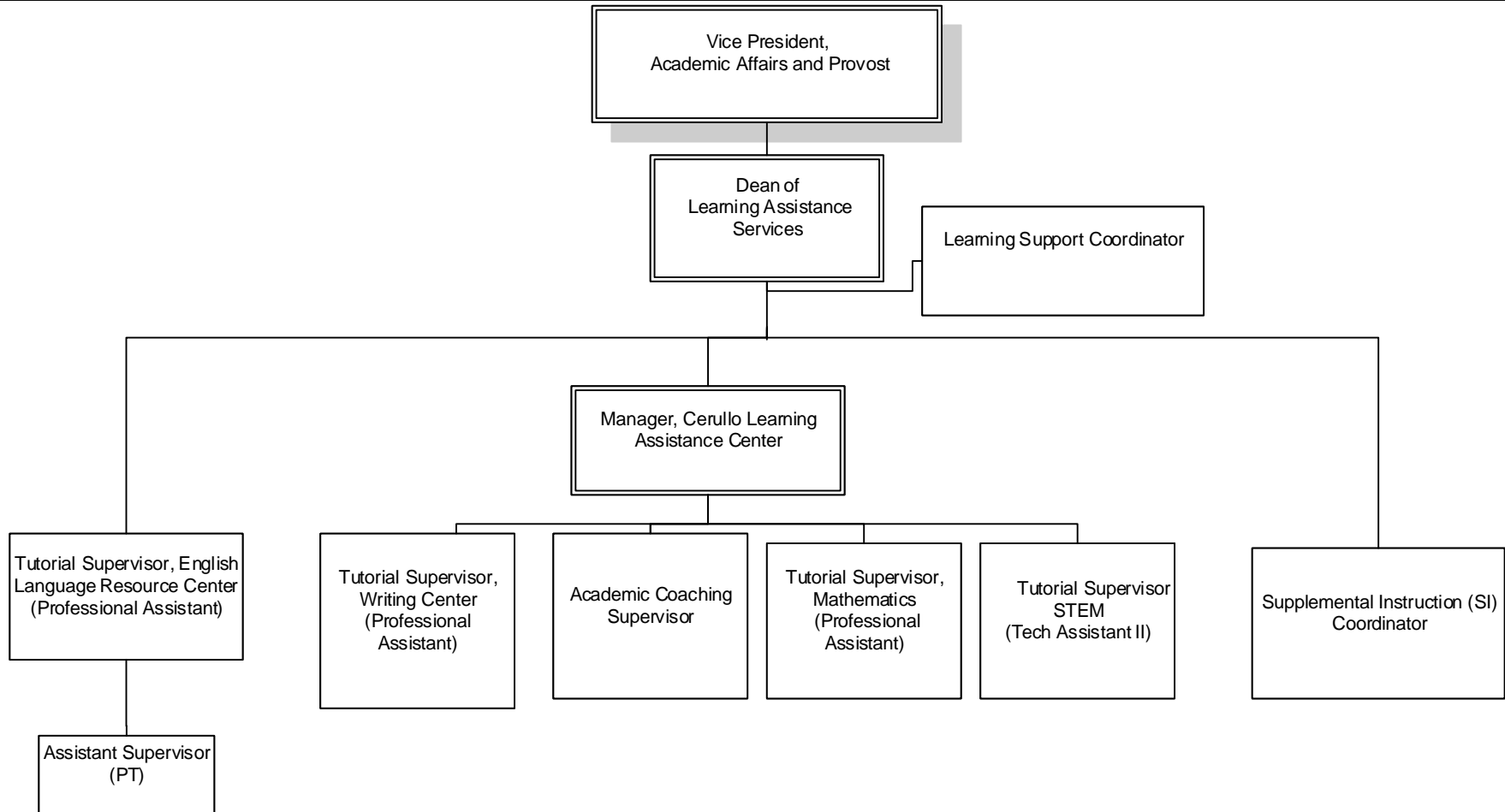


**BERGEN COMMUNITY COLLEGE**  
**CENTER FOR INNOVATION IN TEACHING AND LEARNING**

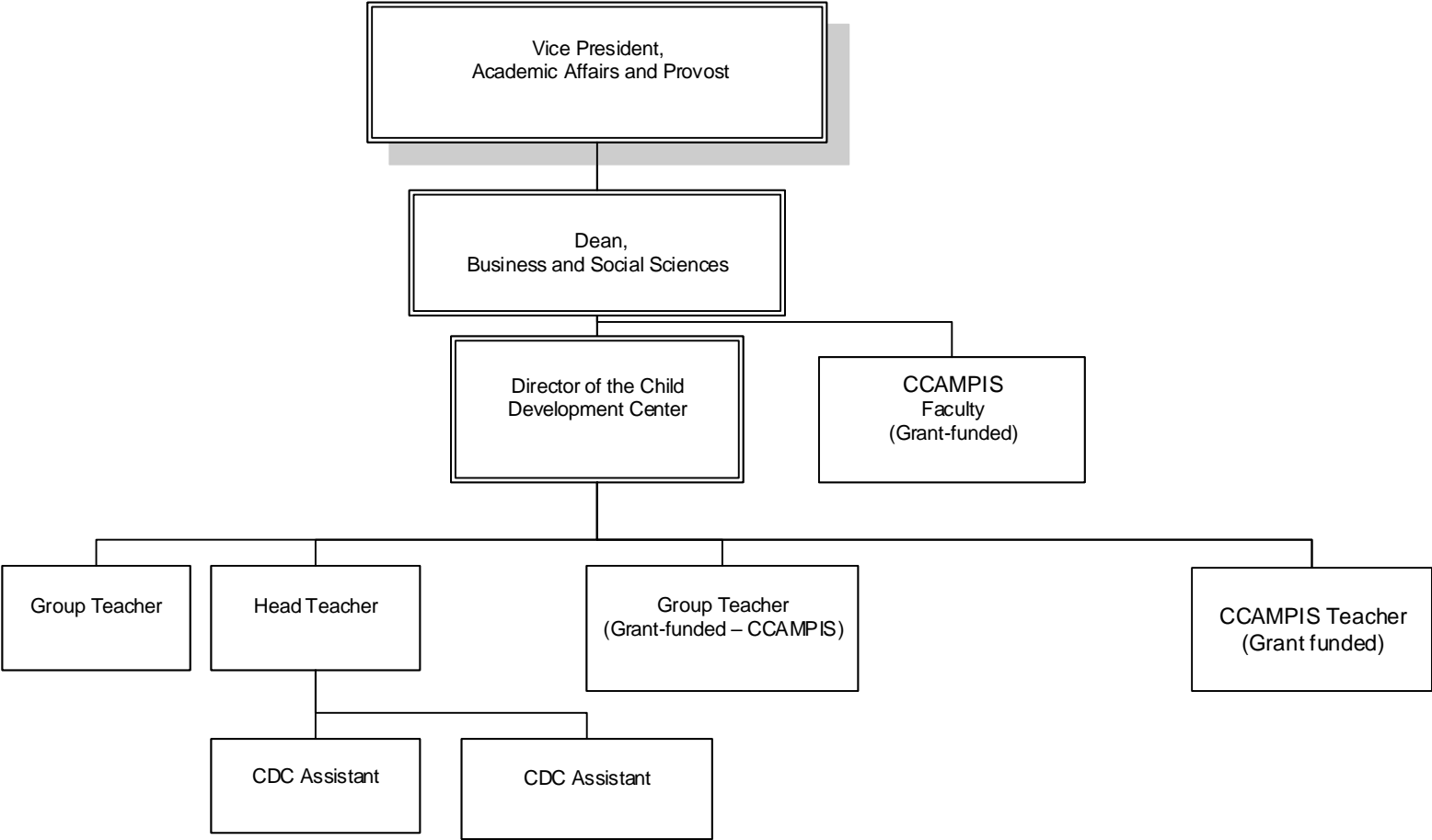


# BERGEN COMMUNITY COLLEGE

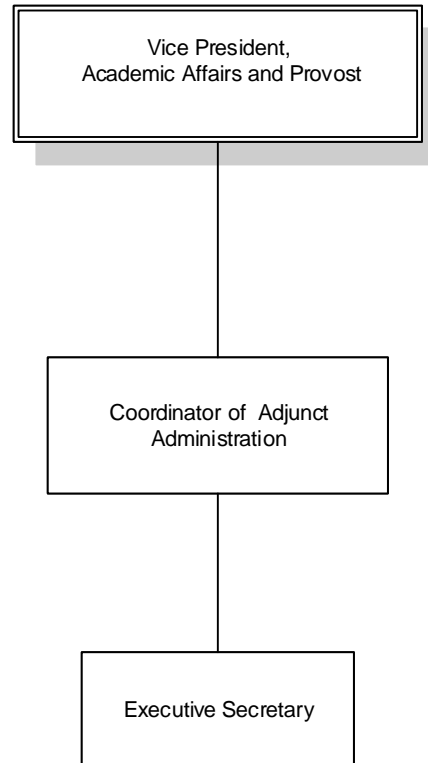
## CERULLO LEARNING ASSISTANCE CENTER



**BERGEN COMMUNITY COLLEGE**  
**CHILD DEVELOPMENT CENTER**

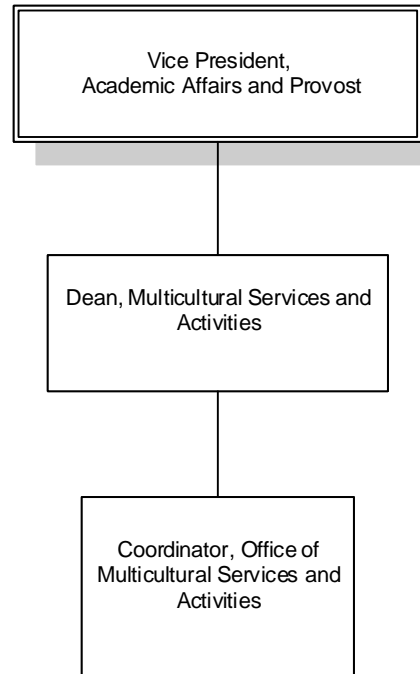


**BERGEN COMMUNITY COLLEGE**  
**ADJUNCT ADMINISTRATION**



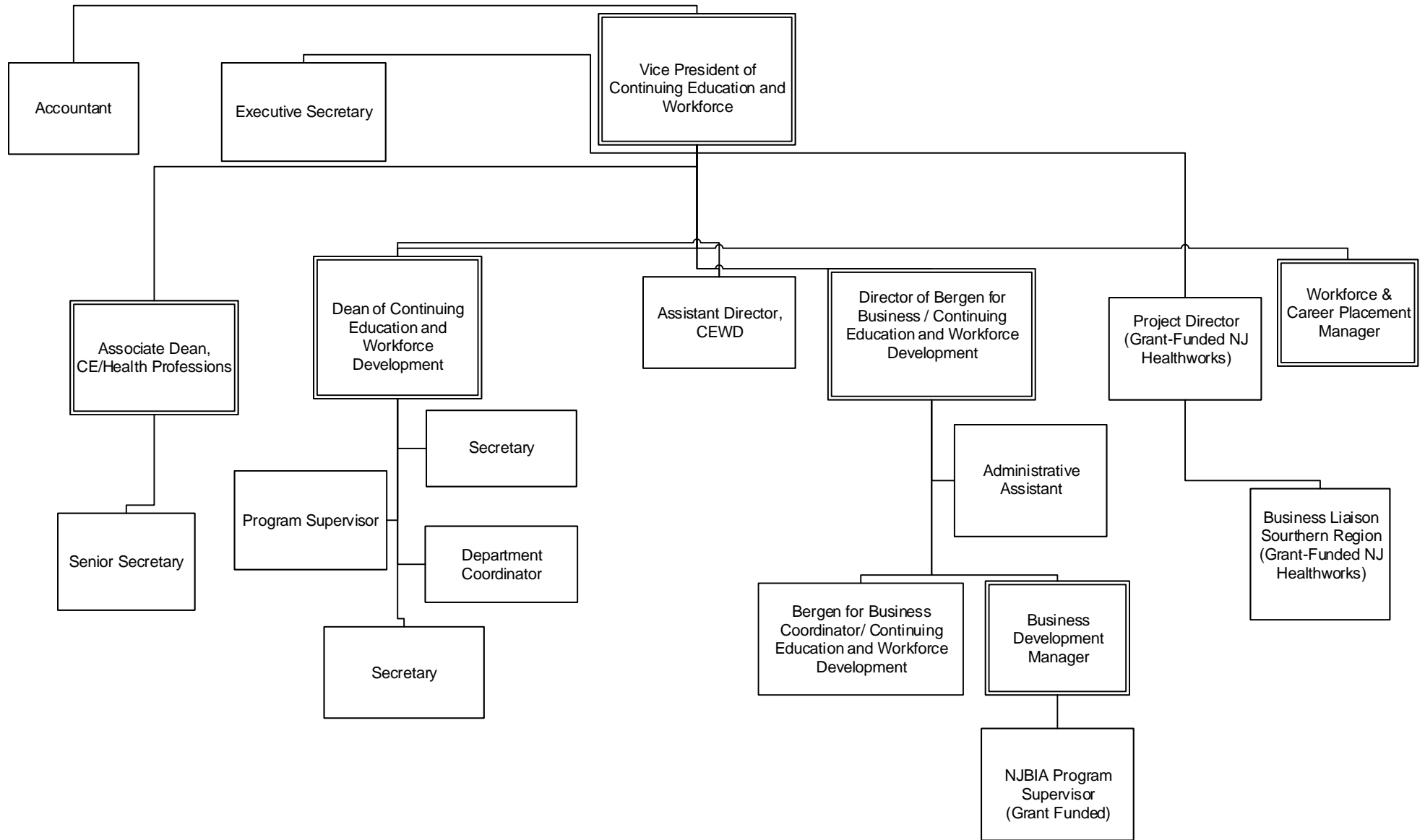
# BERGEN COMMUNITY COLLEGE

## MULTICULTURAL AFFAIRS



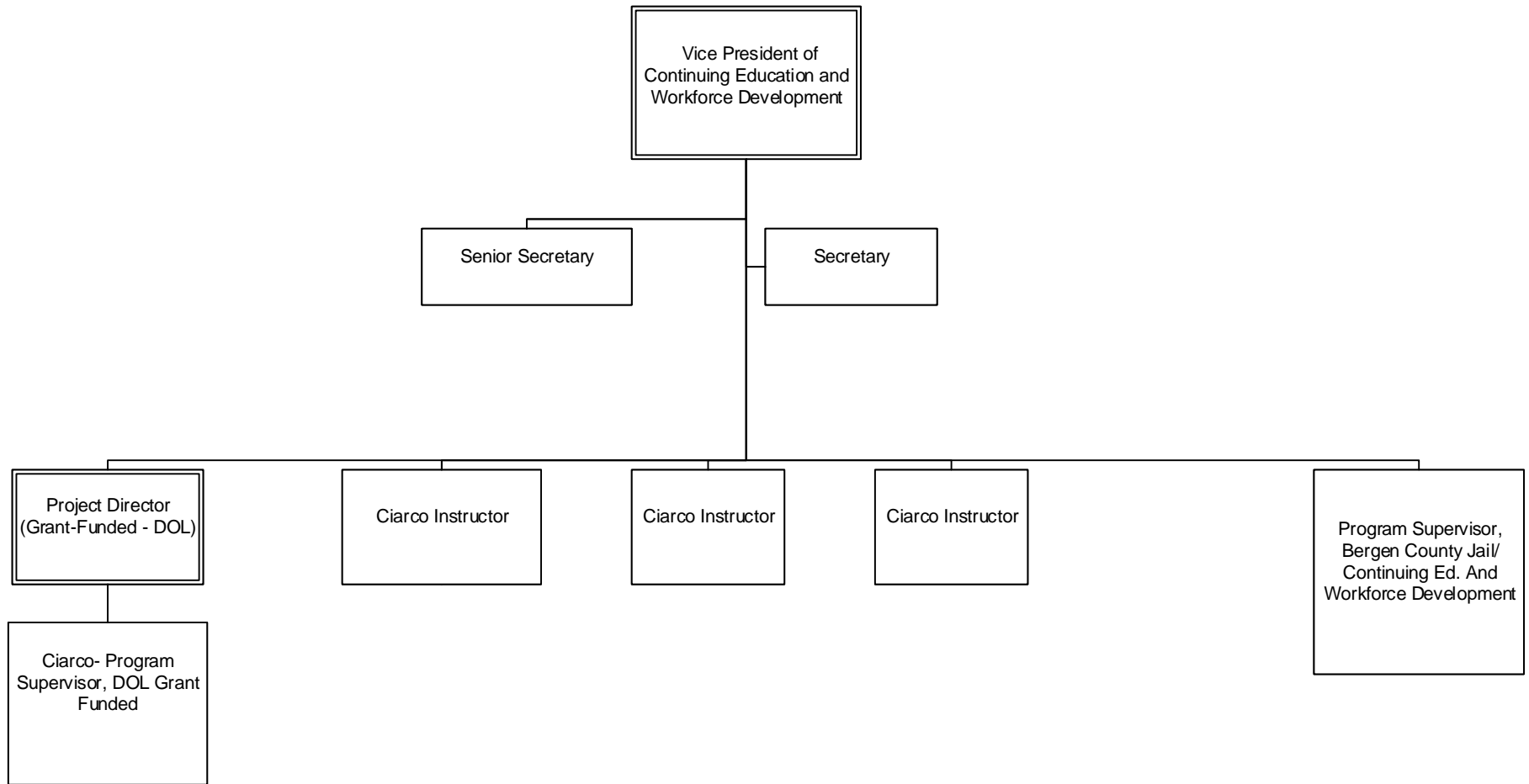
# BERGEN COMMUNITY COLLEGE

## CONTINUING EDUCATION AND WORKFORCE DEVELOPMENT



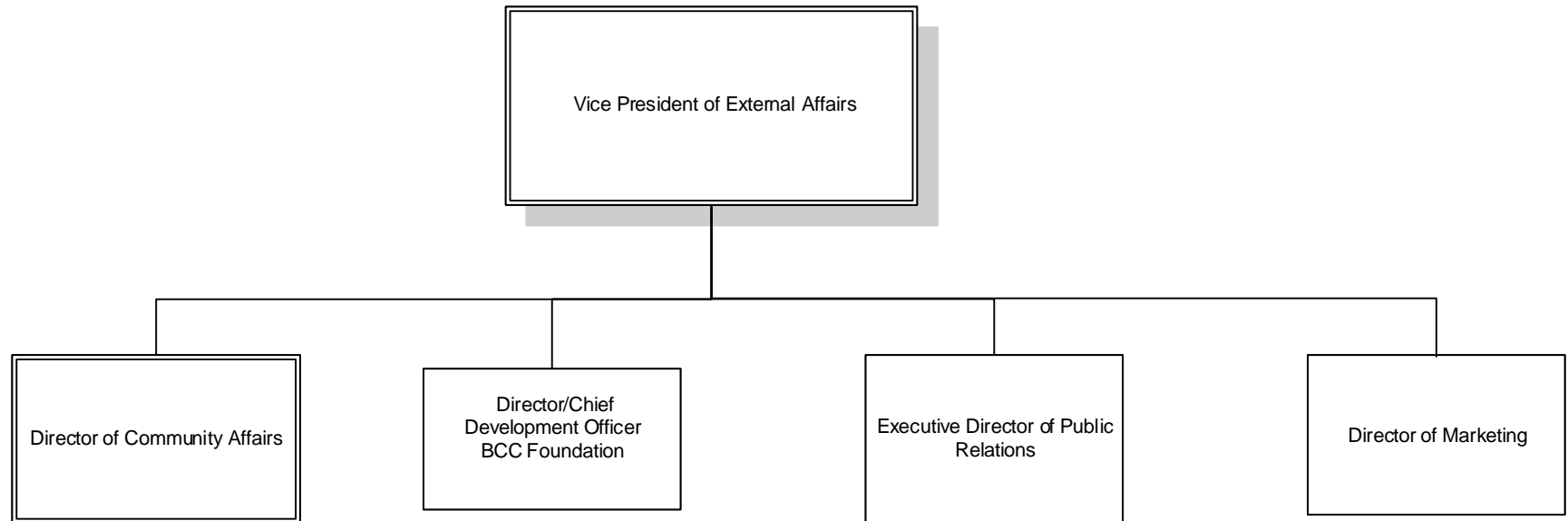


**BERGEN COMMUNITY COLLEGE**  
**CONTINUING EDUCATION AND WORKFORCE DEVELOPMENT - CIARCO**



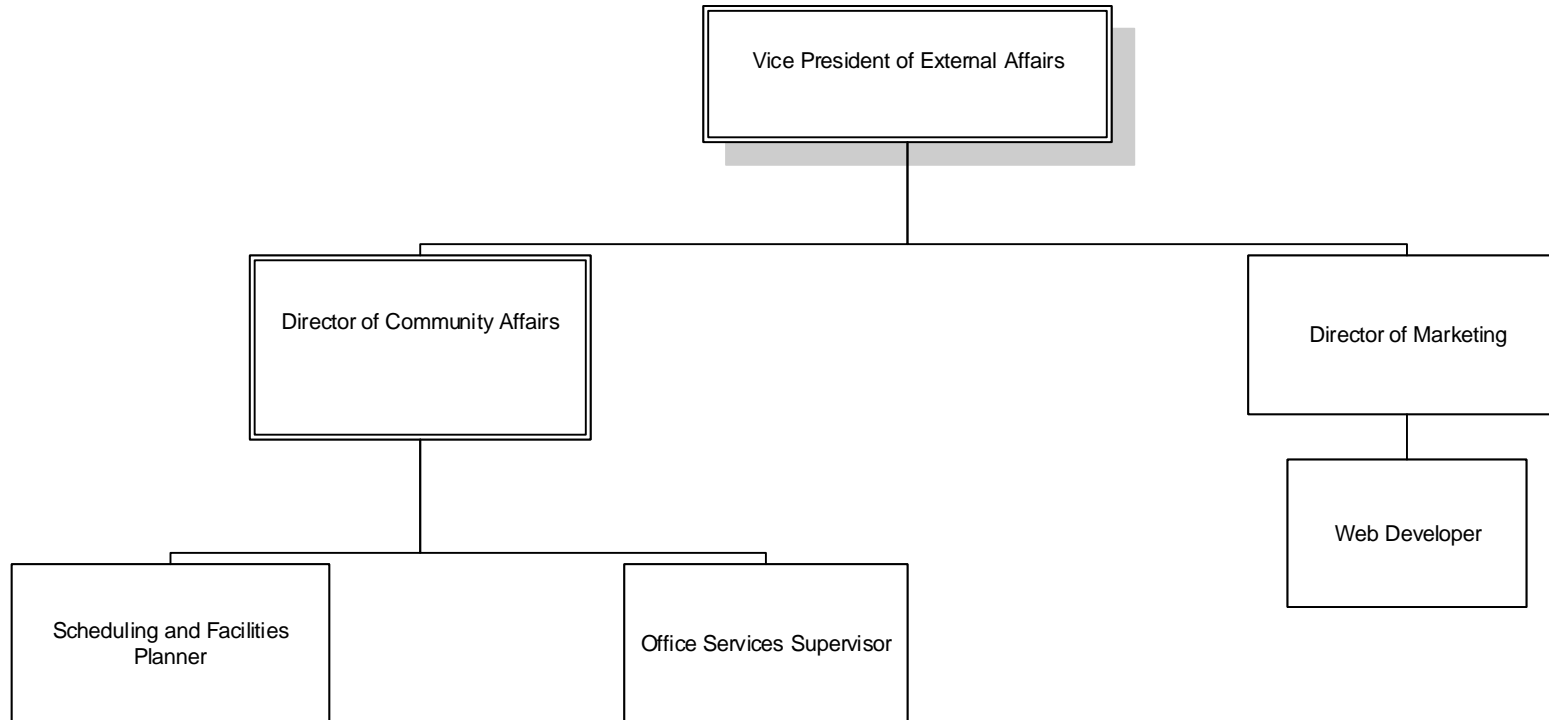
# BERGEN COMMUNITY COLLEGE

## EXTERNAL AFFAIRS

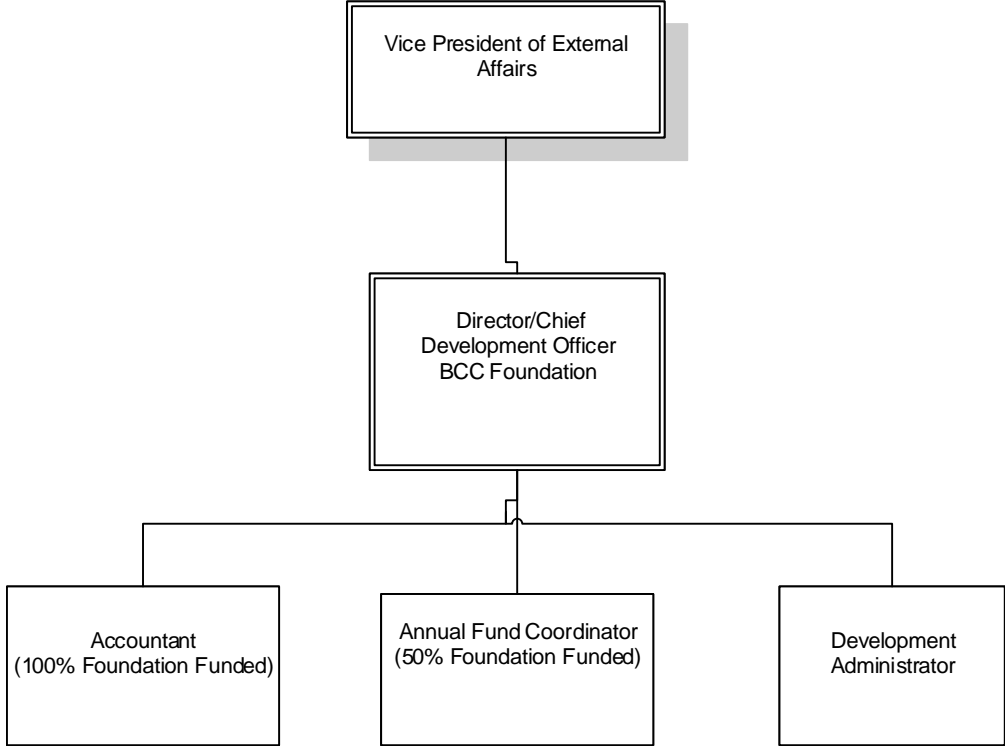


# BERGEN COMMUNITY COLLEGE

## EVENTS PLANNING

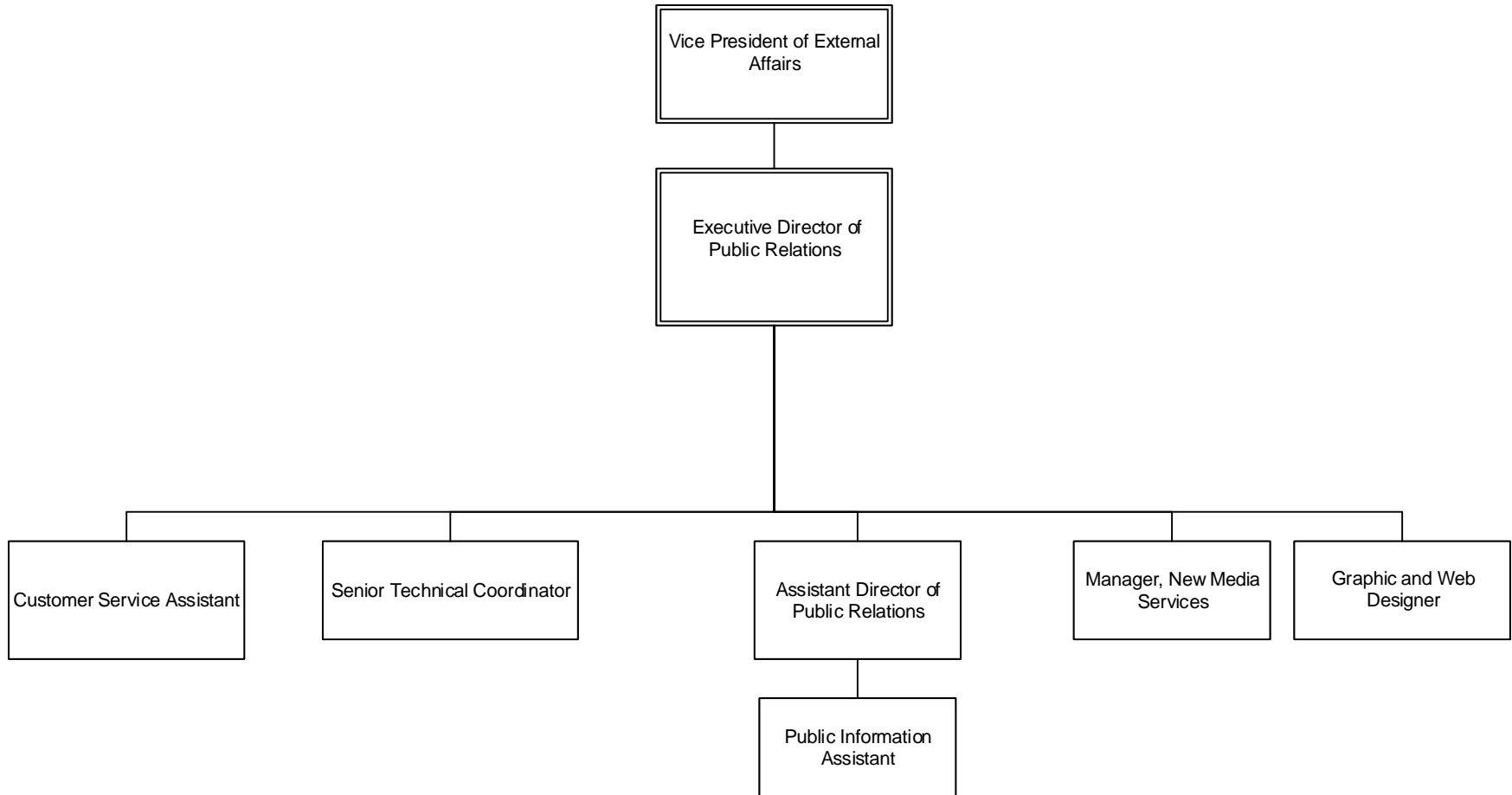


**BERGEN COMMUNITY COLLEGE**  
**BERGEN COMMUNITY COLLEGE FOUNDATION**



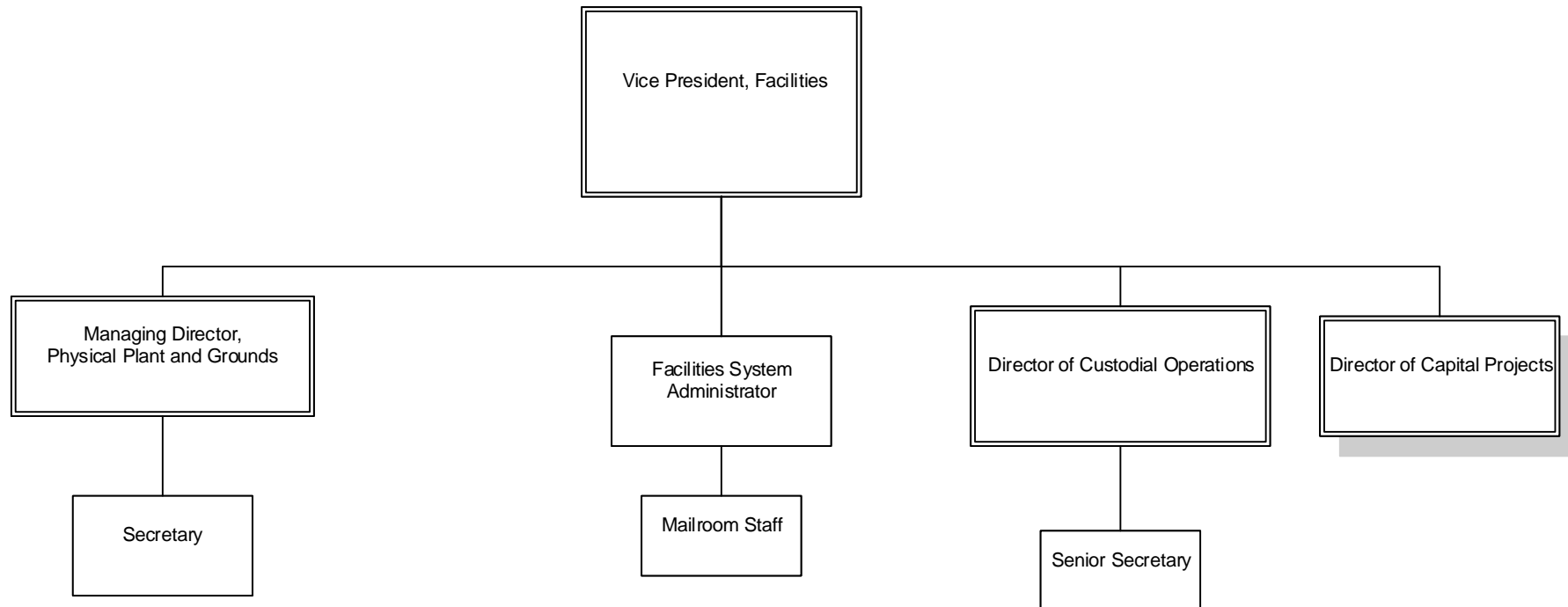
# BERGEN COMMUNITY COLLEGE

## PUBLIC RELATIONS

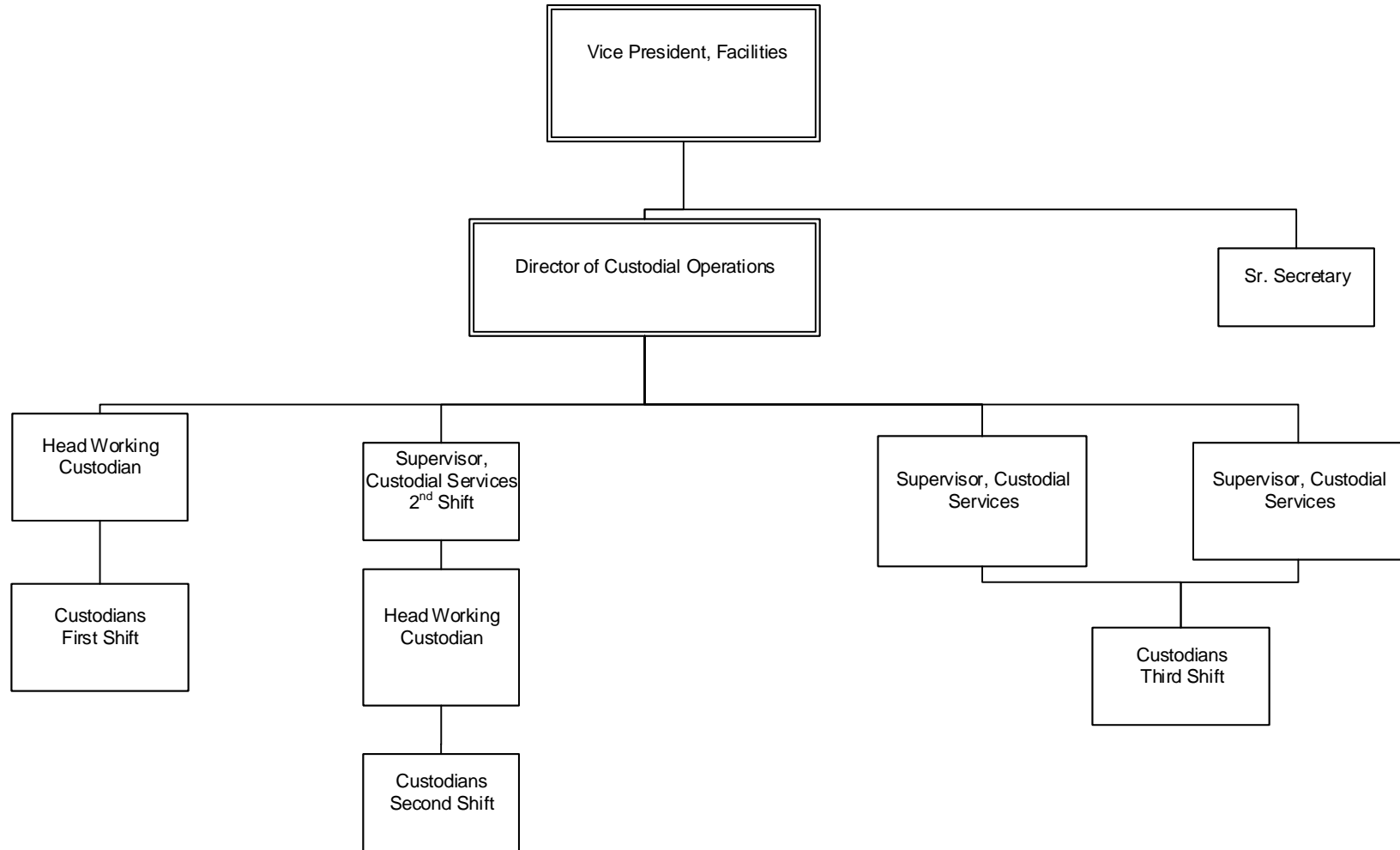


# BERGEN COMMUNITY COLLEGE

## FACILITIES

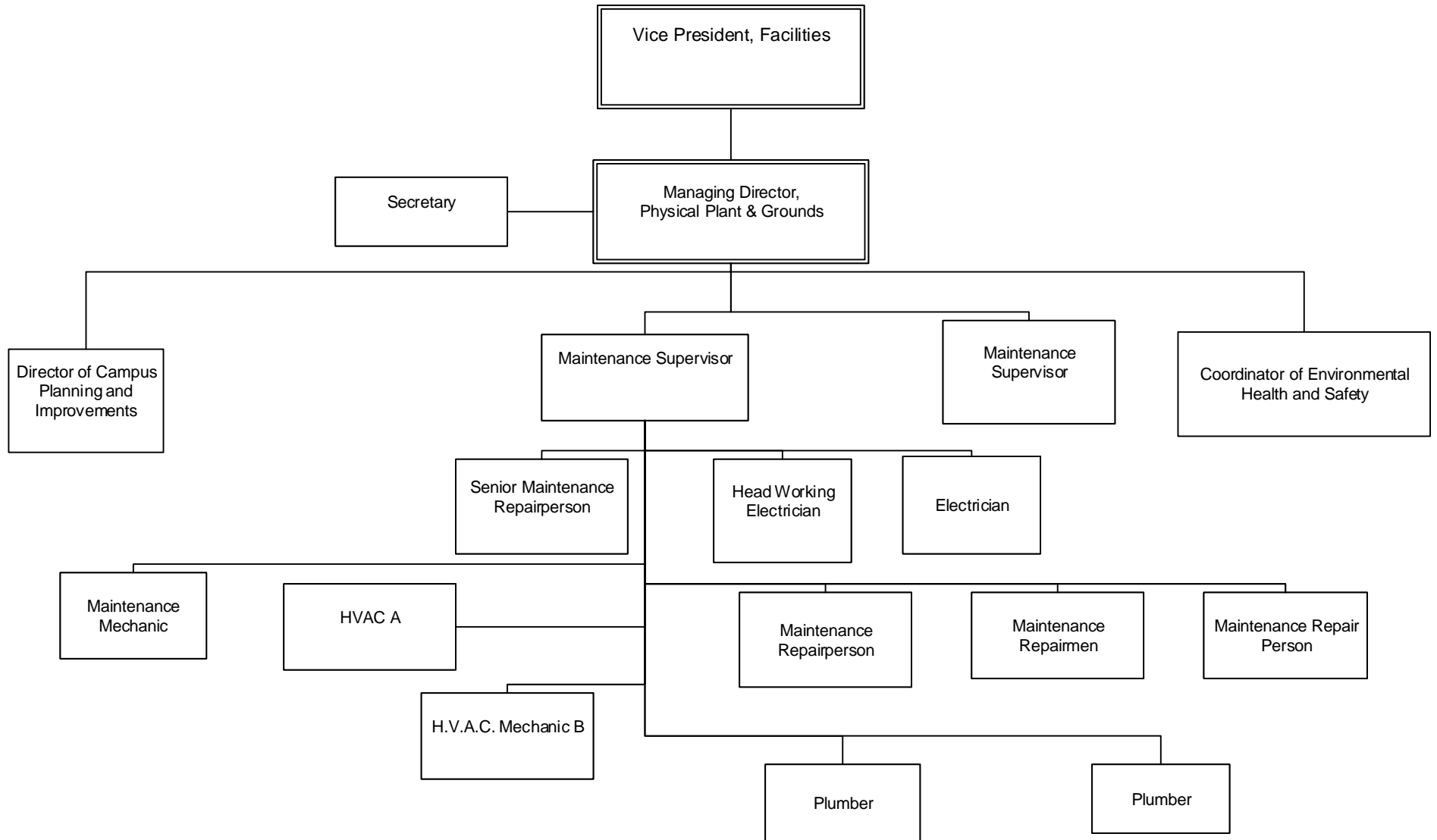


# BERGEN COMMUNITY COLLEGE FACILITIES



# BERGEN COMMUNITY COLLEGE

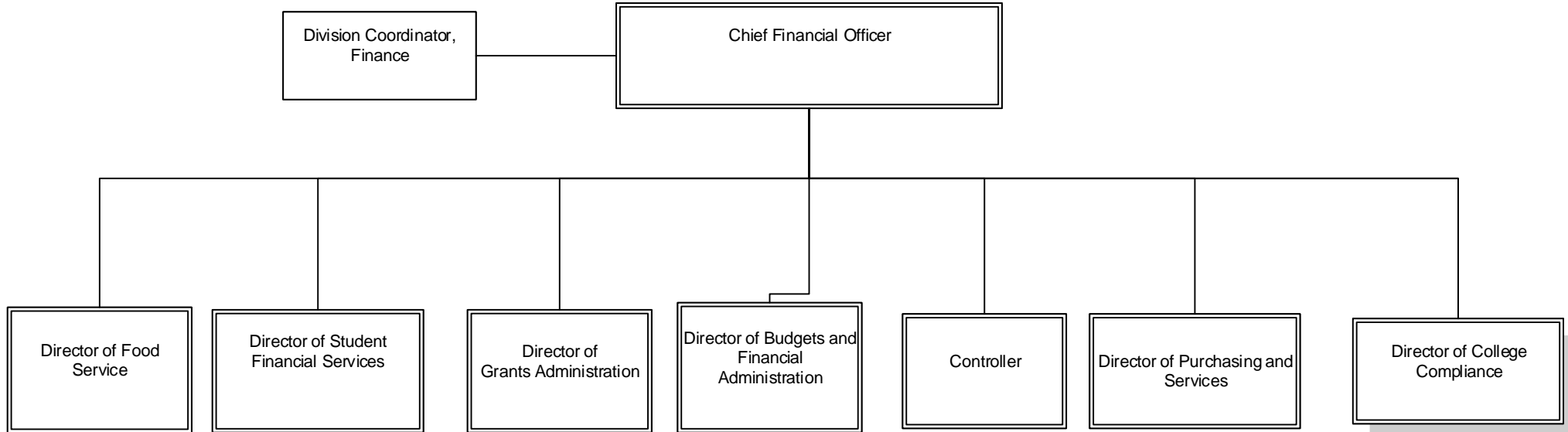
## FACILITIES





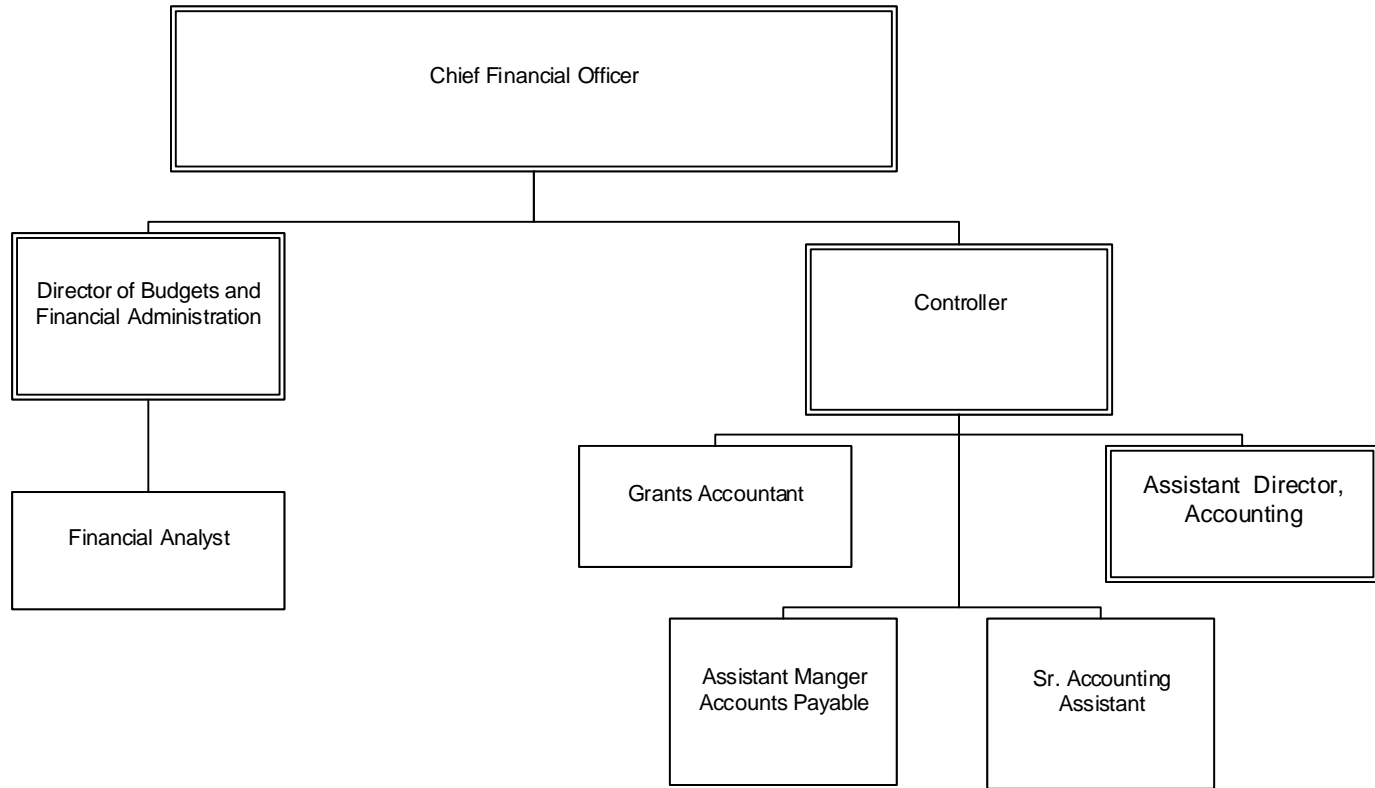
# BERGEN COMMUNITY COLLEGE

## FINANCE



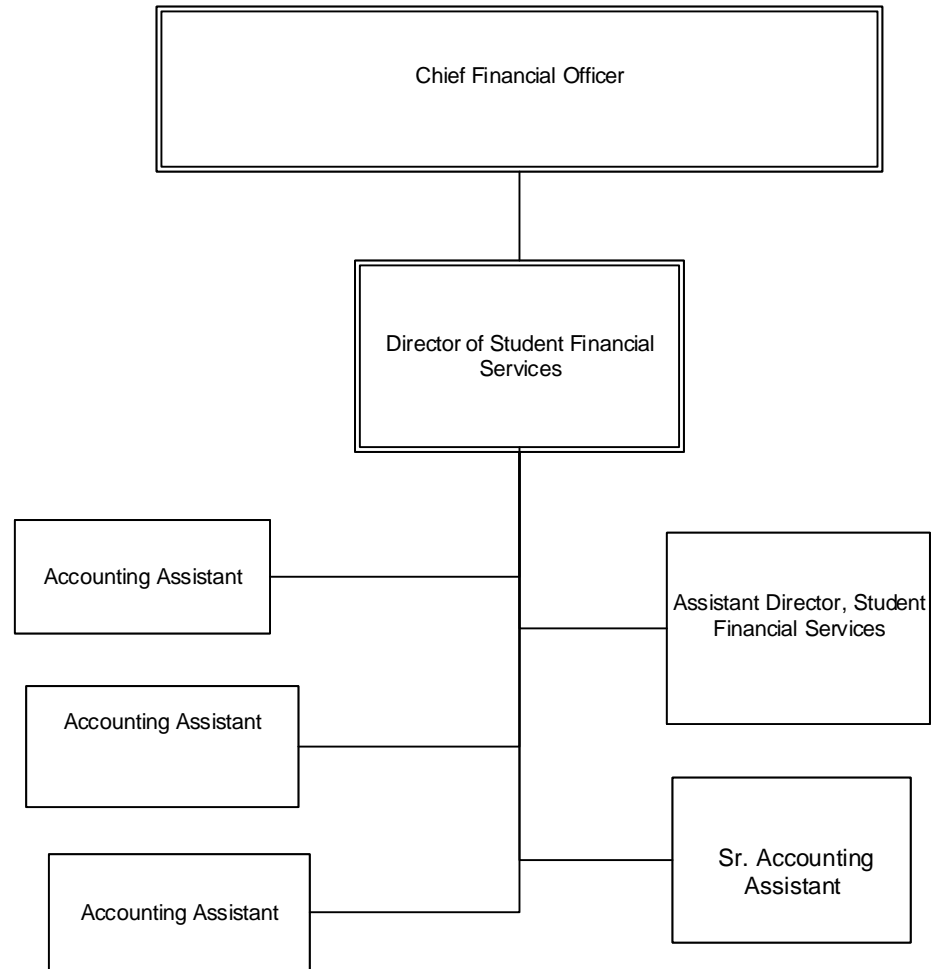
# BERGEN COMMUNITY COLLEGE

## ACCOUNTING AND BUDGET



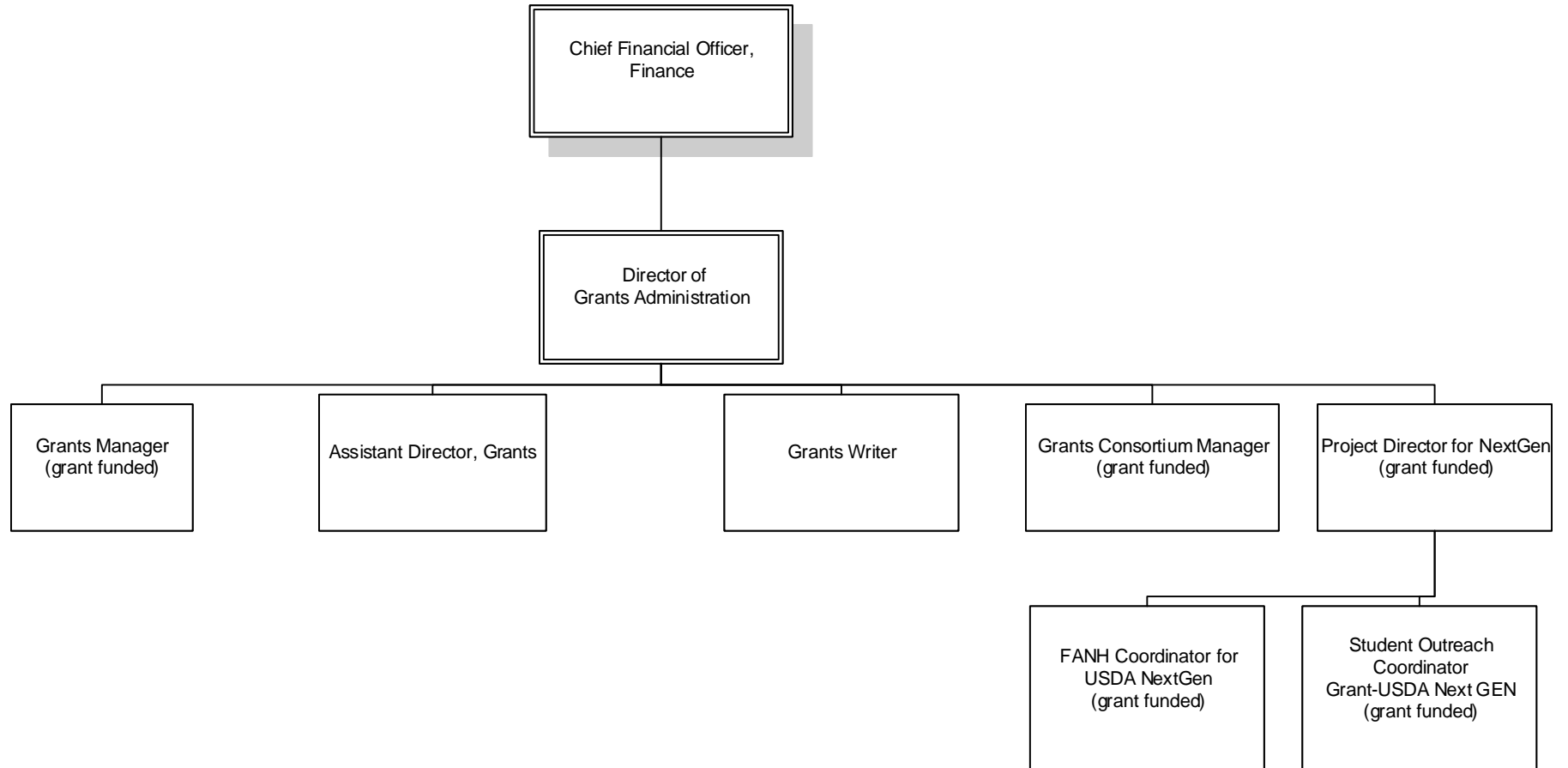
# BERGEN COMMUNITY COLLEGE

## BURSAR



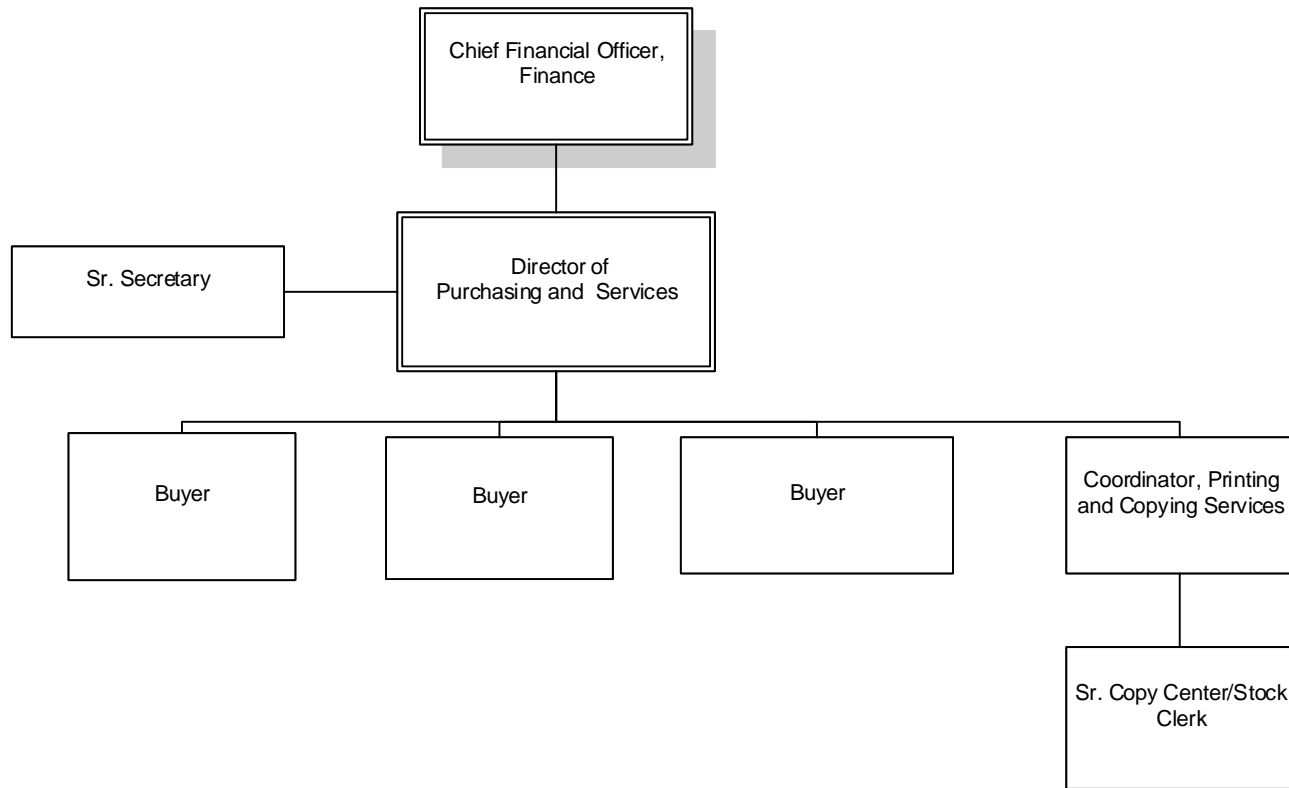
# BERGEN COMMUNITY COLLEGE

## GRANTS ADMINISTRATION



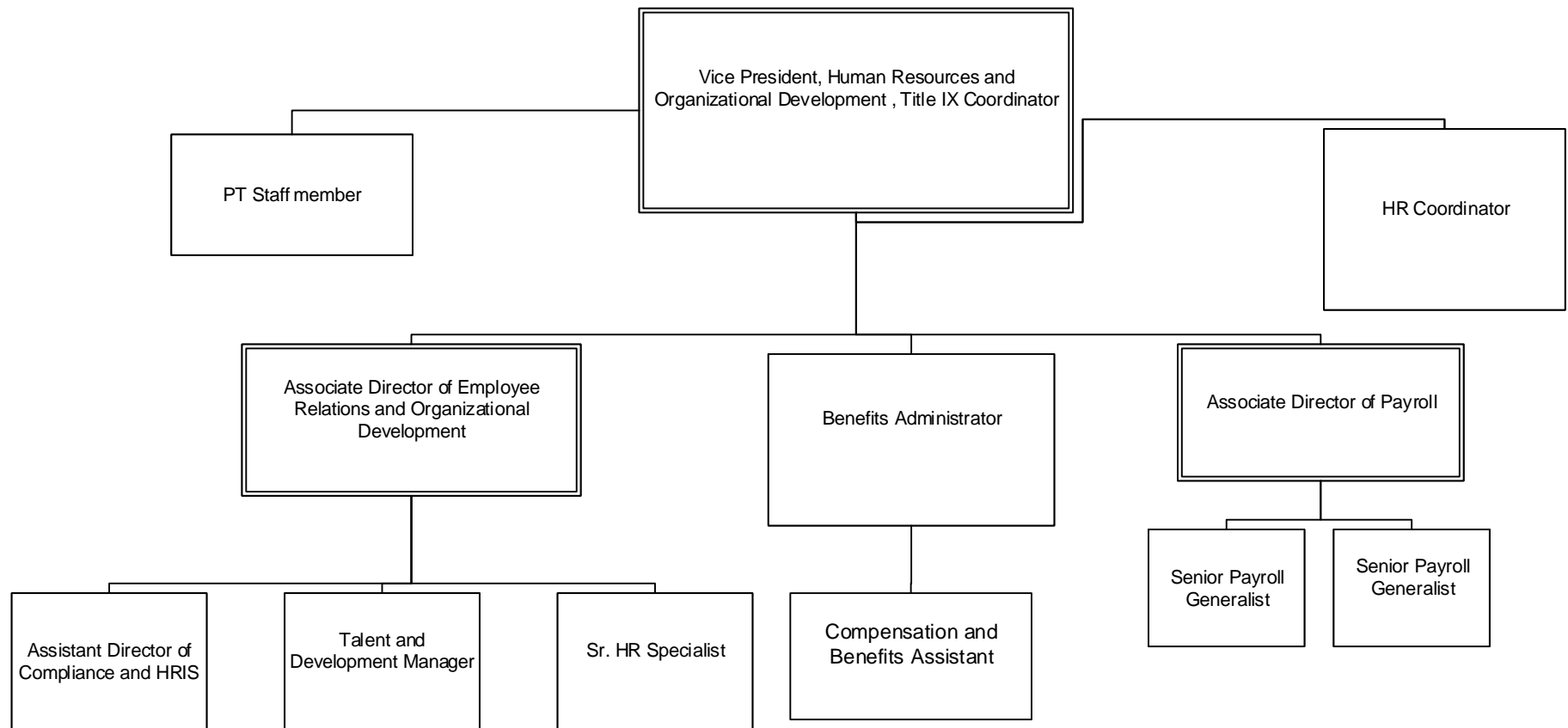
# BERGEN COMMUNITY COLLEGE

## PURCHASING AND SERVICES



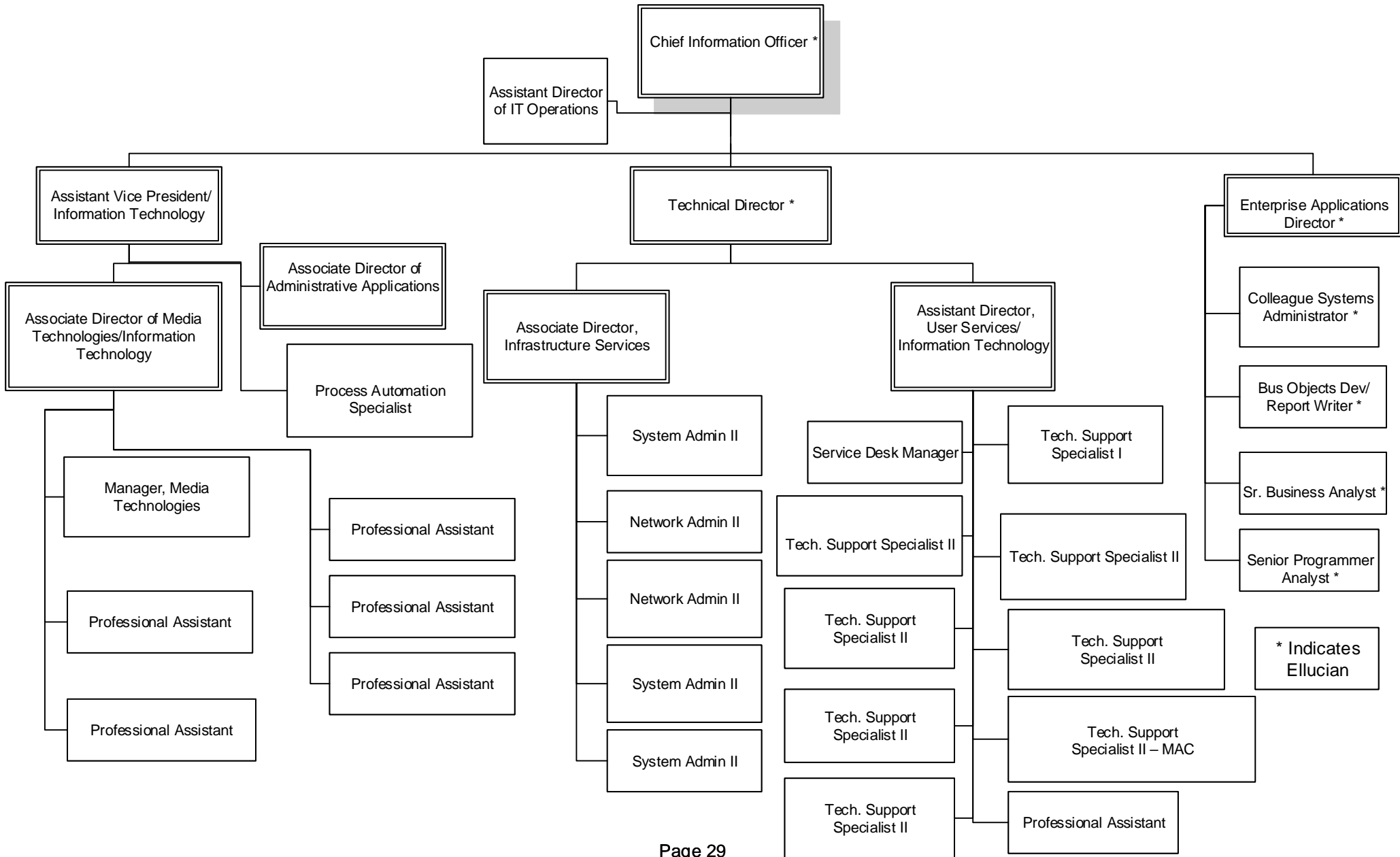
# BERGEN COMMUNITY COLLEGE

## HUMAN RESOURCES AND EMPLOYEE RELATIONS

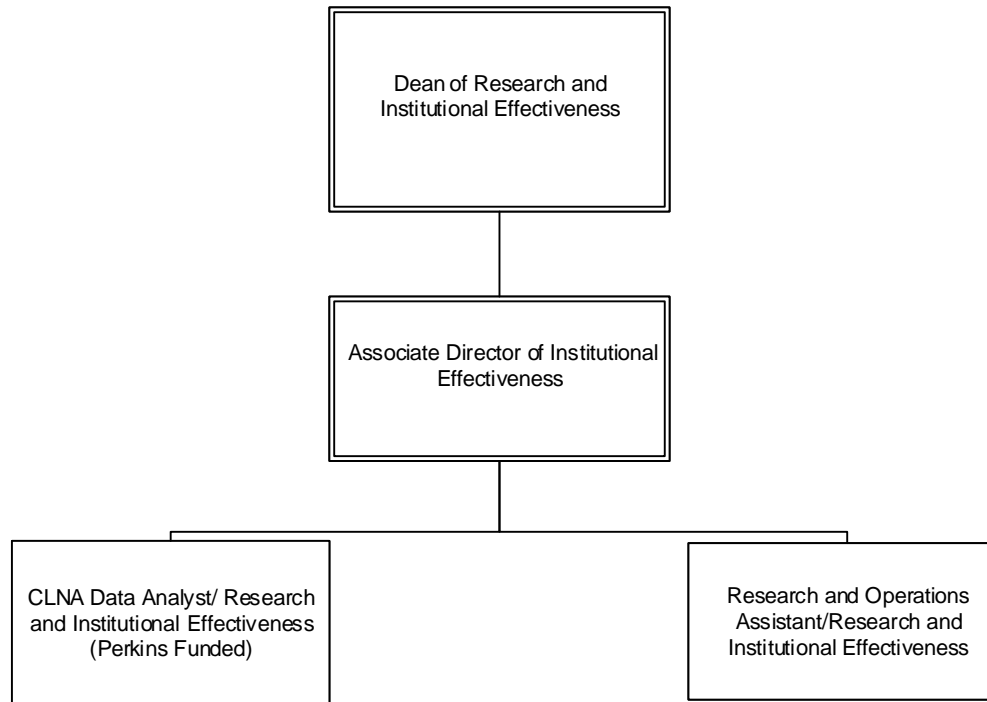


# BERGEN COMMUNITY COLLEGE

## INFORMATION TECHNOLOGIES



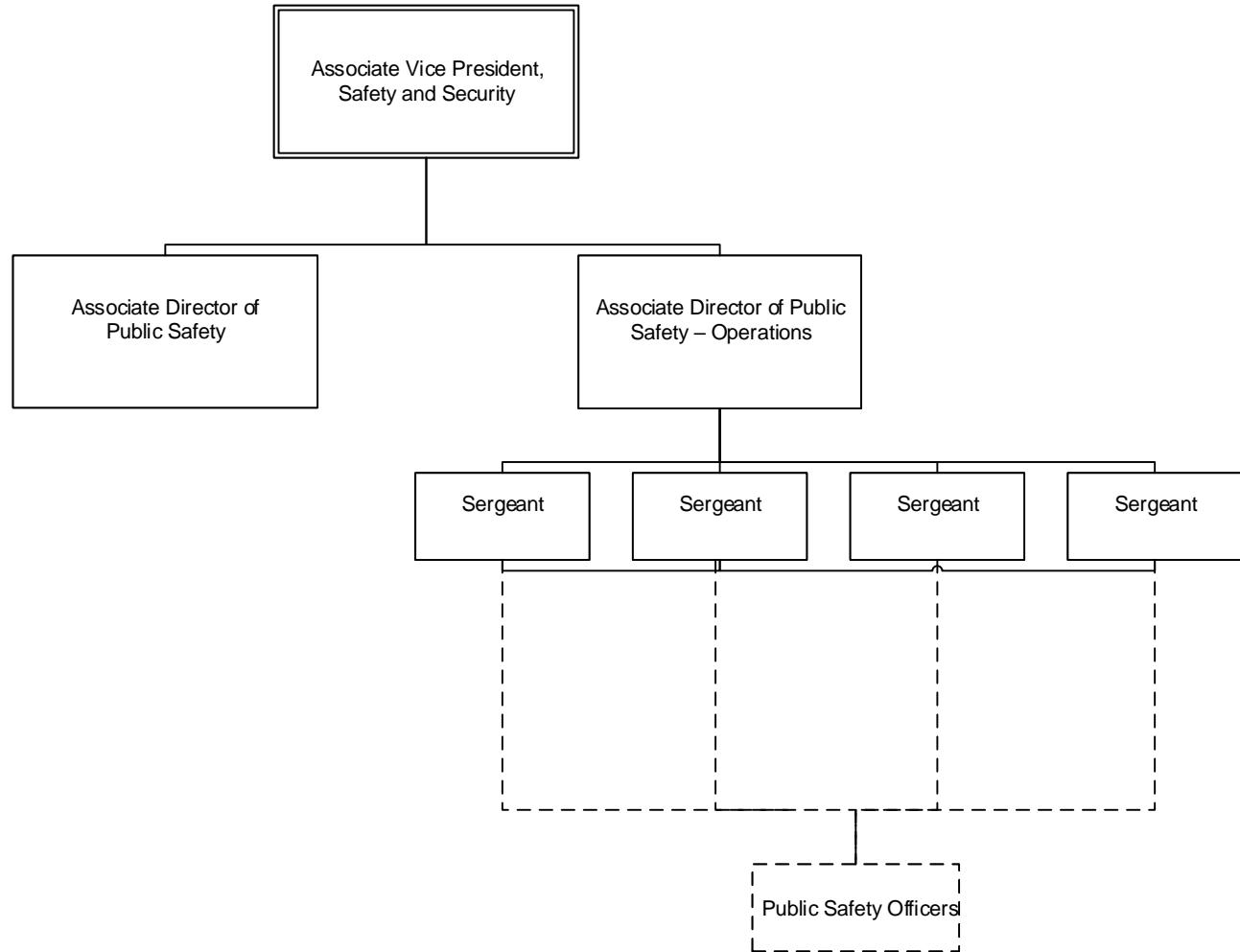
**BERGEN COMMUNITY COLLEGE**  
**RESEARCH AND INSTITUTIONAL EFFECTIVENESS**





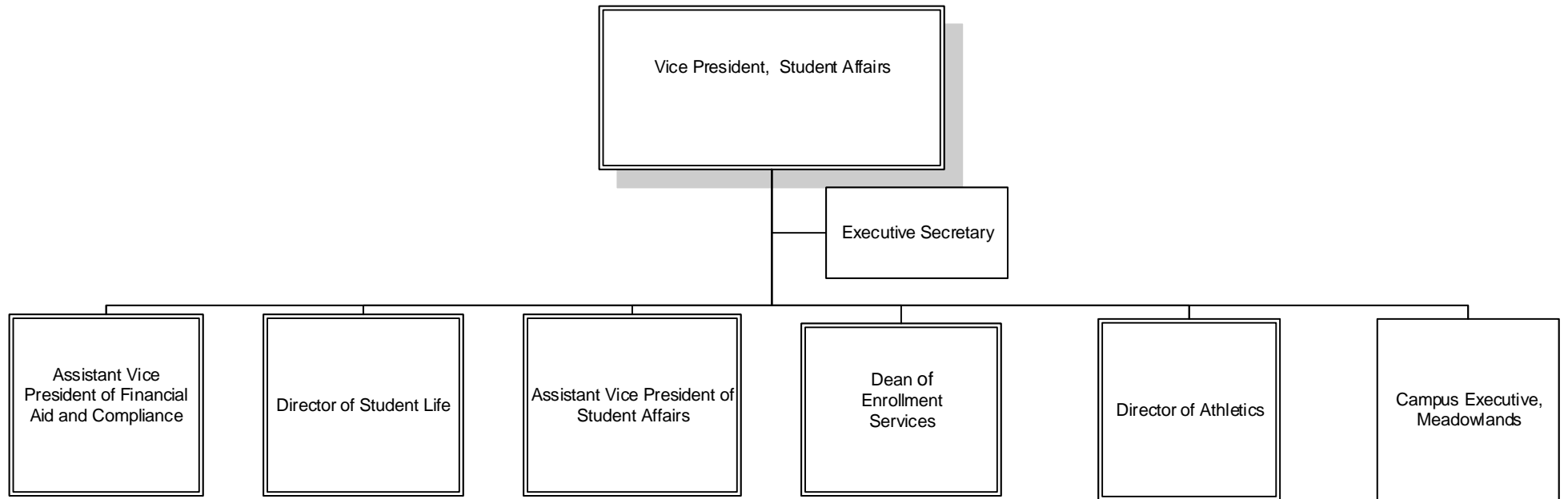
# BERGEN COMMUNITY COLLEGE

## SAFETY AND SECURITY



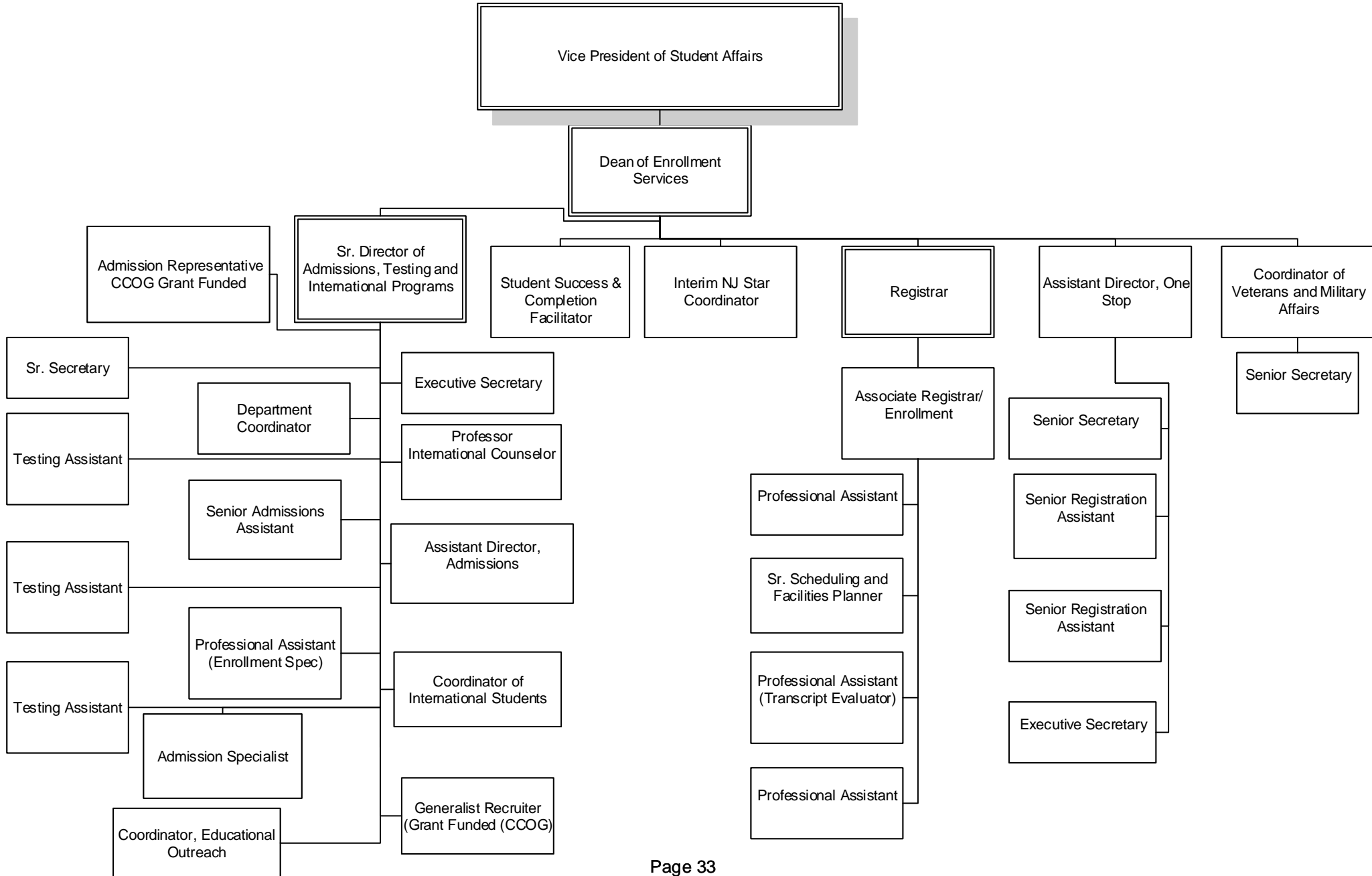
# BERGEN COMMUNITY COLLEGE

## STUDENT AFFAIRS



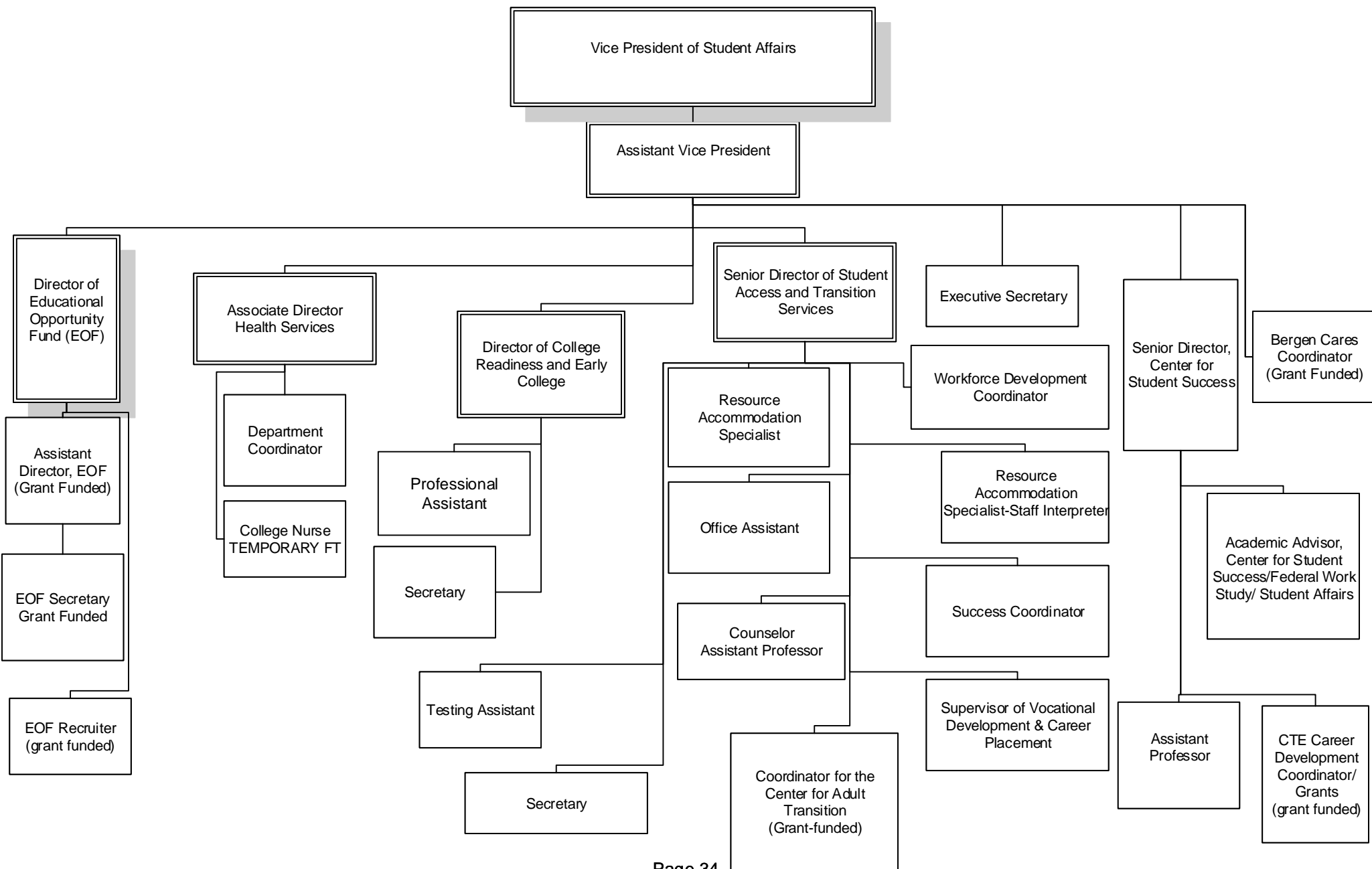
# BERGEN COMMUNITY COLLEGE

## ENROLLMENT SERVICES



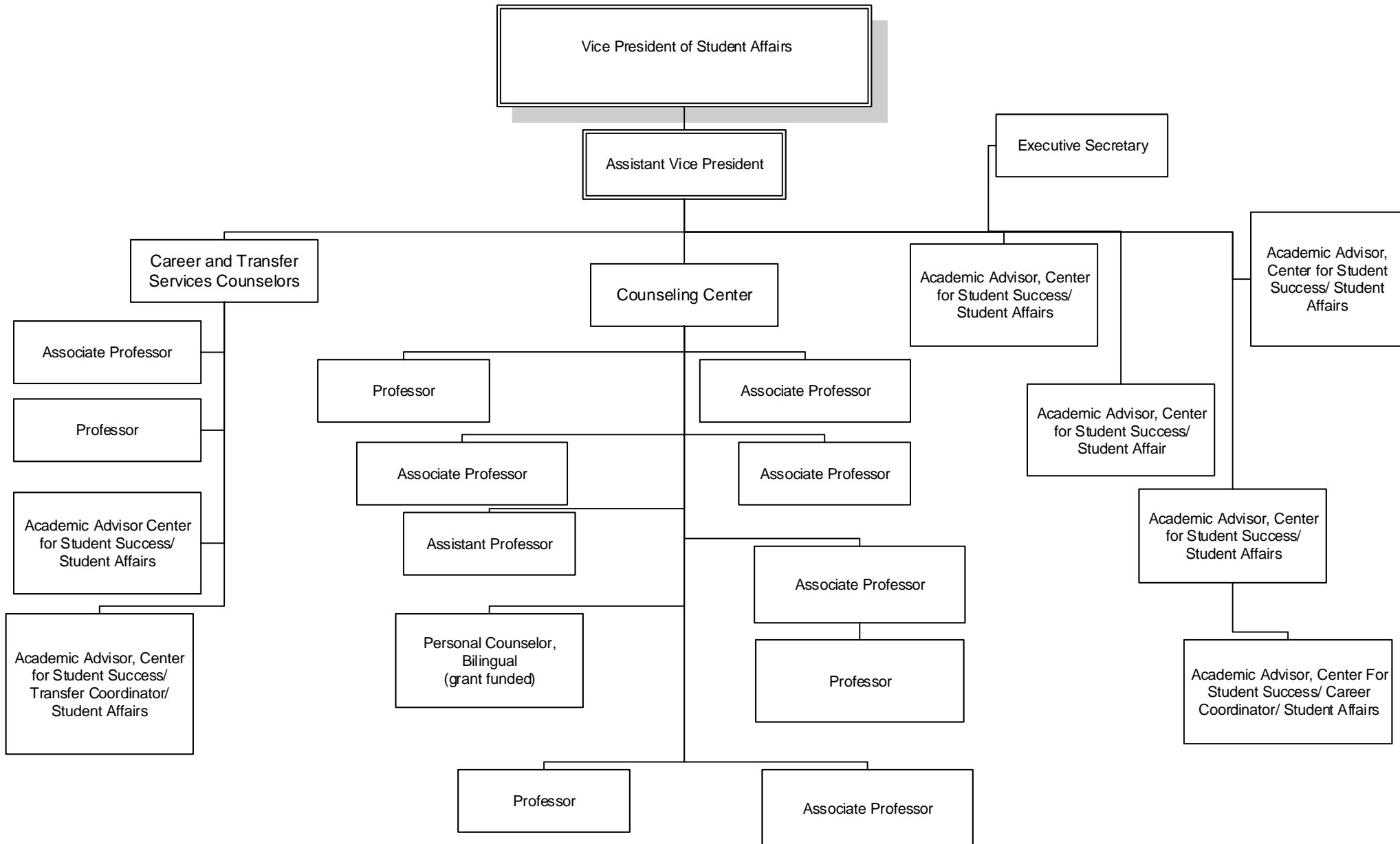
# BERGEN COMMUNITY COLLEGE

## STUDENT SUPPORT SERVICES



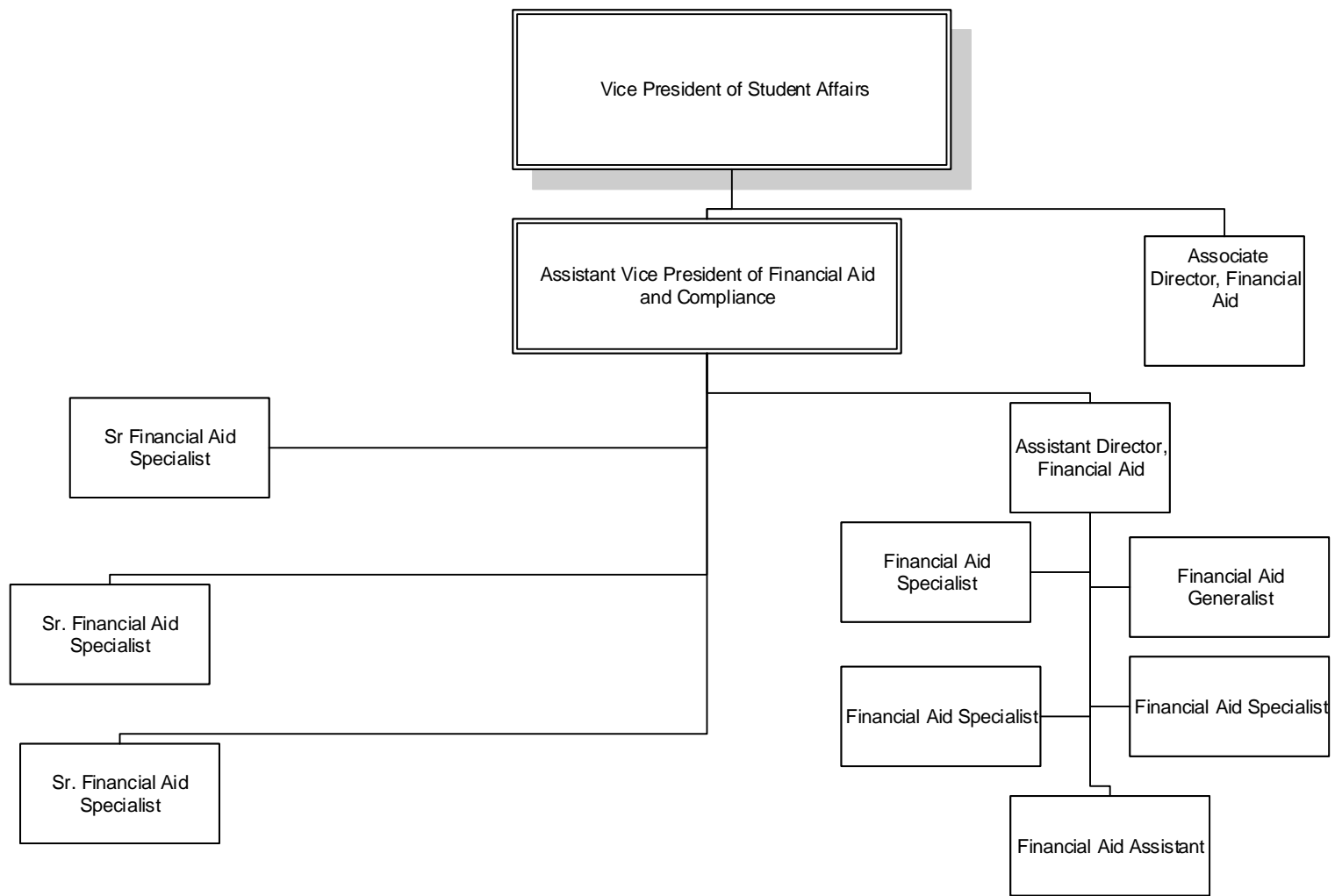
# BERGEN COMMUNITY COLLEGE

## CAREER AND TRANSFER SERVICES/COUNSELING CENTER



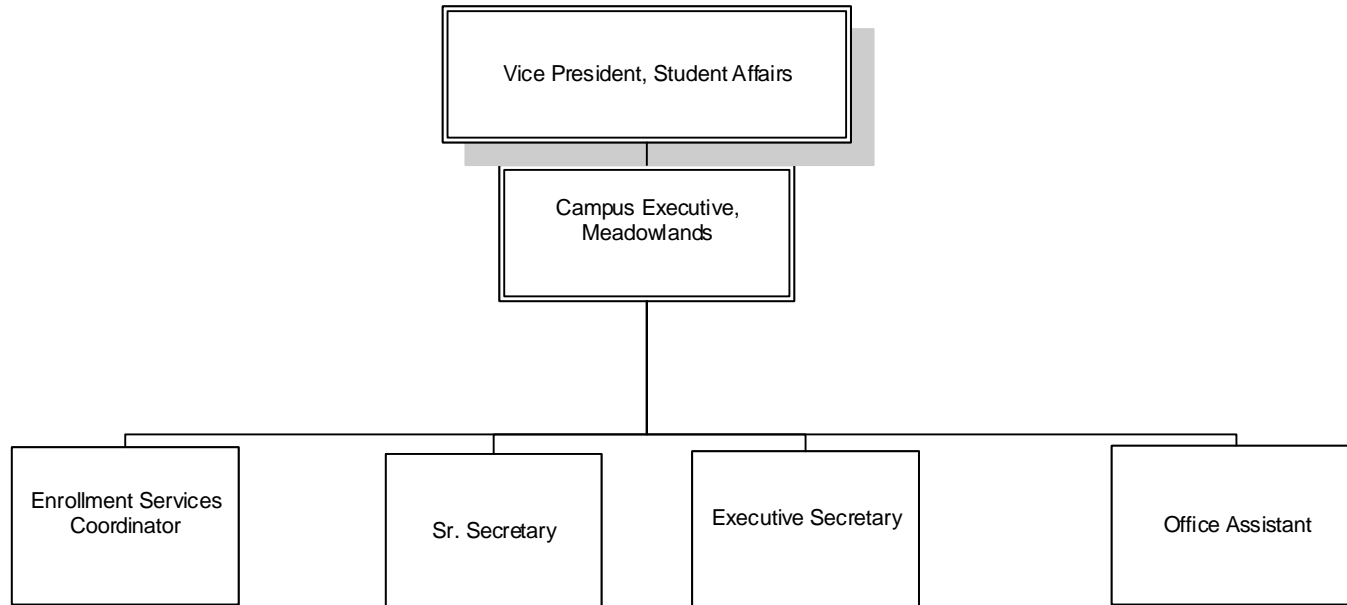
# BERGEN COMMUNITY COLLEGE

## FINANCIAL AID



# BERGEN COMMUNITY COLLEGE

## OFF-CAMPUS SITES



# BERGEN COMMUNITY COLLEGE

## STUDENT LIFE AND CONDUCT

