

BERGEN COMMUNITY COLLEGE

FINANCIAL AID/ORGANIZATION/BUDGET/FACULTY/GRADUATES/DEGREES/CITIZENSHIP/TRANSFER/
LYNDHURST/PARAMUS/CIARCO/TENURE/POPULATION/QUALITY/PLANNING/VISION/DATA/STUDENTS/
FACTS/FALL/IR/HYBRID/ONLINE/INFORMATION/FISCAL/DIVISIONS/SECTIONS/PROGRAMS/CREDITS/
MISSION/ADJUNCT/AGE/GENDER/RACE/FULL-TIME/PART-TIME/RESIDENCE/FINANCIAL AID/ORGANIZ
BUDGET/FACULTY/GRADUATES/DEGREES/CITIZENSHIP/TRANSFER/LYNDHURST/PARAMUS/CIARCO/TENU
POPULATION/QUALITY/PLANNING/VISION/DATA/STUDENTS/FACTS/FALL/IR/HYBRID/ONLINE
INFORMATION/FISCAL/DIVISIONS/SECTIONS/PROGRAMS/CREDITS/MISSION/ADJUNCT/AGE/GENDER/
RACE/FULL-TIME/PART-TIME/RESIDENCE/FINANCIAL AID/ORGANIZATION/BUDGET/FACULTY/GRADUATES
DEGREES/CITIZENSHIP/TRANSFER/LYNDHURST/PARAMUS/CIARCO/TENURE/POPULATION/QUALITY/
PLANNING/VISION/DATA/STUDENTS/FACTS/FALL/IR/HYBRID/ONLINE/INFORMATION/FISCAL/DIVISION
SECTIONS/PROGRAMS/CREDITS/MISSION/ADJUNCT/AGE/GENDER/RACE/FULL-TIME/PART-TIME
RESIDENCE/FINANCIAL AID/ORGANIZATION/BUDGET/FACULTY/GRADUATES/DEGREES/CITIZENSHIP
TRANSFER/LYNDHURST/PARAMUS/CIARCO/TENURE/POPULATION/QUALITY/PLANNING/VISION/DATA/
STUDENTS/FACTS/FALL/IR/HYBRID/ONLINE/INFORMATION/FISCAL/DIVISIONS/SECTIONS/PROGRAM
CREDITS/MISSION/ADJUNCT/AGE/GENDER/RACE/FULL-TIME/PART-TIME/RESIDENCE

2011-2012



Bergen
COMMUNITY COLLEGE

Center for Institutional
Effectiveness

Bergen Community College Fact Book 2011-2012



Pitkin Education Center – A-335
400 Paramus Road
Paramus, New Jersey 07652

FOREWORD

The 2011-2012 Edition of the Bergen Community College Fact Book presents data relating to enrollment, graduates, faculty and other personnel, college finances, and demographics. The Fact Book has several purposes: to provide data which may assist the administration in planning and decision making; to give the college community an overview of the student, personnel and financial profiles of the college; and to serve as a reference document which answers many of the most often-asked questions about the college.

Selected tables and graphs may be found on the Center for Institutional Effectiveness website, which can be accessed from the 'Centers' link, available from the 'About Bergen' page of the College's website: www.bergen.edu. For further details, or for data not presented here, please contact the Center for Institutional Effectiveness at the number below. Comments and suggestions for future editions of the Fact Book are welcome.

Center for Institutional Effectiveness

(201) 612-5564

<http://www.bergen.edu/pages/3535.asp>

Interim Coordinator of Assessment and Strategic Planning

Joann Marzocco

Associate Director of Institutional Research

Tonia McKoy

Research Assistant

Jack Latona

Technology Coordinator

Vannette John

Administrative Assistant

Alma DeLucca

Administrative Assistant

Paige Shaffer

TABLE OF CONTENTS

A. GENERAL INFORMATION

About Bergen	1
Mission and Vision Statements	2
Board of Trustees, 2011-2012	3
Administrative Organization Chart	4
Administration	5
Programs by Degree	6
Accreditation	7

B. STUDENT CHARACTERISTICS

Highlights	8
Enrollment by Race/Ethnicity, Fall 2007 - Fall 2011	9
Enrollment by Age, Gender and Status, Fall 2011	10
Enrollment by County of Residence, Fall 2011	11
Bergen County Student Residency Map, Fall 2011	12
Enrollment by Country of Citizenship, Fall 2009 - Fall 2011	13
Enrollment by Status, Fall 1968 - Fall 2011	14
Graph, Enrollment by Status, Fall 2007 - Fall 2011	15
Enrollment by Day/Evening, Fall 2007 - Fall 2011	16
Distance Learning Enrollment, Fall 2007 - Fall 2011	17
Enrollment by Location, Fall 2011	18

C. PROGRAM DATA

Highlights	19
Student Population by Degree Program, Fall 1976 - Fall 2011	20
Graph, Student Population by Degree Program, Fall 2007 - Fall 2011	21
Student Population by Degree Program and Registration Status, Fall 2011	22
Associate in Arts, Number of Declared Majors, Fall 2007- Fall 2011	23
Associate in Science, Number of Declared Majors, Fall 2007 - Fall 2011	24
Associate in Applied Science, Number of Declared Majors, Fall 2007 - 2011 ...	25
Certificate Programs, Number of Declared Majors, Fall 2007 - Fall 2011	26
Transfer Programs, Five Year Change	27
Career Programs, Five Year Change	28

D. NUMBER OF CREDITS

Highlights	29
Number of Credits by Student Status, Fall 2011	30
Number of Credits by Degree Program, Fall 2011	31
Distance Education Credits, Fall 2011	32
Number of Credits by Location, Fall 2011	33

E. NON-CREDIT ENROLLMENT

Highlights	34
Continuing Education Enrollment, Fiscal Year 2011	35
Ciarco Learning Center Enrollment, Fiscal Year 2011	36
Institute for Learning in Retirement Enrollment, Fiscal Year 2011	37

F. DEGREES AWARDED

Highlights	38
Degrees and Certificates Awarded, 2002 - 2011	39
Associate in Arts, Degrees Awarded, 2007 - 2011	40
Associate in Science, Degrees Awarded, 2007 - 2011	41
Associate in Applied Science, Degrees Awarded, 2007 - 2011	42
Certificates Awarded 2007 - 2011	43

G. FACULTY CHARACTERISTICS

Highlights	44
Full-Time Faculty by Division, Rank and Gender, Fall 2011	45
Full-Time Faculty by Race/Ethnicity and Gender, Fall 2011	46
Full-Time Faculty by Tenure and Division, Fall 2011	47
Graph, Full-Time Faculty by Tenure and Division, Fall 2011	48
Adjunct Faculty Gender and Race/Ethnicity, Fall 2011	49

H. FINANCIAL DATA

Highlights	50
Current Funds Budgeted, Revenues, Fiscal Years 2011 and 2012	51
Graph, Current Funds Budgeted, Revenues, Fiscal Year 2012	52
Current Funds Budgeted, Expenditures, Fiscal Years 2011 and 2012	53
Graph, Current Funds Budgeted, Expenditures, Fiscal Year 2012	54
Student Financial Aid, Recipients and Amount of Award, Fiscal Year 2011	55

General Information

About Bergen



Bergen Community College was founded in 1965 to satisfy the region's need for a convenient, affordable and comprehensive higher education destination. The College currently enrolls over 17,000 students in credit courses. The College's three instructional sites in Paramus (main campus), Hackensack (Ciarco Learning Center) and Lyndhurst (Bergen Community College at the Meadowlands) offer exceptional opportunities for students enrolled in degree, continuing education and adult education programs.

The College boasts an accomplished faculty, cutting-edge facilities, and opportunities for cultural awareness, civic engagement and service-learning.

Graduating students not only utilize the statewide transfer agreement to attend New Jersey's four-year schools, but use Bergen's reputation as a top community college to propel them to institutions nationwide. Students in career programs enter the workforce with the skills they need in order to succeed.

Within the last decade, Bergen has seen considerable growth in both size and facilities. The number of enrolled credit students has seen an increase of over 40%, and the number of degrees awarded by year has nearly doubled since 2001. The most recent additions to the campus include the Technology Education Center and West Hall, which is home to Bergen's Educational Broadcast Center, Media Technologies, and arts and communications instructional facilities. The college also boasts a Science Annex containing expanded and updated science laboratory facilities and most recently it purchased and renovated a complex in Lyndhurst, NJ that serves as the current home for BCC at the Meadowlands.

BERGEN COMMUNITY COLLEGE

Mission and Vision Statements

Vision

As a college of choice, Bergen Community College provides a comfort level that enables students of all abilities to mature as learners and engaged citizens. A leading community college in the nation, the college creates a stimulating, rigorous, and inclusive learning environment. Use of innovative technology enhances learning experiences and widens access to learning media. Community and business leaders value the college as a reliable partner and principal provider of work force development. Bergen County residents of all ages and cultural backgrounds appreciate the college as a hub of their educational and cultural activities.

Mission

Bergen Community College educates a diverse student population in a supportive and challenging academic environment that fosters civility and respect. The College offers a comprehensive set of accessible, affordable, and high-quality credit and non-credit courses as well as degree and non-degree programs. Bergen provides life-long learning opportunities for all members of the community. The College responds to community needs through work force training and continuing education, and by developing programs for employers.

BERGEN COMMUNITY COLLEGE

Board of Trustees
2011-2012

E. Carter Corrison
Chairman

Cid D. Wilson
Vice Chairman

Dorothy L. Blakeslee
Treasurer

Malcolm J. Curtis
James D. Demetrakis
Richard Dressel
James R. Napolitano
Michael J. Neglia
Germaine M. Ortiz
Philip J. Ciarco III

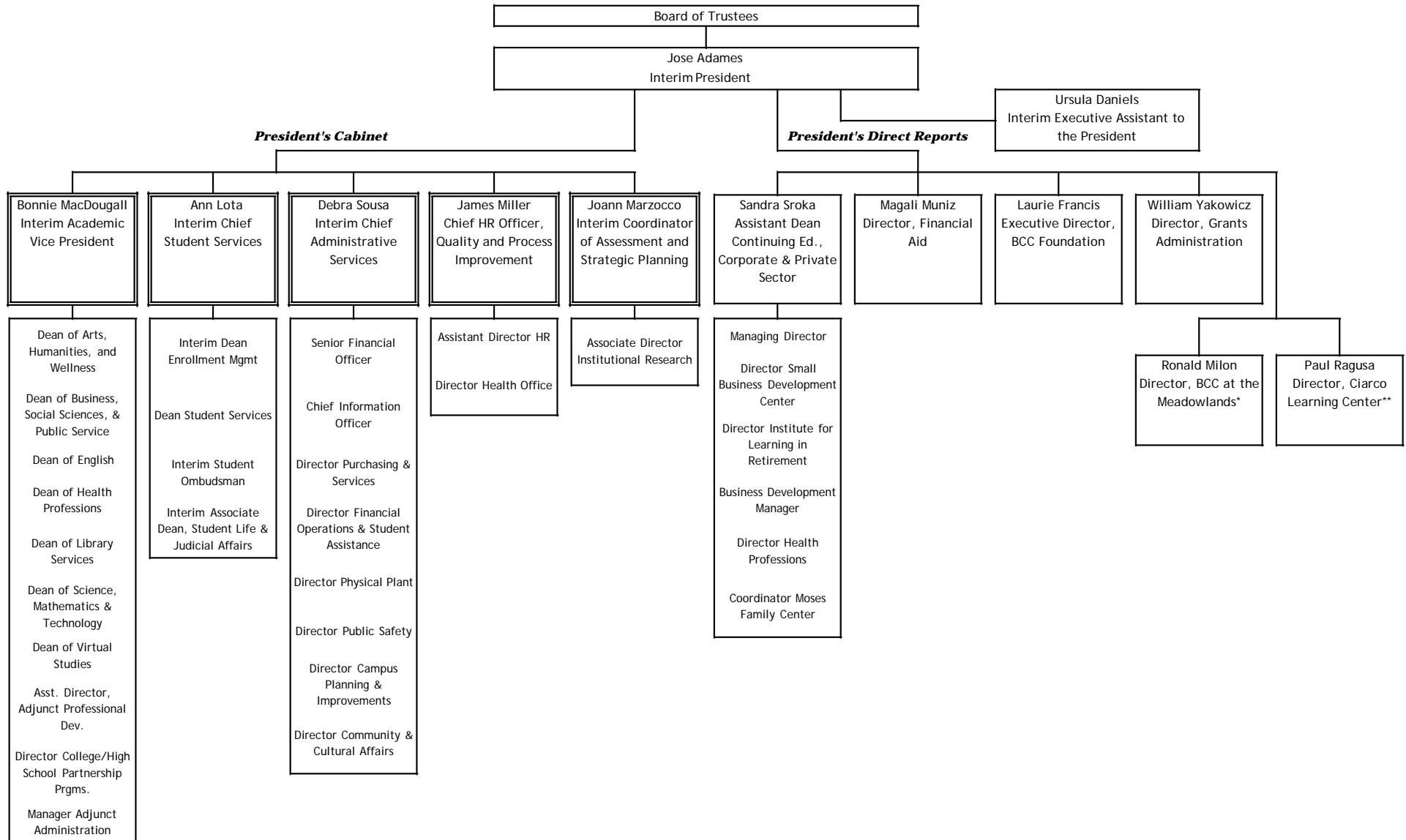
John Zeuner
Alumni Representative

Wendy Dodge
Secretary to the Board of Trustees
Office Manager, President's Office

BERGEN COMMUNITY COLLEGE

Administrative Organization Chart

FY 2011-2012



*Also reports to Continuing Education, Corporate, and Private Sector

**Also reports to Student Services

BERGEN COMMUNITY COLLEGE

President's Cabinet

Fall 2011

Jose A. Adames	Interim President
Ursula Daniels	Executive Assistant to the President
Ann Lota	Interim Chief Officer <i>Student Services</i>
Bonnie McDougall	Interim Academic Vice President <i>Academic Affairs</i>
Joann Marzocco	Interim Coordinator <i>Assessment & Strategic Planning</i>
James R. Miller	Chief Officer <i>Human Resources, Quality & Process Improvement</i>
Debra Sousa	Interim Chief Officer <i>Administrative Services</i>

BERGEN COMMUNITY COLLEGE

Programs by Degree, 2011-2012

TRANSFER PROGRAMS

Associate in Arts

Liberal Arts:

General Curriculum
Cinema Studies
Communication Arts
Economics
History
Literature
Philosophy
Political Science
Psychology
Religion
Social Sciences
Sociology
Women's Studies
World Languages and Cultures

Fine and Performing Arts:

Art
Music Arts
General
Computer-Based Recording
Electronic Music
Music Business
Theatre Arts
General Theatre Arts
Acting
Dance
Technical Production

Associate in Science

Natural Sciences or Mathematics:

General Curriculum
Biology
Biotechnology
Chemistry
Computer Science
Mathematics
Physics

Engineering Science

Professional Studies:

General Curriculum
Broadcasting
Business Administration:
Accounting
International Trade
Management
Marketing
Non-Profit Management
Criminal Justice
Education
Exercise Science
Information Technology
Journalism
Labor Studies
Social Work

CAREER PROGRAMS

Associate in Applied Sciences

Art:

Computer Animation
Graphic Design/Computer
Graphics

Business Administration:

Accounting
Banking, Credit & Finance
Paralegal Studies

Business Technologies:

Hotel/Restaurant/Hospitality:
Catering/Banquet Management
Hospitality Management
Information Technology
Networking Administration
Office Technology
Web Development and
Management

Health Professions:

Dental Hygiene
Diagnostic Medical Sonography
Health Science
Medical Office Assistant
Radiography
Respiratory Therapy
Veterinary Technology

Human Services:

Career Ladder: Education/Child
Development
Correctional Studies
Early Childhood Education
Law Enforcement Studies

Industrial and Design

Technologies:

Drafting & Design Technology
Electronics Technology
General Engineering Technology
Manufacturing Technology
Technical Studies

Medical Informatics

Nursing:

Day and Evening Sequences
LDN/AND Career Mobility Track

Science Technology:

Environmental Technology
Horticulture
Landscape Design/Building
Science Laboratory Technology

Certificate Programs

Computer Aided Drafting (CAD)
Computer Animation
Computer Graphics
Computer Science
Computer Technical/Help Desk Support
Culinary Arts
Culinary Science
Database Programming and Administration
E-Commerce: Business Emphasis
Environmental Technology
Exercise Science
Event Planning & Management
Floral Design
Grounds Management
Hospitality Management
Labor Studies
Landscaping
Legal Nurse Consultant
Medical Office Administrative Assistant
Music Business
Music Technology
Music Theatre
Office Technology
Piano Instruction/Pedagogy
Radiation Therapy Technology
Small Business Management
Surgical Technology
Transfer Studies: Liberal Arts
Transfer Studies: Science, Technology, and
Professional Studies
U.S. Studies
Vascular Technology

Certificate of Achievement Programs

Accounting Assistant
Baking
Biotechnology
Business Paraprofessional Management
Career Ladder: Education/Child
Development
Catering
Commercial Music Production
Environmental Technology
Finance
Geographic Information Systems (GIS)
Homeland Security & Emergency
Management
Hospitality Operations
Machine Tooling
Manufacturing Design
Marketing Assistant
Network Security
Non-profit Management
Private Security
Professional Cooking
Quality Assurance
Real Estate
Retailing
Special Imaging for Radiologic Technologists
Sports Management
Sports Merchandising

BERGEN COMMUNITY COLLEGE
Accreditation

COLLEGE

Commission on Higher Education of the Middle States Association of Colleges and Schools

PROGRAMS

Nursing

National League for Nursing Accrediting Commission, Inc

Dental Hygiene

Commission on Dental Accreditation of the American Dental Association

Diagnostic Medical Sonography

Joint Review Committee on Education in Diagnostic Medical Sonography

Radiography

Joint Review Committee on Education in Radiologic Technology

Respiratory Therapy

Commission on Accreditation for Respiratory Care

Medical Office Assistant

Commission on Accreditation of Allied Health Education Programs

Surgical Technology

Commission on Accreditation of Allied Health Education Programs

Radiation Therapy

Joint Review Committee on Education in Radiologic Technology

Veterinary Technology

American Veterinary Medical Association

In addition, the Legal Assistant Program and Legal Nurse Consultant Program have been granted approval by the American Bar Association. The Nursing Program has been approved by the New Jersey State Board of Nursing.

Student Characteristics

Student Characteristics Highlights

- ✚ Tenth-day student enrollment at Bergen Community College increased from 17,197 in Fall 2010 to 17,271 in Fall 2011, a new high for the College. This change represents a small increase of 0.4% in enrollment.
- ✚ Continuing a recent trend, the number of full-time students exceeded the number of part-time students in the Fall 2011 semester. The percentage of full-time students has increased in five years from 53% in Fall 2007 to 58% in Fall 2011.
- ✚ The racial/ethnic characteristics of the student body remained relatively consistent from Fall 2010 to Fall 2011. The percentage of students who identified as Hispanic/Latino increased to 33.5% of the total student population.
- ✚ Students from over 130 different countries of citizenship attended BCC in Fall 2011, with the largest groups of non-US students hailing from Korea, Poland, Colombia, the Dominican Republic, and Ecuador.
- ✚ Enrollment in distance learning courses (online and hybrid) continued to increase. As with the previous fall semester, 24% of the students were enrolled in a distance education course in Fall 2011.

BERGEN COMMUNITY COLLEGE

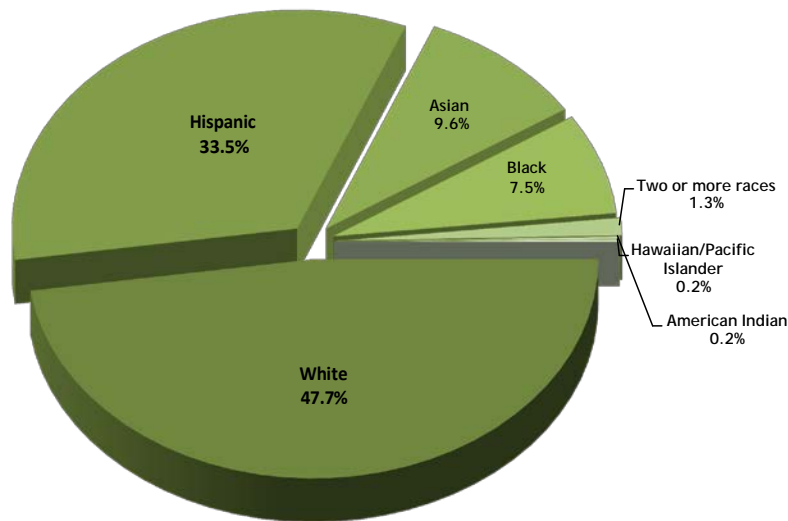
Enrollment by Race/Ethnicity

Fall 2007 – Fall 2011

	Fall 2007		Fall 2008		Fall 2009	
	#	%*	#	%*	#	%*
American Indian	30	0.2%	30	0.2%	31	0.2%
Asian	2,119	15.0%	1,592	12.1%	1,572	11.3%
Black	1,032	7.3%	902	6.9%	999	7.2%
Hispanic	3,916	27.8%	3,958	30.2%	4,378	31.5%
White	6,986	49.6%	6,630	50.6%	6,928	49.8%
Total Known Race	14,083		13,112		13,908	
<i>Non-Resident Alien**</i>	1,234		1,190		1,290	
<i>Unknown</i>	970		981		1,271	
Total Enrollment	16,287		15,283		16,469	

	Fall 2010***			Fall 2011***		
	Hispanic	Non-Hispanic	Total	Hispanic	Non-Hispanic	Total
American Indian	6	28	34	8	30	38
Asian	18	1,514	1,532	32	1,271	1,303
Black	52	1,066	1,118	69	1,001	1,070
Hawaiian/Pacific Islander	8	12	20	10	32	42
White	266	6,734	7,000	507	6,335	6,842
Two or more races	22	94	116	23	156	179
Total Known Race	372	9,448	9,820	649	8,825	9,474
Non-Resident Alien**	253	1,092	1,345	221	1,071	1,292
Unknown/Unspecified	4,166	1,866	6,032	3,804	2,701	6,505
Total Enrollment	4,791	12,406	17,197	4,674	12,597	17,271

Fall 2011 Total Known Race/Ethnicity



*Percent of students with known race/ethnicity, excluding non-resident alien

**Category includes individuals of diverse ethnic/racial backgrounds

***Updated to reflect new IPEDs Race/Ethnicity reporting guidelines

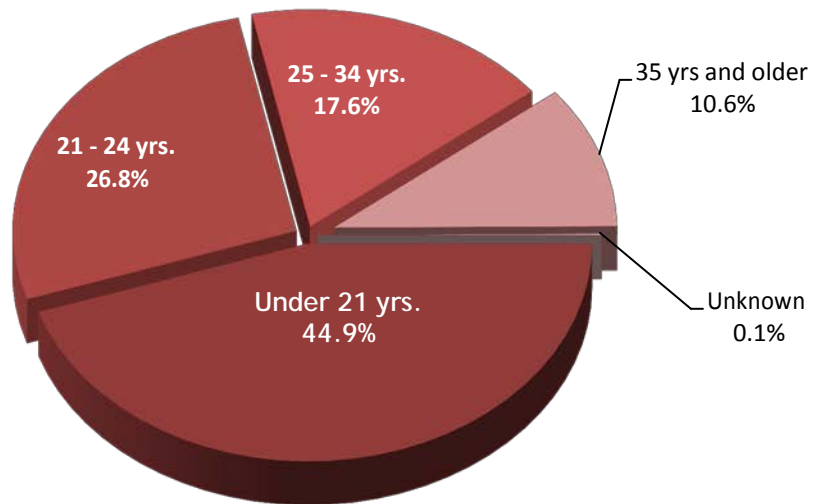
Source: SURE Enrollment File

BERGEN COMMUNITY COLLEGE
Enrollment by Age, Gender and Status
Fall 2011

Age Ranges:	Full-Time		Part-Time		Total		All Students	
	Male	Female	Male	Female	Male	Female	Total	% of Total
Under 21 yrs.	3,193	2,783	1,000	788	4,193	3,571	7,764	44.9%
21 - 24 yrs.	1,295	1,061	1,147	1,119	2,442	2,180	4,622	26.8%
25 - 34 yrs.	503	650	760	1,127	1,263	1,777	3,040	17.6%
35 yrs and older	125	356	398	950	523	1,306	1,829	10.6%
Unknown	6	2	4	4	10	6	16	0.1%
Total	5,122	4,852	3,309	3,988	8,431	8,840	17,271	100.0%
Median Age (Years)	20.0	20.0	23.0	26.0	20.0	22.0	21.0	
Mean Age (Years)	21.1	22.5	25.7	29.5	22.9	25.6	24.3	

Source: SURE Enrollment File

Fall 2011 Enrollment by Age



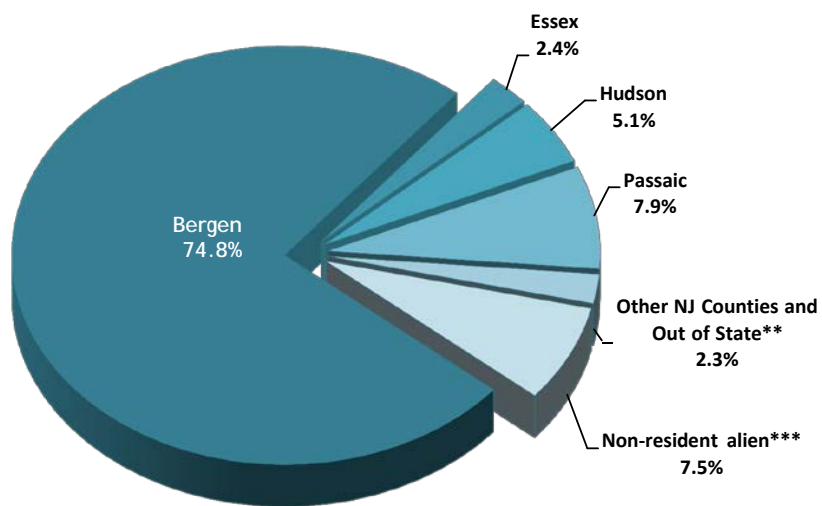
BERGEN COMMUNITY COLLEGE

Enrollment by County of Residence*

Fall 2011

County of Residence	Full-Time	Part-Time	Total
Bergen	7,203	5,711	12,914
Essex	257	165	422
Hudson	576	305	881
Passaic	850	520	1,370
Other NJ Counties and Out of State**	164	228	392
Non-resident alien***	924	368	1,292
Total	9,974	7,297	17,271

Fall 2011 Enrollment by County of Residence



* Residence is defined as legal residence

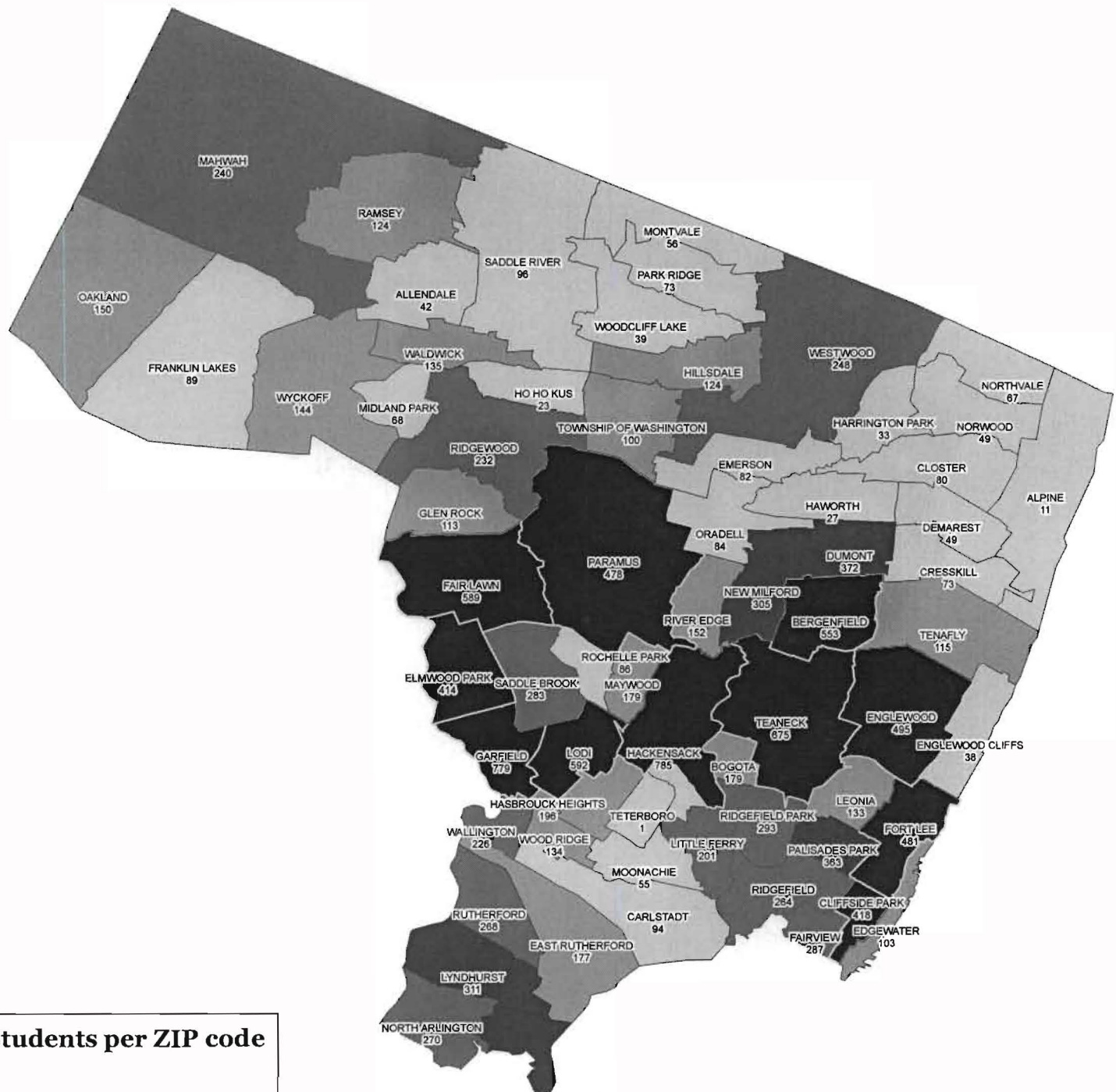
** Includes cases where County of Residence is unknown

***Students with F-1/ other Visa status

Note: Percents may not total 100 due to rounding

Source: SURE Enrollment File

BERGEN COMMUNITY COLLEGE
Credit Student Residency
Fall 2011
Bergen County Residents*
by ZIP Code



* Residency determined by mailing address.
Note: Localities which share ZIP codes with another town may not appear on the map.
Localities with no current BCC students may also not appear on the map.

BERGEN COMMUNITY COLLEGE
Enrollment by Country of Citizenship*
Fall 2007 – Fall 2011

COUNTRIES	2009	2010	2011	COUNTRIES	2009	2010	2011
United States	12,424	13,114	13,327	Germany	18	24	19
Mexico	48	50	50	United Kingdom	9	10	12
Canada	11	11	12	Italy	10	8	11
North America:	12,483	13,175	13,389	Spain	6	8	9
				Portugal	7	9	6
El Salvador	33	35	35	<i>Other: Western Europe</i>	21	22	18
Costa Rica	17	17	15	Western Europe:	71	81	75
Guatemala	19	14	15				
Honduras	18	11	10	Poland	363	349	263
Central America:	87	77	75	Albania	98	99	98
				Russia	58	60	62
Dominican Republic	169	176	192	Ukraine	52	40	45
Jamaica	87	90	106	Macedonia	37	53	40
Cuba	29	28	30	>> Former Yugoslavia, other	25	18	17
Trinidad and Tobago	23	26	26	Bulgaria	15	12	8
Haiti	8	13	14	Slovakia	11	11	7
West Indies/Caribbean:	316	333	368	Fmr. USSR / Western Asia	42	52	53
				<i>Other: Eastern Europe</i>	31	28	16
Colombia	377	389	362	Eastern Europe:	732	722	609
Peru	214	221	202	TOTAL: Europe	803	803	684
Ecuador	152	165	166				
Brazil	90	91	93	Turkey	117	124	114
Venezuela	29	26	29	Israel	27	24	34
Argentina	21	24	22	Syria	24	25	30
Chile	21	19	16	Iran	17	25	26
Guyana	15	15	10	Jordan	18	17	20
Bolivia	11	10	15	<i>Other: Middle East</i>	52	34	42
South America:	930	960	915	Middle East:	255	249	266
<i>Other: The Americas</i>	32	25	24				
TOTAL: The Americas	13,848	14,570	14,771	Republic of Korea	699	719	721
				Philippines	158	155	122
Egypt	55	50	48	China	62	49	55
Ghana	24	25	29	Japan	28	30	39
Nigeria	11	15	13	Thailand	13	16	11
South Africa	9	4	7	<i>Other: East Asia/Pacific Rim</i>	31	39	37
Kenya	10	8	10	East Asia/Pacific Rim:	991	1008	985
<i>Other</i>	53	63	53				
TOTAL: Africa	162	165	160	India	206	192	165
				Pakistan	48	38	34
Australia	2	5	5	Afghanistan	16	17	9
South Pacific Islands	1	1	3	<i>Other: Central/Southern Asia</i>	18	28	32
TOTAL: South Pacific	3	6	8	Central/Southern Asia:	288	275	240
				TOTAL: Asia	1,534	1,532	1,491
<i>Country Unknown</i>							
GRAND TOTAL	16,469	17,197	17,271				

* Countries of citizenship are self-reported.

Source: SURE Enrollment File

BERGEN COMMUNITY COLLEGE**Enrollment by Status****Fall 1968 – Fall 2011**

STATUS	1968	1969	1970	1971	1972	1973	1974	1975	1976
Full-Time	729	1,283	1,327	1,578	2,695	3,416	3,655	3,931	4,148
Part-Time	725	2,112	2,695	2,892	3,468	3,838	4,636	5,330	5,595
TOTAL	1,454	3,395	4,022	4,470	6,163	7,254	8,291	9,261	9,743

STATUS	1977	1978	1979	1980	1981	1982	1983	1984	1985
Full-Time	3,928	3,676	4,221	4,339	4,191	4,254	4,202	3,930	3,804
Part-Time	6,076	6,592	6,438	7,194	7,241	7,635	7,843	7,317	7,204
TOTAL	10,004	10,268	10,659	11,533	11,432	11,889	12,045	11,247	11,008

STATUS	1986	1987	1988	1989	1990	1991	1992	1993	1994
Full-Time	3,846	3,712	3,622	4,085	4,235	4,413	4,827	4,958	5,205
Part-Time	7,067	6,977	7,297	7,830	8,052	7,920	7,684	7,896	7,681
TOTAL	10,913	10,689	10,919	11,915	12,287	12,333	12,511	12,854	12,886

STATUS	1995	1996	1997	1998	1999	2000	2001	2002	2003
Full-Time	5,449	5,086	4,926	5,291	5,549	5,580	5,773	6,606	6,907
Part-Time	7,758	7,210	6,372	6,521	6,676	6,413	6,372	6,864	7,084
TOTAL	13,207	12,296	11,298	11,812	12,225	11,993	12,145	13,470	13,991

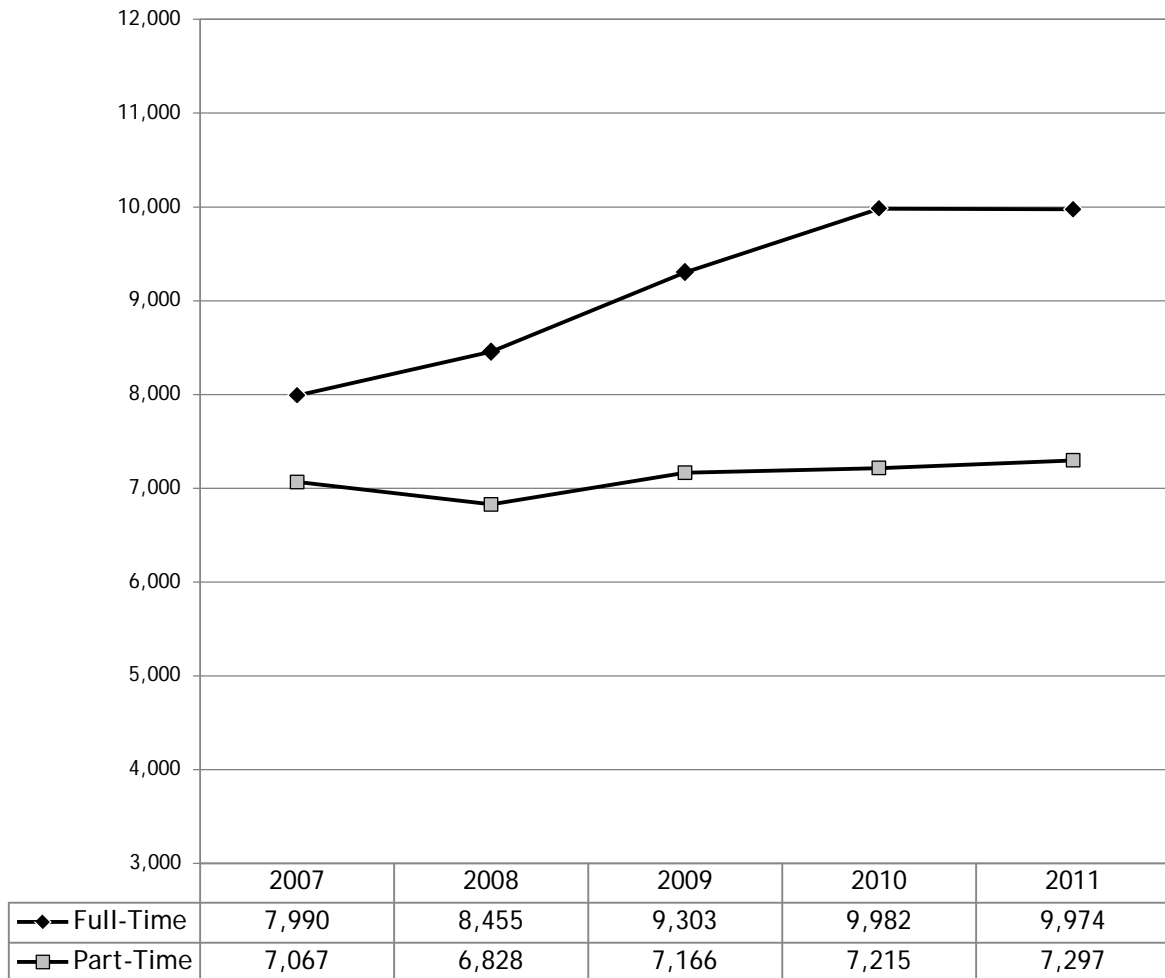
STATUS	2004	2005	2006	2007	2008	2009	2010	2011
Full-Time	7,258	7,486	7,738	7,990	8,455	9,303	9,982	9,974
Part-Time	7,067	7,276	6,870	7,067	6,828	7,166	7,215	7,297
TOTAL	14,325	14,762	14,608	15,057	15,283	16,469	17,197	17,271

Source: SURE Enrollment File

BERGEN COMMUNITY COLLEGE

Enrollment by Status

Fall 1968 – Fall 2011



Source: SURE Enrollment File

BERGEN COMMUNITY COLLEGE

Enrollment by Day/Evening

Fall 2007 – Fall 2011

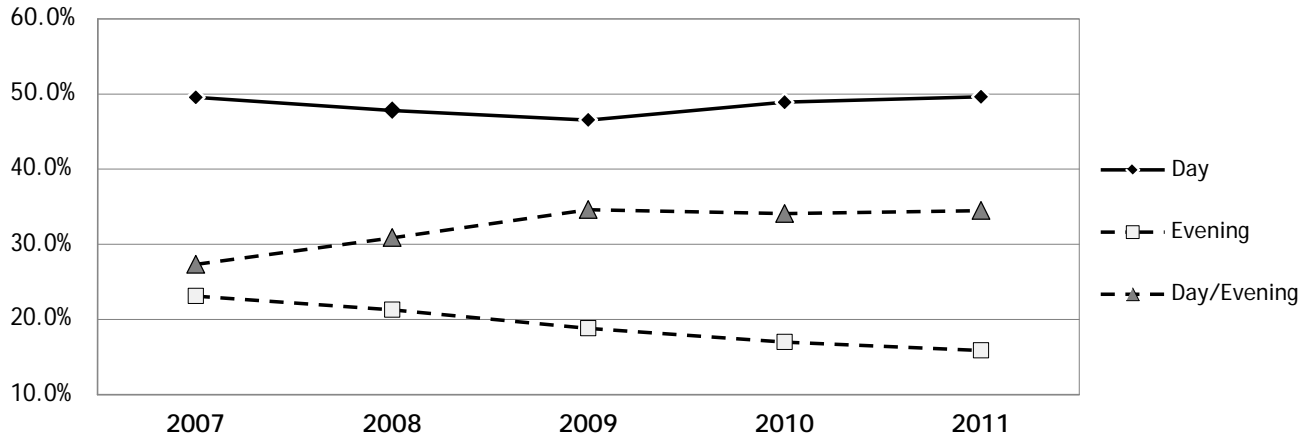
	2007		2008		2009		2010		2011	
	Number	%	Number	%	Number	%	Number	%	Number	%
Day	6,901	49.5%	7049	47.8%	7,437	46.5%	8,153	48.9%	8,283	49.6%
Evening*	3,219	23.1%	3137	21.3%	3,009	18.8%	2,831	17.0%	2,649	15.9%
Day/Evening	3,810	27.4%	4,550	30.9%	5,533	34.6%	5,674	34.1%	5,755	34.5%
TOTAL**	13,930		14,736		15,979		16,658		16,687	

*Includes Saturday classes

**Total class enrollments excluding online courses.

Source: Datatel

Fall 2011 Day/Evening Enrollment



BERGEN COMMUNITY COLLEGE

Distance Learning Enrollment

Fall 2007 – Fall 2011

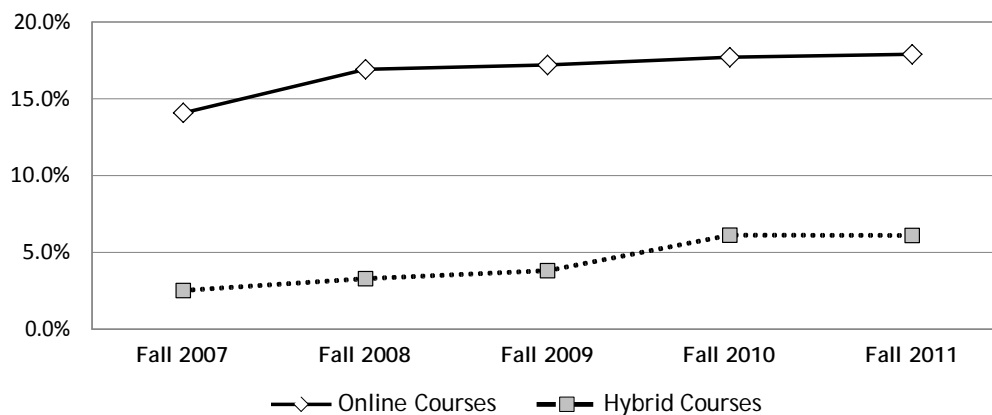
	2007		2008		2009		2010		2011	
	Number	%**	Number	%**	Number	%**	Number	%**	Number	%**
Online Enrollment	2,121	14.1%	2,585	16.9%	2,833	17.2%	3,046	17.7%	3,098	17.9%
Hybrid Enrollment	379	2.5%	501	3.3%	626	3.8%	1,051	6.1%	1,054	6.1%
TOTAL	2,500	16.6%	3,086	20.2%	3,459	21.0%	4,097	23.8%	4,152	24.0%

*Unduplicated headcount, based on 10th day numbers

** Percentage of total headcount

Source: DataTel

Distance Learning Enrollment Percentage*



*Percentage of students enrolled in distance education, as a percentage of total headcount

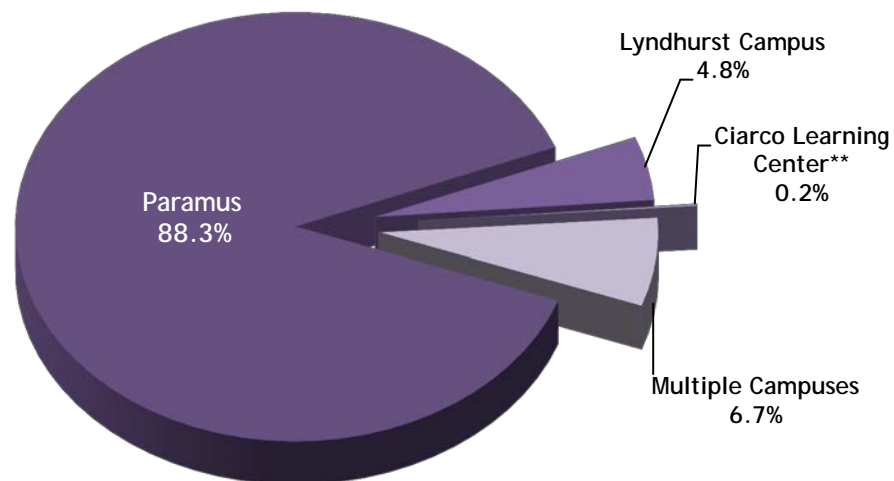
BERGEN COMMUNITY COLLEGE

Enrollment by Location

Fall 2011

Location	Total Students
Paramus	14,750
Lyndhurst	799
Ciarco Learning Center**	28
Multiple Campuses	1,110
Total	16,687

Fall 2011 Enrollment by Location



* Does not include online courses

** Includes only students taking credit courses at Ciarco.

Source: SURE Enrollment File

Program Data

Program Highlights

- ✦ The proportion of degree-seeking students in Fall 2011 remained consistent with the last five years, at 91% of the student population.
- ✦ First-time, full-time, degree-seeking students represented 30% of all full-time students as well as 17% of the total student population in Fall 2011, a slight increase from 2010.
- ✦ The percentage of students enrolled in transfer programs also increased slightly, to 72% in Fall 2011.
- ✦ Enrollment in Associate of Arts (A.A.) programs decreased by 4%, while enrollment in Associate of Science (A.S.) programs increased by 15% from Fall 2010 to Fall 2011.
- ✦ Enrollment in Associate of Applied Science (A.A.S.) programs increased by 9.7% from Fall 2010 to Fall 2011.
- ✦ Enrollment in Certificate (CERT) programs decreased by 4.5%, while enrollment in Certificate of Achievement (COA) programs increased by nearly 50%.
- ✦ Programs with large five-year increases in number included General A.S. (NSM & PS), Biology, Criminal Justice, Psychology, Business Administration, and Engineering Science.
- ✦ Programs with large five-year decreases in number included General A.A. (Liberal Arts), Information Technology, Music, and Education.

BERGEN COMMUNITY COLLEGE
Student Population by Degree Program
Fall 1976 - Fall 2011

	1976	1977	1978	1979	1980	1981	1982	1983	1984
Transfer Programs	2,937	2,775	2,792	2,807	2,810	3,022	2,965	3,001	3,101
Career Programs	3,398	3,375	3,350	3,694	3,849	3,982	4,145	4,277	3,799
Total Degree	6,335	6,150	6,142	6,501	6,659	7,004	7,110	7,278	6,900
Total Non-Degree	3,408	3,854	4,126	4,158	4,874	4,428	4,779	4,767	4,347
TOTAL	9,743	10,004	10,268	10,659	11,533	11,432	11,889	12,045	11,247

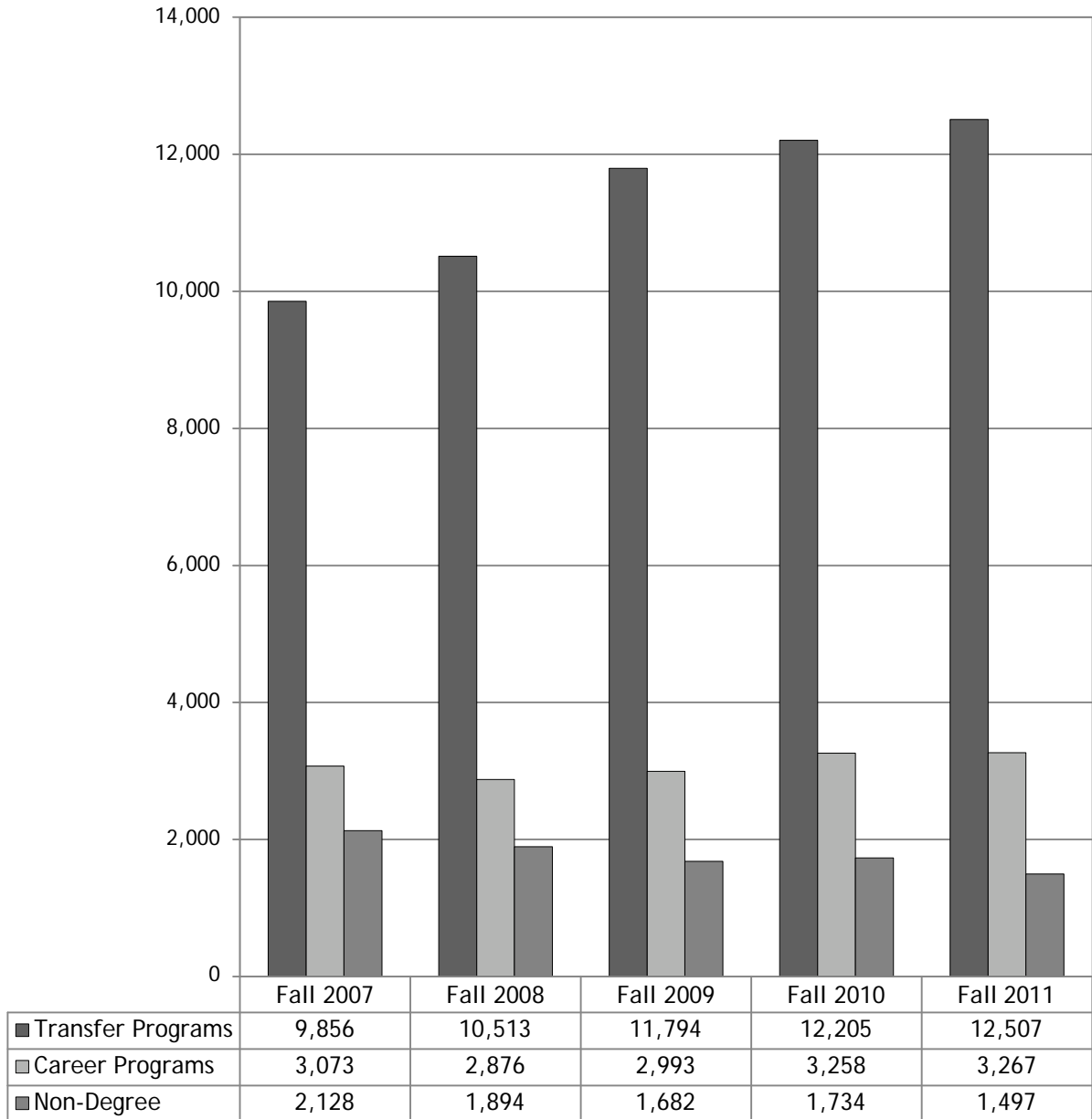
	1985	1986	1987	1988	1989	1990	1991	1992	1993
Transfer Programs	3,239	3,359	3,429	3,446	4,004	4,253	4,622	5,216	5,539
Career Programs	3,562	3,427	3,202	3,031	3,298	3,298	3,485	3,443	3,324
Total Degree	6,801	6,786	6,631	6,477	7,302	7,551	8,107	8,659	8,863
Total Non-Degree	4,207	4,127	4,058	4,442	4,613	4,736	4,226	3,852	3,991
TOTAL	11,008	10,913	10,689	10,919	11,915	12,287	12,333	12,511	12,854

	1994	1995	1996	1997	1998	1999	2000	2001	2002
Transfer Programs	5,841	6,061	5,605	5,441	5,854	5,591	5,737	6,074	7,142
Career Programs	3,392	3,310	3,164	2,926	3,027	2,998	2,940	2,989	3,281
Total Degree	9,233	9,371	8,769	8,367	8,881	8,589	8,677	9,063	10,423
Total Non-Degree	3,653	3,836	3,527	2,931	2,931	3,636	3,316	3,082	3,047
TOTAL	12,886	13,207	12,296	11,298	11,812	12,225	11,993	12,145	13,470

	2003	2004	2005	2006	2007	2008	2009	2010	2011
Transfer Programs	7,834	8,407	8,976	9,284	9,856	10,513	11,794	12,205	12,507
Career Programs	3,355	3,459	3,467	3,191	3,073	2,876	2,993	3,258	3,267
Total Degree	11,189	11,866	12,443	12,475	12,929	13,389	14,787	15,463	15,774
Total Non-Degree	2,802	2,459	2,319	2,133	2,128	1,894	1,682	1,734	1,497
TOTAL	13,991	14,325	14,762	14,608	15,057	15,283	16,469	17,197	17,271

Source: SURE Enrollment File

BERGEN COMMUNITY COLLEGE
Student Population by Degree Program
Fall 2007 - Fall 2011



BERGEN COMMUNITY COLLEGE
Student Population by Degree Program and Registration Status
Fall 2011

PROGRAMS	Full-Time	Part-Time	Total	Percent*
Transfer Programs:				
First Time Students	2,291	583	2,874	16.6%
Transfer Students	543	226	769	4.5%
Stop-out/Re-admit	620	874	1,494	8.7%
Continuing Students	4,533	2,837	7,370	42.7%
Career Programs:				
First Time Students	566	178	744	4.3%
Transfer Students	145	110	255	1.5%
Stop-out/Re-admit	117	253	370	2.1%
Continuing Students	852	1,046	1,898	11.0%
TOTAL DEGREE SEEKING	9,667	6,107	15,774	91.3%
Non-Degree Seeking:				
First Time Students	106	251	357	2.1%
Transfer Students	52	250	302	1.7%
Stop-out/Re-admit	40	264	304	1.8%
Continuing Students	109	425	534	3.1%
TOTAL NON-DEGREE SEEKING	307	1,190	1,497	8.7%
GRAND TOTAL	9,974	7,297	17,271	100.0%

* Percent of total enrollment.

Source: SURE Enrollment File

BERGEN COMMUNITY COLLEGE

Associate in Arts

Number of Declared Majors

Fall 2007 – Fall 2011

	2007			2008			2009			2010			2011		
	Full Time	Part Time	Total	Full Time	Part Time	Total	Full Time	Part Time	Total	Full Time	Part Time	Total	Full Time	Part Time	Total
Liberal Arts:															
General A.A.	2,031	1,219	3,250	2,138	1,248	3,386	2,131	1,189	3,320	2,042	1,095	3,137	1,832	1,082	2,914
Communication Arts	96	51	147	95	63	158	117	60	177	116	57	173	124	45	169
Economics	16	3	19	22	8	30	22	9	31	33	9	42	31	12	43
Global Studies													7	1	8
History	56	21	77	66	26	92	83	37	120	84	34	118	68	40	108
Literature	36	29	65	46	20	66	52	31	83	67	28	95	66	25	91
Philosophy	7	10	17	12	6	18	13	6	19	18	6	24	23	11	34
Political Science	40	7	47	34	21	55	44	24	68	63	18	81	64	21	85
Psychology	272	145	417	306	148	454	342	171	513	401	173	574	410	194	604
Religion	2	0	2	2	3	5	1	6	7	2	3	5	5	2	7
Sociology	38	20	58	35	15	50	30	15	45	40	20	60	53	23	76
Social Sciences	7	6	13	7	10	17	13	4	17	15	13	28	14	8	22
Women's Studies	1	1	2	2	1	3	1	2	3	3	0	3	4	0	4
World Languages & Cultures	19	12	31	29	12	41	24	14	38	29	12	41	33	12	45
Fine and Performing Arts:															
Art	98	53	151	119	53	172	157	80	237	153	91	244	153	70	223
Cinema Studies	21	7	28	29	15	44	37	19	56	29	17	46	30	15	45
Music Arts-General	40	26	66	47	29	76	70	24	94	72	36	108	79	37	116
Music Arts-Business	45	20	65	41	16	57	52	18	70	54	20	74	22	19	41
Music Arts-Comp. Record	34	14	48	28	18	46	22	17	39	28	12	40	12	12	24
Music Arts-Electronic	8	9	17	14	5	19	10	2	12	14	9	23	4	3	7
Theatre- Dance	10	1	11	9	3	12	16	5	21	14	2	16	17	5	22
Theatre- General	20	12	32	18	11	29	15	10	25	15	7	22	12	7	19
Theatre-Acting	28	9	37	25	15	40	30	18	48	35	11	46	39	11	50
Theatre - Tech. Prod.	5	6	11	9	4	13	9	4	13	9	5	14	6	6	12
TOTAL A.A.	2,930	1,681	4,611	3,133	1,750	4,883	3,291	1,765	5,056	3,336	1,678	5,014	3,108	1,661	4,769

Source: SURE Enrollment File

BERGEN COMMUNITY COLLEGE

Associate in Science

Number of Declared Majors

Fall 2007 – Fall 2011

	2007			2008			2009			2010			2011		
	Full Time	Part Time	Total	Full Time	Part Time	Total	Full Time	Part Time	Total	Full Time	Part Time	Total	Full Time	Part Time	Total
Natural Sciences & Math:															
Gen. A.S. Nat.Sci./Math	158	95	253	208	107	315	221	124	345	274	131	405	283	139	422
Biology	158	66	224	125	63	188	195	92	287	247	112	359	258	130	388
Biotechnology	7	4	11	13	3	16	10	8	18	18	9	27	22	11	33
Chemistry	38	26	64	44	20	64	44	20	64	40	21	61	47	22	69
Computer Science	83	74	157	93	58	151	96	61	157	131	56	187	154	72	226
Mathematics	29	13	42	27	17	44	35	22	57	51	24	75	65	22	87
Physics	6	6	12	12	4	16	14	4	18	20	11	31	14	10	24
Pre-Chiropractic	2	2	4	3	4	7	1	3	4	0	1	1	0	0	0
Engineering Science:															
Engineering Science	80	75	155	103	59	162	126	89	215	155	93	248	183	112	295
Professional Studies:															
General A.S. Pro.Studies	795	818	1,613	896	836	1,732	1,122	1,029	2,151	1,265	1,036	2,301	1,495	1,109	2,604
Broadcasting	53	35	88	50	37	87	51	33	84	58	31	89	65	34	99
Business Admin.	322	251	573	389	271	660	414	300	714	418	252	670	423	265	688
Bus.Admin.- Acct.	187	158	345	185	145	330	199	143	342	198	163	361	218	135	353
Bus.Admin.- Int'l Trade	62	36	98	71	31	102	68	51	119	74	40	114	53	33	86
Bus.Admin.- Mgmt.	214	149	363	213	138	351	235	173	408	232	162	394	202	161	363
Bus.Admin.-Marketing	120	69	189	133	69	202	154	70	224	150	66	216	137	67	204
Bus.Admin.-Non-Profit Mgmt.	-	-	-	-	-	-	-	-	-	2	2	4	3	1	4
Criminal Justice	351	135	486	464	156	620	593	232	825	635	252	887	676	264	940
Education	204	104	308	183	89	272	237	86	323	268	65	333	221	80	301
Exercise Science	63	45	108	74	38	112	86	52	138	105	44	149	118	67	185
Hospitality	-	-	-	-	-	-	-	-	-	3	0	3	9	4	13
Information Technology	0	2	2	14	9	23	27	13	40	33	11	44	51	27	78
Journalism	50	22	72	52	25	77	52	27	79	51	24	75	57	16	73
Labor Studies*	-	-	-	-	-	-	-	-	-	-	-	-	3	2	5
Music Business*	-	-	-	-	-	-	-	-	-	-	-	-	14	4	18
Music Technology *	-	-	-	-	-	-	-	-	-	-	-	-	14	6	20
Social Work	39	39	78	58	41	99	72	54	126	89	68	157	94	66	160
TOTAL A.S.	3,021	2,224	5,245	3,410	2,220	5,630	4,052	2,686	6,738	4,517	2,674	7,191	4,879	2,859	7,738

*New Programs

Note: Dashes indicate that the program was not offered at that time.

Source: SURE Enrollment File

BERGEN COMMUNITY COLLEGE

Associate in Applied Science

Number of Declared Majors

Fall 2007 – Fall 2011

	2007			2008			2009			2010			2011		
	Full	Part	Total	Full	Part	Total	Full	Part	Total	Full	Part	Total	Full	Part	Total
	Time	Time		Time	Time		Time	Time		Time	Time		Time	Time	
Allied Health:															
Dental Hygiene	24	52	76	30	48	78	20	54	74	24	51	75	16	60	76
Diag. Med. Sonography	5	24	29	5	20	25	7	16	23	8	17	25	6	26	32
Health Sciences	3	5	8	0	7	7	1	3	4	0	3	3	0	3	3
Medical Laboratory Tech.*	1	1	2	0	0	0	0	0	0	0	0	0	0	1	1
Medical Office Assistant	36	34	70	33	34	67	32	37	69	44	45	89	78	57	135
Physical Therapy Asst.**	1	0	1	0	2	2	0	1	1	0	0	0	0	0	0
Radiography	43	44	87	31	27	58	14	46	60	12	47	59	22	42	64
Respiratory Therapy	47	32	79	38	26	64	40	32	72	34	33	67	35	31	66
Veterinary Tech.	9	9	18	14	27	41	22	23	45	26	16	42	14	19	33
Nursing:															
Nursing-Day & Evening	52	229	281	46	235	281	54	248	302	69	242	311	43	261	304
Business Administration:															
Accounting	143	124	267	145	123	268	168	107	275	179	118	297	178	129	307
Management Information Sys.***	-	-	-	-	-	-	-	-	-	-	-	-	1	1	2
Banking & Finance	92	65	157	107	60	167	86	47	133	80	43	123	93	42	135
Legal Studies**	1	12	13	1	10	11	1	6	7	0	2	2	0	2	2
Legal Nurse Consultant	2	4	6	5	4	9	1	3	4	0	2	2	0	2	2
Paralegal Studies	54	59	113	49	55	104	44	58	102	54	62	116	57	62	119
Business Technologies															
Hotel-Restaurant-Hospitality:															
Catering/Banquet Mgmt.	41	22	63	38	19	57	46	16	62	46	26	72	48	30	78
Culinary Entrepreneurship	-	-	-	-	-	-	-	-	-	12	3	15	35	12	47
Culinary Event Planning & Mgmt.	-	-	-	-	-	-	-	-	-	6	3	9	16	10	26
Hospitality Mgmt.	58	44	102	61	41	102	86	43	129	112	62	174	82	59	141
Music Business***	-	-	-	-	-	-	-	-	-	-	-	-	11	2	13
Music Recording Tech.***	-	-	-	-	-	-	-	-	-	-	-	-	16	3	19
Travel and Tourism*	0	0	0	0	0	0	0	0	0	0	4	4	0	1	1
Information Technology:															
Database Management	-	-	-	-	-	-	-	-	-	5	1	6	16	8	24
Game Programming***	-	-	-	-	-	-	-	-	-	-	-	-	16	6	22
Game Testing***	-	-	-	-	-	-	-	-	-	-	-	-	3	7	10
Information Technology	28	48	76	37	46	83	53	49	102	48	42	90	18	20	38
Networking Administration	53	51	104	46	47	93	57	42	99	72	56	128	80	79	159
Office Technology	13	9	22	6	9	15	11	5	16	13	13	26	15	10	25
Web Development & Mgmt.	14	19	33	15	11	26	21	14	35	13	6	19	22	10	32
Word Processing**	0	0	0	0	1	1	0	1	1	0	2	2	0	0	0
Medical Informatics	-	-	-	-	-	-	3	1	4	4	3	7	13	6	19
Human Services:															
Career Ladder: Education & Child Dev.	-	-	-	-	-	-	1	0	1	0	0	0	0	0	0
Correctional Studies	9	5	14	3	4	7	2	7	9	7	2	9	9	2	11
Early Childhood Education	128	88	216	128	82	210	156	95	251	140	95	235	119	88	207
Law Enforcement****	226	174	400	127	129	256	128	100	228	141	89	230	105	71	176
Industrial Design Tech:															
Computer Animation	58	24	82	41	33	74	47	23	70	45	23	68	38	23	61
Drafting and Design Tech.	43	38	81	35	40	75	38	40	78	40	36	76	48	33	81
Electronics Technology	22	25	47	41	19	60	30	18	48	27	36	63	34	32	66
Engineering Tech.-General	33	27	60	43	21	64	52	29	81	66	28	94	64	28	92
Graph Design/Comp. Graph	102	91	193	122	82	204	135	91	226	168	100	268	121	97	218
Manufacturing Technology	8	9	17	5	11	16	2	7	9	3	9	12	13	8	21
Technical Studies	0	0	0	0	0	0	0	0	0	1	1	2	2	0	2
Science Technology:															
Environmental Technology	8	5	13	4	4	8	11	7	18	8	8	16	8	3	11
Horticulture	8	19	27	12	16	28	11	12	23	13	17	30	8	13	21
Landscape/Design/Build	-	-	-	-	-	-	0	2	2	7	5	12	13	4	17
Science Laboratory Tech.	8	2	10	10	4	14	7	4	11	14	8	22	9	6	15
TOTAL A.A.S.	1,373	1,394	2,767	1,278	1,297	2,575	1,387	1,287	2,674	1,541	1,359	2,900	1,525	1,409	2,934

Note: Dashes indicate that the program was not offered at that time.

* Program was discontinued earlier, student readmitted under old program

** Program has been discontinued.

***New Programs

**** Law Enforcement Studies program includes students listed under old Criminal Justice program.

Source: SURE Enrollment File

BERGEN COMMUNITY COLLEGE

Certificate Programs Number of Declared Majors Fall 2007 – Fall 2011

Certificates	2007			2008			2009			2010			2011		
	Full	Part	Total	Full	Part	Total	Full	Part	Total	Full	Part	Total	Full	Part	Total
	Time	Time		Time	Time		Time	Time		Time	Time		Time	Time	
Computer Aided Drafting	3	10	13	2	11	13	1	11	12	2	12	14	4	9	13
Computer Animation	13	5	18	6	4	10	4	5	9	4	4	8	3	0	3
Computer Graphics	14	7	21	16	7	23	8	8	16	9	9	18	5	6	11
Computer Help Desk*	-	-	-	-	-	-	-	-	-	-	-	-	0	1	1
Computer Science	13	14	27	11	9	20	5	6	11	6	10	16	3	7	10
Computer Technical Support	7	12	19	4	13	17	9	6	15	7	9	16	4	5	9
Culinary Arts	15	8	23	10	17	27	17	16	33	21	13	34	8	23	31
Culinary Science*	-	-	-	-	-	-	-	-	-	0	1	1	0	0	0
Database Programing and Admin	-	-	-	1	0	1	1	0	1	0	1	1	3	1	4
E-Commerce: Bus. Emphasis	2	2	4	1	1	2	0	0	0	1	2	3	2	4	6
Environmental Tech.	1	1	2	1	1	2	0	0	0	0	1	1	3	0	3
Event Planning & Management	-	-	-	-	-	-	1	2	3	3	2	5	3	1	4
Exercise Science	9	6	15	9	9	18	8	8	16	11	7	18	7	5	12
Floral Design	2	2	4	2	4	6	1	0	1	2	2	4	1	5	6
Grounds Management*	-	-	-	-	-	-	-	-	-	-	-	-	0	2	2
Hospitality Management	3	8	11	4	5	9	8	3	11	6	5	11	7	8	15
Landscaping	1	0	1	3	3	6	2	5	7	5	3	8	3	4	7
Legal Nurse Consultant*	-	-	-	-	-	-	-	-	-	-	-	-	0	1	1
Medical Office Admin. Asst.	1	10	11	4	8	12	6	11	17	6	13	19	17	11	28
Music Business	0	4	4	6	1	7	3	1	4	3	2	5	3	2	5
Music Technology	5	0	5	1	3	4	6	2	8	7	5	12	1	3	4
Music Theatre	-	-	-	-	-	-	-	-	-	0	1	1	1	0	1
Network & Web Development	0	7	7	1	0	1	0	2	2	1	0	1	0	0	0
Office Technology	5	2	7	4	6	10	1	7	8	0	5	5	1	3	4
Piano Instruction/Pedagogy	-	-	-	-	-	-	-	-	-	0	1	1	0	1	1
Radiation Therapy Technology	5	0	5	8	0	8	10	0	10	2	0	2	5	0	5
Small Business Mgmt.	16	11	27	13	8	21	6	10	16	13	10	23	14	5	19
Surgical Technology Day/Evening	12	20	32	8	11	19	19	12	31	2	31	33	2	19	21
Transfer Studies: Liberal Arts	7	1	8	11	3	14	19	3	22	11	5	16	11	4	15
Transfer Studies: Sci., Tech., & Prof. Std.	2	1	3	5	1	6	3	3	6	5	5	10	5	1	6
Travel Service	0	1	1	0	1	1	0	1	1	0	0	0	0	1	1
U.S. Studies	1	1	2	4	1	5	3	0	3	5	4	9	3	1	4
TOTAL CERTIFICATES	137	133	270	135	127	262	141	122	263	132	163	295	119	133	252

Certificates of Achievement	2007			2008			2009			2010			2011		
	Full	Part	Total	Full	Part	Total	Full	Part	Total	Full	Part	Total	Full	Part	Total
	Time	Time		Time	Time		Time	Time		Time	Time		Time	Time	
Accounting Assistant	-	-	-	-	-	-	-	-	-	2	0	2	3	5	8
Baking	-	-	-	-	-	-	-	-	-	1	1	2	0	1	1
Biotechnology	2	1	3	3	0	3	4	2	6	2	3	5	4	2	6
Business Paraprofessional Mgmt.	-	-	-	-	-	-	1	0	1	1	0	1	2	1	3
Career Ladder Education/Child Development*	-	-	-	-	-	-	-	-	-	-	-	-	3	2	5
Commercial Music Production	4	2	6	3	2	5	4	3	7	2	0	2	2	1	3
Environmental Technology	3	0	3	1	0	1	3	1	4	0	2	2	0	1	1
Finance	-	-	-	3	0	3	0	1	1	0	0	0	1	2	3
Fire Science*	-	-	-	-	-	-	-	-	-	-	-	-	2	5	7
Forensic Science*	-	-	-	-	-	-	-	-	-	-	-	-	2	0	2
Geographic Info. Systems	0	0	0	1	0	1	2	1	3	0	1	1	0	2	2
Homeland Security & Emerg. Mgmt.	-	-	-	-	-	-	1	1	2	2	3	5	5	1	6
Hospitality Operations	-	-	-	-	-	-	-	-	-	1	0	1	0	0	0
Manufacturing Design	2	0	2	1	0	1	3	1	4	3	1	4	1	2	3
Marketing Assisstant*	-	-	-	-	-	-	-	-	-	-	-	-	1	0	1
Machine Tooling	3	1	4	3	3	6	0	4	4	1	1	2	0	4	4
Network Security	-	-	-	-	-	-	0	1	1	1	2	3	0	1	1
Non-profit Management	-	-	-	-	-	-	1	1	2	1	3	4	1	1	2
Professional Cooking	2	4	6	0	4	4	2	3	5	5	4	9	3	5	8
Quality Assurance	3	0	3	2	1	3	3	4	7	1	11	12	1	2	3
Real Estate	2	4	6	5	4	9	6	1	7	2	2	4	2	1	3
Retailing	-	-	-	-	-	-	-	-	-	1	0	1	0	0	0
Sports Management	-	-	-	-	-	-	1	0	1	2	1	3	3	6	9
TOTAL C.O.A.	21	12	33	22	14	36	31	24	55	28	35	63	36	45	81

Note: Dashes indicate that the program was not offered at that time.

*New programs

Source: SURE Enrollment File

BERGEN COMMUNITY COLLEGE

Transfer Programs

Five-Year Change

Fall 2007 – Fall 2011

	2007	2011	Chng.	% Chng.
Psychology	417	604	187	44.8%
Art	151	223	72	47.7%
Music Arts-General	66	115	49	74.2%
Political Science	47	85	38	80.9%
History	77	108	31	40.3%
Literature	65	91	26	40.0%
Economics	19	43	24	126.3%
Communication Arts	147	169	22	15.0%
Sociology	58	76	18	31.0%
Philosophy	17	34	17	100.0%
Cinema Studies	28	42	14	50.0%
World Languages & Cultures	31	45	14	45.2%
Theatre-Acting	37	50	13	35.1%
Theatre-Dance	11	22	11	100.0%
Social Sciences	13	22	9	69.2%
Religion	2	7	5	250.0%
Women's Studies	2	4	2	100.0%
Theatre-Tech. Prod.	11	12	1	9.1%
Music Arts-Electronic	17	7	-10	-58.8%
Theatre-General	32	19	-13	-40.6%
Music Arts-Business	65	41	-24	-36.9%
Music Arts-Comp. Record	48	24	-24	-50.0%
General A.A.	3,250	2,914	-336	-10.3%
TOTAL A.A.	4,611	4,757	146	3.2%

	2007	2011	Chng.	% Chng.
General A.S. Pro.Studies	1,529	2,604	1,075	70.3%
Criminal Justice*	193	940	747	387.0%
Gen. A.S. Nat.Sci./Math	210	422	212	101.0%
Business Admin.	513	688	175	34.1%
Biology	223	388	165	74.0%
Engineering Science	143	295	152	106.3%
Exercise Science	70	185	115	164.3%
Social Work	79	160	81	102.5%
Computer Science	172	226	54	31.4%
Bus. Admin.-Acct.	310	353	43	13.9%
Bus.Admin.-Marketing	166	204	38	22.9%
Mathematics	54	87	33	61.1%
Bus. Admin.-Mgmt.	337	363	26	7.7%
Broadcasting	82	99	17	20.7%
Chemistry	55	69	14	25.5%
Physics	11	24	13	118.2%
Journalism	79	73	-6	-7.6%
Bus.Admin.-Int'l Trade	98	86	-12	-12.2%
Education	322	301	-21	-6.5%
TOTAL A.S.	4,652	7,738	3,086	66.3%

*Includes degrees reclassified from AAS Law Enforcement

BERGEN COMMUNITY COLLEGE

Career Programs*

Five-Year Change

Fall 2007 – Fall 2011

	2007	2011	Chng.	% Chng.
Accounting	219	307	88	40.2%
Networking Administration	82	159	77	93.9%
Medical Office Assistant	80	135	55	68.8%
Engineering Tech.-General	48	92	44	91.7%
Graph Design/Comp. Graph	178	218	40	22.5%
Hospitality Mgmt.	116	141	25	21.6%
Electronics Technology	43	66	23	53.5%
Veterinary Tech.	16	33	17	106.3%
Banking & Finance	120	135	15	12.5%
Office Technology	17	25	8	47.1%
Science Laboratory Tech.	7	15	8	114.3%
Environmental Technology	4	11	7	175.0%
Paralegal Studies	113	119	6	5.3%
Drafting and Design Tech.	78	81	3	3.8%
Diag.Med.Sonography	30	32	2	6.7%
Correctional Studies	9	11	2	22.2%
Manufacturing Technology	19	21	2	10.5%
Dental Hygiene	76	76	0	0.0%
Nursing-Day & Evening	304	304	0	0.0%
Computer Animation	61	61	0	0.0%
Catering/Banquet Mgmt.	67	63	-4	-6.0%
Web Development & Mgmt.	36	32	-4	-11.1%
Health Sciences*	8	3	-5	-62.5%
Respiratory Therapy	72	66	-6	-8.3%
Horticulture	27	21	-6	-22.2%
Legal Nurse Consultant	9	2	-7	-77.8%
Travel and Tourism**	8	1	-7	-87.5%
Radiography	88	64	-24	-27.3%
Early Childhood Education	236	207	-29	-12.3%
Information Technology	89	38	-51	-57.3%
Law Enforcement*	621	176	-445	-71.7%
TOTAL A.A.S.	2,900	2,934	34	1.2%

*Includes degrees reclassified as AS Criminal Justice

Number of Credits

Credit Highlights

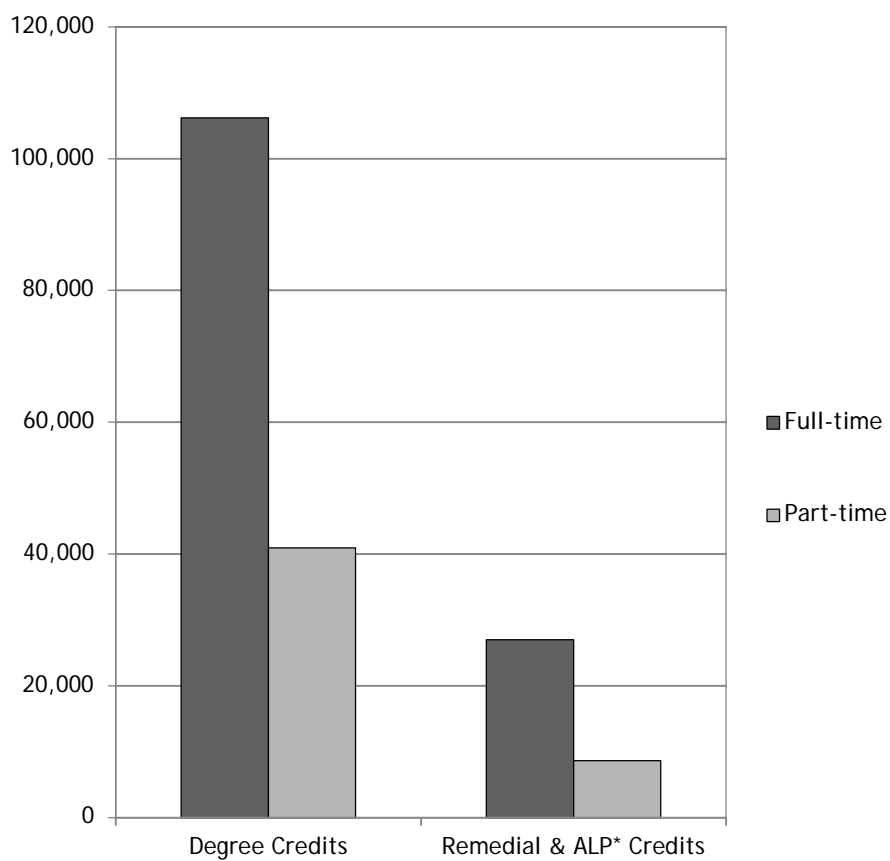
- ✚ In the Fall 2011 semester, students were enrolled in a total of 182,728 credits. 80% of these credit enrollments were degree credits with the remaining 20% coming from remedial and American Language Program courses.
- ✚ In the Fall 2011 semester, students in degree programs were enrolled in 172,600 credits (degree and non-degree credits), a 2.2% increase from Fall 2010. Non-degree students were enrolled in a total of 10,128 credits, a decrease of 1.1%.
- ✚ Of the total enrolled credits in Fall 2011, 73% were generated by full-time students, a slight decrease from the previous year.
- ✚ The percentage of total semester credits consisting of credits from distance education courses (online and hybrid) has remained consistent at 9.9% for Fall 2010 and Fall 2011.
- ✚ The percentage of student credits taken at Lyndhurst increased slightly, 3.5% in Fall 2010 to 4.0% in Fall 2011.

BERGEN COMMUNITY COLLEGE

Number of Credits by Student Status

Fall 2011

Student Status	Degree Credits	Remedial & ALP* Credits	Total
Full-time	106,188	27,010	133,198
Part-time	40,916	8,614	49,530
Total	147,104	35,624	182,728



* American Language Program

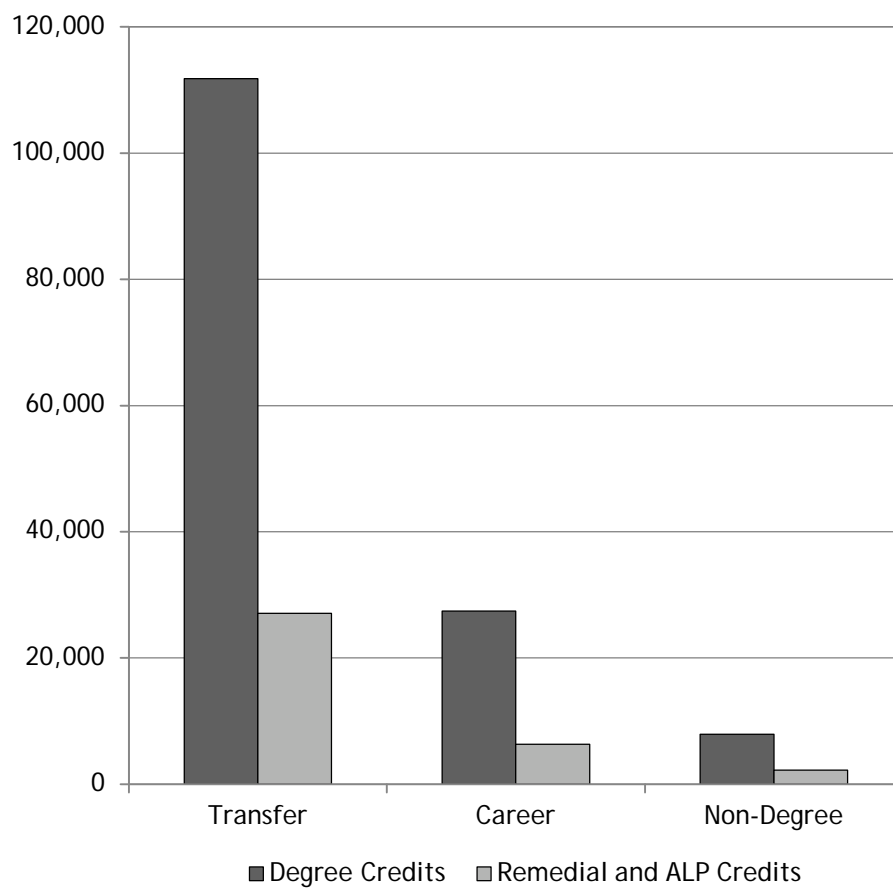
Source: SURE Enrollment File

BERGEN COMMUNITY COLLEGE

Number of Credits by Degree Program

Fall 2011

	Degree Credits	Remedial & ALP* Credits	Total
Transfer Programs	111,798	27,047	138,845
Career Programs	27,407	6,348	33,755
Total Degree	139,205	33,395	172,600
Non-Degree	7,899	2,229	10,128
Total	147,104	35,624	182,728



* American Language Program.

Source: SURE Enrollment File

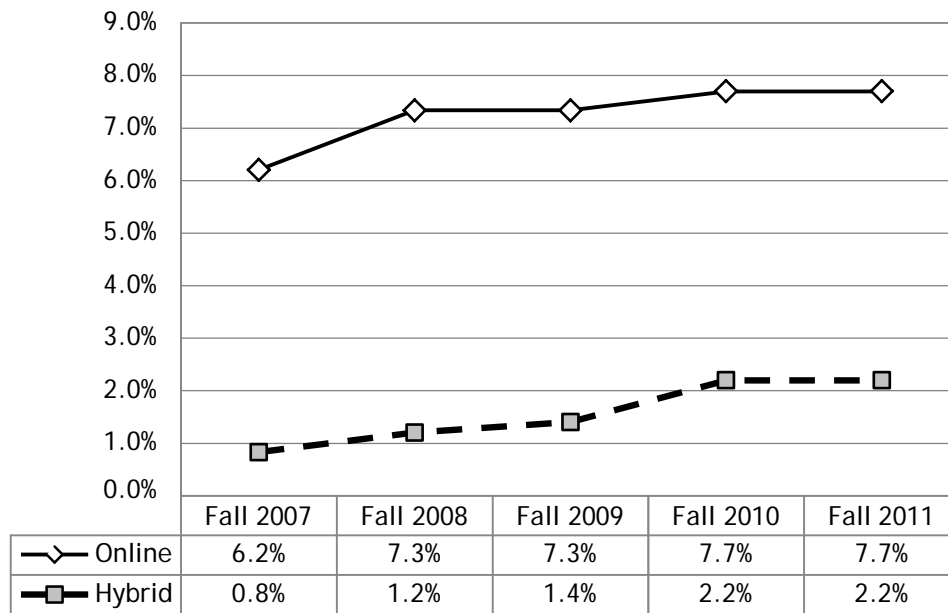
BERGEN COMMUNITY COLLEGE

Distance Education Credits

Fall 2007 - Fall 2011

Student Status	Fall 2007	Fall 2008	Fall 2009	Fall 2010	Fall 2011
Online	9,462	11,572	12,578	13,923	14,183
Hybrid	1,270	1,899	2,439	4,025	4,001
Traditional	143,034	146,175	156,370	163,164	164,544
Total*	152,496	157,747	171,648	181,373	182,728

Distance Learning Percentage of Total Credits**



*Total unduplicated credits may not be exact match

**Percentage of online and hybrid credits out of total semester credits

Source: Datatel

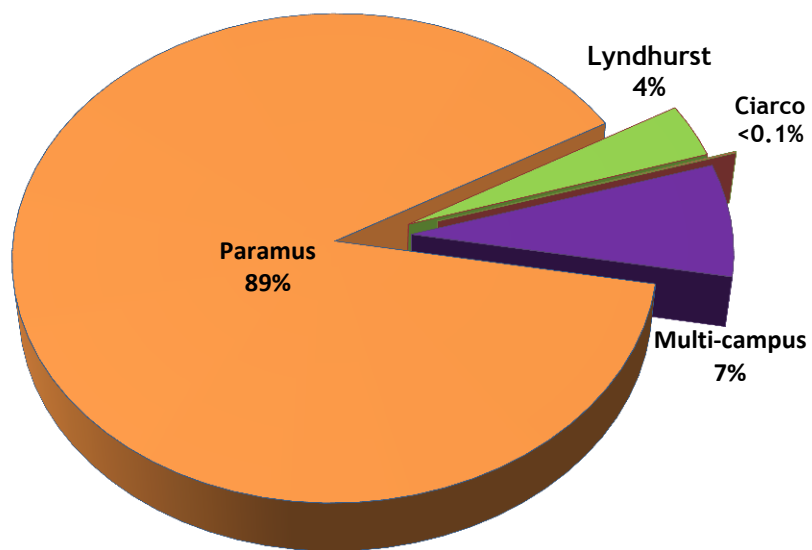
BERGEN COMMUNITY COLLEGE

Number of Credits by Location

Fall 2011

Location	Degree Credits	Remedial & ALP* Credits	Total
Paramus	129,063	32,339	161,402
Lyndhurst	5,003	1,317	6,320
Ciarco	72	15	87
Multi-campus	12,966	1,953	14,919
Total*	147,104	35,624	182,728

Fall 2011 Credits by Location



Source: SURE Enrollment File

Non- Credit Enrollment

Non-credit Enrollment Highlights

- ❏ Non-credit enrollments are offered in three areas: Continuing Education, Ciarco Learning Center and the Institute for Learning in Retirement. The two main categories of non-credit enrollment courses are Open Enrollment and Customized Training.
- ❏ The total unduplicated headcount of the Open Enrollment courses in all non-credit areas for FY 2011 was 8,069 students, a decrease from FY 2010. An additional 1,026 students were enrolled in Customized Training courses in the Continuing Education area in FY 2011.
- ❏ The total number of contact hours taken by non-credit students was 445,422 in FY 2011, an increase of 2% from FY 2010.

BERGEN COMMUNITY COLLEGE**Continuing Education Enrollment****Fiscal Year 2011**

		Open Enrollment	Customized Training	Total
	Unduplicated headcount	4,236	1,026	5,262
Number of enrollments	Fundable enrollments	710	0	710
	Non fundable enrollments	6,003	1,448	7,451
	Total enrollments*	6,713	1,448	8,161
Contact hours	Fundable contact hours	25,522	0	25,522
	Non fundable contact hours	106,936	21,897	128,833
	Total contact hours	132,458	21,897	154,355
Enrollments by audience	Adult	6,206	1,448	7,654
	Child	507	0	507
	Senior	0	0	0
	Total enrollments	6,713	1,448	8,161
Enrollments by Content	Career	5,272	1,448	6,720
	Avocational	1,441	0	1,441

Source: SURE Non- Credit Enrollment File

Note: As reported to the New Jersey County of Colleges, 10/11

*There may be duplication of individuals in Open Enrollment courses and Customized Training

Open Enrollment courses included are those which began within FY2011. The customized training courses are those which ended within FY2011

BERGEN COMMUNITY COLLEGE**Ciarco Learning Center Enrollment****Fiscal Year 2011**

		Open Enrollment
	Unduplicated headcount	3,092
Number of enrollments	Fundable enrollments	2,322
	Non fundable enrollments	4,264
	Total enrollments	6,586
Contact hours	Fundable contact hours	143,636
	Non fundable contact hours	120,497
	Total contact hours	264,133
Enrollments by audience	Adult	6,586
	Youth	0
	Senior	0
	Total enrollments	6,586
Enrollments by content	Career	6,586
	Avocational	0

*Source: SURE Non- Credit Enrollment File**Note: As reported to the New Jersey County of Colleges, 10/11**Open Enrollment courses included are those which began within FY2011*

BERGEN COMMUNITY COLLEGE
Institute for Learning in Retirement Enrollment
Fiscal Year 2011

		Open Enrollment
	Unduplicated headcount	741
Number of enrollments	Fundable enrollments	0
	Non fundable enrollments	3,853
	Total enrollments	3,853
Contact hours	Fundable contact hours	0
	Non fundable contact hours	26,934
	Total contact hours	26,934
Enrollments by audience	Senior	3,853
	Youth	0
	Total enrollments	3,853
Enrollments by content	Career	0
	Avocational	3,853

Source: SURE Non- Credit Enrollment File

Note: As reported to the New Jersey County of Colleges, 10/11

Open Enrollment courses included are those which began within FY2011

Degrees Awarded

Degrees Awarded Highlights

- ✚ The 2,027 degrees and certificates awarded to students during the 2011 academic year, a 5% increase from 2010, once again set a new high for the college.
- ✚ The number of degrees awarded in Transfer Programs (A.A. and A.S) increased by 5%, from 1,430 in 2010 to 1,511 in 2011.
- ✚ The number of degrees awarded in Career Programs (A.A.S and Certificate/COA) increased by 6%, from 486 in 2010 to 516 in 2011.

BERGEN COMMUNITY COLLEGE

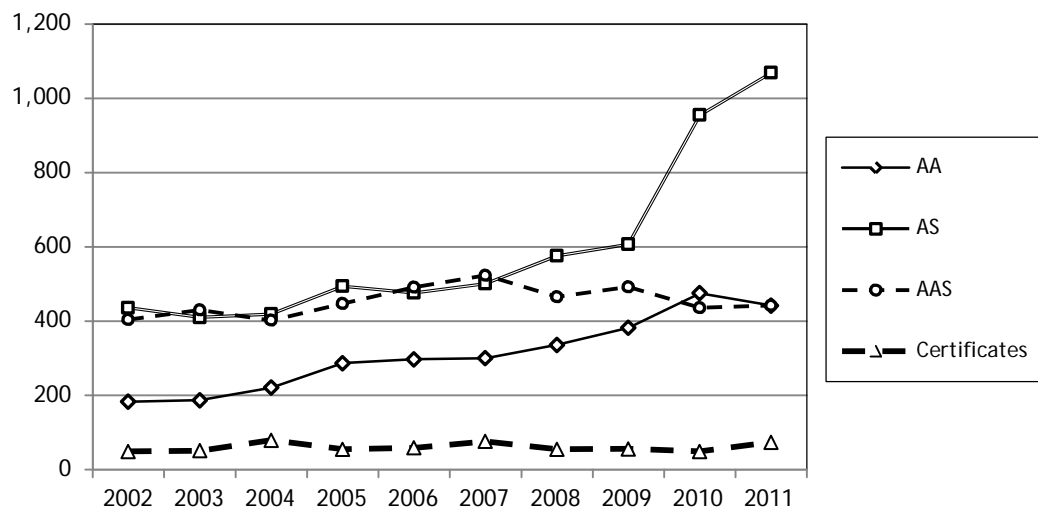
Degrees and Certificates Awarded

2002– 2011

DEGREE PROGRAM	2002	2003	2004	2005	2006
A.A. Degrees	183	187	221	287	297
A.S. Degrees	436	410	419	494	476
Total Transfer Programs	619	597	640	781	773
A.A.S. Degrees	404	430	402	447	491
Certificates	49	51	79	55	59
Total Career Programs	453	481	481	502	550
TOTAL DEGREES AWARDED	1,072	1,078	1,121	1,283	1,323

DEGREE PROGRAM	2007	2008	2009	2010	2011
A.A. Degrees	300	336	384	475	442
A.S. Degrees	523	577	605	955	1,069
Total Transfer Programs	823	913	989	1,430	1,511
A.A.S. Degrees	501	465	492	437	442
Certificates	76	55	61	49	74
Total Career Programs	577	520	553	486	516
TOTAL DEGREES AWARDED	1,400	1,433	1,542	1,916	2,027

Source: BCHEPR10, SURE Graduate File



BERGEN COMMUNITY COLLEGE

Associate in Arts
Degrees Awarded
2007-2011

Programs	2007	2008	2009	2010	2011
Liberal Arts:					
General A.A.	184	235	249	319	261
Cinema Studies	2	1	1	3	1
Communication Arts	12	9	17	16	22
Economics	1	1	1	1	3
Foreign Languages	6	3	2	5	3
History	9	5	15	9	11
Literature	5	7	5	7	6
Philosophy and Religion	3	3	3	3	4
Political Science	6	2	4	3	4
Psychology	40	41	42	46	57
Social Science	0	0	1	2	1
Sociology	5	7	4	5	4
Women's Studies	0	0	0	1	0
Fine and Performing Arts:					
Art	10	8	18	30	37
Music-General	5	2	8	8	12
Music-Business	2	6	5	5	5
Music-Computer Based Recording	3	0	2	3	4
Music-Electronic	1	1	1	0	1
Theater Arts-General	3	2	3	2	2
Theater Arts-Acting	3	2	1	3	1
Theater Arts-Tech. Prod.	0	0	1	3	2
Theater Arts-Dance	0	1	1	1	1
TOTAL A.A.	300	336	384	475	442

Source: SURE Graduate File

BERGEN COMMUNITY COLLEGE

Associate in Science

Degrees Awarded

2007 – 2011

Programs	2007	2008	2009	2010	2011
Natural Sciences and Mathematics:					
General A.S. - Natural Sciences and Mathematics	34	40	33	52	63
Biology	3	7	10	7	6
Biotechnology	0	0	0	2	5
Chemistry	3	2	4	3	6
Computer Science	16	9	11	16	14
Mathematics	4	3	2	2	3
Physics	1	0	1	0	0
Engineering Science:					
Engineering Science	7	8	1	6	4
Professional Studies:					
General A.S. - Professional Concentration	223	221	261	399	534
Broadcasting	12	9	5	10	10
Business Administration	72	75	67	146	110
Business Administration - Accounting	49	62	76	71	62
Business Administration - International Trade	11	13	16	17	20
Business Administration - Management	37	43	39	75	69
Business Administration - Marketing	14	23	20	32	29
Criminal Justice	7	24	27	59	73
Education	13	13	14	18	12
Exercise Science	3	12	9	18	19
Information Technology	0	0	0	5	4
Journalism	3	4	3	6	2
Social Work	11	9	6	11	24
TOTAL A.S.	523	577	605	955	1,069

Source: SURE Graduate File

BERGEN COMMUNITY COLLEGE

Associate in Applied Science

Degrees Awarded

2007 – 2011

Programs	2007	2008	2009	2010	2011
Health Professions:					
Dental Hygiene	35	34	37	37	38
Diagnostic Medical Sonography	8	11	11	10	10
Health Science	0	0	0	3	5
Medical Laboratory Technology	2	1	0	0	1
Medical Office Assistant	20	14	18	9	22
Physical Therapist Assistant*	9	1	0	0	0
Radiography	35	38	37	28	20
Respiratory Therapy	30	39	28	29	29
Medical Informatics					1
Health:					
Health Science	1	4	10	0	0
Veterinary Technology	11	3	17	19	23
Nursing:					
Nursing-Day & Evening	120	103	94	104	111
Business Administration:					
Accounting	23	13	18	17	13
Banking and Finance**	9	7	7	5	5
Legal Nurse Consultant	8	4	2	2	0
Legal Assistant	0	0	4	0	0
Paralegal	14	12	31	20	17
Business Technologies:					
Hospitality Management	9	15	17	23	16
Catering/Banquet Management	8	7	11	4	4
Database Management					1
Information Technology	8	4	3	6	10
Networking Administration	16	24	19	12	13
Office Technology	6	3	1	1	2
Travel and Tourism*	4	0	0	0	1
Web Development/Management	2	4	4	2	1
Human Services:					
Corrections	1	1	1	0	1
Early Childhood Education	14	13	12	10	12
Law Enforcement***	64	56	59	39	35
Industrial and Design Technologies:					
Computer Animation	5	13	8	8	9
Graphic Design/Computer Graphics	19	17	20	25	24
Drafting and Design Technology	7	14	9	12	7
Electrical Technology	3	0	5	4	6
Engineering Technology General	2	3	4	2	2
Engineering Technology Manufacturing	1	0	2	3	0
Science Technologies:					
Ornamental Horticulture	7	7	3	3	3
TOTAL A.A.S.	501	465	492	437	442

* Program has been discontinued.

** Due to a title change, Banking, Credit and Finance is now Banking and Finance.

*** Due to a title change in 2004, Criminal Justice is now Law Enforcement.

Source: SURE Graduate File

BERGEN COMMUNITY COLLEGE

Certificates Awarded

2007 – 2011

Programs	2007	2008	2009	2010	2011
Certificates					
Computer Aided Drafting Technology	8	2	8	5	5
Computer Graphics	2	0	0	0	0
Computer Science	0	3	0	0	0
Computer Technical Support	1	1	1	3	5
Culinary Arts	2	3	1	1	3
Database Programming and Administration	0	0	1	0	2
Event Planning and Management*	-	-	-	-	1
Exercise Science	5	1	1	0	2
Grounds Management	0	0	0	1	0
Hospitality Management	0	3	5	2	1
Landscaping	0	0	1	2	
Medical Office Administrative Assistant	4	3	3	1	3
Music Technology	0	0	1	0	0
Networking and Web Development	1	2	0	0	0
Office Technology	1	0	2	0	0
Piano Instruction/Pedagogy*	-	-	-	-	1
Radiation Therapy Technology	9	10	4	4	9
Small Business Management	3	1	1	4	2
Surgical Technology	34	16	26	16	27
Travel Service	0	6	0	0	0
US Studies*	-	-	-	-	2

Certificates of Achievement					
Biotechnology	0	0	1	0	0
Business Paraprofessional Management	0	0	0	1	0
Commercial Music Production	0	1	0	1	1
Finance	0	0	2	1	1
Floral Design	1	1	1	0	0
Machine Tooling	0	0	1	2	1
Manufacturing Design	4	2	1	3	4
Professional Cook	1	0	0	1	1
Quality Assurance*	-	-	-	-	3
Transfer Studies: Science, Technology & Professional Studies	0	0	0	1	0
TOTAL CERTIFICATES	76	55	61	49	74

*New programs

Source: SURE Graduate File

Faculty Characteristics

Faculty Highlights

- ✚ The faculty of Bergen Community College includes 81 Professors, 83 Associate Professors, 102 Assistant Professors, 15 Instructors, 8 Associate Instructors, and 100 Lecturers, for a total of 389 full-time faculty members. A total of 675 Adjunct faculty members completed the roster for Fall 2011.
- ✚ Sixty-seven percent (67%) of all full-time faculty are either tenured or on tenure track.

BERGEN COMMUNITY COLLEGE

Full-Time Faculty by School, Rank and Gender Fall 2011

Schools	Professor		Associate Professor		Assistant Professor		Instructor		Associate Instructor		Lecturer		Total		Faculty Total
	M	F	M	F	M	F	M	F	M	F	M	F	M	F	
<u>Arts, Humanities, and Wellness</u>															
Communication	1	0	4	1	1	4	0	0	0	0	3	2	9	7	16
History & Geography	3	0	1	0	2	1	0	0	0	0	0	0	6	1	7
World Languages & Cultures	0	1	0	0	0	3	0	1	0	0	0	2	0	7	7
Performing Arts	0	2	1	1	3	0	0	0	0	0	0	0	4	3	7
Philosophy & Religion	3	0	1	1	1	1	0	0	0	0	2	2	7	4	11
Visual Arts	1	0	2	0	1	2	0	0	0	0	2	3	6	5	11
Wellness & Exercise Science	5	2	1	0	0	1	0	0	0	0	0	0	6	3	9
SCHOOL TOTAL	13	5	10	3	8	12	0	1	0	0	7	9	38	30	68
<u>Business, Social Science, and Public Service</u>															
Business, Accounting, & Finance	2	2	2	1	1	2	0	0	0	0	1	4	6	9	15
Computer Informatics	0	1	0	0	1	0	0	0	0	0	0	1	1	2	3
Education	0	0	0	0	0	2	0	0	0	0	0	0	0	2	2
Hospitality & Restaurant Management	1	0	3	0	0	0	0	0	0	0	0	1	4	1	5
Information Technology	1	1	1	1	1	0	0	1	0	0	1	0	4	3	7
Legal & Related Studies	0	0	1	0	1	0	0	0	0	0	0	1	2	1	3
Public Service	0	0	2	0	2	1	0	0	0	1	1	0	5	2	7
Social Sciences	6	3	1	0	3	5	0	0	0	0	4	3	14	11	25
SCHOOL TOTAL	10	7	10	2	9	10	0	1	0	1	7	10	36	31	67
<u>English</u>															
American Language Program	3	0	2	5	0	4	0	1	0	0	0	2	5	12	17
ALP Speech	1	0	0	1	0	1	0	0	0	0	0	1	1	3	4
Composition & Literature	2	4	1	1	3	5	2	1	0	0	5	6	13	17	30
English Basic Skills	2	2	2	4	1	3	1	1	0	0	3	8	9	18	27
SCHOOL TOTAL	8	6	5	11	4	13	3	3	0	0	8	17	28	50	78
<u>Health Professions</u>															
Allied Health	0	0	0	0	0	0	0	0	0	0	1	0	1	0	1
Dental Hygiene	0	1	0	0	0	3	0	1	0	0	0	0	0	5	5
Diagnostic Medical Sonography	0	2	0	0	0	0	0	0	0	1	0	0	0	3	3
Medical Office Technology	0	0	1	0	0	0	0	0	0	1	0	0	1	1	2
Nursing	0	4	0	6	0	6	0	0	0	0	0	4	0	20	20
Radiation Therapy	0	0	0	0	0	1	0	0	0	0	1	0	1	1	2
Radiography	0	0	0	0	1	0	0	1	0	0	0	1	1	2	3
Respiratory Therapy	1	0	0	1	1	0	0	0	0	0	0	0	2	1	3
Surgical Technology	0	0	0	0	0	0	0	1	0	1	0	1	0	3	3
Veterinary Technology	0	0	0	1	0	0	0	0	0	1	0	1	0	3	3
SCHOOL TOTAL	1	7	1	8	2	10	0	3	0	4	2	7	6	39	45
<u>Math, Science, and Technology</u>															
Biology & Horticulture	7	2	2	2	3	2	0	0	0	0	3	3	15	9	24
College Mathematics	1	2	2	4	0	3	0	1	0	0	3	2	6	12	18
Developmental Mathematics	1	0	0	1	1	8	0	2	1	0	6	8	9	19	28
Industrial & Design Technology	1	0	0	0	1	0	0	0	1	0	0	0	3	0	3
Physical Science	2	4	4	0	3	1	0	1	0	0	1	0	10	6	16
SCHOOL TOTAL	12	8	8	7	8	14	0	4	2	0	13	13	43	46	89
Total Teaching Faculty	44	33	34	31	31	59	3	12	2	5	37	56	151	196	347
Library & Learning Resources Center	0	0	0	3	1	6	0	0	0	0	2	3	3	12	15
Total Instructional	44	33	34	34	32	65	3	12	2	5	39	59	154	208	362
Student Services	0	1	3	5	1	3	0	0	1	0	1	0	6	9	15
Counseling & Health Services	2	1	5	2	0	1	0	0	0	0	0	1	7	5	12
TOTAL	46	35	42	41	33	69	3	12	3	5	40	60	167	222	389

Note: Faculty on released time are included in the division of their primary academic affiliation.

Source: HR FCLTY2011

BERGEN COMMUNITY COLLEGE

Full-Time Faculty By Race/Ethnicity and Gender Fall 2011

Schools	White		Black		Hispanic		Asian		Am. Indian		Unknown		Faculty Total
	M	F	M	F	M	F	M	F	M	F	M	F	
<u>Arts, Humanities, and Wellness</u>													
Communication	8	6	1	1	0	0	0	0	0	0	0	0	16
History & Geography	2	1	0	0	1	0	2	0	0	0	1	0	7
World Languages & Cultures	0	4	0	0	0	2	0	1	0	0	0	0	7
Performing Arts	4	3	0	0	0	0	0	0	0	0	0	0	7
Philosophy & Religion	5	3	0	0	1	0	0	1	1	0	0	0	11
Visual Arts	6	5	0	0	0	0	0	0	0	0	0	0	11
Wellness & Exercise Science	6	3	0	0	0	0	0	0	0	0	0	0	9
SCHOOL TOTAL	31	25	1	1	2	2	2	2	1	0	1	0	68
<u>Business, Social Science, and Public Service</u>													
Business, Accounting, & Finance	4	7	2	1	0	0	0	1	0	0	0	0	15
Computer Informatics	0	2	0	0	0	0	1	0	0	0	0	0	3
Education	0	1	0	0	0	0	0	1	0	0	0	0	2
Hospitality & Restaurant Management	4	1	0	0	0	0	0	0	0	0	0	0	5
Information Technology	4	3	0	0	0	0	0	0	0	0	0	0	7
Legal & Related Studies	2	1	0	0	0	0	0	0	0	0	0	0	3
Public Service	5	1	0	0	0	0	0	0	0	0	0	1	7
Social Sciences	14	7	0	2	0	0	0	2	0	0	0	0	25
SCHOOL TOTAL	33	23	2	3	0	0	1	4	0	0	0	1	67
<u>English</u>													
American Language Program	4	6	0	1	0	3	1	2	0	0	0	0	17
ALP Speech	1	2	0	1	0	0	0	0	0	0	0	0	4
Composition & Literature	11	15	0	1	1	0	0	0	0	0	1	1	30
English Basic Skills	7	17	2	0	0	0	0	0	0	0	0	1	27
SCHOOL TOTAL	23	40	2	3	1	3	1	2	0	0	1	2	78
<u>Health Professions</u>													
Allied Health	1	0	0	0	0	0	0	0	0	0	0	0	1
Dental Hygiene	0	5	0	0	0	0	0	0	0	0	0	0	5
Medical Office Technology	1	1	0	0	0	0	0	0	0	0	0	0	2
Nursing	0	17	0	0	0	1	0	1	0	0	0	1	20
Radiography	1	2	0	0	0	0	0	0	0	0	0	0	3
Radiation Therapy	1	1	0	0	0	0	0	0	0	0	0	0	2
Respiratory Therapy	2	1	0	0	0	0	0	0	0	0	0	0	3
Diagnostic Medical Sonography	0	3	0	0	0	0	0	0	0	0	0	0	3
Surgical Technology	0	3	0	0	0	0	0	0	0	0	0	0	3
Veterinary Technology	0	3	0	0	0	0	0	0	0	0	0	0	3
SCHOOL TOTAL	6	36	0	0	0	1	0	1	0	0	0	1	45
<u>Math, Science, and Technology</u>													
Biology & Horticulture	13	8	0	1	1	0	1	0	0	0	0	0	24
College Mathematics	5	12	1	0	0	0	0	0	0	0	0	0	18
Developmental Mathematics	8	11	1	0	0	2	0	6	0	0	0	0	28
Industrial & Design Technology	3	0	0	0	0	0	0	0	0	0	0	0	3
Physical Science	9	5	1	0	0	0	0	1	0	0	0	0	16
SCHOOL TOTAL	38	36	3	1	1	2	1	7	0	0	0	0	89
Total Teaching Faculty	131	160	8	8	4	8	5	16	1	0	2	4	347
	2	9	1	1	0	0	0	1	0	0	0	1	15
Total Instructional	133	169	9	9	4	8	5	17	1	0	2	5	362
Student Services	3	6	1	2	2	0	0	1	0	0	0	0	15
Counseling & Health Services	5	4	1	1	1	0	0	0	0	0	0	0	12
TOTAL	141	179	11	12	7	8	5	18	1	0	2	5	389

Note: Faculty on released time are included in the division of their primary academic affiliation.

Source: HR FCLTY2011

BERGEN COMMUNITY COLLEGE

Full-Time Faculty by Tenure and School Fall 2011

Schools	Tenured	Non-Tenured	Tenure Unavailable	Faculty Total
<u>Arts, Humanities, and Wellness</u>				
Communication	6	5	5	16
History & Geography	5	2	0	7
World Languages & Cultures	2	3	2	7
Performing Arts	4	3	0	7
Philosophy & Religion	5	2	4	11
Visual Arts	3	3	5	11
Wellness & Exercise Science	8	1	0	9
SCHOOL TOTAL	33	19	16	68
<u>Business, Social Science, and Public Service</u>				
Business, Accounting, & Finance	9	1	5	15
Computer Informatics	1	1	1	3
Education	0	2	0	2
Hospitality & Restaurant Management	4	0	1	5
Information Technology	5	1	1	7
Legal & Related Studies	1	1	1	3
Public Service	2	4	1	7
Social Sciences	11	7	7	25
SCHOOL TOTAL	33	17	17	67
<u>English</u>				
American Language Program	13	2	2	17
ALP Speech	2	1	1	4
Composition & Literature	11	8	11	30
English Basic Skills	10	6	11	27
SCHOOL TOTAL	36	17	25	78
<u>Health Professions</u>				
Allied Health	0	0	1	1
Dental Hygiene	2	3	0	5
Medical Office Technology	1	1	0	2
Nursing	13	3	4	20
Radiography	1	1	1	3
Radiation Therapy	1	0	1	2
Respiratory Therapy	2	1	0	3
Diagnostic Medical Sonography	3	0	0	3
Surgical Technology	0	2	1	3
Veterinary Technology	2	1	0	3
SCHOOL TOTAL	25	12	8	45
<u>Math, Science, and Technology</u>				
Biology & Horticulture	15	3	6	24
College Mathematics	12	1	5	18
Developmental Mathematics	5	9	14	28
Industrial & Design Technology	1	2	0	3
Physical Science	12	3	1	16
SCHOOL TOTAL	45	18	26	89
Total Teaching Faculty	172	83	92	347
Library & Learning Resources Center	7	3	5	15
Total Instructional Faculty	179	86	97	362
Student Services	1	3	11	15
Counseling & Health Services	10	1	1	12
TOTAL	190	90	109	389

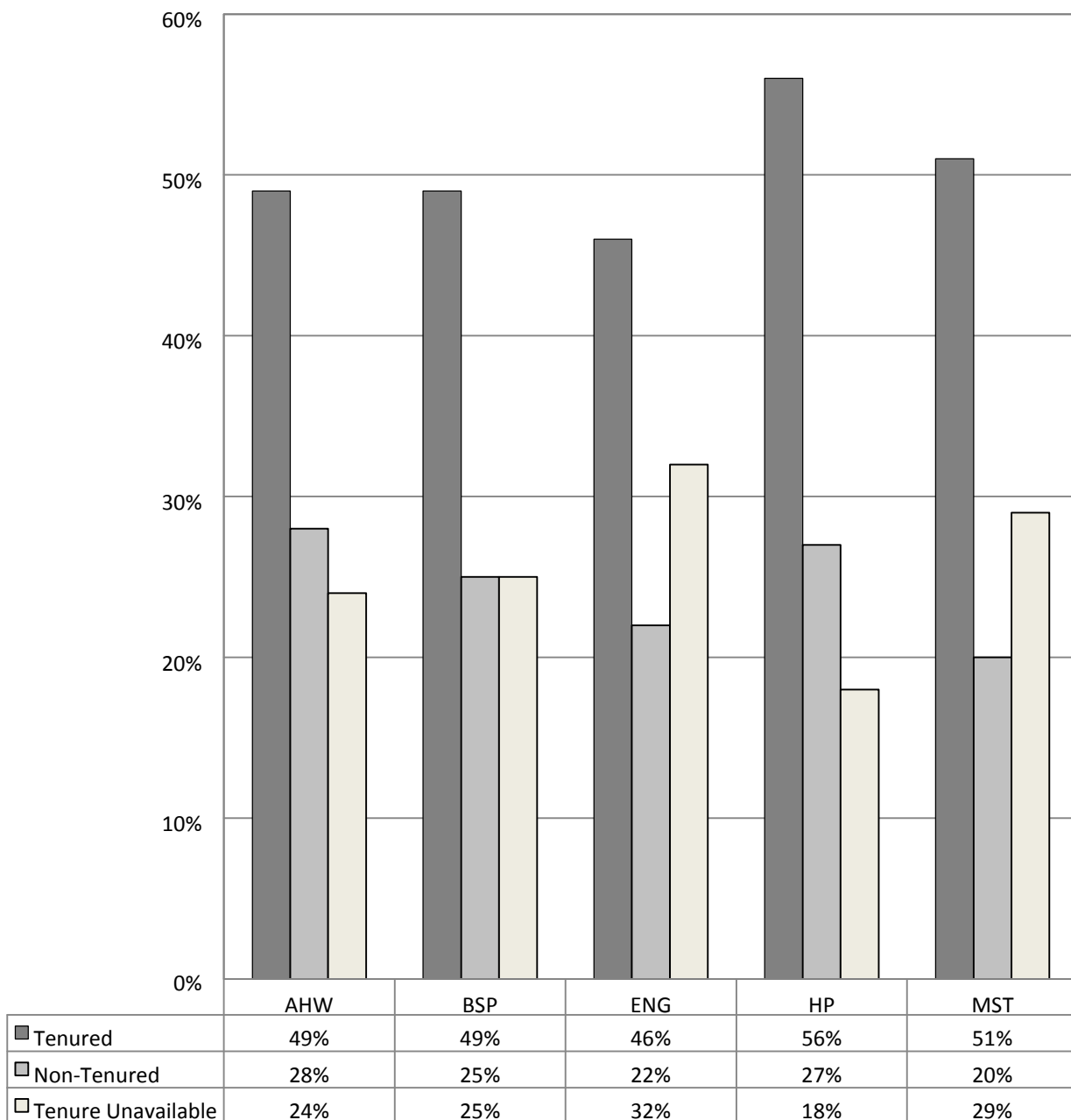
Note: Faculty on released time are included in the division of their primary academic affiliation.

Tenure is not available to lecturers.

Source: HR FCLTY 2011

BERGEN COMMUNITY COLLEGE

Full-Time Faculty
by Tenure and School
(represented by percent)
Fall 2011



AHW: School of Arts, Humanities, & Wellness

BSP: School of Business, Math, & Social Sciences

ENG: School of English

MST: School of Mathematics, Science, & Technology

HP: School of Health Professions

BERGEN COMMUNITY COLLEGE

Adjunct Faculty
Gender and Race/Ethnicity
Fall 2011

Adjunct Faculty: Gender and Race/Ethnicity

Race	Male	Female	Total
American Indian	0	2	2
Asian	16	24	40
Black	13	12	25
Hawaiian/Pacific Islander	0	0	0
Hispanic	13	21	34
White	237	232	469
Unknown	45	60	105
TOTAL	324	351	675

Source: IPEDS 2011-2012 Human Resources Report

Financial Data

Financial Data Highlights

- ✚ Total budgeted revenue increased by 4% from FY 2011 to FY 2012. Sources of revenue were as follows (up or down from last year in parentheses):

State of New Jersey: 9.2% (↓)

Bergen County: 10.7% (↓)

Tuition and Fees: 57.5% (↑)

Student Aid and Grants: 17.8% (↑)

Other: 4.8% (↑)

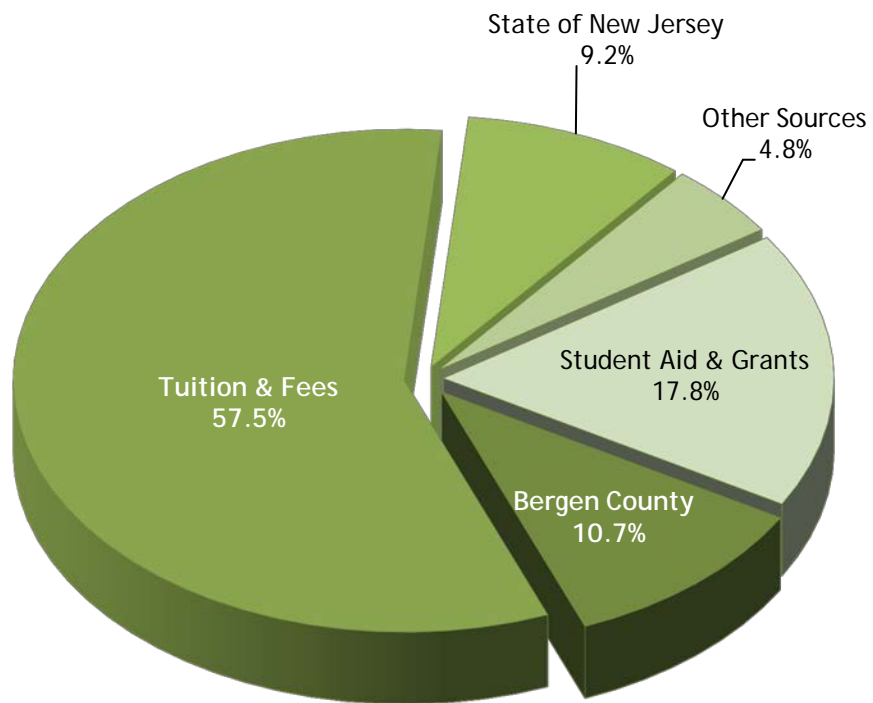
- ✚ Total budgeted expenditures increased by 4% from FY 2011 to FY 2012. About 73% of the total budget expenditures were allocated to the areas of academic, academic support, institutional support, and student services

BERGEN COMMUNITY COLLEGE
Current Funds Budgeted, Revenues
Fiscal Years 2011 and 2012

REVENUES	Budgeted 7/1/10- 6/30/11	Percent of Total	Budgeted 7/1/11- 6/30/12	Percent of Total
Unrestricted:				
Tuition	54,141,820	42.6%	58,059,920	44.0%
Student Fees	16,571,000	13.1%	17,734,450	13.5%
Government Appropriations:				
State	12,175,900	9.6%	12,065,190	9.2%
County	19,116,620	15.1%	14,139,870	10.7%
Other New Jersey Counties	170,000	0.1%	170,000	0.1%
Sales & Services, Auxiliary Enterprise	257,060	0.2%	209,810	0.2%
Other Sources	2,160,000	1.7%	1,515,370	1.1%
Fund Balance Appropriation	2,290,000	1.8%	4,504,190	3.4%
TOTAL UNRESTRICTED	106,882,400	84.2%	108,398,800	82.2%
Restricted:				
Student Aid and Other Grants	20,000,000	15.8%	23,400,000	17.8%
TOTAL CURRENT FUNDS REVENUES	126,882,400	100.0%	131,798,800	100.0%

Source: Bergen Community College Office of Budget and Finance

BERGEN COMMUNITY COLLEGE
Current Funds Budgeted, Revenues
Fiscal Year 2011



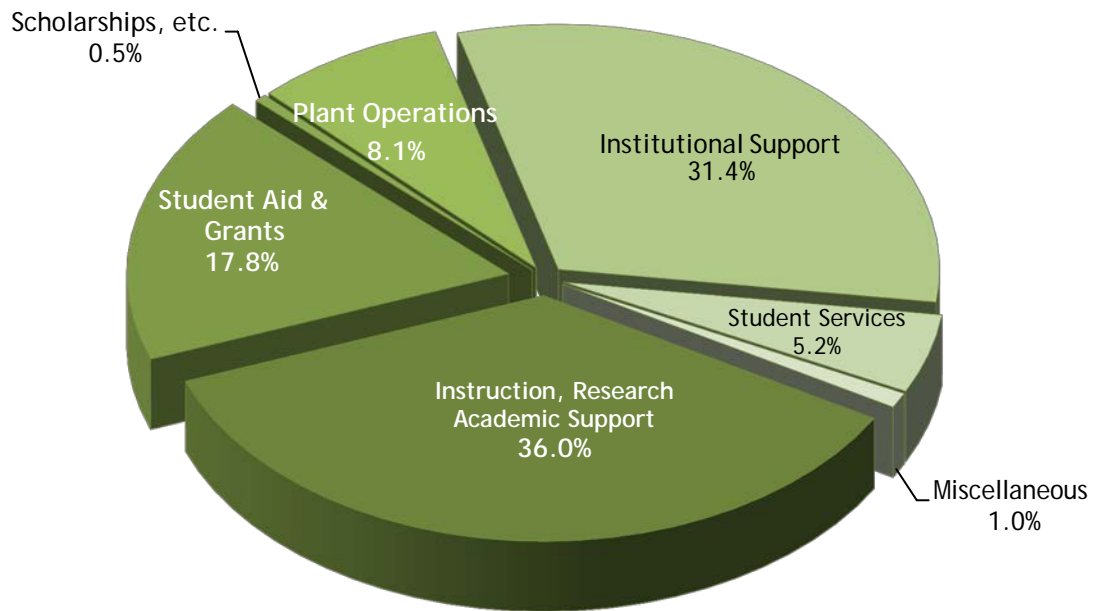
Source: Bergen Community College Office of Budget and Finance

BERGEN COMMUNITY COLLEGE
Current Funds Budgeted, Expenditures
Fiscal Years 2011 and 2012

EXPENDITURES & TRANSFERS	Budgeted 7/1/10-6/30/11	Percent of Total	Budgeted 7/1/11-6/30/12	Percent of Total
Educational and General:				
Instruction	40,979,960	32.3%	41,451,830	31.4%
Academic Support	6,472,280	5.1%	6,008,160	4.6%
Student Services	6,636,190	5.2%	6,874,290	5.2%
Institutional Support	39,987,870	31.4%	41,332,350	31.4%
Operation & Maintenance of Plant	10,679,490	8.4%	10,639,300	8.1%
Scholarships and Fellowships	700,000	0.6%	700,000	0.5%
EDUC. & GENERAL EXPENDITURE	105,455,790	83.0%	107,005,930	81.2%
Mandatory Transfers:				
Principal & Interest	1,099,880	0.9%	1,097,030	0.8%
TOTAL EDUCATIONAL & GENERAL	106,555,670	83.9%	108,102,960	82.0%
Auxiliary Enterprise:				
Expenditures	326,730	0.3%	295,840	0.2%
TOTAL CURRENT UNRESTRICTED	106,882,400	84.2%	108,398,800	82.2%
Restricted Expenditures:				
Student Aid and Other grants	20,000,000	15.8%	23,400,000	17.8%
TOTAL CURRENT FUNDS EXPENDITURES & TRANSFERS	126,882,400	100.0%	131,798,800	100.0%

Source: Bergen Community College Office of Budget and Finance

BERGEN COMMUNITY COLLEGE
Current Funds Budgeted, Expenditures
Fiscal Year 2012



Source: Bergen Community College Office of Budget and Finance

BERGEN COMMUNITY COLLEGE
Student Financial Aid
Recipients and Amount of Award
Fiscal Year 2011

	New Jersey Residents							
	Full-Time Students		Part-Time Students		Non-Resident Students		Total Students	
	Number*	Amount(\$)**	Number*	Amount(\$)**	Number*	Amount(\$)**	Number*	Amount(\$)**
Federal Programs								
Pell Grant	4,364	17,672,000	1,381	2,935,000	54	177,000	5,799	20,784,000
College Work Study	373	408,000	54	49,000	2	3,000	429	460,000
SEOG	2,010	304,000	538	57,000	26	3,000	2,574	364,000
Stafford Loans-Subsidized	1,146	3,500,000	398	1,124,000	33	102,000	1,577	4,726,000
Stafford Loans-Unsubsidized	1,132	3,448,000	414	1,346,000	29	77,000	1,575	4,871,000
PLUS Loans	35	153,000	4	16,000	1	3,000	40	172,000
SMART & ACG or Other	187	158,000	12	5,000	3	3,000	202	166,000
State Programs								
Tuition Aid Grant (TAG)^	2,646	3,764,000	1,036	569,000	-	-	3,682	4,333,000
Educational Opportunity Fund	425	316,000	88	20,000	-	-	513	336,000
Distinguished Scholars	5	4,000	-	-	-	-	5	4,000
Urban Scholars	16	11,000	-	-	-	-	16	11,000
New Jersey Class Loans	22	100,000	2	6,000	-	-	24	106,000
NJSTARS	164	516,000	-	-	-	-	164	516,000
Institutional Funds	136	147,000	54	56,000	3	6,000	193	209,000
Total Aid (amounts)		30,501,000		6,183,000		374,000		37,058,000

* Not an unduplicated count. Many students request and receive more than one kind of financial aid.

** Dollar amounts rounded to nearest thousand.

^ Part-time TAG amount includes funds available to part-time EOF students as well as to other part-time students.

Source: IPEDS Student Financial Aid Report, BCC Office of Financial Aid