

BERGEN COMMUNITY COLLEGE

FINANCIAL AID/ORGANIZATION/BUDGET/FACULTY/GRADUATES/DEGREES/CITIZENSHIP/TRANSFER
LYNDHURST/PARAMUS/CARCO/TENURE/POPULATION/QUALITY/PLANNING/VISION/DATA/STUDENTS/
FACTS/FALL/IR/HYBRID/ONLINE/INFORMATION/FISCAL/DIVISIONS/SECTIONS/PROGRAMS/CREDITS/
MISSION/ADJUNCT/AGE/GENDER/RACE/FULL-TIME/PART-TIME/RESIDENCE/FINANCIAL AID/ORGANIZ
BUDGET/FACULTY/GRADUATES/DEGREES/CITIZENSHIP/TRANSFER/LYNDHURST/PARAMUS/CARCO/TENURE/
POPULATION/QUALITY/PLANNING/VISION/DATA/STUDENTS/FACTS/FALL/IR/HYBRID/ONLINE/
INFORMATION/FISCAL/DIVISIONS/SECTIONS/PROGRAMS/CREDITS/MISSION/ADJUNCT/AGE/GENDER/
RACE/FULL-TIME/PART-TIME/RESIDENCE/FINANCIAL AID/ORGANIZATION/BUDGET/FACULTY/GRADUATES/
DEGREES/CITIZENSHIP/TRANSFER/LYNDHURST/PARAMUS/CARCO/TENURE/POPULATION/QUALITY/
PLANNING/VISION/DATA/STUDENTS/FACTS/FALL/IR/HYBRID/ONLINE/INFORMATION/FISCAL/DIVISIONS/
SECTIONS/PROGRAMS/CREDITS/MISSION/ADJUNCT/AGE/GENDER/RACE/FULL-TIME/PART-TIME/
RESIDENCE/FINANCIAL AID/ORGANIZATION/BUDGET/FACULTY/GRADUATES/DEGREES/CITIZENSHIP/
TRANSFER/LYNDHURST/PARAMUS/CARCO/TENURE/POPULATION/QUALITY/PLANNING/VISION/DATA/
STUDENTS/FACTS/FALL/IR/HYBRID/ONLINE/INFORMATION/FISCAL/DIVISIONS/SECTIONS/PROGRAMS/
CREDITS/MISSION/ADJUNCT/AGE/GENDER/RACE/FULL-TIME/PART-TIME/RESIDENCE

FACTBOOK

2012-2013



Center for Institutional
Effectiveness

Bergen Community College Fact Book 2012-2013



Pitkin Education Center – A-335
400 Paramus Road
Paramus, New Jersey 07652

FOREWORD

The 2012-2013 Edition of the Bergen Community College Fact Book presents data relating to enrollment, graduates, faculty and other personnel, college finances, and demographics. The Fact Book has several purposes: to provide data which may assist the administration in planning and decision making; to give the college community an overview of the student, personnel and financial profiles of the college; and to serve as a reference document which answers many of the most often-asked questions about the college.

Selected tables and graphs may be found on the Center for Institutional Effectiveness website, which can be accessed from the 'Centers' link, available from the 'About Bergen' page of the College's website: www.bergen.edu. For further details, or for data not presented here, please contact the Center for Institutional Effectiveness at the number below. Comments and suggestions for future editions of the Fact Book are welcome.

Center for Institutional Effectiveness

(201) 612-5564

<http://www.bergen.edu/pages/3535.asp>

Vice President of Institutional Effectiveness

Dr. Yun Kim

Director of Institutional Research

Tonia McKoy

Research Assistant

Jack Latona

Technology Coordinator

Vannette John

Administrative Assistant

Alma DeLucca

Administrative Assistant

Paige Shaffer

TABLE OF CONTENTS

A. GENERAL INFORMATION

About Bergen	1
Mission and Vision Statements	2
Board of Trustees, 2012-2013	3
Administrative Organization Chart	4
Administration	5
Programs by Degree	6
Accreditation	7

B. STUDENT CHARACTERISTICS

Highlights	8
Enrollment by Race/Ethnicity, Fall 2008 - Fall 2012	9
Enrollment by Age, Gender and Status, Fall 2012	10
Enrollment by County of Residence, Fall 2012	11
Bergen County Student Residency Map, Fall 2012	12
Enrollment by Country of Citizenship, Fall 2010 - Fall 2012	13
Enrollment by Status, Fall 1968 - Fall 2012	14
Graph, Enrollment by Status, Fall 2008 - Fall 2012	15
Enrollment by Day/Evening, Fall 2008 - Fall 2012	16
Distance Learning Enrollment, Fall 2008 - Fall 2012	17
Enrollment by Location, Fall 2012	18

C. PROGRAM DATA

Highlights	19
Student Population by Degree Program, Fall 1977 - Fall 2012	20
Graph, Student Population by Degree Program, Fall 2008 - Fall 2012	21
Student Population by Degree Program and Registration Status, Fall 2012	22
Associate in Arts & Associate in Fine Arts Number of Declared Majors, Fall 2008- Fall 2012	23
Associate in Science, Number of Declared Majors, Fall 2008 - Fall 2012	24
Associate in Applied Science, Number of Declared Majors, Fall 2008 - 2012 ...	25
Certificate Programs, Number of Declared Majors, Fall 2008 - Fall 2012	26
Transfer Programs, Five Year Change	27
Career Programs, Five Year Change	28
Course Enrollments by Discipline	29

D. NUMBER OF CREDITS

Highlights	30
Number of Credits by Student Status, Fall 2012	31
Number of Credits by Degree Program, Fall 2012	32
Distance Education Credits, Fall 2012	33
Number of Credits by Location, Fall 2012	34

E. NON-CREDIT ENROLLMENT

Highlights	35
Continuing Education Enrollment, Fiscal Year 2013	36
Ciarco Learning Center Enrollment, Fiscal Year 2013	37
Institute for Learning in Retirement Enrollment, Fiscal Year 2013	38

F. DEGREES AWARDED

Highlights	39
Degrees and Certificates Awarded, 2003 - 2012.....	40
Associate in Arts, Degrees Awarded, 2008 - 2012	41
Associate in Science, Degrees Awarded, 2008 - 2012.....	42
Associate in Applied Science, Degrees Awarded, 2008 - 2012.....	43
Certificates Awarded 2008 - 2012	44

G. FACULTY CHARACTERISTICS

Highlights	45
Full-Time Faculty by Division, Rank and Gender, Fall 2012.....	46
Full-Time Faculty by Race/Ethnicity and Gender, Fall 2012	47
Full-Time Faculty by Tenure and Division, Fall 2012	48
Graph, Full-Time Faculty by Tenure and Division, Fall 2012	49
Adjunct Faculty Gender, Race/Ethnicity, and Department, Fall 2012	50

H. FINANCIAL DATA

Highlights	51
Current Funds Budgeted, Revenues, Fiscal Years 2012 and 2013	52
Graph, Current Funds Budgeted, Revenues, Fiscal Year 2013	53
Current Funds Budgeted, Expenditures, Fiscal Years 2012 and 2013	54
Graph, Current Funds Budgeted, Expenditures, Fiscal Year 2013.....	55
Student Financial Aid, Recipients and Amount of Award, Fiscal Year 2013	56

General Information

About Bergen



Bergen Community College was founded in 1965 to satisfy the region's need for a convenient, affordable and comprehensive higher education destination. The College currently enrolls over 17,000 students in credit courses. The College's three instructional sites in Paramus (main campus), Hackensack (Ciarco Learning Center) and Lyndhurst (Bergen Community College at the Meadowlands) offer exceptional opportunities for students enrolled in degree, continuing education and adult education programs.

The College boasts an accomplished faculty, cutting-edge facilities, and opportunities for cultural awareness, civic engagement and service-learning.

Graduating students not only utilize the statewide transfer agreement to attend New Jersey's four-year schools, but use Bergen's reputation as a top community college to propel them to institutions nationwide. Students in career programs enter the workforce with the skills they need in order to succeed.

Within the last decade, Bergen has seen considerable growth in both size and facilities. The number of enrolled credit students has seen an increase of over 40% and the number of degrees awarded by year has nearly doubled since 2001. The most recent additions to the campus include the Technology Education Center and West Hall, which is home to Bergen's Educational Broadcast Center, Media Technologies, and arts and communications instructional facilities. The college has also added a Science Annex containing expanded and updated science laboratory facilities and most recently it purchased and renovated a complex in Lyndhurst, NJ that serves as the current home of BCC at the Meadowlands.

BERGEN COMMUNITY COLLEGE

Mission and Vision Statements

Vision

As a college of choice, Bergen Community College provides a comfort level that enables students of all abilities to mature as learners and engaged citizens. A leading community college in the nation, the college creates a stimulating, rigorous, and inclusive learning environment. Use of innovative technology enhances learning experiences and widens access to learning media. Community and business leaders value the college as a reliable partner and principal provider of work force development. Bergen County residents of all ages and cultural backgrounds appreciate the college as a hub of their educational and cultural activities.

Mission

Bergen Community College educates a diverse student population in a supportive and challenging academic environment that fosters civility and respect. The College offers a comprehensive set of accessible, affordable, and high-quality credit and non-credit courses as well as degree and non-degree programs. Bergen provides life-long learning opportunities for all members of the community. The College responds to community needs through work force training and continuing education, and by developing programs for employers.

BERGEN COMMUNITY COLLEGE
Board of Trustees 2013*

E. Carter Corrison
Chairman

Cid D. Wilson
Vice Chairman

James R. Napolitano
Secretary

Dorothy L. Blakeslee
Treasurer

Philip J. Ciarco III
James D. Demetrakis
Todd C. Flora
Dr. Jo-Anne Mecca
Anthony Miller
Michael J. Neglia

Kathryn Rodriguez
Alumni Representative

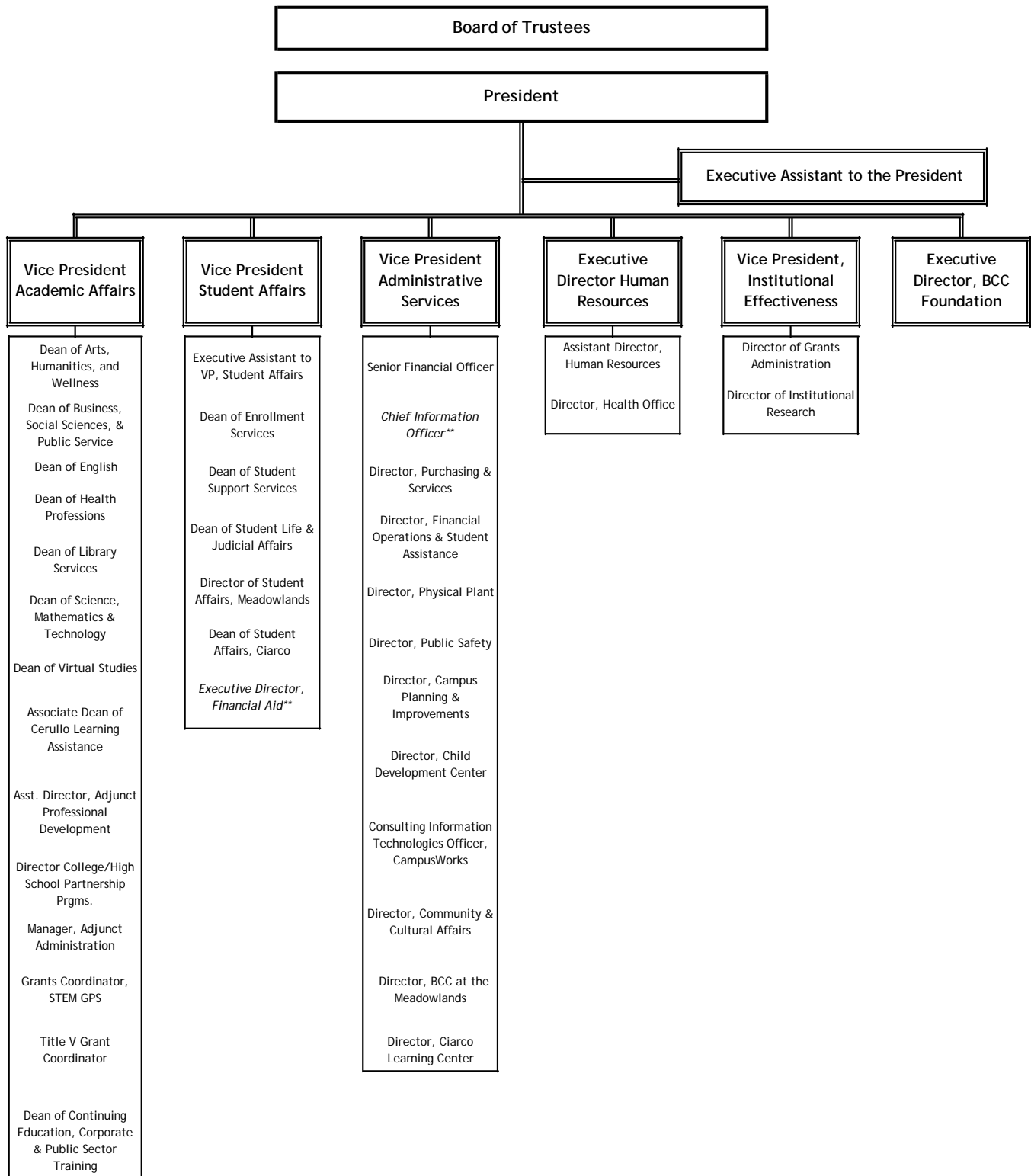
Wendy Dodge
Secretary to the Board of Trustees

*As of April 2013.
Source: President's Office

BERGEN COMMUNITY COLLEGE

Administrative Organization Chart

FY2013*



*As of February 2013

**Currently vacant positions

Source: Office of the President

BERGEN COMMUNITY COLLEGE

President's Executive Team

2013*

Dr. B. Kaye Walter

President

Dr. Ursula Daniels

Executive Assistant to the President

Dr. Naydeen
Gonzalez-DeJesus

Vice President
Student Affairs

Laurie Francis

Executive Director
Bergen Community College Foundation

Dr. Yun Kim

Vice President
Institutional Effectiveness

James R. Miller

Executive Director
Human Resources

Dr. Ronald Milon

Vice President
Administrative Services

Dr. William
Mullaney

Vice President
Academic Affairs

*As of March 2013.

Source: Office of the President

BERGEN COMMUNITY COLLEGE

Programs by Degree, 2012-2013

TRANSFER PROGRAMS

Associate in Arts

Liberal Arts:

General Curriculum
Cinema Studies
Communication Arts
Economics
History
Literature
Philosophy
Political Science
Psychology
Religion
Social Sciences
Sociology
Women's Studies
World Languages and Cultures

Fine and Performing Arts:

Art
Music Arts
General
Computer-Based Recording
Electronic Music
Music Business
Theatre Arts
General Theatre Arts
Acting
Dance
Technical Production

Associate in Fine Arts

Music Business
Music Technology

Associate in Science

Natural Sciences or Mathematics:

General Curriculum
Biology
Biotechnology
Chemistry
Computer Science
Mathematics
Physics

Engineering Science

Professional Studies:

General Curriculum
Broadcasting
Business Administration:
Accounting
International Trade
Management
Marketing
Non-Profit Management
Criminal Justice
Education
Exercise Science
Information Technology
Journalism
Labor Studies
Social Work

CAREER PROGRAMS

Associate in Applied Sciences

Art:

Computer Animation
Graphic Design/Computer
Graphics

Business Administration:

Accounting
Banking, Credit & Finance
Paralegal Studies

Business Technologies:

Hotel/Restaurant/Hospitality:
Catering/Banquet Management
Hospitality Management
Information Technology
Networking Administration
Office Technology
Web Development and
Management

Health Professions:

Dental Hygiene
Diagnostic Medical Sonography
Health Science
Medical Office Assistant
Radiography
Respiratory Therapy
Veterinary Technology

Human Services:

Career Ladder: Education/Child
Development
Correctional Studies
Early Childhood Education
Law Enforcement Studies

Industrial and Design

Technologies:

Drafting & Design Technology
Electronics Technology
General Engineering Technology
Manufacturing Technology
Technical Studies

Medical Informatics

Nursing:

Day and Evening Sequences
LDN/AND Career Mobility Track

Science Technology:

Environmental Technology
Horticulture
Landscape Design/Building
Science Laboratory Technology

Certificate Programs

Computer Aided Drafting (CAD)
Computer Animation
Computer Graphics
Computer Science
Computer Technical/Help Desk Support
Culinary Arts
Culinary Science
Database Programming and Administration
E-Commerce: Business Emphasis
Environmental Technology
Exercise Science
Event Planning & Management
Floral Design
Grounds Management
Hospitality Management
Labor Studies
Landscaping
Legal Nurse Consultant
Medical Office Administrative Assistant
Music Business
Music Technology
Music Theatre
Office Technology
Piano Instruction/Pedagogy
Radiation Therapy Technology
Small Business Management
Surgical Technology
Transfer Studies: Liberal Arts
Transfer Studies: Science, Technology, and
Professional Studies
U.S. Studies
Vascular Technology

Certificate of Achievement Programs

Accounting Assistant
Baking
Biotechnology
Business Paraprofessional Management
Career Ladder: Education/Child
Development
Catering
Commercial Music Production
Environmental Technology
Finance
Geographic Information Systems (GIS)
Homeland Security & Emergency
Management
Hospitality Operations
Machine Tooling
Manufacturing Design
Marketing Assistant
Network Security
Non-profit Management
Private Security
Professional Cooking
Quality Assurance
Real Estate
Retailing
Special Imaging for Radiologic Technologists
Sports Management
Sports Merchandising

BERGEN COMMUNITY COLLEGE

Accreditation

COLLEGE

Middle States Commission on Higher Education

PROGRAMS

Nursing

National League for Nursing Accreditation Commission
New Jersey State Board of Nursing

Dental Hygiene

Commission on Dental Accreditation of the American Dental Association

Diagnostic Medical Sonography

American Registry of Diagnostic Medical Sonography (ARDMS)

Paralegal Studies

American Bar Association

Radiography

Joint Review Committee on Education in Radiologic Technology

Respiratory Therapy

Commission on Accreditation for Respiratory Care (CoARC)

Medical Office Assistant

Commission on Accreditation of Allied Health Education Programs

Surgical Technology

Commission on Accreditation of Allied Health Education Programs

Radiation Therapy

Joint Review Committee on Education in Radiologic Technology

Veterinary Technology

American Medical Association (AVMA)

Committee on Veterinary Technician Education and Activities (CVTEA)

Student Characteristics

Student Characteristics Highlights

- ✚ Tenth-day student enrollment at Bergen Community College decreased from 17,271 in Fall 2011 to 17,015 in Fall 2012. This small decrease of -1.4% is the first time enrollment has decreased since 2006.
- ✚ Continuing a ten-year trend, the number of full-time students exceeded the number of part-time students in the Fall 2012 semester by a ratio of 57% full-time to 43% part-time.
- ✚ The racial/ethnic characteristics of the student body remained fairly consistent from Fall 2011 to Fall 2012, with a slight increase in the number and percentage of nonwhite students.
- ✚ Students from over 130 different countries of citizenship attended BCC in Fall 2012, with the largest groups of non-US students hailing from Korea, Poland, Colombia, the Dominican Republic, and Peru.
- ✚ Enrollment in distance learning courses (online and hybrid) continued to increase. Consistent with the past few years, 24.9% of the students were enrolled in a distance education course in Fall 2012.

Fall 2008 - Fall 2012

Fall 2012 Total Known Race/Ethnicity

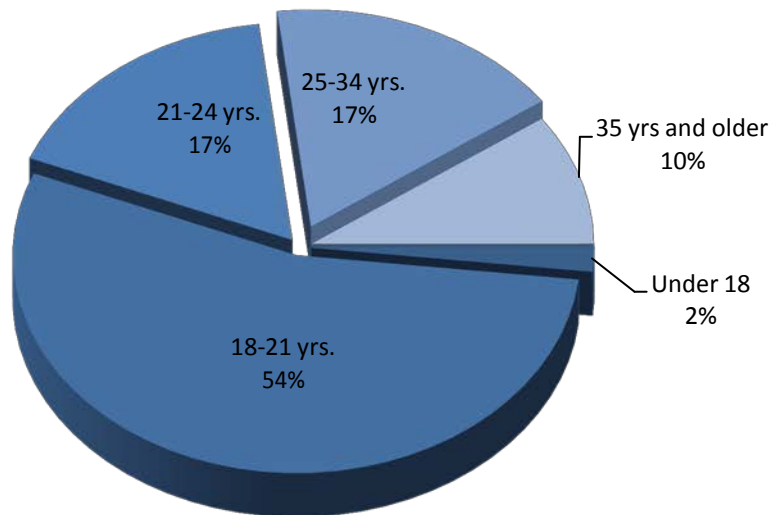


BERGEN COMMUNITY COLLEGE
Enrollment by Age, Gender and Status
Fall 2012

Age Ranges:	Full-Time		Part-Time		Total		All Students	
	Male	Female	Male	Female	Male	Female	Total	% of Total
Under 18 yrs.	116	109	37	41	153	150	303	1.8%
18 - 21 yrs.	3,519	3,187	1,462	1,084	4,981	4,271	9,252	54.4%
22 - 24 yrs.	714	575	787	808	1,501	1,383	2,884	16.9%
25 - 34 yrs.	471	561	787	1,087	1,258	1,648	2,906	17.1%
35 yrs and older	132	310	383	840	515	1,150	1,665	9.8%
Unknown	0	2	1	2	1	4	5	0.0%
Total	4,952	4,744	3,457	3,862	8,409	8,606	17,015	100.0%
Median Age (Years)	20.0	20.0	22.0	24.0	20.0	23.0	21.0	
Mean Age (Years)	21.2	22.2	25.2	28.4	21.7	26.9	23.9	

Source: SURE Enrollment File

Fall 2012 Enrollment by Age



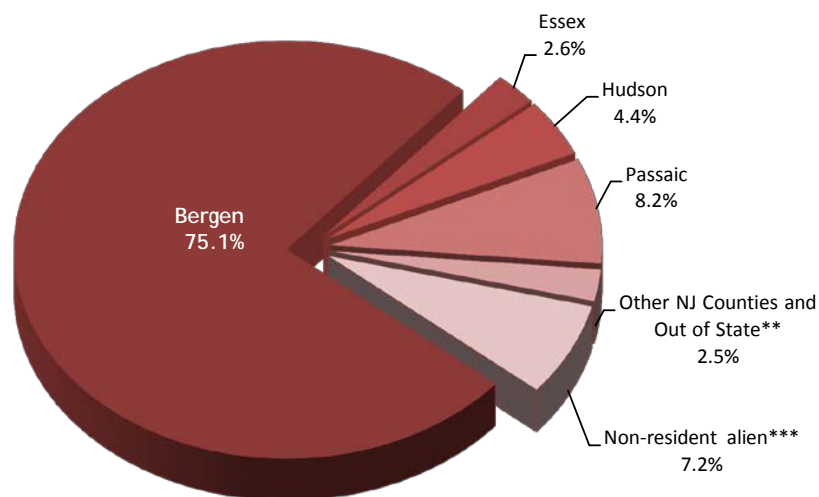
BERGEN COMMUNITY COLLEGE

Enrollment by County of Residence*

Fall 2012

County of Residence*	Full-Time	Part-Time	Total
Bergen	7,034	5,745	12,779
Essex	252	185	437
Hudson	474	283	757
Passaic	843	548	1,391
Other NJ Counties and Out of State**	228	195	423
Non-resident alien***	865	363	1,228
Total	9,696	7,319	17,015

Fall 2012 Enrollment by County of Residence



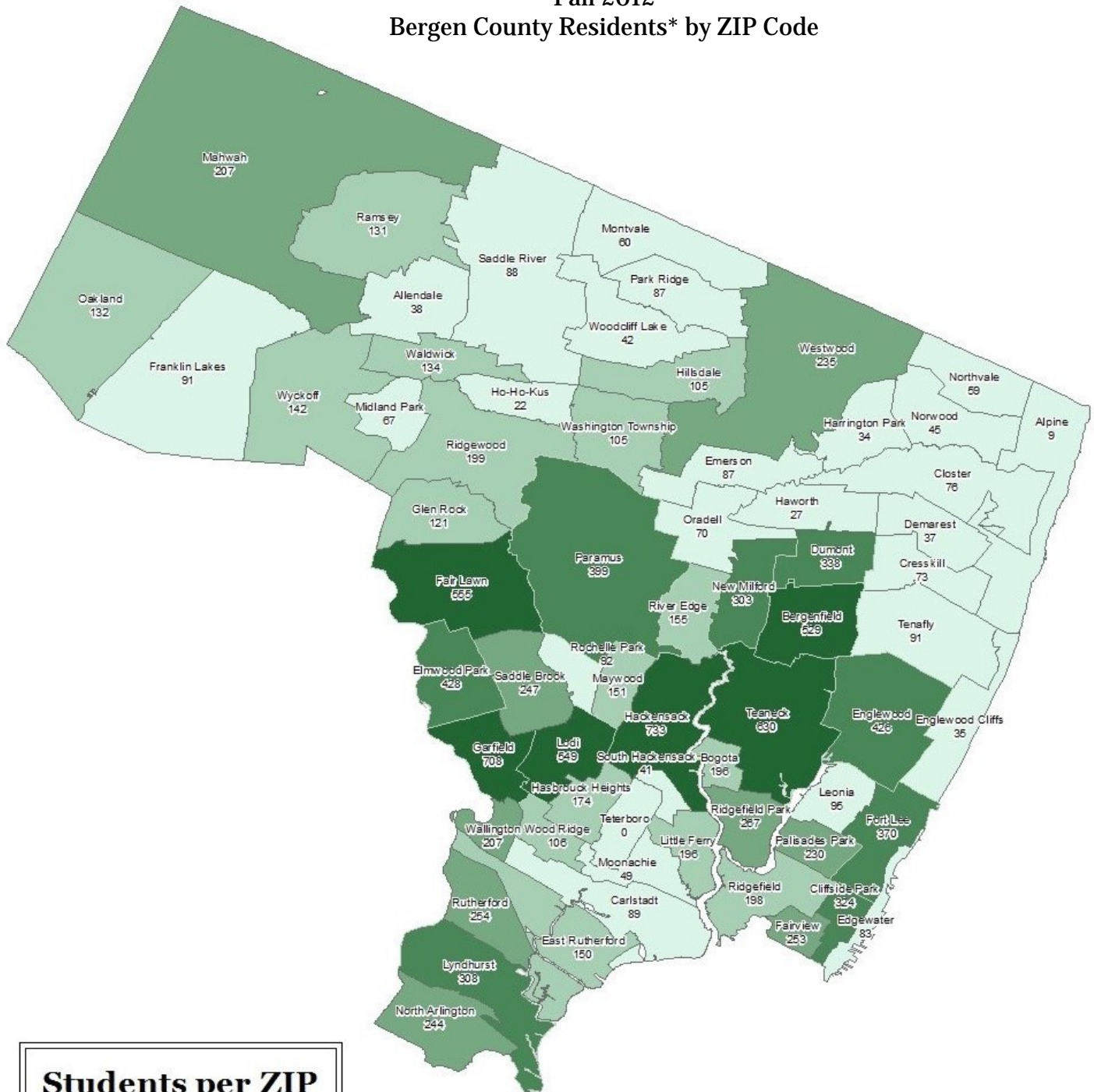
* Residence is defined as legal residence.

** Includes cases where County of Residence is unknown.

***Students with F-1/ other Visa status

Source: SURE Enrollment File

BERGEN COMMUNITY COLLEGE
Credit Student Residency
Fall 2012
Bergen County Residents* by ZIP Code



*Residency determined by mailing address.
Note: Localities which share ZIP codes with another town may not appear on the map.
Localities with no current BCC students may also not appear on the map.

BERGEN COMMUNITY COLLEGE

Enrollment by Country of Citizenship*

Fall 2010 - Fall 2012

COUNTRIES	2010	2011	2012	COUNTRIES	2010	2011	2012
United States	13,114	13,327	13,383	Germany	24	19	11
Mexico	50	50	42	United Kingdom	10	12	14
Canada	11	12	14	Italy	8	11	14
North America:	13,175	13,389	13,439	Spain	8	9	7
				Portugal	9	6	4
El Salvador	35	35	26	<i>Other: Western Europe</i>	22	18	27
Costa Rica	17	15	18	Western Europe:	81	75	77
Guatemala	14	15	22				
Honduras	11	10	10	Poland	349	263	239
Central America:	77	75	76	Albania	99	98	94
				Russia	60	62	57
Dominican Republic	176	192	172	Ukraine	40	45	31
Jamaica	90	106	94	Macedonia	53	40	48
Cuba	28	30	18	>> Former Yugoslavia, other	18	17	15
Trinidad and Tobago	26	26	20	Bulgaria	12	8	5
Haiti	13	14	14	Slovakia	11	7	12
West Indies/Caribbean:	333	368	318	Fmr. USSR / Western Asia	52	53	36
				<i>Other: Eastern Europe</i>	28	16	22
Colombia	389	362	320	Eastern Europe:	722	609	559
Peru	221	202	186	TOTAL: Europe	803	684	636
Ecuador	165	166	160				
Brazil	91	93	79	Turkey	124	114	123
Venezuela	26	29	26	Israel	24	34	21
Argentina	24	22	19	Syria	25	30	36
Chile	19	16	12	Iran	25	26	21
Guyana	15	10	15	Jordan	17	20	16
Bolivia	10	15	14	<i>Other: Middle East</i>	34	42	40
South America:	960	915	831	Middle East:	249	266	257
<i>Other: The Americas</i>	25	24	26				
TOTAL: The Americas	14,570	14,771	14,690	Republic of Korea	719	721	648
				Philippines	155	122	107
Egypt	50	48	46	China	49	55	70
Ghana	25	29	26	Japan	30	39	33
Nigeria	15	13	9	Thailand	16	11	6
South Africa	4	7	8	<i>Other: East Asia/Pacific Rim</i>	39	37	39
Kenya	8	10	13	East Asia/Pacific Rim:	1008	985	903
<i>Other</i>	63	53	67				
TOTAL: Africa	165	160	169	India	192	165	155
				Pakistan	38	34	32
Australia	5	5	5	Afghanistan	17	9	8
South Pacific Islands	1	3	4	<i>Other: Central/Southern Asia</i>	28	32	39
TOTAL: South Pacific	6	8	9	Central/Southern Asia:	275	240	234
				TOTAL: Asia	1,532	1,491	1,394
<i>Country Unknown</i>							
GRAND TOTAL	17,197	17,271	17,015				

* Countries of citizenship are self-reported.

Source: SURE Enrollment File

BERGEN COMMUNITY COLLEGE**Enrollment by Status, Historical****Fall 1968 - Fall 2012**

STATUS	1968	1969	1970	1971	1972	1973	1974	1975	1976
Full-Time	729	1,283	1,327	1,578	2,695	3,416	3,655	3,931	4,148
Part-Time	725	2,112	2,695	2,892	3,468	3,838	4,636	5,330	5,595
TOTAL	1,454	3,395	4,022	4,470	6,163	7,254	8,291	9,261	9,743

STATUS	1977	1978	1979	1980	1981	1982	1983	1984	1985
Full-Time	3,928	3,676	4,221	4,339	4,191	4,254	4,202	3,930	3,804
Part-Time	6,076	6,592	6,438	7,194	7,241	7,635	7,843	7,317	7,204
TOTAL	10,004	10,268	10,659	11,533	11,432	11,889	12,045	11,247	11,008

STATUS	1986	1987	1988	1989	1990	1991	1992	1993	1994
Full-Time	3,846	3,712	3,622	4,085	4,235	4,413	4,827	4,958	5,205
Part-Time	7,067	6,977	7,297	7,830	8,052	7,920	7,684	7,896	7,681
TOTAL	10,913	10,689	10,919	11,915	12,287	12,333	12,511	12,854	12,886

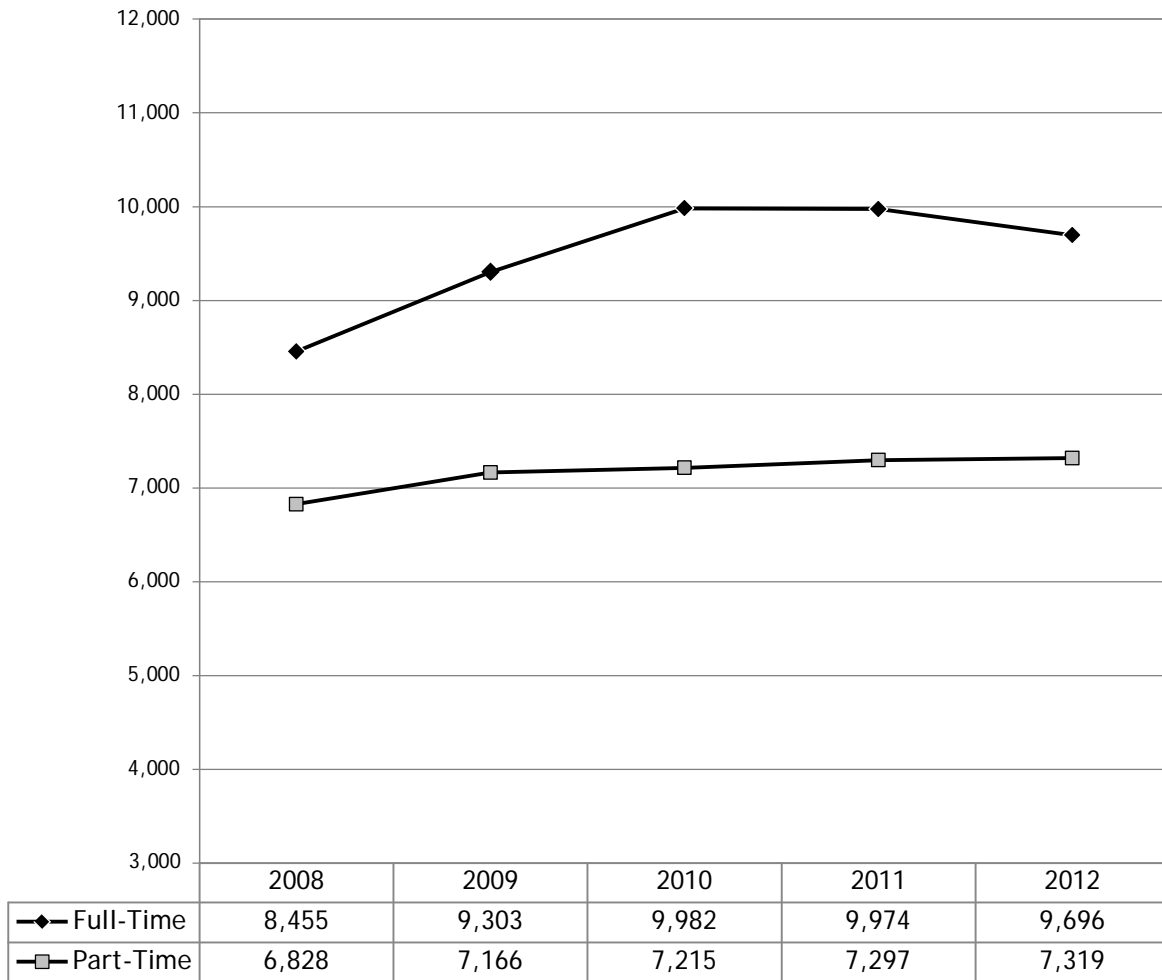
STATUS	1995	1996	1997	1998	1999	2000	2001	2002	2003
Full-Time	5,449	5,086	4,926	5,291	5,549	5,580	5,773	6,606	6,907
Part-Time	7,758	7,210	6,372	6,521	6,676	6,413	6,372	6,864	7,084
TOTAL	13,207	12,296	11,298	11,812	12,225	11,993	12,145	13,470	13,991

STATUS	2004	2005	2006	2007	2008	2009	2010	2011	2012
Full-Time	7,258	7,486	7,738	7,990	8,455	9,303	9,982	9,974	9,696
Part-Time	7,067	7,276	6,870	7,067	6,828	7,166	7,215	7,297	7,319
TOTAL	14,325	14,762	14,608	15,057	15,283	16,469	17,197	17,271	17,015

Source: SURE Enrollment File

BERGEN COMMUNITY COLLEGE

Enrollment by Status, Five-Year Fall 2008 - Fall 2012



Source: SURE Enrollment File

BERGEN COMMUNITY COLLEGE

Enrollment by Time of Day

Fall 2008 - Fall 2012

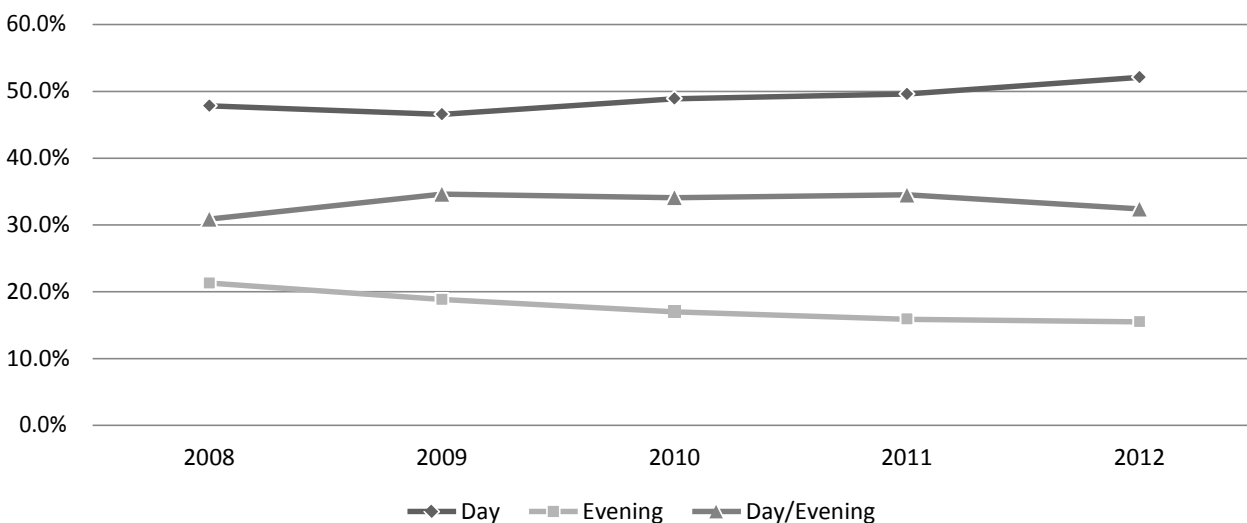
	2008		2009		2010		2011		2012	
	Number	%	Number	%	Number	%	Number	%	Number	%
Day	7,049	47.8%	7,437	46.5%	8,153	48.9%	8,283	49.6%	8,560	52.1%
Evening*	3,137	21.3%	3,009	18.8%	2,831	17.0%	2,649	15.9%	2,542	15.5%
Day/Evening	4,550	30.9%	5,533	34.6%	5,674	34.1%	5,755	34.5%	5,323	32.4%
TOTAL **	14,736		15,979		16,658		16,687		16,425	

*Includes Saturday classes

**Does not include students taking exclusively online courses

Source: Datatel

Fall 2012 Day/Evening Enrollment



BERGEN COMMUNITY COLLEGE

Distance Learning Enrollment

Fall 2008 - Fall 2012

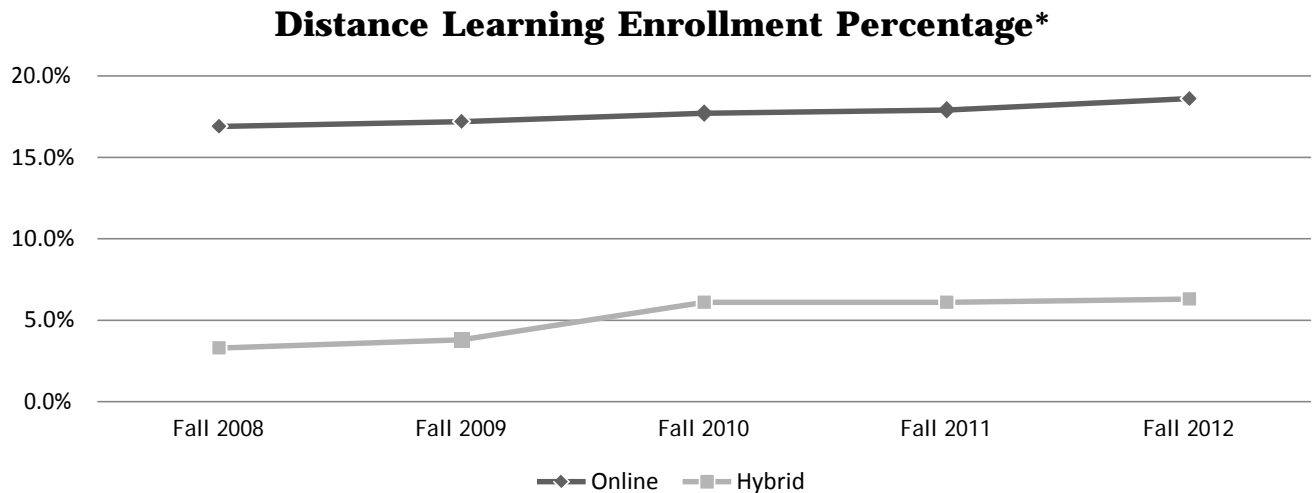
	2008		2009		2010		2011		2012	
	Number	%**	Number	%**	Number	%**	Number	%**	Number	%**
Online Enrollment	2,585	16.9%	2,833	17.2%	3,046	17.7%	3,098	17.9%	3,160	18.6%
Hybrid Enrollment	501	3.3%	626	3.8%	1,051	6.1%	1,054	6.1%	1,080	6.3%
TOTAL	3,086	20.2%	3,459	21.0%	4,097	23.8%	4,152	24.0%	4,240	24.9%

NOTE: Numbers indicate students enrolled in at least one online or hybrid course.

*Unduplicated headcount, based on 10th day numbers

** Percentage of total headcount

Source: Datatel



*Percentage of students enrolled in distance education, as a percentage of total headcount

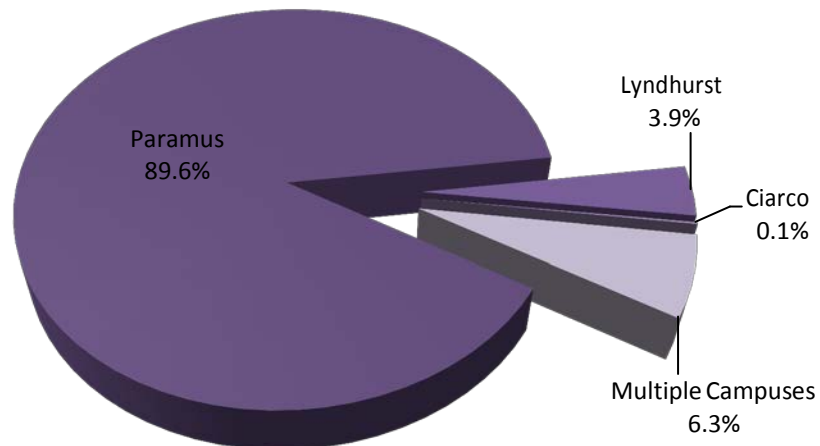
BERGEN COMMUNITY COLLEGE

Enrollment by Campus*

Fall 2012

Location	Total Students
Paramus	14,714
Lyndhurst	648
Ciarco Learning Center**	24
Multiple Campuses	1,039
Total	16,425

Fall 2012 Enrollment by Location



* Does not include students taking exclusively online courses

** Includes only students taking credit courses at Ciarco.

Source: SURE Enrollment File

Program Data

Program Highlights

- ✚ The proportion of degree-seeking students in Fall 2012 remained consistent with the last five years, at 92% of the student population.
- ✚ The percentage of students enrolled in transfer programs in Fall 2012 also increased slightly, to 73.5%.
- ✚ First-time, full-time, degree-seeking students represented 28% of all full-time students. This population also represented 19% of the total student population in Fall 2012, a slight increase from the previous year.
- ✚ Enrollment in Associate of Arts (A.A.) programs decreased by 12%, while enrollment in Associate of Science (A.S.) programs increased by 7% from Fall 2011 to Fall 2012.
- ✚ Enrollment in Associate of Applied Science (A.A.S.) programs decreased by 4.2% from Fall 2011 to Fall 2012, the first such decrease for the program in over five years.
- ✚ Programs with the largest five-year increases (by number) included General A.S. (NSM & PS), Psychology, Biology, Criminal Justice, and Art.
- ✚ Programs with the largest five-year decreases in number included General A.A. (Liberal Arts), and Information Technology

BERGEN COMMUNITY COLLEGE
Student Population by Degree Program
Fall 1977 - Fall 2012

	1977	1978	1979	1980	1981	1982	1983	1984	1985
Transfer Programs	2,775	2,792	2,807	2,810	3,022	2,965	3,001	3,101	3,239
Career Programs	3,375	3,350	3,694	3,849	3,982	4,145	4,277	3,799	3,562
Total Degree	6,150	6,142	6,501	6,659	7,004	7,110	7,278	6,900	6,801
Total Non-Degree	3,854	4,126	4,158	4,874	4,428	4,779	4,767	4,347	4,207
TOTAL	10,004	10,268	10,659	11,533	11,432	11,889	12,045	11,247	11,008

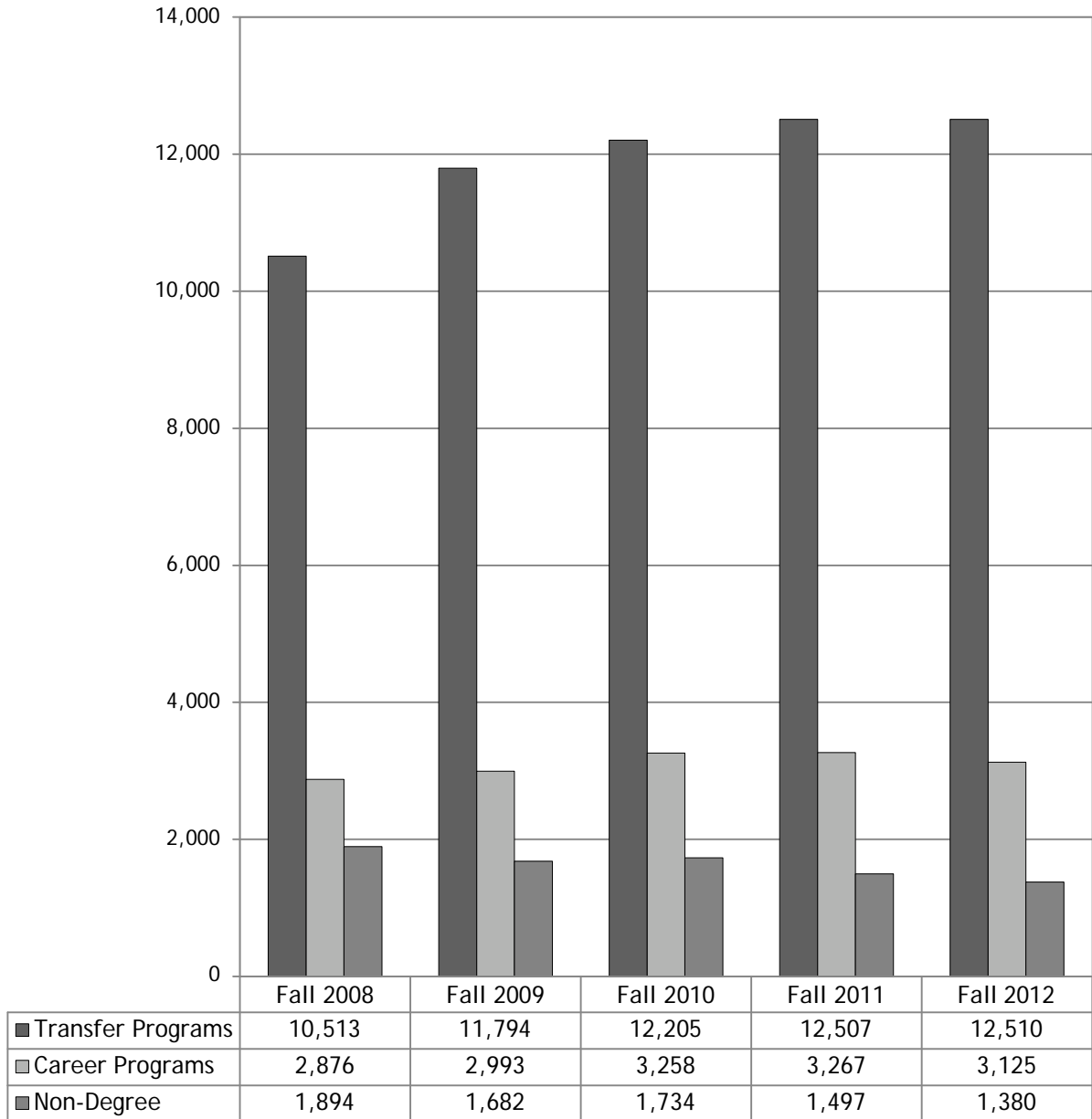
	1986	1987	1988	1989	1990	1991	1992	1993	1994
Transfer Programs	3,359	3,429	3,446	4,004	4,253	4,622	5,216	5,539	5,841
Career Programs	3,427	3,202	3,031	3,298	3,298	3,485	3,443	3,324	3,392
Total Degree	6,786	6,631	6,477	7,302	7,551	8,107	8,659	8,863	9,233
Total Non-Degree	4,127	4,058	4,442	4,613	4,736	4,226	3,852	3,991	3,653
TOTAL	10,913	10,689	10,919	11,915	12,287	12,333	12,511	12,854	12,886

	1995	1996	1997	1998	1999	2000	2001	2002	2003
Transfer Programs	6,061	5,605	5,441	5,854	5,591	5,737	6,074	7,142	7,834
Career Programs	3,310	3,164	2,926	3,027	2,998	2,940	2,989	3,281	3,355
Total Degree	9,371	8,769	8,367	8,881	8,589	8,677	9,063	10,423	11,189
Total Non-Degree	3,836	3,527	2,931	2,931	3,636	3,316	3,082	3,047	2,802
TOTAL	13,207	12,296	11,298	11,812	12,225	11,993	12,145	13,470	13,991

	2004	2005	2006	2007	2008	2009	2010	2011	2012
Transfer Programs	8,407	8,976	9,284	9,856	10,513	11,794	12,205	12,507	12,510
Career Programs	3,459	3,467	3,191	3,073	2,876	2,993	3,258	3,267	3,125
Total Degree	11,866	12,443	12,475	12,929	13,389	14,787	15,463	15,774	15,635
Total Non-Degree	2,459	2,319	2,133	2,128	1,894	1,682	1,734	1,497	1,380
TOTAL	14,325	14,762	14,608	15,057	15,283	16,469	17,197	17,271	17,015

Source: SURE Enrollment File

BERGEN COMMUNITY COLLEGE
Student Population by Degree Program
Fall 2008 - Fall 2012



BERGEN COMMUNITY COLLEGE
Student Population by Degree Program and Registration Status
Fall 2012

PROGRAMS	Full-Time	Part-Time	Total	Percent*
Transfer Programs:				
First Time Students	2,218	575	2,793	16.4%
Transfer Students	539	287	826	4.9%
Stop-out/Re-admit	538	876	1,414	8.3%
Continuing Students	4,537	2,940	7,477	43.9%
Career Programs:				
First Time Students	456	174	630	3.7%
Transfer Students	134	85	219	1.3%
Stop-out/Re-admit	114	266	380	2.2%
Continuing Students	884	1,012	1,896	11.1%
TOTAL DEGREE SEEKING	9,420	6,215	15,635	91.9%
Non-Degree Seeking:				
First Time Students	72	181	253	1.5%
Transfer Students	65	282	347	2.0%
Stop-out/Re-admit	39	269	308	1.8%
Continuing Students	100	372	472	2.8%
TOTAL NON-DEGREE SEEKING	276	1,104	1,380	8.1%
GRAND TOTAL	9,696	7,319	17,015	100.0%

* Percent of total enrollment.

Source: SURE Enrollment File

BERGEN COMMUNITY COLLEGE

Associate in Arts Number of Declared Majors Fall 2008 - Fall 2012

	2008			2009			2010			2011			2012		
	Full Time	Part Time	Total	Full Time	Part Time	Total	Full Time	Part Time	Total	Full Time	Part Time	Total	Full Time	Part Time	Total
Liberal Arts:															
General A.A.	2,138	1,248	3,386	2,131	1,189	3,320	2,042	1,095	3,137	1,832	1,082	2,914	1,498	931	2,429
Communication Arts	95	63	158	117	60	177	116	57	173	124	45	169	122	60	182
Cinema Studies	-	-	-	-	-	-	-	-	-	2	1	3	3	2	5
Economics	22	8	30	22	9	31	33	9	42	31	12	43	41	8	49
Global Studies	-	-	-	-	-	-	-	-	-	7	1	8	9	5	14
History	66	26	92	83	37	120	84	34	118	68	40	108	74	42	116
Literature	46	20	66	52	31	83	67	28	95	66	25	91	54	25	79
Philosophy	12	6	18	13	6	19	18	6	24	23	11	34	22	11	33
Political Science	34	21	55	44	24	68	63	18	81	64	21	85	52	20	72
Psychology	306	148	454	342	171	513	401	173	574	410	194	604	370	186	556
Religion	2	3	5	1	6	7	2	3	5	5	2	7	4	0	4
Sociology	35	15	50	30	15	45	40	20	60	53	23	76	37	22	59
Social Sciences	7	10	17	13	4	17	15	13	28	14	8	22	22	8	30
Women's Studies	2	1	3	1	2	3	3	0	3	4	0	4	2	2	4
World Languages & Cultures	29	12	41	24	14	38	29	12	41	33	12	45	36	8	44
Fine and Performing Arts:															
General*	-	-	-	-	-	-	-	-	-	-	-	-	3	2	5
Art	119	53	172	157	80	237	153	91	244	153	70	223	150	75	225
Cinema Studies	29	15	44	37	19	56	29	17	46	28	14	42	34	12	46
Music Arts-General	47	29	76	70	24	94	72	36	108	79	37	116	76	38	114
Music Arts-Business**	41	16	57	52	18	70	54	20	74	22	19	41	13	14	27
Music Arts-Comp. Record**	28	18	46	22	17	39	28	12	40	12	12	24	4	5	9
Music Arts-Electronic**	14	5	19	10	2	12	14	9	23	4	3	7	3	3	6
Theatre- Dance	9	3	12	16	5	21	14	2	16	17	5	22	13	6	19
Theatre- General	18	11	29	15	10	25	15	7	22	12	7	19	21	6	27
Theatre-Acting	25	15	40	30	18	48	35	11	46	39	11	50	30	10	40
Theatre - Tech. Prod.	9	4	13	9	4	13	9	5	14	6	6	12	5	2	7
TOTAL A.A.	3,133	1,750	4,883	3,291	1,765	5,056	3,336	1,678	5,014	3,108	1,661	4,769	2,698	1,503	4,201

	2008			2009			2010			2011			2012		
	Full Time	Part Time	Total	Full Time	Part Time	Total	Full Time	Part Time	Total	Full Time	Part Time	Total	Full Time	Part Time	Total
Associate in Fine Arts															
Music Business*	-	-	-	-	-	-	-	-	-	-	-	-	1	0	1
Music Technology*	-	-	-	-	-	-	-	-	-	-	-	-	1	1	2
TOTAL A.F.A.	-	-	-	-	-	-	-	-	-	-	-	-	2	1	3

Note: Dashes indicate program was not offered at that time.

*New programs

**Program has been discontinued

Source: SURE Enrollment File

BERGEN COMMUNITY COLLEGE

Associate in Science Number of Declared Majors Fall 2008 - Fall 2012

	2008			2009			2010			2011			2012		
	Full Time	Part Time	Total	Full Time	Part Time	Total	Full Time	Part Time	Total	Full Time	Part Time	Total	Full Time	Part Time	Total
Natural Sciences & Math:															
Gen. A.S. Nat.Sci./Math	208	107	315	221	124	345	274	131	405	283	139	422	315	150	465
Biology	125	63	188	195	92	287	247	112	359	258	130	388	289	146	435
Biotechnology	13	3	16	10	8	18	18	9	27	22	11	33	20	14	34
Chemistry	44	20	64	44	20	64	40	21	61	47	22	69	44	22	66
Computer Science	93	58	151	96	61	157	131	56	187	154	72	226	153	91	244
Mathematics	27	17	44	35	22	57	51	24	75	65	22	87	57	23	80
Physics	12	4	16	14	4	18	20	11	31	14	10	24	21	13	34
Pre-Chiropractic	3	4	7	1	3	4	0	1	1	0	0	0	0	0	0
Engineering Science:															
Engineering Science	103	59	162	126	89	215	155	93	248	183	112	295	219	104	323
Professional Studies:															
Aviation Administration*	-	-	-	-	-	-	-	-	-	-	-	-	0	1	1
General A.S. Pro.Studies	896	836	1,732	1,122	1,029	2,151	1,265	1,036	2,301	1,495	1,109	2,604	1,769	1,310	3,079
Broadcasting	50	37	87	51	33	84	58	31	89	65	34	99	60	30	90
Business Admin.	389	271	660	414	300	714	418	252	670	423	265	688	427	292	719
Bus.Admin.- Acct.	185	145	330	199	143	342	198	163	361	218	135	353	230	141	371
Bus.Admin.- Int'l Trade	71	31	102	68	51	119	74	40	114	53	33	86	49	18	67
Bus.Admin.- Mgmt.	213	138	351	235	173	408	232	162	394	202	161	363	205	144	349
Bus.Admin.-Marketing	133	69	202	154	70	224	150	66	216	137	67	204	133	73	206
Bus.Admin.-Non-Profit Mgmt.	-	-	-	-	-	-	2	2	4	3	1	4	2	3	5
Criminal Justice	464	156	620	593	232	825	635	252	887	676	264	940	554	302	856
Education	183	89	272	237	86	323	268	65	333	221	80	301	189	92	281
Exercise Science	74	38	112	86	52	138	105	44	149	118	67	185	125	61	186
Health Science*	-	-	-	-	-	-	-	-	-	-	-	-	1	6	7
Hospitality	-	-	-	-	-	-	3	0	3	9	4	13	13	10	23
Information Technology	14	9	23	27	13	40	33	11	44	51	27	78	74	25	99
Journalism	52	25	77	52	27	79	51	24	75	57	16	73	55	22	77
Labor Studies	-	-	-	-	-	-	-	-	-	3	2	5	1	3	4
Music Business	-	-	-	-	-	-	-	-	-	14	4	18	11	12	23
Music Technology	-	-	-	-	-	-	-	-	-	14	6	20	24	10	34
Social Work	58	41	99	72	54	126	89	68	157	94	66	160	92	56	148
TOTAL A.S.	3,410	2,220	5,630	4,052	2,686	6,738	4,517	2,674	7,191	4,879	2,859	7,738	5,132	3,174	8,306

Note: Dashes indicate that the program was not offered at that time.

*New Programs

Source: SURE Enrollment File

BERGEN COMMUNITY COLLEGE

Associate in Applied Science

Number of Declared Majors

Fall 2008 - Fall 2012

	2008			2009			2010			2011			2012		
	Full Time	Part Time	Total	Full Time	Part Time	Total	Full Time	Part Time	Total	Full Time	Part Time	Total	Full Time	Part Time	Total
Allied Health:															
Dental Hygiene	30	48	78	20	54	74	24	51	75	16	60	76	51	32	83
Diag. Med. Sonography	5	20	25	7	16	23	8	17	25	6	26	32	10	16	26
Health Sciences	0	7	7	1	3	4	0	3	3	0	3	3	1	0	1
Medical Laboratory Technologist*	0	0	0	0	0	0	0	0	0	0	1	1	0	1	1
Medical Office Assistant	33	34	67	32	37	69	44	45	89	78	57	135	87	78	165
Physical Therapy Asst.**	0	2	2	0	1	1	0	0	0	0	0	0	0	0	0
Radiography	31	27	58	14	46	60	12	47	59	22	42	64	22	47	69
Respiratory Therapy	38	26	64	40	32	72	34	33	67	35	31	66	31	37	68
Veterinary Tech.	14	27	41	22	23	45	26	16	42	14	19	33	29	13	42
Nursing:															
Nursing-Day & Evening	46	235	281	54	248	302	69	242	311	43	261	304	58	243	301
Business Administration:															
Accounting	145	123	268	168	107	275	179	118	297	178	129	307	147	98	245
e-Business Management***	-	-	-	-	-	-	-	-	-	-	-	-	0	1	1
Management Information Systems	-	-	-	-	-	-	-	-	-	1	1	2	0	0	0
Banking & Finance	107	60	167	86	47	133	80	43	123	93	42	135	72	59	131
Legal Studies	1	10	11	1	6	7	0	2	2	0	2	2	0	0	0
Legal Nurse Consultant**	5	4	9	1	3	4	0	2	2	0	2	2	0	0	0
Paralegal Studies	49	55	104	44	58	102	54	62	116	57	62	119	55	61	116
Business Technologies															
Hotel/Restaurant/Hospitality General***	-	-	-	-	-	-	-	-	-	-	-	-	9	7	16
HRM Catering/Banquet Mgmt.	38	19	57	46	16	62	46	26	72	48	30	78	22	17	39
HRM Culinary Entrepreneurship	-	-	-	-	-	-	12	3	15	35	12	47	54	16	70
HRM Culinary Event Planning & Mgmt.	-	-	-	-	-	-	6	3	9	16	10	26	17	12	29
HRM Hospitality Mgmt.	61	41	102	86	43	129	112	62	174	82	59	141	70	51	121
Music Business	-	-	-	-	-	-	-	-	-	11	2	13	11	12	23
Music Recording Technology	-	-	-	-	-	-	-	-	-	16	3	19	33	6	39
Travel and Tourism*	0	0	0	0	0	0	0	4	4	0	1	1	0	1	1
Information Technology:															
Database Management	-	-	-	-	-	-	5	1	6	16	8	24	13	10	23
Information Technology	37	46	83	53	49	102	48	42	90	18	20	38	7	17	24
Management Information Systems***	-	-	-	-	-	-	-	-	-	-	-	-	4	4	8
Networking Administration	46	47	93	57	42	99	72	56	128	80	79	159	75	74	149
Office Technology	6	9	15	11	5	16	13	13	26	15	10	25	15	9	24
Web Development & Mgmt.	15	11	26	21	14	35	13	6	19	22	10	32	17	14	31
Word Processing**	0	1	1	0	1	1	0	2	2	0	0	0	0	0	0
Medical Informatics	-	-	-	3	1	4	4	3	7	13	6	19	17	12	29
Human Services:															
Career Ladder: Education & Child Dev.	-	-	-	1	0	1	0	0	0	0	0	0	0	0	0
Correctional Studies	3	4	7	2	7	9	7	2	9	9	2	11	5	3	8
Early Childhood Education	128	82	210	156	95	251	140	95	235	119	88	207	103	89	192
Law Enforcement****	127	129	256	128	100	228	141	89	230	105	71	176	90	57	147
Industrial Design Tech:															
Computer Animation	41	33	74	47	23	70	45	23	68	38	23	61	44	17	61
Drafting and Design Tech.	35	40	75	38	40	78	40	36	76	48	33	81	38	41	79
Electronics Technology	41	19	60	30	18	48	27	36	63	34	32	66	17	22	39
Engineering Tech.-General	43	21	64	52	29	81	66	28	94	64	28	92	55	24	79
Graph Design/Comp. Graph	122	82	204	135	91	226	168	100	268	121	97	218	114	89	203
Manufacturing Technology	5	11	16	2	7	9	3	9	12	13	8	21	6	15	21
Technical Studies	0	0	0	0	0	0	1	1	2	2	0	2	2	0	2
Game Programming	-	-	-	-	-	-	-	-	-	16	6	22	19	6	25
Game Testing	-	-	-	-	-	-	-	-	-	3	7	10	9	5	14
Science Technology:															
Environmental Technology	4	4	8	11	7	18	8	8	16	8	3	11	5	4	9
Horticulture	12	16	28	11	12	23	13	17	30	8	13	21	6	11	17
Landscape/Design/Build	-	-	-	0	2	2	7	5	12	13	4	17	13	6	19
Science Laboratory Tech.	10	4	14	7	4	11	14	8	22	9	6	15	11	9	20
TOTAL A.A.S.	1,278	1,297	2,575	1,387	1,287	2,674	1,541	1,359	2,900	1,525	1,409	2,934	1,464	1,346	2,810

Note: Dashes indicate that the program was not offered at that time.

* Program was discontinued earlier, student readmitted under old program

** Program has been discontinued.

***New Programs

**** Law Enforcement Studies program includes students listed under old Criminal Justice designation.

Source: SURE Enrollment File

BERGEN COMMUNITY COLLEGE

Certificate Programs Number of Declared Majors Fall 2008 - Fall 2012

Certificates	2008			2009			2010			2011			2012		
	Full Time	Part Time	Total	Full Time	Part Time	Total	Full Time	Part Time	Total	Full Time	Part Time	Total	Full Time	Part Time	Total
Computer Aided Drafting	2	11	13	1	11	12	2	12	14	4	9	13	2	7	9
Computer Animation	6	4	10	4	5	9	4	4	8	3	0	3	4	0	4
Computer Graphics	16	7	23	8	8	16	9	9	18	5	6	11	4	7	11
Computer Help Desk	-	-	-	-	-	-	-	-	-	0	1	1	0	3	3
Computer Science	11	9	20	5	6	11	6	10	16	3	7	10	5	6	11
Computer Technical Support	4	13	17	9	6	15	7	9	16	4	5	9	3	10	13
Culinary Arts	10	17	27	17	16	33	21	13	34	8	23	31	13	22	35
Culinary Science	-	-	-	-	-	-	0	1	1	0	0	0	0	0	0
Database Programming and Admin	1	0	1	1	0	1	0	1	1	3	1	4	3	3	6
E-Commerce: Bus. Emphasis	1	1	2	0	0	0	1	2	3	2	4	6	2	2	4
Environmental Tech.	1	1	2	0	0	0	0	1	1	3	0	3	1	0	1
Event Planning & Management	-	-	-	1	2	3	3	2	5	3	1	4	4	1	5
Exercise Science	9	9	18	8	8	16	11	7	18	7	5	12	3	6	9
Floral Design	2	4	6	1	0	1	2	2	4	1	5	6	1	4	5
Grounds Management	-	-	-	-	-	-	-	-	-	0	2	2	0	1	1
Hospitality Management	4	5	9	8	3	11	6	5	11	7	8	15	2	4	6
Landscaping	3	3	6	2	5	7	5	3	8	3	4	7	2	6	8
Legal Nurse Consultant	-	-	-	-	-	-	-	-	-	0	1	1	0	1	1
Medical Office Admin. Asst.	4	8	12	6	11	17	6	13	19	17	11	28	22	17	39
Music Business	6	1	7	3	1	4	3	2	5	3	2	5	3	0	3
Music Technology	1	3	4	6	2	8	7	5	12	1	3	4	2	3	5
Music Theatre	-	-	-	-	-	-	0	1	1	1	0	1	2	1	3
Network & Web Development	1	0	1	0	2	2	1	0	1	0	0	0	1	0	1
Office Technology	4	6	10	1	7	8	0	5	5	1	3	4	2	3	5
Piano Instruction/Pedagogy	-	-	-	-	-	-	0	1	1	0	1	1	1	1	2
Radiation Therapy Technology	8	0	8	10	0	10	2	0	2	5	0	5	10	0	10
Small Business Mgmt.	13	8	21	6	10	16	13	10	23	14	5	19	6	7	13
Surgical Technology Day/Evening	8	11	19	19	12	31	2	31	33	2	19	21	0	21	21
Transfer Studies: Liberal Arts	11	3	14	19	3	22	11	5	16	11	4	15	7	2	9
Transfer Studies: Sci., Tech., & Prof. Std.	5	1	6	3	3	6	5	5	10	5	1	6	1	0	1
Travel Service	0	1	1	0	1	1	0	0	0	0	1	1	0	0	0
U.S. Studies	4	1	5	3	0	3	5	4	9	3	1	4	1	0	1
TOTAL CERTIFICATES	135	127	262	141	122	263	132	163	295	119	133	252	107	138	245

Certificates of Achievement	2008			2009			2010			2011			2012		
	Full Time	Part Time	Total	Full Time	Part Time	Total	Full Time	Part Time	Total	Full Time	Part Time	Total	Full Time	Part Time	Total
Accounting Assistant	-	-	-	-	-	-	2	0	2	3	5	8	0	2	2
Baking	-	-	-	-	-	-	1	1	2	0	1	1	0	2	2
Biotechnology	3	0	3	4	2	6	2	3	5	4	2	6	1	1	2
Business Paraprofessional Mgmt.	-	-	-	1	0	1	1	0	1	2	1	3	3	4	7
Career Ladder Education/Child Development	-	-	-	-	-	-	-	-	-	3	2	5	0	5	5
Commercial Music Production	3	2	5	4	3	7	2	0	2	2	1	3	1	2	3
CNC Programming*	-	-	-	-	-	-	-	-	-	-	-	-	0	1	1
Environmental Technology	1	0	1	3	1	4	0	2	2	0	1	1	1	0	1
Finance	3	0	3	0	1	1	0	0	0	1	2	3	1	0	1
Fire Science	-	-	-	-	-	-	-	-	-	2	5	7	4	2	6
Forensic Science	-	-	-	-	-	-	-	-	-	2	0	2	2	3	5
Geographic Information Systems	1	0	1	2	1	3	0	1	1	0	2	2	0	0	0
Homeland Security & Emergency Mgmt.	-	-	-	1	1	2	2	3	5	5	1	6	0	4	4
Hospitality Operations	-	-	-	-	-	-	1	0	1	0	0	0	0	0	0
Manufacturing Design	1	0	1	3	1	4	3	1	4	1	2	3	0	2	2
Marketing Assistant	-	-	-	-	-	-	-	-	-	1	0	1	0	4	4
Machine Tooling	3	3	6	0	4	4	1	1	2	0	4	4	0	2	2
Network Security	-	-	-	0	1	1	1	2	3	0	1	1	0	2	2
Non-profit Management	-	-	-	1	1	2	1	3	4	1	1	2	0	0	0
Private Security*	-	-	-	-	-	-	-	-	-	-	-	-	0	2	2
Professional Cooking	0	4	4	2	3	5	5	4	9	3	5	8	0	5	5
Quality Assurance	2	1	3	3	4	7	1	11	12	1	2	3	0	1	1
Real Estate	5	4	9	6	1	7	2	2	4	2	1	3	1	2	3
Retailing	-	-	-	-	-	-	1	0	1	0	0	0	0	2	2
Sports Management	-	-	-	1	0	1	2	1	3	3	6	9	3	4	7
Welding Technology*	-	-	-	-	-	-	-	-	-	-	-	-	0	1	1
TOTAL C.O.A.	22	14	36	31	24	55	28	35	63	36	45	81	17	53	70

Note: Dashes indicate that the program was not offered at that time.

*New programs

Source: SURE Enrollment File

BERGEN COMMUNITY COLLEGE

Transfer Programs Five-Year Change Fall 2008 - Fall 2012

	2008	2012	Chng.	% Chng.
Psychology	454	556	102	22.5%
Art	172	225	53	30.8%
Music Arts-General	76	114	38	50.0%
Communication Arts	158	182	24	15.2%
History	92	116	24	26.1%
Economics	30	49	19	63.3%
Political Science	55	72	17	30.9%
Philosophy	18	33	15	83.3%
Literature	66	79	13	19.7%
Social Sciences	17	30	13	76.5%
Sociology	50	59	9	18.0%
Theatre- Dance	12	19	7	58.3%
General	0	5	5	100.0%
World Languages & Cultures	41	44	3	7.3%
Cinema Studies	44	46	2	4.5%
Women's Studies	3	4	1	33.3%
Theatre-Acting	40	40	0	0.0%
Religion	5	4	-1	-20.0%
Theatre- General	29	27	-2	-6.9%
Theatre - Tech. Prod.	13	7	-6	-46.2%
Music Arts-Electronic	19	6	-13	-68.4%
Music Arts-Business	57	27	-30	-52.6%
Music Arts-Comp. Record	46	9	-37	-80.4%
General A.A.	3,386	2,429	-957	-28.3%
All AA Majors	4,883	4,201	-682	-14.0%

**New and discontinued programs excluded.*

	2008	2012	Chng.	% Chng.
General A.S. Pro.Studies	1732	3079	1347	77.8%
Biology	188	435	247	131.4%
Criminal Justice	620	856	236	38.1%
Engineering Science	162	323	161	99.4%
Gen. A.S. Nat.Sci./Math	315	465	150	47.6%
Computer Science	151	244	93	61.6%
Information Technology	23	99	76	330.4%
Exercise Science	112	186	74	66.1%
Business Admin.	660	719	59	8.9%
Social Work	99	148	49	49.5%
Bus.Administration/Acct.	330	371	41	12.4%
Mathematics	44	80	36	81.8%
Biotechnology	16	34	18	112.5%
Physics	16	34	18	112.5%
Education	272	281	9	3.3%
Bus.Admin.-Marketing	202	206	4	2.0%
Broadcasting	87	90	3	3.4%
Chemistry	64	66	2	3.1%
Journalism	77	77	0	0.0%
Bus.Administration/Mgmt.	351	349	-2	-0.6%
Bus.Administration/Int'l Trade	102	67	-35	-34.3%
All AS Majors	5,630	8,306	2,676	47.5%

BERGEN COMMUNITY COLLEGE

Career Programs*

Five-Year Change

Fall 2008 - Fall 2012

	2008	2012	Chng.	% Chng.
Medical Office Assistant	67	165	98	146.3%
Culinary Entrepreneurship	0	70	70	100.0%
Networking Administration	93	149	56	60.2%
Nursing-Day & Evening	281	301	20	7.1%
Hospitality Management	102	121	19	18.6%
Engineering Technology-General	64	79	15	23.4%
Paralegal Studies	104	116	12	11.5%
Radiography	58	69	11	19.0%
Office Technology	15	24	9	60.0%
Science Laboratory Tech.	14	20	6	42.9%
Dental Hygiene	78	83	5	6.4%
Web Development & Mgmt.	26	31	5	19.2%
Manufacturing Technology	16	21	5	31.3%
Respiratory Therapy	64	68	4	6.3%
Drafting and Design Tech.	75	79	4	5.3%
Technical Studies	0	2	2	100.0%
Diag. Med. Sonography	25	26	1	4.0%
Veterinary Tech.	41	42	1	2.4%
Correctional Studies	7	8	1	14.3%
Environmental Technology	8	9	1	12.5%
Graph Design/Comp. Graph	204	203	-1	-0.5%
Health Sciences	7	1	-6	-85.7%
Horticulture	28	17	-11	-39.3%
Computer Animation	74	61	-13	-17.6%
Catering/Banquet Mgmt.	57	39	-18	-31.6%
Early Childhood Education	210	192	-18	-8.6%
Electronics Technology	60	39	-21	-35.0%
Accounting	268	245	-23	-8.6%
Banking & Finance	167	131	-36	-21.6%
Information Technology	83	24	-59	-71.1%
Law Enforcement	256	147	-109	-42.6%
All AAS Majors	2,575	2,810	235	9.1%

*Certificate programs not included due to high turnover.

Note: New and discontinued programs excluded.

**Some AAS Law Enforcement majors reclassified into AS Criminal Justice

BERGEN COMMUNITY COLLEGE

Course Enrollments by Discipline

Fall 2012

Program Code	Program Name	Total Enrollments	Percentage
ACC	Accounting	1,065	1.72%
ADV	PODs	198	0.32%
ALP	American Language Program	3,045	4.90%
ANT	Anthropology	464	0.75%
ART	Art	1,907	3.07%
BIO	Biological Sciences	3,086	4.97%
BNF	Banking & Finance	165	0.27%
BUS	Business Administration	1,691	2.72%
CHM	Chemistry	1,236	1.99%
CIN	Cinema	212	0.34%
CIS	Computer Science	490	0.79%
COM	Communication	2,543	4.10%
CRJ	Criminal Justice	1,332	2.14%
DAN	Dance	93	0.15%
DFT	Drafting & Design	210	0.34%
DHY	Dental Hygiene	262	0.42%
DMS	Ultrasound/Diagnostic Medical Sonography	104	0.17%
EBS	English Basic Skills	5,230	8.42%
ECO	Economics	580	0.93%
EDU	Education	531	0.86%
ELC	Electronics Technology	63	0.10%
FIR	Environmental Technology	17	0.03%
GAM	Games	44	0.07%
GEO	Geography	373	0.60%
HIS	History	3,060	4.93%
HRM	Hotel/Restaurant/Hospitality	605	0.97%
HRT	Horticulture	129	0.21%
HSE	Homeland Security	29	0.05%
INF	Information Technology	942	1.52%
IST	Interdisciplinary Studies	615	0.99%
LAN	World Languages & Cultures	1,626	2.62%
LGL	Legal Studies	244	0.39%
LIT	Literature	802	1.29%
MAT	Mathematics	7,907	12.73%
MFG	Manufacturing Technology	33	0.05%
MOA	Medical Office Assistant	227	0.37%
MUA	Applied Music	182	0.29%
MUS	Music	1,619	2.61%
NUR	Nursing	657	1.06%
PHR	Philosophy & Religion	2,713	4.37%
PHY	Physics	676	1.09%
POL	Political Science	427	0.69%
PSY	Psychology	3,381	5.44%
RAD	Radiography	206	0.33%
REA	Real Estate	85	0.14%
RSP	Respiratory Therapy	218	0.35%
RTT	Radiation Therapy	15	0.02%
SOC	Sociology	2,488	4.01%
SPE	Speech Communication	686	1.10%
SUR	Surgical Technology	106	0.17%
TEC	Technological Sciences	56	0.09%
THR	Theatre	499	0.80%
VET	Veterinary Technology	233	0.38%
WEX	Wellness & Exercise Science	1,830	2.95%
WRT	Writing	4,862	7.83%
Total		62,099	

SOURCE: SURE Enrollment File

Number of Credits

Credit Highlights

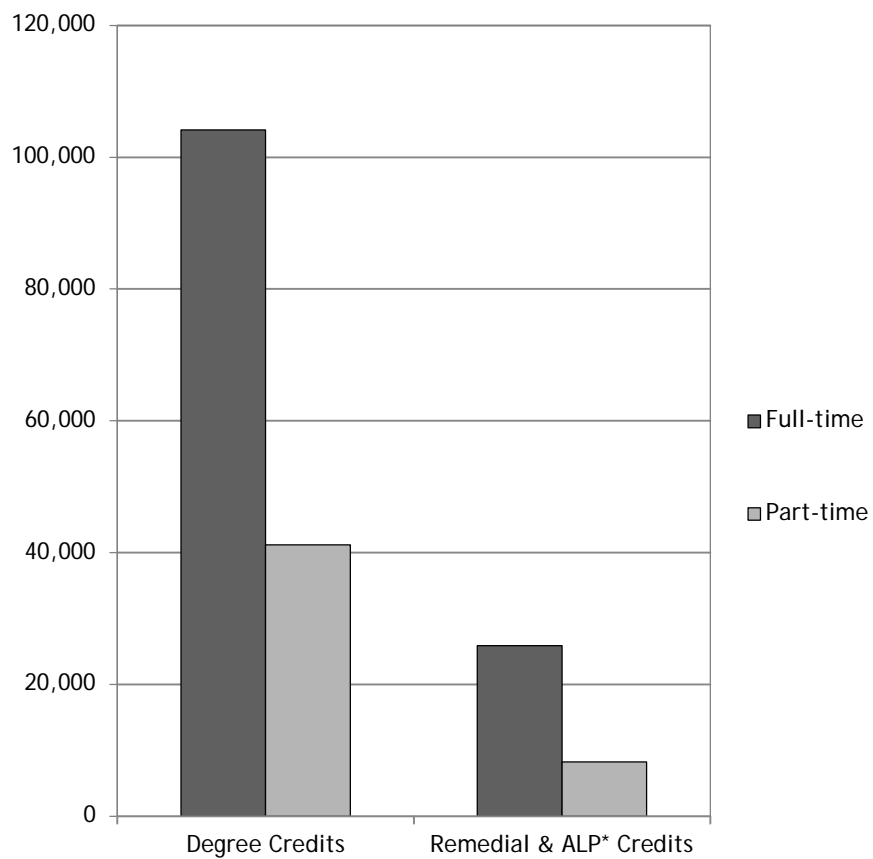
- ✚ In the Fall 2012 semester, students were enrolled in a total of 179,442 credits, a slight decrease from the previous year.
- ✚ Eighty-one percent (81%) of these credit enrollments were degree credits with the remaining 19% consisting of credits from remedial and American Language Program courses.
- ✚ Of the total enrolled credits in Fall 2012, 72.1% were generated by full-time students, a slight decrease of -0.5% from the previous year.
- ✚ The percentage of total semester credits consisting of credits from distance education courses (online and hybrid) has increased slightly, from 10% in Fall 2011 to 10.4% in Fall 2012.
- ✚ The percentage of student credits taken at Lyndhurst decreased slightly, from 4.0% in Fall 2011 to 3.6% in Fall 2012.

BERGEN COMMUNITY COLLEGE

Credits by Student Status

Fall 2012

Student Status	Degree Credits	Remedial & ALP* Credits	Total
Full-time	104,170	25,875	130,045
Part-time	41,163	8,234	49,397
Total	145,333	34,109	179,442



* American Language Program

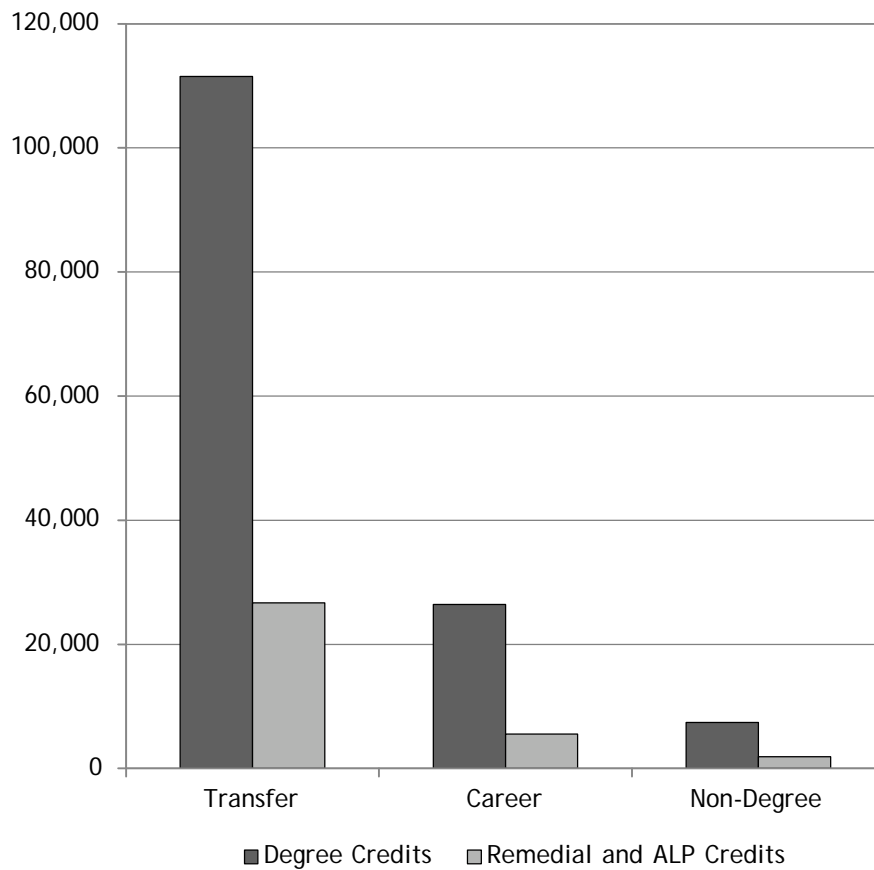
Source: SURE Enrollment File

BERGEN COMMUNITY COLLEGE

Credits by Degree Program

Fall 2012

	Degree Credits	Remedial & ALP* Credits	Total
Transfer Programs	111,509	26,677	138,186
Career Programs	26,407	5,531	31,938
Total Degree	137,916	32,208	170,124
Non-Degree	7,417	1,901	9,318
Total	145,333	34,109	179,442



* American Language Program

Source: SURE Enrollment File

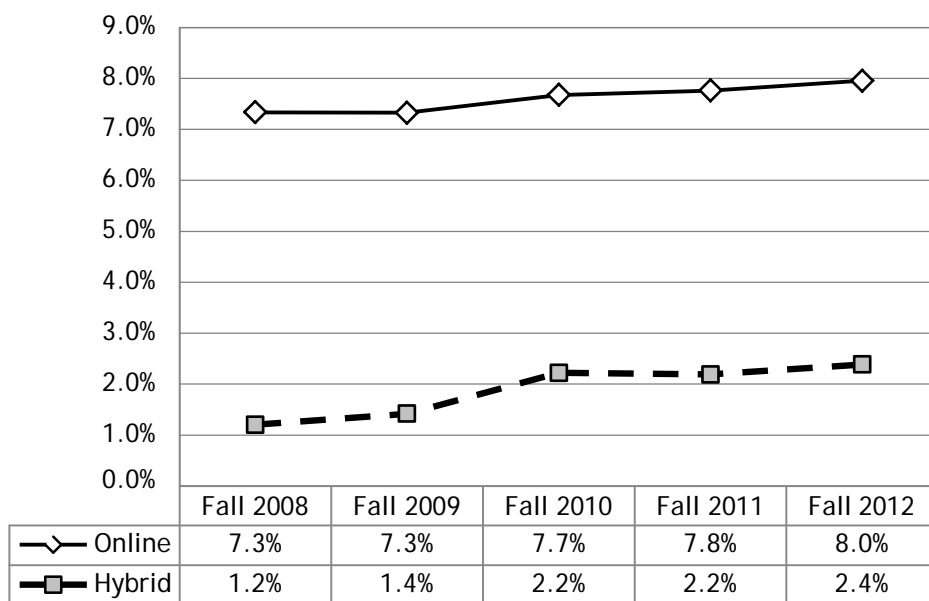
BERGEN COMMUNITY COLLEGE

Credits by Modality*

Fall 2008 - Fall 2012

Student Status	Fall 2008	Fall 2009	Fall 2010	Fall 2011	Fall 2012
Online	11,572	12,578	13,923	14,183	14,255
Hybrid	1,899	2,439	4,025	4,001	4,312
Traditional	146,175	156,370	163,164	164,544	160,698
Total*	159,646	171,387	181,112	182,728	179,265

Distance Learning Percentage of Total Credits**



*Because of a discrepancy between the way enrollment and course enrollment files are calculated, total credits may not match totals reported elsewhere

**Percentage of online and hybrid credits out of total semester credits

Source: Datatel Course Enrollment

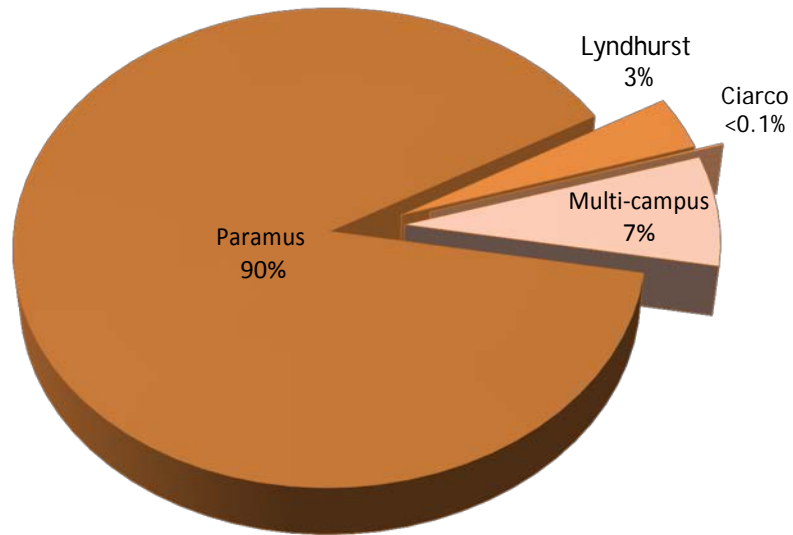
BERGEN COMMUNITY COLLEGE

Credits by Location*

Fall 2012

Location	Degree Credits	Remedial & ALP Credits	Total
Paramus	129,718	31,035	160,753
Lyndhurst	4,985	1,389	6,374
Ciarco	66	27	93
Multi-campus	10,564	1,658	12,222
Total	145,333	34,109	179,442

Fall 2012 Credits by Location



*Location reflects credits for students enrolled in all of their courses at specified educational site

Source: SURE Enrollment File

Non- Credit Enrollment

Non-credit Enrollment Highlights

- ❏ Non-credit enrollments are offered in three areas: Continuing Education, Ciarco Learning Center and the Institute for Learning in Retirement. The two main categories of non-credit enrollment courses are Open Enrollment and Customized Training.
- ❏ The total unduplicated headcount of the Open Enrollment courses in all non-credit areas for FY 2012 was 8,089 students, a slight increase from FY 2011. An additional 1,225 students were enrolled in Customized Training courses in the Continuing Education area in FY 2012.
- ❏ The total number of contact hours by non-credit students was 495,483 in FY 2012, an increase of 11% from FY 2011.

BERGEN COMMUNITY COLLEGE**Continuing Education Enrollment****Fiscal Year 2012**

		Open Enrollment	Customized Training	Total
	Unduplicated headcount	4,383	1,225	5,608
Number of enrollments	Fundable enrollments	721	0	721
	Non fundable enrollments	6,383	1,861	8,244
	Total enrollments*	7,104	1,861	8,965
Contact hours	Fundable contact hours	28,769	0	28,769
	Non fundable contact hours	144,251	12,186	156,437
	Total contact hours	173,020	12,186	185,206
Enrollments by audience	Adult	5,883	1,861	7,744
	Child	1,221	0	1,221
	Senior	0	0	0
	Total enrollments	7,104	1,861	8,965
Enrollments by Content	Career	4,991	1,861	6,852
	Avocational	2,113	0	2,113

Source: SURE Non-Credit Enrollment File

*There may be duplication of individuals in open enrollment courses and customized training

Open enrollment courses included are those which began within FY2012. The customized training courses are those which ended within FY2012

BERGEN COMMUNITY COLLEGE**Ciarco Learning Center Enrollment****Fiscal Year 2012**

Open Enrollment		
	Unduplicated headcount	2,930
Number of enrollments	Fundable enrollments	2,194
	Non fundable enrollments	4,450
	Total enrollments	6,644
Contact hours	Fundable contact hours	139,102
	Non fundable contact hours	142,436
	Total contact hours	281,538
Enrollments by audience	Adult	6,644
	Youth	0
	Senior	0
	Total enrollments	6,644
Enrollments by content	Career	6,644
	Avocational	0

*Source: SURE Non-Credit Enrollment File**Open enrollment courses included are those which began within FY2012*

BERGEN COMMUNITY COLLEGE
Institute for Learning in Retirement (ILR) Enrollment
Fiscal Year 2012

		Open Enrollment
	Unduplicated headcount	776
Number of enrollments	Fundable enrollments	0
	Non fundable enrollments	4,067
	Total enrollments	4,067
Contact hours	Fundable contact hours	0
	Non fundable contact hours	29,139
	Total contact hours	29,139
Enrollments by audience	Senior	4,067
	Adult	0
	Total enrollments	4,067
Enrollments by content	Career	0
	Avocational	4,067

Source: SURE Non-Credit Enrollment File

Open enrollment courses included are those which began within FY2012

Degrees Awarded

Degrees Awarded Highlights

- ✚ The 2,039 degrees and certificates awarded to students during the 2012 academic year, a 0.5% increase from 2011, once again set a new high for the college.
- ✚ The number of degrees awarded in Transfer Programs (A.A. and A.S) remained relatively consistent, from 1,511 in 2011 to 1,513 in 2012. Degrees awarded in A.A. programs decreased by -20% from Fall 2011 to Fall 2012.
- ✚ The number of degrees awarded in Career Programs (A.A.S and Certificate/COA) increased by 2%, from 516 in 2011 to 526 in 2012.

BERGEN COMMUNITY COLLEGE

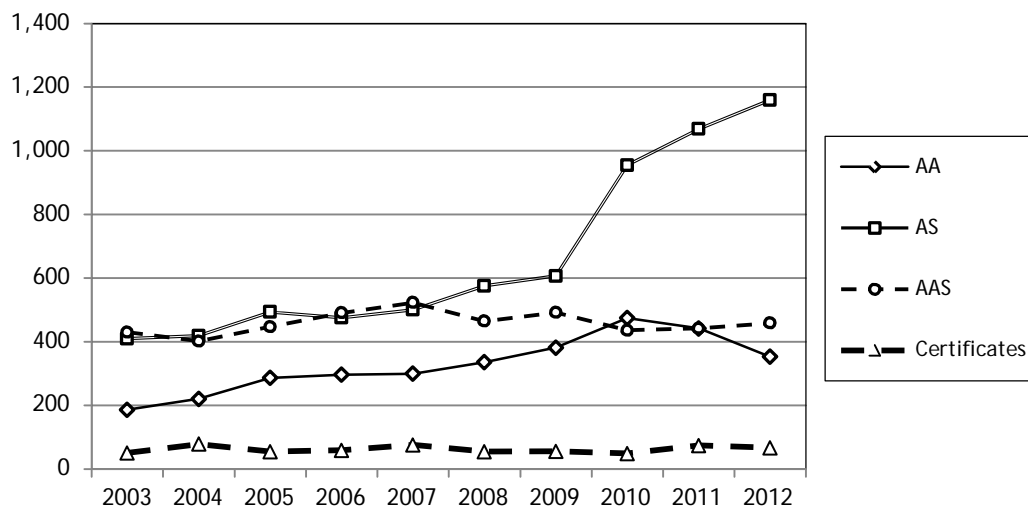
Degrees and Certificates Awarded

2003 - 2012

DEGREE PROGRAM	2003	2004	2005	2006	2007
A.A. Degrees	187	221	287	297	300
A.S. Degrees	410	419	494	476	523
Total Transfer Programs	597	640	781	773	823
A.A.S. Degrees	430	402	447	491	501
Certificates	51	79	55	59	76
Total Career Programs	481	481	502	550	577
TOTAL DEGREES AWARDED	1,078	1,121	1,283	1,323	1,400

DEGREE PROGRAM	2008	2009	2010	2011	2012
A.A. Degrees	336	382	475	442	353
A.S. Degrees	577	607	955	1,069	1,160
Total Transfer Programs	913	989	1,430	1,511	1,513
A.A.S. Degrees	465	492	437	442	459
Certificates	55	61	49	74	67
Total Career Programs	520	553	486	516	526
TOTAL DEGREES AWARDED	1,433	1,542	1,916	2,027	2,039

Source: BCHEPR10, SURE Graduate File



BERGEN COMMUNITY COLLEGE

Associate in Arts
Degrees Awarded
2008 - 2012

Programs	2008	2009	2010	2011	2012
Liberal Arts:					
General A.A.	235	249	319	261	180
Cinema Studies	1	1	3	1	3
Communication Arts	9	17	16	22	18
Economics	1	1	1	3	0
Foreign Languages	3	2	5	3	5
History	5	15	9	11	6
Literature	7	5	7	6	10
Philosophy and Religion	3	3	3	4	1
Political Science	2	4	3	4	9
Psychology	41	42	46	57	56
Social Science	0	1	2	1	3
Sociology	7	4	5	4	8
Women's Studies	0	0	1	0	1
Fine and Performing Arts:					
Art	8	18	30	37	27
Music-General	2	8	8	12	8
Music-Business	6	5	5	5	7
Music-Computer Based Recording	0	2	3	4	2
Music-Electronic	1	1	0	1	1
Theater Arts-General	2	3	2	2	3
Theater Arts-Acting	2	1	3	1	4
Theater Arts-Tech. Prod.	0	1	3	2	1
Theater Arts-Dance	1	1	1	1	0
TOTAL A.A.	336	384	475	442	353

Source: SURE Graduate File

BERGEN COMMUNITY COLLEGE

Associate in Science

Degrees Awarded

2008 - 2012

Programs	2008	2009	2010	2011	2012
Natural Sciences and Mathematics:					
General A.S. - Natural Sciences and Mathematics	40	33	52	63	67
Biology	7	10	7	6	18
Biotechnology	0	0	2	5	1
Chemistry	2	4	3	6	4
Computer Science	9	11	16	14	14
Mathematics	3	2	2	3	3
Physics	0	1	0	0	1
Engineering Science:					
Engineering Science	8	1	6	4	2
Professional Studies:					
General A.S. - Professional Concentration	221	261	399	534	624
Broadcasting	9	5	10	10	17
Business Administration	75	67	146	110	132
Business Administration - Accounting	62	76	71	62	55
Business Administration- Hospitality*	0	0	0	0	3
Business Administration - International Trade	13	16	17	20	10
Business Administration - Management	43	39	75	69	54
Business Administration - Marketing	23	20	32	29	24
Criminal Justice	24	27	59	73	74
Education	13	14	18	12	7
Exercise Science	12	9	18	19	20
Information Technology	0	0	5	4	4
Journalism	4	3	6	2	5
Social Work	9	6	11	24	21
TOTAL A.S.	577	605	955	1069	1160

*New degree awarded

Source: SURE Graduate File

BERGEN COMMUNITY COLLEGE

Associate in Applied Science

Degrees Awarded

2008 - 2012

Programs	2008	2009	2010	2011	2012
Health Professions:					
Dental Hygiene	34	37	37	38	30
Diagnostic Medical Sonography	11	11	10	10	8
Health Science	0	0	3	5	5
Medical Laboratory Technology*	1	0	0	1	0
Medical Office Assistant	14	18	9	22	16
Physical Therapist Assistant*	1	0	0	0	0
Radiography	38	37	28	20	28
Respiratory Therapy	39	28	29	29	25
Medical Informatics	0	0	0	1	2
Health Science	4	10	0	0	0
Veterinary Technology	3	17	19	23	19
Nursing:					
Nursing-Day & Evening	103	94	104	111	125
Business Administration:					
Accounting	13	18	17	13	14
Banking and Finance	7	7	5	5	4
Legal Nurse Consultant*	4	2	2	0	0
Legal Assistant	0	4	0	0	2
Paralegal	12	31	20	17	11
Business Technologies:					
Hospitality Management	15	17	23	16	19
Catering/Banquet Management	7	11	4	4	4
Culinary Entrepreneurship**	0	0	0	0	3
Database Management	0	0	0	1	2
Information Technology	4	3	6	10	4
Networking Administration	24	19	12	13	33
Office Technology	3	1	1	2	0
Travel and Tourism*	0	0	0	1	0
Web Development/Management	4	4	2	1	6
Human Services:					
Corrections	1	1	0	1	0
Early Childhood Education	13	12	10	12	13
Law Enforcement***	56	59	39	35	21
Industrial and Design Technologies:					
Computer Animation	13	8	8	9	8
Graphic Design/Computer Graphics	17	20	25	24	30
Drafting and Design Technology	14	9	12	7	10
Electrical Technology	0	5	4	6	7
Engineering Technology General	3	4	2	2	3
Engineering Technology Manufacturing	0	2	3	0	0
Science Technologies:					
Ornamental Horticulture	7	3	3	3	7
TOTAL A.A.S.	465	492	437	442	459

* Program has been discontinued.

** New Degree Program

*** Due to a title change in 2004, Criminal Justice is now Law Enforcement.

Source: SURE Graduate File

BERGEN COMMUNITY COLLEGE

Certificates Awarded

2008 - 2012

Programs	2008	2009	2010	2011	2012
Certificates					
Computer Aided Drafting Technology	2	8	5	5	4
Computer Science	3	0	0	0	0
Computer Technical Support	1	1	3	5	1
Culinary Arts	3	1	1	3	6
Database Programming and Administration	0	1	0	2	0
Event Planning and Management	-	-	-	1	1
Exercise Science	1	1	0	2	0
Grounds Management	0	0	1	0	1
Hospitality Management	3	5	2	1	1
Landscaping	0	1	2	0	0
Medical Office Administrative Assistant	3	3	1	3	10
Music Technology	0	1	0	0	1
Networking and Web Development	2	0	0	0	0
Office Technology	0	2	0	0	0
Piano Instruction/Pedagogy	-	-	-	1	1
Radiation Therapy Technology	10	4	4	9	4
Small Business Management	1	1	4	2	1
Surgical Technology	16	26	16	27	27
Transfer Studies: Science, Technology & Professional Studies	0	0	1	0	1
Travel Service	6	0	0	0	0
US Studies	-	-	-	2	0

Certificates of Achievement					
Accounting Assistant*	-	-	-	-	1
Biotechnology	0	1	0	0	0
Business Paraprofessional Management	0	0	1	0	0
Commercial Music Production	1	0	1	1	0
Finance	0	2	1	1	0
Floral Design	1	1	0	0	0
Machine Tooling	0	1	2	1	1
Manufacturing Design	2	1	3	4	3
Professional Cook	0	0	1	1	0
Quality Assurance	-	-	-	3	1
Sports Management*	-	-	-	-	2
TOTAL CERTIFICATES	55	61	49	74	67

*New certificate programs

Source: SURE Graduate File

Faculty Characteristics

Faculty Highlights

- ✚ The faculty of Bergen Community College includes 83 Professors, 93 Associate Professors, 95 Assistant Professors, 14 Instructors, 7 Associate Instructors, and 100 Lecturers, for a total of 392 full-time faculty members. A total of 691 Adjunct members completed the teaching faculty for Fall 2012.
- ✚ Eighty-three percent (83%) of all full-time faculty are tenured or on tenure track.

BERGEN COMMUNITY COLLEGE
Full-Time Faculty by Department, Rank and Gender
Fall 2012

Schools	Professor		Associate Professor		Assistant Professor		Instructor		Associate Instructor		Lecturer		Total		Faculty Total
	M	F	M	F	M	F	M	F	M	F	M	F	M	F	
<u>Arts, Humanities, and Wellness</u>															
Communication	1	1	5	1	0	4	0	0	0	0	2	3	8	9	17
History & Geography	3	0	2	0	1	2	0	0	0	0	0	0	6	2	8
World Languages & Cultures	0	1	0	0	0	3	0	1	0	0	0	2	0	7	7
Performing Arts	0	1	1	2	2	0	0	0	0	0	1	1	4	4	8
Philosophy & Religion	3	0	1	1	0	1	0	0	0	0	2	3	6	5	11
Visual Arts	2	0	1	4	1	0	0	0	0	0	0	2	4	6	10
Wellness & Exercise Science	5	2	1	0	0	1	0	0	0	0	0	0	6	3	9
SCHOOL TOTAL	14	5	11	8	4	11	0	1	0	0	5	11	34	36	70
<u>Business, Social Science, and Public Service</u>															
Business, Accounting, & Finance	2	2	2	1	2	2	0	0	0	0	1	3	7	8	15
Computer Informatics	0	1	0	0	1	0	0	0	0	0	0	1	1	2	3
Education	0	0	0	0	0	2	0	0	0	0	0	1	0	3	3
Hospitality & Restaurant Management	1	0	3	0	0	0	0	0	1	0	0	0	5	0	5
Information Technology	1	1	1	1	1	0	0	1	0	0	3	0	6	3	9
Legal & Related Studies	0	0	1	0	1	1	0	0	0	0	0	0	2	1	3
Public Service	0	0	2	0	2	1	0	1	0	0	1	0	5	2	7
Social Sciences	7	3	1	0	3	5	0	0	0	0	3	3	14	11	25
SCHOOL TOTAL	11	7	10	2	10	11	0	2	1	0	8	8	40	30	70
<u>English</u>															
American Language Program	3	1	2	5	0	4	0	1	0	0	0	5	5	16	21
ALP Speech	1	0	0	2	0	0	0	0	0	0	0	1	1	3	4
Composition & Literature	2	4	2	2	3	5	2	0	0	0	1	6	10	17	27
English Basic Skills	2	2	2	5	1	6	1	0	0	0	2	9	8	22	30
SCHOOL TOTAL	8	7	6	14	4	15	3	1	0	0	3	21	24	58	82
<u>Health Professions</u>															
Dental Hygiene	0	1	0	0	0	3	0	1	0	0	0	0	0	5	5
Diagnostic Medical Sonography	0	1	0	0	0	0	0	0	0	1	0	0	0	2	2
Medical Office Technology	0	0	1	0	0	0	0	0	0	1	0	0	1	1	2
Nursing	0	5	0	7	0	4	0	0	0	0	0	5	0	21	21
Radiation Therapy	0	0	0	0	0	1	0	0	0	0	1	0	1	1	2
Radiography	0	0	0	0	1	0	0	1	0	0	0	0	1	1	2
Respiratory Therapy	1	1	0	0	1	0	0	0	0	0	0	0	2	1	3
Surgical Technology	0	0	0	0	0	0	0	1	0	1	0	1	0	3	3
Veterinary Technology	0	0	0	1	0	1	0	0	0	1	0	0	0	3	3
SCHOOL TOTAL	1	8	1	8	2	9	0	3	0	4	1	6	5	38	43
<u>Math, Science, and Technology</u>															
Biology & Horticulture	6	2	3	2	2	2	0	0	0	0	4	3	15	9	24
College Mathematics	1	2	2	4	0	3	0	1	0	0	3	2	6	12	18
Developmental Mathematics	1	0	0	1	1	8	0	2	1	0	4	9	7	20	27
Industrial & Design Technology	1	0	0	0	1	0	0	0	1	0	1	1	4	1	5
Physical Science	2	3	5	0	3	1	0	1	0	0	1	0	11	5	16
SCHOOL TOTAL	11	7	10	7	7	14	0	4	2	0	13	15	43	47	90
Total Teaching Faculty	45	34	38	39	27	60	3	11	3	4	30	61	146	209	355
Library & Learning Resources Center	0	0	0	0	0	4	1	5	0	0	3	3	4	12	16
Total Instructional	45	34	38	39	27	64	4	16	3	4	33	64	150	221	371
Student Services	0	1	3	4	0	2	0	0	0	0	1	0	4	7	11
Counseling & Health Services	2	1	2	3	0	0	0	0	0	0	0	2	4	6	10
TOTAL	47	36	43	46	27	66	4	16	3	4	34	66	158	234	392

Note: Faculty on released time are included in the division of their primary academic affiliation.

Source: HR FACULTY 2012

BERGEN COMMUNITY COLLEGE
Full-Time Faculty by Race/Ethnicity and Gender
Fall 2012

Schools	White		Black		Hispanic		Asian		Am. Indian		Unknown		Faculty Total
	M	F	M	F	M	F	M	F	M	F	M	F	
<u>Arts, Humanities, and Wellness</u>													
Communication	6	7	1	1	0	0	0	1	0	0	1	0	17
History & Geography	2	1	0	0	1	0	2	0	1	0	0	1	8
World Languages & Cultures	0	3	0	0	0	2	0	1	0	0	0	1	7
Performing Arts	4	4	0	0	0	0	0	0	0	0	0	0	8
Philosophy & Religion	4	4	0	0	1	0	0	1	0	0	1	0	11
Visual Arts	4	5	0	0	0	0	0	1	0	0	0	0	10
Wellness & Exercise Science	6	3	0	0	0	0	0	0	0	0	0	0	9
SCHOOL TOTAL	26	27	1	1	2	2	2	4	1	0	2	2	70
<u>Business, Social Science, and Public Service</u>													
Business, Accounting, & Finance	5	5	2	1	0	0	0	1	0	0	0	1	15
Computer Informatics	0	2	0	0	0	0	1	0	0	0	0	0	3
Education	0	2	0	0	0	0	0	1	0	0	0	0	3
Hospitality & Restaurant Management	4	0	0	0	0	0	0	0	0	0	1	0	5
Information Technology	5	3	0	0	0	0	0	0	0	0	1	0	9
Legal & Related Studies	2	1	0	0	0	0	0	0	0	0	0	0	3
Public Service	5	1	0	0	0	0	0	0	0	0	0	1	7
Social Sciences	12	7	0	2	1	0	0	1	0	0	1	1	25
SCHOOL TOTAL	33	21	2	3	1	0	1	3	0	0	3	3	70
<u>English</u>													
American Language Program	4	10	0	1	0	3	1	2	0	0	0	0	21
ALP Speech	1	2	0	1	0	0	0	0	0	0	0	0	4
Composition & Literature	9	13	0	2	0	0	0	0	0	0	1	2	27
English Basic Skills	6	18	1	0	0	0	0	0	0	0	1	4	30
SCHOOL TOTAL	20	43	1	4	0	3	1	2	0	0	2	6	82
<u>Health Professions</u>													
Dental Hygiene	0	4	0	0	0	0	0	0	0	0	0	1	5
Medical Office Technology	1	1	0	0	0	0	0	0	0	0	0	0	2
Nursing	0	16	0	0	0	1	0	1	0	0	0	3	21
Radiography	1	1	0	0	0	0	0	0	0	0	0	0	2
Radiation Therapy	1	1	0	0	0	0	0	0	0	0	0	0	2
Respiratory Therapy	2	1	0	0	0	0	0	0	0	0	0	0	3
Diagnostic Medical Sonography	0	2	0	0	0	0	0	0	0	0	0	0	2
Surgical Technology	0	3	0	0	0	0	0	0	0	0	0	0	3
Veterinary Technology	0	3	0	0	0	0	0	0	0	0	0	0	3
SCHOOL TOTAL	5	32	0	0	0	1	0	1	0	0	0	4	43
<u>Math, Science, and Technology</u>													
Biology & Horticulture	14	6	0	1	1	0	0	0	0	0	0	2	24
College Mathematics	4	12	0	0	0	0	0	0	0	0	2	0	18
Developmental Mathematics	6	7	0	0	0	2	0	6	0	0	1	5	27
Industrial & Design Technology	3	0	0	0	0	1	0	0	0	0	1	0	5
Physical Science	9	4	1	0	0	0	0	1	0	0	1	0	16
SCHOOL TOTAL	36	29	1	1	1	3	0	7	0	0	5	7	90
Total Teaching Faculty	120	152	5	9	4	9	4	17	1	0	12	22	355
Library & Learning Resources Center	2	9	1	1	0	0	0	0	0	0	1	2	16
Total Instructional	122	161	6	10	4	9	4	17	1	0	13	24	371
Student Services	2	4	0	2	2	0	0	1	0	0	0	0	11
Counseling & Health Services	2	5	2	1	0	0	0	0	0	0	0	0	10
TOTAL	126	170	8	13	6	9	4	18	1	0	13	24	392

Note: Faculty on released time are included in the division of their primary academic affiliation.

Source: HR FACULTY 2012

BERGEN COMMUNITY COLLEGE

Full-Time Faculty by Tenure Status

Fall 2012

Schools	Tenured	Non-Tenured	Tenure Unavailable	Faculty Total
<u>Arts, Humanities, and Wellness</u>				
Communication	7	5	5	17
History & Geography	5	3	0	8
World Languages & Cultures	2	3	2	7
Performing Arts	4	2	2	8
Philosophy & Religion	5	1	5	11
Visual Arts	6	1	3	10
Wellness & Exercise Science	8	1	0	9
SCHOOL TOTAL	37	16	17	70
<u>Business, Social Science, and Public Service</u>				
Business, Accounting, & Finance	9	2	4	15
Computer Informatics	1	1	1	3
Education	0	2	1	3
Hospitality & Restaurant Management	4	0	1	5
Information Technology	5	1	3	9
Legal & Related Studies	1	2	0	3
Public Service	3	2	2	7
Social Sciences	13	6	6	25
SCHOOL TOTAL	36	16	18	70
<u>English</u>				
American Language Program	14	1	6	21
ALP Speech	3	0	1	4
Composition & Literature	14	6	7	27
English Basic Skills	12	7	11	30
SCHOOL TOTAL	43	14	25	82
<u>Health Professions</u>				
Dental Hygiene	3	1	1	5
Medical Office Technology	1	1	0	2
Nursing	15	1	5	21
Radiography	1	1	0	2
Radiation Therapy	1	0	1	2
Respiratory Therapy	2	1	0	3
Diagnostic Medical Sonography	2	0	0	2
Surgical Technology	1	1	1	3
Veterinary Technology	3	0	0	3
SCHOOL TOTAL	29	6	8	43
<u>Math, Science, and Technology</u>				
Biology & Horticulture	14	3	7	24
College Mathematics	12	1	5	18
Developmental Mathematics	5	8	14	27
Industrial & Design Technology	1	2	2	5
Physical Science	11	4	1	16
SCHOOL TOTAL	43	18	29	90
Total Teaching Faculty	188	70	97	355
Library & Learning Resources Center	7	2	7	16
Total Instructional Faculty	195	72	104	371
Student Services	10	0	1	11
Counseling & Health Services	8	0	2	10
TOTAL	213	72	107	392

Note: Faculty on released time are included in the division of their primary academic affiliation.

Tenure is not available to lecturers, instructors, or associate instructors.

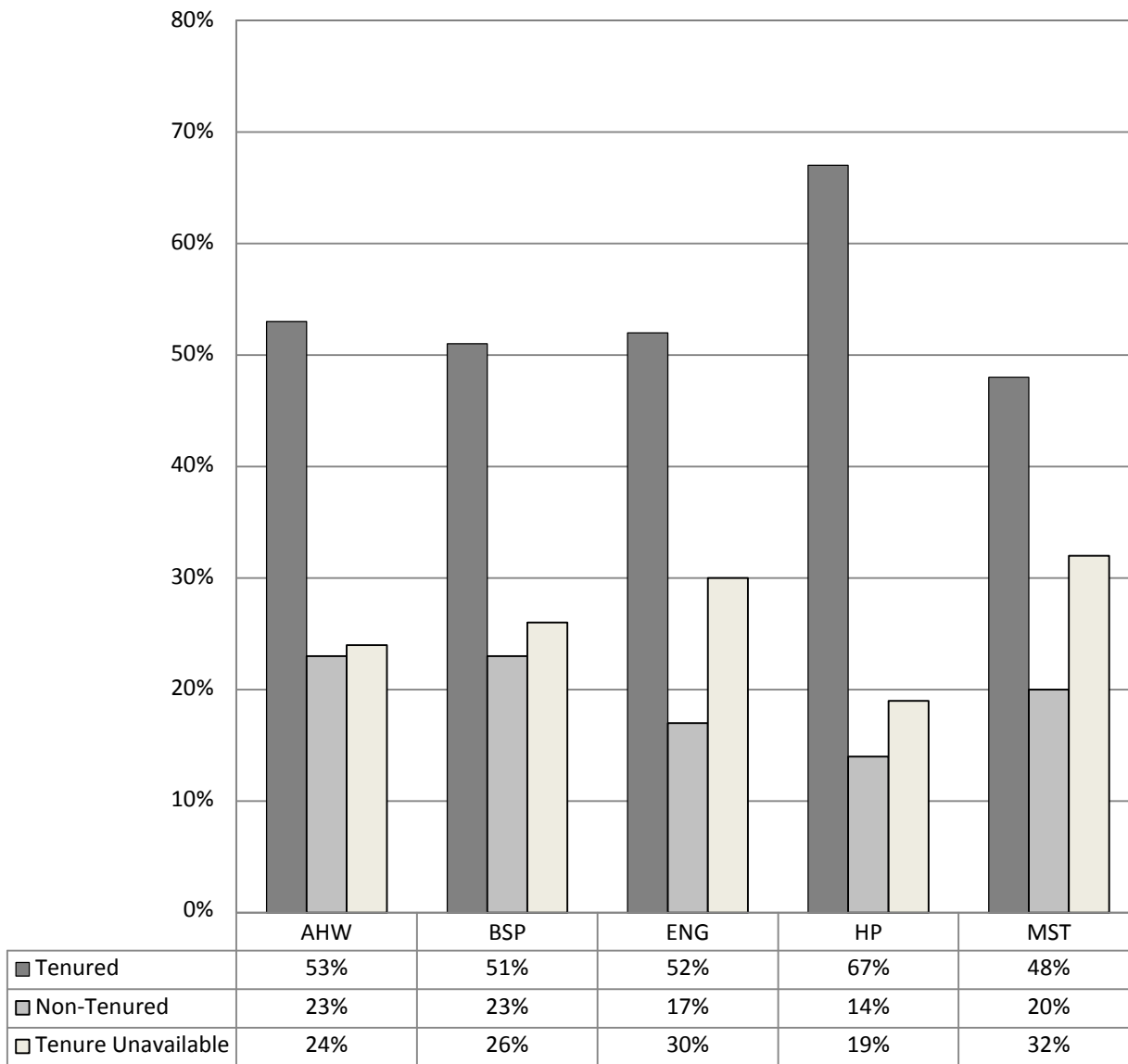
Source: HR FACULTY 2012

BERGEN COMMUNITY COLLEGE

Full-Time Faculty by Tenure

(represented as percent)

Fall 2012



BSP: School of Business, Math, & Social Sciences

ENG: School of English

MST: School of Mathematics, Science, & Technology

HP: School of Health Professions

BERGEN COMMUNITY COLLEGE
Adjunct Faculty
Gender, Race/Ethnicity, and Total by Department
Fall 2012

Adjunct Faculty: Gender and Race/Ethnicity

Race	Male	Female	Total
American Indian	0	2	2
Asian	12	21	33
Black	13	10	23
Hawaiian/Pacific Islander	0	0	0
Hispanic	21	26	47
White	227	229	456
Unknown	64	66	130
TOTAL*	337	354	691

Source: IPEDS Human Resources Report

Adjunct Faculty by Department Affiliation

Department	Male	Female	Total
Accounting	10	1	11
American Language Program	5	22	27
ALP Speech	1	4	5
Biology & Horticulture	28	18	46
Business & Finance	9	4	13
Computer Informatics	4	3	7
Composition & Literature	19	21	40
College Mathematics	7	2	9
Communications	11	8	19
Dental Hygiene	9	15	24
Developmental Mathematics	19	10	29
English Basic Skills	11	23	34
Education	1	6	7
History & Geography	26	4	30
Hotel/Restaurant Management	2	1	3
Industrial Design	9	1	10
Information Technology	7	4	11
Language Arts	17	32	49
Medical Office Assistant	1	4	5
Nursing	1	14	15
Performing Arts	19	11	30
Philosophy & Religion	10	4	14
Physical Science	22	6	28
Public Service	11	2	13
Radiography	11	19	30
Radiation Therapy	7	3	10
Respiratory Technology	10	29	39
Science	0	1	1
Social Sciences	26	30	56
Sonography / DMS	1	8	9
Surgical Technology	3	16	19
Veterinary Technology	0	8	8
Visual Arts	16	14	30
Wellness & Exercise	4	6	10
All Departments*	337	354	691

*As of March 1, 2013

Financial Data

Financial Data Highlights

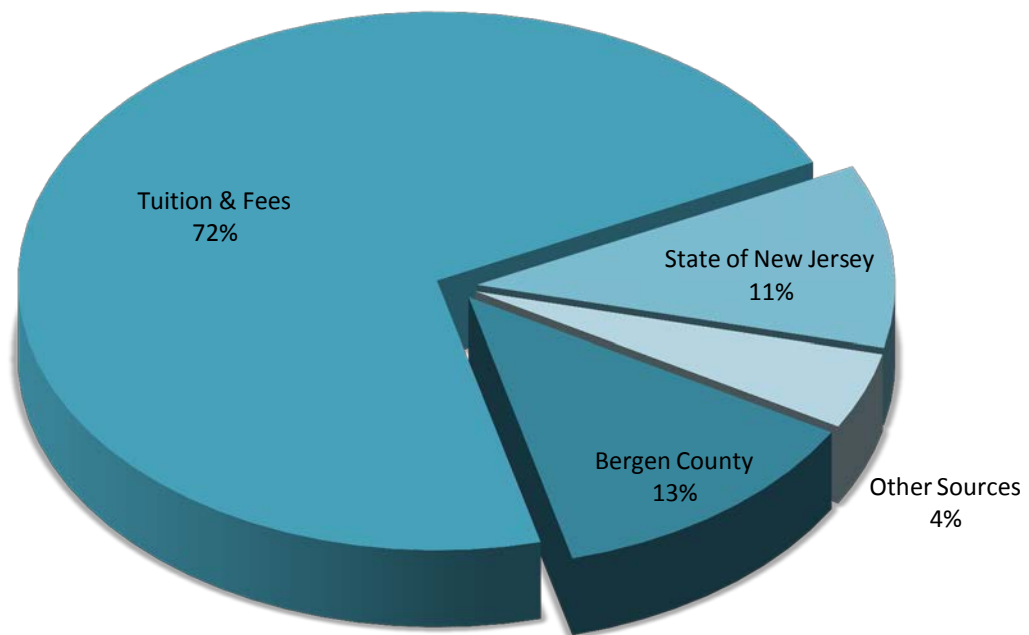
- Total budgeted revenue increased by 11% from FY 2012 to FY 2013. Sources of revenue were as followed:
 - State of New Jersey: 8.2%
 - Bergen County: 9.6%
 - Student Aid and Grants: 24.8%
 - Tuition and Fees: 53.9%
 - Other: 3.5%
- Total budgeted unrestricted expenditures increased by 2% from FY 2012 to FY 2013. About 89% of the total budget expenditures were allocated to the areas of instruction, academic support, institutional support, and student services.

BERGEN COMMUNITY COLLEGE**Current Funds Budgeted, Revenues****Fiscal Years 2012 and 2013**

REVENUES	Budgeted 7/1/11- 6/30/12	Percent of Total	Budgeted 7/1/12- 6/30/13	Percent of Total
Unrestricted:				
Tuition	58,059,920	53.6%	59,914,430	54.0%
Student Fees	17,734,450	16.4%	19,703,930	17.8%
Government Appropriations:				
State	12,065,190	11.1%	12,163,630	11.0%
County	14,139,870	13.0%	14,139,870	12.7%
Other New Jersey Counties	170,000	0.2%	170,000	0.2%
Sales & Services, Auxiliary Enterprise	209,810	0.2%	209,810	0.2%
Other Sources	1,515,370	1.4%	1,604,350	1.4%
Fund Balance Appropriation	4,504,190	4.2%	3,100,000	2.8%
TOTAL UNRESTRICTED	108,398,800	100.0%	111,006,020	100.0%
Restricted:				
Student Aid and Other Grants	23,400,000		36,641,000	
TOTAL CURRENT FUNDS REVENUES	131,798,800		147,647,020	

Source: Bergen Community College Office of Budget and Finance

BERGEN COMMUNITY COLLEGE
Current Unrestricted Funds Budgeted,
Revenues Fiscal Year 2013



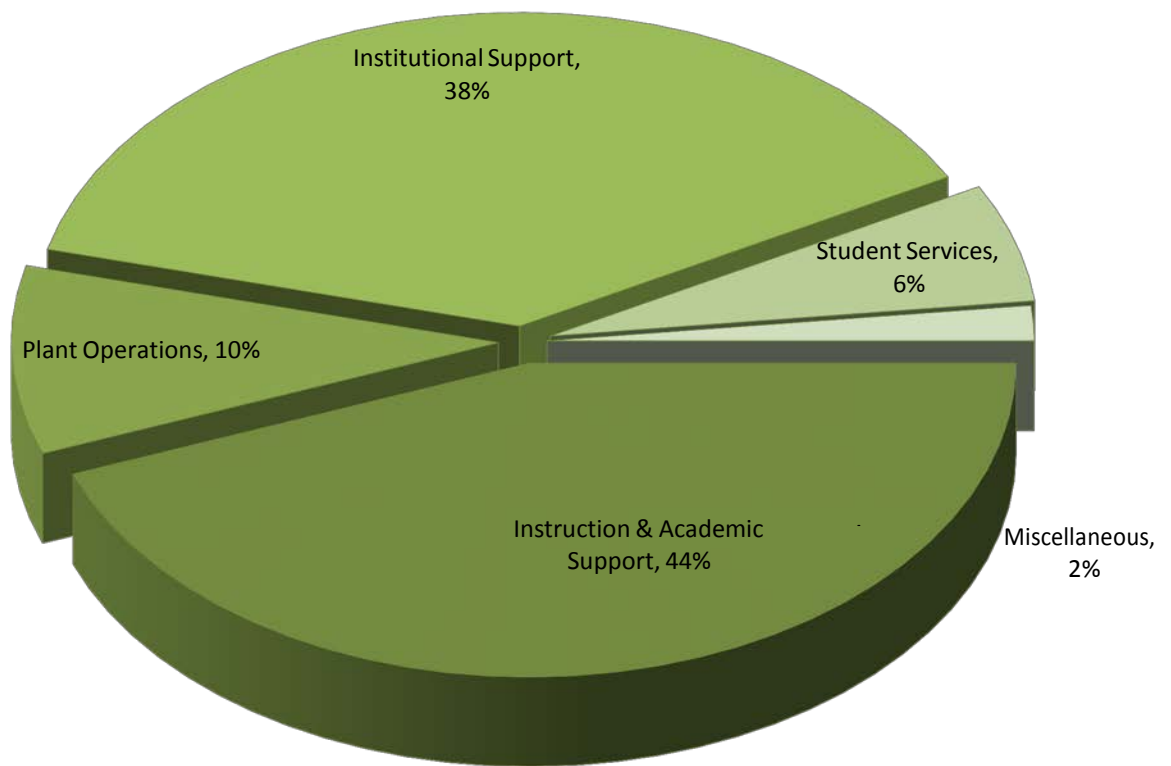
Source: Bergen Community College Office of Budget and Finance

BERGEN COMMUNITY COLLEGE
Current Funds Budgeted, Expenditures
Fiscal Years 2012 and 2013

EXPENDITURES & TRANSFERS	Budgeted 7/1/11-6/30/12	Percent of Total	Budgeted 7/1/12-6/30/13	Percent of Total
Educational and General:				
Instruction	41,451,830	38.2%	42,974,390	38.7%
Academic Support	6,008,160	5.5%	6,197,740	5.6%
Student Services	6,874,290	6.3%	6,791,390	6.1%
Institutional Support	41,332,350	38.1%	42,365,900	38.2%
Operation & Maintenance of Plant	10,639,300	9.8%	10,781,410	9.7%
Scholarships and Fellowships	700,000	0.6%	500,000	0.5%
EDUC. & GENERAL EXPENDITURE	107,005,930	98.7%	109,610,830	98.7%
Mandatory Transfers:				
Principal & Interest	1,097,030	1.0%	1,095,170	1.0%
TOTAL EDUCATIONAL & GENERAL	108,102,960	99.7%	110,706,000	99.7%
Auxiliary Enterprise:				
Expenditures	295,840	0.3%	300,020	0.3%
TOTAL CURRENT UNRESTRICTED	108,398,800	100.0%	111,006,020	100.0%
Restricted Expenditures:				
Student Aid and Other grants	23,400,000		36,641,000	
TOTAL CURRENT FUNDS EXPENDITURES & TRANSFERS	131,798,800		147,647,020	

Source: Bergen Community College Office of Budget and Finance

BERGEN COMMUNITY COLLEGE
Current Unrestricted Funds Budgeted, Expenditures
Fiscal Year 2013



Source: Bergen Community College Office of Budget and Finance

BERGEN COMMUNITY COLLEGE
Student Financial Aid
Recipients and Award Amounts
Fiscal Year 2012

	New Jersey Residents				Non-Resident Students		Total Students	
	Full-Time Students		Part-Time Students					
	Number*	Amount(\$)**	Number*	Amount(\$)**	Number*	Amount(\$)**	Number*	Amount(\$)**
Federal Programs								
Pell Grant	5,276	20,489,000	1,667	3,003,000	63	182,000	7,006	23,674,000
College Work Study	286	408,000	21	25,000	2	3,000	309	436,000
SEOG	1,665	255,000	406	47,000	7	1,000	2,078	303,000
Stafford Loans-Subsidized	1,494	4,538,000	490	1,396,000	41	134,000	2,025	6,068,000
Stafford Loans-Unsubsidized	1,308	3,639,000	476	1,538,000	38	93,000	1,822	5,270,000
PLUS Loans	55	247,000	9	38,000	1	7,000	65	292,000
SMART & ACG or Other	-	-	-	-	-	-	-	-
State Programs								
Tuition Aid Grant (TAG)^	2,663	4,766,000	439	357,000	-	-	3,102	5,123,000
Educational Opportunity Fund	370	338,000	23	10,000	-	-	393	348,000
Distinguished Scholars	2	1,000	-	-	-	-	2	1,000
Urban Scholars	3	1,000	-	-	-	-	3	1,000
New Jersey Class Loans	16	93,000	1	2,000	-	-	17	95,000
NJSTARS	133	408,000	5	7,000	-	-	138	415,000
Institutional Funds	94	99,000	29	35,000	0	0	123	134,000
Total Aid (amounts)	6,373	35,282,000		6,458,000	85	420,000	17,083	42,160,000

* Not an unduplicated count. Many students request and receive more than one kind of financial aid.

** Dollar amounts rounded to nearest thousand.

^ Part-time TAG amount includes funds available to part-time EOF students as well as to other part-time students.

Source: IPEDS Student Financial Aid Report, BCC Office of Financial Aid