

Summer Intensive Program Data Brief

March 2016

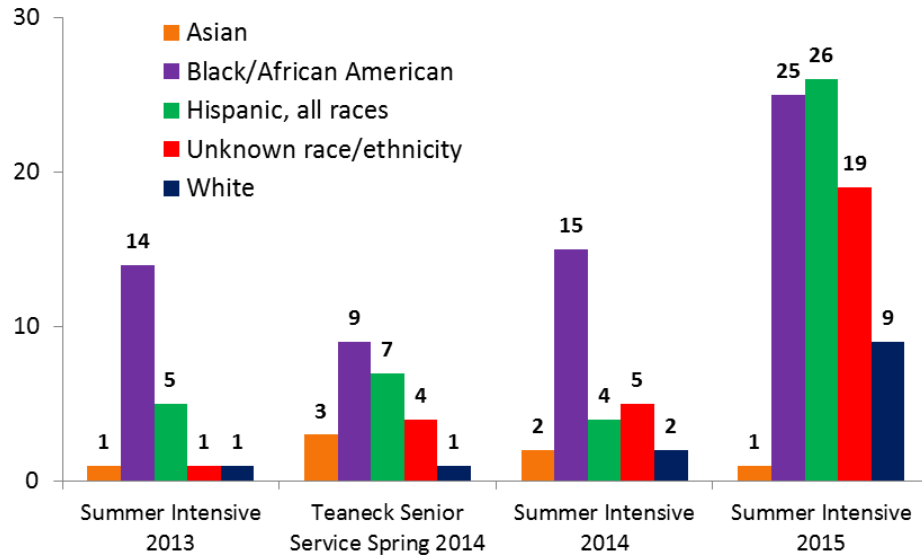
Introduction

The Summer Intensive Program Data Brief is a comprehensive look at the four cohorts of the Summer Intensive/Teaneck Senior Service Program dating back to the program's launch in Summer 2013. Demographic information presented in this report include Race/Ethnicity, Gender, County, High School, and the age of the students at the beginning of their respective programs (for example, how old the Summer Intensive 2013 students were in July 2013, how old the Summer Intensive 2014 students were in July 2014, etc.). Educational information presented in this report include accumulated credits, accumulated degree credits, overall GPA, degree GPA, and retention at BCC. The data in this report are as of the Spring 2016 semester and disaggregated by the following four cohorts of students:

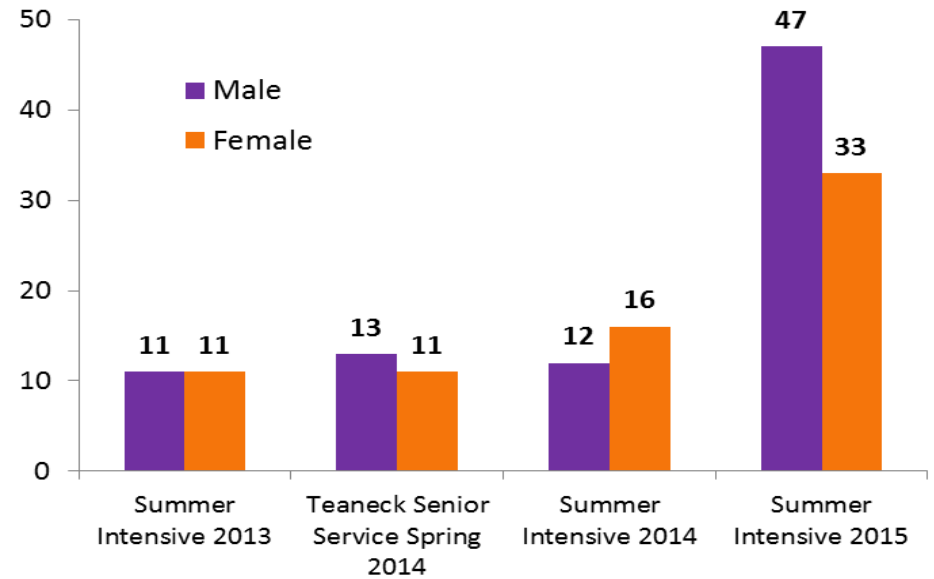
- Summer Intensive 2013 (N=22)
- Teaneck Senior Service Spring 2014 (N=24)
- Summer Intensive 2014 (N=28)
- Summer Intensive 2015 (N=80)

Demographic Information for Summer Intensive/Teaneck Senior Service Students

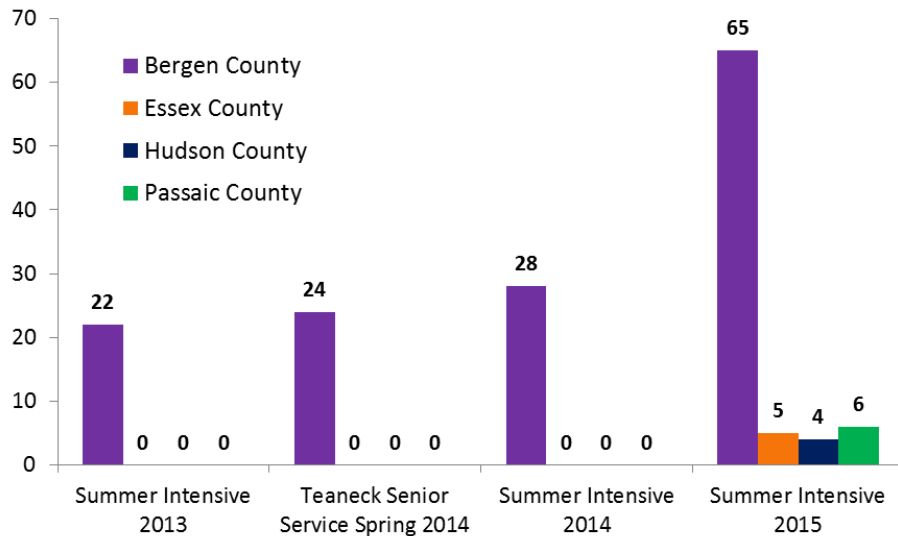
Race/Ethnicity



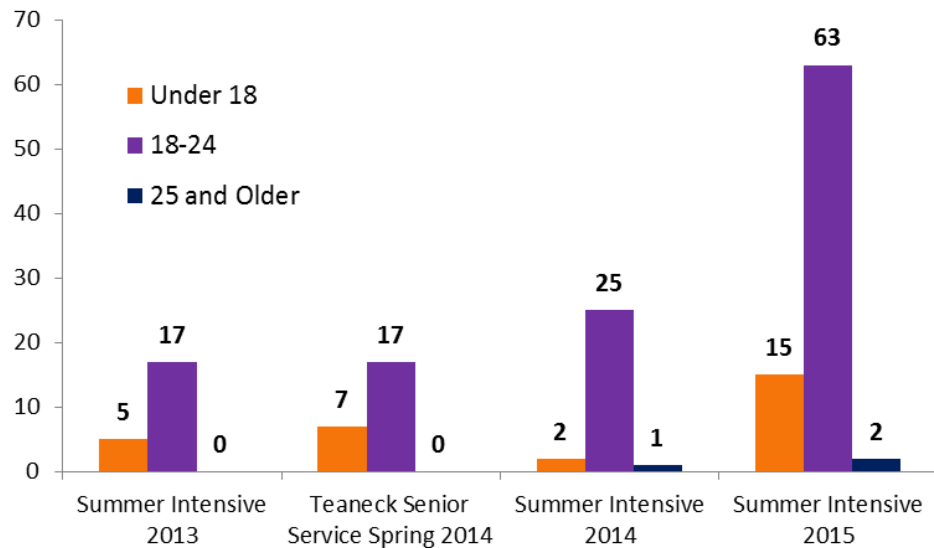
Gender



County

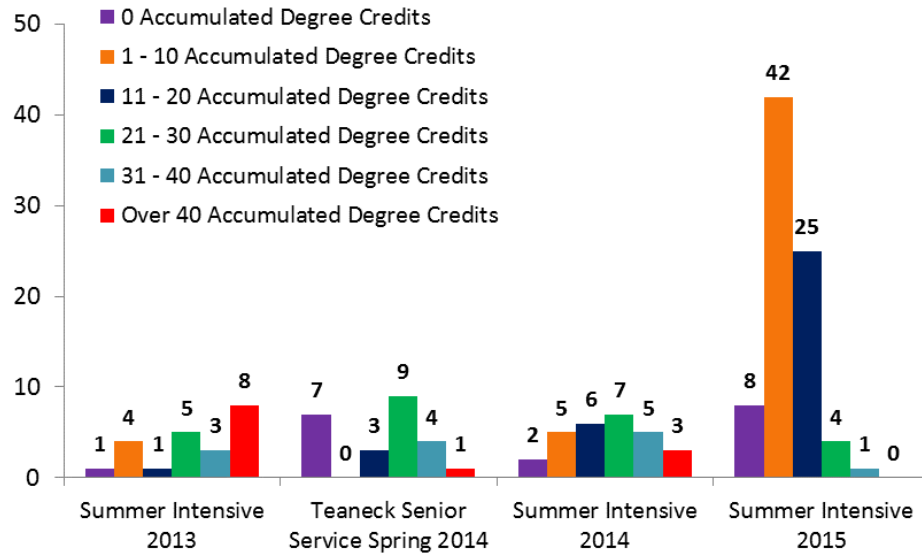


Age at Start of Program

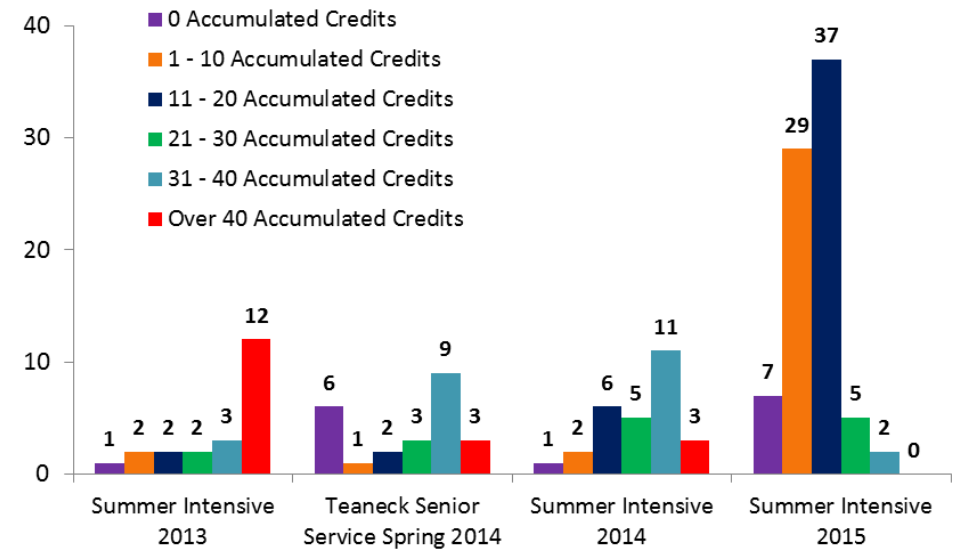


Credit and GPA Information for Summer Intensive/Teaneck Senior Service Students

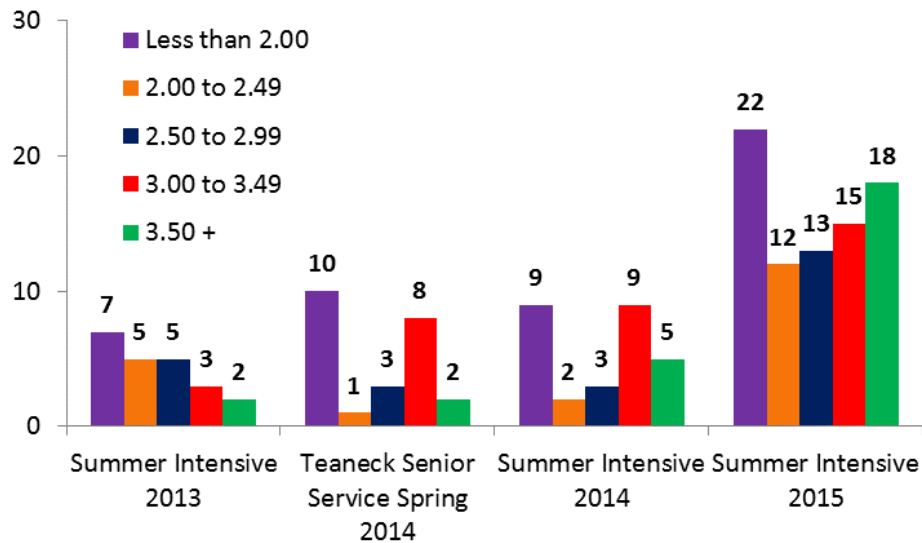
Accumulated Degree Credits as of SP16



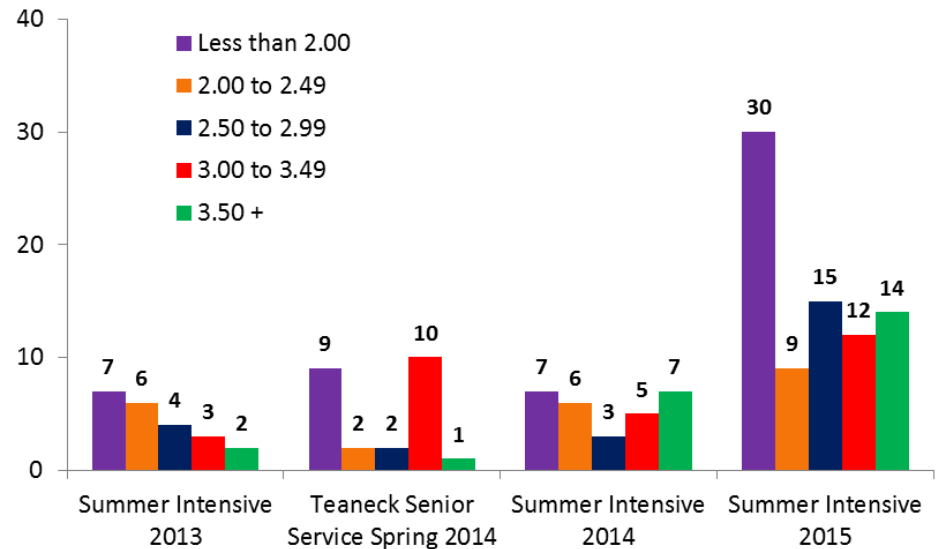
All Accumulated Credits as of SP16



Degree GPA as of SP16



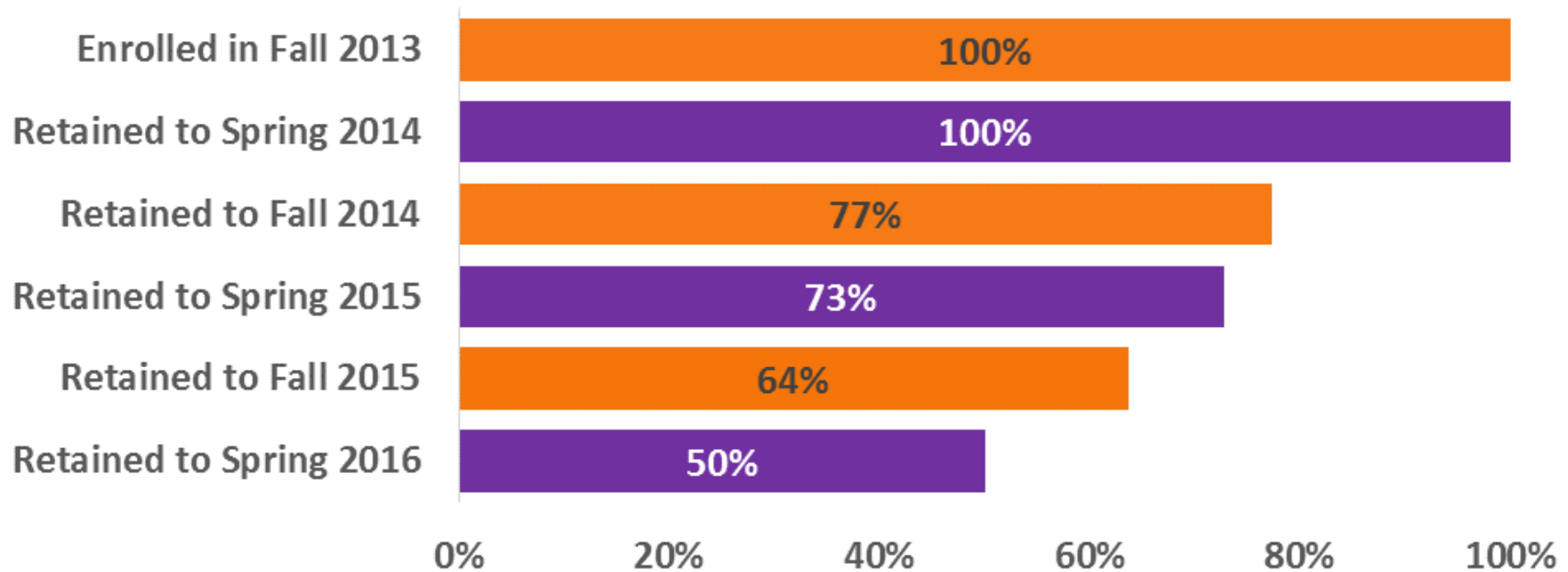
Overall GPA as of SP16



Summer Intensive 2013 Students' Retention at Bergen Community College

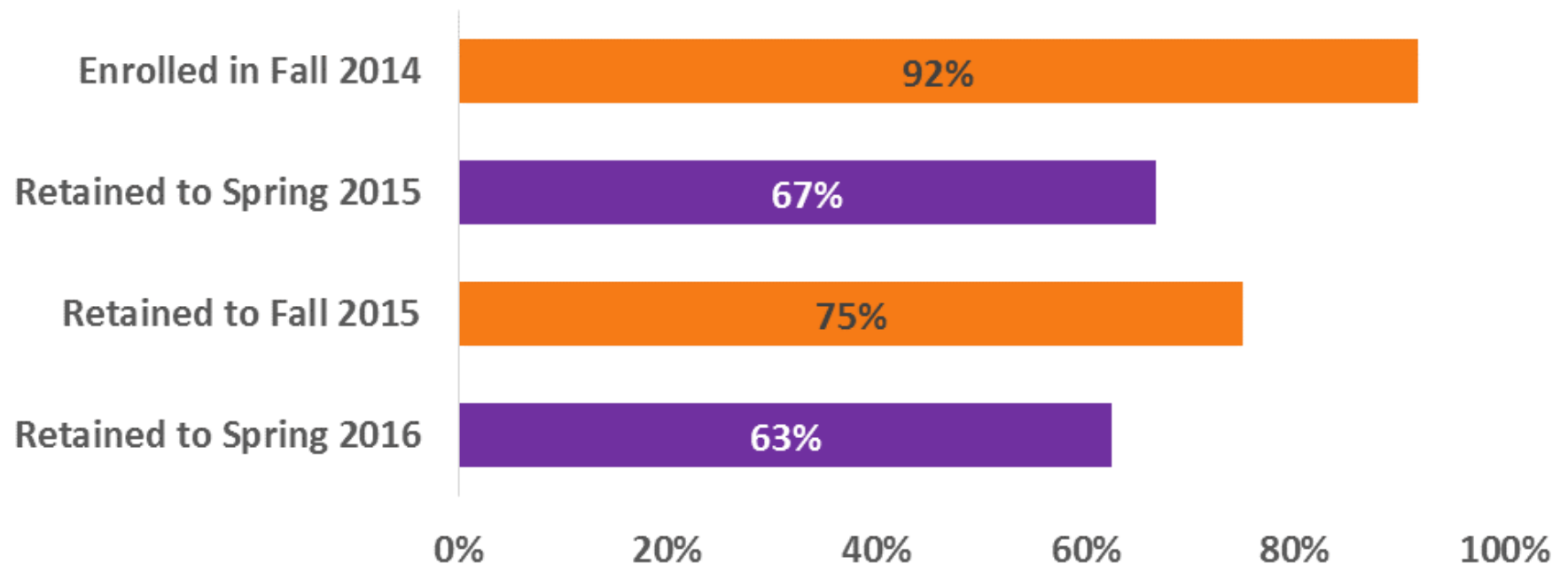
Initial Summer Intensive 2013 Cohort	Enrolled in Fall 2013		Retained to Spring 2014		Retained to Fall 2014	
	Retained #	Retained %	Retained #	Retained %	Retained #	Retained %
22	22	100%	22	100%	17	77%

Retained to Spring 2015		Retained to Fall 2015		Retained to Spring 2016	
Retained #	Retained %	Retained #	Retained %	Retained #	Retained %
16	73%	14	64%	11	50%



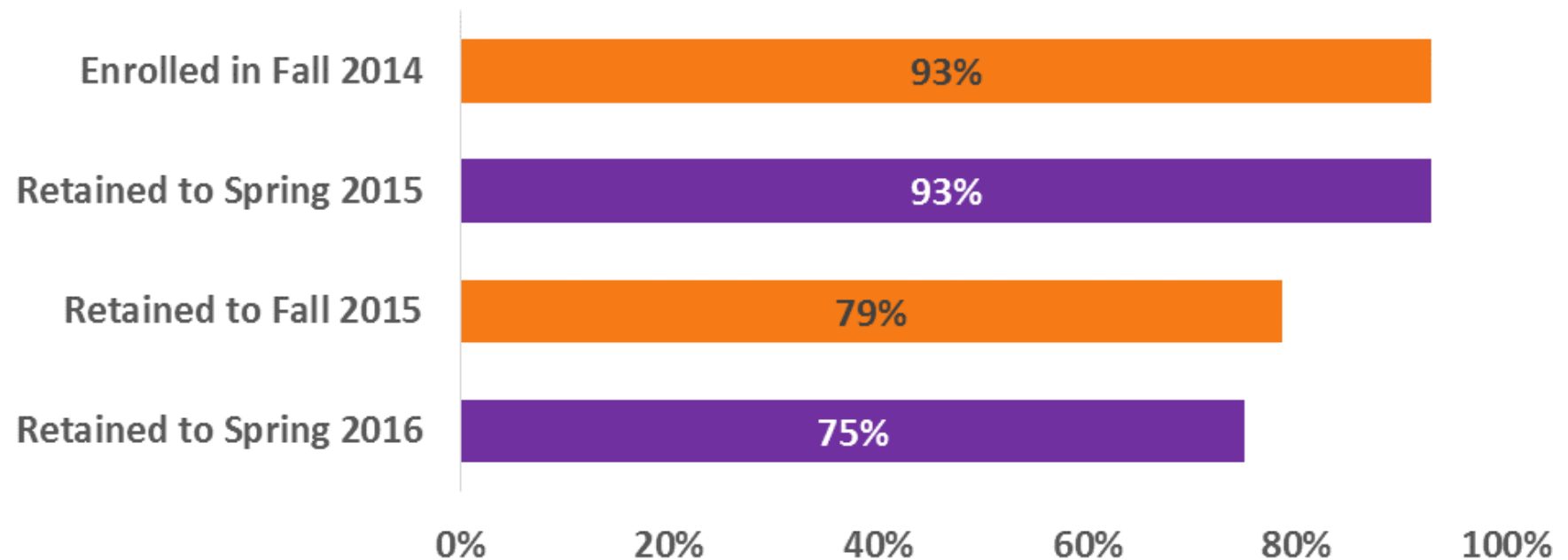
Teaneck Senior Service Spring 2014 Students' Retention at Bergen Community College

Initial Teaneck Senior Service Spring 2014 Cohort	Enrolled in Fall 2014		Retained to Spring 2015		Retained to Fall 2015		Retained to Spring 2016	
	Retained #	Retained %	Retained #	Retained %	Retained #	Retained %	Retained #	Retained %
24	22	92%	16	67%	18	75%	15	63%



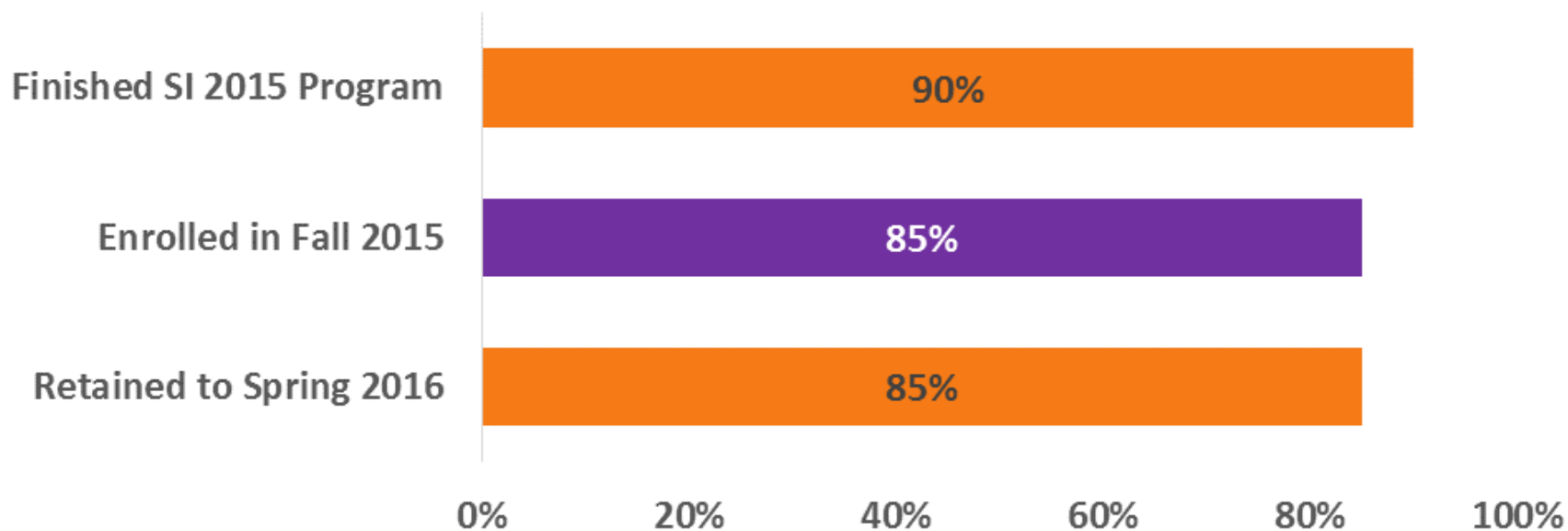
Summer Intensive 2014 Students' Retention at Bergen Community College

Initial Summer Intensive 2014 Cohort	Enrolled in Fall 2014		Retained to Spring 2015		Retained to Fall 2015		Retained to Spring 2016	
	Retained #	Retained %	Retained #	Retained %	Retained #	Retained %	Retained #	Retained %
28	26	93%	26	93%	22	79%	21	75%



Summer Intensive 2015 Students' Retention at Bergen Community College

Initial Summer Intensive 2015 Cohort	Finished SI 2015 Program		Enrolled in Fall 2015		Retained to Spring 2016	
	Retained #	Retained %	Retained #	Retained %	Retained #	Retained %
80	72	90%	68	85%	68	85%



High Schools for Summer Intensive/Teaneck Senior Service Students

Summer Intensive 2013		
High School Name	#	%
Teaneck High School	16	73%
Hackensack High School	3	14%
Academies at Englewood	1	5%
Dwight Morrow High School	1	5%
Garfield High School	1	5%
Total	22	100%

Teaneck Senior Service Spring 2014		
High School Name	#	%
Teaneck High School	24	100%

Summer Intensive 2014		
High School Name	#	%
Teaneck High School	10	36%
Dwight Morrow High School	4	14%
Hackensack High School	5	18%
Academies at Englewood	2	7%
Bergenfield High School	2	7%
Garfield High School	2	7%
Foreign High School	1	4%
International Arts and Business High School	1	4%
Memorial Senior High School	1	4%
Total	28	100%

Summer Intensive 2015		
High School Name	#	%
Teaneck High School	17	21%
Dwight Morrow High School	10	13%
Hackensack High School	6	8%
Garfield High School	4	5%
Passaic County Technical Institute	4	5%
Academies at Englewood	3	4%
Bergenfield High School	3	4%
Bloomfield High School	2	3%
Emerson High School	2	3%
Memorial Senior High School	2	3%
New Milford High School	2	3%
Northern Highlands Regional High School	2	3%
Ridgefield Park High School	2	3%
Belleville High School	1	1%
Foreign High School	1	1%
Fort Lee High School	1	1%
GED	1	1%
High Tech High School	1	1%
James J. Ferris High School	1	1%
Lodi High School	1	1%
Mahwah High School	1	1%
North Bergen High School	1	1%
Nutley High School	1	1%
Palisades Park High School	1	1%
Pascack Valley High School	1	1%
Ramapo High School	1	1%
Rutherford High School	1	1%
School 55 Ashgabat	1	1%
STARS Academy	1	1%
Union Hills High School	1	1%
Unknown/Closed High School	1	1%
West Milford High School	1	1%
Westwood High School	1	1%
Windsor Prep High School	1	1%
Total	80	100%