



Organizational Charts
February 6, 2019

BERGEN COMMUNITY COLLEGE

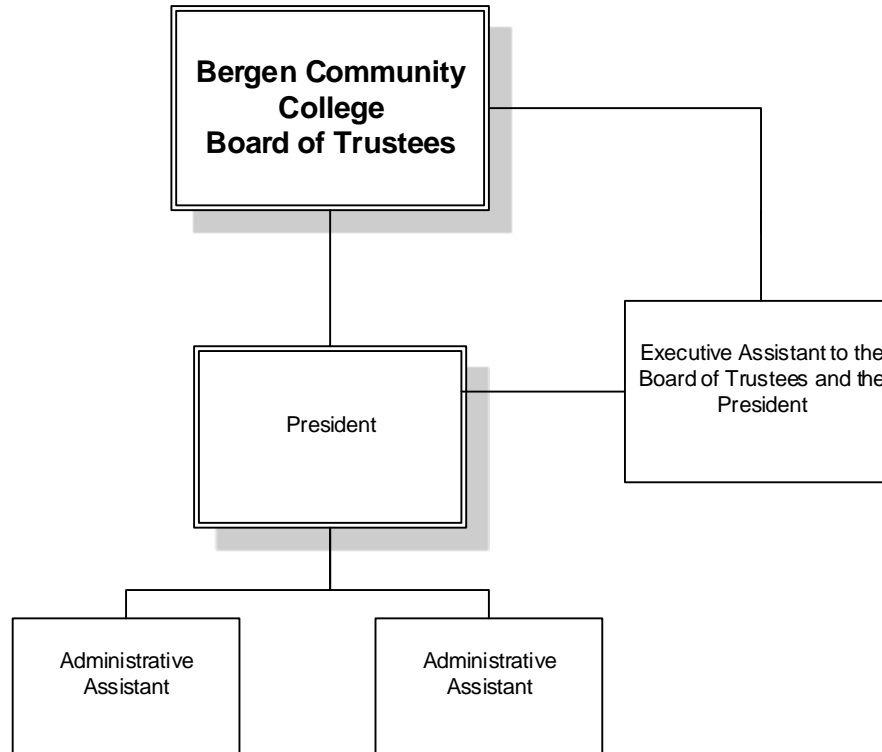
Organizational Charts

Table of Contents

Board of Trustees/President's Office.....	Page 1
Direct Reports to the President.....	Page 2
Academic Affairs.....	Page 3
Adjunct Administration.....	Page 8
Business, Arts and Social Sciences	Page 5
Career and Transfer Services and Counseling Center	Page 11
Center for Innovation in Teaching and Learning.....	Page 12
Cerullo Learning Assistance Center.....	Page 13
Child Development Center.....	Page 14
Health Professions.....	Page 6
Humanities	Page 4
Math, Science, and Technology	Page 7
Off-Campus Sites	Page 15
Sidney Silverman Library.....	Page 9
Student Support Services.....	Page 10
Bergen Community College Foundation.....	Page 16
Continuing Education and Workforce Development	Page 17
Finance.....	Page 19
Purchasing and Services.....	Page 20
Financial Aid.....	Page 21
Human Resources and Event Planning	Page 22
Grants Administration.....	Page 23
Institutional Effectiveness.....	Page 24
Information Technologies.....	Page 25
Media Technologies.....	Page 26
Facilities Planning, Operations and Public Safety.....	Page 27
Physical Plant.....	Page 28
Public Relations and Community & Cultural Affairs	Page 18
Student Affairs.....	Page 29
Enrollment Services.....	Page 30
Student Life and Conduct.....	Page 31

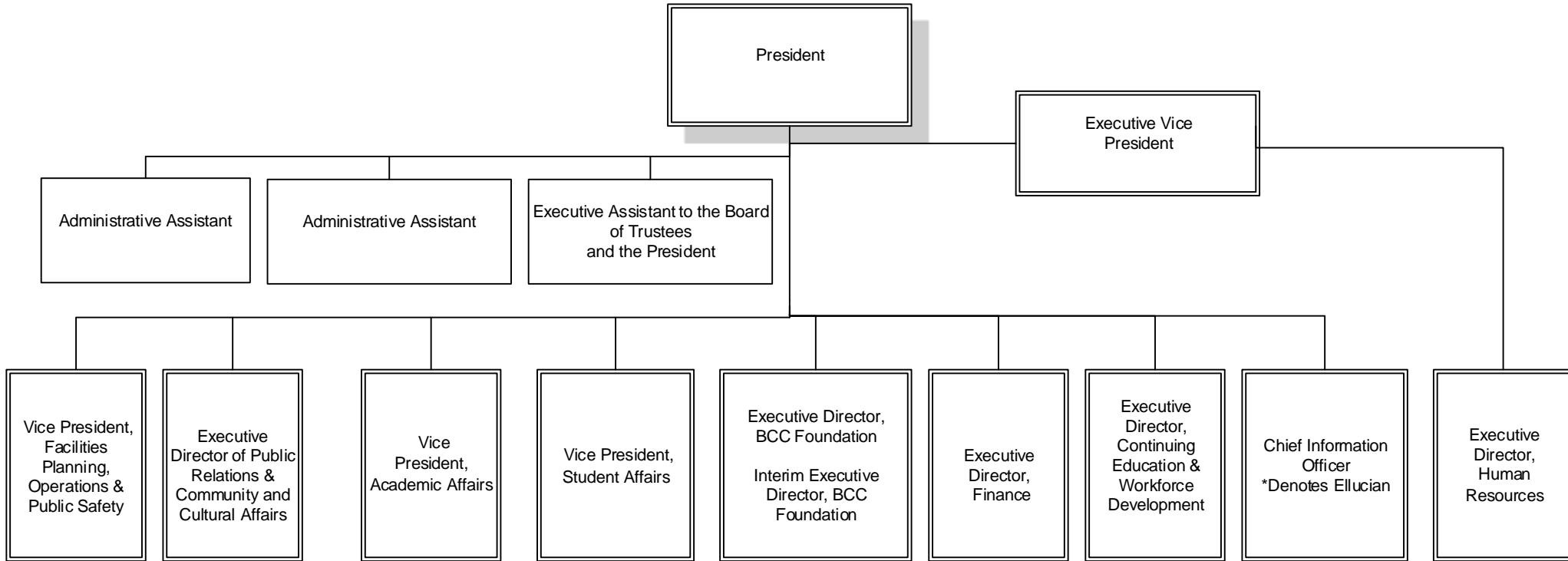
NOTE: VACANT (A) positions are actively recruiting, and VACANT are budgeted open positions which have not started the recruiting process.

BERGEN COMMUNITY COLLEGE
BOARD OF TRUSTEES/PRESIDENT'S OFFICE



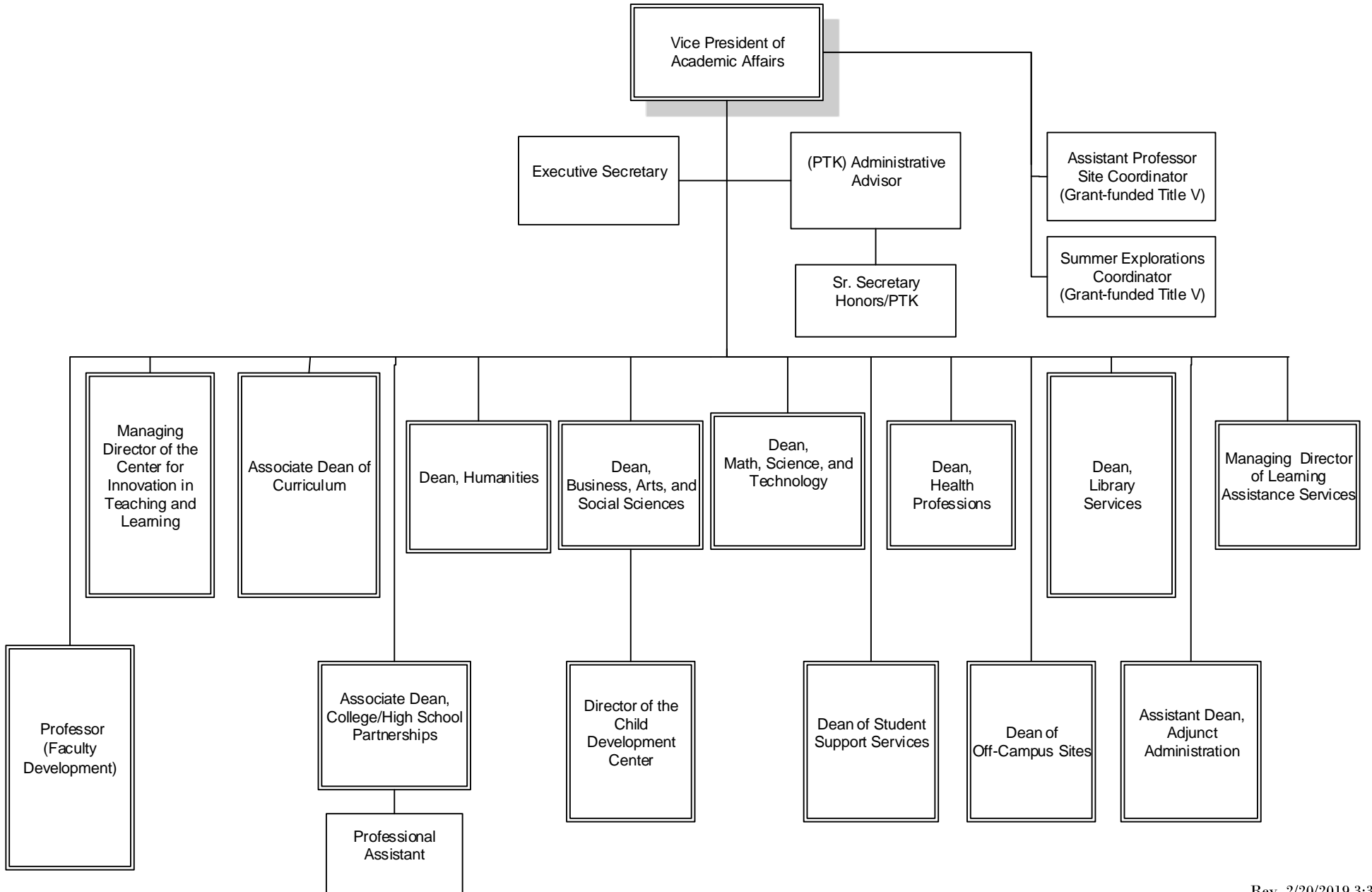
BERGEN COMMUNITY COLLEGE

DIRECT REPORTS TO THE PRESIDENT



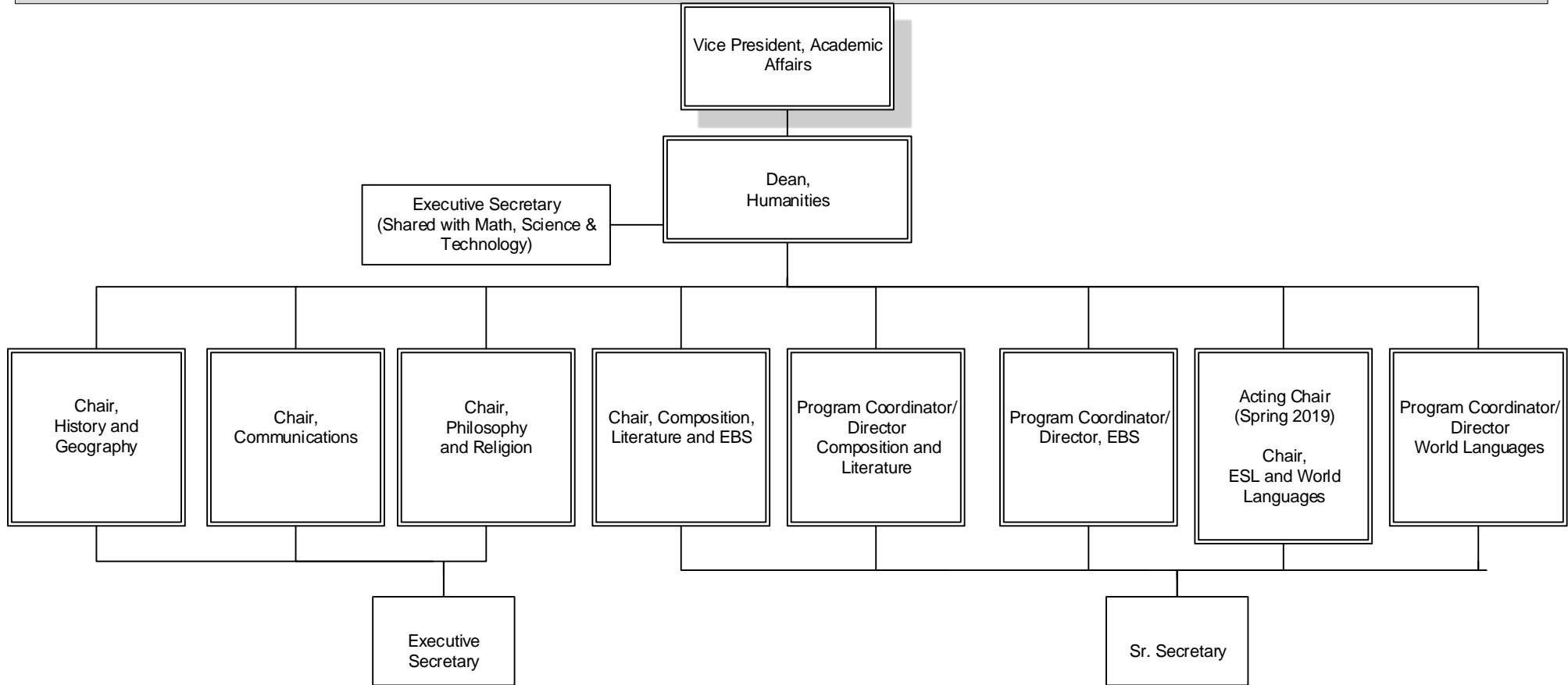
BERGEN COMMUNITY COLLEGE

ACADEMIC AFFAIRS



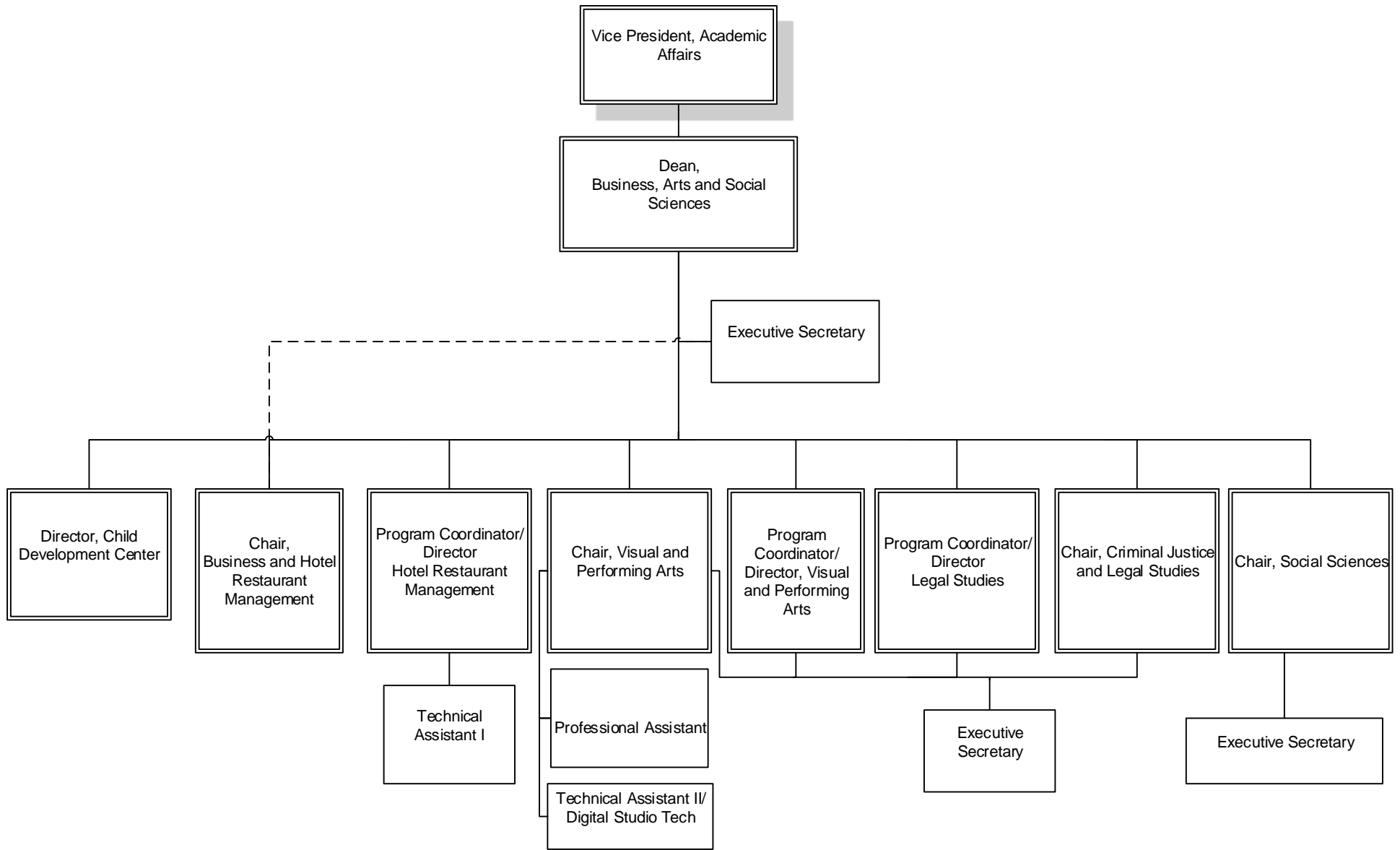
BERGEN COMMUNITY COLLEGE

HUMANITIES



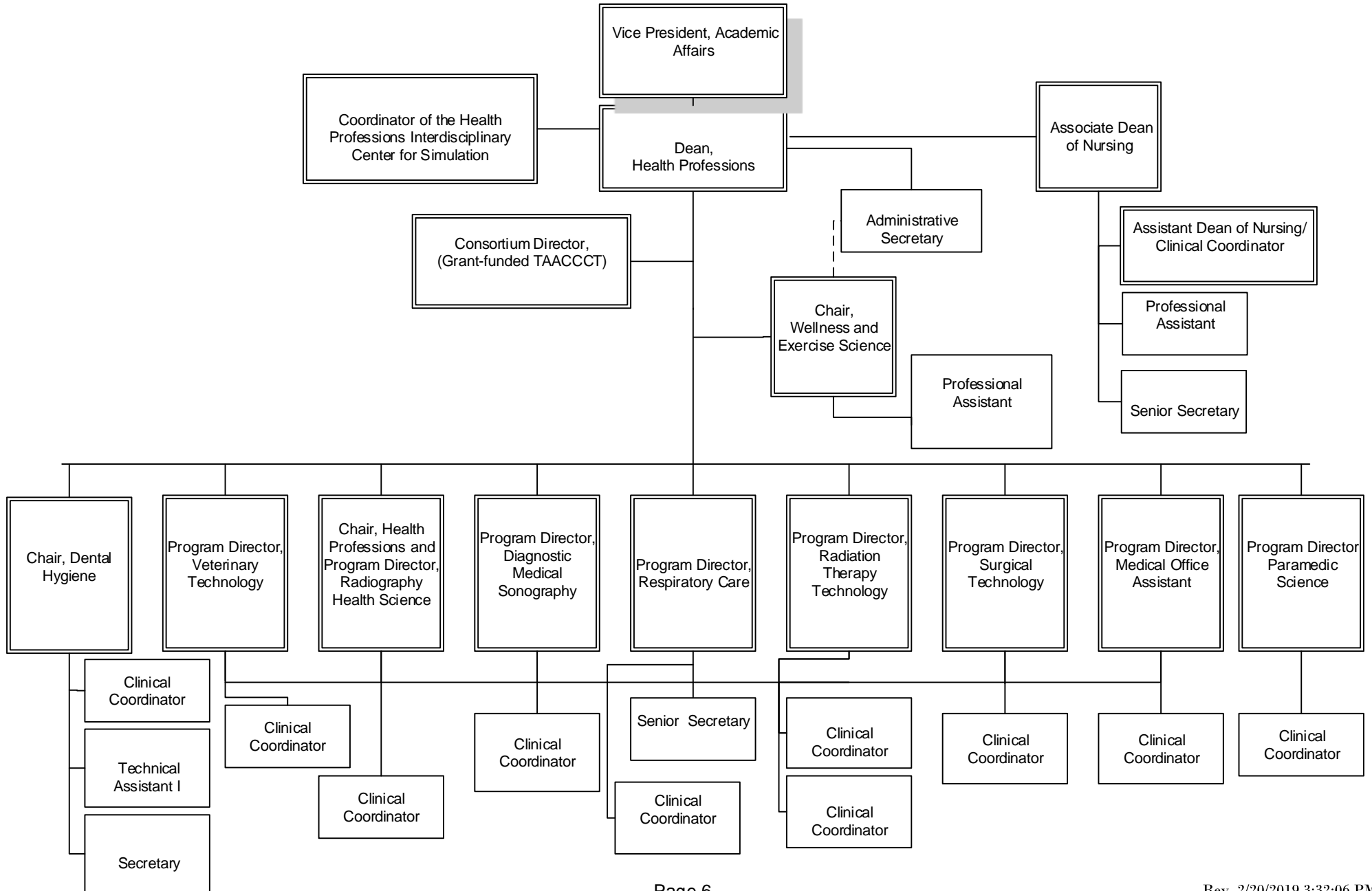
BERGEN COMMUNITY COLLEGE

BUSINESS, ARTS AND SOCIAL SCIENCES



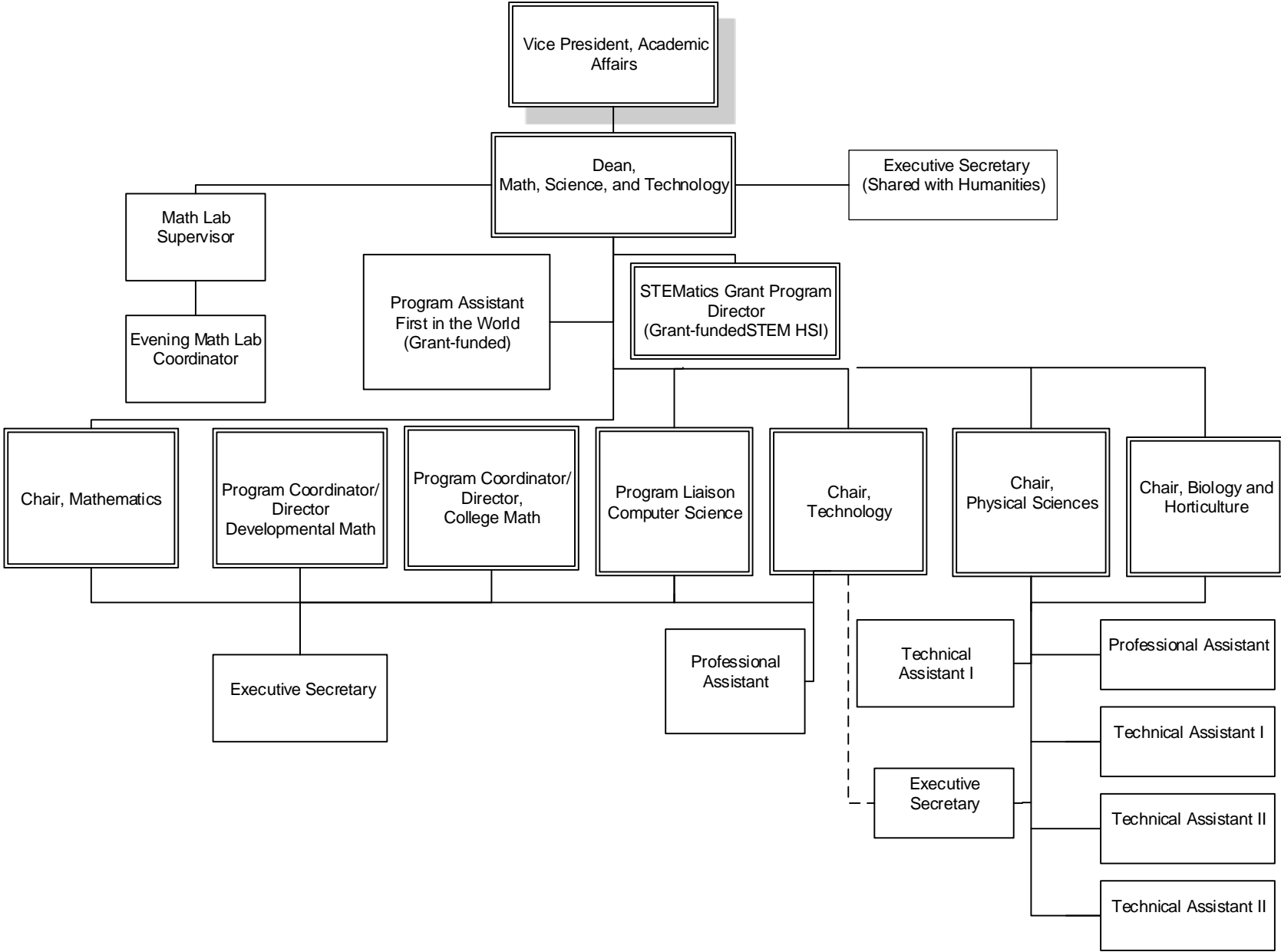
BERGEN COMMUNITY COLLEGE

HEALTH PROFESSIONS

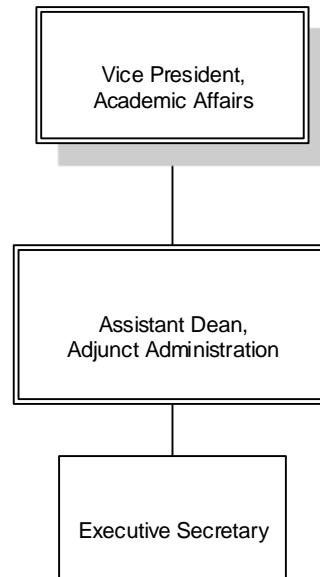


BERGEN COMMUNITY COLLEGE

MATH, SCIENCE, AND TECHNOLOGY

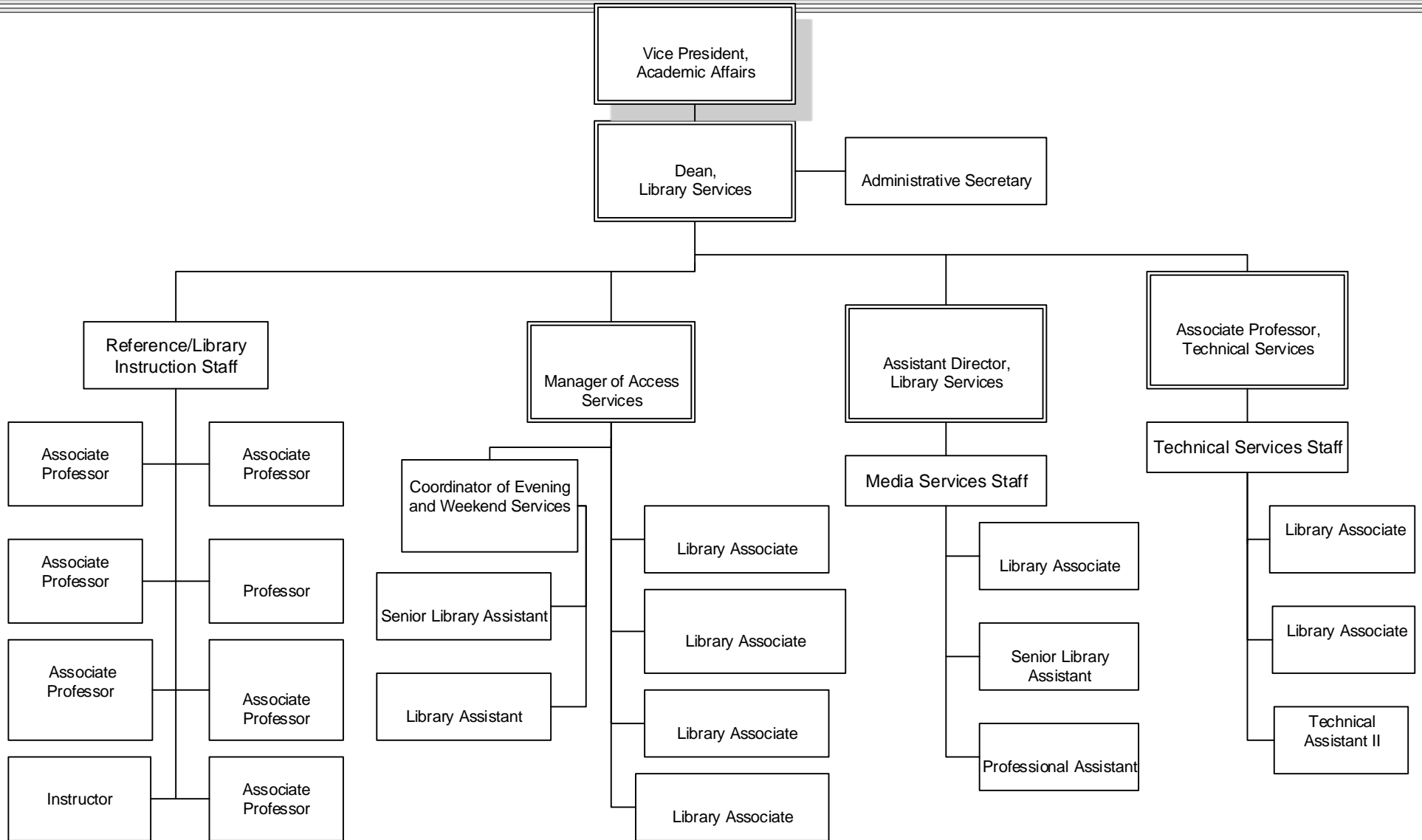


BERGEN COMMUNITY COLLEGE
ADJUNCT ADMINISTRATION



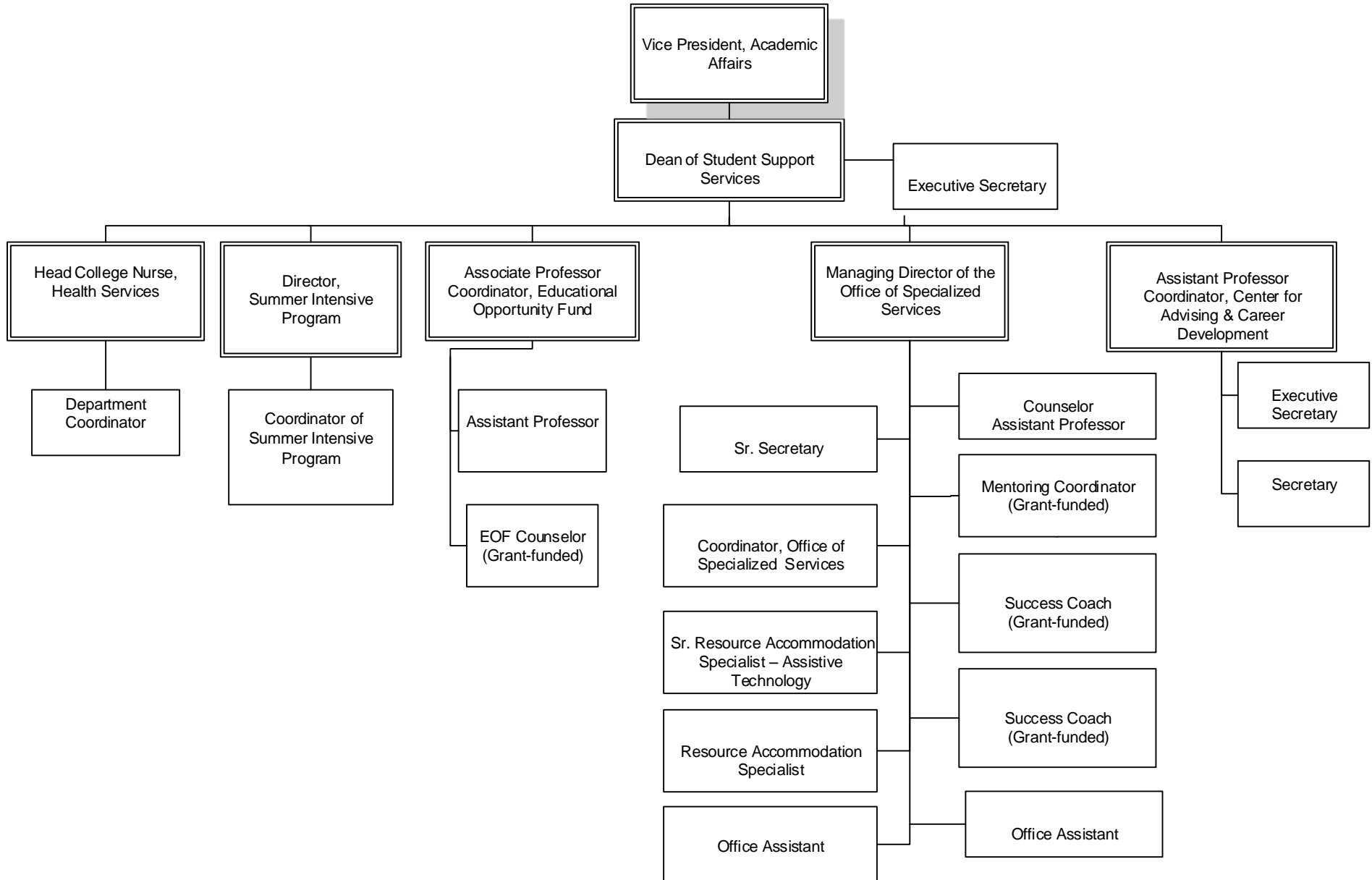
BERGEN COMMUNITY COLLEGE

SIDNEY SILVERMAN LIBRARY



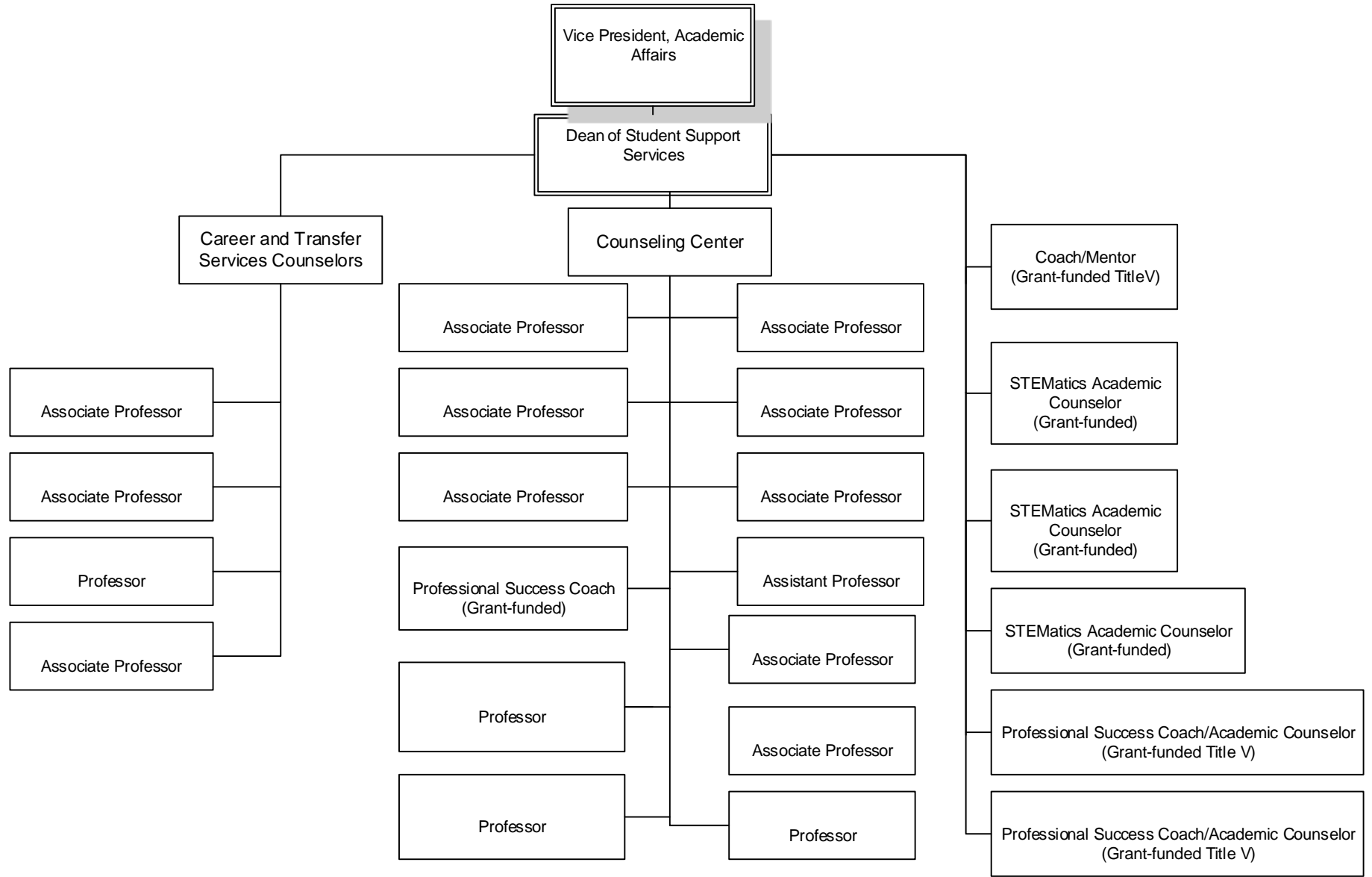
BERGEN COMMUNITY COLLEGE

STUDENT SUPPORT SERVICES

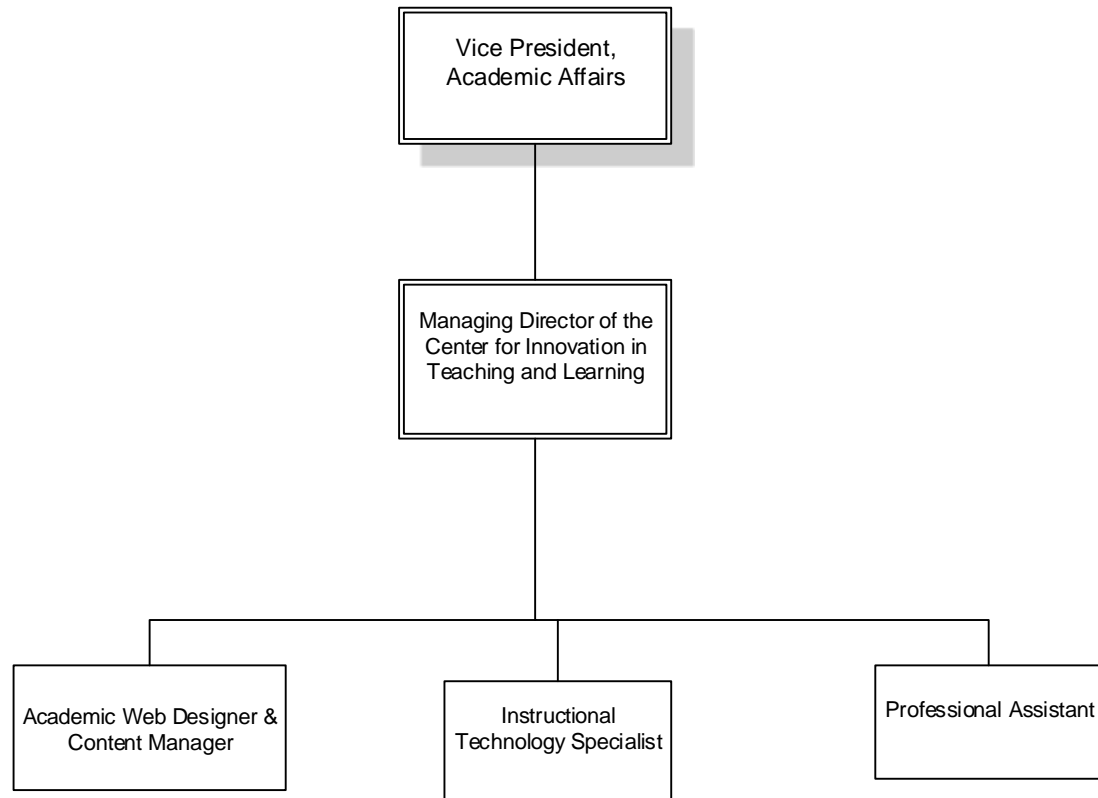


BERGEN COMMUNITY COLLEGE

CAREER AND TRANSFER SERVICES/COUNSELING CENTER

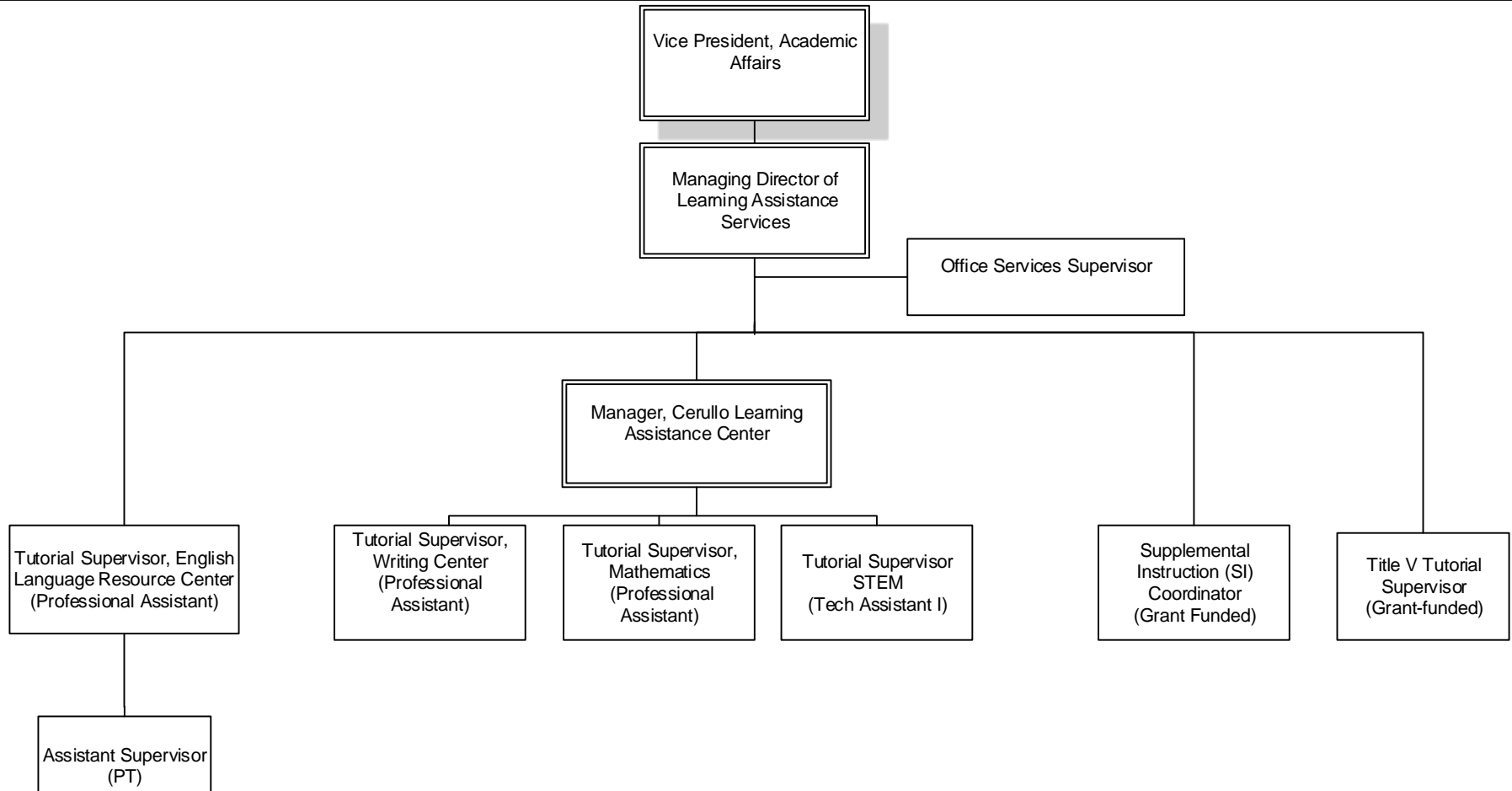


BERGEN COMMUNITY COLLEGE
CENTER FOR INNOVATION IN TEACHING AND LEARNING

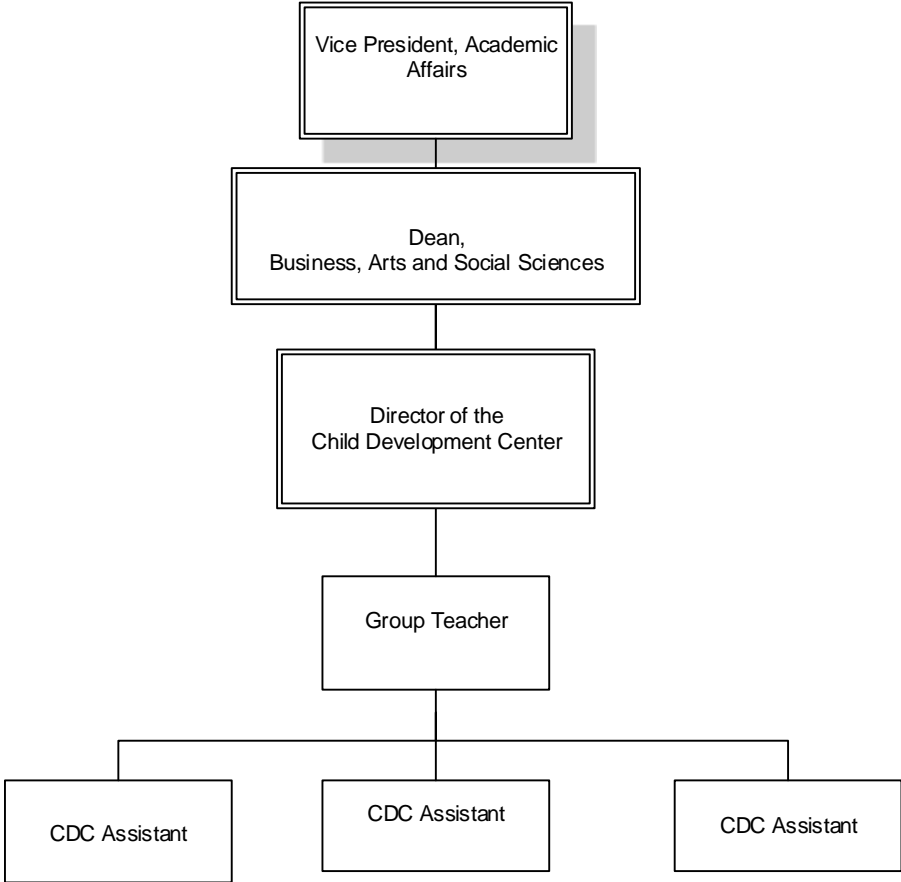


BERGEN COMMUNITY COLLEGE

CERULLO LEARNING ASSISTANCE CENTER

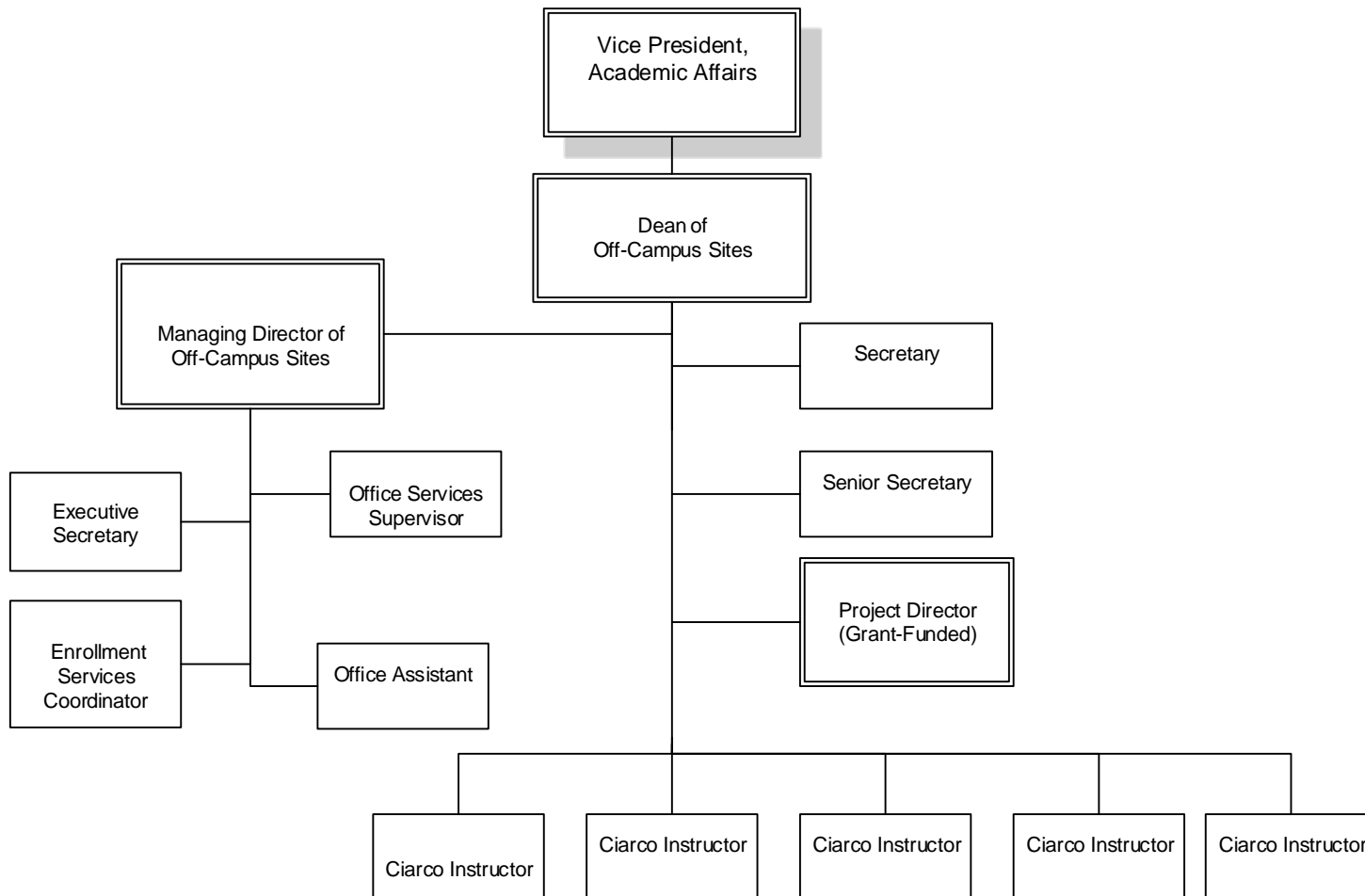


BERGEN COMMUNITY COLLEGE
CHILD DEVELOPMENT CENTER

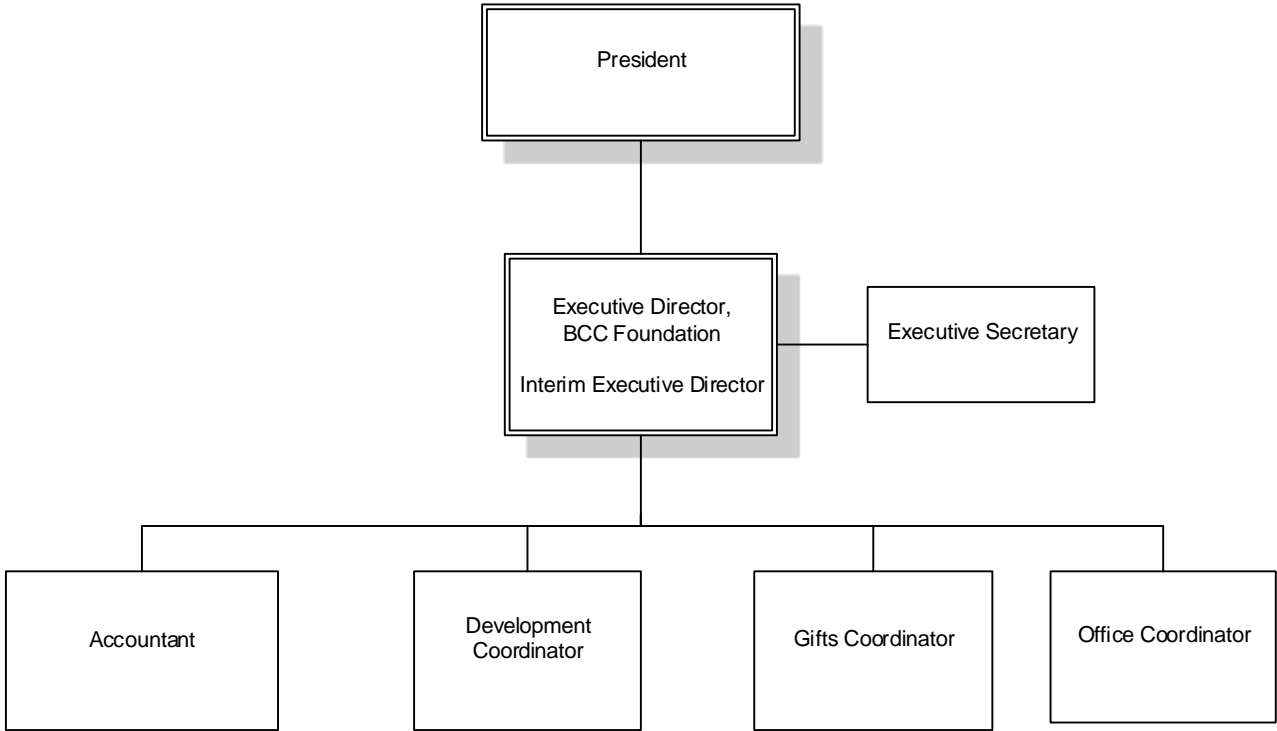


BERGEN COMMUNITY COLLEGE

OFF-CAMPUS SITES

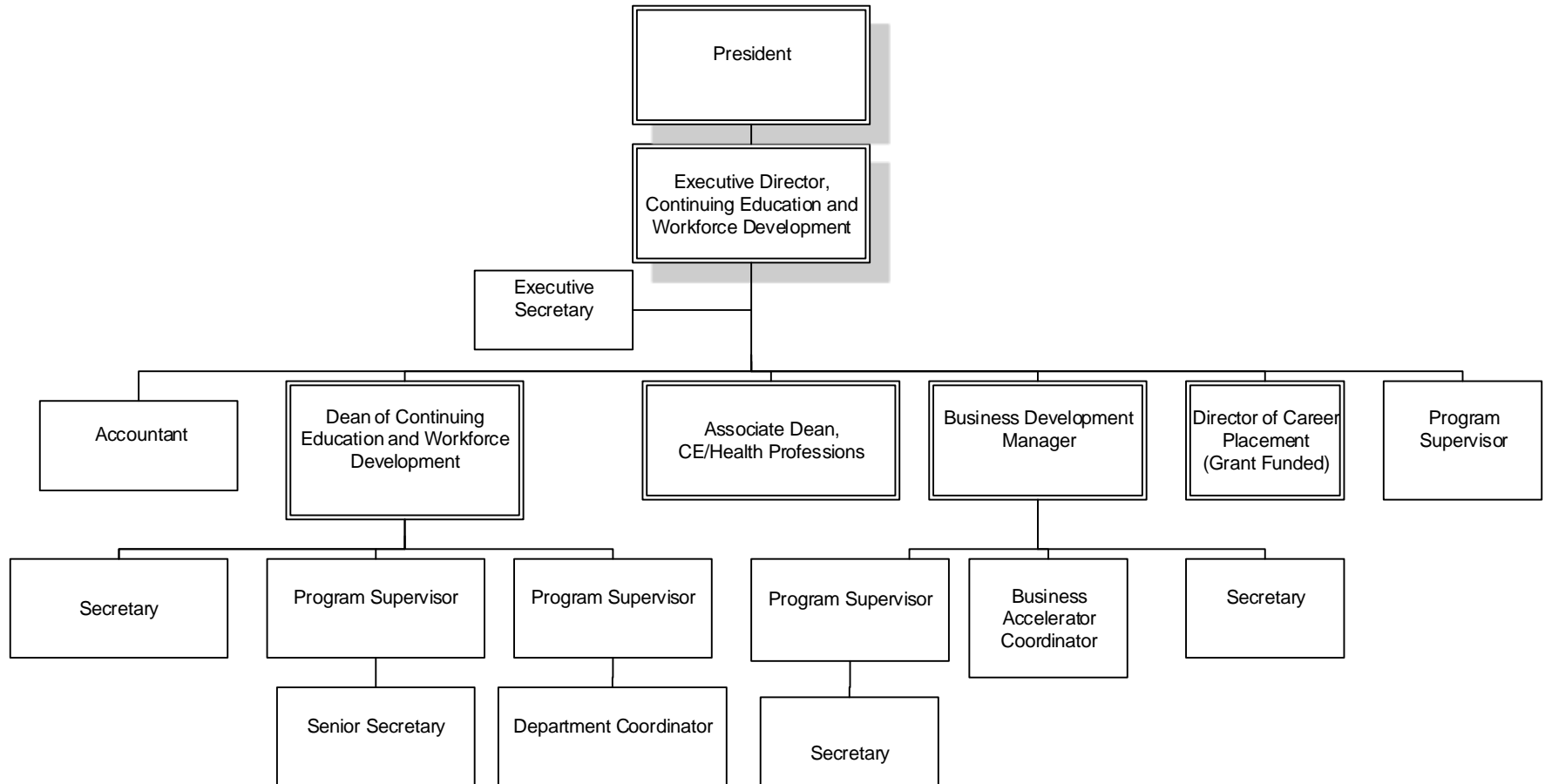


BERGEN COMMUNITY COLLEGE
BERGEN COMMUNITY COLLEGE FOUNDATION



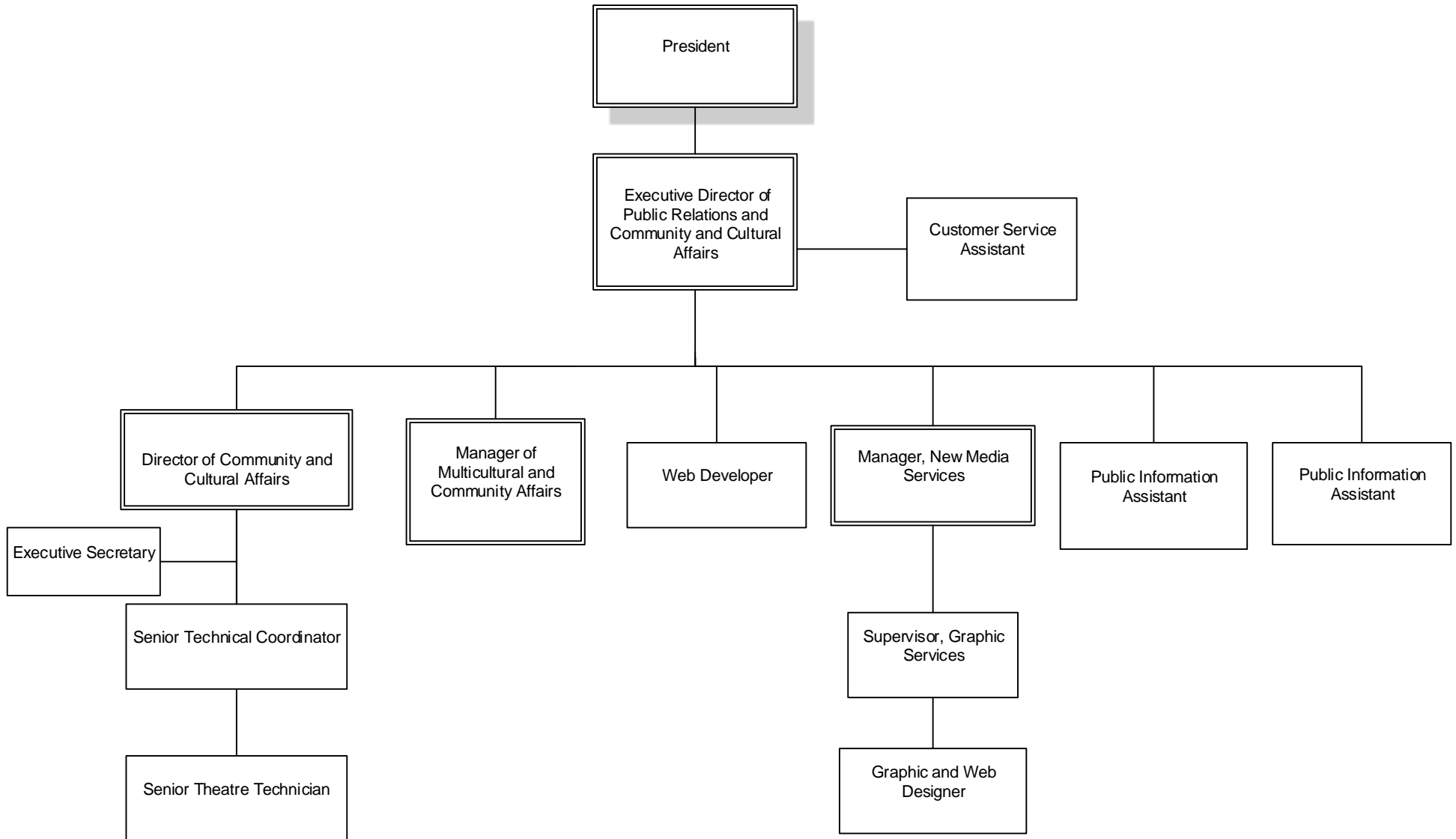
BERGEN COMMUNITY COLLEGE

CONTINUING EDUCATION AND WORKFORCE DEVELOPMENT



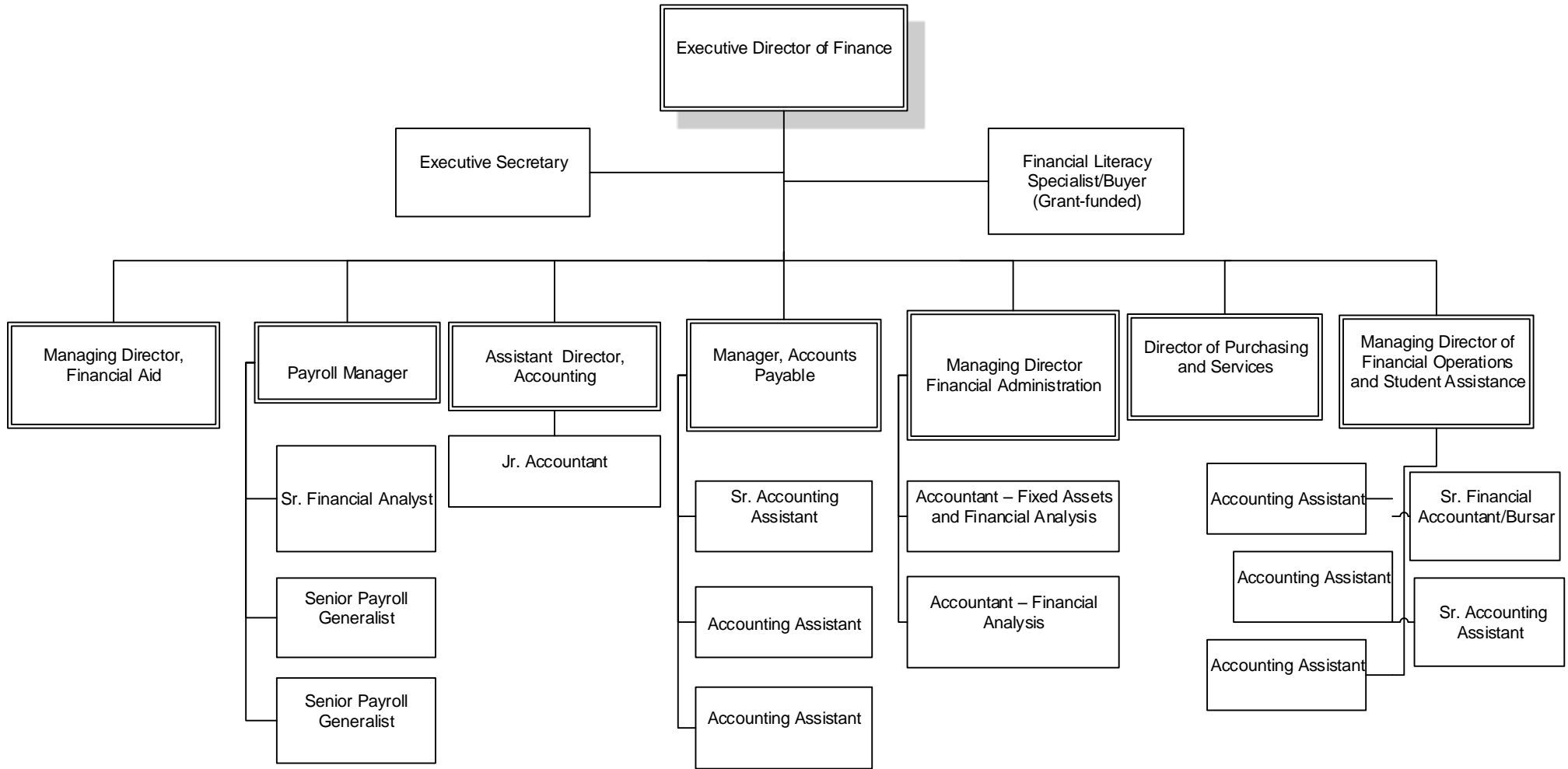
BERGEN COMMUNITY COLLEGE

PUBLIC RELATIONS AND COMMUNITY AND CULTURAL AFFAIRS



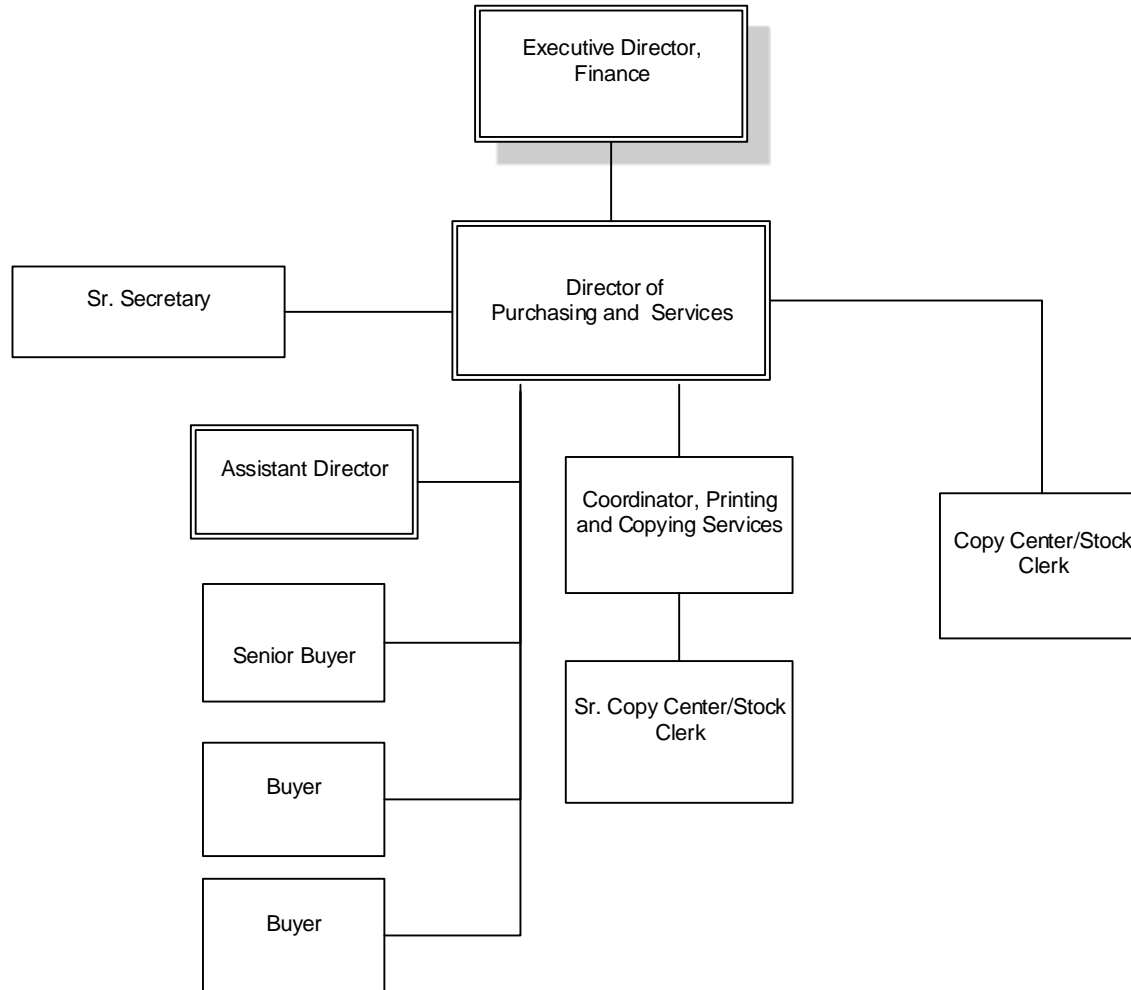
BERGEN COMMUNITY COLLEGE

FINANCE



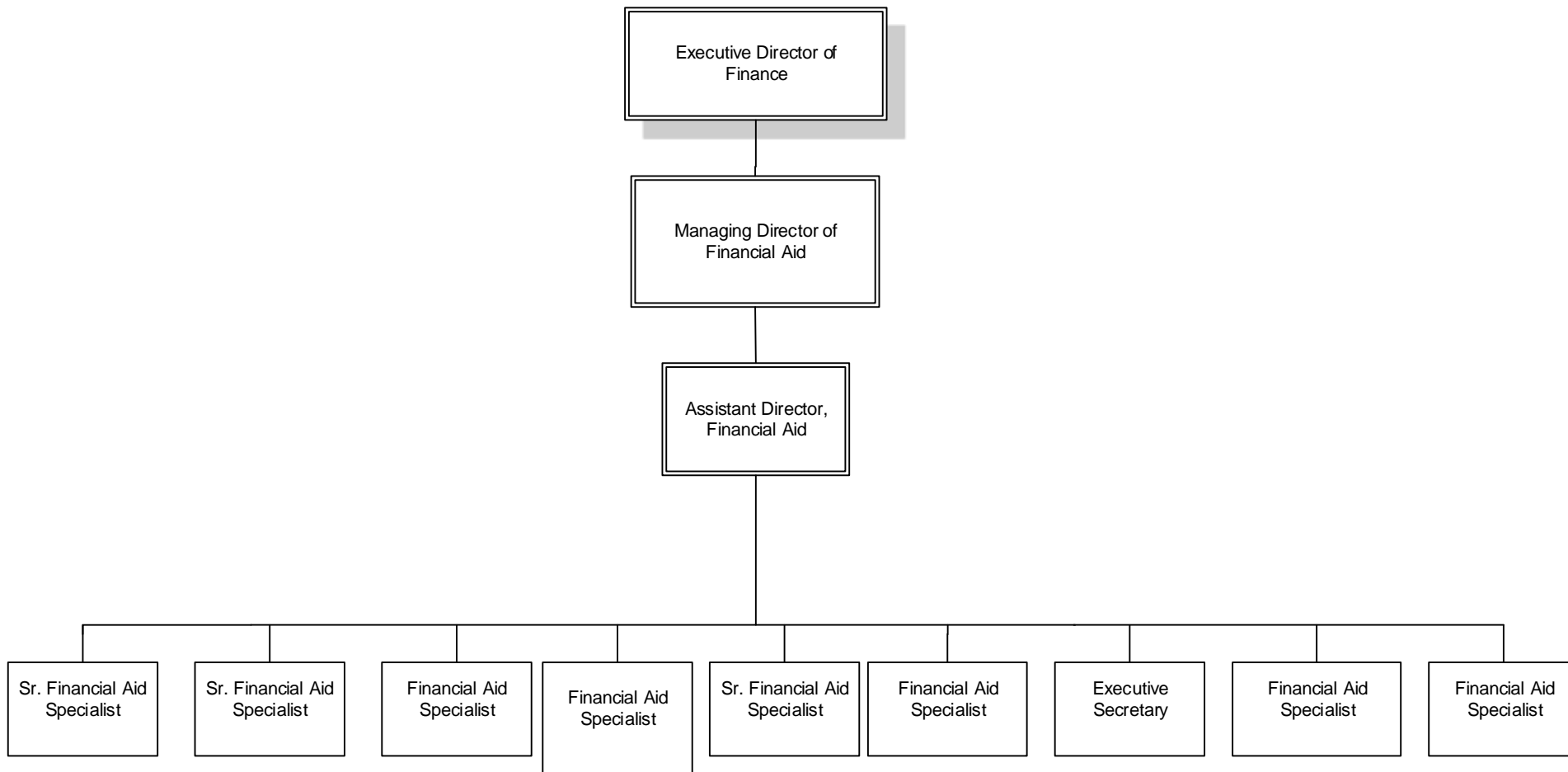
BERGEN COMMUNITY COLLEGE

PURCHASING AND SERVICES



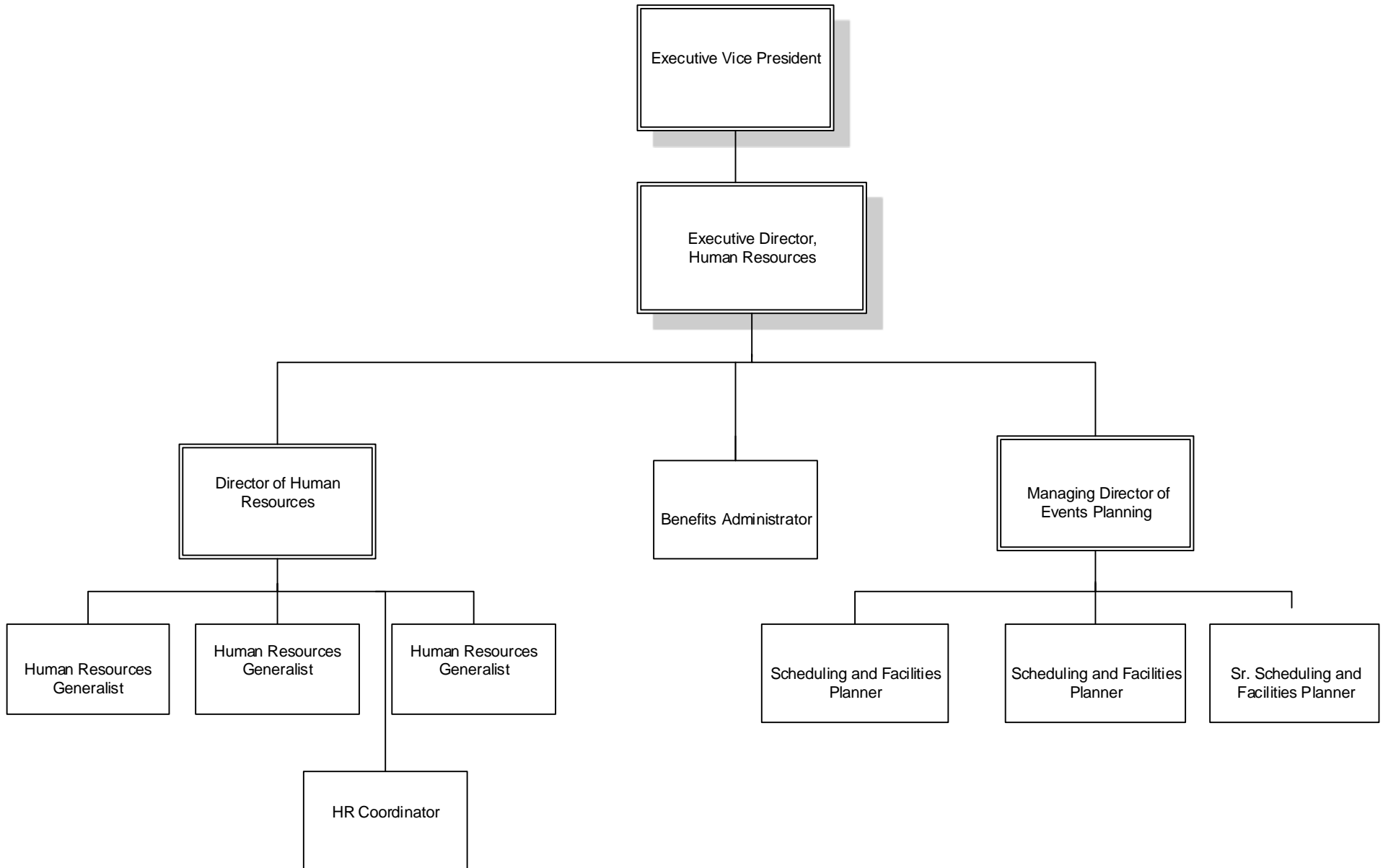
BERGEN COMMUNITY COLLEGE

FINANCIAL AID



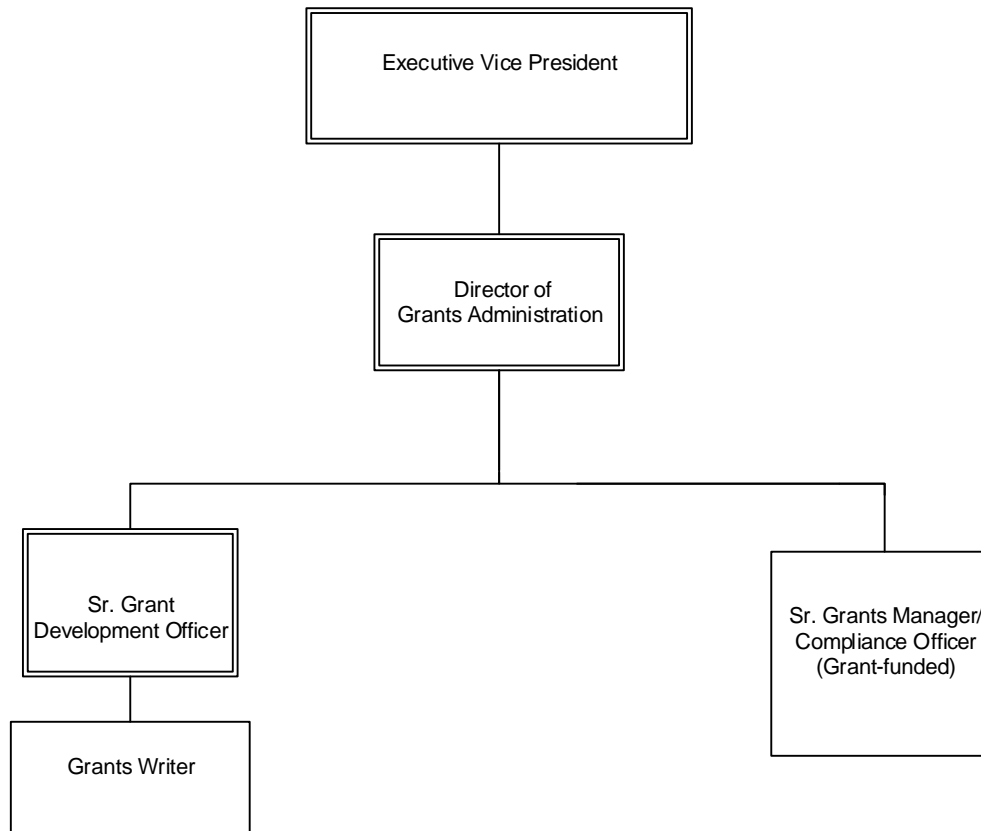
BERGEN COMMUNITY COLLEGE

HUMAN RESOURCES AND EVENT PLANNING



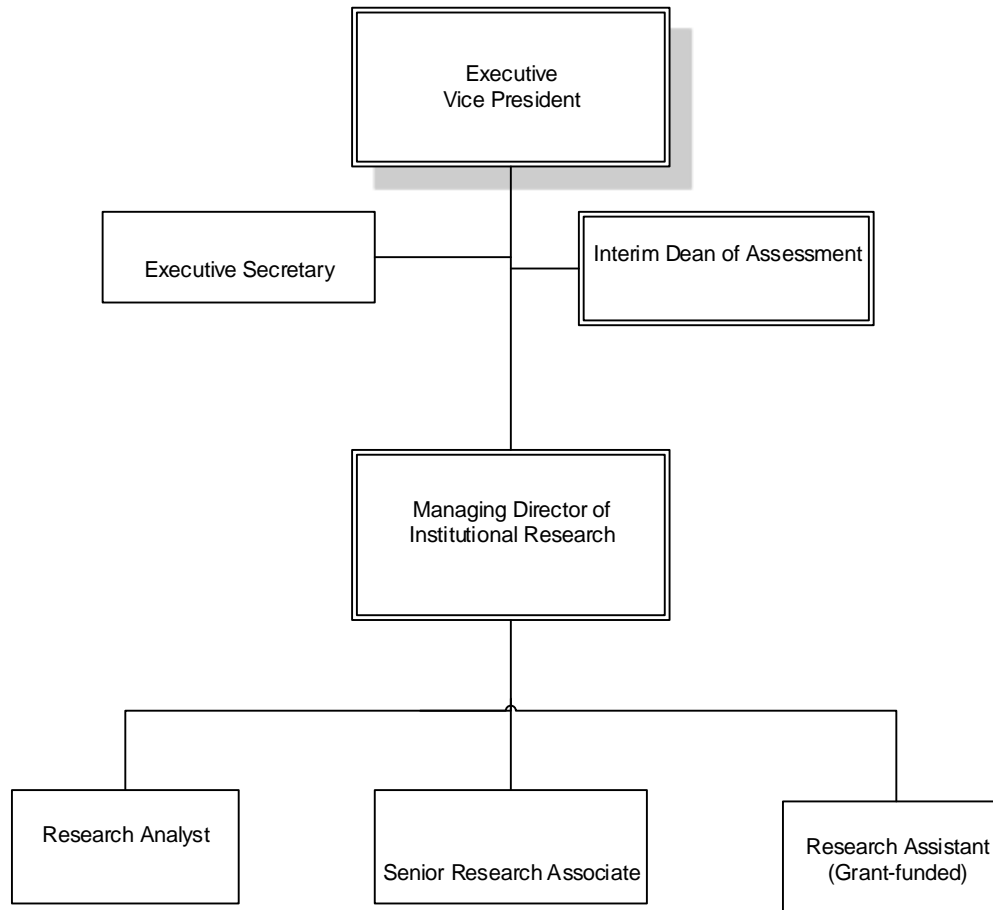
BERGEN COMMUNITY COLLEGE

GRANTS ADMINISTRATION



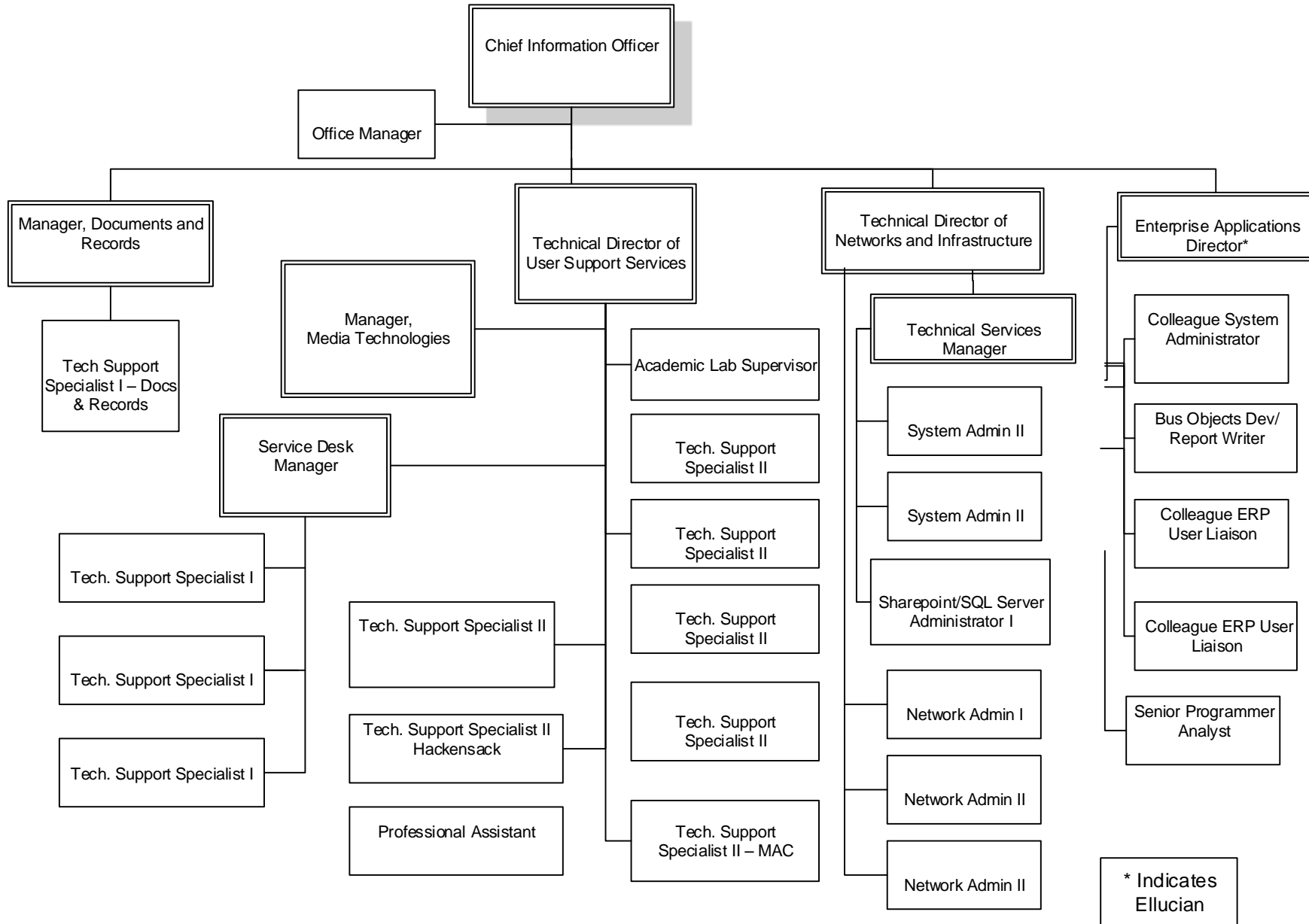
BERGEN COMMUNITY COLLEGE

INSTITUTIONAL EFFECTIVENESS



BERGEN COMMUNITY COLLEGE

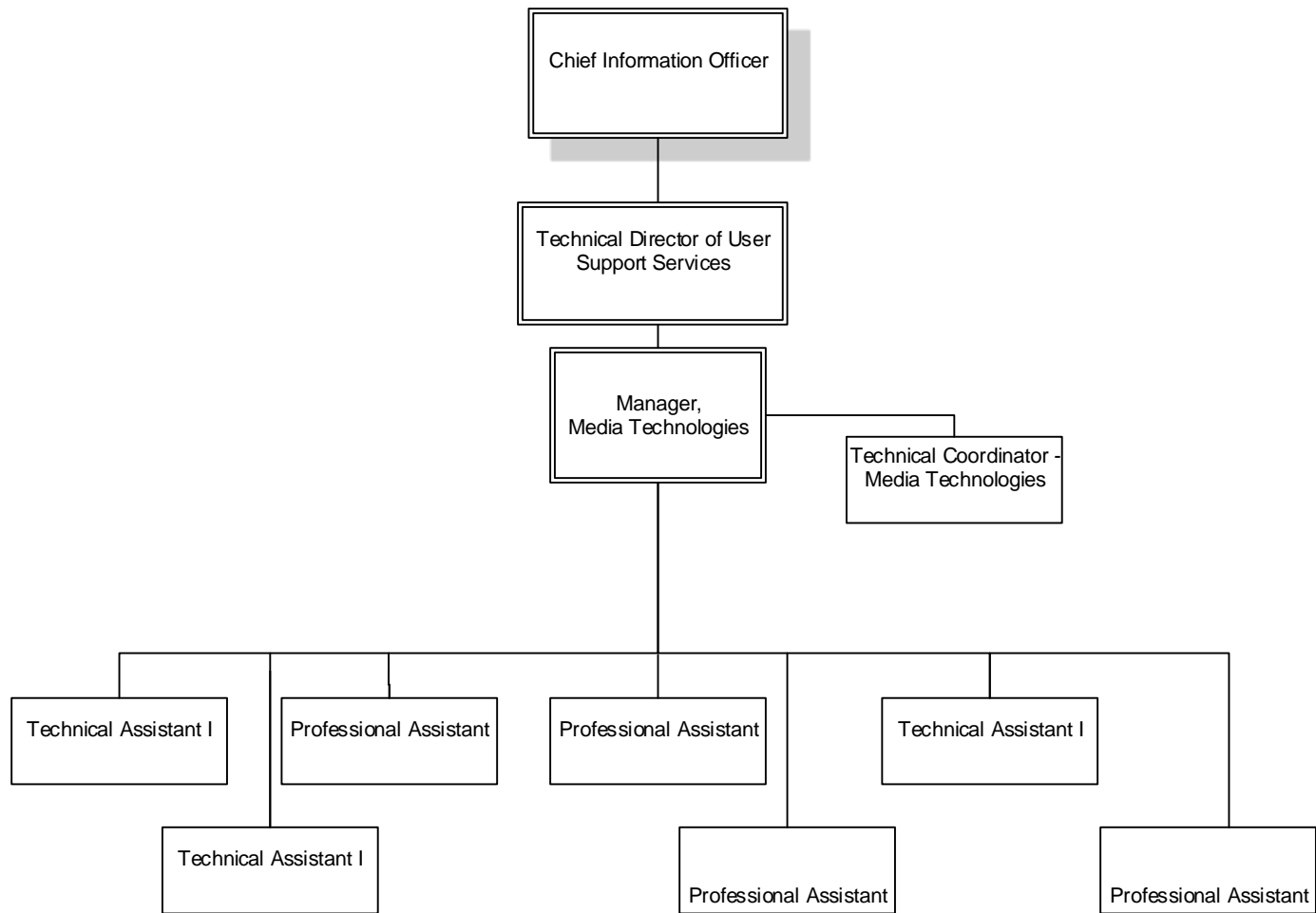
INFORMATION TECHNOLOGIES



* Indicates Ellucian

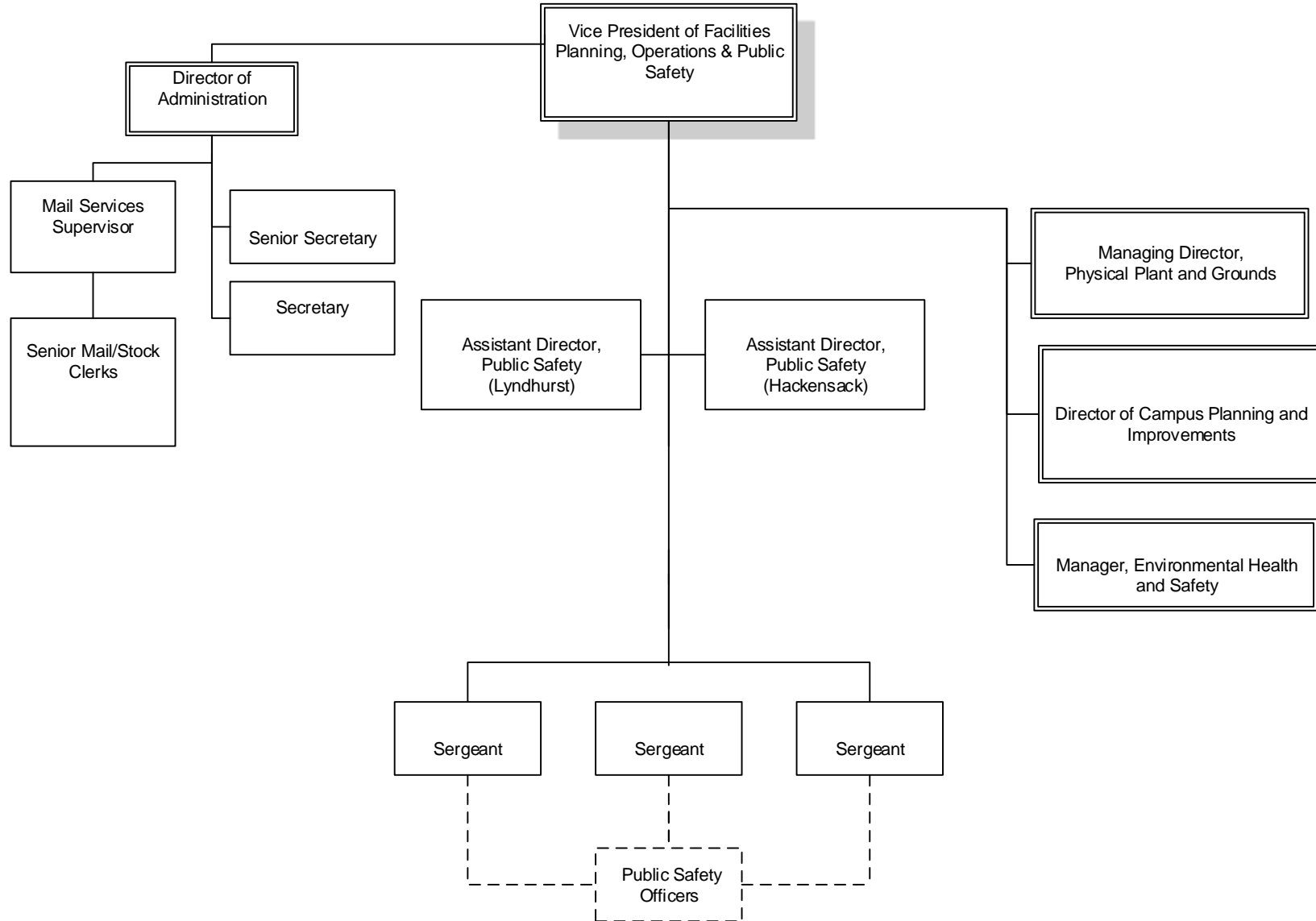
BERGEN COMMUNITY COLLEGE

MEDIA TECHNOLOGIES



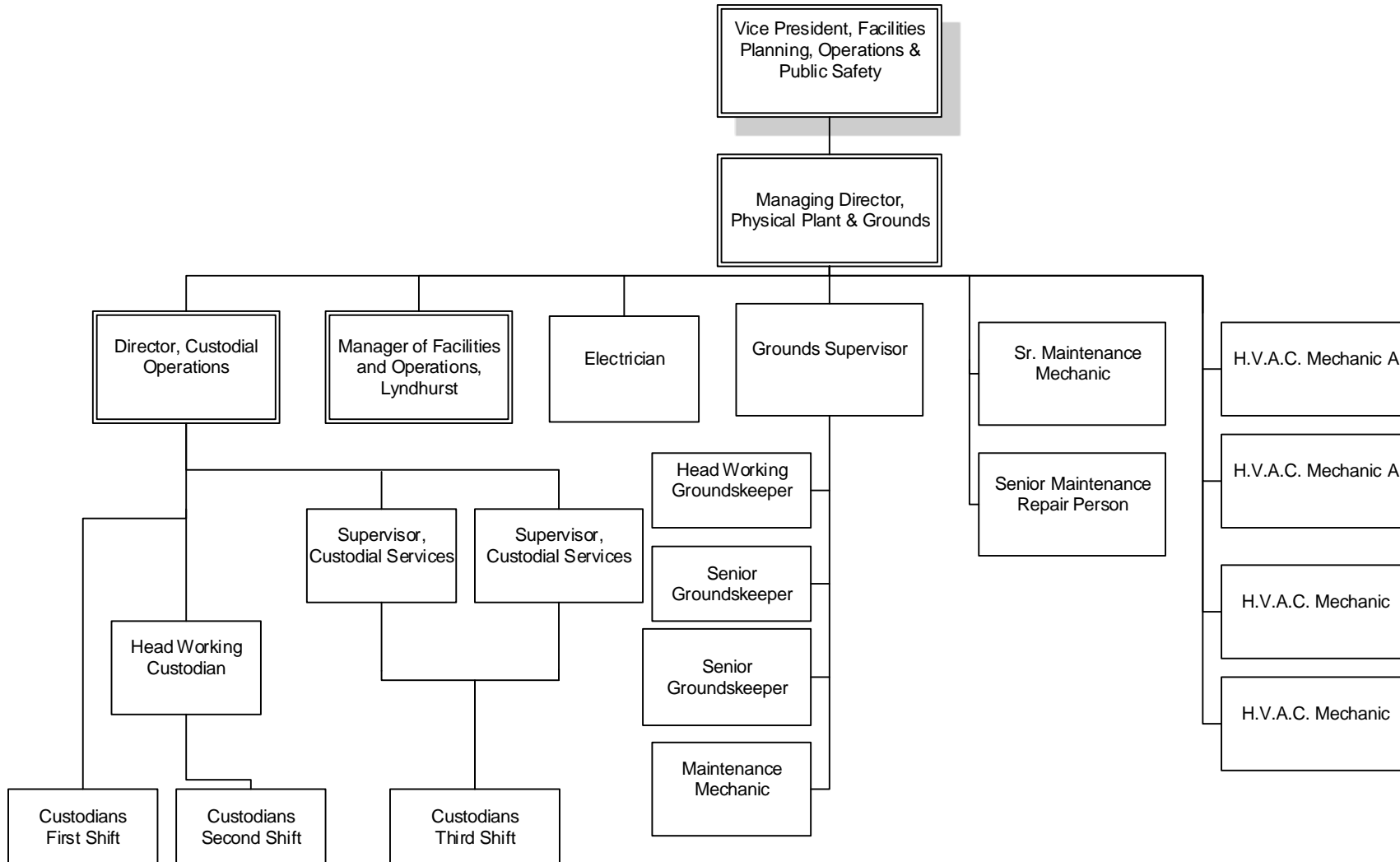
BERGEN COMMUNITY COLLEGE

FACILITIES PLANNING, OPERATIONS & PUBLIC SAFETY



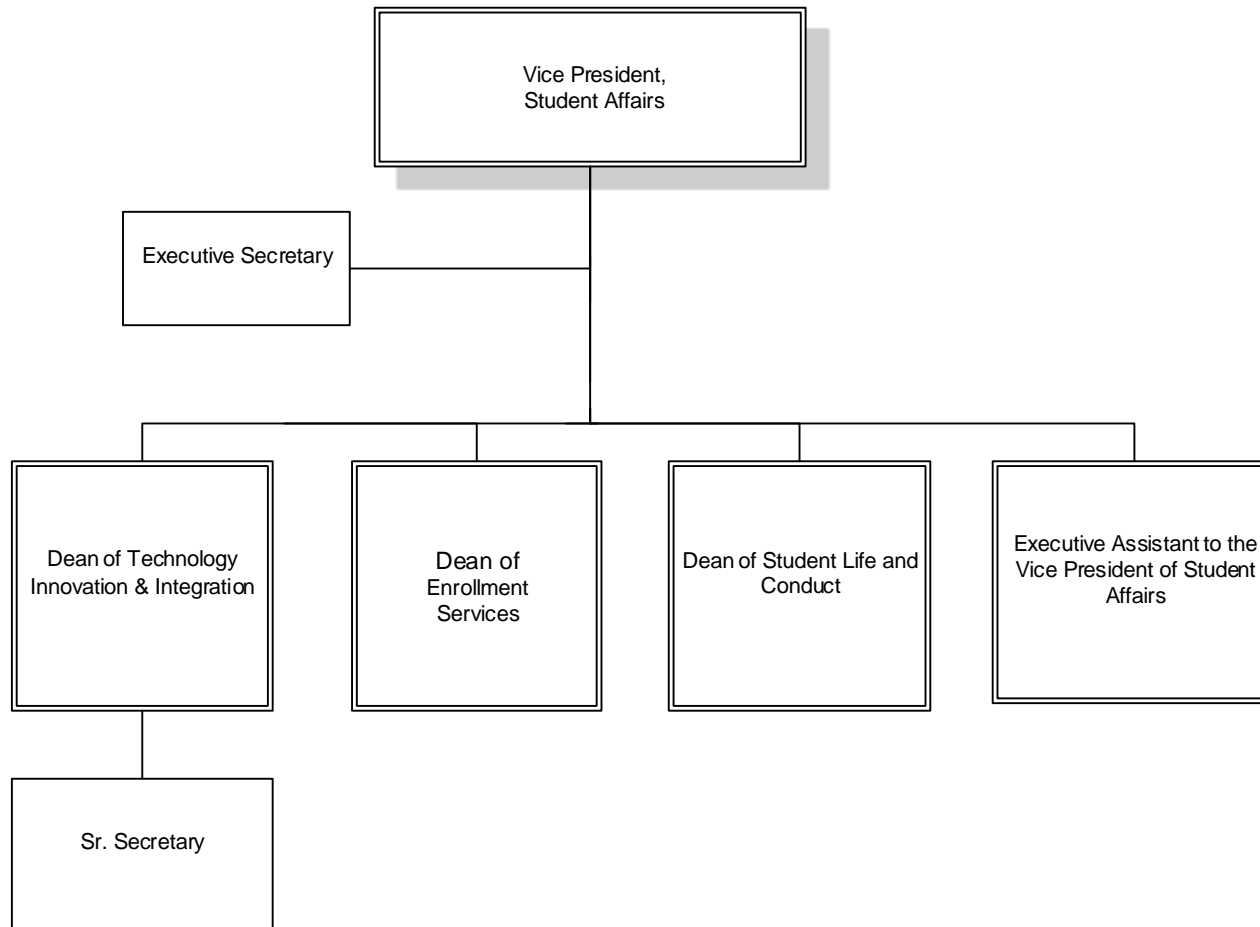
BERGEN COMMUNITY COLLEGE

PHYSICAL PLANT



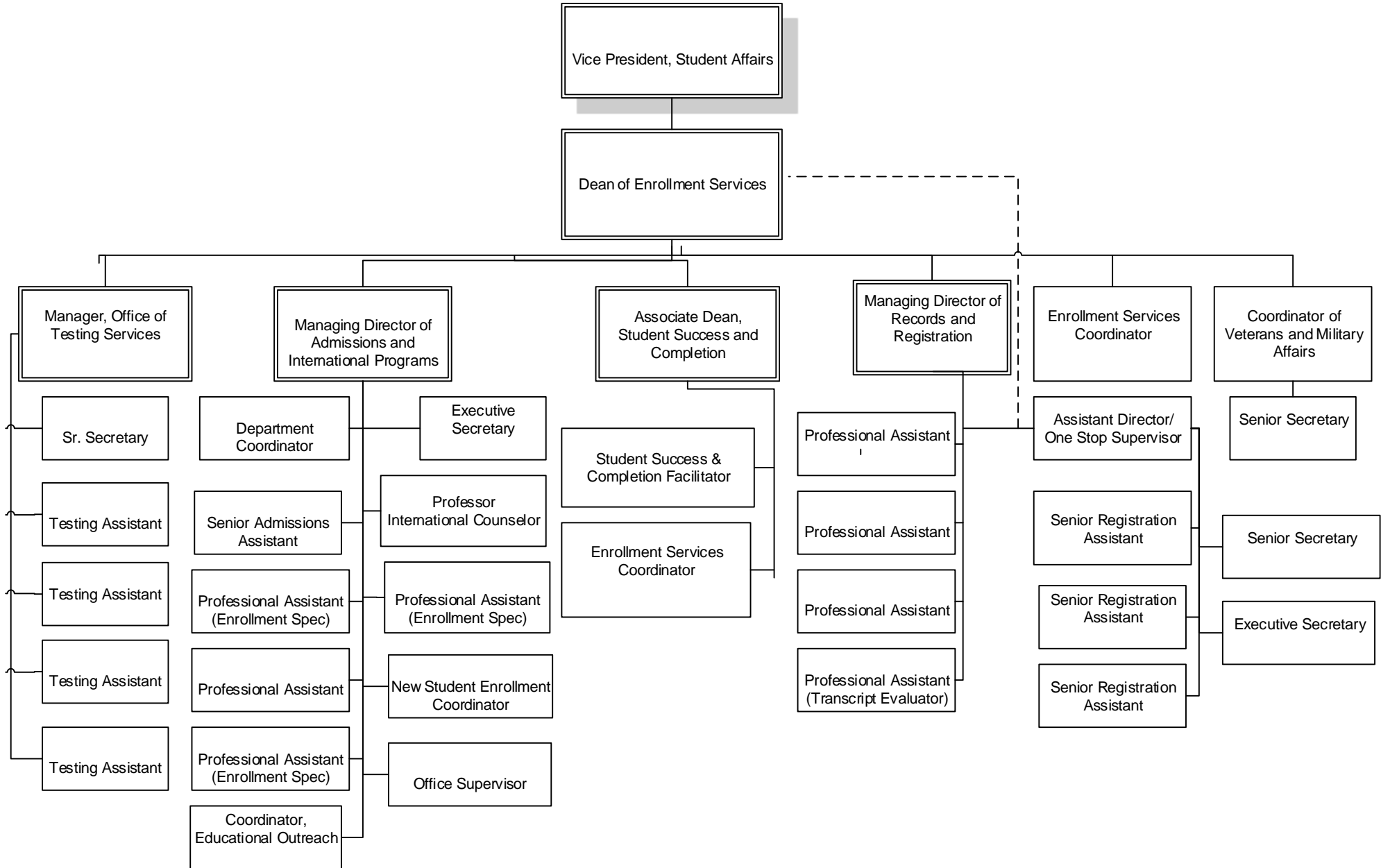
BERGEN COMMUNITY COLLEGE

STUDENT AFFAIRS



BERGEN COMMUNITY COLLEGE

ENROLLMENT SERVICES



BERGEN COMMUNITY COLLEGE

STUDENT LIFE AND CONDUCT

